

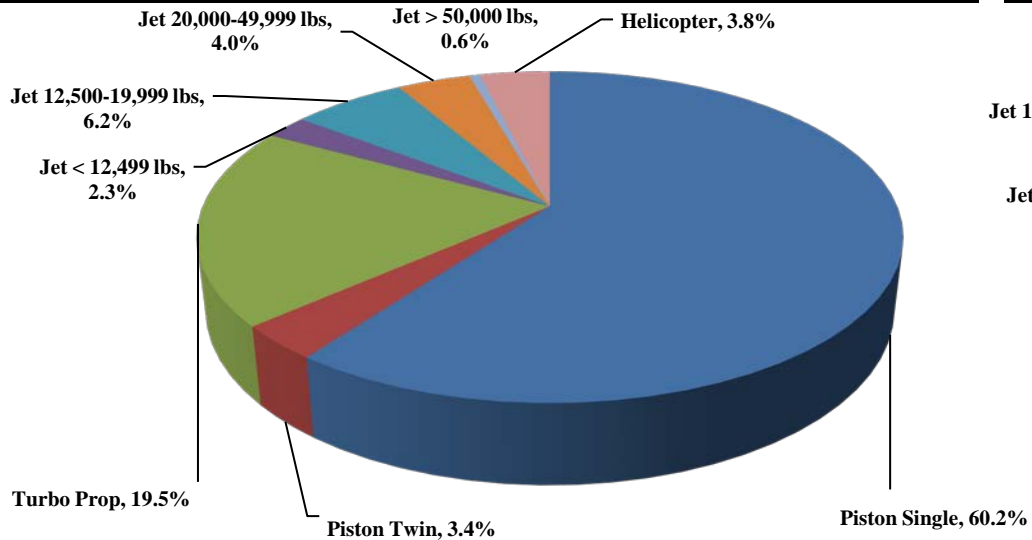


# TRUCKEE TAHOE AIRPORT DISTRICT Operations and Community Comment Report as of 12/31/21



### Current Quarter | Operations

October 1, 2021 - December 31, 2021

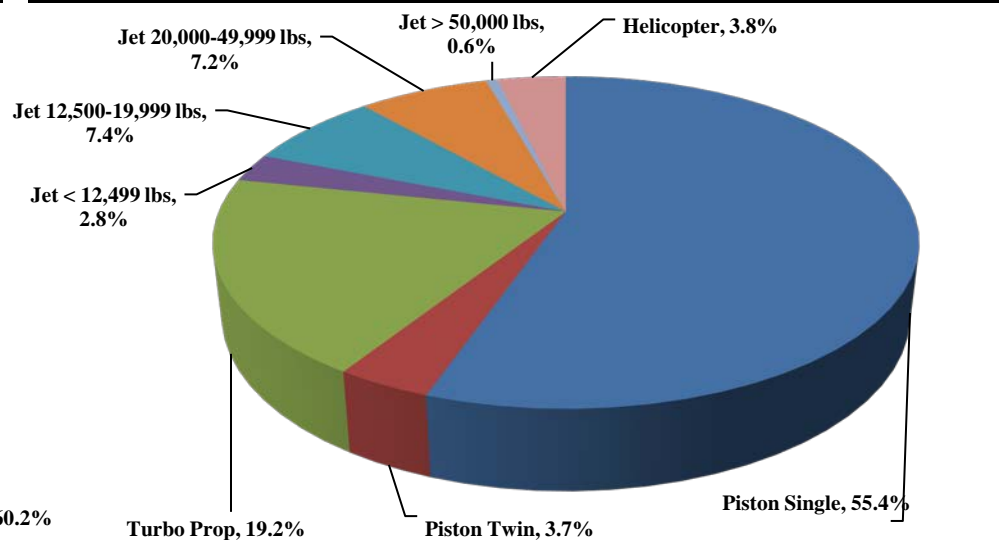


Total Powered Aircraft

5,242

### Year-to-Date | Operations

January 1, 2021 - December 31, 2021

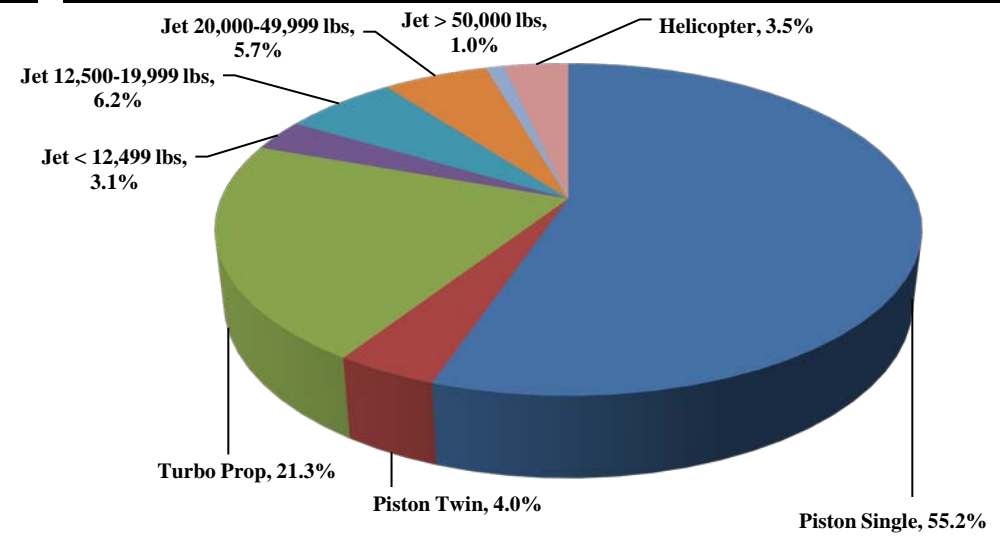


Total Powered Aircraft

28,800

### Historic | Operations

January 1, 2017 - December 31, 2021

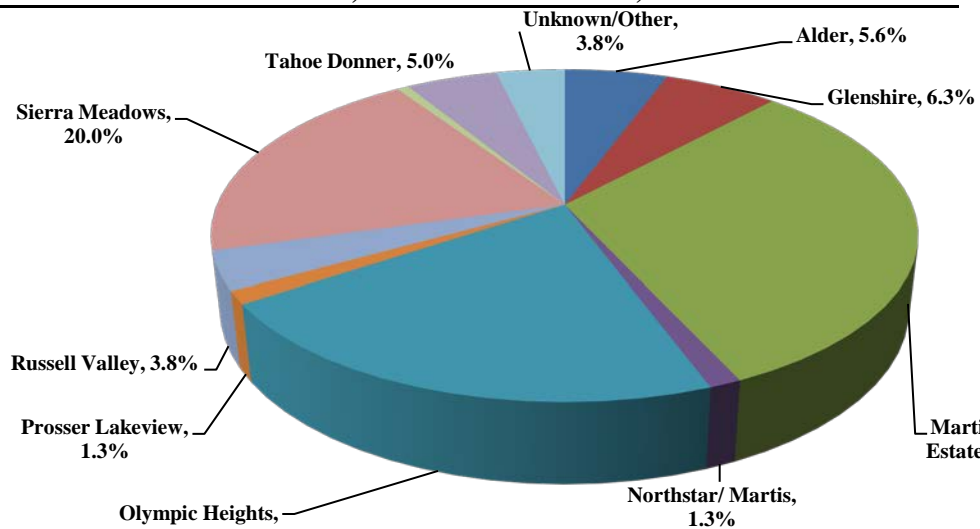


Total Powered Aircraft

146,019

### Current Quarter | Comments

October 1, 2021 - December 31, 2021



Total Comments

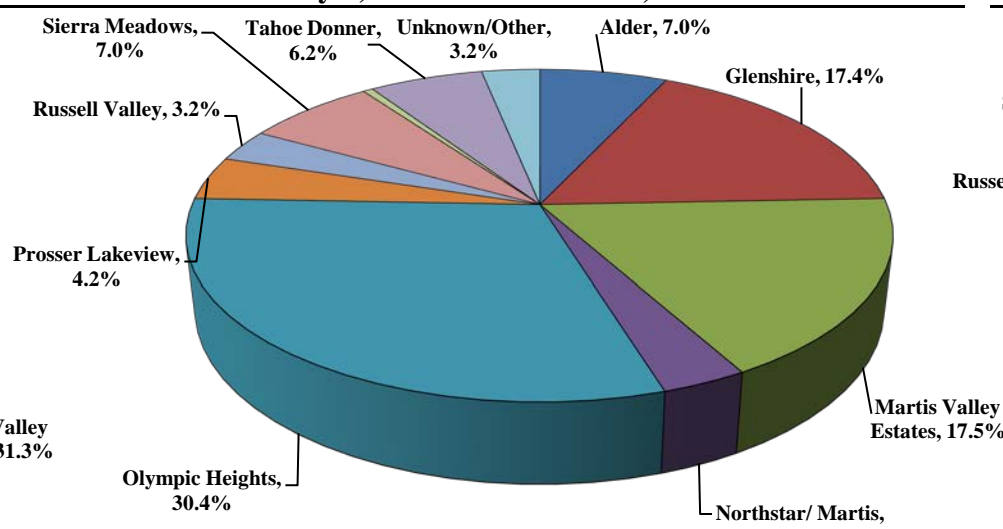
160

Operations / Comment

33

### Year-to-Date | Comments

January 1, 2021 - December 31, 2021



Total Comments

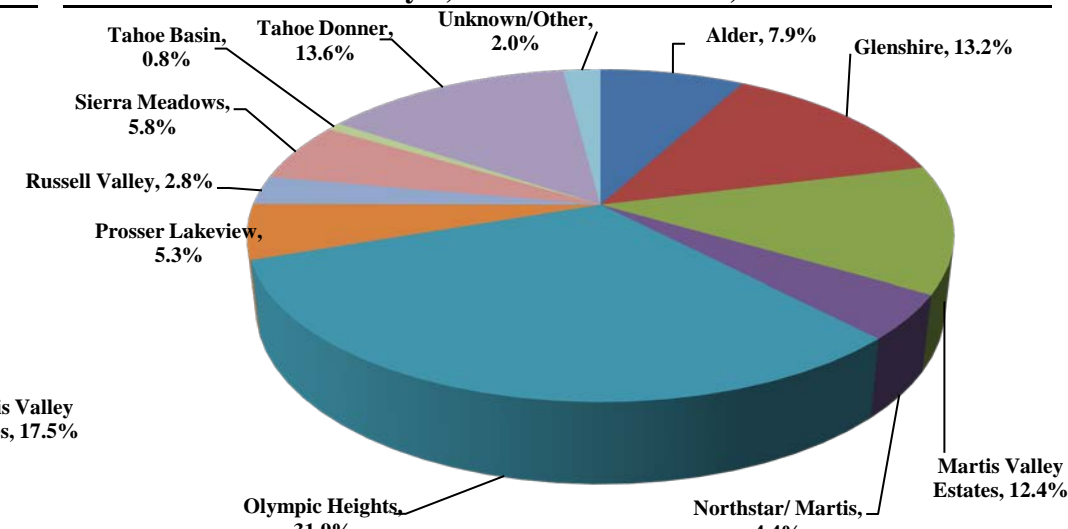
1,320

Operations / Comment

24

### Historic | Comments

January 1, 2017 - December 31, 2021



Total Comments

4,252

Operations / Comment

40

### Notes

Operations graphs above use Total Powered Aircraft. Glider operations are not included.

2018 - Launched Community Hotline & Plane Noise with Smart Receipt

2017 - Residential Zones changed to match minimum of 1% of total comments

2015 - Jet > 50,000 lbs category added in Q1

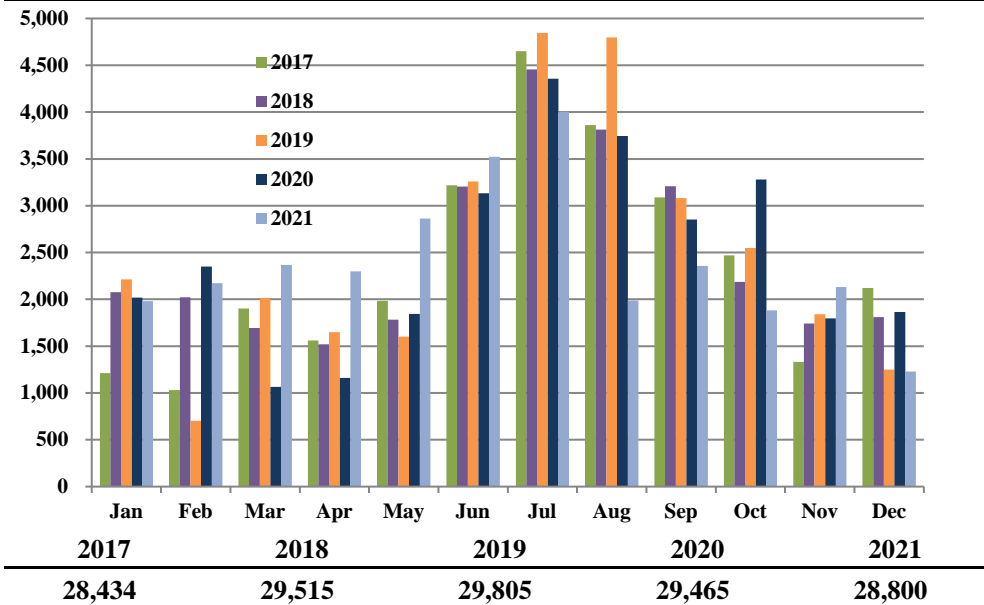
2014 - TTAD launched 'Report Noise' link in website



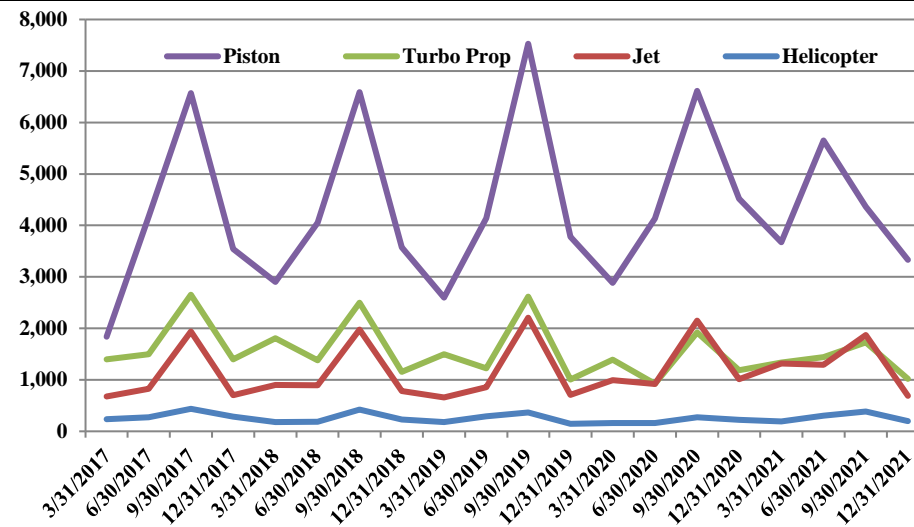
# TRUCKEE TAHOE AIRPORT DISTRICT Operations and Community Comment Report as of 12/31/21



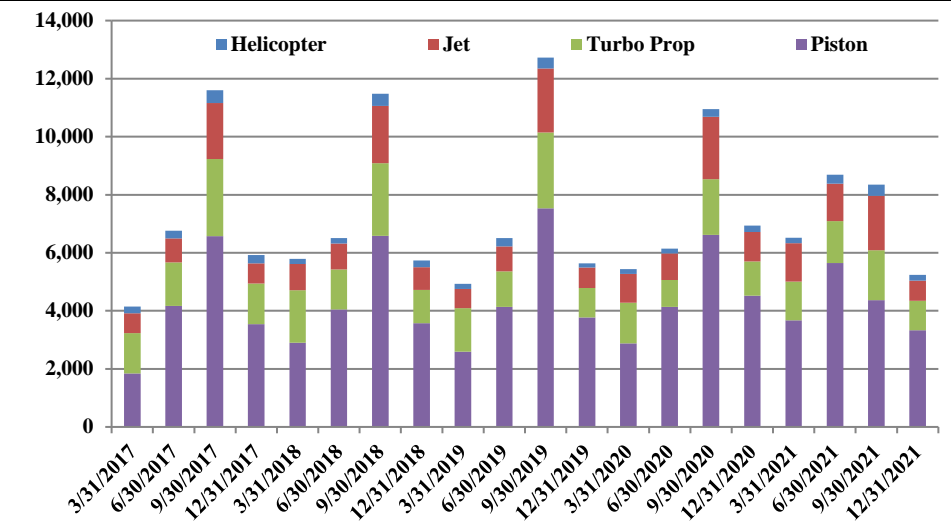
**Operations | by Month by Year**  
January 1, 2017 - December 31, 2021



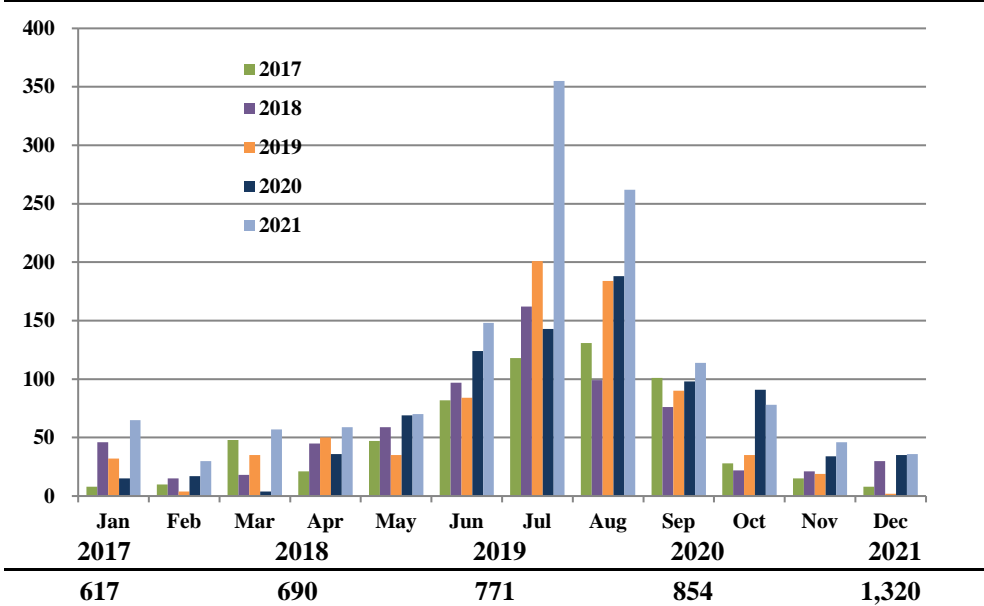
**Operations | by Type by Quarter**  
January 1, 2017 - December 31, 2021



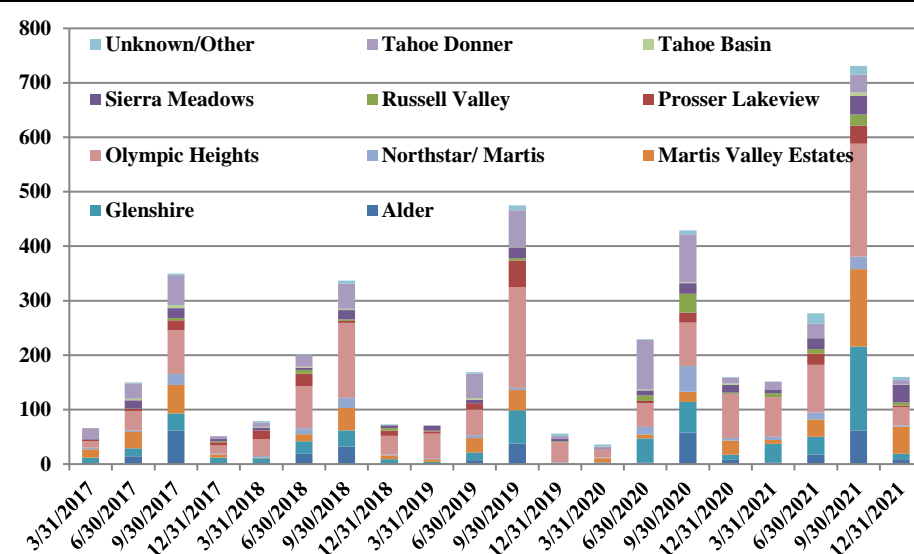
**Operations | Mix by Type by Quarter**  
January 1, 2017 - December 31, 2021



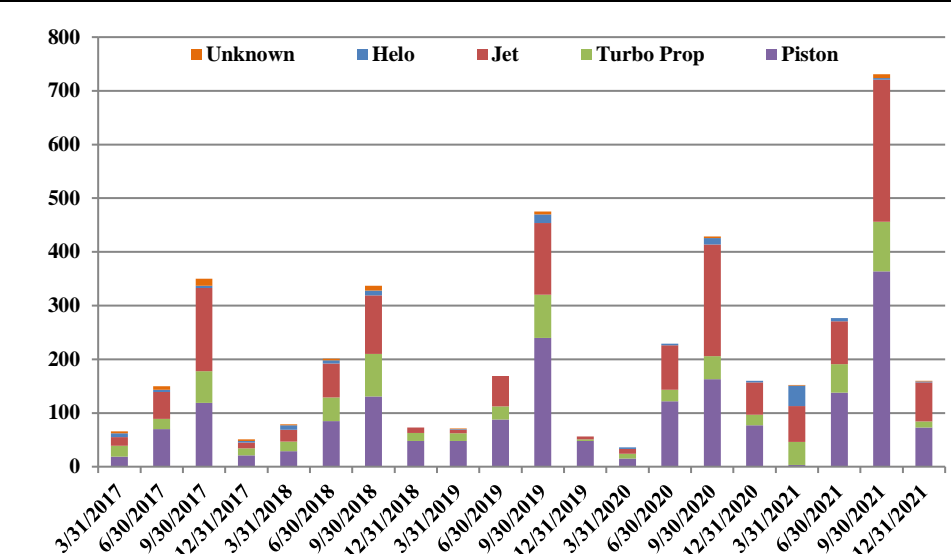
**Comments | by Month by Year**  
January 1, 2017 - December 31, 2021



**Comments | by Locale by Quarter**  
January 1, 2017 - December 31, 2021



**Comments | by Type by Quarter**  
January 1, 2017 - December 31, 2021



**Notes**

Operations graphs above use Total Powered Aircraft. Glider operations are not included.  
 2018 - Launched Community Hotline & Plane Noise with Smart Receipt  
 2017 - Residential Zones changed to match minimum of 1% of total comments  
 2015 - Jet > 50,000 lbs category added in Q1  
 2014 - TTAD launched 'Report Noise' link in website



## Truckee Tahoe Airport District Operations and Community Comment Report as of 12/31/21

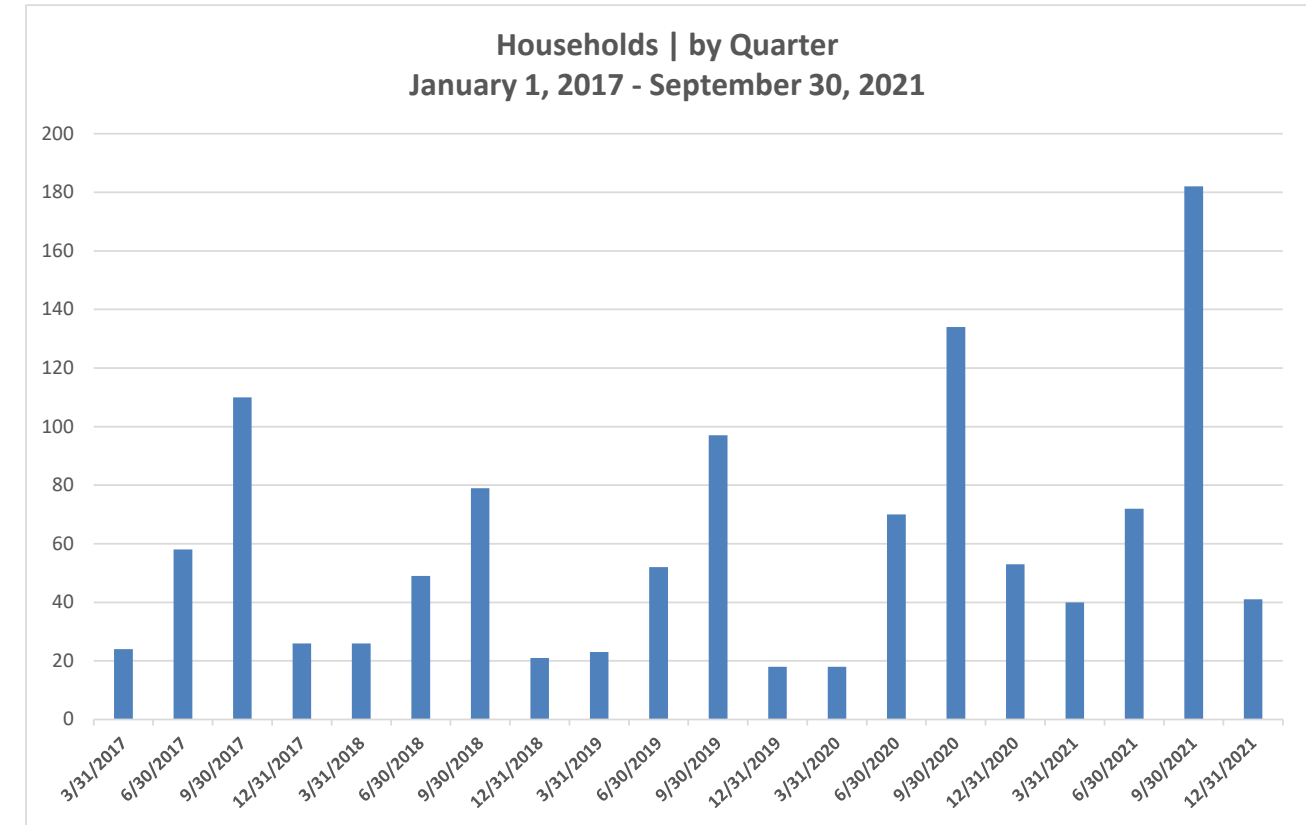
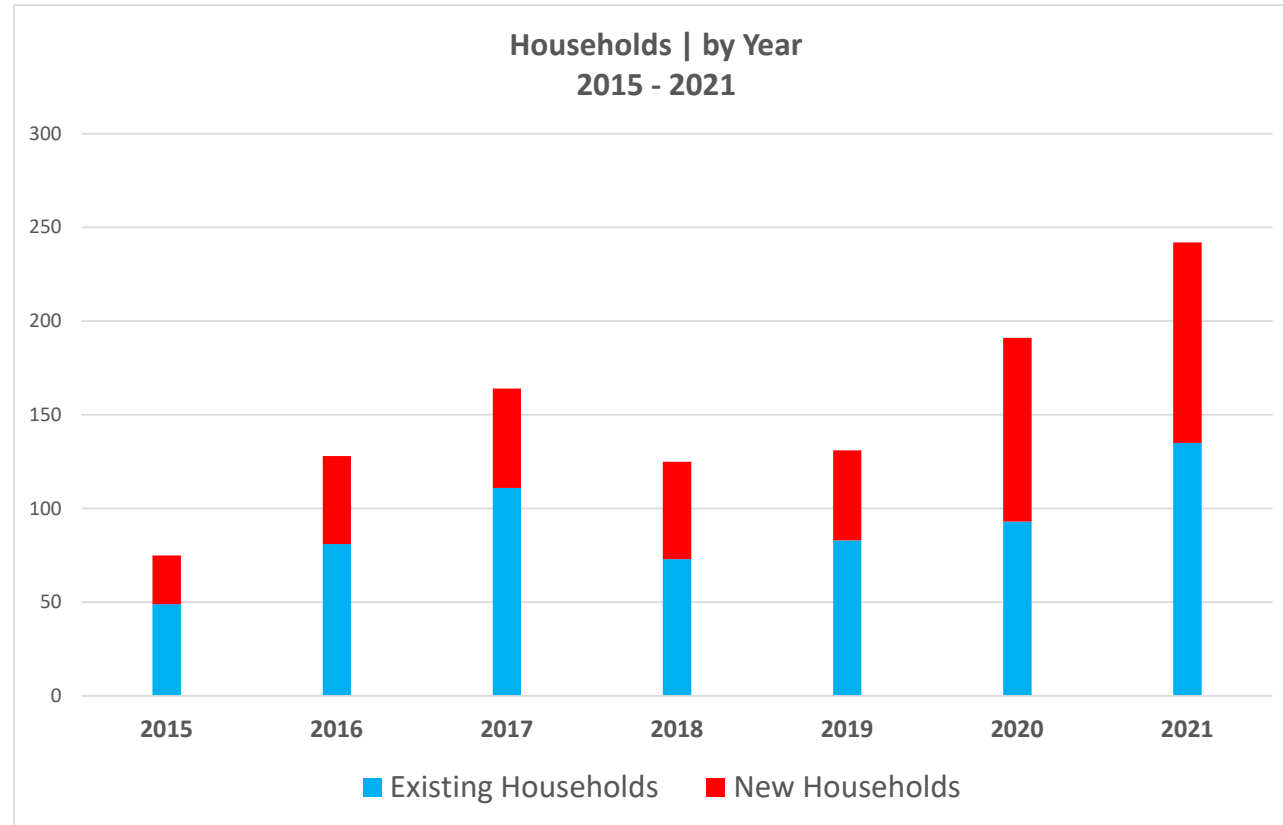


	OPERATIONS								Year over Year				Notes		
	2020				2021										
	Oct	Nov	Dec	Q4	Oct	Nov	Dec	Q4	difference	%	1/1/20 - 12/31/20	1/1/21 - 12/21/21		difference	%
<b>Operations Detail</b>															
Piston Single	2,103	1,126	992	4,221	1,046	1,392	716	3,154	(1,067)	(25.28%)	17,002	15,950	(1,052)	(6.19%)	
Piston Twin	114	80	105	299	74	72	31	177	(122)	(40.80%)	1,152	1,069	(83)	(7.20%)	
Turbo Prop	483	296	405	1,184	415	362	243	1,020	(164)	(13.85%)	5,418	5,526	108	1.99%	
Jet < 12,499 lbs	76	28	36	140	55	44	23	122	(18)	(12.86%)	829	794	(35)	(4.22%)	
Jet 12,500-19,999 lbs	184	107	131	422	101	121	105	327	(95)	(22.51%)	1,883	2,140	257	13.65%	
Jet 20,000-49,999 lbs	163	74	134	371	98	62	50	210	(161)	(43.40%)	1,939	2,062	123	6.34%	
Jet > 50,000 lbs	48	16	16	80	12	10	10	32	(48)	(60.00%)	424	179	(245)	(57.78%)	
Helicopter	109	70	46	225	82	68	50	200	(25)	(11.11%)	818	1,080	262	32.03%	
Total Powered Aircraft	3,280	1,797	1,865	6,942	1,883	2,131	1,228	5,242	(1,700)	(24.49%)	29,465	28,800	(665)	(2.26%)	
Gliders	-	-	-	-	-	-	-	-	-	0.00%	3,976	2,523	(1,453)	(36.54%)	
<b>Total Operations</b>	<b>3,280</b>	<b>1,797</b>	<b>1,865</b>	<b>6,942</b>	<b>1,883</b>	<b>2,131</b>	<b>1,228</b>	<b>5,242</b>	<b>(1,700)</b>	<b>(24.49%)</b>	<b>33,441</b>	<b>31,323</b>	<b>(2,118)</b>	<b>(6.33%)</b>	

	COMMENTS								Year over Year				Notes		
	2020				2021										
	Oct	Nov	Dec	Q4	Oct	Nov	Dec	Q4	difference	%	1/1/20 - 12/31/20	1/1/21 - 12/21/21		difference	%
<b>Comment Location</b>															
Alder	4	1	3	8	6	1	2	9	1	12.50%	69	92	23	33.33%	
Glenshire	8	1	-	9	6	3	1	10	1	11.11%	112	230	118	105.36%	
Martis Valley Estates	9	13	4	26	27	16	7	50	24	92.31%	60	231	171	285.00%	
Northstar/ Martis	3	1	1	5	-	2	-	2	(3)	(60.00%)	67	44	(23)	(34.33%)	
Olympic Heights	45	14	21	80	26	5	3	34	(46)	(57.50%)	219	401	182	83.11%	
Prosser Lakeview	1	-	-	1	1	-	1	2	1	100.00%	23	56	33	143.48%	
Russell Valley	2	-	-	2	1	5	-	6	4	200.00%	47	42	(5)	(10.64%)	
Sierra Meadows	11	1	2	14	3	9	20	32	18	128.57%	44	93	49	111.36%	
Tahoe Basin	3	-	-	3	-	1	-	1	(2)	(66.67%)	7	7	-	0.00%	
Tahoe Donner	4	3	4	11	8	-	-	8	(3)	(27.27%)	193	82	(111)	(57.51%)	
Unknown/Other	1	-	-	1	-	4	2	6	5	500.00%	13	42	29	223.08%	
<b>Total Comments</b>	<b>91</b>	<b>34</b>	<b>35</b>	<b>160</b>	<b>78</b>	<b>46</b>	<b>36</b>	<b>160</b>	<b>-</b>	<b>0.00%</b>	<b>854</b>	<b>1,320</b>	<b>466</b>	<b>54.57%</b>	<b>-</b>
<b>Comment Type</b>															
Piston	47	15	15	77	30	23	20	73	(4)	(5.19%)	377	578	201	53.32%	
Turbine	9	4	7	20	7	3	1	11	(9)	(45.00%)	93	199	106	113.98%	
Jet	33	14	13	60	38	20	15	73	13	21.67%	360	485	125	34.72%	
Helo	2	1	-	3	2	-	-	2	(1)	(33.33%)	21	49	28	133.33%	
Unknown	-	-	-	-	1	-	-	1	1	100.00%	3	9	6	200.00%	
<b>Total Comments</b>	<b>91</b>	<b>34</b>	<b>35</b>	<b>160</b>	<b>78</b>	<b>46</b>	<b>36</b>	<b>160</b>	<b>-</b>	<b>0.00%</b>	<b>854</b>	<b>1,320</b>	<b>466</b>	<b>54.57%</b>	<b>-</b>
<b>Operations per Comment</b>				<b>43.4</b>				<b>32.8</b>	<b>(10.6)</b>	<b>(24.49%)</b>	<b>39.2</b>	<b>23.7</b>	<b>(15.4)</b>	<b>(39.40%)</b>	<b>-</b>



## Truckee Tahoe Airport District Households Summary 2015-2021





## Truckee Tahoe Airport District Operations and Community Comment Report Calendar 2021



### OPERATIONS

	2021																
	Jan	Feb	Mar	Q1	Apr	May	Jun	Q2	Jul	Aug	Sep	Q3	Oct	Nov	Dec	Q4	Total
<b>Operations Detail</b>																	
Piston Single	1060	1145	1230	3,435	1,498	1,890	1,943	5,331	1,782	984	1,264	4,030	1,046	1,392	716	3,154	15,950
Piston Twin	55	83	102	240	94	105	120	319	163	75	95	333	74	72	31	177	1,069
Turbo Prop	420	428	488	1,336	334	430	678	1,442	899	379	450	1,728	415	362	243	1,020	5,526
Jet < 12,499 lbs	56	63	69	188	41	62	100	203	135	75	71	281	55	44	23	122	794
Jet 12,500-19,999 lbs	161	207	187	555	149	135	289	573	398	156	131	685	101	121	105	327	2,140
Jet 20,000-49,999 lbs	130	184	182	496	94	117	275	486	501	240	129	870	98	62	50	210	2,062
Jet > 50,000 lbs	32	14	34	80	12	18	-	30	-	2	35	37	12	10	10	32	179
Helicopter	68	48	76	192	78	107	119	304	125	78	181	384	82	68	50	200	1,080
<b>Total Powered Aircraft</b>	<b>1,982</b>	<b>2,172</b>	<b>2,368</b>	<b>6,522</b>	<b>2,300</b>	<b>2,864</b>	<b>3,524</b>	<b>8,688</b>	<b>4,003</b>	<b>1,989</b>	<b>2,356</b>	<b>8,348</b>	<b>1,883</b>	<b>2,131</b>	<b>1,228</b>	<b>5,242</b>	<b>28,800</b>
Gliders	-	-	-	-	1	159	1,004	1,164	1,021	180	158	1,359	-	-	-	-	2,523
<b>Total Operations</b>	<b>1,982</b>	<b>2,172</b>	<b>2,368</b>	<b>6,522</b>	<b>2,301</b>	<b>3,023</b>	<b>4,528</b>	<b>9,852</b>	<b>5,024</b>	<b>2,169</b>	<b>2,514</b>	<b>9,707</b>	<b>1,883</b>	<b>2,131</b>	<b>1,228</b>	<b>5,242</b>	<b>31,323</b>

### COMMENTS

	2021																
	Jan	Feb	Mar	Q1	Apr	May	Jun	Q2	Jul	Aug	Sep	Q3	Oct	Nov	Dec	Q4	Total
<b>Comment Location</b>																	
Alder		2	1	3	-	2	16	18	39	11	12	62	6	1	2	9	92
Glenshire	8	7	19	34	10	6	16	32	77	70	7	154	6	3	1	10	230
Martis Valley Estates	1	1	5	7	7	6	19	32	37	54	51	142	27	16	7	50	231
Northstar/ Martis	3	2	1	6	2	3	8	13	9	11	3	23		2		2	44
Olympic Heights	40	13	20	73	28	21	38	87	118	68	21	207	26	5	3	34	401
Prosser Lakeview				-	3	2	16	21	17	14	2	33	1		1	2	56
Russell Valley	4	1	2	7	1	1	6	8	6	8	7	21	1	5		6	42
Sierra Meadows	1	2	4	7	4	12	4	20	22	9	3	34	3	9	20	32	93
Tahoe Basin				-	-	-	-	-	3	1	2	6		1		1	7
Tahoe Donner	7	2	5	14	3	13	11	27	21	8	4	33	8			8	82
Unknown/Other	1			1	1	4	14	19	6	8	2	16		4	2	6	42
<b>Total Comments</b>	<b>65</b>	<b>30</b>	<b>57</b>	<b>152</b>	<b>59</b>	<b>70</b>	<b>148</b>	<b>277</b>	<b>355</b>	<b>262</b>	<b>114</b>	<b>731</b>	<b>78</b>	<b>46</b>	<b>36</b>	<b>160</b>	<b>1,320</b>
<b>Comment Type</b>																	
Piston	1	1	1	3	31	43	64	138	187	139	38	364	30	23	20	73	578
Turboprop	16	9	18	43	14	10	29	53	62	19	11	92	7	3	1	11	199
Jet	28	14	25	67	12	14	54	80	100	100	65	265	38	20	15	73	485
Helo	20	6	12	38	2	3	1	6	1	2	-	3	2	-	-	2	49
Unknown	-	-	1	1	-	-	-	-	5	2	-	7	1	-	-	1	9
<b>Total Comments</b>	<b>65</b>	<b>30</b>	<b>57</b>	<b>152</b>	<b>59</b>	<b>70</b>	<b>148</b>	<b>277</b>	<b>355</b>	<b>262</b>	<b>114</b>	<b>731</b>	<b>78</b>	<b>46</b>	<b>36</b>	<b>160</b>	<b>1,320</b>
<b>Operations per Comment</b>				<b>43</b>				<b>36</b>				<b>13</b>				<b>33</b>	<b>24</b>



## Truckee Tahoe Airport District Operations and Community Comment Report 2017-2021



	OPERATIONS																									
	2017					2018					2019					2020					2021					Total
	Q1	Q2	Q3	Q4	Total	Q1	Q2	Q3	Q4	Total	Q1	Q2	Q3	Q4	Total	Q1	Q2	Q3	Q4	Total	Q1	Q2	Q3	Q4	Total	
<b>Operations Detail</b>																										
Piston Single	1,614	3,910	6,122	3,332	14,978	2,660	3,727	6,125	3,425	15,937	2,327	3,906	7,000	3,542	16,775	2,646	3,952	6,183	4,221	17,002	3,435	5,331	4,030	3,154	15,950	80,642
Piston Twin	224	261	450	210	1,145	242	323	464	147	1,176	269	236	528	236	1,269	236	184	433	299	1,152	240	319	333	177	1,069	5,811
Turbo Prop	1,398	1,496	2,653	1,395	6,942	1,809	1,381	2,496	1,154	6,840	1,497	1,222	2,619	1,008	6,346	1,393	924	1,917	1,184	5,418	1,336	1,442	1,728	1,020	5,526	31,072
Jet < 12,499 lbs	144	189	451	176	960	165	181	391	159	896	185	190	477	146	998	190	156	343	140	829	188	203	281	122	794	4,477
Jet 12,500-19,999 lbs	290	305	738	266	1,599	349	371	743	288	1,751	278	323	763	294	1,658	378	305	778	422	1,883	555	573	685	327	2,140	9,031
Jet 20,000-49,999 lbs	232	268	564	210	1,274	331	302	691	282	1,606	165	293	809	237	1,504	363	402	803	371	1,939	496	486	870	210	2,062	8,385
Jet > 50,000 lbs	9	63	186	49	307	55	38	149	54	296	30	52	158	30	270	64	56	224	80	424	80	30	37	32	179	1,476
Helicopter	236	272	437	284	1,229	181	183	420	229	1,013	180	290	369	146	985	164	159	270	225	818	192	304	384	200	1,080	5,125
<b>Total Powered Aircraft</b>	<b>4,147</b>	<b>6,764</b>	<b>11,601</b>	<b>5,922</b>	<b>28,434</b>	<b>5,792</b>	<b>6,506</b>	<b>11,479</b>	<b>5,738</b>	<b>29,515</b>	<b>4,931</b>	<b>6,512</b>	<b>12,723</b>	<b>5,639</b>	<b>29,805</b>	<b>5,434</b>	<b>6,138</b>	<b>10,951</b>	<b>6,942</b>	<b>29,465</b>	<b>6,522</b>	<b>8,688</b>	<b>8,348</b>	<b>5,242</b>	<b>28,800</b>	<b>146,019</b>
Gliders	-	888	4,258	-	5,146	-	1,172	4,160	-	5,332	-	1,206	5,368	-	6,574	-	784	3,192	-	3,976	-	1,164	1,359	-	2,523	23,551
<b>Total Operations</b>	<b>4,147</b>	<b>7,652</b>	<b>15,859</b>	<b>5,922</b>	<b>33,580</b>	<b>5,792</b>	<b>7,678</b>	<b>15,639</b>	<b>5,738</b>	<b>34,847</b>	<b>4,931</b>	<b>7,718</b>	<b>18,091</b>	<b>5,639</b>	<b>36,379</b>	<b>5,434</b>	<b>6,922</b>	<b>14,143</b>	<b>6,942</b>	<b>33,441</b>	<b>6,522</b>	<b>9,852</b>	<b>9,707</b>	-	<b>31,323</b>	<b>169,570</b>

	COMMENTS																									
	2017					2018					2019					2020					2021					Total
	Q1	Q2	Q3	Q4	Total	Q1	Q2	Q3	Q4	Total	Q1	Q2	Q3	Q4	Total	Q1	Q2	Q3	Q4	Total	Q1	Q2	Q3	Q4	Total	
<b>Comment Location</b>																										
Alder	-	14	61	2	77	2	19	32	-	53	-	7	38	-	45	-	3	58	8	69	3	18	62	9	92	336
Glenshire	12	15	32	10	69	9	23	30	9	71	4	14	61	-	79	3	44	56	9	112	34	32	154	10	230	561
Martis Valley Estates	15	30	52	6	103	1	13	41	7	62	5	27	37	1	70	8	7	19	26	60	7	32	142	50	231	526
Northstar/ Martis	3	2	20	1	26	3	11	19	2	35	2	5	4	2	13	1	14	47	5	67	6	13	23	2	44	185
Olympic Heights	12	36	81	15	144	31	77	137	34	279	45	47	185	37	314	15	44	80	80	219	73	87	207	34	401	1,357
Prosser Lakeview	3	4	18	6	31	16	23	4	9	52	4	12	49	-	65	-	4	18	1	23	-	21	33	2	56	227
Russell Valley	-	1	4	2	7	-	7	3	5	15	1	-	4	2	7	-	10	35	2	47	7	8	21	6	42	118
Sierra Meadows	1	15	18	4	38	5	4	17	5	31	9	6	20	4	39	2	9	19	14	44	7	20	34	32	93	245
Tahoe Basin	-	3	6	-	9	1	2	2	1	6	-	3	1	-	4	-	2	2	3	7	-	-	6	1	7	33
Tahoe Donner	20	28	55	5	108	8	21	46	-	75	1	45	67	6	119	3	91	88	11	193	14	27	33	8	82	577
Unknown/Other	-	2	3	-	5	3	1	6	1	11	-	3	9	4	16	4	1	7	1	13	1	19	16	6	42	87
<b>Total Comments</b>	<b>66</b>	<b>150</b>	<b>350</b>	<b>51</b>	<b>617</b>	<b>79</b>	<b>201</b>	<b>337</b>	<b>73</b>	<b>690</b>	<b>71</b>	<b>169</b>	<b>475</b>	<b>56</b>	<b>771</b>	<b>36</b>	<b>229</b>	<b>429</b>	<b>160</b>	<b>854</b>	<b>152</b>	<b>277</b>	<b>731</b>	<b>160</b>	<b>1,320</b>	<b>4,252</b>
<b>Comment Type</b>																										
Piston	19	70	119	21	229	29	85	131	48	293	48	88	240	48	424	15	122	163	77	377	3	138	364	73	578	1,901
Turbine	20	19	59	13	111	18	44	79	15	156	14	24	80	3	121	9	21	43	20	93	43	53	92	11	199	680
Jet	16	50	155	11	232	22	63	109	10	204	7	57	134	5	203	9	83	208	60	360	67	80	265	73	485	1,484
Helo	7	4	4	3	18	8	6	9	-	23	1	-	16	-	17	3	3	12	3	21	38	6	3	2	49	128
Unknown	4	7	13	3	27	2	3	9	-	14	1	-	5	-	6	-	-	3	-	3	1	-	7	1	9	59
<b>Total Comments</b>	<b>66</b>	<b>150</b>	<b>350</b>	<b>51</b>	<b>617</b>	<b>79</b>	<b>201</b>	<b>337</b>	<b>73</b>	<b>690</b>	<b>71</b>	<b>169</b>	<b>475</b>	<b>56</b>	<b>771</b>	<b>36</b>	<b>229</b>	<b>429</b>	<b>160</b>	<b>854</b>	<b>152</b>	<b>277</b>	<b>731</b>	<b>160</b>	<b>1,320</b>	<b>4,252</b>
<b>Operations per Comment</b>	<b>63</b>	<b>51</b>	<b>45</b>	<b>116</b>	<b>54</b>	<b>73</b>	<b>38</b>	<b>46</b>	<b>79</b>	<b>51</b>	<b>69</b>	<b>46</b>	<b>38</b>	<b>101</b>	<b>47</b>	<b>151</b>	<b>30</b>	<b>33</b>	<b>43</b>	<b>39</b>	<b>36</b>	<b>25</b>	<b>19</b>	<b>43</b>	<b>25</b>	<b>40</b>