

# East Hampton Airport

Seasonal Tower & FT Data

VISIT SEPTEMBER 14th & 15th, 2015

## Seasonal Tower



### From Memorial Day to Labor Day

1. Separates Traffic
2. Directs NAP use
3. Ground / Clearance
4. Open 7 AM - 10 PM
5. < > TRACON

## Noise Abatement thru a tower Opinions

1. Show volume of aircraft (noise) correct
2. The tower accepts noise but doesn't guarantee the noise
3. Don't believe there are any "unintended consequences"
4. It is easy to attribute the sound of the tower to light only
5. MOA between Tower & TRACON



## HTO Interesting Points Opinion

1. 20,000 Ops per year
2. 20,000 Complaints a year / 20,000,000 ops
3. Helicopters are 90% of complaints
4. Helicopters that I witnessed and others supported one quarter that the job on TRACON wing
5. The airport has never been integrated with the greater community
6. Six pending lawsuits
7. 3 million in legal fees
8. Overflight is a significant source of annoyance
9. HTO's are different from what the public understand
10. Legacy management issues between Tower & Airport

Our hands are tied



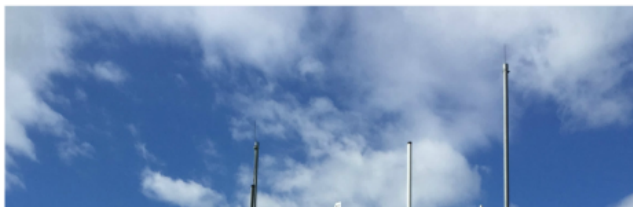
# East Hampton Airport



Seasonal Tower & FT Data

VISIT SEPTEMBER 14th & 15th, 2015

## Seasonal Tower



From Memorial Day to  
Labor Day

## Noise Abatement thru a tower Opinions

1. Shear volume of aircraft require control.
2. The tower assigns routes but doesn't guarantee the peace.
3. Don't believe there are any "unintended consequences"
4. It's a way to enforce the curfew if the tower is open early
5. MOA between Airport / TRACON



HTO Interesting Points

---

# Seasonal Tower

---



## From Memorial Day to Labor Day

1. Separates Traffic
2. Directs NAP use
3. Ground / Clearance
4. Open 7 AM - 10 PM
5. < > TRACON

---

# Noise Abatement thru a tower

## Opinions

---

1. Shear volume of aircraft require control.
2. The tower assigns routes but doesn't guarantee the peace.
3. Don't believe there are any "unintended consequences"
4. It's a way to enforce the curfew if the tower is open early
5. MOA between Airport / TRACON



---

# HTO Interesting Points

## Opinion

---

1. 23,000 Ops per year
2. 23,000 Complaints a year /  
OUTSOURCED

3. Helicopter are 90% of complaints

4. Helicopters that I witnessed and others supported are quieter than the jets or TP fixed wing

5. The airport has never been integrated with the greater community.

6. Six pending lawsuits

7. 3 Million in legal fees

8. Overflight is a significant source of annoyance

9. NAP's are different from what the pilots recommend

10. Legacy management issues between Town & Airport.

the jets or TP fixed wing

5. The airport has never been integrated with the greater community.

pilots recommend

10. Legacy management issues between Town & Airport.

---

**Our hands are tied**