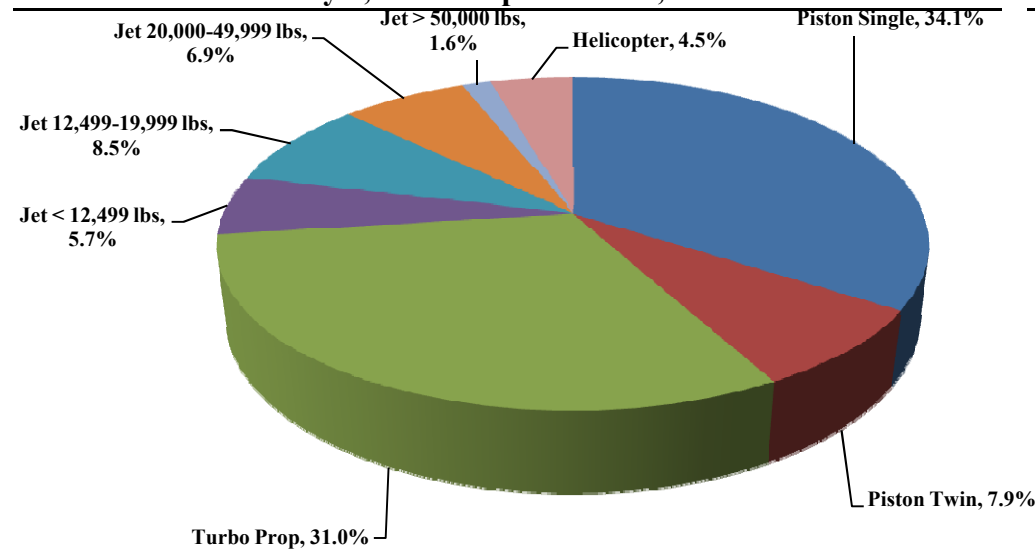




TRUCKEE TAHOE AIRPORT DISTRICT Operations and Community Comment Report as of 9/30/15

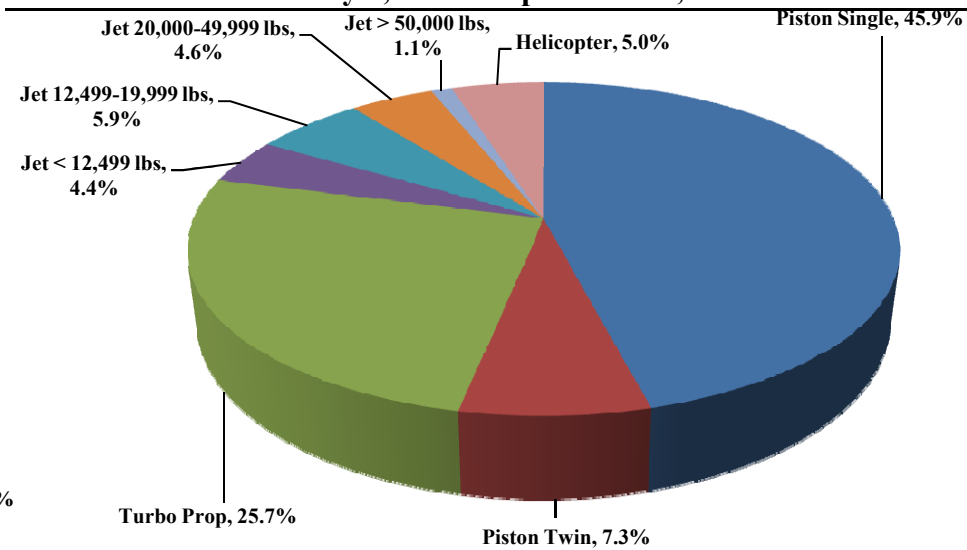


Current Quarter | Operations
July 1, 2015 - September 30, 2015



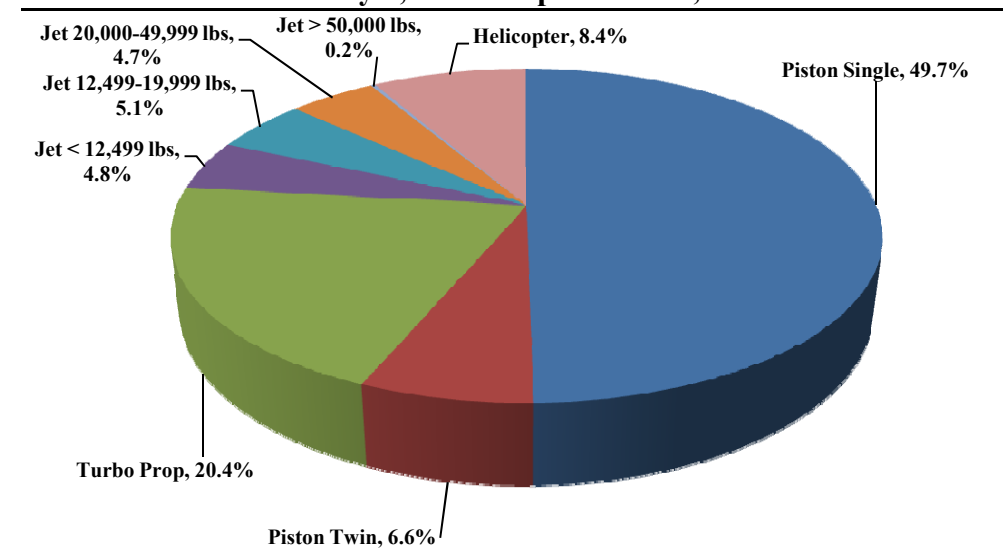
Total Powered Aircraft 7,340

Year-to-Date | Operations
January 1, 2015 - September 30, 2015



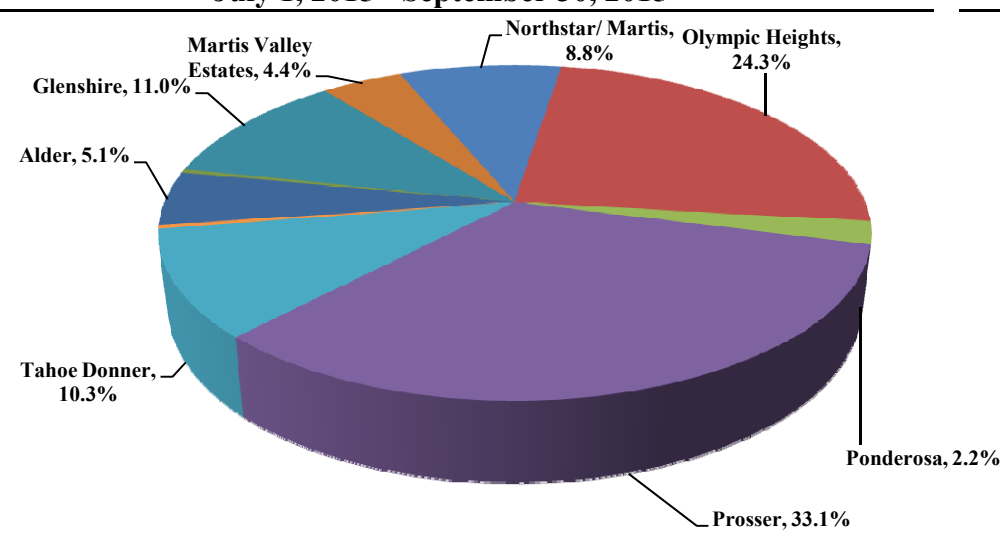
Total Powered Aircraft 17,860

Historic | Operations
January 1, 2011 - September 30, 2015



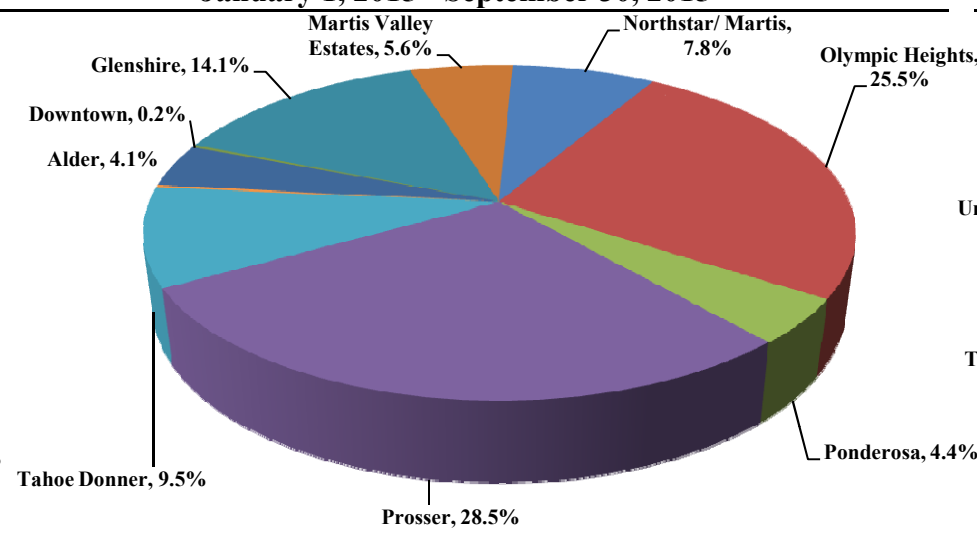
Total Powered Aircraft 83,725

Current Quarter | Comments
July 1, 2015 - September 30, 2015



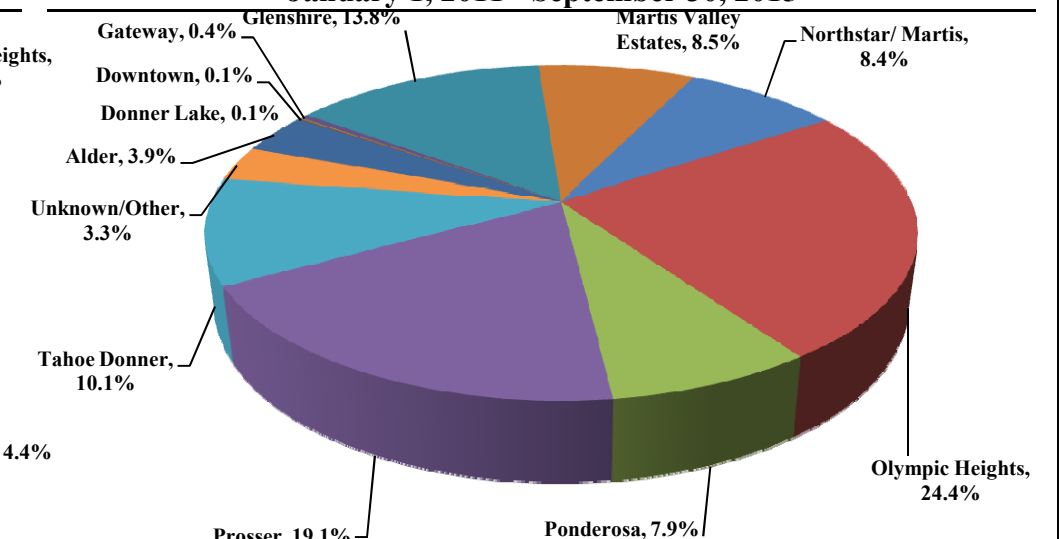
Total Comments 272
Operations / Comment 42

Year-to-Date | Comments
January 1, 2015 - September 30, 2015



Total Comments 411
Operations / Comment 56

Historic | Comments
January 1, 2011 - September 30, 2015



Total Comments 960
Operations / Comment 114

Notes

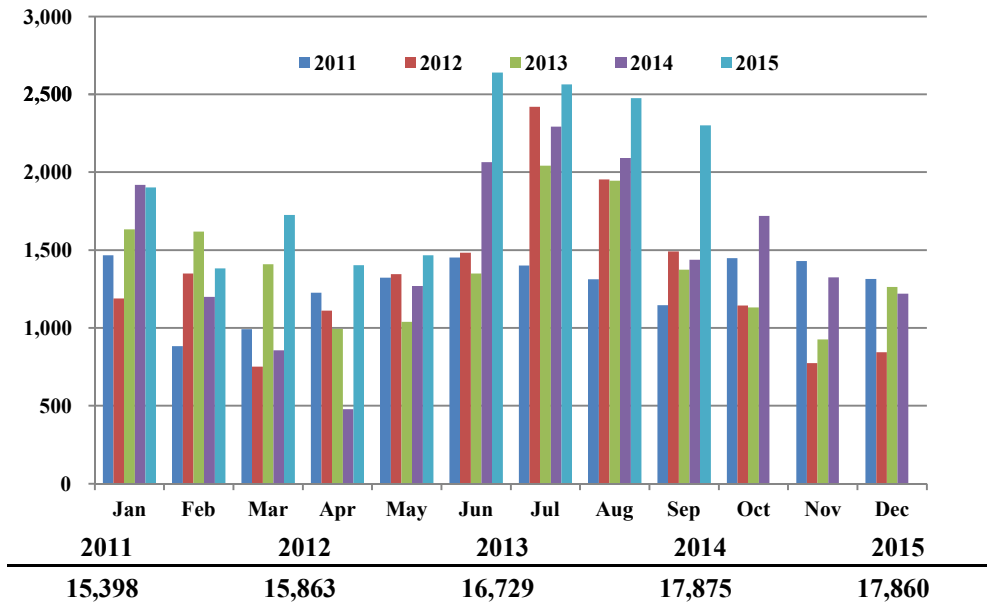
April 2014 - Launched new TTAD Website with 'Report Noise' link.
Operations graphs above use Total Powered Aircraft. Glider operations are not included.
Jets > 50,000lbs subcategory was added in Q1 2015. Reporting and analysis prior to 2015 is not included.



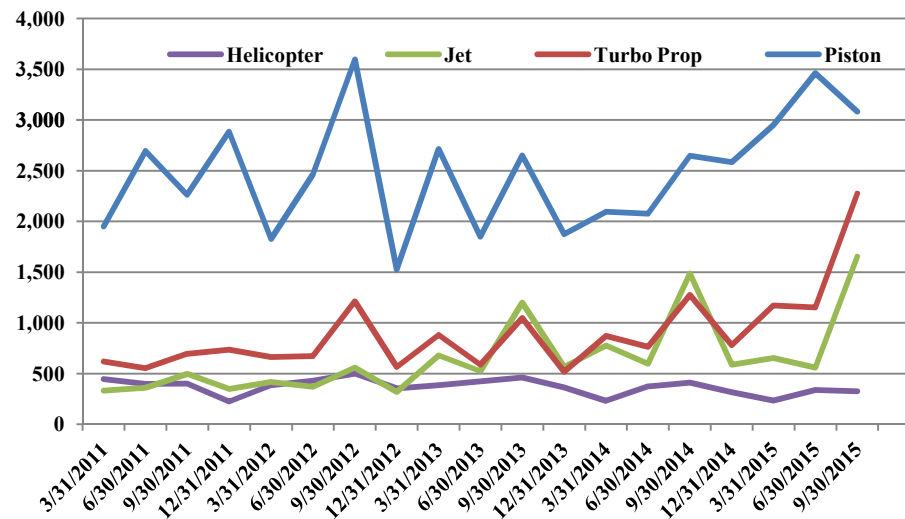
TRUCKEE TAHOE AIRPORT DISTRICT Operations and Community Comment Report as of 9/30/15



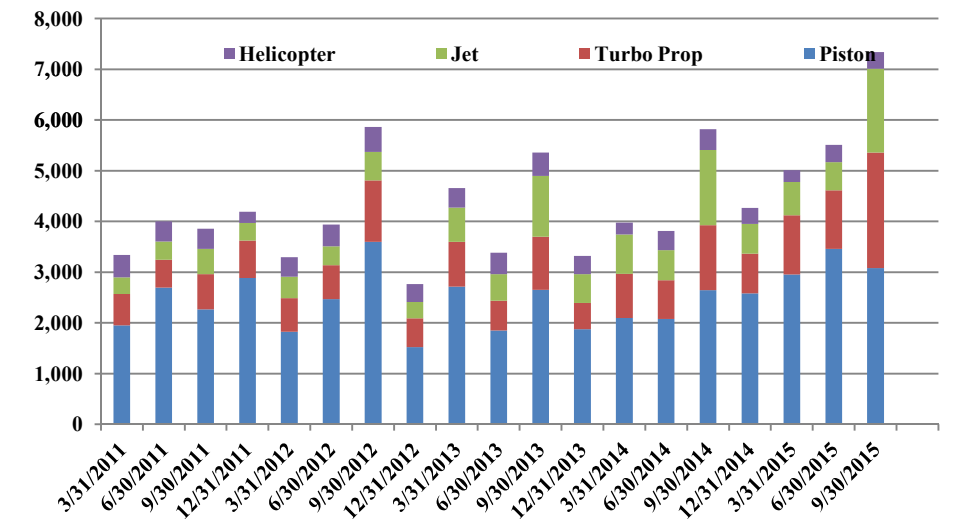
Operations | by Month by Year
January 1, 2011 - September 30, 2015



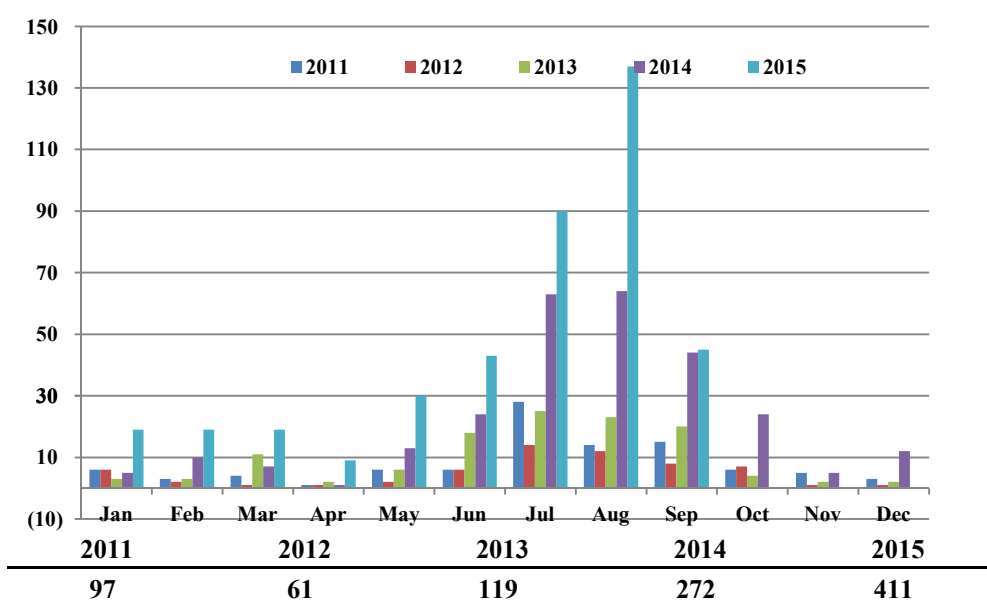
Operations | by Type by Quarter
January 1, 2011 - September 30, 2015



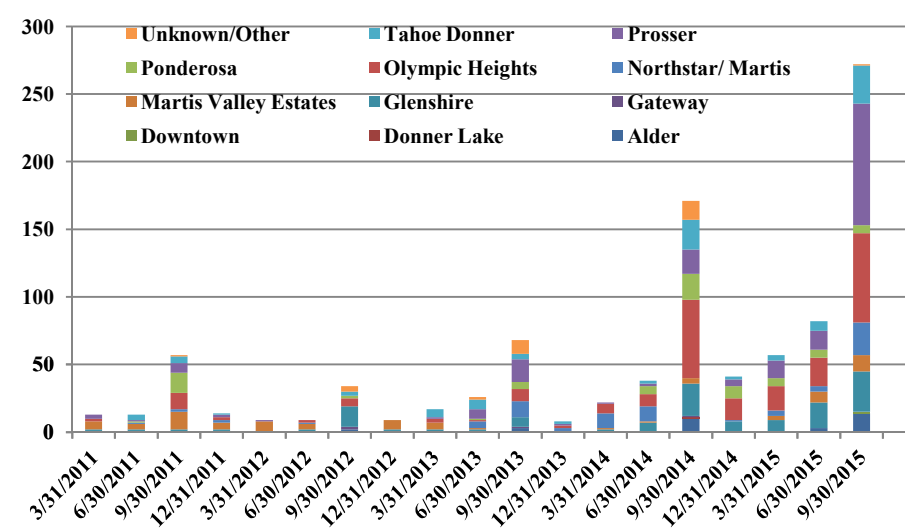
Operations | Mix by Type by Quarter
January 1, 2011 - September 30, 2015



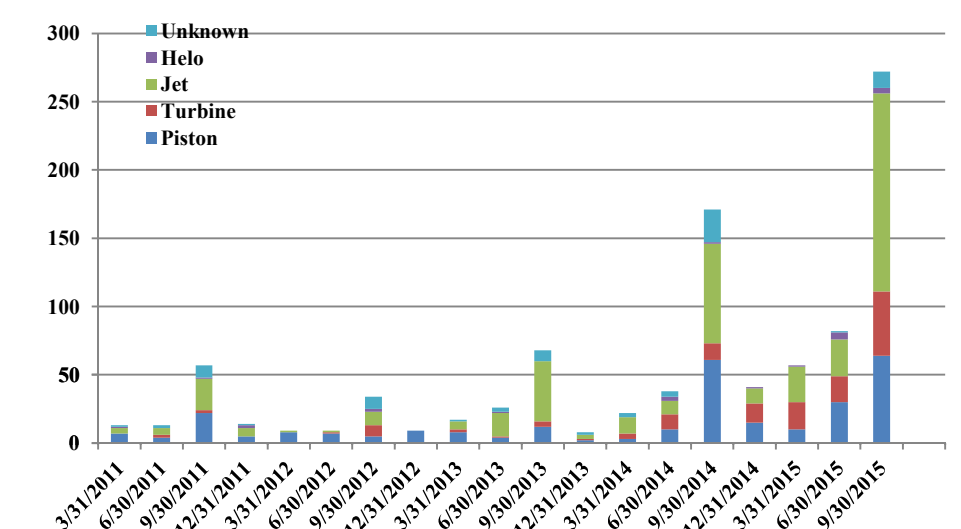
Comments | by Month by Year
January 1, 2011 - September 30, 2015



Comments | by Locale by Quarter
January 1, 2011 - September 30, 2015



Comments | by Type by Quarter
January 1, 2011 - September 30, 2015



Notes

April 2014 - Launched new TTAD Website with 'Report Noise' link.
 Operations graphs above use Total Powered Aircraft. Glider operations are not included.
 Jets > 50,000lbs subcategory was added in Q1 2015. Reporting and analysis prior to 2015 is not included.



Truckee Tahoe Airport District
Operations and Community Comment Report
as of 9/30/15



	OPERATIONS										Year over Year				Notes			
	2014				2015				difference	%	10/1/13-9/30/14	10/1/14-9/30/15	difference	%				
	Jul	Aug	Sep	Q3	Jul	Aug	Sep	Q3										
Operations Detail																		
Piston Single	919	814	605	2,338	705	780	1,017	2,502	164	7.01%	7,596	10,551	2,955	38.90%				
Piston Twin	118	108	84	310	215	203	163	581	271	87.42%	1,100	1,529	429	39.00%				
Turbo Prop	514	468	294	1,276	857	791	627	2,275	999	78.29%	3,429	5,378	1,949	56.84%				
Jet < 12,499 lbs	182	192	94	468	172	112	131	415	(53)	(11.32%)	1,302	983	(319)	(24.50%)				
Jet 12,499-19,999 lbs	156	158	112	426	247	215	160	622	196	46.01%	1,019	1,285	266	26.10%				
Jet 20,000-49,999 lbs	246	222	126	594	195	198	110	503	(91)	(15.32%)	1,105	982	(123)	(11.13%)				
Jet > 50,000 lbs	-	-	-	-	58	49	8	115	115	100.00%	-	202	202	100.00%				
Helicopter	158	130	122	410	115	127	85	327	(83)	(20.24%)	1,381	1,216	(165)	(11.95%)				
Total Powered Aircraft	2,293	2,092	1,437	5,822	2,564	2,475	2,301	7,340	1,518	26.07%	16,932	22,126	5,194	30.68%				
Gliders	1,319	1,319	1,319	3,957	1,840	1,432	836	4,108	151	3.82%	4,889	5,217	328	6.71%				
Total Operations	3,612	3,411	2,756	9,779	4,404	3,907	3,137	11,448	1,669	17.07%	21,821	27,343	5,522	25.31%				

	COMMENTS										Year over Year				Notes			
	2014				2015				difference	%	10/1/13-9/30/14	10/1/14-9/30/15	difference	%				
	Jul	Aug	Sep	Q3	Jul	Aug	Sep	Q3										
Comment Location																		
Alder	6	3	1	10	10	3	1	14	4	40.00%	10	17	7	70.00%				
Donner Lake	-	1	-	1	-	-	-	-	(1)	(100.00%)	1	-	(1)	(100.00%)				
Downtown	-	-	-	-	-	-	1	1	1	100.00%	-	1	1	100.00%				
Gateway	-	-	1	1	-	-	-	-	(1)	(100.00%)	1	-	(1)	(100.00%)				
Glenshire	7	14	3	24	12	14	4	30	6	25.00%	33	66	33	100.00%				
Martis Valley Estates	3	1	-	4	6	3	3	12	8	200.00%	6	23	17	283.33%				
Northstar/ Martis	-	-	-	-	11	11	2	24	24	100.00%	25	33	8	32.00%				
Olympic Heights	24	21	13	58	20	35	11	66	8	13.79%	76	121	45	59.21%				
Ponderosa	2	4	13	19	1	4	1	6	(13)	(68.42%)	25	27	2	8.00%				
Prosser	5	4	9	18	16	58	16	90	72	400.00%	22	122	100	454.55%				
Tahoe Donner	10	10	2	22	13	9	6	28	6	27.27%	26	41	15	57.69%				
Unknown/Other	6	6	2	14	1	-	-	1	(13)	(92.86%)	14	1	(13)	(92.86%)				
Total Comments	63	64	44	171	90	137	45	272	101	59.06%	239	452	213	89.12%				
Comment Type																		
Piston	23	21	17	61	22	29	13	64	3	4.92%	76	119	43	56.58%				
Turbine	6	3	3	12	18	21	8	47	35	291.67%	28	100	72	257.14%				
Jet	24	28	21	73	47	77	21	145	72	98.63%	98	209	111	113.27%				
Helo	1	-	-	1	2	2	-	4	3	300.00%	4	11	7	175.00%				
Unknown	9	12	3	24	1	8	3	12	(12)	(50.00%)	33	13	(20)	(60.61%)				
Total Comments	63	64	44	171	90	137	45	272	101	59.06%	239	452	213	89.12%				
Operations per Comment	-	-	-	-	-	-	-	-	-	0.00%	-	-	-	-				
				57				42	(15)	(26.40%)	91	60	(31)	(33.74%)				