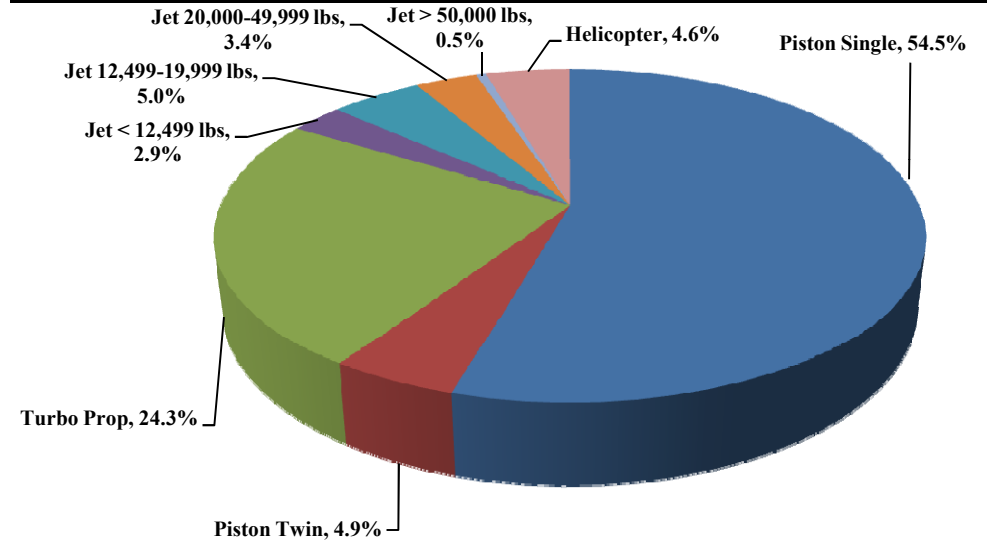




# TRUCKEE TAHOE AIRPORT DISTRICT Operations and Community Comment Report as of 12/31/15

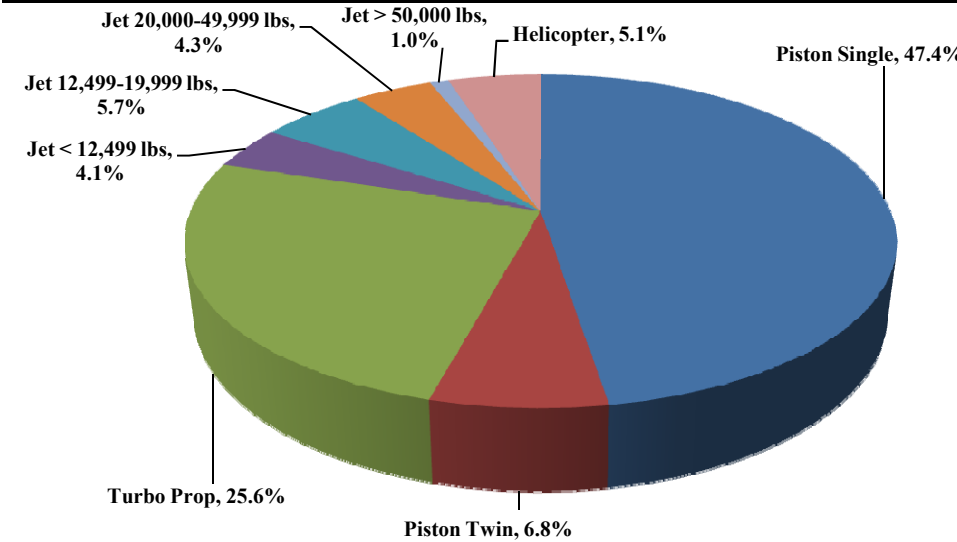


**Current Quarter | Operations**  
October 1, 2015 - December 31, 2015



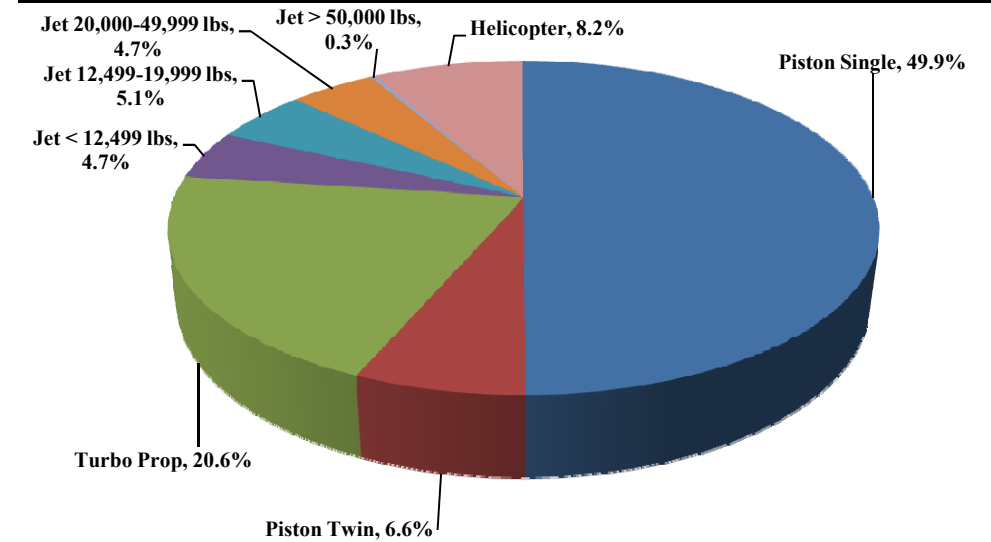
**Total Powered Aircraft 4,637**

**Year-to-Date | Operations**  
January 1, 2015 - December 31, 2015



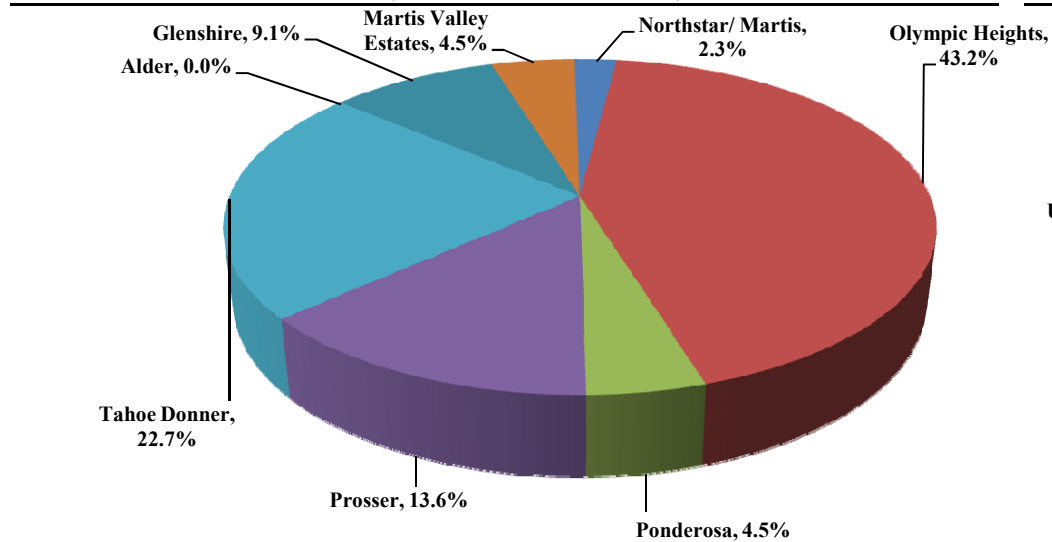
**Total Powered Aircraft 22,505**

**Historic | Operations**  
January 1, 2011 - December 31, 2015



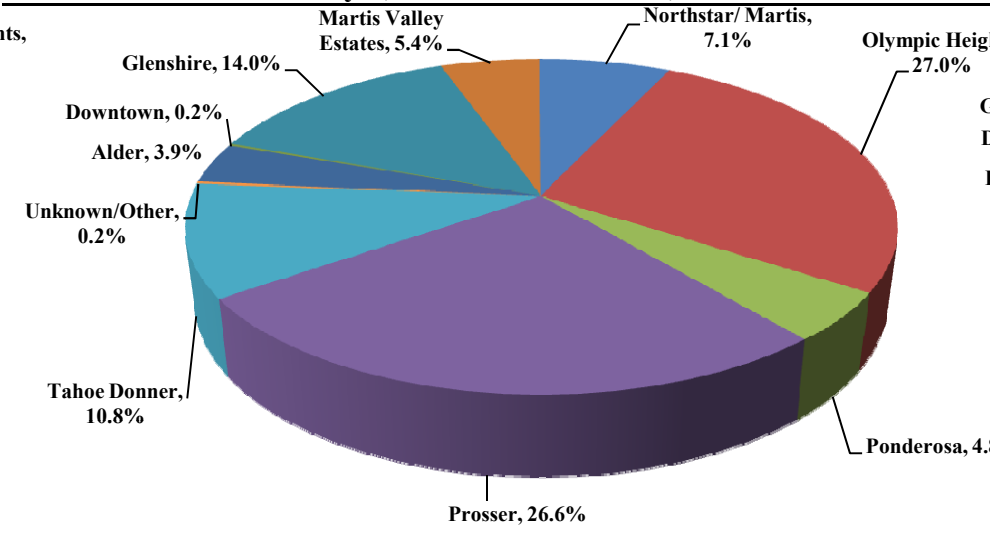
**Total Powered Aircraft 88,370**

**Current Quarter | Comments**  
October 1, 2015 - December 31, 2015



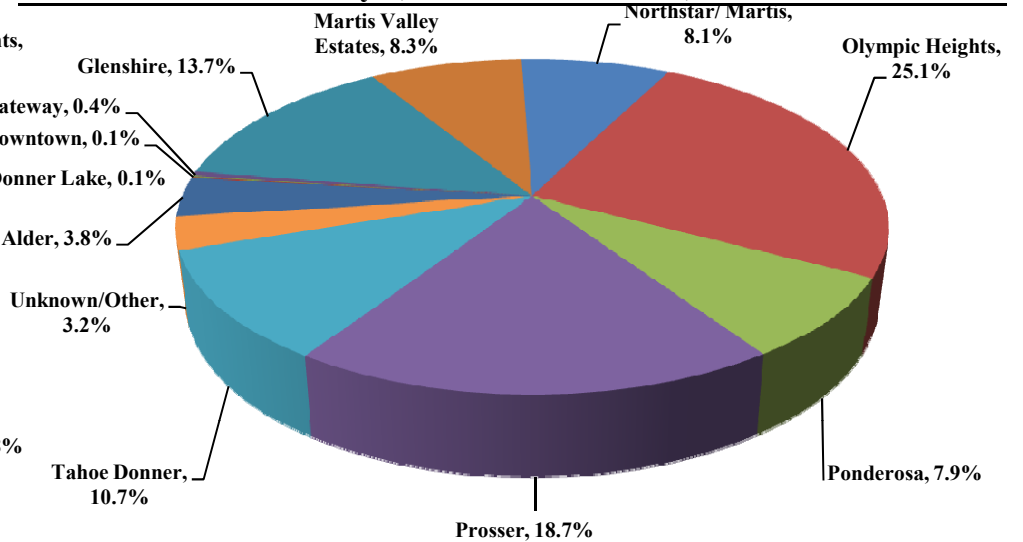
**Total Comments 44**  
**Operations / Comment 105**

**Year-to-Date | Comments**  
January 1, 2015 - December 31, 2015



**Total Comments 463**  
**Operations / Comment 60**

**Historic | Comments**  
January 1, 2011 - December 31, 2015



**Total Comments 1,012**  
**Operations / Comment 113**

**Notes**

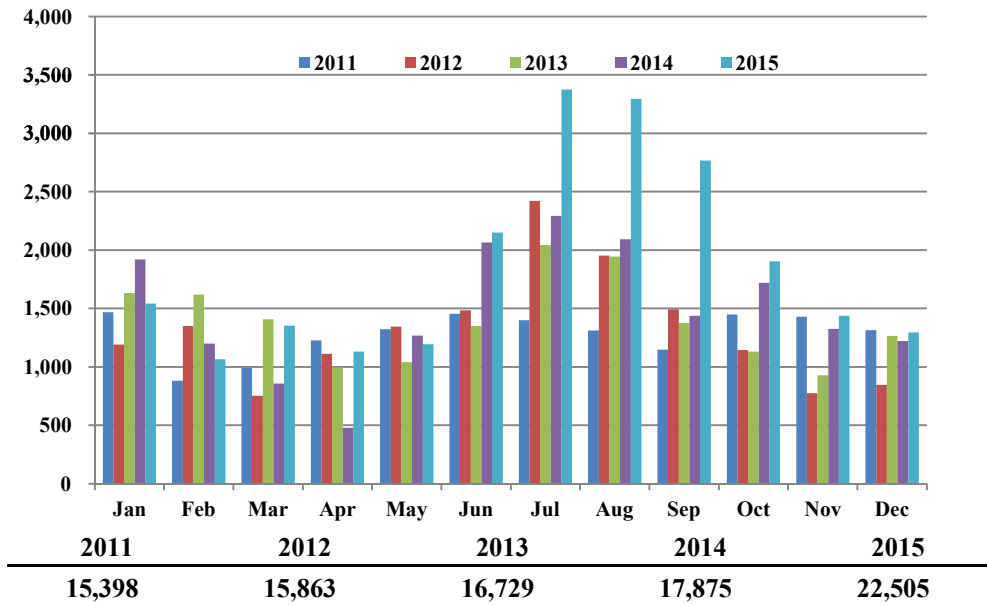
April 2014 - Launched new TTAD Website with 'Report Noise' link.  
Operations graphs above use Total Powered Aircraft. Glider operations are not included.  
Jets > 50,000lbs subcategory was added in Q1 2015. Reporting and analysis prior to 2015 is not included.



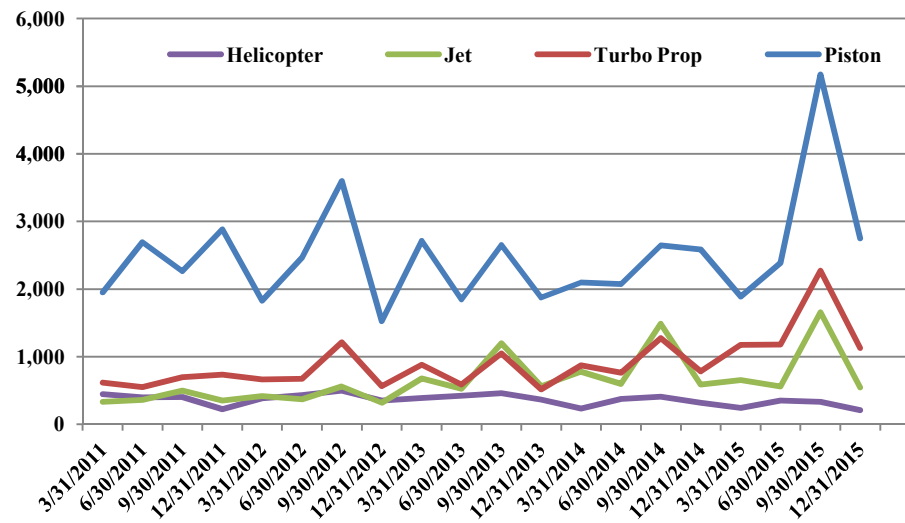
# TRUCKEE TAHOE AIRPORT DISTRICT Operations and Community Comment Report as of 12/31/15



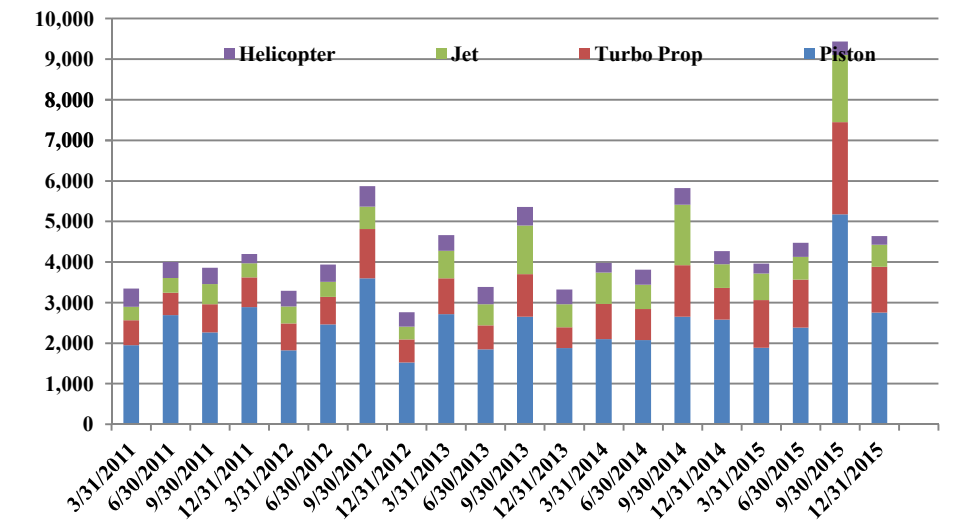
**Operations | by Month by Year**  
January 1, 2011 - December 31, 2015



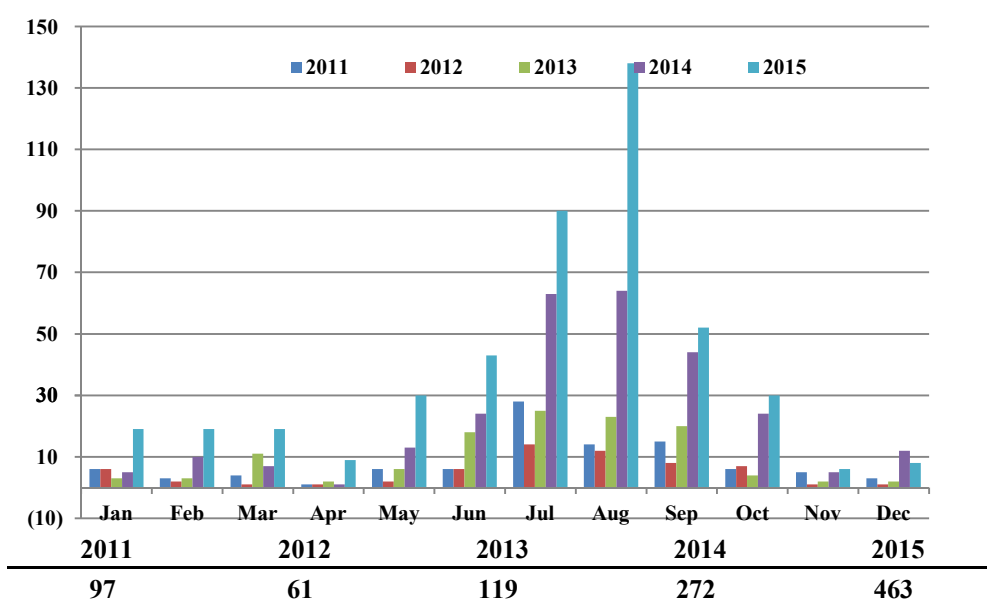
**Operations | by Type by Quarter**  
January 1, 2011 - December 31, 2015



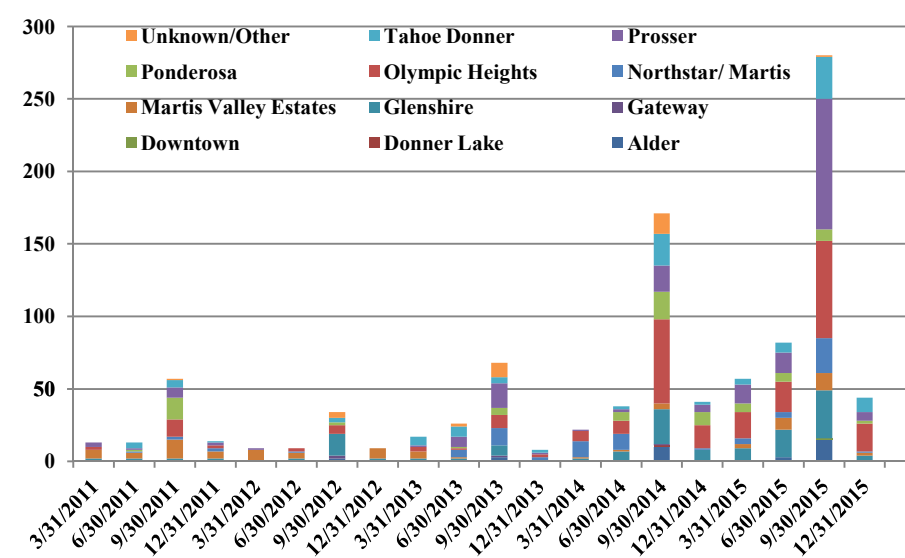
**Operations | Mix by Type by Quarter**  
January 1, 2011 - December 31, 2015



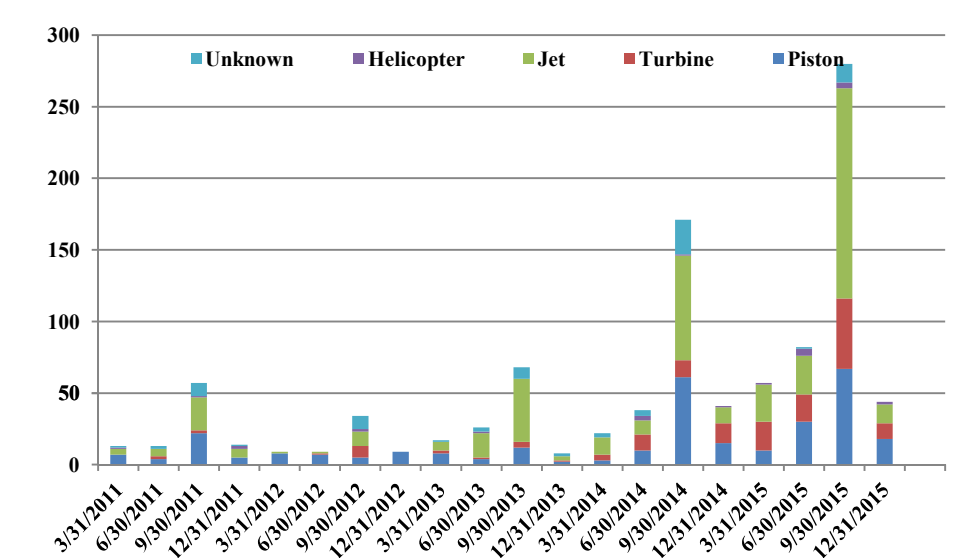
**Comments | by Month by Year**  
January 1, 2011 - December 31, 2015



**Comments | by Locale by Quarter**  
January 1, 2011 - December 31, 2015



**Comments | by Type by Quarter**  
January 1, 2011 - December 31, 2015



**Notes**

April 2014 - Launched new TTAD Website with 'Report Noise' link.  
 Operations graphs above use Total Powered Aircraft. Glider operations are not included.  
 Jets > 50,000lbs subcategory was added in Q1 2015. Reporting and analysis prior to 2015 is not included.



## Truckee Tahoe Airport District Operations and Community Comment Report as of 12/31/15



	OPERATIONS										Year over Year				Notes				
	2014				2015				difference	%	1/1/14-12/31/14	1/1/15-12/31/15	difference	%					
	Oct	Nov	Dec	Q4	Oct	Nov	Dec	Q4											
<b>Operations Detail</b>																			
Piston Single	1,021	787	543	2,351	1,148	871	506	2,525	174	7.40%	8,293	10,676	2,383	28.74%					
Piston Twin	113	73	46	232	87	71	69	227	(5)	(2.16%)	1,110	1,524	414	37.30%					
Turbo Prop	262	222	296	780	360	318	451	1,129	349	44.74%	3,691	5,756	2,065	55.95%					
Jet < 12,499 lbs	74	48	70	192	54	29	50	133	(59)	(30.73%)	1,276	924	(352)	(27.59%)					
Jet 12,499-19,999 lbs	82	42	102	226	100	48	83	231	5	2.21%	1,027	1,290	263	25.61%					
Jet 20,000-49,999 lbs	58	36	74	168	52	33	71	156	(12)	(7.14%)	1,145	970	(175)	(15.28%)					
Jet > 50,000 lbs	-	-	-	-	3	4	18	25	25	100.00%	-	227	227	100.00%					
Helicopter	110	117	90	317	100	64	47	211	(106)	(33.44%)	1,333	1,138	(195)	(14.63%)					
Total Powered Aircraft	1,720	1,325	1,221	4,266	1,904	1,438	1,295	4,637	371	8.70%	17,875	22,505	4,630	25.90%					
Gliders	109	-	-	109	-	-	-	-	(109)	(100.00%)	4,889	5,108	219	4.48%					
Total Operations	1,829	1,325	1,221	4,375	1,904	1,438	1,295	4,637	262	5.99%	22,764	27,613	4,849	21.30%					

	COMMENTS										Year over Year				Notes				
	2014				2015				difference	%	1/1/14-12/31/14	1/1/15-12/31/15	difference	%					
	Oct	Nov	Dec	Q4	Oct	Nov	Dec	Q4											
<b>Comment Location</b>																			
Alder	-	-	-	-	-	-	-	-	-	0.00%	10	18	8	80.00%					
Donner Lake	-	-	-	-	-	-	-	-	-	0.00%	1	-	(1)	(100.00%)					
Downtown	-	-	-	-	-	-	-	-	-	0.00%	-	1	1	100.00%					
Gateway	-	-	-	-	-	-	-	-	-	0.00%	1	-	(1)	(100.00%)					
Glenshire	2	-	6	8	3	1	-	4	(4)	(50.00%)	41	65	24	58.54%					
Martis Valley Estates	-	-	-	-	1	1	-	2	2	100.00%	6	25	19	316.67%					
Northstar/ Martis	-	-	1	1	1	-	-	1	-	0.00%	23	33	10	43.48%					
Olympic Heights	9	5	2	16	12	1	6	19	3	18.75%	90	125	35	38.89%					
Ponderosa	9	-	-	9	2	-	-	2	(7)	(77.78%)	34	22	(12)	(35.29%)					
Prosser	4	-	1	5	3	1	2	6	1	20.00%	26	123	97	373.08%					
Tahoe Donner	-	-	2	2	8	2	-	10	8	400.00%	26	50	24	92.31%					
Unknown/Other	-	-	-	-	-	-	-	-	-	0.00%	14	1	(13)	(92.86%)					
Total Comments	24	5	12	41	30	6	8	44	3	7.32%	272	463	191	70.22%					
<b>Comment Type</b>																			
Piston	12	1	2	15	12	2	4	18	3	20.00%	89	125	36	40.45%					
Turbine	5	3	6	14	7	2	2	11	(3)	(21.43%)	41	99	58	141.46%					
Jet	6	1	4	11	9	2	2	13	2	18.18%	106	213	107	100.94%					
Helo	1	-	-	1	2	-	-	2	1	100.00%	5	12	7	140.00%					
Unknown	-	-	-	-	-	-	-	-	-	0.00%	31	14	(17)	(54.84%)					
Total Comments	24	5	12	41	30	6	8	44	3	7.32%	272	463	191	70.22%					
<b>Operations per Comment</b>	-	-	-	107	-	-	-	105	(1)	(1.24%)	84	60	(24)	(28.74%)					

**Truckee Tahoe Airport District  
Annual Operations Summary  
2011-2015**

	Operations							Operations Mix						
	2011	2012	2013	2014	2015	Total	Avg. Change	2011	2012	2013	2014	2015	Total	Change
<b>Operations Detail</b>														
Piston Single	8,610	8,484	8,047	8,293	10,676	44,110	5.52%	41.21%	39.72%	37.22%	36.43%	38.66%	38.61%	-2.55%
Piston Twin	1,182	931	1,042	1,110	1,524	5,789	6.56%	5.66%	4.36%	4.82%	4.88%	5.52%	5.07%	-0.14%
Total Piston	9,792	9,415	9,089	9,403	12,200	49,899	5.65%	46.87%	44.08%	42.04%	41.31%	44.18%	43.68%	-2.68%
Turbo Prop	2,602	3,116	3,036	3,691	5,756	18,201	21.96%	12.45%	14.59%	14.04%	16.21%	20.85%	15.93%	8.39%
Jet < 12,499 lbs	500	441	1,046	1,276	924	4,187	16.59%	2.39%	2.06%	4.84%	5.61%	3.35%	3.66%	0.95%
Jet 12,499-19,999 lbs	590	642	946	1,027	1,290	4,495	21.60%	2.82%	3.01%	4.38%	4.51%	4.67%	3.93%	1.85%
Jet 20,000-49,999 lbs	447	583	974	1,145	970	4,119	21.37%	2.14%	2.73%	4.51%	5.03%	3.51%	3.61%	1.37%
Jet > 50,000 lbs	-	-	-	-	227	227	n/a	0.00%	0.00%	0.00%	0.00%	0.82%	0.20%	0.82%
Total Jet	1,537	1,666	2,966	3,448	3,411	13,028	22.05%	7.36%	7.80%	13.72%	15.15%	12.35%	11.40%	5.00%
Helicopter	1,467	1,666	1,638	1,333	1,138	7,242	-6.15%	7.02%	7.80%	7.58%	5.86%	4.12%	6.34%	-2.90%
Total Powered Aircraft	15,398	15,863	16,729	17,875	22,505	88,370	9.95%	73.70%	74.27%	77.38%	78.52%	81.50%	77.35%	7.81%
Gliders	5,496	5,496	4,889	4,889	5,108	25,878	-1.81%	26.30%	25.73%	22.62%	21.48%	18.50%	22.65%	-7.81%
Total Operations	20,894	21,359	21,618	22,764	27,613	114,248	7.22%	100.00%	100.00%	100.00%	100.00%	100.00%	100.00%	0.00%