

# NOISE COMPLAINT REPORT

**COMPLAINT ID:** 19877

**COMPLAINT TYPE:** Loud Disturbance

**OPERATION TYPE:** Departure

**RUNWAY:** 29

**A/C TYPE:** BE36

**DATE AND TIME:** Oct 02 2015, 10:18 PM

**POINT OF CLOSEST APPROACH(PCA):** 0.46 nm

**ALTITUDE AT PCA:** 7000 ft

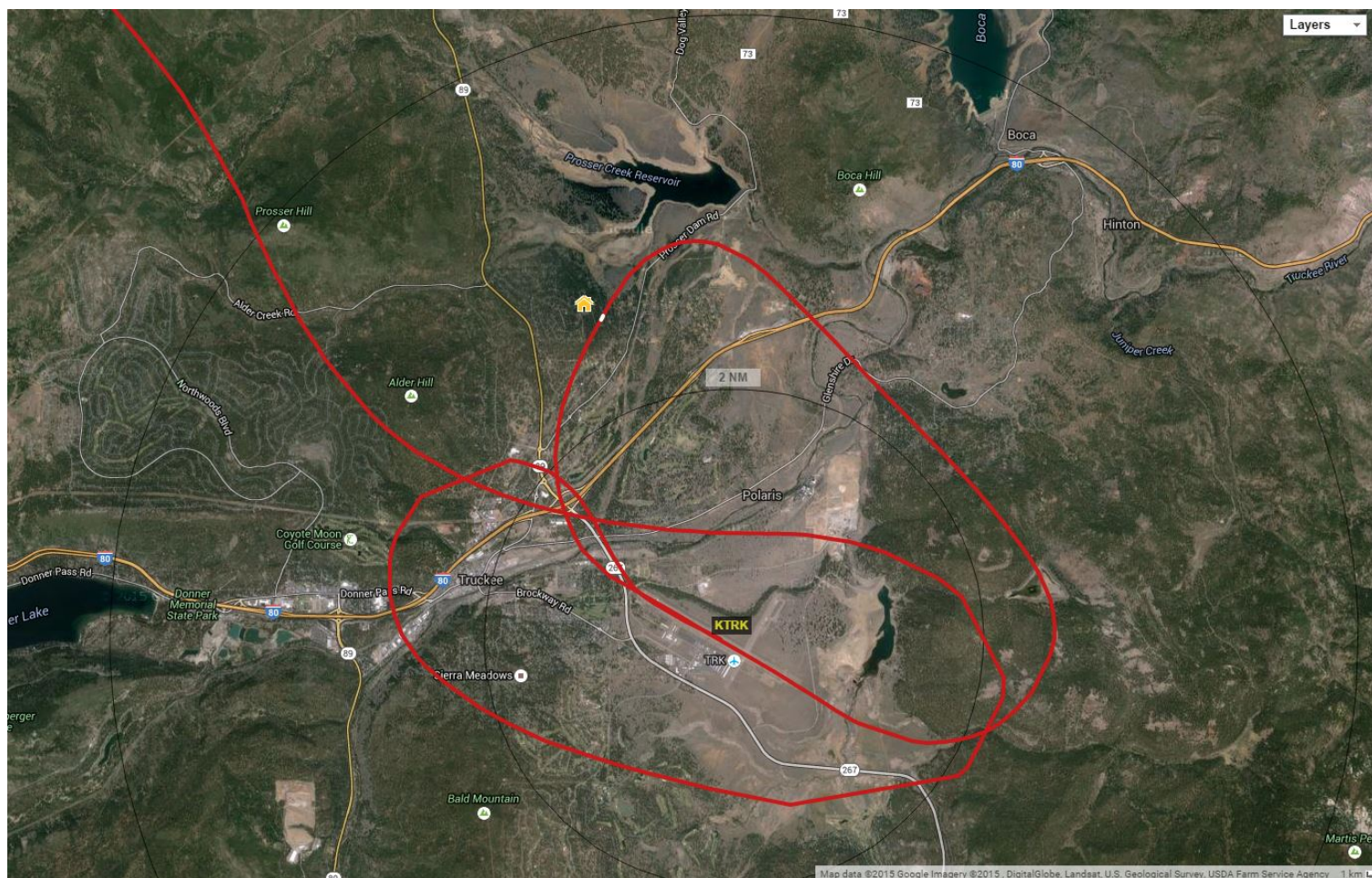


10:18 PM Bypass departure over I-80. Commenter, a TTAD employee, was disturbed by the time of the operation. Staff spoke to operator who apologized and said he would try to curtail his departures to before 10 PM. Work ran late on this day according to the PIC.

# NOISE COMPLAINT REPORT

COMPLAINT ID: 19893  
COMPLAINT TYPE: Low  
OPERATION TYPE: Arrival  
RUNWAY: 11  
A/C TYPE: G280

DATE AND TIME: Oct 03 2015, 10:01 AM  
POINT OF CLOSEST APPROACH(PCA): 0.14 nm  
ALTITUDE AT PCA: 6700 ft



A Gulfstream G280 set up for 11. A VFR target was on base and turned final while and landed at 09:54 while 855A was about 1 mile out. The Gulfstream made a right 360 pattern at 8,000' msl and came back around to land on 11. For whatever reason the landing was aborted, and the aircraft departed making left crosswind to the north and over Prosser Res. The jet came back in and flew over Prosser Lakeview Estates on the way back in. PCA over commenter location was 6,700'. Staff called operator.

2 Comments came from this operation: 1 in Sierra Meadows and 1 in Prosser Lakeview

# NOISE COMPLAINT REPORT

**COMPLAINT ID:** 19874

**COMPLAINT TYPE:** Off Course

**OPERATION TYPE:** Departure

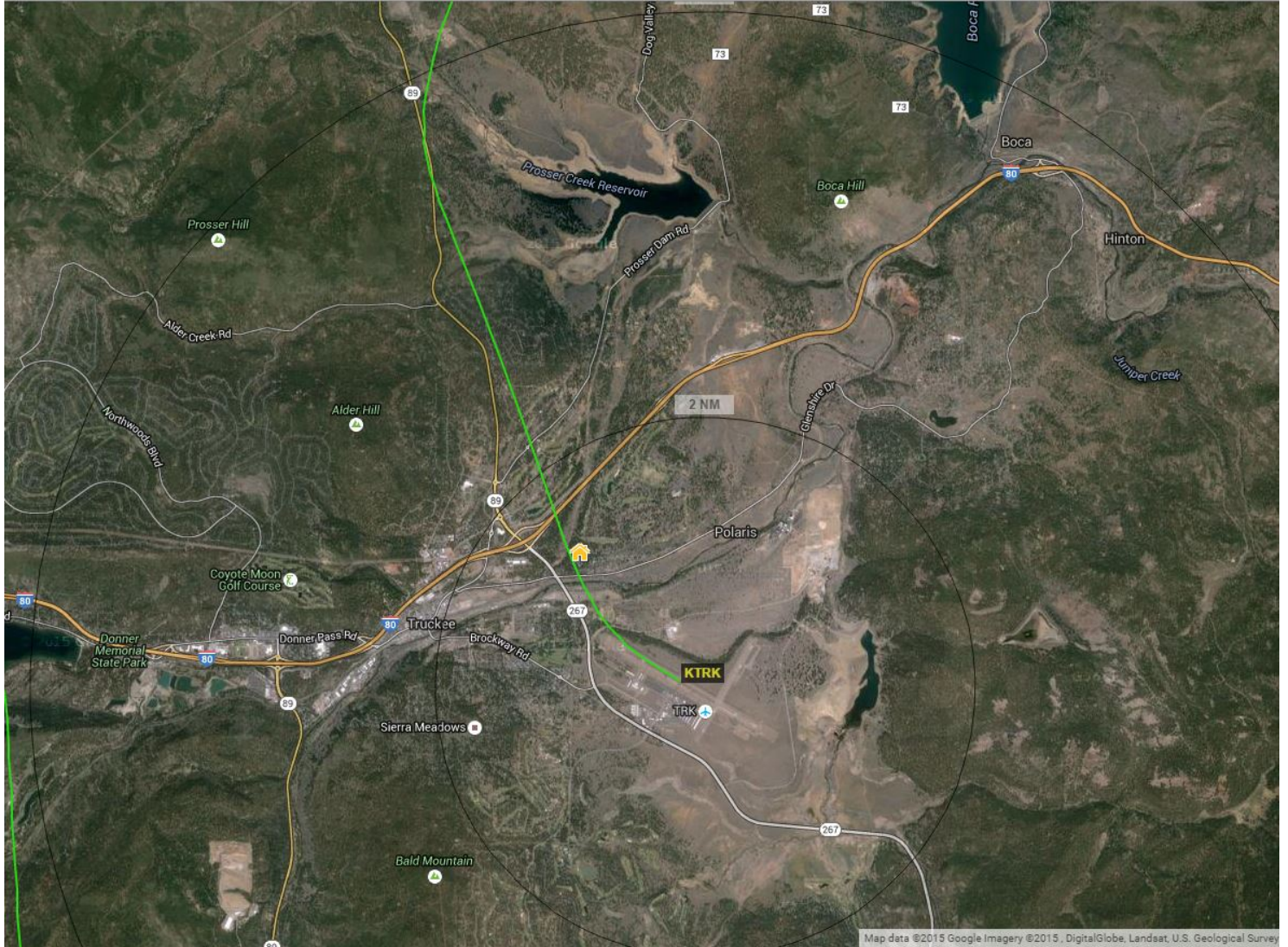
**RUNWAY:** 29

**A/C TYPE:** E55P

**DATE AND TIME:** Oct 03 2015, 03:12 PM

**POINT OF CLOSEST APPROACH(PCA):** .1 nm EST

**ALTITUDE AT PCA:** 7,400 ft



Truck Four Departure just over the west end of Olympic Heights

Staff contacted operator.

# NOISE COMPLAINT REPORT

**COMPLAINT ID:** 19875

**COMPLAINT TYPE:** Loud Disturbance

**OPERATION TYPE:** Departure

**RUNWAY:** 29

**A/C TYPE:** C210

**DATE AND TIME:** Oct 04 2015, 12:42 PM

**POINT OF CLOSEST APPROACH(PCA):** 0.01 nm

**ALTITUDE AT PCA:** 6900 ft

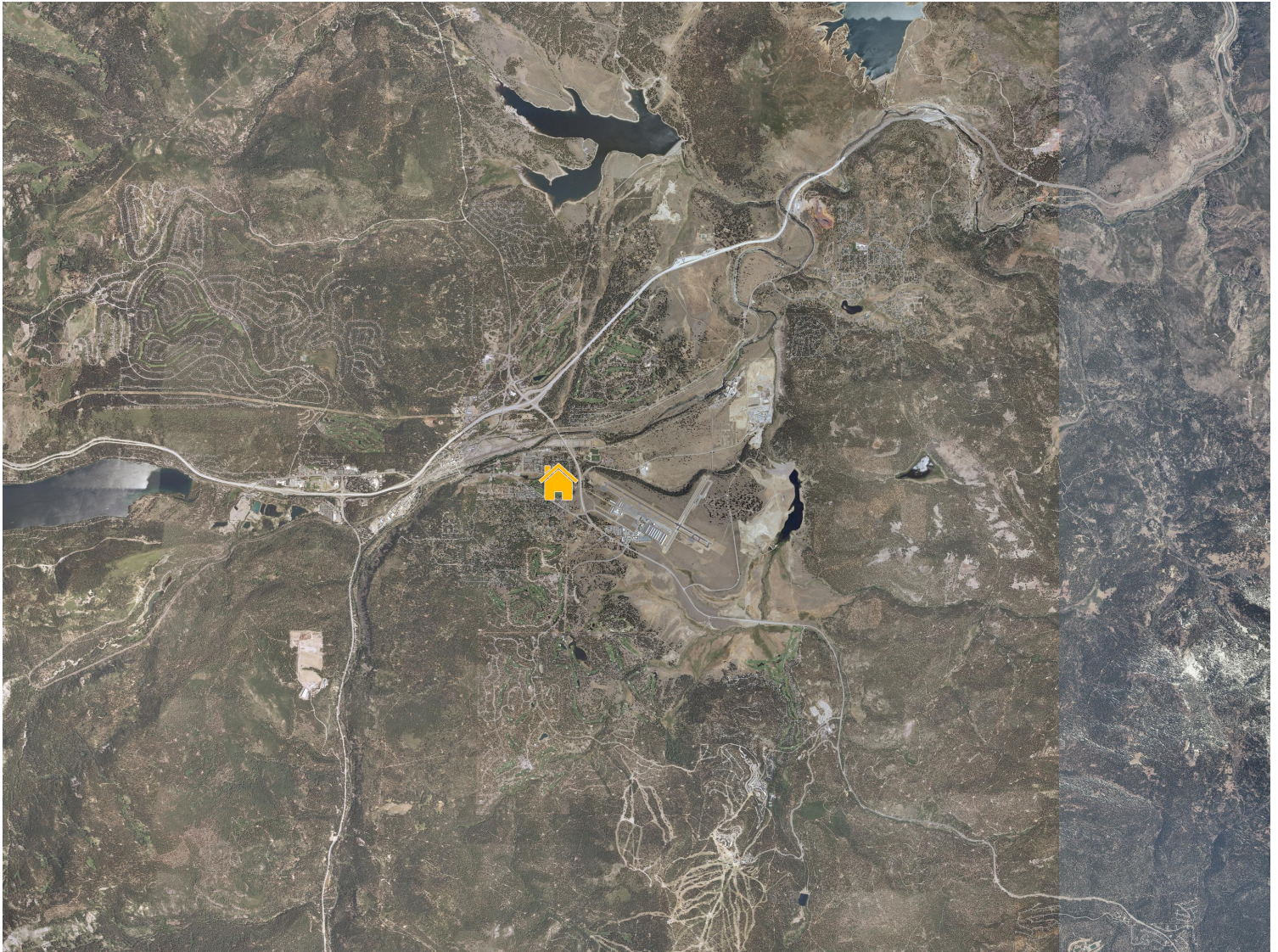


C210 made a 29 straight out departure. This would not have likely made a difference in terms of this commenter's annoyance, but staff made pilot outreach to promote the NAP's. PIC was a one-time visitor in town for a race at Squaw. Not familiar w area but was agreeable to follow NAPs if he returns. He said he was just trying to fly a path to avoid clouds and mountains.

# NOISE COMPLAINT REPORT

COMPLAINT ID: 19903  
COMPLAINT TYPE: Off Course  
OPERATION TYPE: **T & G**  
RUNWAY: **29**  
A/C TYPE: **C140**

DATE AND TIME: Oct 10 2015, 08:10 AM  
POINT OF CLOSEST APPROACH(PCA): nm  
ALTITUDE AT PCA: ft



Executing Touch and Go maneuvers. Generating annoyance to a local resident. Staff spoke to the pilot and he said he was unaware but would comply with noise abatement procedures.

\*No track could be found.

# NOISE COMPLAINT REPORT

COMPLAINT ID: 19909  
COMPLAINT TYPE: Low  
OPERATION TYPE: Arrival  
RUNWAY: 11  
A/C TYPE: PC12

DATE AND TIME: Oct 09 2015, 10:38 AM  
POINT OF CLOSEST APPROACH(PC A): 0.08 nm  
ALTITUDE AT PCA: 7200 ft



PC12 on a visual arrival to Runway 11 at approximately 800' AGL at PCA. While visual arrivals to 11 are a grey area as far as compliance, staff spoke to the pilot about this operation. Although the commenter was willing and eager to reduce impacts to neighboring communities he did state, "When you feel like you are being watched, it makes you nervous and more likely to make a mistake."

Commenter in Tahoe Donner stated the aircraft "Landing, VERY VERY low over-head"

# NOISE COMPLAINT REPORT

**COMPLAINT ID:** 19954

**COMPLAINT TYPE:** Low

**OPERATION TYPE:** Departure

**RUNWAY:** 29

**A/C TYPE:** C510

**DATE AND TIME:** Oct 10 2015, 11:24 AM

**POINT OF CLOSEST APPROACH(PCA):** .01 nm

**ALTITUDE AT PCA:** 700 ft EST

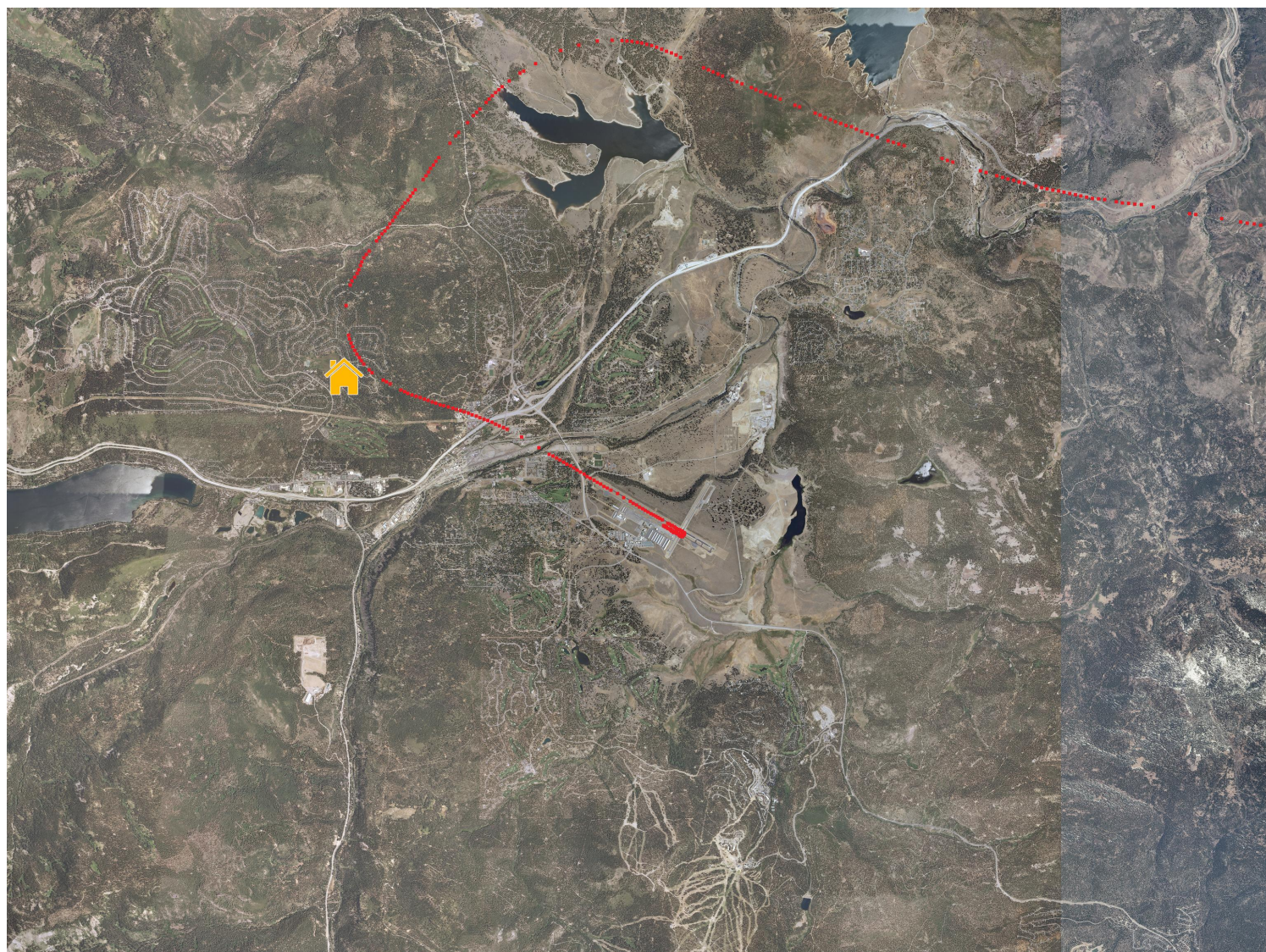


Comment: "almost knocked me off my ladder when he went by"  
C510 29 Bypass Departure with right turn out too early. Estimated PCA was 700'agl  
Staff called operator.

# NOISE COMPLAINT REPORT

COMPLAINT ID: 19958  
COMPLAINT TYPE: Low  
OPERATION TYPE: Arrival  
RUNWAY: 11  
A/C TYPE: C750

DATE AND TIME: Oct 11 2015, 08:35 AM  
POINT OF CLOSEST APPROACH(PCA): 0.22 nm  
ALTITUDE AT PCA: 6900 ft



Comment: "a twin engine private jet flew over Tahoe donner at 8:30 to 8:40 and was so low that i could see the pilot. this has got to stop How do i join the board to make a change."

Citation 10 Visual arrival to 11.



# NOISE COMPLAINT REPORT

COMPLAINT ID: 19953

COMPLAINT TYPE: Loud Disturbance

OPERATION TYPE: Arrival

RUNWAY: 11

A/C TYPE: C750

DATE AND TIME: Oct 11 2015, 08:38 AM

POINT OF CLOSEST APPROACH(PCOA): 1.59 nm

ALTITUDE AT PCOA: 0 ft



Visual Arrival 11. This generated 2 comments, 1 in Tahoe Donner and 1 in Northstar

Comment (Northstar): "Very Loud, Reverberated" house

Staff Comment: Very unusual for 11 Arrival to affect Northstar resident. The only aircraft that matches the time of comment was a C750 and the time matches exactly.

Thrust Reversers appear to have generated the comments.

Emailed operator.

# NOISE COMPLAINT REPORT

COMPLAINT ID: 19976

COMPLAINT TYPE:

OPERATION TYPE: Departure

RUNWAY: 29

A/C TYPE: PC12

DATE AND TIME: Oct 11 2015, 01:35 PM

POINT OF CLOSEST APPROACH(PCOA): 0.02 nm

ALTITUDE AT PCOA: 6400 ft



29 Departure, made a hard right over the neighborhood of Olympic Heights. Staff made Outreach to the operator via email. Comment:3 loud, low flying planes flying over Olympic Heights at 1:35 pm, 1:55 pm and 2:26 pm on Sunday, 10/11.

# NOISE COMPLAINT REPORT

**COMPLAINT ID:** 19977

**COMPLAINT TYPE:** Off Course

**OPERATION TYPE:** Departure

**RUNWAY:** 29

**A/C TYPE:** PA34

**DATE AND TIME:** Oct 11 2015, 01:55 PM

**POINT OF CLOSEST APPROACH(PCA):** 0.1 nm

**ALTITUDE AT PCA:** 6800 ft



Piper Seneca PA34 departing 29 and overflow Olympic Heights. Staff made outreach.

# NOISE COMPLAINT REPORT

**COMPLAINT ID:** 19959

**COMPLAINT TYPE:** Off Course

**OPERATION TYPE:** Departure

**RUNWAY:** 29

**A/C TYPE:** AEST

**DATE AND TIME:** Oct 11 2015, 14:26 PM

**POINT OF CLOSEST APPROACH(PCA):** 0.1 nm

**ALTITUDE AT PCA:** 6800 ft



Aerostar Bypass Departure too far east. Mailed letter.

# NOISE COMPLAINT REPORT

**COMPLAINT ID:** 19975

**COMPLAINT TYPE:** Off Course

**OPERATION TYPE:** Departure

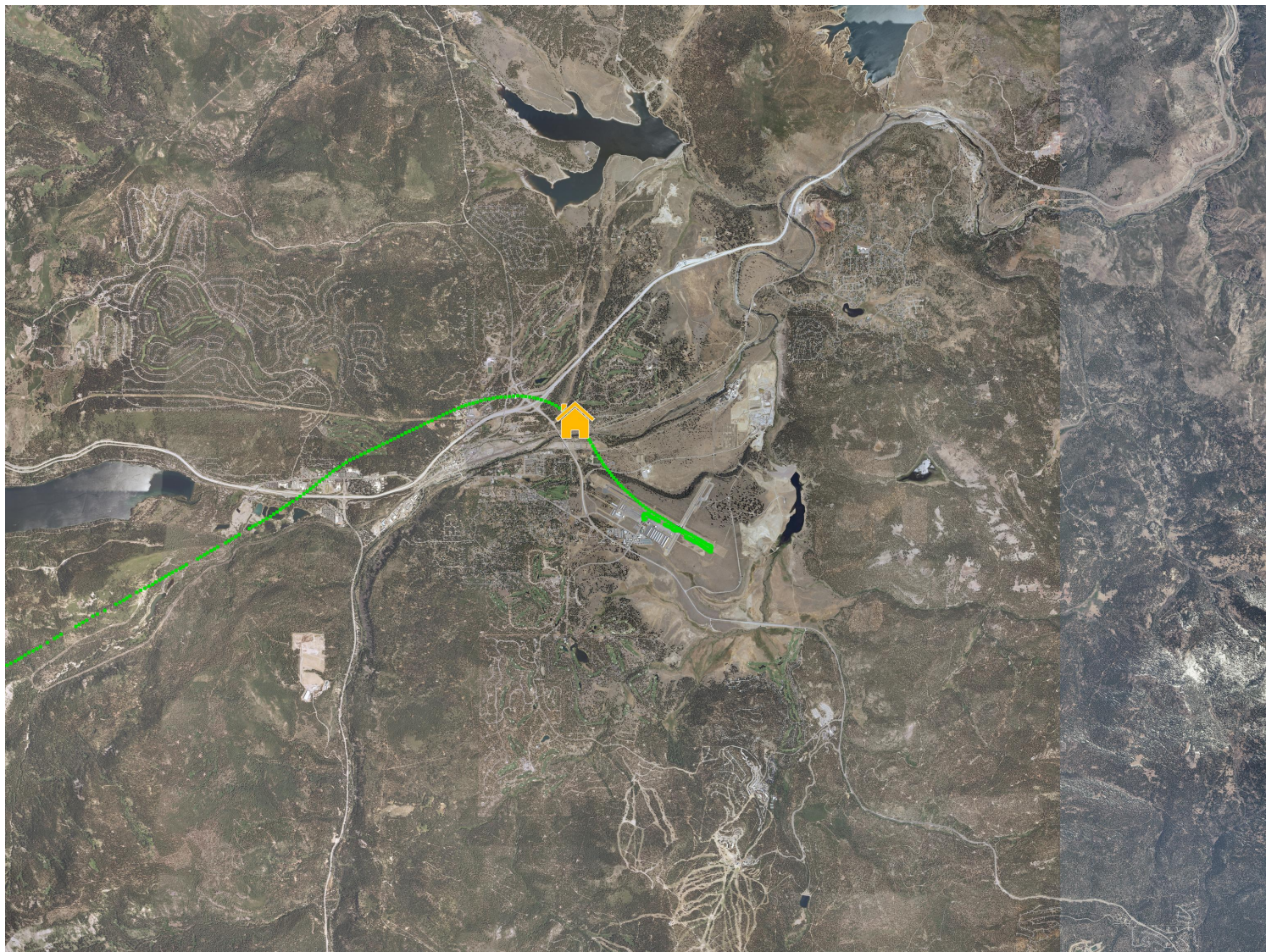
**RUNWAY:** 29

**A/C TYPE:** PC12

**DATE AND TIME:** Oct 13 2015, 11:11 AM

**POINT OF CLOSEST APPROACH(PCA):** 0.02 nm

**ALTITUDE AT PCA:** 6900 ft



Pilatus PC12 Departed Runway 29 with an attempted Bypass Departure. Aircraft overflew the western end of Olympic Heights and staff made outreach to the operator.

# NOISE COMPLAINT REPORT

COMPLAINT ID: 20026

COMPLAINT TYPE: Low

OPERATION TYPE: Departure

RUNWAY: 29

A/C TYPE: PC12

DATE AND TIME: Oct 17 2015, 03:07 PM

POINT OF CLOSEST APPROACH(PCA): 0.06 nm

ALTITUDE AT PCA: 6700 ft



PC12 departure from Runway 29 on Truck Four. No outreach, IMC

# NOISE COMPLAINT REPORT

COMPLAINT ID: 20114

COMPLAINT TYPE: Off Course

OPERATION TYPE: Departure

RUNWAY: 29

A/C TYPE: PC12

DATE AND TIME: Oct 17 2015, 05:05 PM

POINT OF CLOSEST APPROACH(PCOA): 0.01 nm

ALTITUDE AT PCOA: 6800 ft



Pilatus PC12 Departure from 29.

IMC all day light with rain to rain with mist all day. Truck Four departure. Not VMC, no outreach.

# NOISE COMPLAINT REPORT

COMPLAINT ID: 20057

COMPLAINT TYPE: Loud Disturbance

OPERATION TYPE: Departure

RUNWAY: 29

A/C TYPE: AS50

DATE AND TIME: Oct 26 2015, 07:44 AM

POINT OF CLOSEST APPROACH(PCA): 0.6 nm

ALTITUDE AT PCA: 6900 ft



Medical transport Helicopter departed Runway 29, approximately 1100' AGL at PCA.

Comment: Very loud propeller plane flying low over the middle of a residential neighborhood in Truckee, CA early in the morning.



# NOISE COMPLAINT REPORT

COMPLAINT ID: 20194

COMPLAINT TYPE: Loud Disturbance

OPERATION TYPE: **Departure**

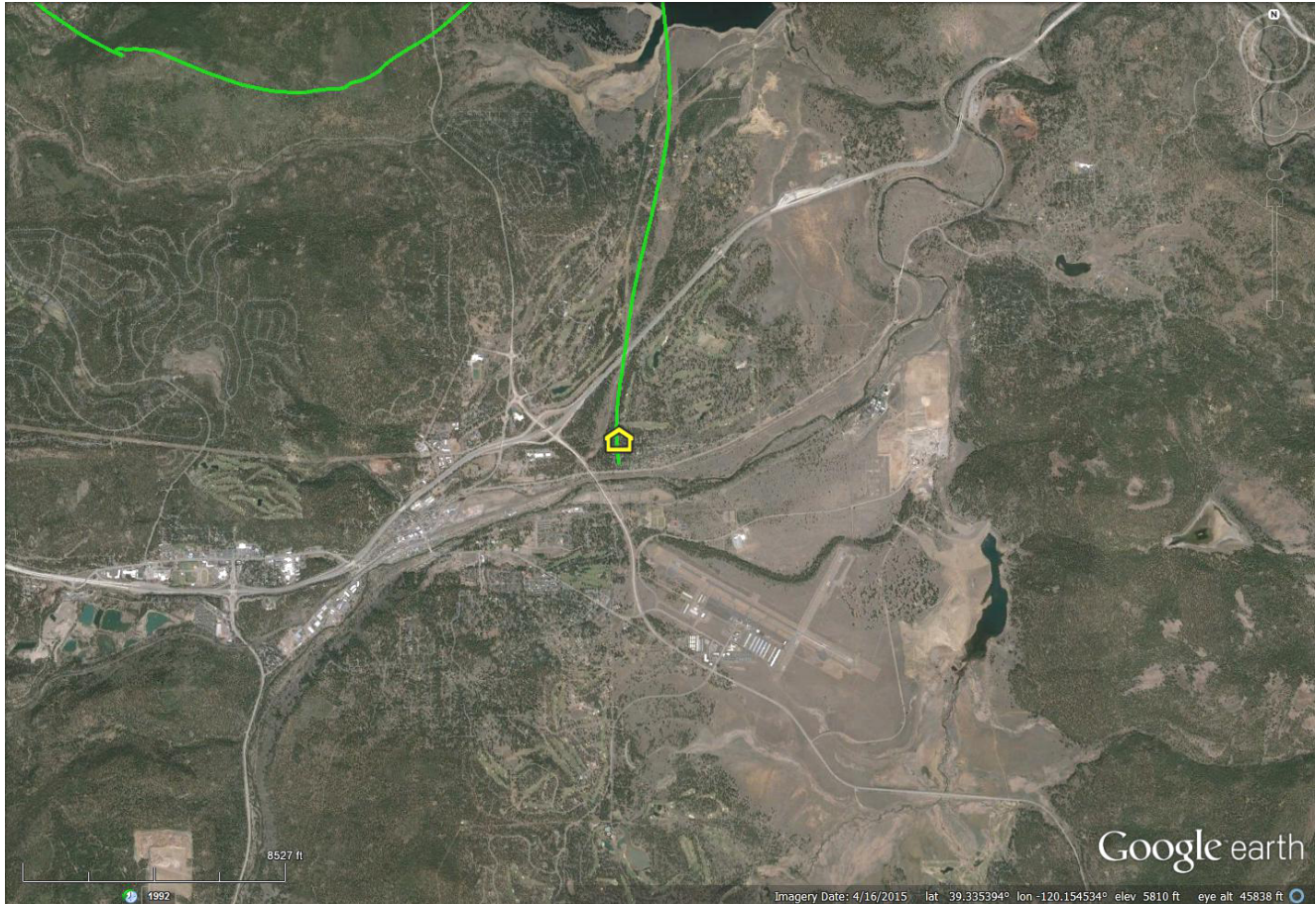
RUNWAY: **29**

A/C TYPE: **BE9L**

DATE AND TIME: Nov 07 2015, 11:20 AM

POINT OF CLOSEST APPROACH(PCA): 0 nm

ALTITUDE AT PCA: 6,800 ft



King Air 90 Truck Four Departure a touch east of the Bypass bridge. Emailed operator.

# NOISE COMPLAINT REPORT

COMPLAINT ID: 20196  
COMPLAINT TYPE: Frequent  
OPERATION TYPE: Arrival  
RUNWAY: 29  
A/C TYPE: MSQ2

DATE AND TIME: Nov 11 2015, 10:15 AM  
POINT OF CLOSEST APPROACH(PCA): 0.08 nm  
ALTITUDE AT PCA: 6700 ft



Cub doing touch and go work on 29. Spoke to pilot.

# NOISE COMPLAINT REPORT

COMPLAINT ID: 20221

COMPLAINT TYPE: Loud Disturbance

OPERATION TYPE: **Departure**

RUNWAY: **29**

A/C TYPE: **BE9T**

DATE AND TIME: Dec 09 2015, 01:04 PM

POINT OF CLOSEST APPROACH(PCA): nm

ALTITUDE AT PCA: 6700 ft



KingAir 90 Departed 29 in MVFR and flew the Truck Four departure. Staff made outreach to the operator.

# NOISE COMPLAINT REPORT

COMPLAINT ID: 20262

COMPLAINT TYPE: Off Course

OPERATION TYPE: Departure

RUNWAY: 29

A/C TYPE: PC12

DATE AND TIME: Dec 23 2015, 04:01 PM

POINT OF CLOSEST APPROACH(PCA): 0.03 nm

ALTITUDE AT PCA: 6700 ft



PC12 Departure - attempted bypass and overflew Olympic Heights west side. Emailed operator.

# NOISE COMPLAINT REPORT

COMPLAINT ID: 20261  
COMPLAINT TYPE: Off Course  
OPERATION TYPE: Arrival  
RUNWAY: 29  
A/C TYPE: C210

DATE AND TIME: Dec 23 2015, 01:40 PM  
POINT OF CLOSEST APPROACH(PCA): 0.03 nm  
ALTITUDE AT PCA: 6700 ft



Cessna 210 doing pattern work. Staff spoke to PIC and gave him NAPs

# NOISE COMPLAINT REPORT

COMPLAINT ID: 20284

COMPLAINT TYPE: Frequent

OPERATION TYPE: Departures

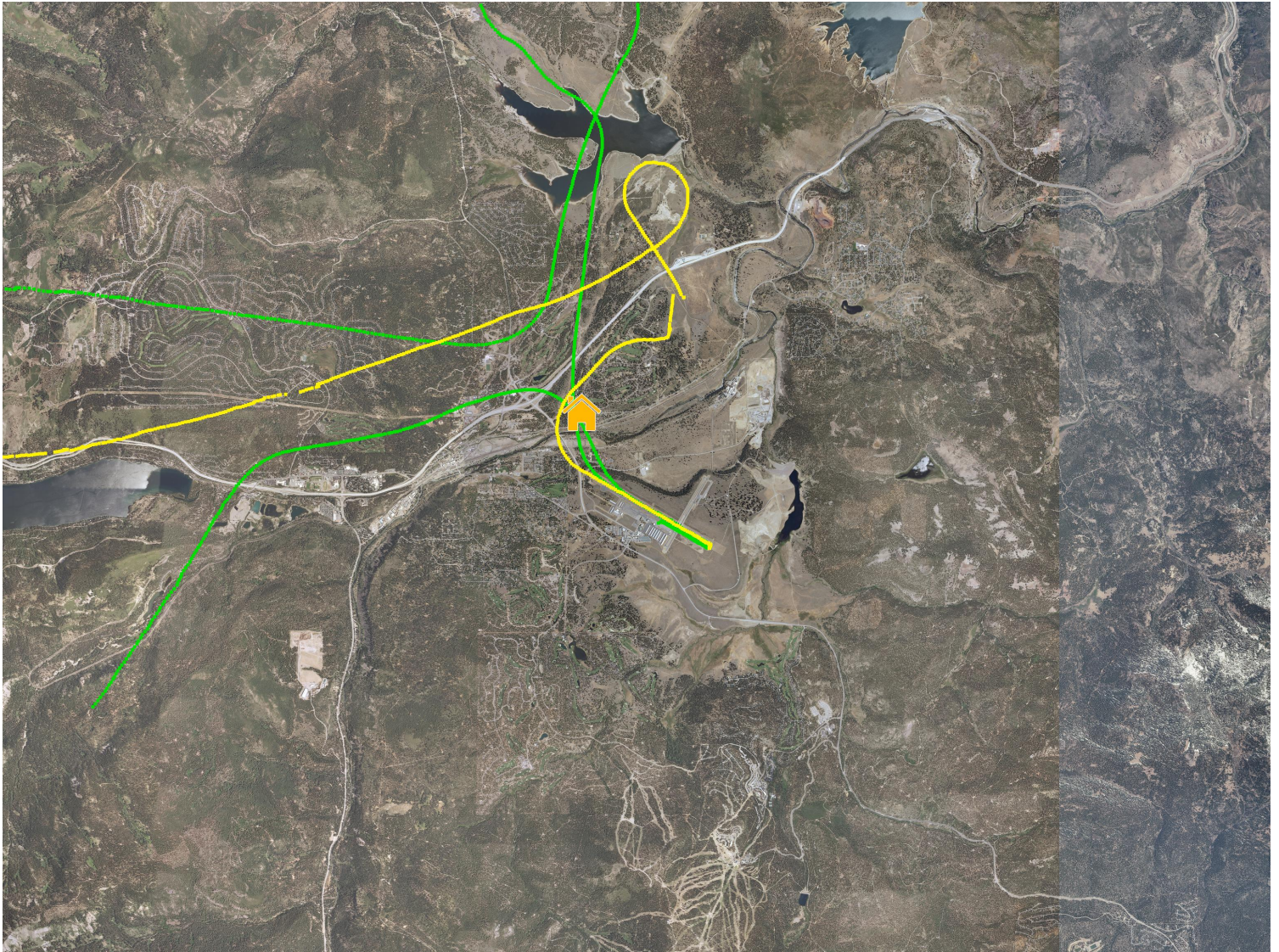
RUNWAY: 29

A/C TYPE: BE36

DATE AND TIME: Dec 31 2015, 11:40 AM

POINT OF CLOSEST APPROACH(PCA): 0.22 nm

ALTITUDE AT PCA: 6400 ft



Frequency of operations on New Year's Eve a problem. 2 tracks identified as non-compliant. Outreach to both pilots was made.