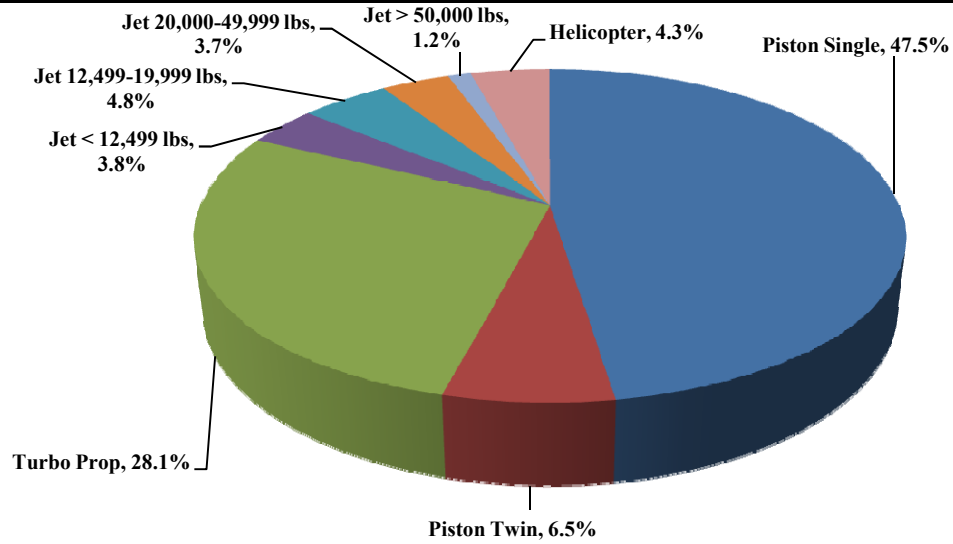




TRUCKEE TAHOE AIRPORT DISTRICT Operations and Community Comment Report as of 3/31/16

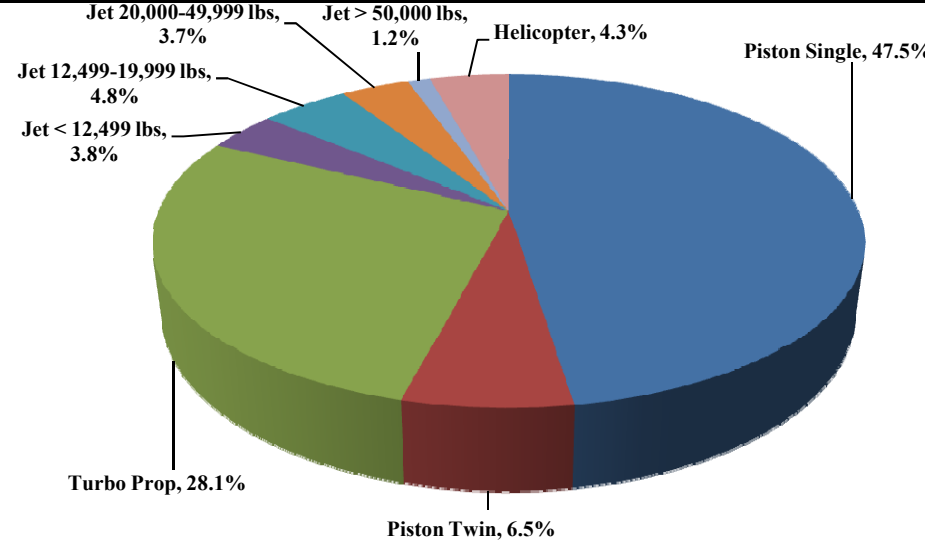


Current Quarter | Operations
January 1, 2016 - March 31, 2016



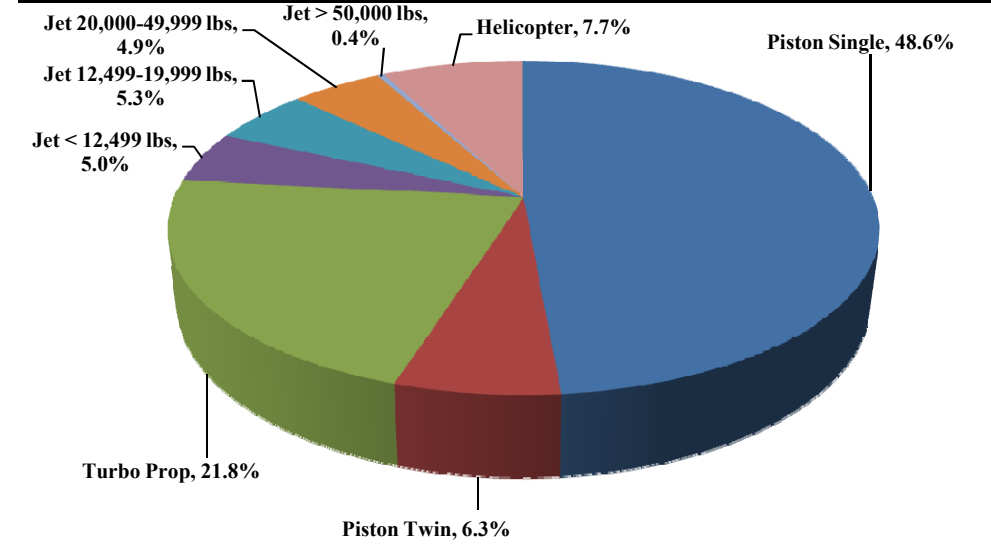
Total Powered Aircraft 4,913

Year-to-Date | Operations
January 1, 2016 - March 31, 2016



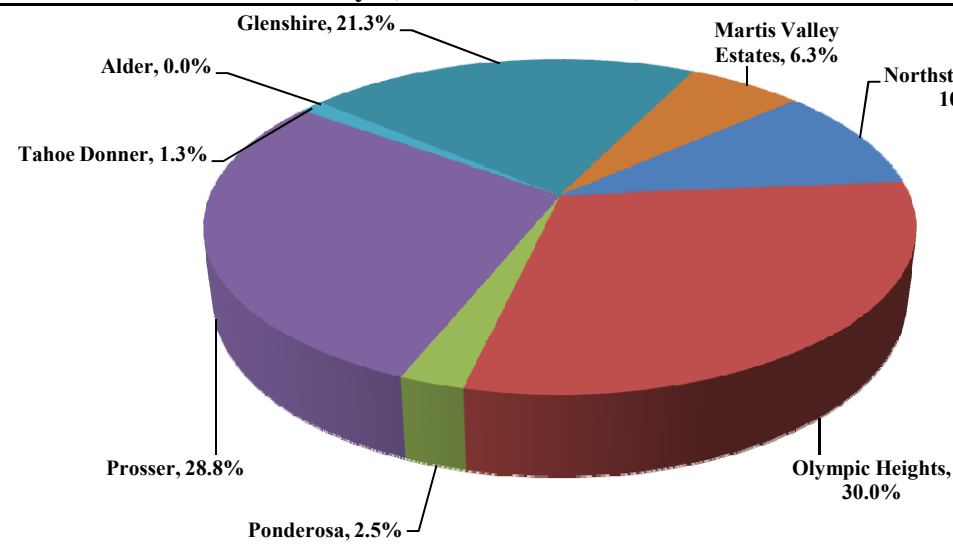
Total Powered Aircraft 4,913

Historic | Operations
January 1, 2012 - March 31, 2016



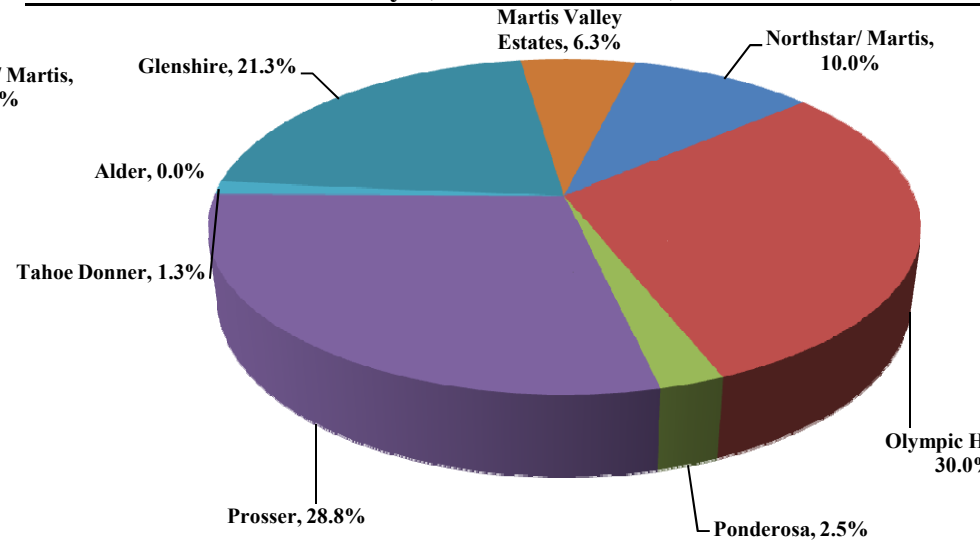
Total Powered Aircraft 77,885

Current Quarter | Comments
January 1, 2016 - March 31, 2016



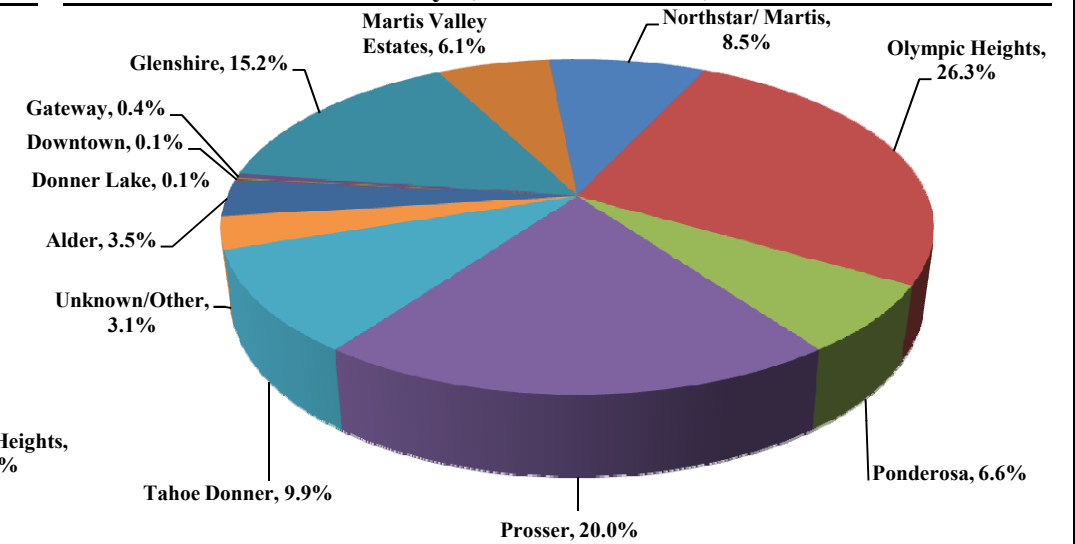
Total Comments 80
Operations / Comment 61

Year-to-Date | Comments
January 1, 2016 - March 31, 2016



Total Comments 80
Operations / Comment 61

Historic | Comments
January 1, 2012 - March 31, 2016



Total Comments 995
Operations / Comment 99

Notes

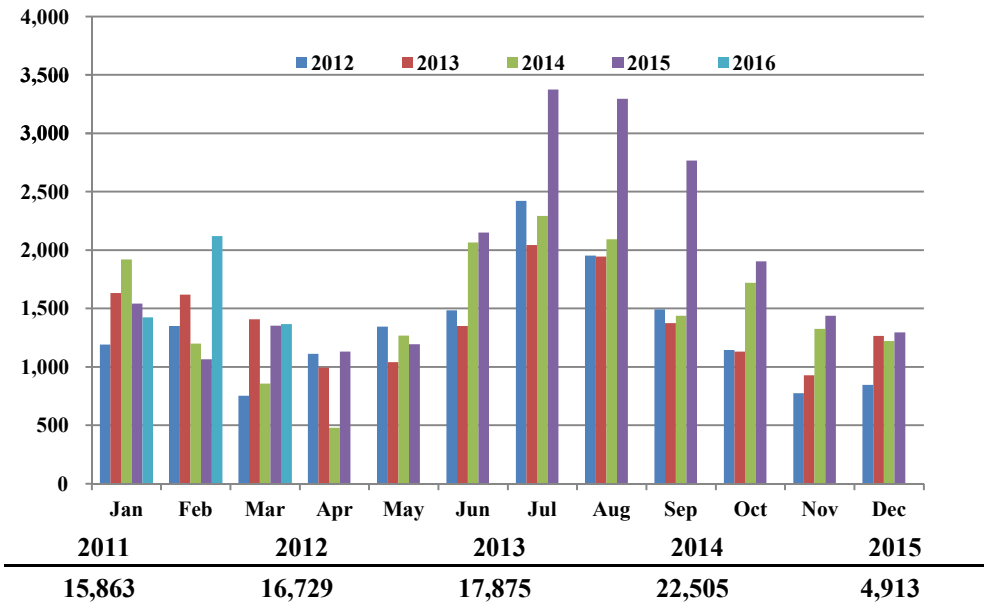
April 2014 - Launched new TTAD Website with 'Report Noise' link.
Operations graphs above use Total Powered Aircraft. Glider operations are not included.
Jets > 50,000lbs subcategory was added in Q1 2015. Reporting and analysis prior to 2015 is not included.



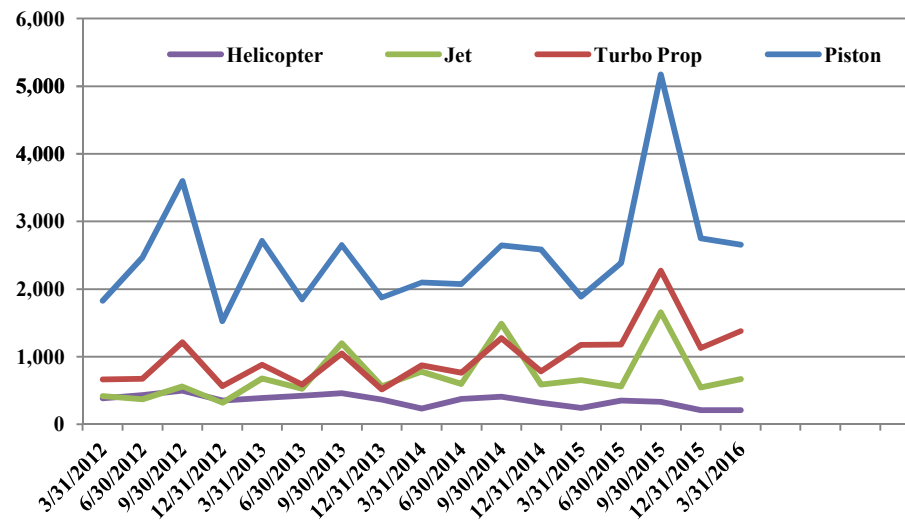
TRUCKEE TAHOE AIRPORT DISTRICT Operations and Community Comment Report as of 3/31/16



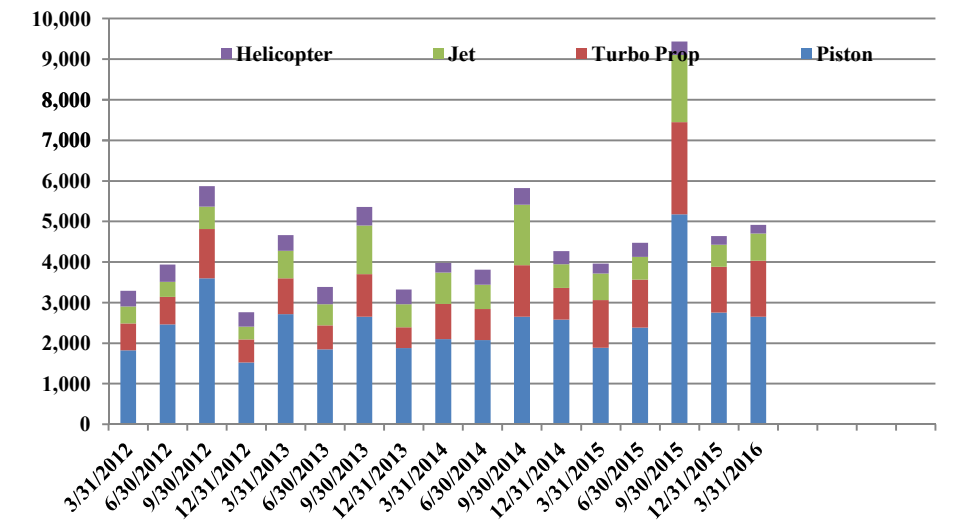
Operations | by Month by Year
January 1, 2012 -March 31, 2016



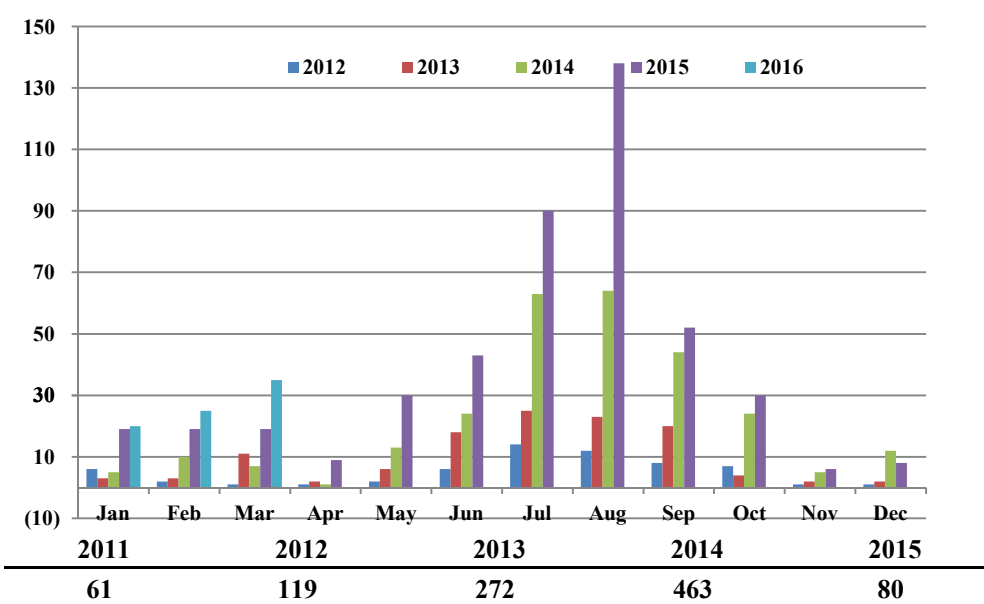
Operations | by Type by Quarter
January 1, 2012 -March 31, 2016



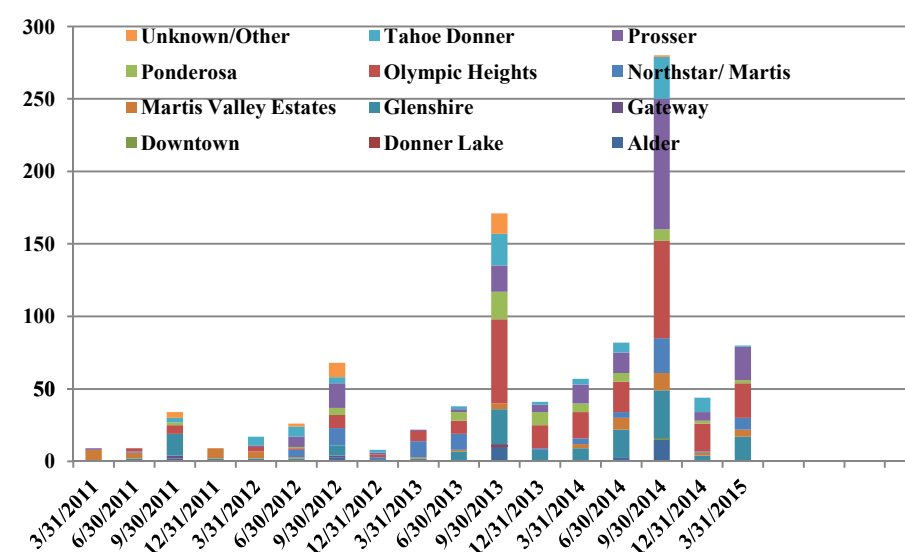
Operations | Mix by Type by Quarter
January 1, 2012 -March 31, 2016



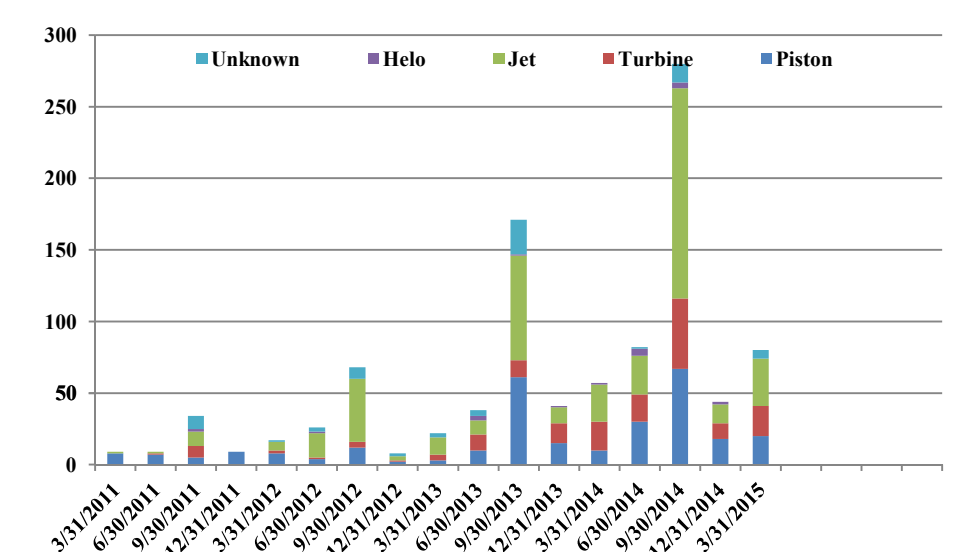
Comments | by Month by Year
January 1, 2012 -March 31, 2016



Comments | by Locale by Quarter
January 1, 2012 -March 31, 2016



Comments | by Type by Quarter
January 1, 2012 -March 31, 2016



Notes

April 2014 - Launched new TTAD Website with 'Report Noise' link.
Operations graphs above use Total Powered Aircraft. Glider operations are not included.
Jets > 50,000lbs subcategory was added in Q1 2015. Reporting and analysis prior to 2015 is not included.



Truckee Tahoe Airport District Operations and Community Comment Report as of 3/31/16



| | OPERATIONS | | | | | | | | | | Year over Year | | | | Notes |
|--------------------------|--------------|--------------|--------------|--------------|--------------|--------------|--------------|--------------|------------|---------------|----------------|----------------|--------------|---------------|-------|
| | 2015 | | | | 2016 | | | | difference | % | 4/1/14-3/31/15 | 4/1/15-3/31/16 | difference | % | |
| | Jan | Feb | Mar | Q4 | Jan | Feb | Mar | Q4 | | | | | | | |
| Operations Detail | | | | | | | | | | | | | | | |
| Piston Single | 618 | 386 | 557 | 1,561 | 561 | 1,103 | 671 | 2,335 | 774 | 49.58% | 8,050 | 11,450 | 3,400 | 42.24% | |
| Piston Twin | 123 | 86 | 117 | 326 | 94 | 142 | 84 | 320 | (6) | (1.84%) | 1,144 | 1,518 | 374 | 32.69% | |
| Turbo Prop | 424 | 348 | 402 | 1,174 | 501 | 491 | 388 | 1,380 | 206 | 17.55% | 3,993 | 5,962 | 1,969 | 49.31% | |
| Jet < 12,499 lbs | 101 | 47 | 67 | 215 | 58 | 72 | 58 | 188 | (27) | (12.56%) | 1,127 | 897 | (230) | (20.41%) | |
| Jet 12,499-19,999 lbs | 94 | 69 | 64 | 227 | 68 | 111 | 57 | 236 | 9 | 3.96% | 1,062 | 1,299 | 237 | 22.32% | |
| Jet 20,000-49,999 lbs | 65 | 38 | 41 | 144 | 57 | 75 | 50 | 182 | 38 | 26.39% | 1,069 | 1,008 | (61) | (5.71%) | |
| Jet > 50,000 lbs | 30 | 18 | 19 | 67 | 23 | 26 | 12 | 61 | (6) | (8.96%) | 67 | 221 | 154 | 229.85% | |
| Helicopter | 86 | 73 | 85 | 244 | 63 | 101 | 47 | 211 | (33) | (13.52%) | 1,345 | 1,105 | (240) | (17.84%) | |
| Total Powered Aircraft | 1,541 | 1,065 | 1,352 | 3,958 | 1,425 | 2,121 | 1,367 | 4,913 | 955 | 24.13% | 17,857 | 23,460 | 5,603 | 31.38% | |
| Gliders | - | - | - | - | - | - | - | - | - | 0.00% | 4,889 | 5,108 | 219 | 4.48% | |
| Total Operations | 1,541 | 1,065 | 1,352 | 3,958 | 1,425 | 2,121 | 1,367 | 4,913 | 955 | 24.13% | 22,746 | 28,568 | 5,822 | 25.60% | |

| | COMMENTS | | | | | | | | | | Year over Year | | | | Notes |
|-------------------------------|-----------|-----------|-----------|-----------|-----------|-----------|-----------|-----------|------------|---------------|----------------|----------------|------------|---------------|-------|
| | 2015 | | | | 2016 | | | | difference | % | 4/1/14-3/31/15 | 4/1/15-3/31/16 | difference | % | |
| | Jan | Feb | Mar | Q4 | Jan | Feb | Mar | Q4 | | | | | | | |
| Comment Location | | | | | | | | | | | | | | | |
| Alder | - | - | - | - | - | - | - | - | - | 0.00% | 10 | 18 | 8 | 80.00% | |
| Donner Lake | - | - | - | - | - | - | - | - | - | 0.00% | 1 | - | (1) | (100.00%) | |
| Downtown | - | - | - | - | - | - | - | - | - | 0.00% | - | 1 | 1 | 100.00% | |
| Gateway | - | - | - | - | - | - | - | - | - | 0.00% | 1 | - | (1) | (100.00%) | |
| Glenshire | 1 | 5 | 3 | 9 | 3 | 2 | 12 | 17 | 8 | 88.89% | 48 | 73 | 25 | 52.08% | |
| Martis Valley Estates | 2 | 1 | - | 3 | - | 1 | 4 | 5 | 2 | 66.67% | 8 | 27 | 19 | 237.50% | |
| Northstar/ Martis | - | 3 | 1 | 4 | 4 | 3 | 1 | 8 | 4 | 100.00% | 16 | 37 | 21 | 131.25% | |
| Olympic Heights | 8 | 3 | 7 | 18 | 11 | 6 | 7 | 24 | 6 | 33.33% | 101 | 131 | 30 | 29.70% | |
| Ponderosa | 4 | 2 | - | 6 | - | 1 | 1 | 2 | (4) | (66.67%) | 40 | 18 | (22) | (55.00%) | |
| Prosser | 3 | 4 | 6 | 13 | 2 | 12 | 9 | 23 | 10 | 76.92% | 38 | 133 | 95 | 250.00% | |
| Tahoe Donner | 1 | 1 | 2 | 4 | - | - | 1 | 1 | (3) | (75.00%) | 30 | 47 | 17 | 56.67% | |
| Unknown/Other | - | - | - | - | - | - | - | - | - | 0.00% | 14 | 1 | (13) | (92.86%) | |
| Total Comments | 19 | 19 | 19 | 57 | 20 | 25 | 35 | 80 | 23 | 40.35% | 307 | 486 | 179 | 58.31% | |
| Comment Type | | | | | | | | | | | | | | | |
| Piston | 7 | 2 | 1 | 10 | 6 | 6 | 8 | 20 | 10 | 100.00% | 96 | 135 | 39 | 40.63% | |
| Turbine | 5 | 6 | 9 | 20 | 8 | 4 | 9 | 21 | 1 | 5.00% | 57 | 100 | 43 | 75.44% | |
| Jet | 6 | 11 | 9 | 26 | 6 | 13 | 14 | 33 | 7 | 26.92% | 120 | 220 | 100 | 83.33% | |
| Helo | 1 | - | - | 1 | - | - | - | - | (1) | (100.00%) | 6 | 11 | 5 | 83.33% | |
| Unknown | - | - | - | - | - | 2 | 4 | 6 | 6 | 100.00% | 28 | 20 | (8) | (28.57%) | |
| Total Comments | 19 | 19 | 19 | 57 | 20 | 25 | 35 | 80 | 23 | 40.35% | 307 | 486 | 179 | 58.31% | |
| Operations per Comment | | | | | | | | | | | | | | | |
| | | | | 69 | | | | 61 | (8) | (11.56%) | 74 | 59 | (15) | (20.66%) | |