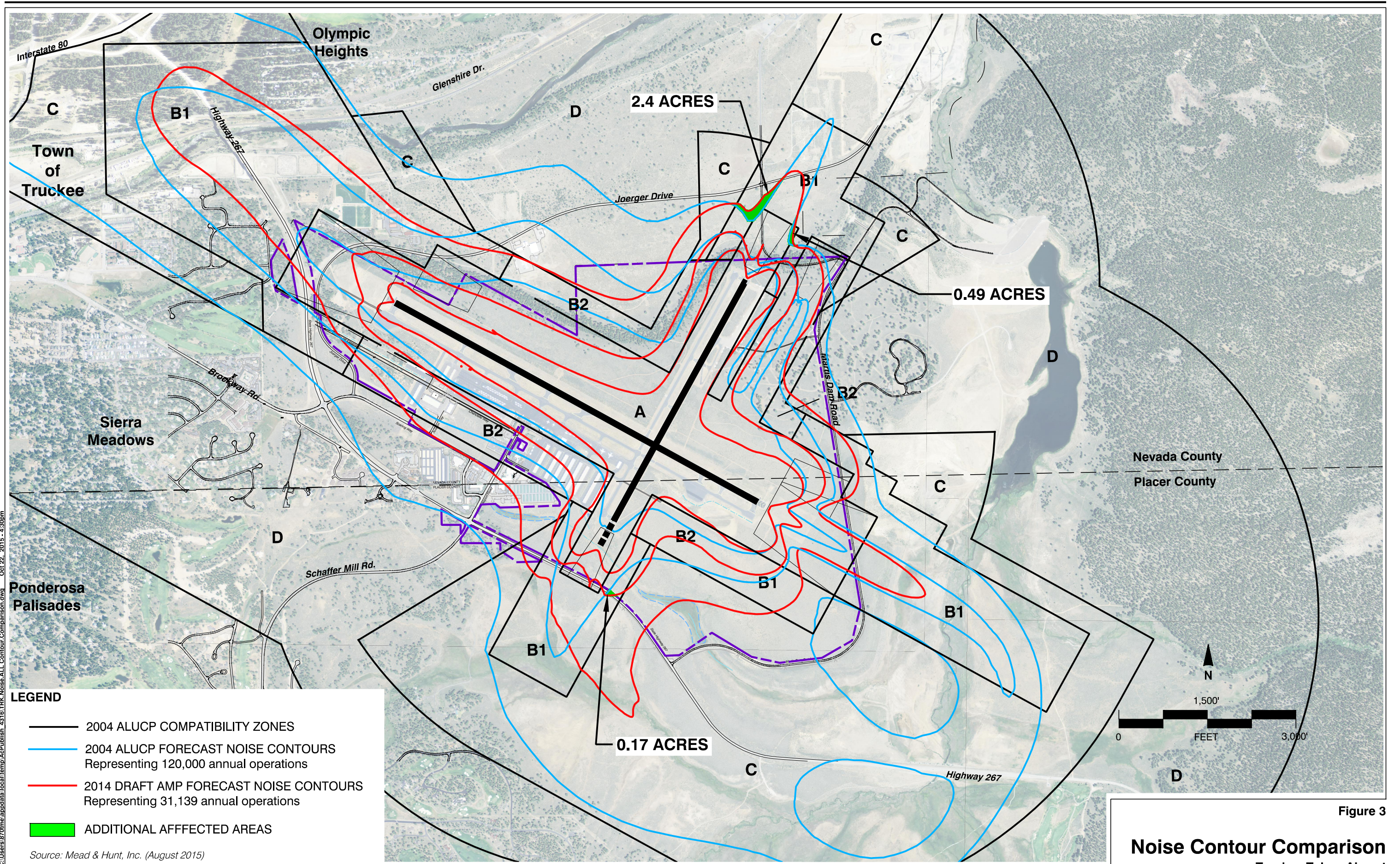


Figure 2

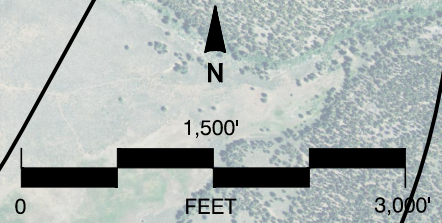
**Project Elements**  
Truckee Tahoe Airport



C:\Users\670me\appdata\local\temp\AsPublish\_4318\TRK\_Noise.ALL.Contour.Comparison.dwg Oct 22, 2015 - 4:30pm

**LEGEND**

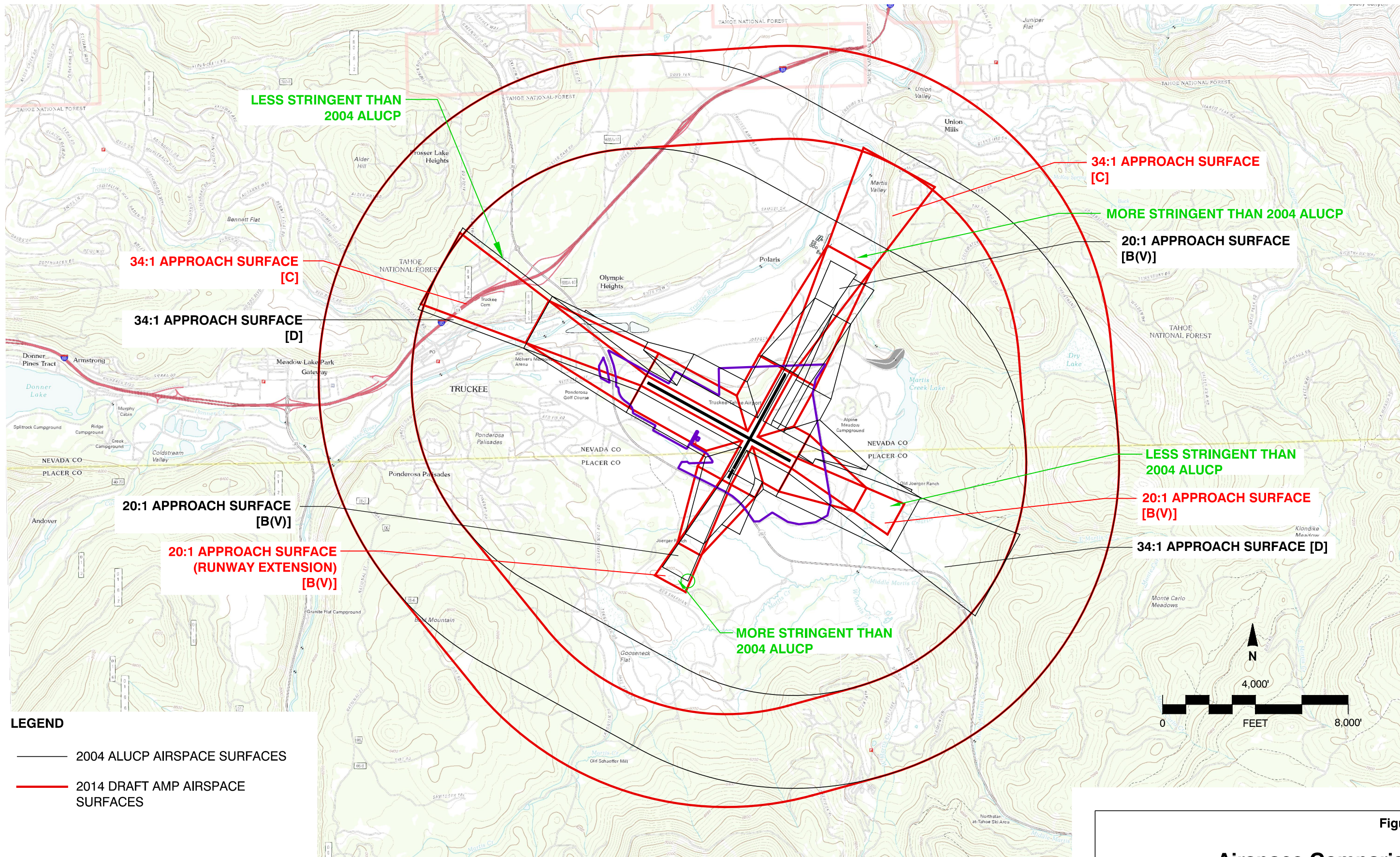
- 2004 ALUCP COMPATIBILITY ZONES
- 2004 ALUCP FORECAST NOISE CONTOURS  
Representing 120,000 annual operations
- 2014 DRAFT AMP FORECAST NOISE CONTOURS  
Representing 31,139 annual operations
- ADDITIONAL AFFECTED AREAS



Source: Mead & Hunt, Inc. (August 2015)

**Figure 3**  
**Noise Contour Comparison**  
 Truckee Tahoe Airport

X:\20137001\411668.01\TECH\CAD\Drawings\TRK\_AirspaceComparison.dwg Oct 23, 2015 - 6:33am



**LEGEND**

— 2004 ALUCP AIRSPACE SURFACES

— 2014 DRAFT AMP AIRSPACE SURFACES

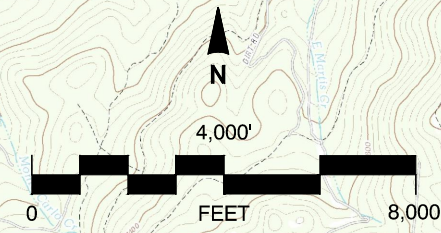
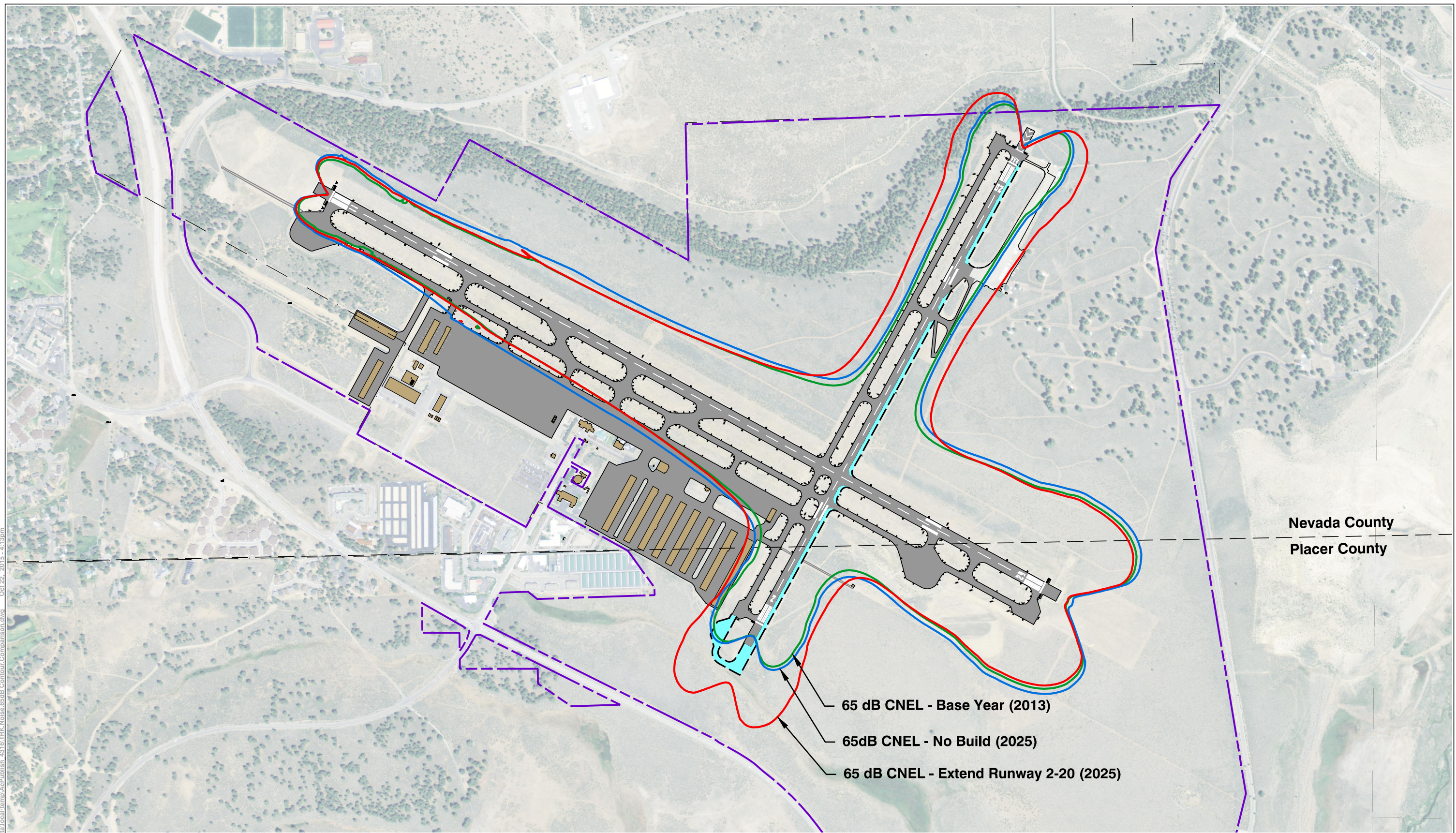


Figure 4

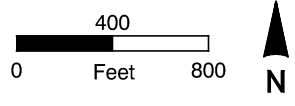
**Airspace Comparison**  
Truckee Tahoe Airport

Source: Mead & Hunt, Inc. (October 2015)



Nevada County  
Placer County

65 dB CNEL - Base Year (2013)  
65dB CNEL - No Build (2025)  
65 dB CNEL - Extend Runway 2-20 (2025)



**LEGEND**

- Airfield Property
- Truckee Town Limits
- County Line
- Runway Extension

- 65 dB CNEL - Base Year (2013; 26,470 annual ops.)
- 65dB CNEL - No Build (2025; 31,139 annual ops.)
- 65 dB CNEL - Extend Runway 2-20 (2025; 31,139 annual ops.)

**Figure 5**  
**65 dB CNEL Noise Comparison**  
Truckee Tahoe Airport

C:\Users\670me\AppData\Local\Temp\AsPublish\_4316\TRK\_Noise\_65dB\_Contour\_Comparison.dwg Oct 22, 2015 - 4:13pm