

# NOISE COMPLAINT REPORT

COMPLAINT ID: 50510

COMPLAINT TYPE: Frequent

OPERATION TYPE: Touch n Go

RUNWAY: 29

A/C TYPE: C172

DATE AND TIME: Jul 01 2016, 10:28 AM

POINT OF CLOSEST APPROACH(PCOA): 0.16 nm

ALTITUDE AT PCOA: 6600 ft

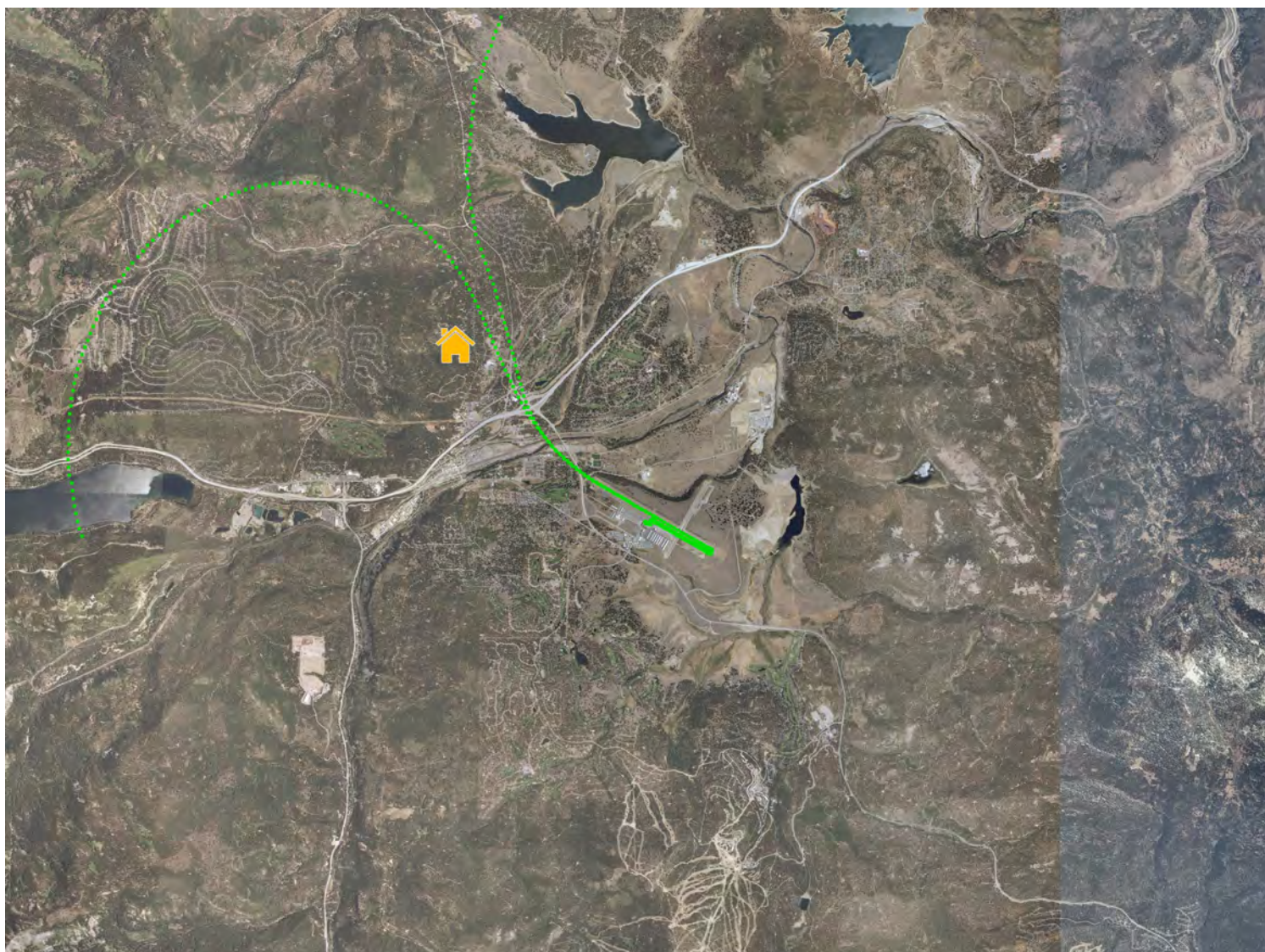


C172 patternwork/student training. Largely over 267 but a couple of upwind legs drifted over the west end of Olympic Heights. Spoke to CFI, Student, and Commenter. Commenter seemed as much concerned with the number of operations as with the proximity to residence. Staff will continue to work with CFIs on mixing up runways, use of 02, breaking for maneuver training, etc.

# NOISE COMPLAINT REPORT

COMPLAINT ID: 51252  
COMPLAINT TYPE: Low & Loud  
OPERATION TYPE: Departure  
RUNWAY: 29  
A/C TYPE: C525

DATE AND TIME: Jul 01 2016, 04:30 PM  
POINT OF CLOSEST APPROACH(PCA): 0.6 nm  
ALTITUDE AT PCA: 7900 ft



Comment: "The last 2 jets, leaving at 4:30 and 4:31 were low, and loud and slow. The first was white with a red tail and flew directly overhead. The second was a little less overhead but still close and loud."

Staff input: 2 jet departures along the 89 N corridor: a Citation 525 and a Challenger 300. Tracks indicate both aircraft were about .5 miles or more east of the commenter location in Prosser Heights and at 7,900' & 8,200' msl (1625 - 1925' agl).

Citation flew the Truck Four SID and the Challenger made a VFR departure with a climbing left 360 and departure south. Emailed the Challenger NAP info with request to use a SID or follow I-80, although it is not likely a Truck Four departure would have changed the comment.

# NOISE COMPLAINT REPORT

COMPLAINT ID: 50521  
COMPLAINT TYPE: Low And Loud  
OPERATION TYPE: Arrival  
RUNWAY: 20  
A/C TYPE: C525

DATE AND TIME: Jul 01 2016, 04:56 PM  
POINT OF CLOSEST APPROACH(PCA): 0.09 nm  
ALTITUDE AT PCA: 6400 ft



Citation 525 made VFR arrival to Runway 20 in WSW winds gusting to mid 20's. The arrival generated 3 comments from Glenshire. Staff spoke to regular operator and asked PIC to offset ten degrees or so west when possible.

# NOISE COMPLAINT REPORT

COMPLAINT ID: 50523

COMPLAINT TYPE: Low And Loud

OPERATION TYPE: Departure

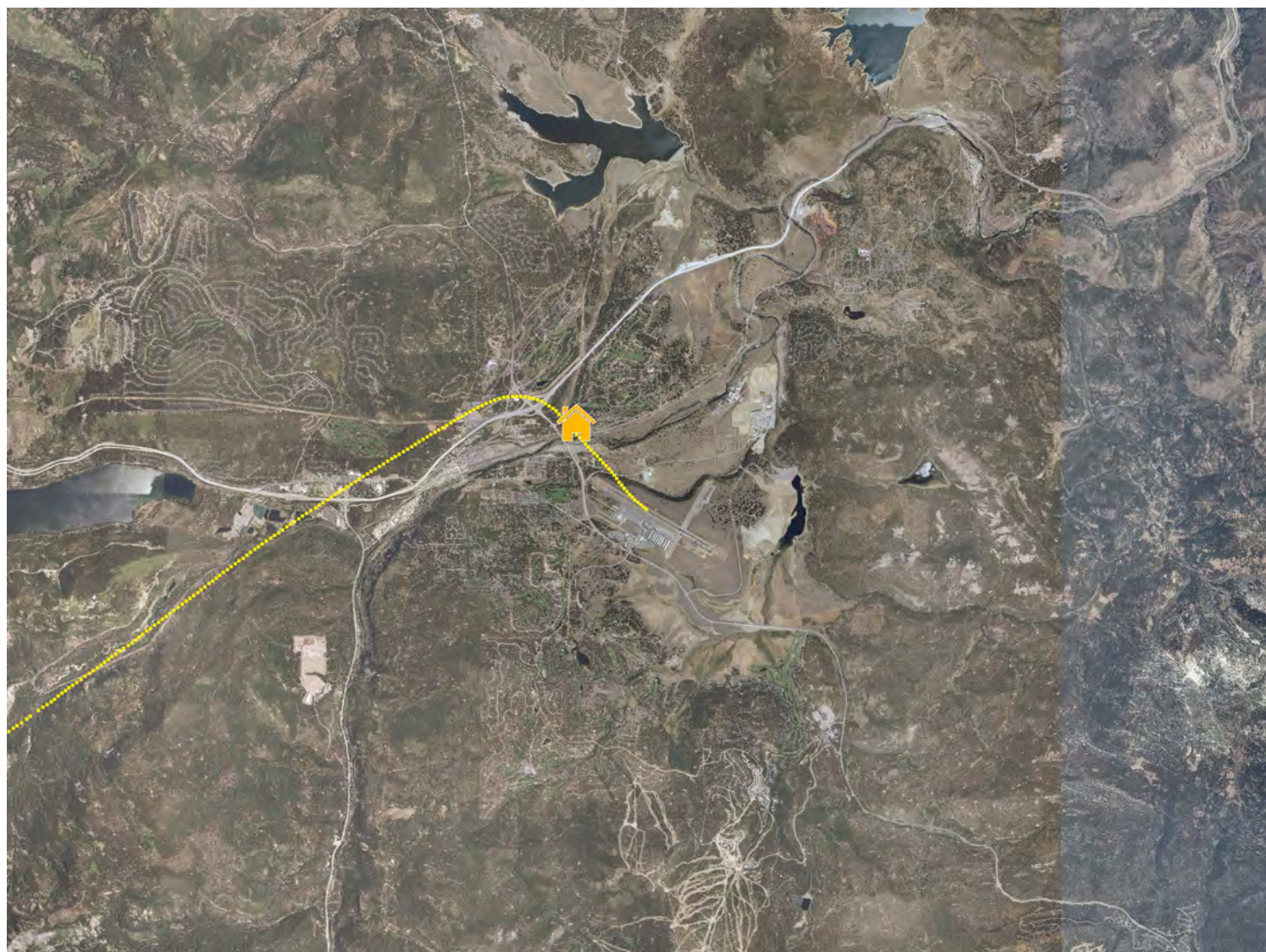
RUNWAY: 29

A/C TYPE: BE9T

DATE AND TIME: Jul 01 2016, 06:29 PM

POINT OF CLOSEST APPROACH(PCOA): 0.14 nm

ALTITUDE AT PCOA: 6600 ft



Comment: "twin engine out of pattern and low." Reached out to commenter. King Air was at 6,500' when at PCOA on departure and not in the residential area. Compliant VFR departure, but aircraft was close to Olympic Heights and staff emailed the PIC. This exemplifies a large number of Olympic Heights departure comments.

# NOISE COMPLAINT REPORT

COMPLAINT ID: 51266  
COMPLAINT TYPE: Off Course  
OPERATION TYPE: Departure  
RUNWAY: 29  
A/C TYPE: PC12

DATE AND TIME: Jul 01 2016, 07:35 PM  
POINT OF CLOSEST APPROACH(PCA): 0.14 nm  
ALTITUDE AT PCA: 6600 ft



PC12 departed 29 VFR. Not quite over Olympic Heights, but within a few hundred feet. Also, overflight over TD, but no comment received. Reached out to operator.

# NOISE COMPLAINT REPORT

COMPLAINT ID: 50526

COMPLAINT TYPE: Low And Loud

OPERATION TYPE: Departure

RUNWAY: 29

A/C TYPE: C425

DATE AND TIME: Jul 01 2016, 08:03 PM

POINT OF CLOSEST APPROACH(PCA): 0.18 nm

ALTITUDE AT PCA: 6600 ft



Cessna 425 Departed VFR Runway 29 with a right turn over Olympic Heights. Reached out to operator.

# NOISE COMPLAINT REPORT

COMPLAINT ID: 50551  
COMPLAINT TYPE: Loud  
OPERATION TYPE: Arrival  
RUNWAY: 11  
A/C TYPE: GLF4

DATE AND TIME: Jul 02 2016, 09:37 AM  
POINT OF CLOSEST APPROACH(PCA): 0.52 nm  
ALTITUDE AT PCA: 7500 ft

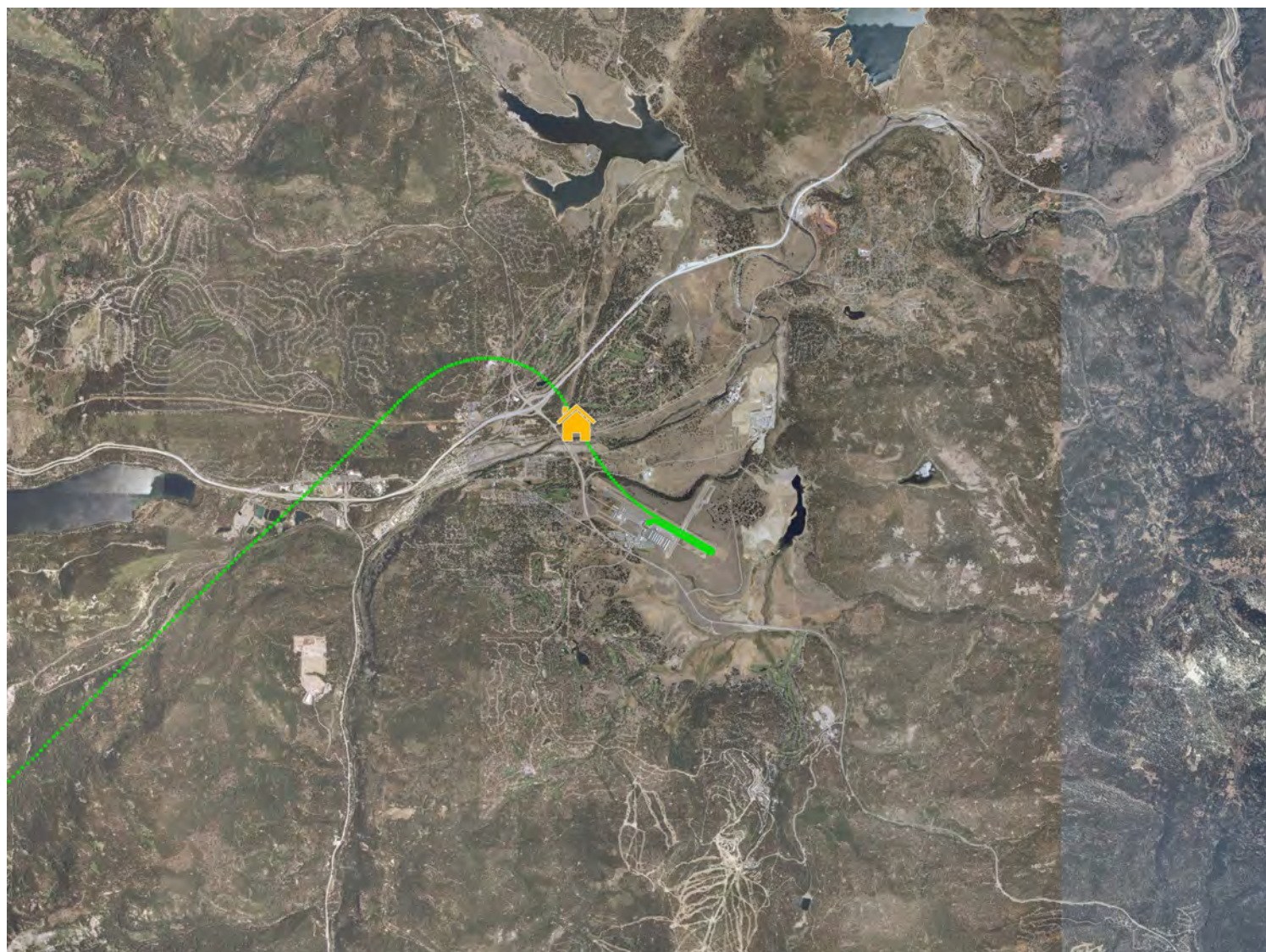


Gulfstream 4 arriving VFR left traffic to 11. Calm winds. Operation generated 3 community comments from the Prosser Lakeview and Prosser Heights areas; emailed and spoke to operator.

# NOISE COMPLAINT REPORT

COMPLAINT ID: 50578  
COMPLAINT TYPE: Off Course  
OPERATION TYPE: Departure  
RUNWAY: 29  
A/C TYPE: C525

DATE AND TIME: Jul 02 2016, 08:01 PM  
POINT OF CLOSEST APPROACH(PCA): 0.13 nm  
ALTITUDE AT PCA: 6700 ft



Comment: "Way out of pattern." Departure Runway 29 in VMC. Katie spoke to pilots prior to departure and advised them to take Truck Four SID out. It does not appear they followed the advice. Staff reached out to their dispatch and they said they would follow up with the pilots. Reached out to commenter - non-compliant departure over Olympic Heights.

MAC would note they did make the requested right turn up to the Bypass Bridge, just started it too early.



# NOISE COMPLAINT REPORT

COMPLAINT ID: 50634

COMPLAINT TYPE: Too early or late

OPERATION TYPE: Departure

RUNWAY: **29**

A/C TYPE: **C550**

DATE AND TIME: Jul 04 2016, 05:20 AM

POINT OF CLOSEST APPROACH(PCOA): 0.14 nm

ALTITUDE AT PCOA: 6500 ft



2 comments from Martis Valley Estates and Prosser Heights areas called about an early morning departure during curfew. Citation departed Runway 29 at 5:20 AM. Spoke to Chief Pilot - medical patient transfer from TF. Spoke to both commenters and let them know it was an EMS operation.

# NOISE COMPLAINT REPORT

COMPLAINT ID: 50663

COMPLAINT TYPE: Low And Loud

OPERATION TYPE: Arrival

RUNWAY: **29**

A/C TYPE: **C130**

DATE AND TIME: Jul 04 2016, 11:13 AM

POINT OF CLOSEST APPROACH(PCA): 0.25 nm

ALTITUDE AT PCA: 7400 ft



Low aircraft over home in Tahoe Donner. Arrival to 29 in VMC. 7400' over house. Spoke to commenter and operator to learn this was a C130 operating an exercise as part of the Incline Village Independence Day festivities.

# NOISE COMPLAINT REPORT

COMPLAINT ID: 50753

COMPLAINT TYPE: Low And Loud

OPERATION TYPE: Departure

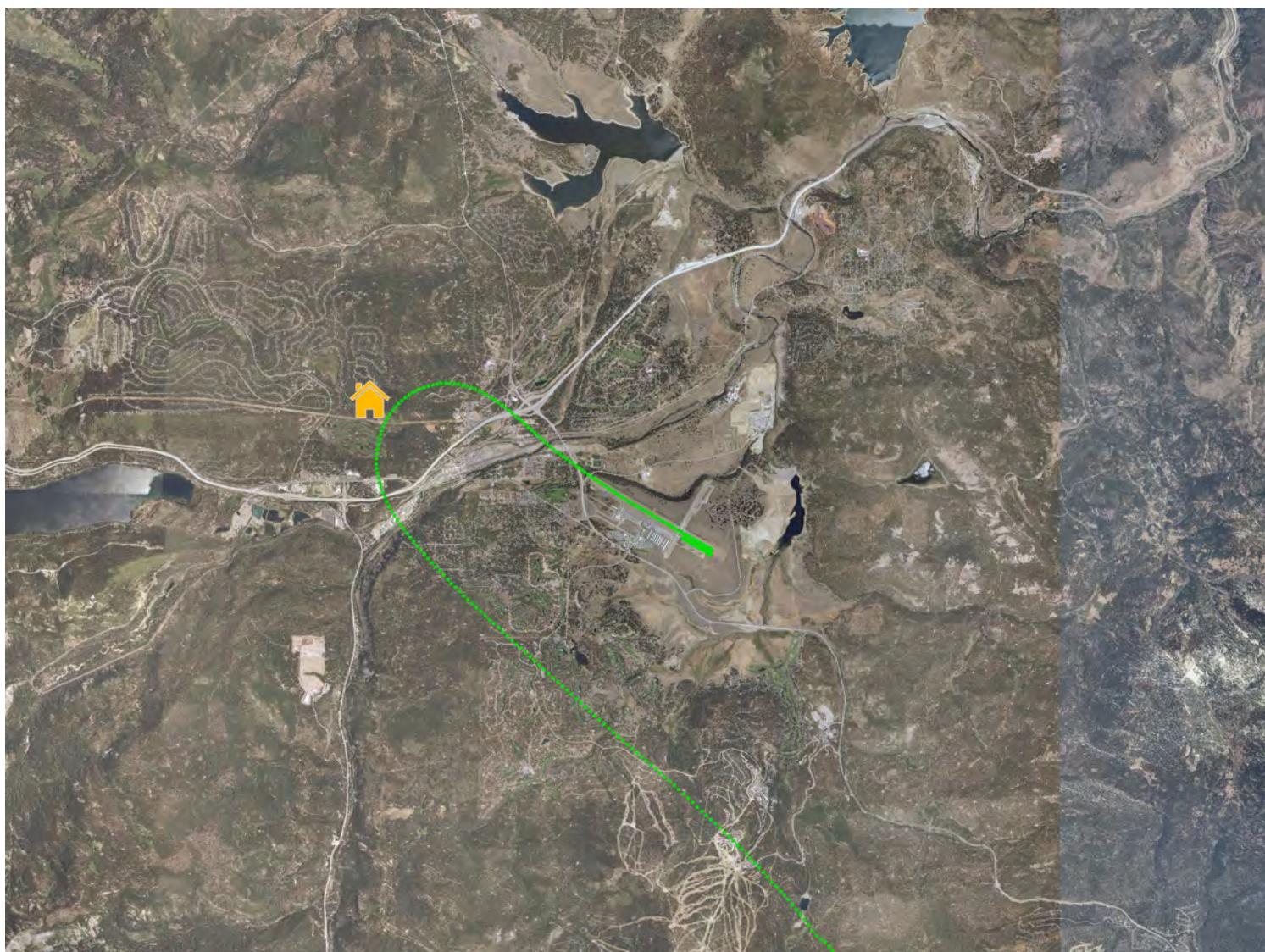
RUNWAY: 29

A/C TYPE: C130

DATE AND TIME: Jul 04 2016, 12:54 PM

POINT OF CLOSEST APPROACH(PCOA): 0.3 nm

ALTITUDE AT PCOA: 7200 ft



Commenter scared that aircraft was going to crash into home. MAC spoke to her. C130 departed 29 VFR. Called ANG and spoke to flight safety officer who stated the aircraft was participating in the Incline Village Independence Day event and dropping divers as part of the exercise. This aircraft generated 2 comments on 7/4. Spoke to SO about NAPs.

# NOISE COMPLAINT REPORT

COMPLAINT ID: 50690

COMPLAINT TYPE:

OPERATION TYPE: Departure

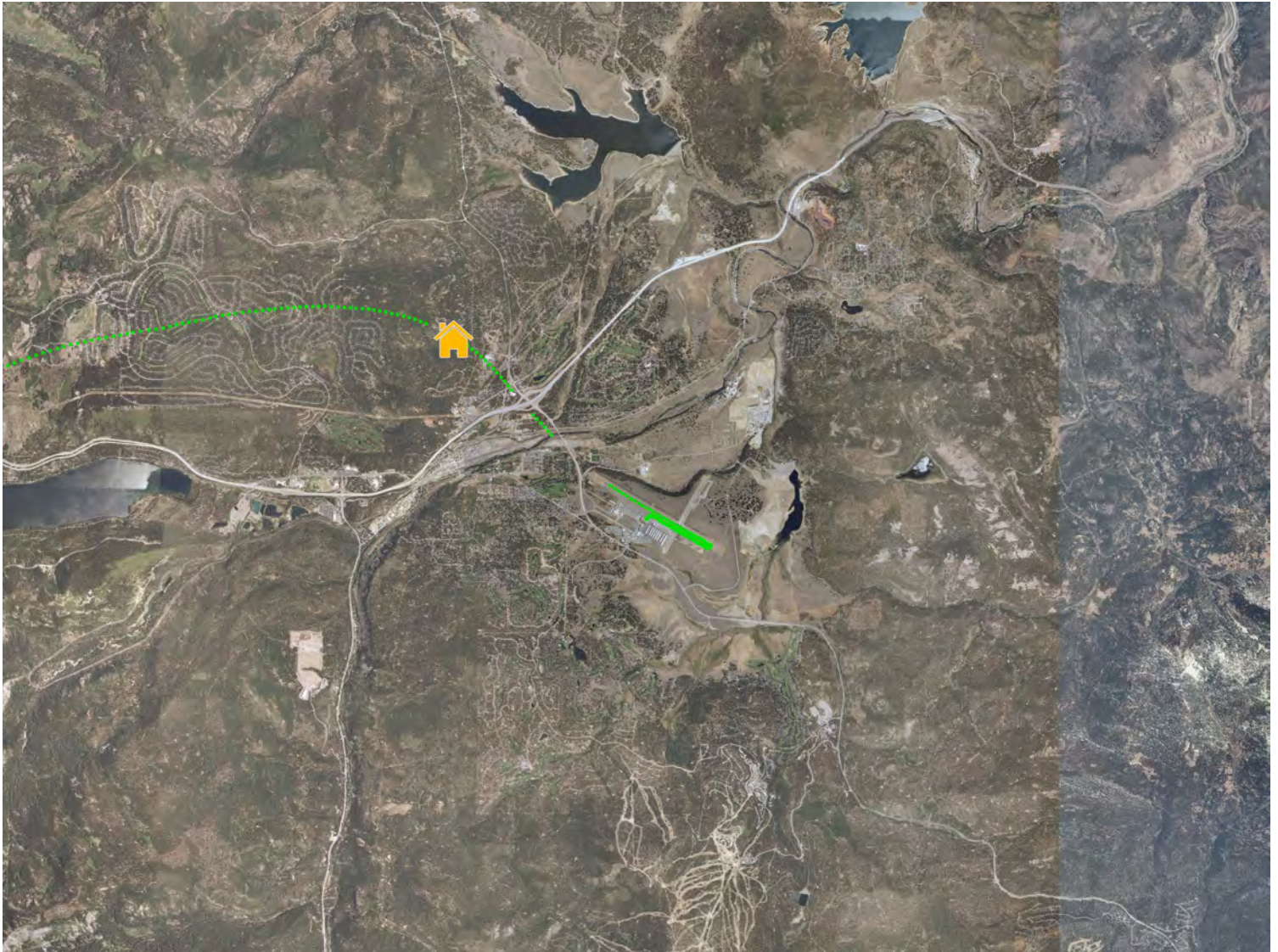
RUNWAY: 29

A/C TYPE: C650

DATE AND TIME: Jul 04 2016, 04:45 PM

POINT OF CLOSEST APPROACH(PCA): 0.29 nm

ALTITUDE AT PCA: 7600 ft



Citation departed Runway 29 in VMC with a departure to the west. Reached out to operator to request use of SID and best angle of climb or overfly I-80 to the west.

# NOISE COMPLAINT REPORT

COMPLAINT ID: 50846

COMPLAINT TYPE: Low And Loud

OPERATION TYPE: **Departure**

RUNWAY: **29**

A/C TYPE: **BE33**

DATE AND TIME: Jul 06 2016, 09:28 AM

POINT OF CLOSEST APPROACH(PCA): **.01 est**

ALTITUDE AT PCA: **6,500' est**



No track in system but after some significant digging and camera image review, staff was able to find the aircraft and make outreach to two pilots about this departure. Yellow track segment is only a few track points but after discussion with pilot it was confirmed. Emailed NAP info to Father and Son who both fly Bonanza's seasonally to KTRK and regularly got the NAP departure wrong.

# NOISE COMPLAINT REPORT

COMPLAINT ID: 50833

COMPLAINT TYPE: Loud Disturbance

OPERATION TYPE: Overflight

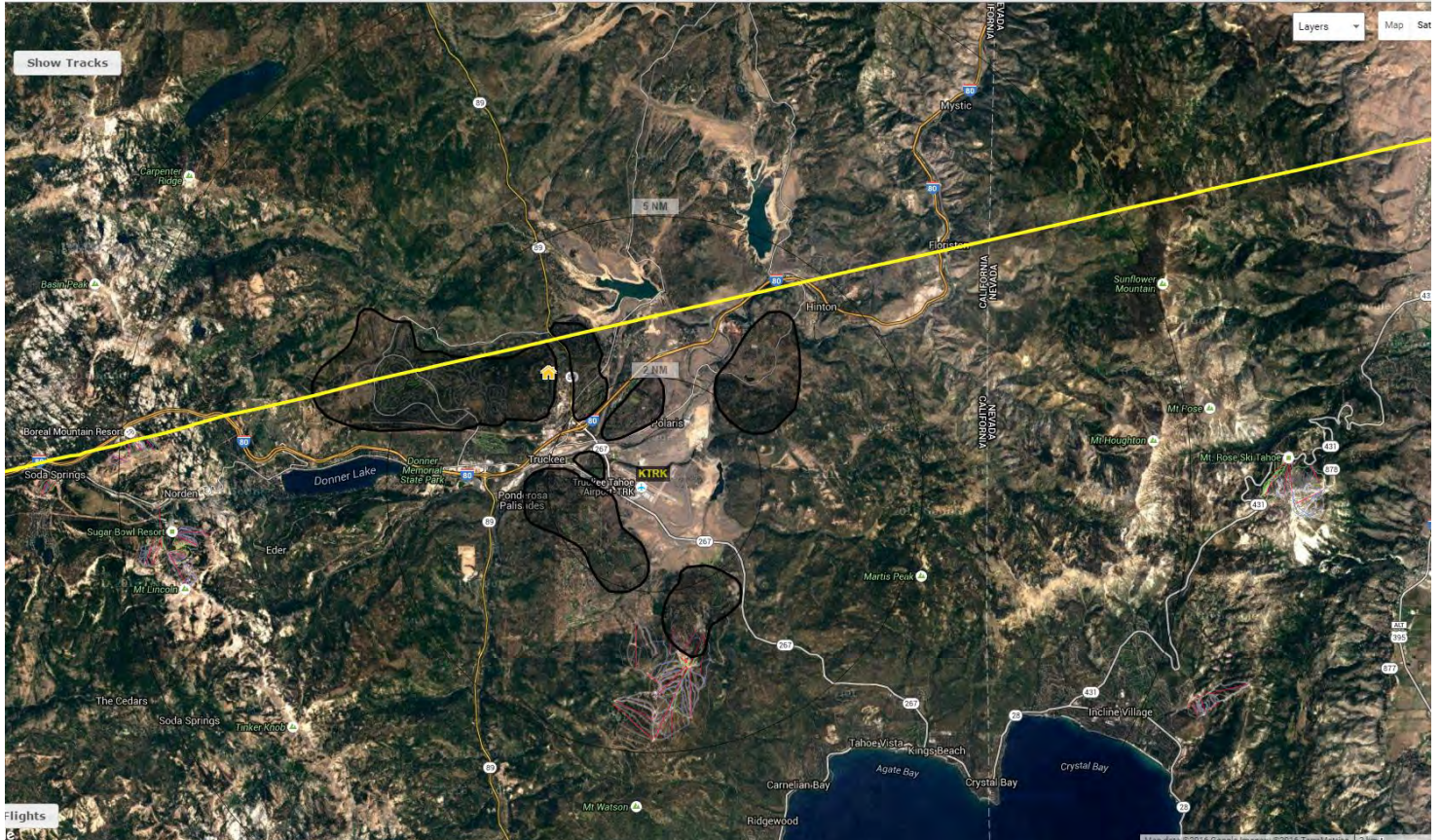
RUNWAY: NA

A/C TYPE: UNK/Mil Fighter

DATE AND TIME: Jul 07 2016, 06:42 PM

POINT OF CLOSEST APPROACH(PCA): NA

ALTITUDE AT PCA: 15,300'



Multiple comments (1 formal, plus 4 calls or inquiries) about a loud aircraft around 6:45 PM Thursday 7/7/16. No track ID & no operation at KTRK was found, but the tracking data and sound signature is consistent with a fast-moving military fighter jet.

# NOISE COMPLAINT REPORT

COMPLAINT ID: 51291

COMPLAINT TYPE: Off Course

OPERATION TYPE: UNKNOWN

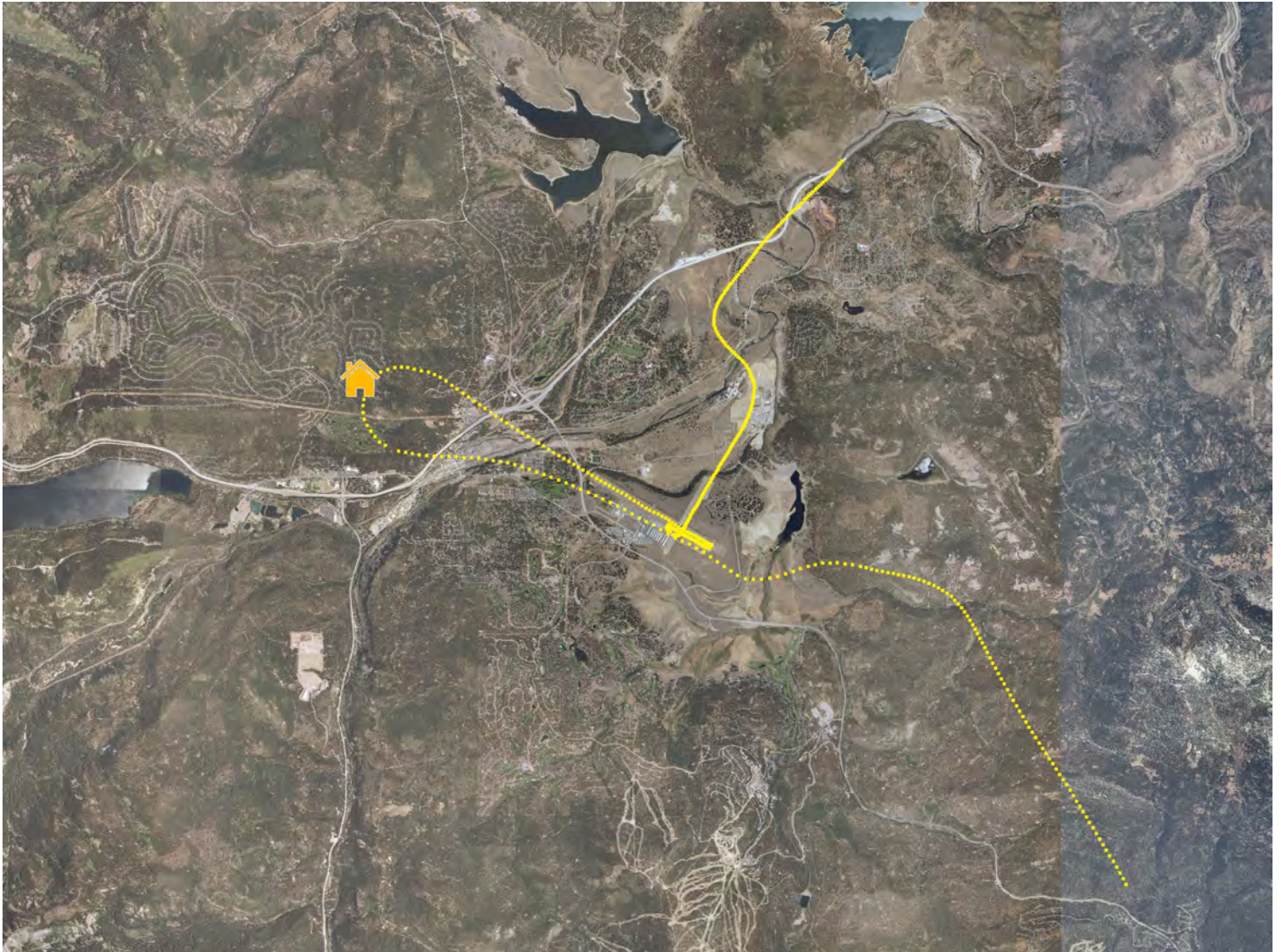
RUNWAY: 11

A/C TYPE: UNK

DATE AND TIME: Jul 10 2016, 09:03 AM

POINT OF CLOSEST APPROACH(PCA): 0.2 nm

ALTITUDE AT PCA: 7500 ft



# NOISE COMPLAINT REPORT

COMPLAINT ID: 51538  
COMPLAINT TYPE: Loud Disturbance  
OPERATION TYPE: Arrival  
RUNWAY: 29  
A/C TYPE: EPIC

DATE AND TIME: Jul 17 2016, 08:33 AM  
POINT OF CLOSEST APPROACH(PCA): 0.13 nm  
ALTITUDE AT PCA: 6700 ft



Very wide downwind to long left base for 29. Called and spoke to PIC who thought he was wide for spacing.



# NOISE COMPLAINT REPORT

COMPLAINT ID: 51536  
COMPLAINT TYPE: Low And Loud  
OPERATION TYPE: Arrival  
RUNWAY: 29  
A/C TYPE: HA4T

DATE AND TIME: Jul 17 2016, 11:15 AM  
POINT OF CLOSEST APPROACH(PCA): 0.25 nm  
ALTITUDE AT PCA: 7300 ft



Hawker 4000 unusual, circuitous route in with a left 360 over TD and Donner and then went around for 29. Windy day. Requested Pilot Outreach Coordinator make outreach to operator to consider Tahoe Visual arrival or other arrival alternatives.

# NOISE COMPLAINT REPORT

COMPLAINT ID: 51670

COMPLAINT TYPE: Low And Loud

OPERATION TYPE: Departure

RUNWAY: 29

A/C TYPE: C172

DATE AND TIME: Jul 21 2016, 08:02 AM

POINT OF CLOSEST APPROACH(PCA): 0.12 nm

ALTITUDE AT PCA: 6300 ft



Aircraft off course on 29 VFR departure. Flew over Olympic Heights. Called and spoke to pilot.

# NOISE COMPLAINT REPORT

COMPLAINT ID: 51663

COMPLAINT TYPE: Low And Loud

OPERATION TYPE: Arrival

RUNWAY: **29**

A/C TYPE: B350

DATE AND TIME: Jul 21 2016, 01:20 PM

POINT OF CLOSEST APPROACH(PCA): 0.23 nm

ALTITUDE AT PCA: 7100 ft



Comment: "Landing right over house. Loud."

King Air made visual arrival to 29 with a left overhead 360 over Old Greenwood, Prosser Lakeview and Prosser Heights. I spoke with this pilot when he landed on 7/21. He mentioned this flight and was not aware of the NAP's and of the airport/terrain/non-towered airspace. We discussed him using the Tahoe Visual for future arrivals into the area. -Katie  
Non-compliant.

# NOISE COMPLAINT REPORT

COMPLAINT ID: 51773  
COMPLAINT TYPE: Low  
OPERATION TYPE: Arrival  
RUNWAY: 29  
A/C TYPE: GLF4

DATE AND TIME: Jul 23 2016, 09:40 AM  
POINT OF CLOSEST APPROACH(PCA): 0.19 nm  
ALTITUDE AT PCA: 6300 ft



Gulfstream GLF4 made right traffic to Runway 29 and then had to go around. 2 complaints from this operation, Northstar and Martis Valley Estates. Contacted commenters and had Katie email operator.

# NOISE COMPLAINT REPORT

COMPLAINT ID: 52028  
COMPLAINT TYPE: Low  
OPERATION TYPE: Arrival  
RUNWAY: 29  
A/C TYPE: C680

DATE AND TIME: Jul 23 2016, 07:18 PM  
POINT OF CLOSEST APPROACH(PCA): 0.14 nm  
ALTITUDE AT PCA: 6600 ft



Citation Sovereign arrival to Runway 29 in VMC. 360'agl, low over Northstar. Staff requested operator use Tahoe Visual arrival when possible.

# NOISE COMPLAINT REPORT

COMPLAINT ID: 51953  
COMPLAINT TYPE: Low  
OPERATION TYPE: Departure  
RUNWAY: 29  
A/C TYPE: F900

DATE AND TIME: Jul 24 2016, 05:11 PM  
POINT OF CLOSEST APPROACH(PCA): 0.18 nm  
ALTITUDE AT PCA: 6900 ft



Falcon 900 departed Runway 29 VFR. 1010' AGL. Non-Compliant operation generated 2 community comments. Staff spoke to company Chief Pilot who apologized and explained it was a first time visit for the PIC.

# NOISE COMPLAINT REPORT

COMPLAINT ID: 51957

COMPLAINT TYPE: Off Course

OPERATION TYPE: Departure

RUNWAY: 29

A/C TYPE: PC12

DATE AND TIME: Jul 24 2016, 05:30 PM

POINT OF CLOSEST APPROACH(PCA): 0.15 nm

ALTITUDE AT PCA: 6700 ft



Pilatus PC12 at 810'agl at PCA. Non-compliant, 29 VFR departure over Olympic Heights. Spoke to chief pilot, a regular visitor who normally does not generate annoyance comments.

# NOISE COMPLAINT REPORT

COMPLAINT ID: 52033

COMPLAINT TYPE: Off Course

OPERATION TYPE: Departure

RUNWAY: 29

A/C TYPE: BE30

DATE AND TIME: Jul 25 2016, 06:56 PM

POINT OF CLOSEST APPROACH(PCOA): 0.12 nm

ALTITUDE AT PCA: 6600 ft



King Air 300 departure runway 29 in VFR. Was east of bypass over Olympic Heights at 800'agl. Investigation of long term activity showed regular overflights of Olympic Heights. Spoke to PIC who has been operating here for many years and did not realize the mistake. He apologized and said he will get it right from now on.



# NOISE COMPLAINT REPORT

COMPLAINT ID: 52263  
COMPLAINT TYPE: Off Course  
OPERATION TYPE: Departure  
RUNWAY: **29**  
A/C TYPE: **C414**

DATE AND TIME: Jul 29 2016, 07:07 PM  
POINT OF CLOSEST APPROACH(PCA): 0.11 nm  
ALTITUDE AT PCA: 6500 ft



Chancellor, twin Cessna, departed runway 29 in VMC, 600'agl over Olympic Heights. Emailed and heard back from owner.

# NOISE COMPLAINT REPORT

COMPLAINT ID: 52426

COMPLAINT TYPE: Loud Disturbance

OPERATION TYPE: Departure

RUNWAY: 20

A/C TYPE: C206

DATE AND TIME: Jul 30 2016, 07:35 AM

POINT OF CLOSEST APPROACH(PCOA): 0.49 nm

ALTITUDE AT PCA: 7500 ft



C206 Departed 20 for Skydive operation. Multiple comments as to the loudness of the aircraft. Emailed operator and emailed commenters.

# NOISE COMPLAINT REPORT

COMPLAINT ID: 52517

COMPLAINT TYPE: Loud Disturbance

OPERATION TYPE: Departure

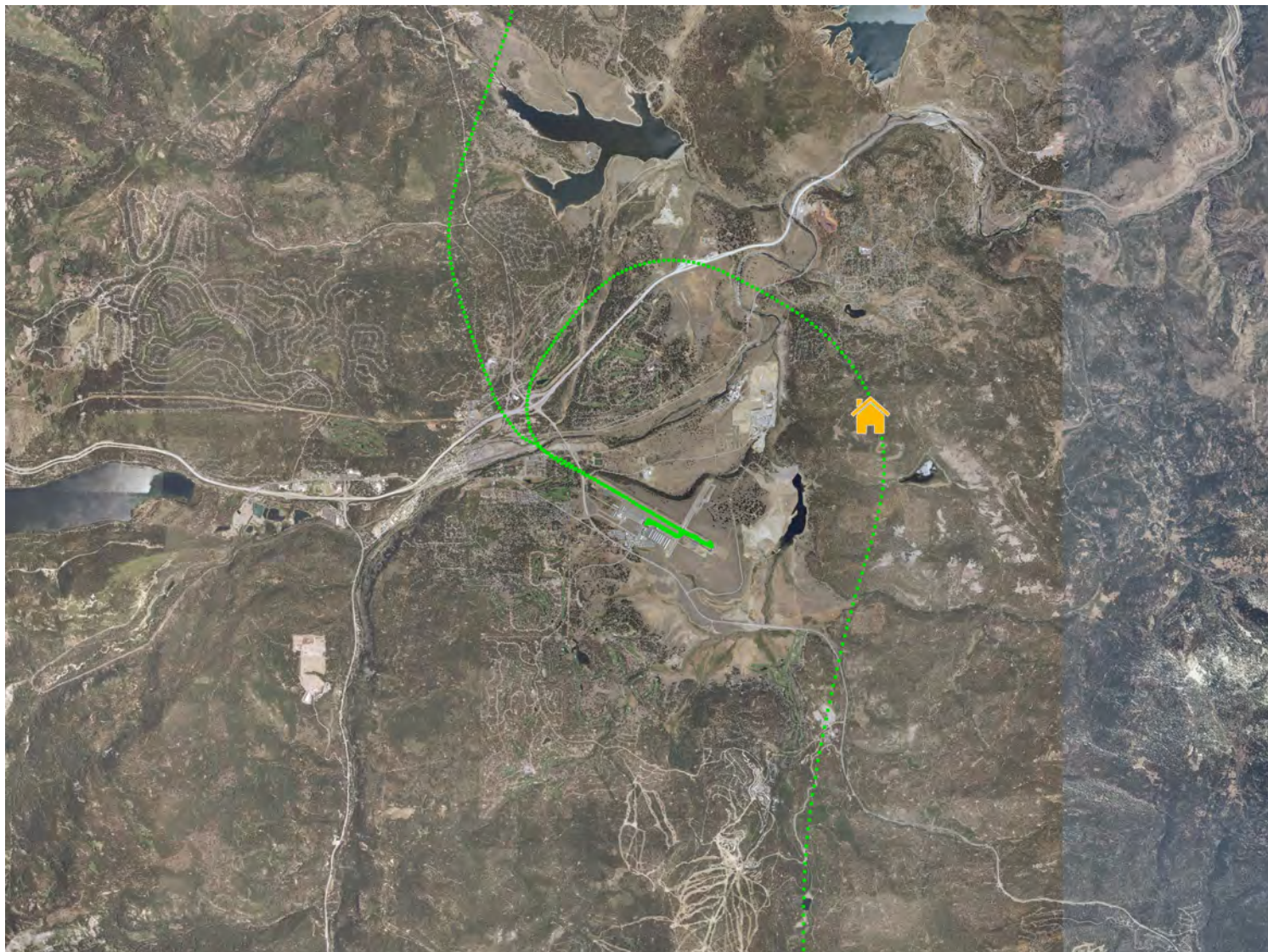
RUNWAY: 11

A/C TYPE: FA50

DATE AND TIME: Jul 31 2016, 09:55 AM

POINT OF CLOSEST APPROACH(PCA): 0.16 nm

ALTITUDE AT PCA: 7400 ft



Comment: "On Sunday July 31st at around 10am and another at 10:25 2 planes flew over our house just above tree top. We are sick and tired of this. Very annoying and an invasion of our privacy"

Falcon 50 made visual arrival to 11 with a wide left crosswind to downwind through glider area and over Glenshire. Emailed commenter and operator. The other comment referenced above was a Citation 10 at 13,000' about 1 mile west and compliant.

# NOISE COMPLAINT REPORT

COMPLAINT ID: 52422

COMPLAINT TYPE: Loud Disturbance

OPERATION TYPE: Arrival

RUNWAY: 11

A/C TYPE: F2TH

DATE AND TIME: Jul 31 2016, 01:30 PM

POINT OF CLOSEST APPROACH(PCOA): 0.22 nm

ALTITUDE AT PCA: 7100 ft



Comment from Prosser Heights: "Huge Jet....not huge just really loud....it's becoming a quality of life issue"  
Falcon 2000 making a visual arrival to Runway 11. Emailed operator.

# NOISE COMPLAINT REPORT

COMPLAINT ID: 52400  
COMPLAINT TYPE: Off Course  
OPERATION TYPE: Departure  
RUNWAY: 29  
A/C TYPE: PC12

DATE AND TIME: Jul 31 2016, 08:19 PM  
POINT OF CLOSEST APPROACH(PCA): 0.16 nm  
ALTITUDE AT PCA: 6700 ft



PC12 departed 29 in VMC. Close to, but not over west end of Olympic Heights. Made outreach to operator with request to avoid Olympic Heights.