

NOISE COMPLAINT REPORT

COMPLAINT ID: 53492

COMPLAINT TYPE: Loud Disturbance

OPERATION TYPE: Arrival

RUNWAY: 11

A/C TYPE: GLEX

DATE AND TIME: Aug 01 2016, 01:06 PM

POINT OF CLOSEST APPROACH(PCA): 0.25 nm

ALTITUDE AT PCA: 7300 ft



Global Express made a wide left 360 to land Runway 11 and generated 2 comments from Tahoe Donner as well as traversing through the glider activity area. Staff reached out to company safety officer.

NOISE COMPLAINT REPORT

COMPLAINT ID: 52478

COMPLAINT TYPE: Loud Disturbance

OPERATION TYPE: Departure

RUNWAY: 29

A/C TYPE: C501

DATE AND TIME: Aug 01 2016, 06:28 PM

POINT OF CLOSEST APPROACH(PCA): 2.05 nm

ALTITUDE AT PCA: 6900 ft



Citation CJ departed VFR. Comment came from TD but track showed overflight of Olympic Heights and Tahoe Donner. Staff emailed operator who replied they turned early to avoid inbound traffic.

NOISE COMPLAINT REPORT

COMPLAINT ID: 52539

COMPLAINT TYPE: Low And Loud

OPERATION TYPE: Departure(s)

RUNWAY: 29

A/C TYPE: SR22 & PA32

DATE AND TIME: Aug 03 2016, 12:50 PM

POINT OF CLOSEST APPROACH(PCA): 0.08 nm

ALTITUDE AT PCA: 6300 ft



Comment from Olypic Heights about piston departure overflight.

A Cirrus SR22 made a straight out departure (green) over Martis Valley Estates - collateral association, not primary, but made outreach based on NC departure.

A Piper Cherokee was most likely primary culprit which generated the comment. Track segment is in yellow directly over caller's house. Called pilot.

NOISE COMPLAINT REPORT

COMPLAINT ID: 52540
COMPLAINT TYPE: Off Course
OPERATION TYPE: Arrival
RUNWAY: **20**
A/C TYPE: E55P

DATE AND TIME: Aug 04 2016, 12:39 PM
POINT OF CLOSEST APPROACH(PCA): 0.12 nm
ALTITUDE AT PCA: 6600 ft



This aircraft, a Phenom 300 and a twin Cessna 310 shortly after both overshot centerline of 20 when turning base to final. 11/29 was closed for the day for construction. Spoke to commenter, a first time caller from Glenshire and made outreach to both aircraft operators.

NOISE COMPLAINT REPORT

COMPLAINT ID: 53035

COMPLAINT TYPE: Low

OPERATION TYPE: Departure

RUNWAY: 20

A/C TYPE: PA25

DATE AND TIME: Aug 05 2016, 01:35 PM

POINT OF CLOSEST APPROACH(PCA): 0.24 nm

ALTITUDE AT PCA: 7300 ft



Towplane over Glenshire making a climbing left 360. Emailed operator and spoke to first time commenter.

NOISE COMPLAINT REPORT

COMPLAINT ID: 52630
COMPLAINT TYPE: Loud x 3
OPERATION TYPE: Departure
RUNWAY: 29
A/C TYPE: FA50

DATE AND TIME: Aug 07 2016, 08:47 PM
POINT OF CLOSEST APPROACH(PCA): 0.62 nm
ALTITUDE AT PCA: 7500 ft



3 Comments on this Truck Four departure by a Falcon 50:

"Loud jet flew right over Olympic Blvd at 8:47. No need to call or email me."

"Super loud jet flying low be Olympic Heights. Kids sleeping and woke them up."

"8:47pm jet flies over in disturbs dinner at Gray's Crossing"

One commenter was mis-informed about the curfew time. Analysis does not indicate aircraft was over Olympic Heights, but certainly very close and west of bypass and at 6,700' msl when climbing out.

Staff replied to all commenters and reached out to aircraft operator, a summer regular, who is very receptive to amending procedures for noise mitigation. Pilot stated they would plan departures before 8 PM and are open to alternative departure procedures.

NOISE COMPLAINT REPORT

COMPLAINT ID: 52626

COMPLAINT TYPE: Early

OPERATION TYPE: Departure

RUNWAY: 29

A/C TYPE: PA32 / C210

DATE AND TIME: Aug 08 2016, 06:10 AM

POINT OF CLOSEST APPROACH(PCA): 0.25 nm

ALTITUDE AT PCA: 6400 ft



Two piston aircraft, a Piper PA32 and a Cessna 210 (not depicted) both departed from runway 29 just after 6 AM. Staff spoke to one aircraft owner and mailed a letter to the other.

NOISE COMPLAINT REPORT

COMPLAINT ID: 53022

COMPLAINT TYPE: Off Course

OPERATION TYPE: Departure

RUNWAY: 29

A/C TYPE: C182

DATE AND TIME: Aug 08 2016, 02:50 PM

POINT OF CLOSEST APPROACH(PCA): 0.09 nm

ALTITUDE AT PCA: 6300 ft



Cessna Skylane C182 departure from Runway 29 and climbed through 450'agl, the aircraft then made a non-compliant left turn out over Martis Valley Estates/Ponderosa. No contact info other than registry address, so staff mailed letter.

NOISE COMPLAINT REPORT

COMPLAINT ID: 53021

COMPLAINT TYPE: Off course

OPERATION TYPE: Arrival

RUNWAY: 29

A/C TYPE: C421

DATE AND TIME: Aug 10 2016, 11:10 AM

POINT OF CLOSEST APPROACH(PCA): 0.13 nm

ALTITUDE AT PCA: 6700 ft



Comment from Martis Valley Estates - low and off course. Cessna 421 arrival from Northstar ridge with a very circuitous route through the glider activity area and over several residential areas. Staff left letter on plane.

NOISE COMPLAINT REPORT

COMPLAINT ID: 53049

COMPLAINT TYPE: Off Course

OPERATION TYPE: Arrival

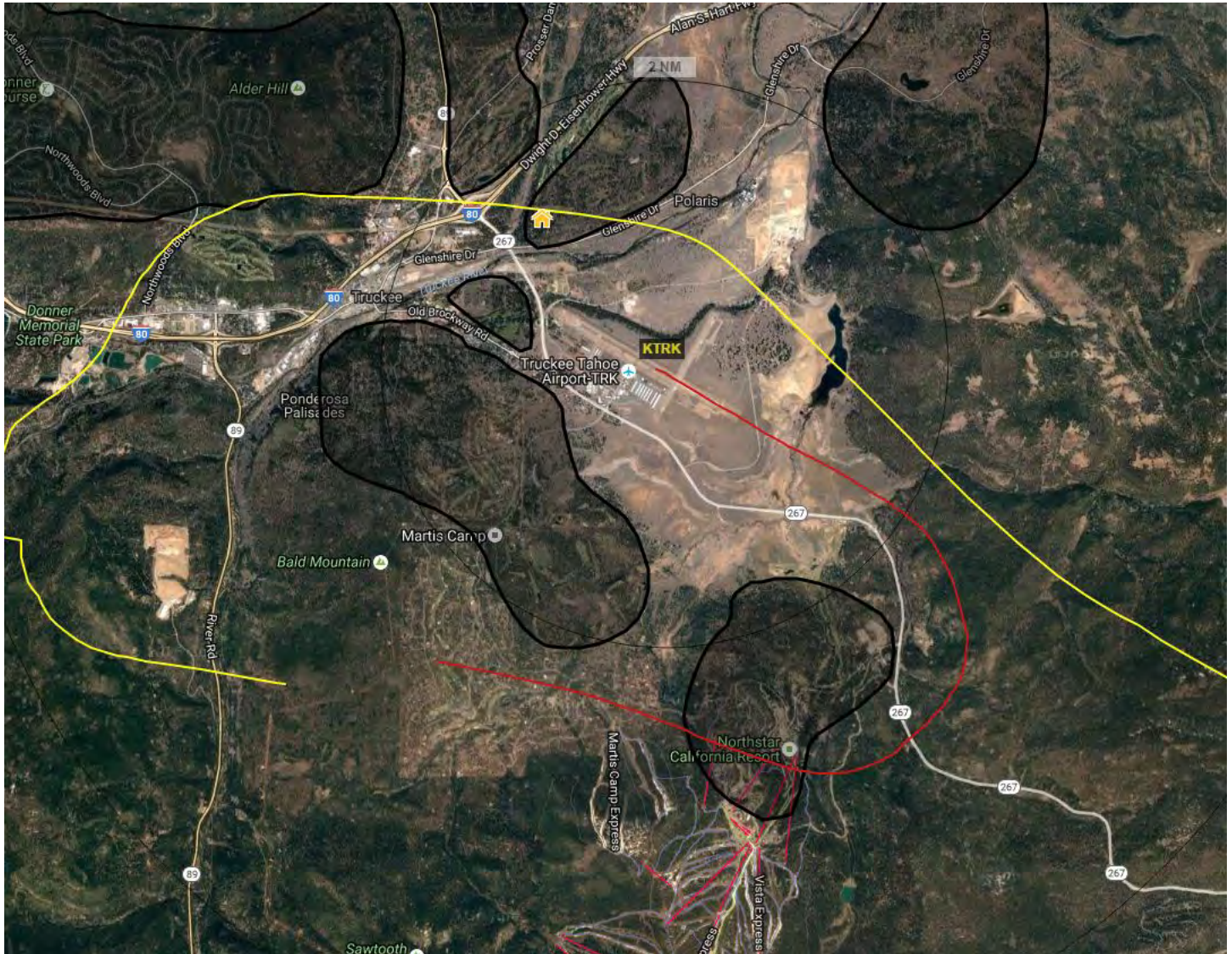
RUNWAY: 29

A/C TYPE: CL30

DATE AND TIME: Aug 10 2016, 05:06 PM

POINT OF CLOSEST APPROACH(PCA): 0.6 nm

ALTITUDE AT PCA: 9400 ft



Challenger made visual arrival from the east on an overhead left 360 entry for 29. Track breaks behind Bald Mountain and shows some slight multi-pathing at crosswind to downwind. Aircraft flew through glider activity area at 10,200' msl then made left crosswind to wide left downwind for 29, overflying multiple residential areas and generating a comment from Olympic Heights. Staff emailed operator with request to fly the visual arrival from the south or an IAP.

NOISE COMPLAINT REPORT

COMPLAINT ID: 53151
COMPLAINT TYPE: Loud Disturbance
OPERATION TYPE: Departure
RUNWAY: 11
A/C TYPE: C172

DATE AND TIME: Aug 12 2016, 05:15 AM
POINT OF CLOSEST APPROACH(PCA): 2.13 nm
ALTITUDE AT PCA: 9100 ft



C172 Departure at 5:15 AM. Curfew violation generated one comment from an airport employee's mother. Left violation letter on aircraft.

NOISE COMPLAINT REPORT

COMPLAINT ID: 53150

COMPLAINT TYPE: Low And Loud

OPERATION TYPE: Arrival

RUNWAY: 11

A/C TYPE: C750

DATE AND TIME: Aug 12 2016, 06:45 AM

POINT OF CLOSEST APPROACH(PCA): 0.43 nm

ALTITUDE AT PCA: 7500 ft



A Citation 10 arrived to Runway 11 at 6:45 AM, violating the voluntary curfew and generating 2 comments. Staff emailed operator.

NOISE COMPLAINT REPORT

COMPLAINT ID: 53153
COMPLAINT TYPE: Off Course
OPERATION TYPE: Arrival
RUNWAY: 29
A/C TYPE: C680

DATE AND TIME: Aug 12 2016, 07:32 AM
POINT OF CLOSEST APPROACH(PCA): 0.15 nm
ALTITUDE AT PCA: 6700 ft



Citation Sovereign made left traffic to 29 in a fairly normal scenario, but a little low. Not a regular operator; staff made outreach and suggested Tahoe Visual arrival.

NOISE COMPLAINT REPORT

COMPLAINT ID: 53186

COMPLAINT TYPE: Low And Loud

OPERATION TYPE: Arrival

RUNWAY: 02

A/C TYPE: Unk - BE35 likely

DATE AND TIME: Aug 13 2016, 10:05 AM

POINT OF CLOSEST APPROACH(PCA): 0.14 nm

ALTITUDE AT PCA: 6500 ft



Comment: "Low flying, noisy aircraft just flew into airport over Ponderosa Ranchos and Shaffer's Mill"
Could not positively ID aircraft but narrowed down based on camera imagery and made outreach to all possible suspects. Staff and a CFI had conversations about Rwy 02 arrivals and how to judge compliance and weather extended left base is a good practice. Outreach was based on altitude, about 500' agl, but very subjective and not in violation of any FARs. Mailed a letter as there was no contact info for operator, only registry address.

NOISE COMPLAINT REPORT

COMPLAINT ID: 53194

COMPLAINT TYPE: Off Course

OPERATION TYPE: Arrival

RUNWAY: 20

A/C TYPE: C182

DATE AND TIME: Aug 13 2016, 12:05 PM

POINT OF CLOSEST APPROACH(PCA): 0.1 nm

ALTITUDE AT PCA: 6500 ft



Comment: "incoming single engine white with red under wings flew directly over house, not following flight pattern"

C182 Skylane made a visual arrival to Runway 20 - track is broken in image about. Emailed operator and asked to extend along 80 to avoid residential area. This commenter is in a tough spot on right base for Runway 20 in an unpopulated area just pass the eastern end of Olympic Heights.

NOISE COMPLAINT REPORT

COMPLAINT ID: 53465

COMPLAINT TYPE: Low And Loud

OPERATION TYPE: Arrival

RUNWAY: 11

A/C TYPE: CL30

DATE AND TIME: Aug 13 2016, 01:14 PM

POINT OF CLOSEST APPROACH(PCA): 0.28 nm

ALTITUDE AT PCA: 7600 ft



Commenter left voice mail that this aircraft was overhead and particularly low and low and that the frequency of traffic over the neighborhood is a concern.

Called commenter back and emailed follow up information.

Challenger 300 flew a visual arrival to Runway 11 in VMC, entering the pattern on a long final. Staff reached out to operator with requests to fly IAP when 11 is active or alternative arrivals to 29. Had the aircraft flown the IAP to 11, the overflight would have moved toward Alder Hill and potentially created annoyance there rather than in TD.

NOISE COMPLAINT REPORT

COMPLAINT ID: 53244
COMPLAINT TYPE: Low
OPERATION TYPE: Arrival
RUNWAY: 20
A/C TYPE: PC12

DATE AND TIME: Aug 14 2016, 02:05 PM
POINT OF CLOSEST APPROACH(PCA): 0.2 nm
ALTITUDE AT PCA: 7200 ft



PC12 made left traffic to Runway 20, through glider area and over Glenshire which generated 2 comments. Outreach to company made and regular outreach to operator occurs almost daily.

NOISE COMPLAINT REPORT

COMPLAINT ID: 53369

COMPLAINT TYPE: Loud Disturbance

OPERATION TYPE: Departure

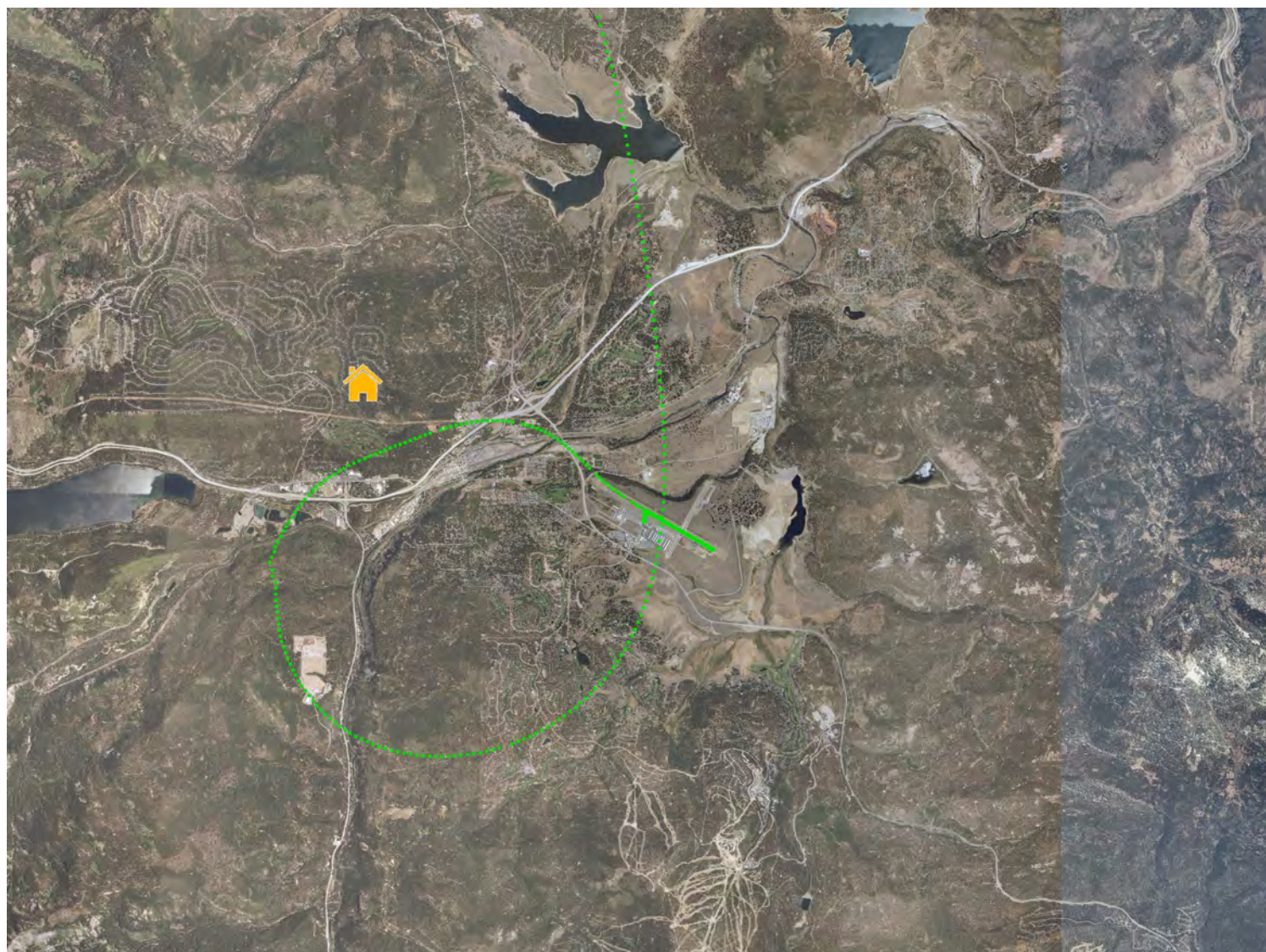
RUNWAY: 29

A/C TYPE: GLEX

DATE AND TIME: Aug 15 2016, 03:46 PM

POINT OF CLOSEST APPROACH(PCA): 0.76 nm

ALTITUDE AT PCA: 8600 ft



Comment: "Holy cow. It sounded and looked like a ERJ or DC9??? Two rear engines. Taking off heading west."

Global Express did a max performance climbing left 360. Avoided all residential area overflight until the hook north by which time aircraft was at 14,000' over Northstar and by Prosser it was at 15,300'. Crew is willing to try new tactics to mitigate noise and this was one. Staff queried the commenter: barring and operation from happening at all, is it better to have the duration shorter but probably louder or better it to be longer and more likely over residential areas? Awaiting reply.

Not a departure that could be utilized by the majority of operators, but interesting concept for discussion and research.

NOISE COMPLAINT REPORT

COMPLAINT ID: 53403

COMPLAINT TYPE: Low And Loud

OPERATION TYPE: Arrival

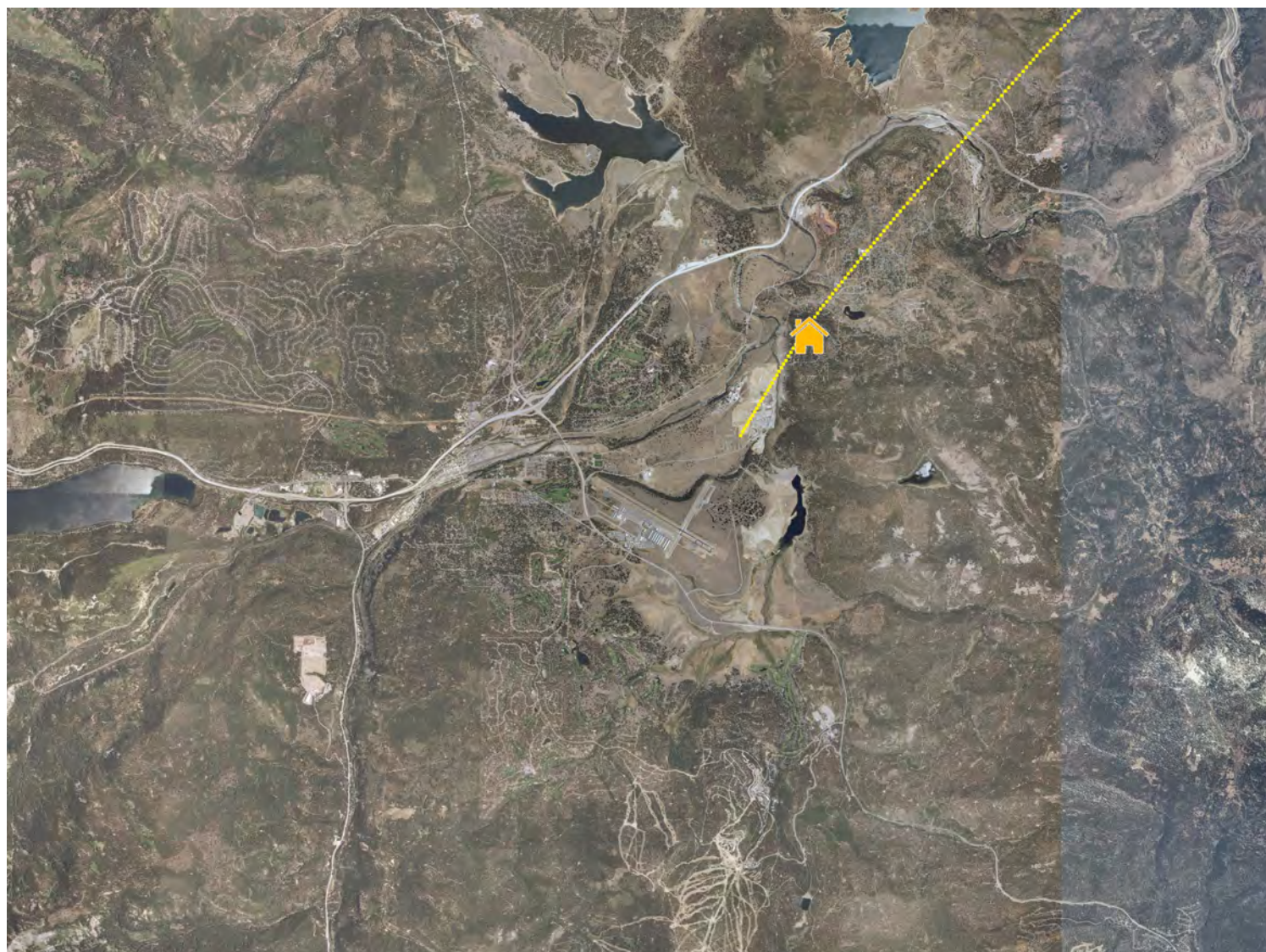
RUNWAY: 20

A/C TYPE: UNK - likely Piston

DATE AND TIME: Aug 16 2016, 09:30 AM

POINT OF CLOSEST APPROACH(PCA): 0.11 nm

ALTITUDE AT PCA: 6500 ft



Comment: "An very large and LOUD airplane just flew extremely low directly over my home. This is absolutely rude and uncalled for."

Glenshire resident was disturbed an overflight at 9:32 am which flew straight in for 20. Unidentified track arrived 20 and looked to be coming from 80 E. No matching camera image to arrival could be found. Non-compliant. No ID.

NOISE COMPLAINT REPORT

COMPLAINT ID: 53519

COMPLAINT TYPE: Low And Loud

OPERATION TYPE: Departure

RUNWAY: 29

A/C TYPE: C525

DATE AND TIME: Aug 18 2016, 09:15 PM

POINT OF CLOSEST APPROACH(PCA): 0.97 nm

ALTITUDE AT PCA: 5800 ft

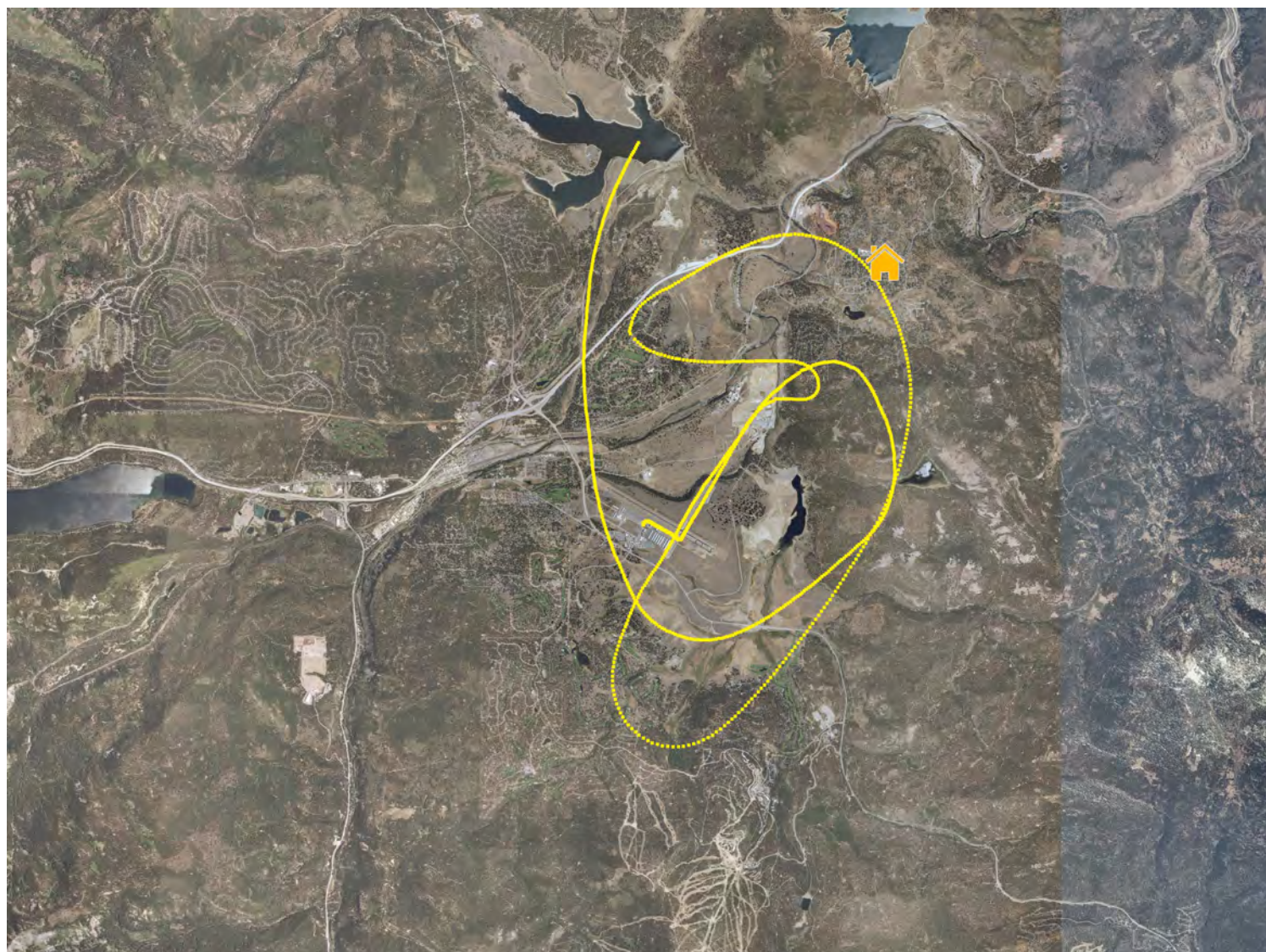


Citation 525 departed at 9:15 PM and grazed the western edge of Olympic Heights, generating 2 comments. Staff spoke to pilot.

NOISE COMPLAINT REPORT

COMPLAINT ID: 53941
COMPLAINT TYPE: Frequent
OPERATION TYPE: Arrival
RUNWAY: 20
A/C TYPE: C206

DATE AND TIME: Aug 23 2016, 08:59 AM
POINT OF CLOSEST APPROACH(PCA): 0.68 nm
ALTITUDE AT PCA: 9900 ft



Comment: 40 yrs in Glenshire, she'd never thought she'd complain, but the last 2 weeks have been almost unbearable..

This track has been correlated to the Cessna 206 used for skydiving. The aircraft was at 9,900' at the point of closest approach and there was another overflight by a transitioning aircraft at 11,700' within a few minutes. Staff has met with the business operators who have been very cooperative and in contact with some community members fielding comments and attempting to develop quieter operating scenarios and reduce overall impact. The airport is working with the operator to get a better transponder installed in the aircraft as well.

NOISE COMPLAINT REPORT

COMPLAINT ID: 55546
COMPLAINT TYPE: Low
OPERATION TYPE: Arrival
RUNWAY: 2
A/C TYPE: CL30

DATE AND TIME: Aug 23 2016, 09:00 AM
POINT OF CLOSEST APPROACH(PCA): 0.21 nm
ALTITUDE AT PCA: 7200 ft

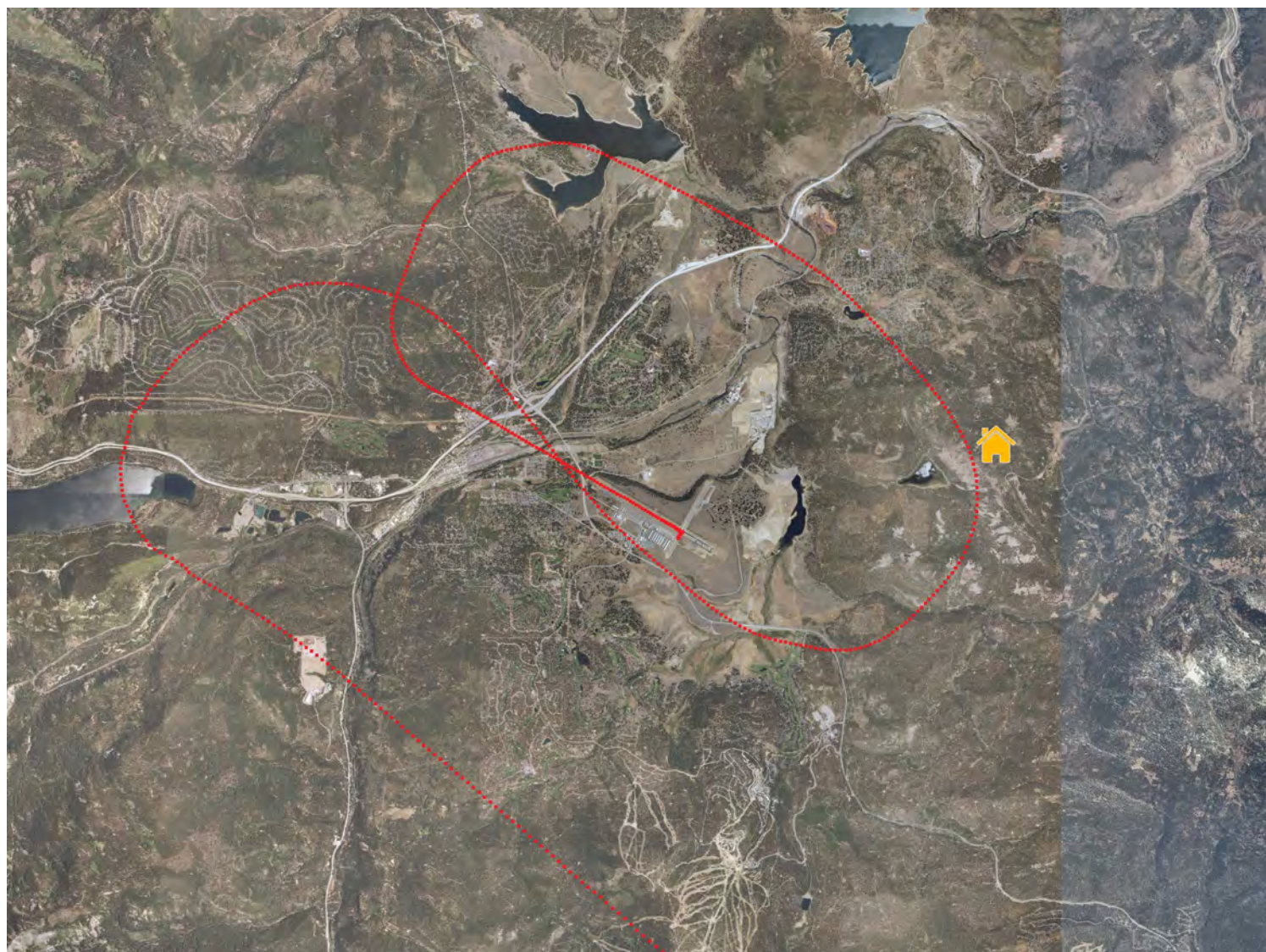


Challenger 300 arriving to Runway 02 is very unusual: aircraft of this size almost never land on Runway 02 and the sight from SR 267 must have been alarming. Runway 11/29 was closed due to construction and the aircraft sequenced into the flow of traffic without incident. Outreach will be made to operator based on flight through the glider activity area.

NOISE COMPLAINT REPORT

COMPLAINT ID: 54219
COMPLAINT TYPE: **Low**
OPERATION TYPE: Arrival
RUNWAY: **11**
A/C TYPE: C750

DATE AND TIME: Aug 26 2016, 10:05 AM
POINT OF CLOSEST APPROACH(PCA): 0.31 nm
ALTITUDE AT PCA: 7600 ft



Comment from Juniper Hills: "Loud plane just flew our house very low too"

Comment from Tahoe Donner (Location not shown on map): "Low flying jet over XXXXXXXXXX Ave"

Aircraft inbound from SSE in VMC. Citation 10 set up for 11 but had a traffic conflict so had to go around and flew through glider activity area and multiple residential areas (after initially setting up for right traffic to 11). Staff spoke to crew; it was first visit to TRK.

NOISE COMPLAINT REPORT

COMPLAINT ID: 54253

COMPLAINT TYPE: off course

OPERATION TYPE: Departure

RUNWAY: 29

A/C TYPE: SR22

DATE AND TIME: Aug 26 2016, 05:30 PM

POINT OF CLOSEST APPROACH(PCA): 0.17 nm

ALTITUDE AT PCA: 6800 ft



Only a track segment and not a clean match to camera image, but staff mailed letter to most likely subject, a Cirrus SR22 departing 29 in VMC with a slight overflight of Olympic Heights.

NOISE COMPLAINT REPORT

COMPLAINT ID: 54307

COMPLAINT TYPE: Low And Loud

OPERATION TYPE: Departure

RUNWAY: 29

A/C TYPE: PA32

DATE AND TIME: Aug 27 2016, 04:38 PM

POINT OF CLOSEST APPROACH(PCA): 0.09 nm

ALTITUDE AT PCA: 6300 ft



Piper Cherokee departed Runway 29 and circled for altitude over Martis Valley Estates twice then through glider activity area twice. Staff mailed letter to pilot.

NOISE COMPLAINT REPORT

COMPLAINT ID: 54331

COMPLAINT TYPE: Frequency

OPERATION TYPE: Touch N Go

RUNWAY: 29

A/C TYPE: C172 x 3

DATE AND TIME: Aug 28 2016, 10:05 AM

POINT OF CLOSEST APPROACH(PCA): 0.19 nm

ALTITUDE AT PCA: 6800 ft



Comment 1: "We have been trying to enjoy a nice morning on our back deck and the same plane has flown in circles and directly over our house about every 8 minutes... about 5 times now.. I dont understand why this person needs to fly A. so low and B. in circles over the exact same houses."

Comment 2: "Really trying to work with the noise guys but its the 7th time I have counted the SAME airplane doing circles over our homes. Its a joke! My cats don't even want to go outside. I guess the question is are there ANY rules at all or do the pilots just do whatever they want! Black body white wings with propeller. Obviously the airport is a beast that even you guys now have no control over. But a strong emphasis on some neighborhood respect is massively necessary! This is the Sierras not L.A. And I kind of get the feeling that most the people flying into this airport are not local tax payers - who fund the airport. Help! Update I am now listening to the 8th lap. UNBELIEVABLE! A little respect for the local neighborhoods would be greatly appreciated. And I am not even mentioning the airplane that I woke up to this morning at 6:25am."

Multiple aircraft (about 8 overflights total): a C172 doing pattern work at 6,700' instead of 7,000'. Staff met with pilot. Another C172 doing pattern work at normal elevation (5 times in 1 hour). Emailed pilot request for mixed use of runways. Local training C172 made one overflight at normal elevation. Frequency of operations looks to be the underlying issue here. Saturday morning between 9:05 and 10:30 am. Not all tracks/residents depicted here.

NOISE COMPLAINT REPORT

COMPLAINT ID: 54388

COMPLAINT TYPE: Frequent

OPERATION TYPE: Departure

RUNWAY: **29**

A/C TYPE: **P210**

DATE AND TIME: Aug 28 2016, 03:48 PM

POINT OF CLOSEST APPROACH(PCA): 0.08 nm

ALTITUDE AT PCA: 6300 ft



Comment from west side of Olympic Heights that the aircraft was over residential area. Investigation determined there was residential area overflight. Emailed operator.

NOISE COMPLAINT REPORT

COMPLAINT ID: 55265

COMPLAINT TYPE: Loud Disturbance

OPERATION TYPE: Departure

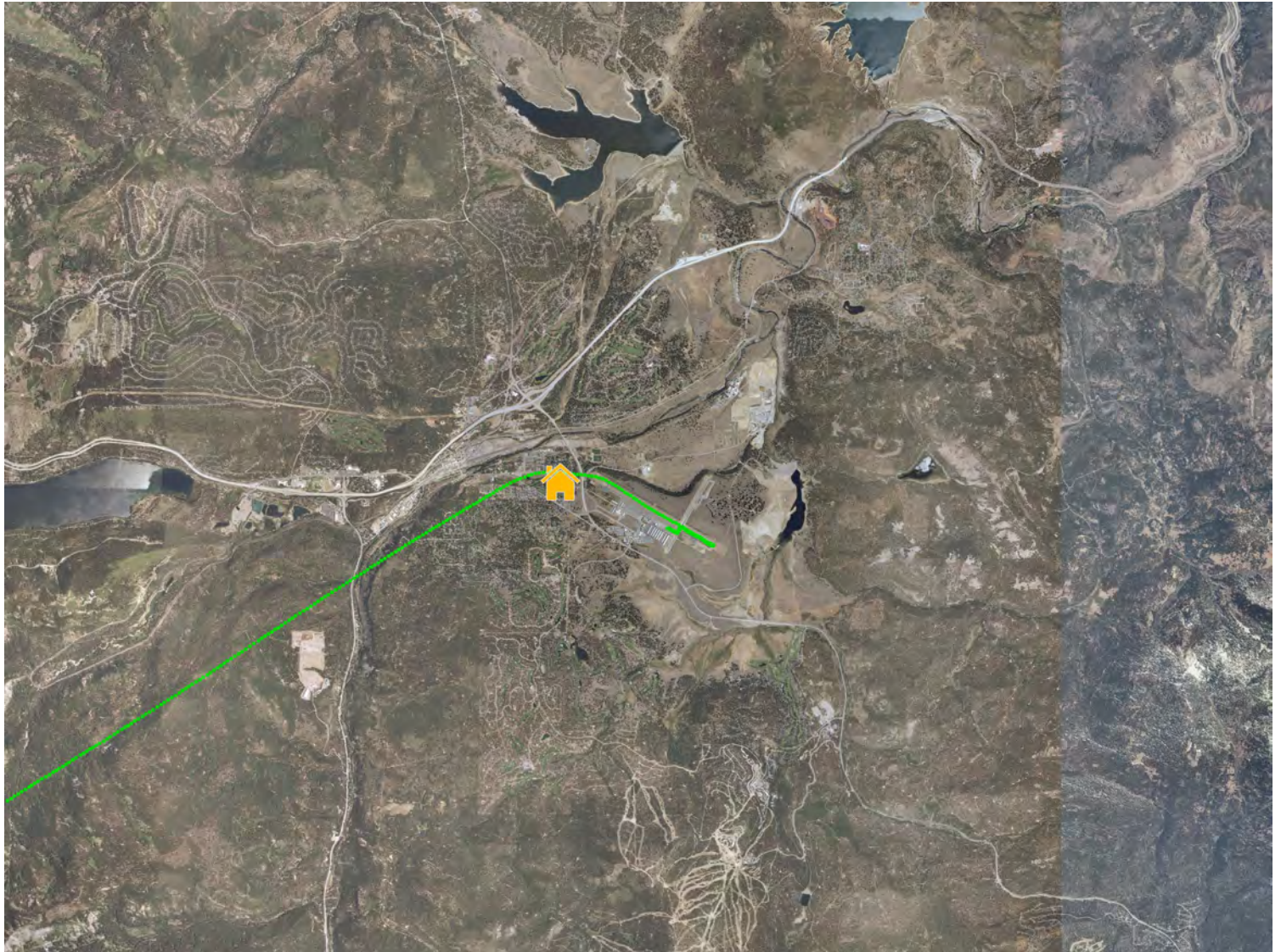
RUNWAY: 29

A/C TYPE: TBM7

DATE AND TIME: Aug 28 2016, 07:09 PM

POINT OF CLOSEST APPROACH(PCA): 0.18 nm

ALTITUDE AT PCA: 6700 ft



TBM700 departed 29 and made a quick left. Emailed operator.

NOISE COMPLAINT REPORT

COMPLAINT ID: 55543

COMPLAINT TYPE: Loud Disturbance

OPERATION TYPE: Departure

RUNWAY: 20

A/C TYPE: C182

DATE AND TIME: Aug 28 2016, 06:25 AM

POINT OF CLOSEST APPROACH(PCA): 0.64 nm

ALTITUDE AT PCA: 7200 ft



Comment from Sierra Meadows that an early morning departure woke the resident up.

Additional comment about repeated overflight by aircraft doing pattern work between 9:30 & 10:30. Emailed commenter follow up after pilot outreach was completed.

A Cessna Skylane departed Runway 20 and followed the NAP, making a climbing left 270 before flying outbound to the west. Bay area flight school operating aircraft has been contacted.

NOISE COMPLAINT REPORT

COMPLAINT ID: 55263

COMPLAINT TYPE: **Low & Loud**

OPERATION TYPE: Arrival

RUNWAY: **29**

A/C TYPE: **GLF4**

DATE AND TIME: Aug 29 2016, 11:02 AM

POINT OF CLOSEST APPROACH(PCA): 0.21 nm

ALTITUDE AT PCA: 7100 ft



Gulfstream 4 set up for a 29 arrival from the south traffic conflict with C172 already on downwind so made a right 360 then had to go around since they couldn't slow down enough when C172 landed. Sequencing problem likely would have been resolved with a tower. Emailed commenter. Staff spoke to pilot.

NOISE COMPLAINT REPORT

COMPLAINT ID: 54621

COMPLAINT TYPE: Off Course

OPERATION TYPE: Departure

RUNWAY: 29

A/C TYPE: PC12

DATE AND TIME: Aug 29 2016, 04:32 PM

POINT OF CLOSEST APPROACH(PCA): 0.1 nm

ALTITUDE AT PCA: 6500 ft



Arrival and departure captured together here. Pilatus PC12 generated one comment from Olympic Heights on departure from Runway 29. 600'agl when over the western end of the residential area. Staff spoke to operator.

NOISE COMPLAINT REPORT

COMPLAINT ID: 54737

COMPLAINT TYPE: Low And Loud

OPERATION TYPE: Departure

RUNWAY: **11**

A/C TYPE: **PA18**

DATE AND TIME: Aug 31 2016, 06:50 AM

POINT OF CLOSEST APPROACH(PCA): 0.28 nm

ALTITUDE AT PCA: 6900 ft



Comment 1: "at 6:50 am, a small aricraft flew directly over my home very low and LOUD- please speak to the pilot! this is way too early and he/she should take the fly quiet route, not over homes, especially so DAMN EARLY"

Comment 2 : "Plane was flying low over Glenshire."

2 Comments received on Piper Cub departure from Runway 11. Emailed both commenters and made contact with pilot.

NOISE COMPLAINT REPORT

COMPLAINT ID: 54895

COMPLAINT TYPE: Low And Loud

OPERATION TYPE: Departure

RUNWAY: 20

A/C TYPE: PA46

DATE AND TIME: Aug 31 2016, 04:16 PM

POINT OF CLOSEST APPROACH(PCA): 0.15 nm

ALTITUDE AT PCA: 6800 ft



Comment: "outbound retractable gear plane buzzed house"

Piper Malibu departed 20 VFR - poor performance on a hot day putting the aircraft low over residential areas. Staff spoke to pilot/owner about alternate departures and better climb performance for future ops and met with commenter.