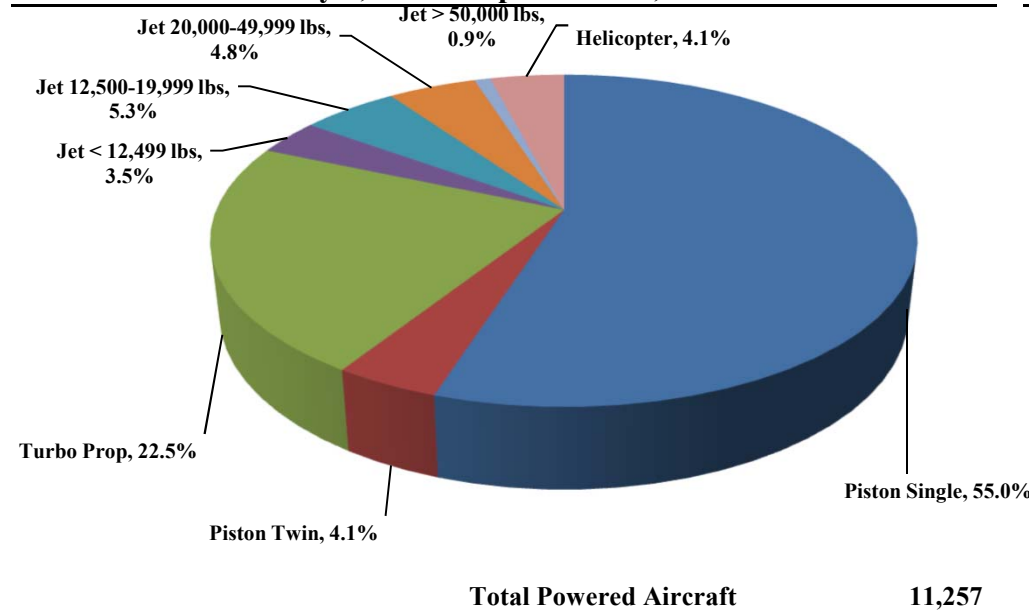




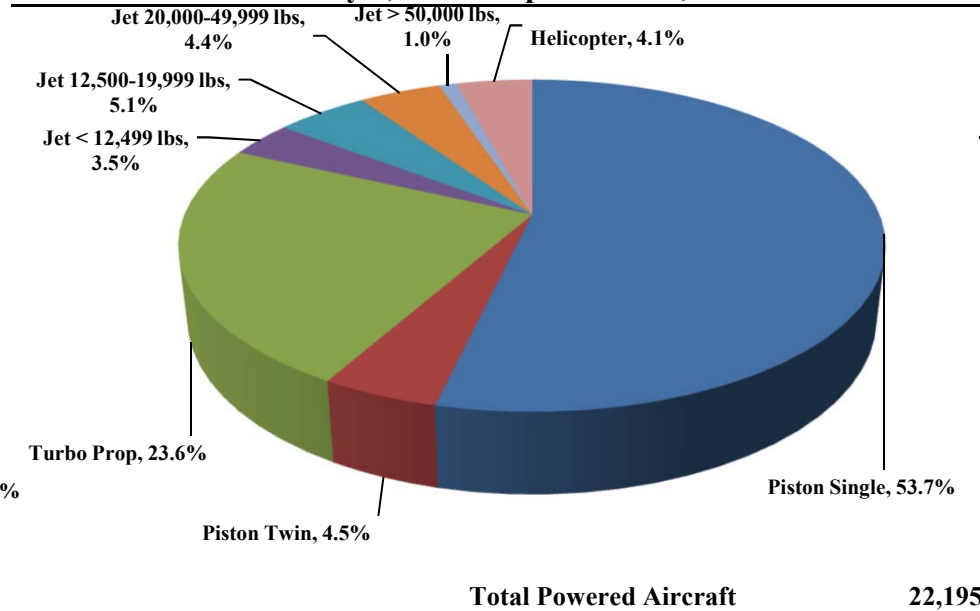
TRUCKEE TAHOE AIRPORT DISTRICT Operations and Community Comment Report as of 9/30/16



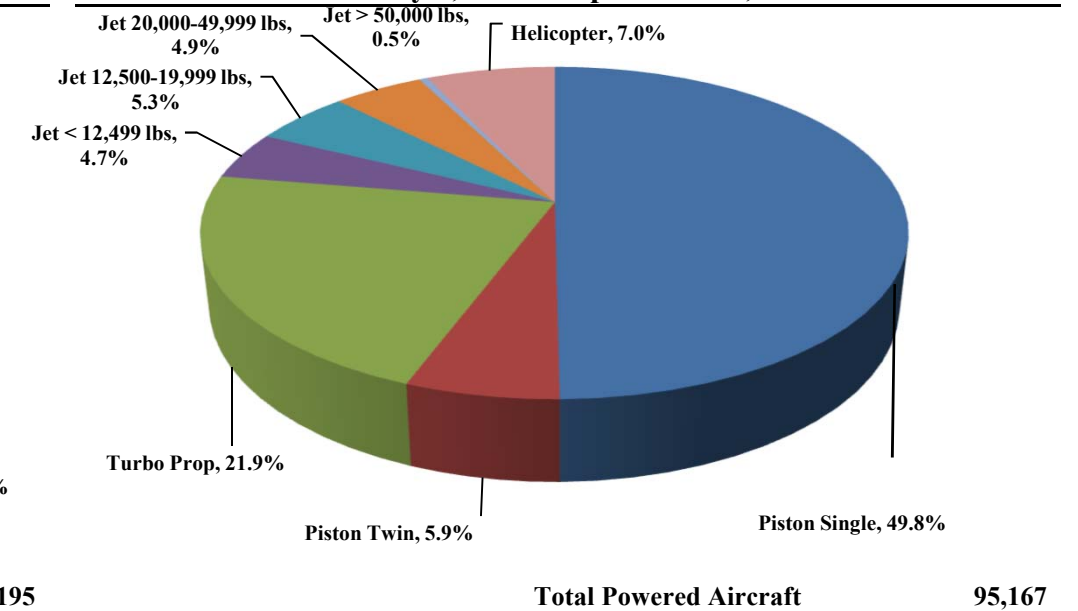
Current Quarter | Operations
July 1, 2016 - September 30, 2016



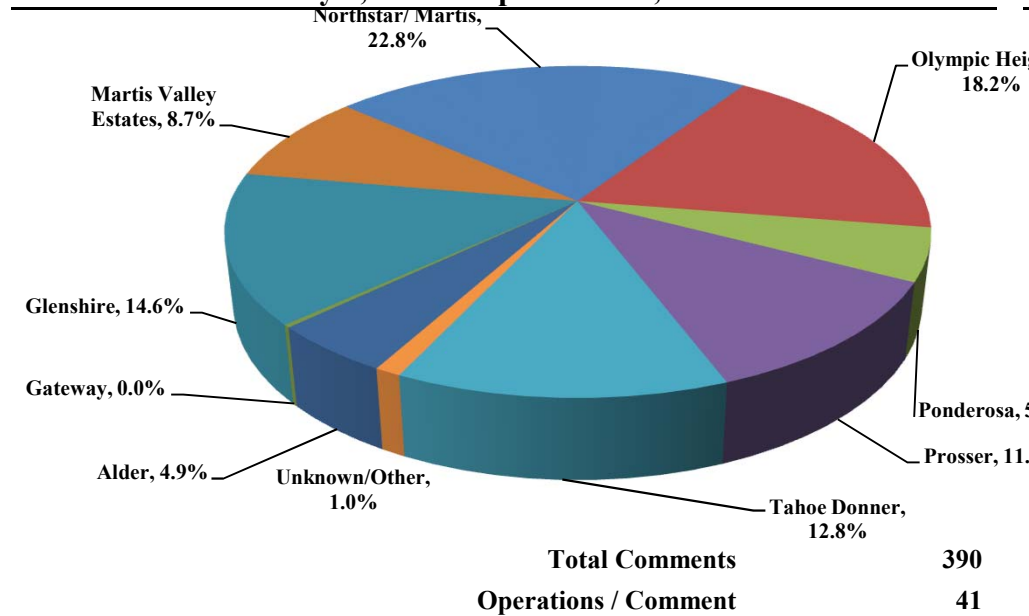
Year-to-Date | Operations
January 1, 2016 - September 30, 2016



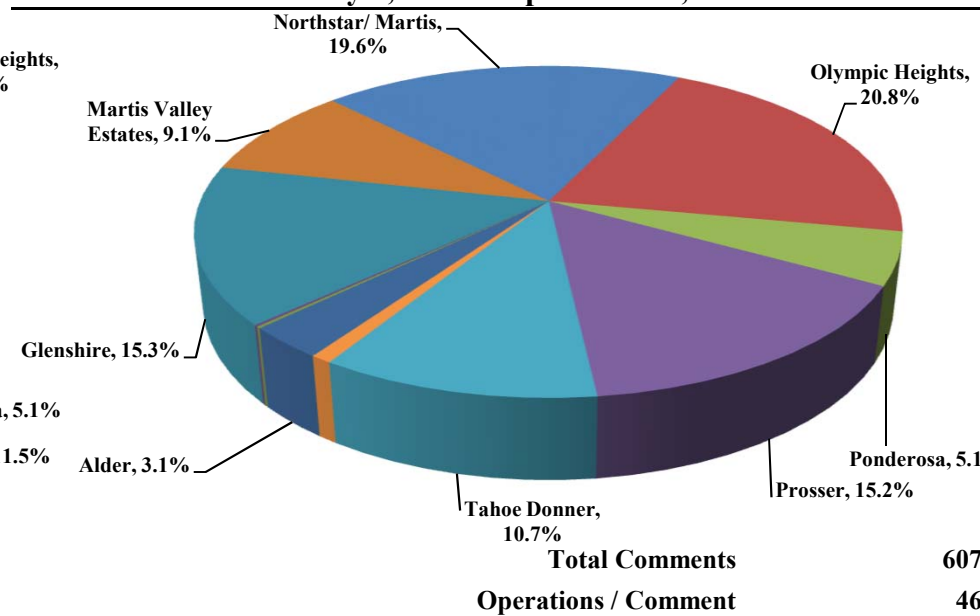
Historic | Operations
January 1, 2012 - September 30, 2016



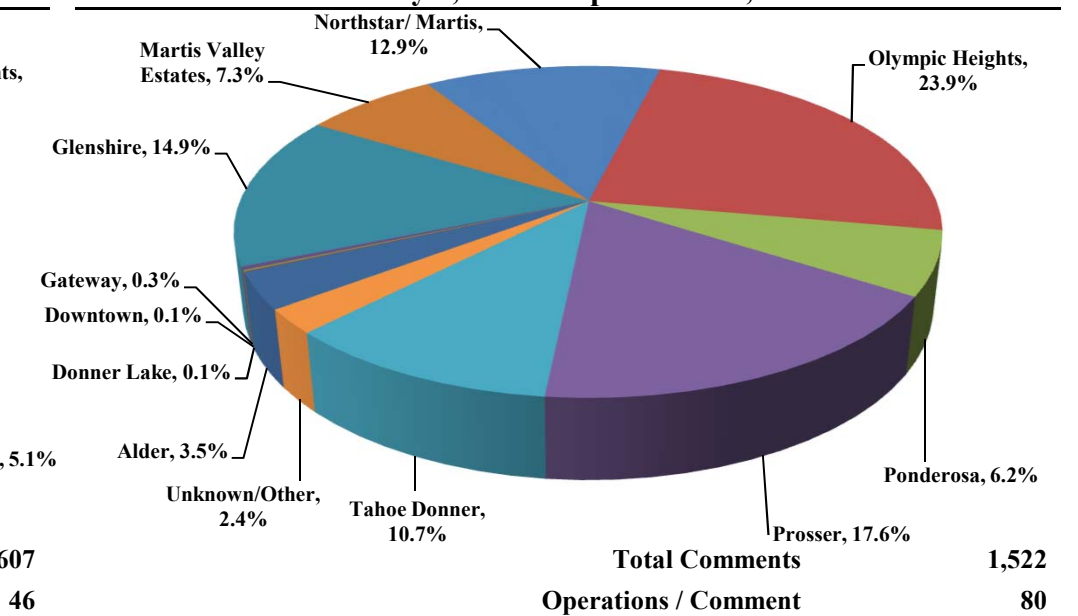
Current Quarter | Comments
July 1, 2016 - September 30, 2016



Year-to-Date | Comments
January 1, 2016 - September 30, 2016



Historic | Comments
January 1, 2012 - September 30, 2016



Notes

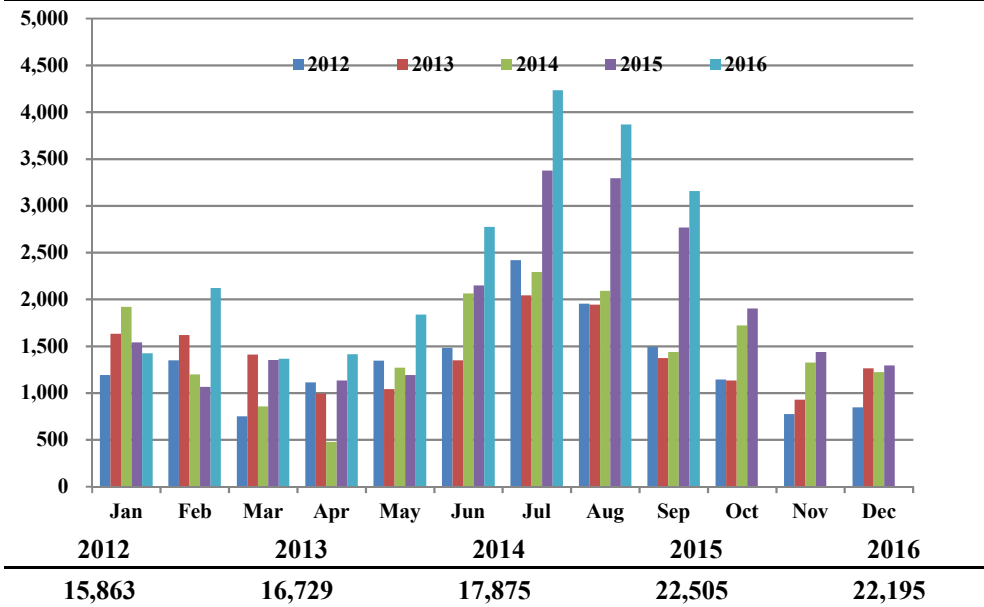
April 2014 - Launched new TTAD Website with 'Report Noise' link.
Operations graphs above use Total Powered Aircraft. Glider operations are not included.
Jets > 50,000lbs subcategory was added in Q1 2015. Reporting and analysis prior to 2015 is not included.



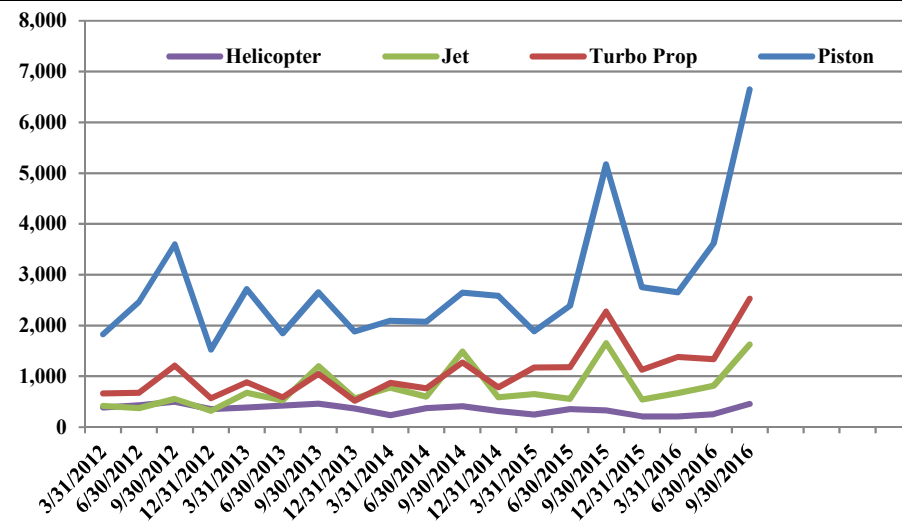
TRUCKEE TAHOE AIRPORT DISTRICT Operations and Community Comment Report as of 9/30/16



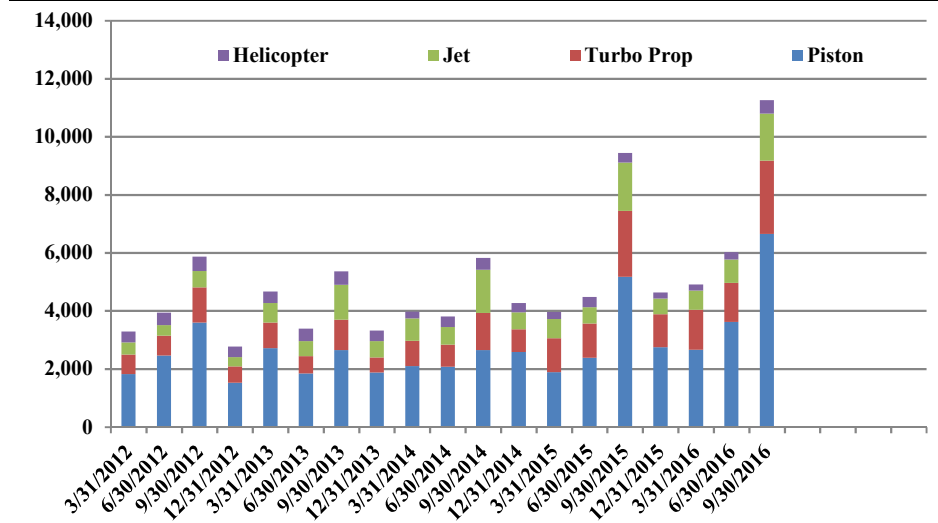
Operations | by Month by Year
January 1, 2012 - September 30, 2016



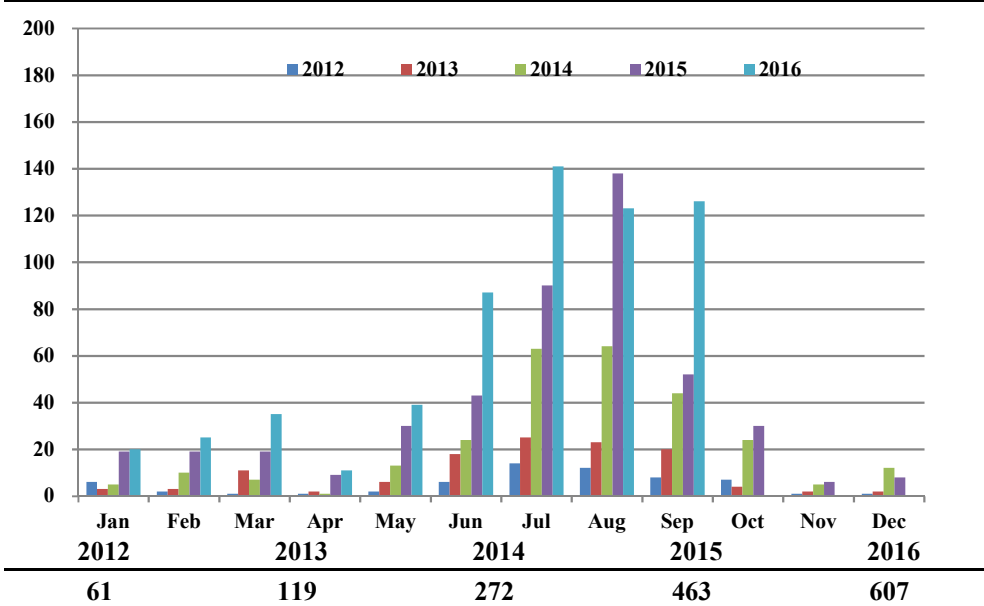
Operations | by Type by Quarter
January 1, 2012 - September 30, 2016



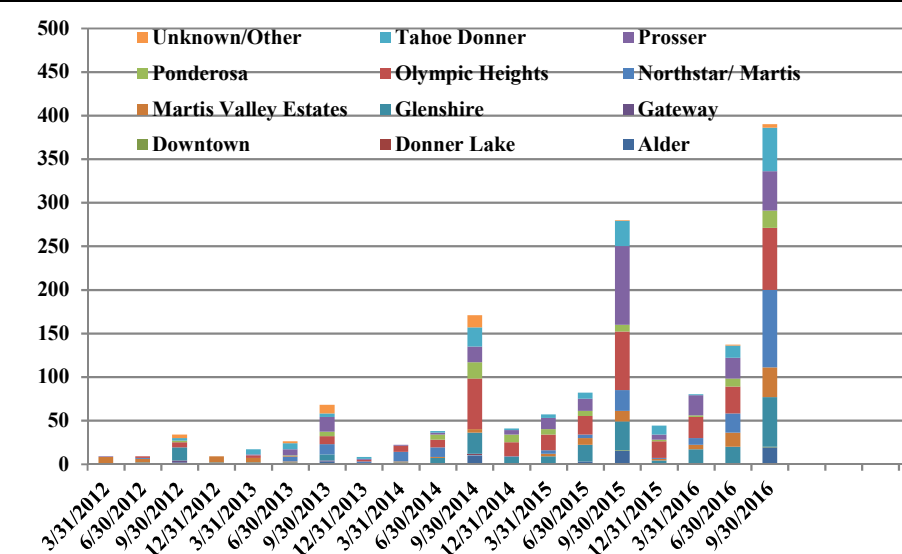
Operations | Mix by Type by Quarter
January 1, 2012 - September 30, 2016



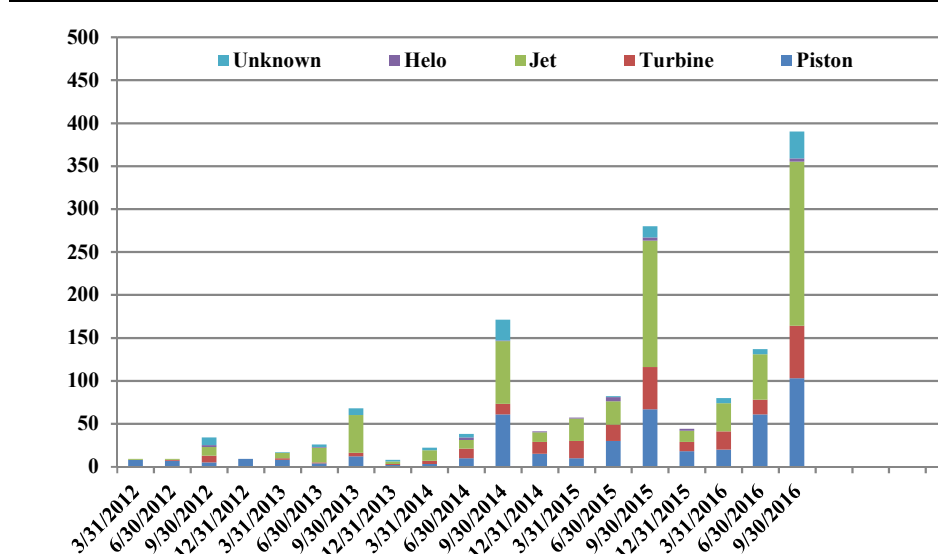
Comments | by Month by Year
January 1, 2012 - September 30, 2016



Comments | by Locale by Quarter
January 1, 2012 - September 30, 2016



Comments | by Type by Quarter
January 1, 2012 - September 30, 2016



Notes

April 2014 - Launched new TTAD Website with 'Report Noise' link.
 Operations graphs above use Total Powered Aircraft. Glider operations are not included.
 Jets > 50,000lbs subcategory was added in Q1 2015. Reporting and analysis prior to 2015 is not included.



Truckee Tahoe Airport District Operations and Community Comment Report as of 9/30/16



Operations Detail	OPERATIONS										Year over Year				Notes
	2015				2016				difference	%	10/1/14-9/30/15	10/1/15-9/30/16	difference	%	
	Jul	Aug	Sep	Q3	Jul	Aug	Sep	Q3			10/1/14-9/30/15	10/1/15-9/30/16			
Piston Single	1,523	1,595	1,476	4,594	2,238	2,217	1,734	6,189	1,595	34.72%	8,246	12,843	4,597	55.75%	
Piston Twin	215	203	163	581	190	138	130	458	(123)	(21.17%)	1,258	1,358	100	7.95%	
Turbo Prop	861	789	624	2,274	951	859	718	2,528	254	11.17%	4,409	6,123	1,714	38.88%	
Jet < 12,499 lbs	172	112	131	415	181	112	97	390	(25)	(6.02%)	1,036	934	(102)	(9.85%)	
Jet 12,500-19,999 lbs	247	215	160	622	247	192	157	596	(26)	(4.18%)	1,089	1,384	295	27.09%	
Jet 20,000-49,999 lbs	195	198	110	503	238	183	121	542	39	7.75%	1,073	1,104	31	2.89%	
Jet > 50,000 lbs	58	49	8	115	49	27	22	98	(17)	(14.78%)	87	259	172	197.70%	
Helicopter	103	133	95	331	140	139	177	456	125	37.76%	1,323	1,005	(318)	(24.04%)	
Total Powered Aircraft	3,374	3,294	2,767	9,435	4,234	3,867	3,156	11,257	1,822	19.31%	18,521	25,010	6,489	35.04%	
Gliders	1,840	1,432	836	4,108	2,080	1,612	872	4,564	456	11.10%	5,066	5,324	258	5.09%	
Total Operations	5,214	4,726	3,603	13,543	6,314	5,479	4,028	15,821	2,278	16.82%	23,587	30,334	6,747	28.60%	

Comment Location	COMMENTS										Year over Year				Notes
	2015				2016				difference	%	10/1/14-9/30/15	10/1/15-9/30/16	difference	%	
	Jul	Aug	Sep	Q3	Jul	Aug	Sep	Q3			10/1/14-9/30/15	10/1/15-9/30/16			
Alder	11	3	1	15	16	3	-	19	4	26.67%	13	15	2	15.38%	
Donner Lake	-	-	-	-	-	-	-	-	-	0.00%	1	-	(1)	(100.00%)	
Downtown	-	-	1	1	1	-	-	1	-	0.00%	-	1	1	100.00%	
Gateway	-	-	-	-	-	-	-	-	-	0.00%	1	1	-	0.00%	
Glenshire	12	15	6	33	17	14	26	57	24	72.73%	60	73	13	21.67%	
Martis Valley Estates	6	3	3	12	9	13	12	34	22	183.33%	15	35	20	133.33%	
Northstar/ Martis	11	11	2	24	36	25	28	89	65	270.83%	9	55	46	511.11%	
Olympic Heights	20	35	12	67	29	24	18	71	4	5.97%	113	141	28	24.78%	
Ponderosa	2	4	2	8	4	11	5	20	12	150.00%	40	21	(19)	(47.50%)	
Prosser	16	57	17	90	14	12	19	45	(45)	(50.00%)	50	143	93	186.00%	
Tahoe Donner	11	10	8	29	15	21	14	50	21	72.41%	35	54	19	54.29%	
Unknown/Other	1	-	-	1	-	-	4	4	3	300.00%	14	2	(12)	(85.71%)	
Total Comments	90	138	52	280	141	123	126	390	110	39.29%	351	541	190	54.13%	-
Comment Type															
Piston	22	29	16	67	28	38	37	103	36	53.73%	116	166	50	43.10%	
Turbine	18	21	10	49	26	13	22	61	12	24.49%	65	98	33	50.77%	
Jet	47	78	22	147	73	64	54	191	44	29.93%	137	246	109	79.56%	
Helo	2	2	-	4	2	1	1	4	-	0.00%	8	6	(2)	(25.00%)	
Unknown	1	8	4	13	12	7	12	31	18	138.46%	25	25	-	0.00%	
Total Comments	90	138	52	280	141	123	126	390	110	39.29%	351	541	190	54.13%	-
Operations per Comment				48				41	(8)	(16.13%)	67	56	(11)	(16.56%)	-