

# NOISE COMPLAINT REPORT

COMPLAINT ID: 55787  
COMPLAINT TYPE: Low  
OPERATION TYPE: Departure  
RUNWAY: 20  
A/C TYPE: PC12

DATE AND TIME: Oct 02 2016, 11:12 AM  
POINT OF CLOSEST APPROACH(PCA): 0.51 nm  
ALTITUDE AT PCA: 9000 ft



Comment: "single prop. low flying over home."

PC12 Departed 20 made climbing left 180 turn to the north. PCA 9000'. Pilot flew into the glider area. Glider season is over however skydivers were in the area. Emailed company.



# NOISE COMPLAINT REPORT

COMPLAINT ID: 55805

COMPLAINT TYPE: Low And Loud

OPERATION TYPE: Departure

RUNWAY: 20

A/C TYPE: P28B

DATE AND TIME: Oct 06 2016, 03:55 PM

POINT OF CLOSEST APPROACH(PCA): 0.14 nm

ALTITUDE AT PCA: 6700 ft



Comment: "Hi Mike, I believe I got a direct hit at 3;56pm today south to north over house, little low wing white prop. Hope I am right, best always"

Piper Cherokee looks like flight training. Runway 11/29 closed and aircraft made left traffic to 20 instead of right. Outreach in progress.



# NOISE COMPLAINT REPORT

COMPLAINT ID: 55810

COMPLAINT TYPE: Low And Loud

OPERATION TYPE: Arrival

RUNWAY: 29

A/C TYPE: PC12

DATE AND TIME: Oct 07 2016, 12:05 PM

POINT OF CLOSEST APPROACH(PCA): 0.22 nm

ALTITUDE AT PCA: 6700 ft



Comment "Hi Mike, sorry one very low and over house on take off, 12:05pm east to west curving over me. White/blue surf air? Thanks."

PC12 arrival to 29. PCA 6,700'. Flew over 29 then made left traffic for 29 - should have extended to bypass then I-80. Non-Compliant. Emailed operator.



# NOISE COMPLAINT REPORT

COMPLAINT ID: 55857  
COMPLAINT TYPE: Low  
OPERATION TYPE: Arrival  
RUNWAY: 20  
A/C TYPE: C525

DATE AND TIME: Oct 13 2016, 03:20 PM  
POINT OF CLOSEST APPROACH(PCA): 0.13 nm  
ALTITUDE AT PCA: 6600 ft



Comment: "tree top flying over home" C525 Arrival to 20. Flew runway heading to 20. PCA 6600' Spoke with pilot and asked him to fly a little west of runway heading. He said the winds were really strong coming out of the west- blowing him over Glenshire. He comes in all the time - next time he comes in we will sit down together and discuss the procedures. KG



# NOISE COMPLAINT REPORT

COMPLAINT ID: 55891

COMPLAINT TYPE: **Off Course**

OPERATION TYPE: Departure

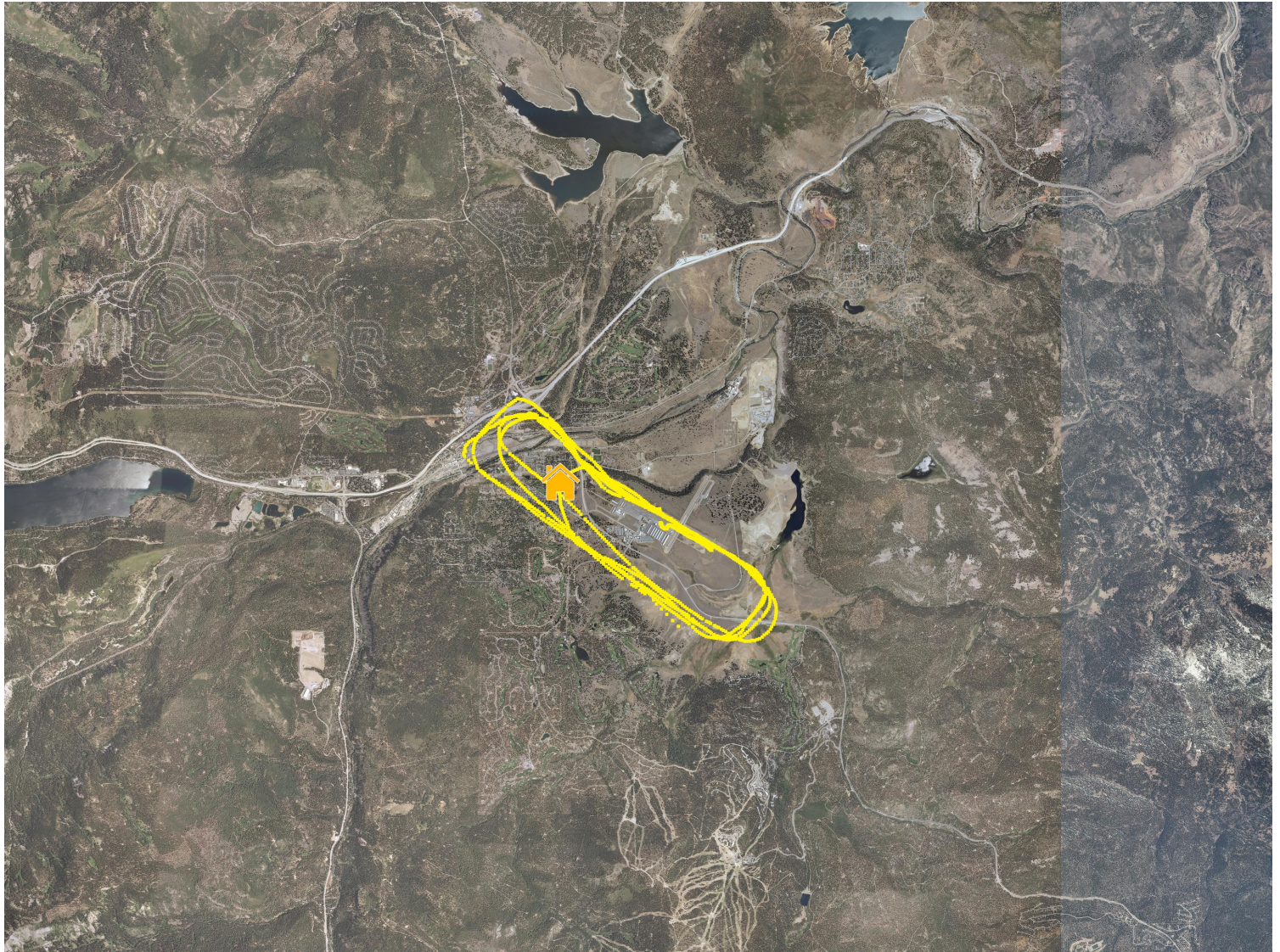
RUNWAY: **29**

A/C TYPE: **C172**

DATE AND TIME: Oct 18 2016, 01:40 PM

POINT OF CLOSEST APPROACH(PCA): 0.2 nm

ALTITUDE AT PCA: 7100 ft



C172 doing patterns on 29 in calm winds. Overall NAP's were followed save 2 or 3 instances. Flight training, local aircraft. Staff spoke with pilot and CFI who stated and verified aircraft was above pattern altitude during any non-standard maneuvers. Good example of possible need for an altitude threshold of compliance.



# NOISE COMPLAINT REPORT

COMPLAINT ID: 58174

COMPLAINT TYPE: Low

OPERATION TYPE: Departure

RUNWAY: 29

A/C TYPE: PC12

DATE AND TIME: Oct 20 2016, 04:40 PM

POINT OF CLOSEST APPROACH(PCA): 0.13 nm

ALTITUDE AT PCA: 6600 ft



PC12 departed 29 in VMC and made a unusual downwind departure over Northstar ski resort. Comment came from Olympic Heights which the departure overflew as well. Staff emailed operator.



# NOISE COMPLAINT REPORT

COMPLAINT ID: 58151

COMPLAINT TYPE: Low And Loud

OPERATION TYPE: Arrival

RUNWAY: 20

A/C TYPE: C501

DATE AND TIME: Oct 23 2016, 12:02 PM

POINT OF CLOSEST APPROACH(PCA): 0.4 nm

ALTITUDE AT PCA: 8600 ft



Comment: "taking off."

Cessna Citation C501 arrival to 20. 8,600 PCA'. Aircraft came in from SW, flew over airport then adjusting for winds/traffic, decided to land Runway 20. Non-compliant, reached out to operator.



# NOISE COMPLAINT REPORT

COMPLAINT ID: 58157

COMPLAINT TYPE: Off Course

OPERATION TYPE: Departure

RUNWAY: 29

A/C TYPE: PC12

DATE AND TIME: Oct 23 2016, 05:19 PM

POINT OF CLOSEST APPROACH(PCA): 0.23 nm

ALTITUDE AT PCA: 7200 ft



Comment from Olympic Heights resident close to Bypass Bridge: "Oop" which means out of pattern.

PC 12 Departing 29. 7200 PCA. Strong wind from S at the time. KG spoke with pilot on the ramp - a regular who is very familiar with NAP's. Non Compliant



# NOISE COMPLAINT REPORT

COMPLAINT ID: 58158

COMPLAINT TYPE: Loud Disturbance

OPERATION TYPE: Departure

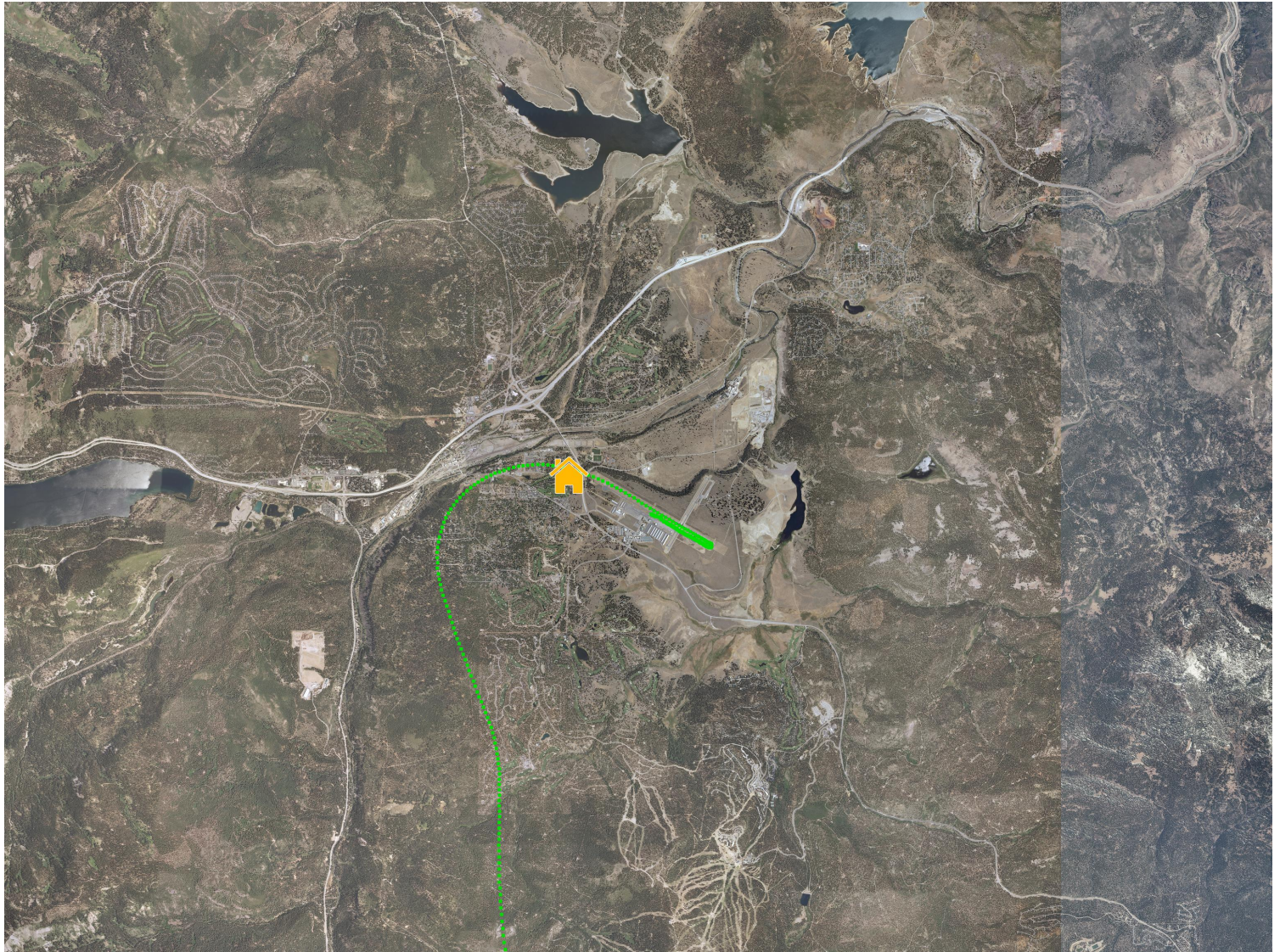
RUNWAY: 29

A/C TYPE: E55P

DATE AND TIME: Oct 25 2016, 01:10 PM

POINT OF CLOSEST APPROACH(PCA): 0.16 nm

ALTITUDE AT PCA: 6700 ft



Comment: "Jet departure, turned left over the house instead of right over the bypass increasing intensity and duration of noise. "

Phenom 300 departed Runway 29. PCA 6,700' then a left turn after rotation. Non-compliant, will reach out to operator.