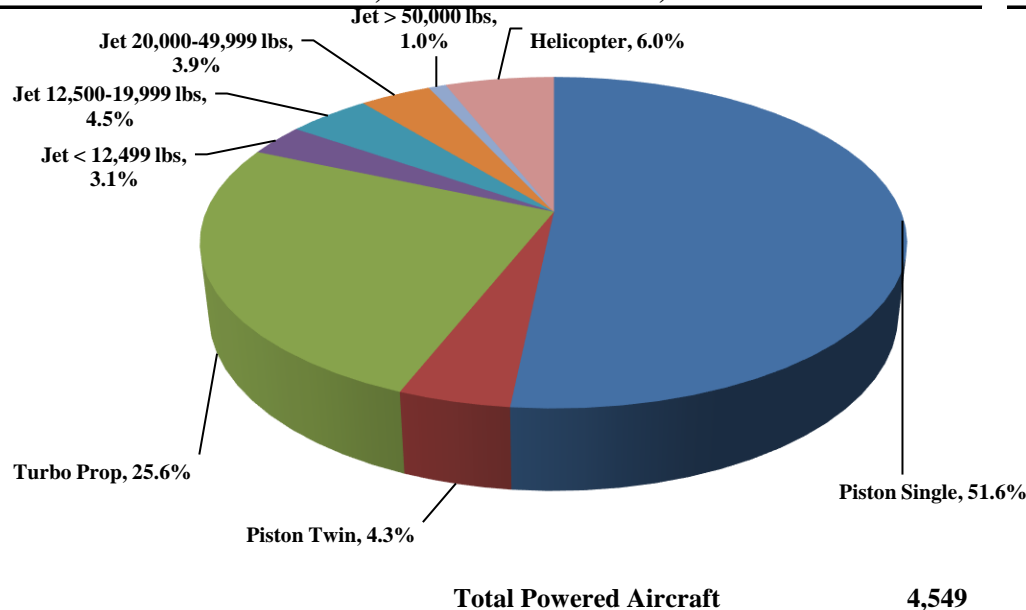




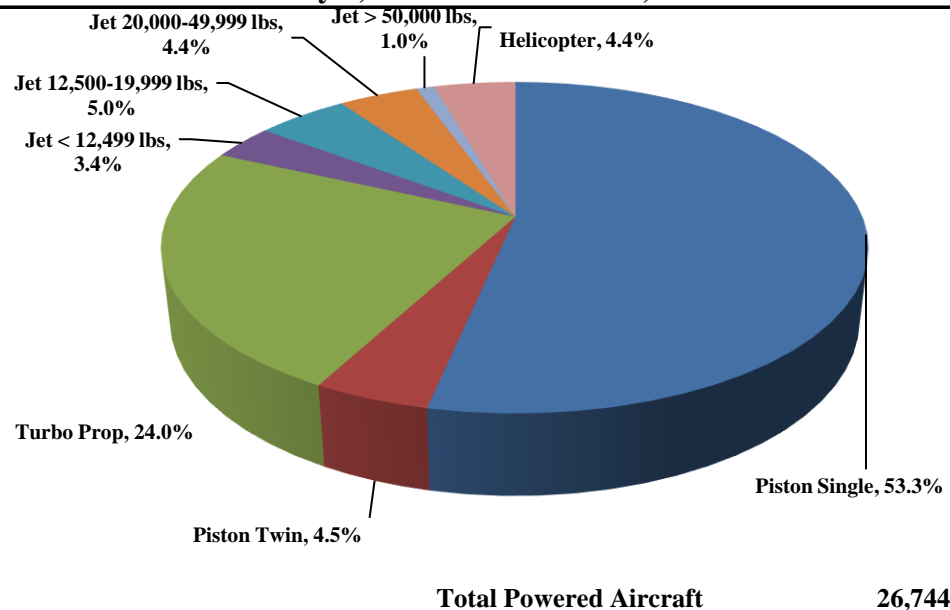
TRUCKEE TAHOE AIRPORT DISTRICT Operations and Community Comment Report as of 12/31/16



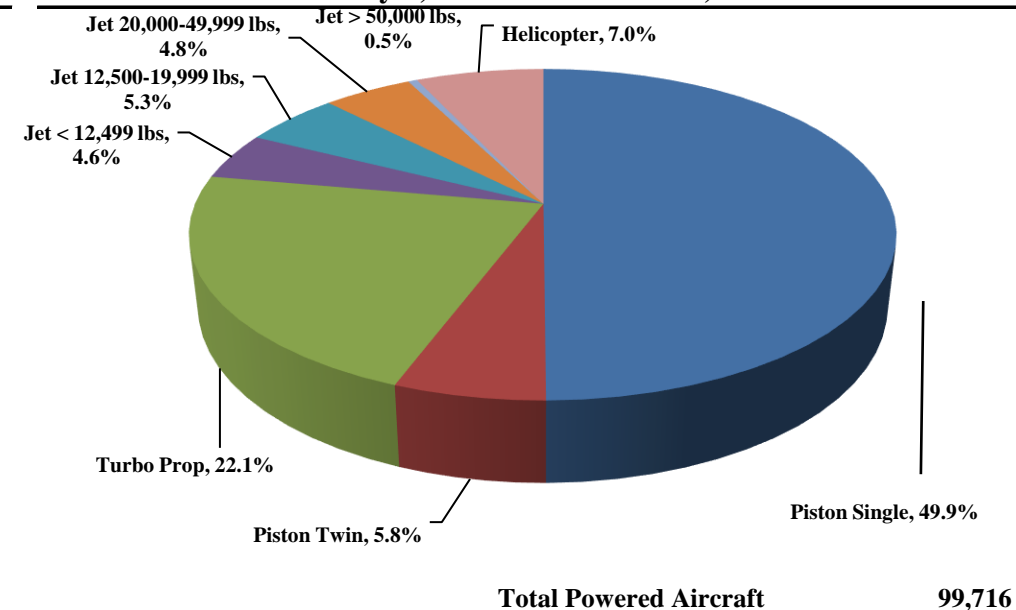
Current Quarter | Operations
October 1, 2016 - December 31, 2016



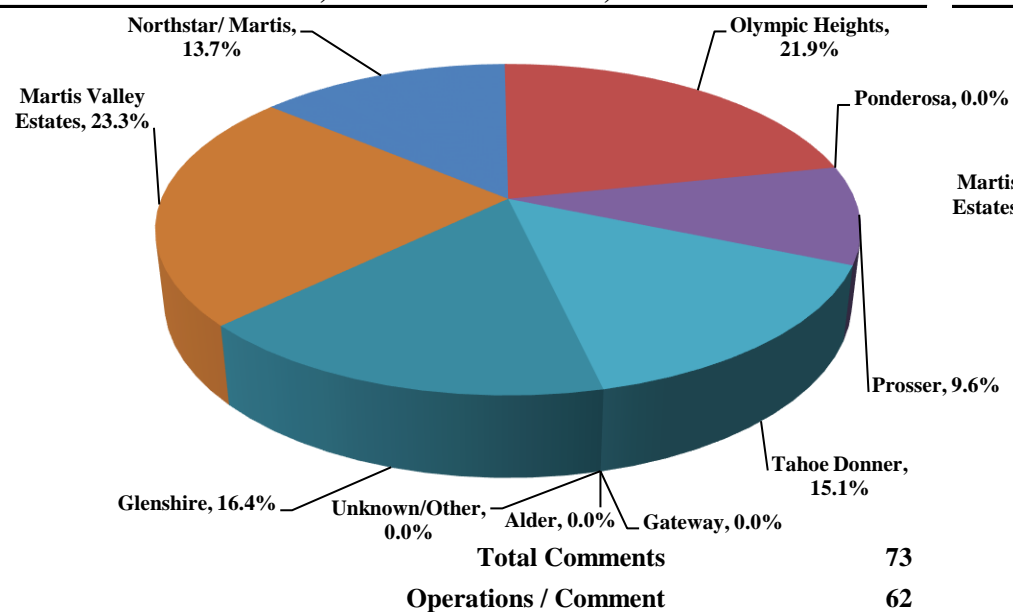
Year-to-Date | Operations
January 1, 2016 - December 31, 2016



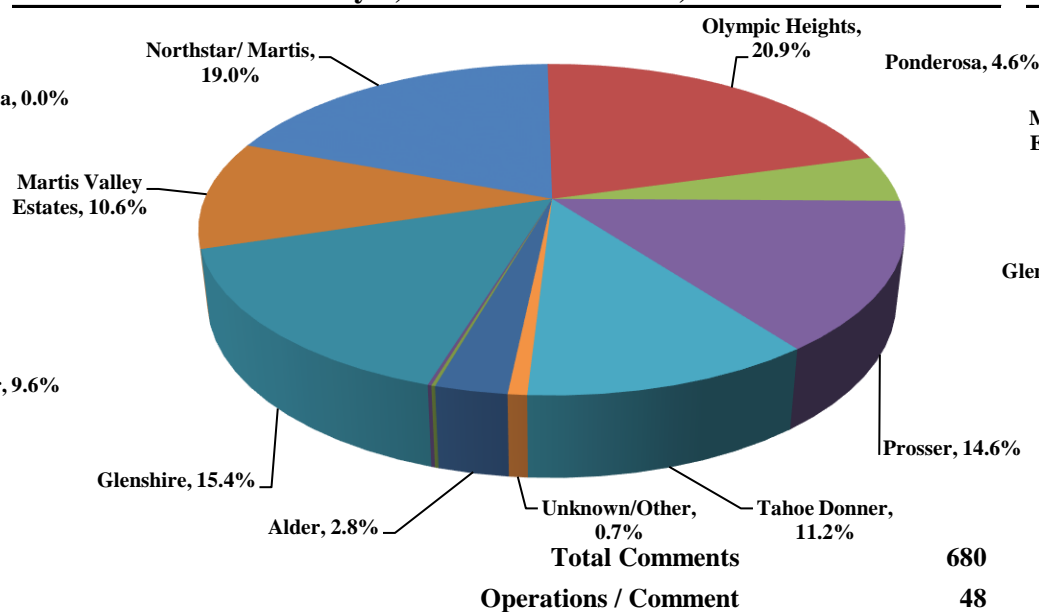
Historic | Operations
January 1, 2012 - December 31, 2016



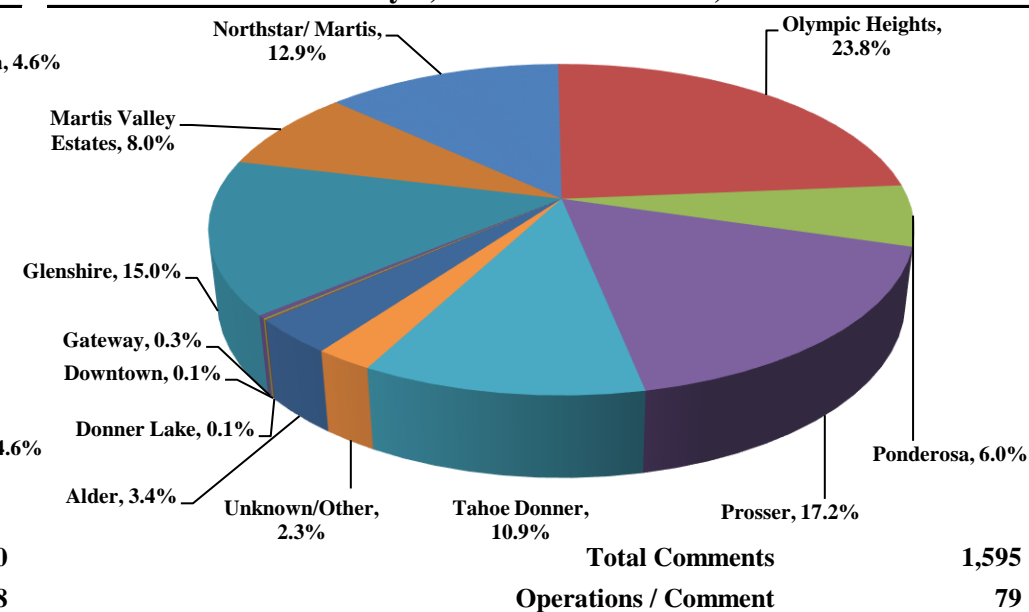
Current Quarter | Comments
October 1, 2016 - December 31, 2016



Year-to-Date | Comments
January 1, 2016 - December 31, 2016



Historic | Comments
January 1, 2012 - December 31, 2016



Notes

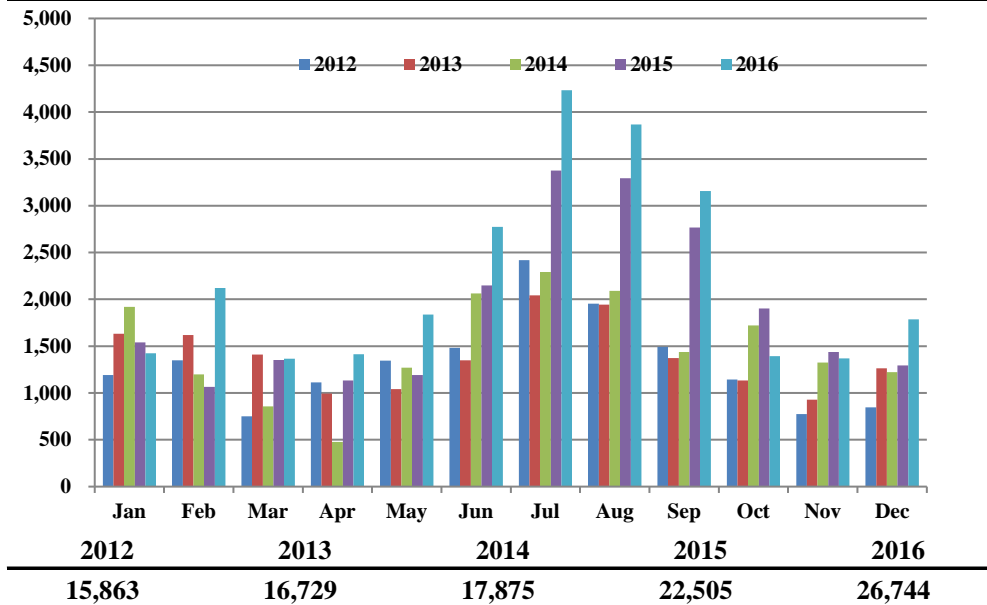
April 2014 - Launched new TTAD Website with 'Report Noise' link.
Operations graphs above use Total Powered Aircraft. Glider operations are not included.
Jets > 50,000lbs subcategory was added in Q1 2015. Reporting and analysis prior to 2015 is not included.



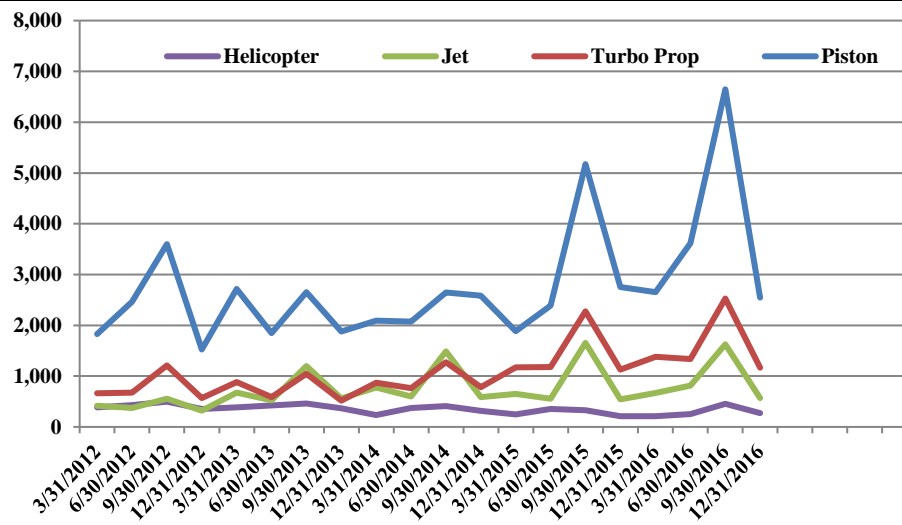
TRUCKEE TAHOE AIRPORT DISTRICT Operations and Community Comment Report as of 12/31/16



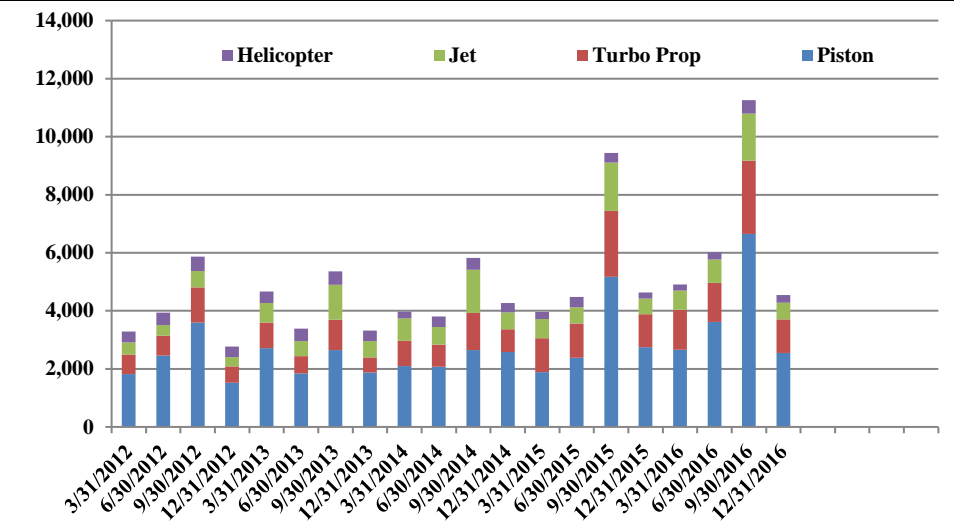
Operations | by Month by Year
January 1, 2012 - December 31, 2016



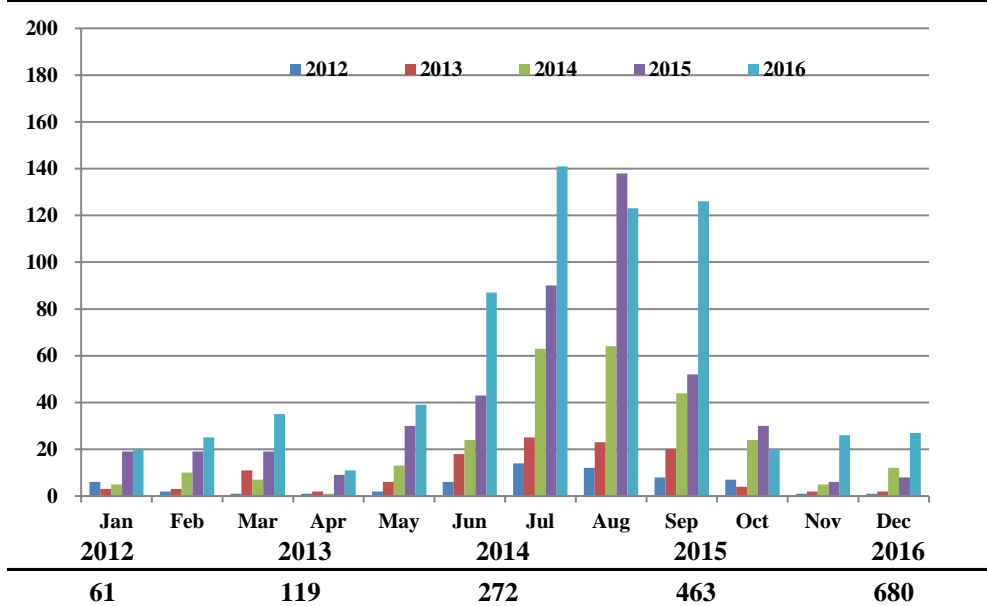
Operations | by Type by Quarter
January 1, 2012 - December 31, 2016



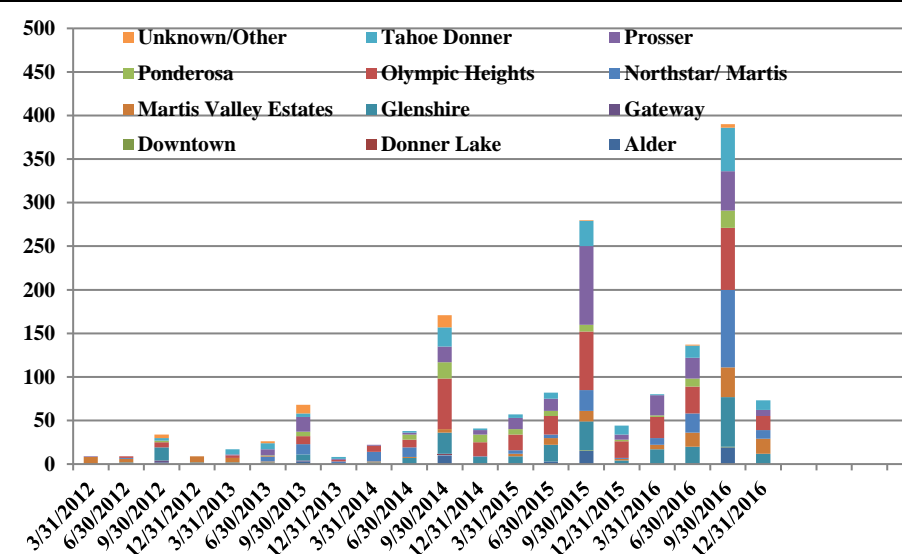
Operations | Mix by Type by Quarter
January 1, 2012 - December 31, 2016



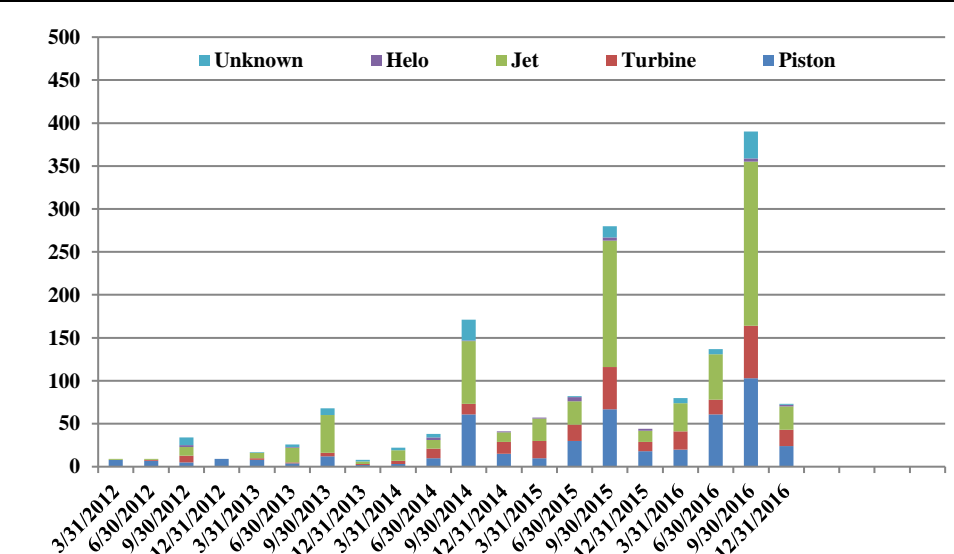
Comments | by Month by Year
January 1, 2012 - December 31, 2016



Comments | by Locale by Quarter
January 1, 2012 - December 31, 2016



Comments | by Type by Quarter
January 1, 2012 - December 31, 2016



Notes

April 2014 - Launched new TTAD Website with 'Report Noise' link.
Operations graphs above use Total Powered Aircraft. Glider operations are not included.
Jets > 50,000lbs subcategory was added in Q1 2015. Reporting and analysis prior to 2015 is not included.



Truckee Tahoe Airport District Operations and Community Comment Report as of 12/31/16



	OPERATIONS										Year over Year				Notes				
	2015				2016				difference	%	1/1/15-12/31/15	1/1/16-12/31/16	difference	%					
	Oct	Nov	Dec	Q4	Oct	Nov	Dec	Q4			1/1/15-12/31/15	1/1/16-12/31/16							
Operations Detail																			
Piston Single	1,148	871	506	2,525	728	744	877	2,349	(176)	(6.97%)	10,676	14,262	3,586	33.59%					
Piston Twin	87	71	69	227	68	60	69	197	(30)	(13.22%)	1,524	1,205	(319)	(20.93%)					
Turbo Prop	360	318	451	1,129	372	359	434	1,165	36	3.19%	5,756	6,413	657	11.41%					
Jet < 12,499 lbs	54	29	50	133	34	38	70	142	9	6.77%	924	918	(6)	(0.65%)					
Jet 12,500-19,999 lbs	100	48	83	231	59	53	92	204	(27)	(11.69%)	1,290	1,331	41	3.18%					
Jet 20,000-49,999 lbs	52	33	71	156	54	36	87	177	21	13.46%	970	1,164	194	20.00%					
Jet > 50,000 lbs	3	4	18	25	10	6	28	44	19	76.00%	227	261	34	14.98%					
Helicopter	100	64	47	211	68	72	131	271	60	28.44%	1,138	1,190	52	4.57%					
Total Powered Aircraft	1,904	1,438	1,295	4,637	1,393	1,368	1,788	4,549	(88)	(1.90%)	22,505	26,744	4,239	18.84%					
Gliders	-	-	-	-	-	-	-	-	-	0.00%	5,108	5,780	672	13.16%					
Total Operations	1,904	1,438	1,295	4,637	1,393	1,368	1,788	4,549	(88)	(1.90%)	27,613	32,524	4,911	17.79%					

	COMMENTS										Year over Year				Notes			
	2015				2016				difference	%	1/1/15-12/31/15	1/1/16-12/31/16	difference	%				
	Oct	Nov	Dec	Q4	Oct	Nov	Dec	Q4			1/1/15-12/31/15	1/1/16-12/31/16						
Comment Location																		
Alder	-	-	-	-	-	-	-	-	-	0.00%	18	19	1	5.56%				
Donner Lake	-	-	-	-	-	-	-	-	-	0.00%	-	-	-	0.00%				
Downtown	-	-	-	-	-	-	-	-	-	0.00%	1	1	-	0.00%				
Gateway	-	-	-	-	-	-	-	-	-	0.00%	-	1	1	100.00%				
Glenshire	3	1	-	4	7	3	2	12	8	200.00%	65	105	40	61.54%				
Martis Valley Estates	1	1	-	2	4	6	7	17	15	750.00%	25	72	47	188.00%				
Northstar/ Martis	1	-	-	1	2	6	2	10	9	900.00%	33	129	96	290.91%				
Olympic Heights	12	1	6	19	4	5	7	16	(3)	(15.79%)	125	142	17	13.60%				
Ponderosa	2	-	-	2	-	-	-	-	(2)	(100.00%)	22	31	9	40.91%				
Prosser	3	1	2	6	1	2	4	7	1	16.67%	123	99	(24)	(19.51%)				
Tahoe Donner	8	2	-	10	2	4	5	11	1	10.00%	50	76	26	52.00%				
Unknown/Other	-	-	-	-	-	-	-	-	-	0.00%	1	5	4	400.00%				
Total Comments	30	6	8	44	20	26	27	73	29	65.91%	463	680	217	46.87%				
Comment Type																		
Piston	12	2	4	18	4	13	7	24	6	33.33%	125	208	83	66.40%				
Turbine	7	2	2	11	9	4	6	19	8	72.73%	99	118	19	19.19%				
Jet	9	2	2	13	6	7	14	27	14	107.69%	213	304	91	42.72%				
Helo	2	-	-	2	1	1	-	2	-	0.00%	12	6	(6)	(50.00%)				
Unknown	-	-	-	-	-	1	-	1	1	100.00%	14	44	30	214.29%				
Total Comments	30	6	8	44	20	26	27	73	29	65.91%	463	680	217	46.87%				
Operations per Comment				105				62	(43)	(40.87%)	60	48	(12)	(19.80%)				

**Truckee Tahoe Airport District
Annual Operations Summary
2012-2016**

	Operations							Operations Mix						
	2012	2013	2014	2015	2016	Total	Avg. Change	2012	2013	2014	2015	2016	Total	Change
Operations Detail														
Piston Single	8,484	8,047	8,293	10,676	14,262	49,762	13.87%	39.72%	37.22%	36.43%	38.66%	43.85%	39.53%	4.13%
Piston Twin	931	1,042	1,110	1,524	1,205	5,812	6.66%	4.36%	4.82%	4.88%	5.52%	3.70%	4.62%	-0.65%
Total Piston	9,415	9,089	9,403	12,200	15,467	55,574	13.21%	44.08%	42.04%	41.31%	44.18%	47.56%	44.15%	3.48%
Turbo Prop	3,116	3,036	3,691	5,756	6,413	22,012	19.77%	14.59%	14.04%	16.21%	20.85%	19.72%	17.49%	5.13%
Jet < 12,499 lbs	441	1,046	1,276	924	918	4,605	20.12%	2.06%	4.84%	5.61%	3.35%	2.82%	3.66%	0.76%
Jet 12,500-19,999 lbs	642	946	1,027	1,290	1,331	5,236	19.99%	3.01%	4.38%	4.51%	4.67%	4.09%	4.16%	1.09%
Jet 20,000-49,999 lbs	583	974	1,145	970	1,164	4,836	18.87%	2.73%	4.51%	5.03%	3.51%	3.58%	3.84%	0.85%
Jet > 50,000 lbs	-	-	-	227	261	488	n/a	0.00%	0.00%	0.00%	0.82%	0.80%	0.39%	0.80%
Total Jet	1,666	2,966	3,448	3,411	3,674	15,165	21.86%	7.80%	13.72%	15.15%	12.35%	11.30%	12.05%	3.50%
Helicopter	1,666	1,638	1,333	1,138	1,190	6,965	-8.07%	7.80%	7.58%	5.86%	4.12%	3.66%	5.53%	-4.14%
Total Powered Aircraft	15,863	16,729	17,875	22,505	26,744	99,716	13.95%	74.27%	77.38%	78.52%	81.50%	82.23%	79.22%	7.96%
Gliders	5,496	4,889	4,889	5,108	5,780	26,162	1.27%	25.73%	22.62%	21.48%	18.50%	17.77%	20.78%	-7.96%
Total Operations	21,359	21,618	22,764	27,613	32,524	125,878	11.09%	100.00%	100.00%	100.00%	100.00%	100.00%	100.00%	0.00%