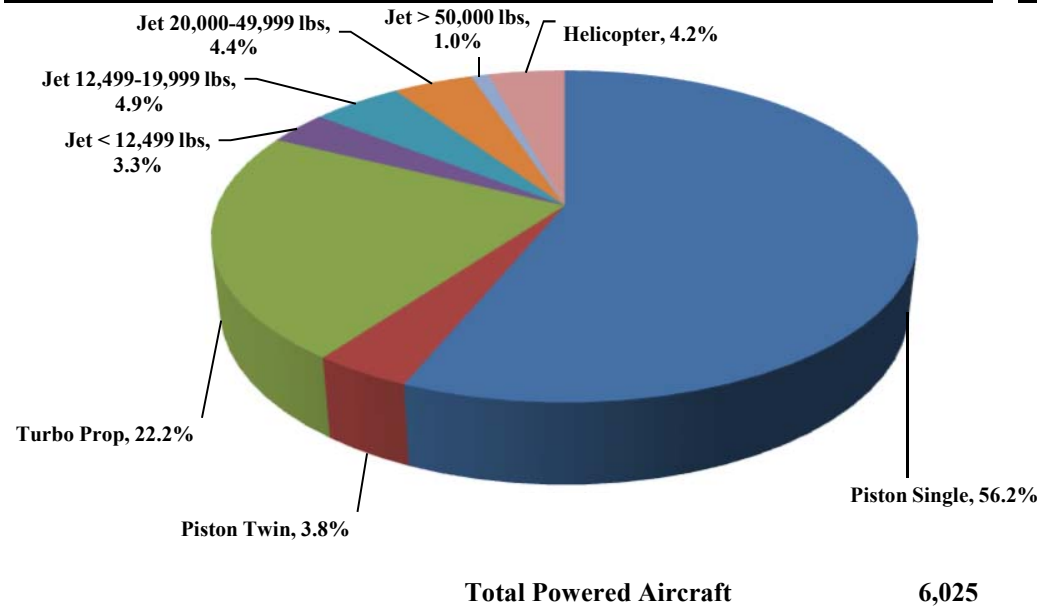




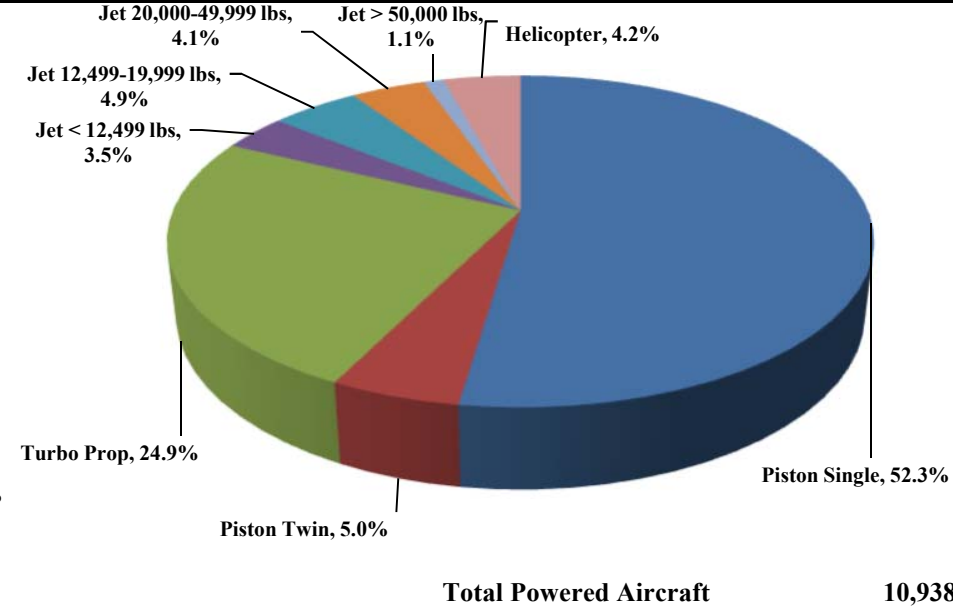
TRUCKEE TAHOE AIRPORT DISTRICT Operations and Community Comment Report as of 6/30/16



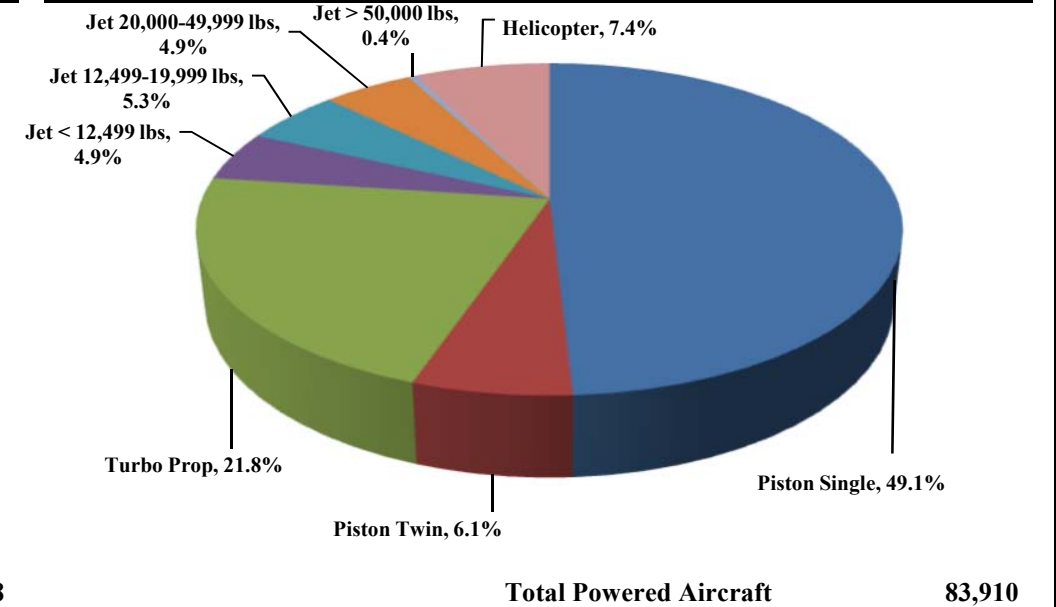
Current Quarter | Operations
April 1, 2016 - June 30, 2016



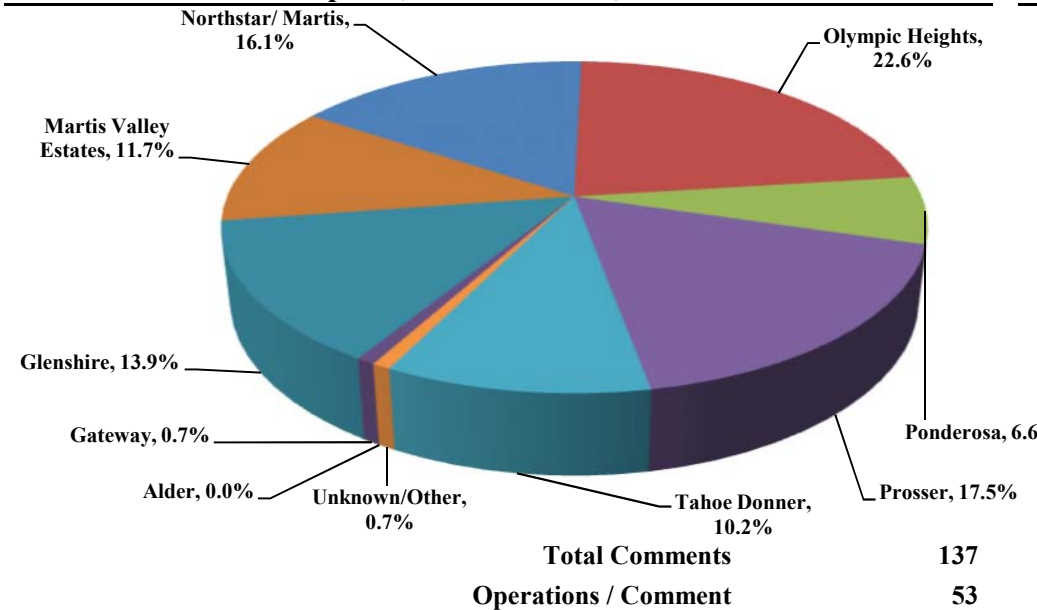
Year-to-Date | Operations
January 1, 2016 - June 30, 2016



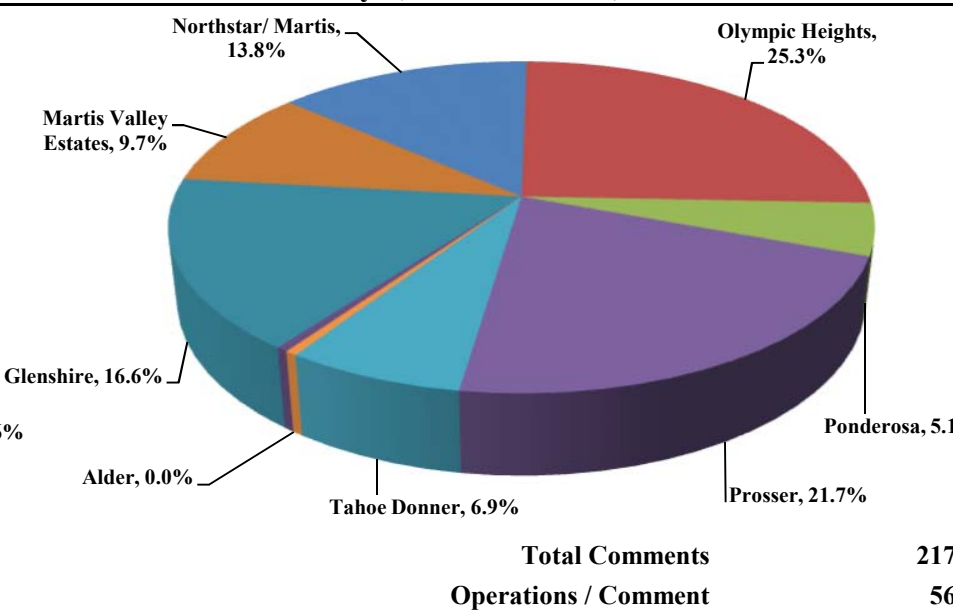
Historic | Operations
January 1, 2012 - June 30, 2016



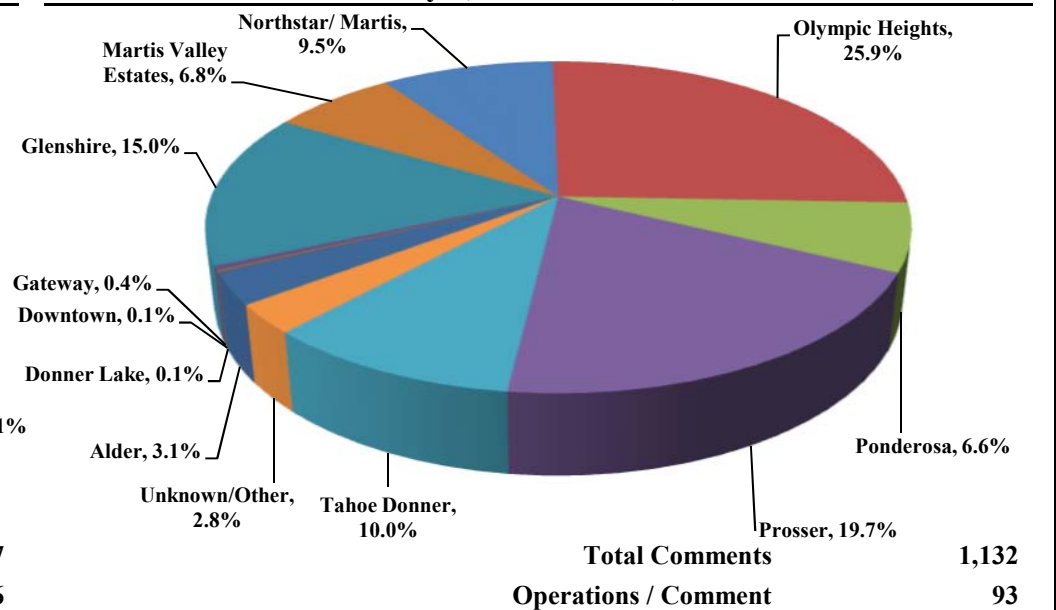
Current Quarter | Comments
April 1, 2016 - June 30, 2016



Year-to-Date | Comments
January 1, 2016 - June 30, 2016



Historic | Comments
January 1, 2012 - June 30, 2016



Notes

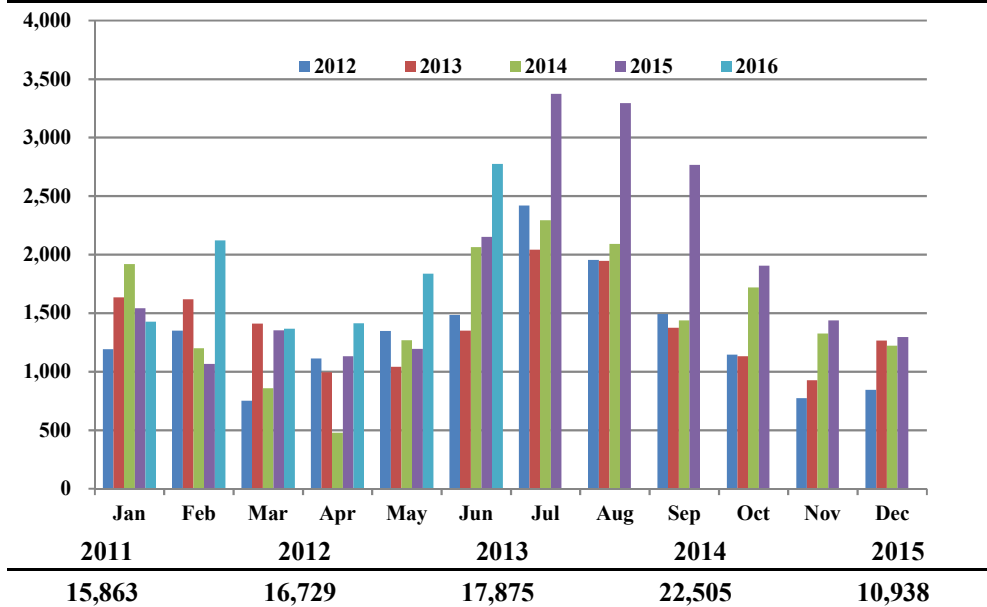
April 2014 - Launched new TTAD Website with 'Report Noise' link.
 Operations graphs above use Total Powered Aircraft. Glider operations are not included. August 2014, 4 departure cameras added and integrated into NOMS system. July 2015, 7 arrival cameras added to system.
 Jets > 50,000lbs subcategory was added in Q1 2015. Reporting and analysis prior to 2015 is not included.



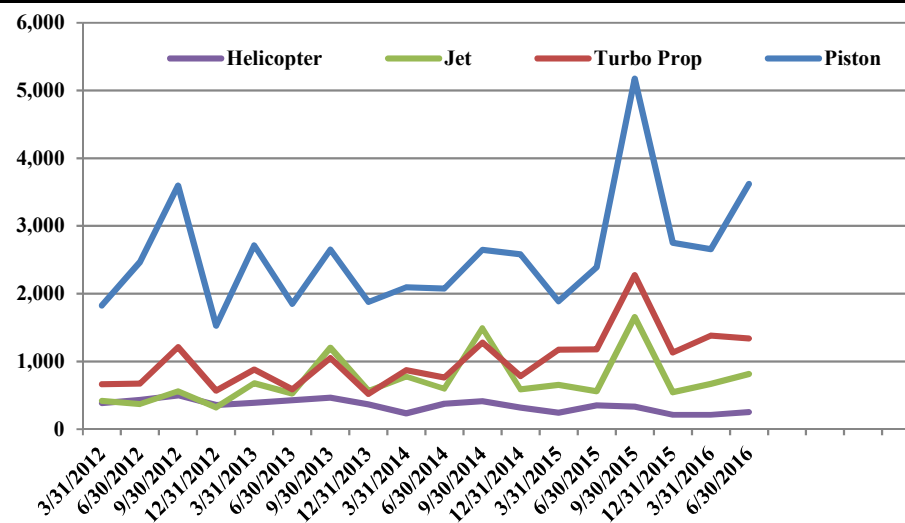
TRUCKEE TAHOE AIRPORT DISTRICT Operations and Community Comment Report as of 6/30/16



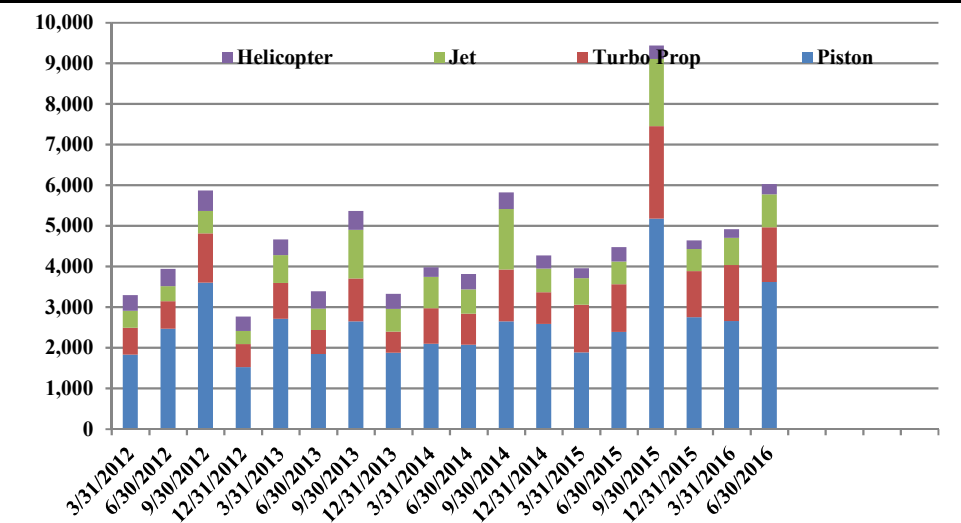
Operations | by Month by Year
January 1, 2012 -June 30, 2016



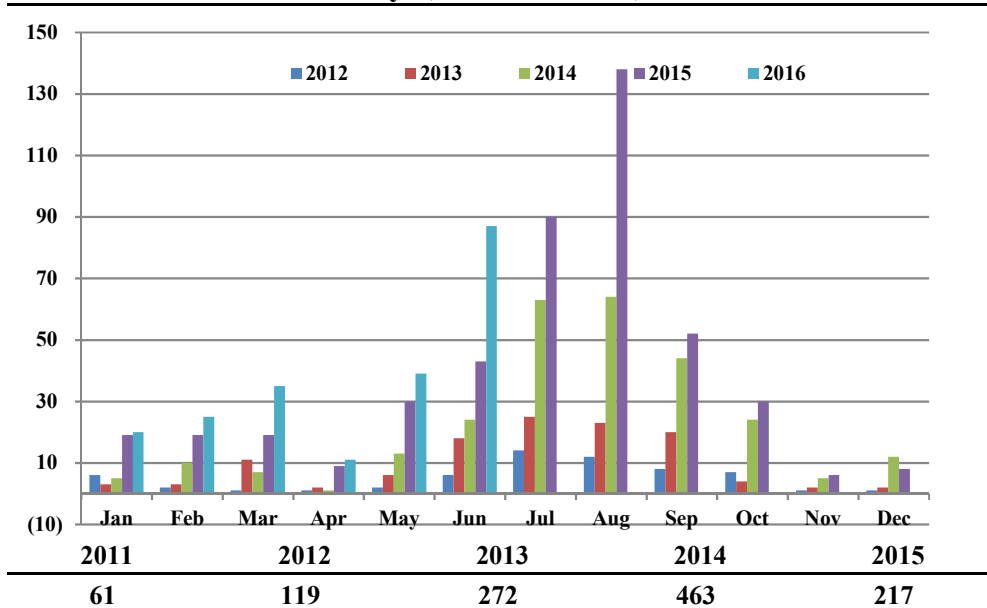
Operations | by Type by Quarter
January 1, 2012 -June 30, 2016



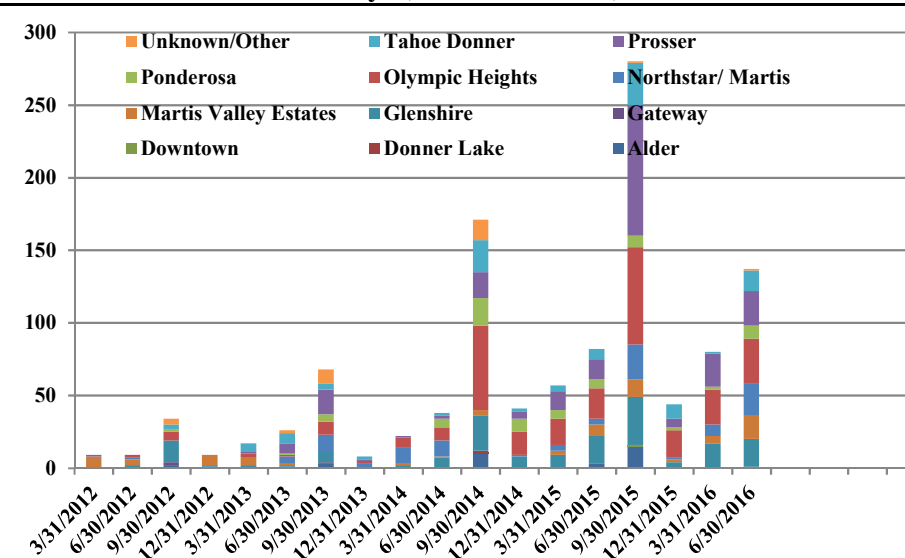
Operations | Mix by Type by Quarter
January 1, 2012 -June 30, 2016



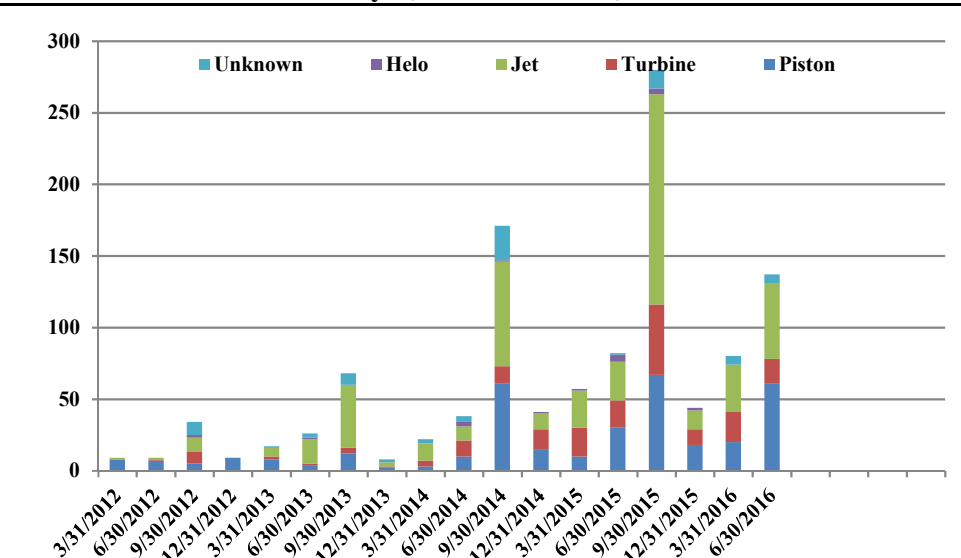
Comments | by Month by Year
January 1, 2012 -June 30, 2016



Comments | by Locale by Quarter
January 1, 2012 -June 30, 2016



Comments | by Type by Quarter
January 1, 2012 -June 30, 2016



Notes

April 2014 - Launched new TTAD Website with 'Report Noise' link.
 Operations graphs above use Total Powered Aircraft. Glider operations are not included. August 2014, 4 departure cameras added and integrated into NOMS system. July 2015, 7 arrival cameras added to system.
 Jets > 50,000lbs subcategory was added in Q1 2015. Reporting and analysis prior to 2015 is not included.



Truckee Tahoe Airport District Operations and Community Comment Report as of 6/30/16



	OPERATIONS										Year over Year				Notes
	2015				2016				difference	%	7/1/14-6/30/15	7/1/15-6/30/16	difference	%	
	Apr	May	Jun	Q2	Apr	May	Jun	Q2							
Operations Detail															
Piston Single	519	533	944	1,996	770	1,062	1,557	3,389	1,393	69.79%	8,246	12,843	4,597	55.75%	
Piston Twin	119	71	200	390	73	64	93	230	(160)	(41.03%)	1,258	1,358	100	7.95%	
Turbo Prop	284	350	545	1,179	335	411	594	1,340	161	13.66%	4,409	6,123	1,714	38.88%	
Jet < 12,499 lbs	34	41	86	161	42	64	92	198	37	22.98%	1,036	934	(102)	(9.85%)	
Jet 12,499-19,999 lbs	42	59	109	210	53	75	167	295	85	40.48%	1,089	1,384	295	27.09%	
Jet 20,000-49,999 lbs	19	50	98	167	45	78	140	263	96	57.49%	1,073	1,104	31	2.89%	
Jet > 50,000 lbs	-	6	14	20	8	10	40	58	38	190.00%	87	259	172	197.70%	
Helicopter	115	83	154	352	88	73	91	252	(100)	(28.41%)	1,323	1,005	(318)	(24.04%)	
Total Powered Aircraft	1,132	1,193	2,150	4,475	1,414	1,837	2,774	6,025	1,550	34.64%	18,521	25,010	6,489	35.04%	
Gliders	-	148	852	1,000	-	276	940	1,216	216	21.60%	5,066	5,324	258	5.09%	
Total Operations	1,132	1,341	3,002	5,475	1,414	2,113	3,714	7,241	1,766	32.26%	23,587	30,334	6,747	28.60%	

	COMMENTS										Year over Year				Notes
	2015				2016				difference	%	7/1/14-6/30/15	7/1/15-6/30/16	difference	%	
	Apr	May	Jun	Q2	Apr	May	Jun	Q2							
Comment Location															
Alder	-	-	3	3	-	-	-	-	(3)	(100.00%)	13	15	2	15.38%	
Donner Lake	-	-	-	-	-	-	-	-	-	0.00%	1	-	(1)	(100.00%)	
Downtown	-	-	-	-	-	-	-	-	-	0.00%	-	1	1	100.00%	
Gateway	-	-	-	-	-	-	1	1	1	100.00%	1	1	-	0.00%	
Glenshire	3	8	8	19	3	3	13	19	-	0.00%	60	73	13	21.67%	
Martis Valley Estates	1	2	5	8	1	5	10	16	8	100.00%	15	35	20	133.33%	
Northstar/ Martis	-	1	3	4	1	13	8	22	18	450.00%	9	55	46	511.11%	
Olympic Heights	1	11	9	21	2	5	24	31	10	47.62%	113	141	28	24.78%	
Ponderosa	1	3	2	6	1	4	4	9	3	50.00%	40	21	(19)	(47.50%)	
Prosser	3	4	7	14	2	3	19	24	10	71.43%	50	143	93	186.00%	
Tahoe Donner	-	1	6	7	1	6	7	14	7	100.00%	35	54	19	54.29%	
Unknown/Other	-	-	-	-	-	-	1	1	1	100.00%	14	2	(12)	(85.71%)	
Total Comments	9	30	43	82	11	39	87	137	55	67.07%	351	541	190	54.13%	-
Comment Type															
Piston	4	10	16	30	2	23	36	61	31	103.33%	116	166	50	43.10%	
Turbine	3	11	5	19	1	6	10	17	(2)	(10.53%)	65	98	33	50.77%	
Jet	2	7	18	27	7	10	36	53	26	96.30%	137	246	109	79.56%	
Helo	-	2	3	5	-	-	-	-	(5)	(100.00%)	8	6	(2)	(25.00%)	
Unknown	-	-	1	1	1	-	5	6	5	500.00%	25	25	-	0.00%	
Total Comments	9	30	43	82	11	39	87	137	55	67.07%	351	541	190	54.13%	-
Operations per Comment															
				67				53	(14)	(20.84%)	67	56	(11)	(16.56%)	-