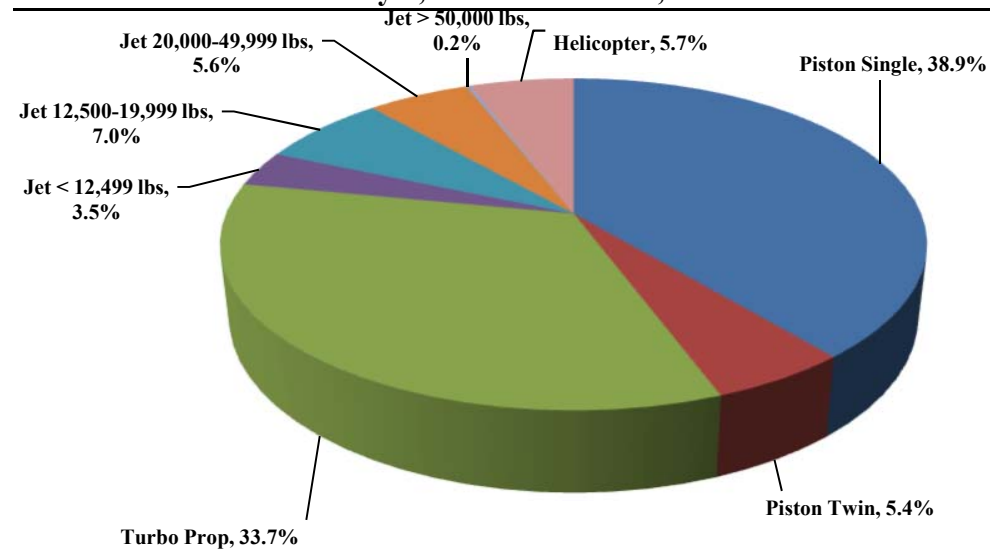




TRUCKEE TAHOE AIRPORT DISTRICT Operations and Community Comment Report as of 3/31/17

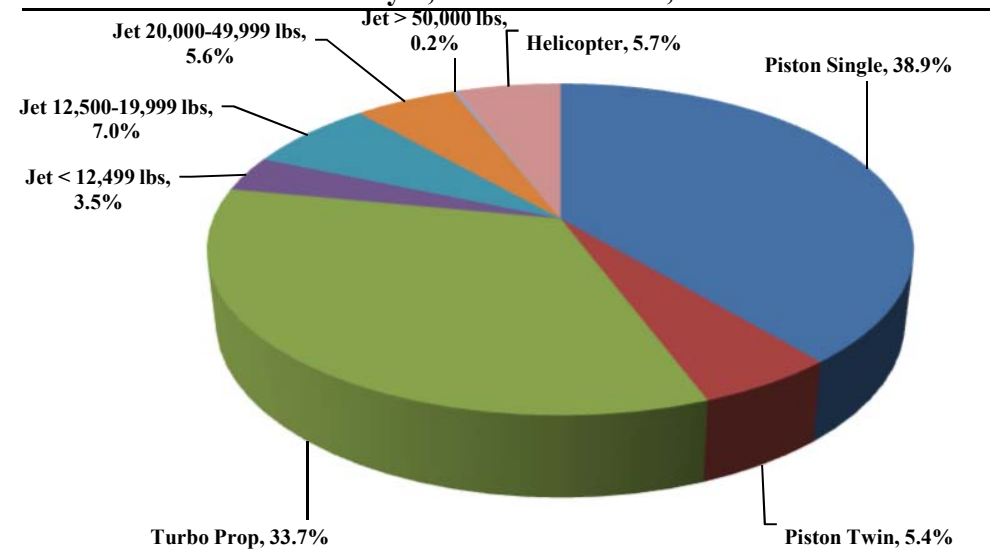


Current Quarter | Operations
January 1, 2017 - March 31, 2017



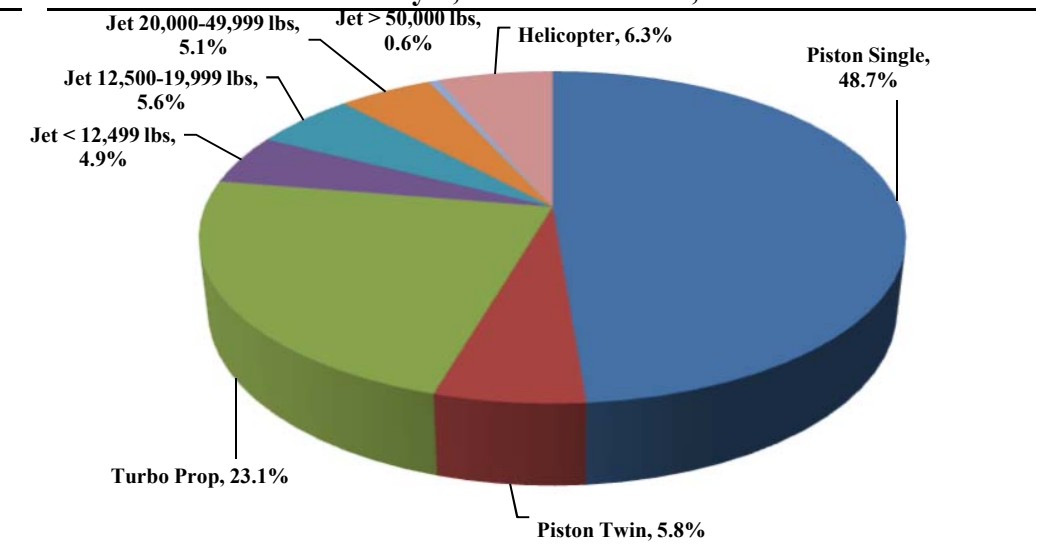
Total Powered Aircraft 4,147

Year-to-Date | Operations
January 1, 2017 - March 31, 2017



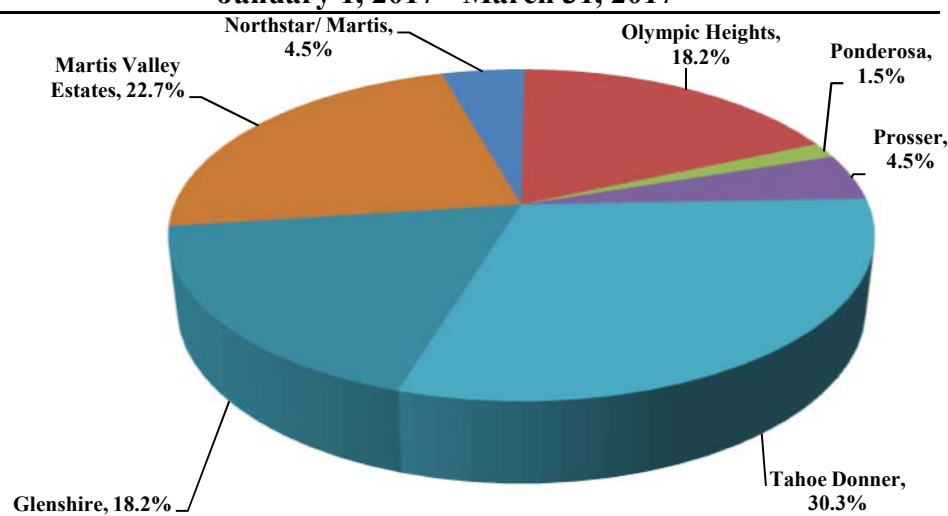
Total Powered Aircraft 4,147

Historic | Operations
January 1, 2013 - March 31, 2017



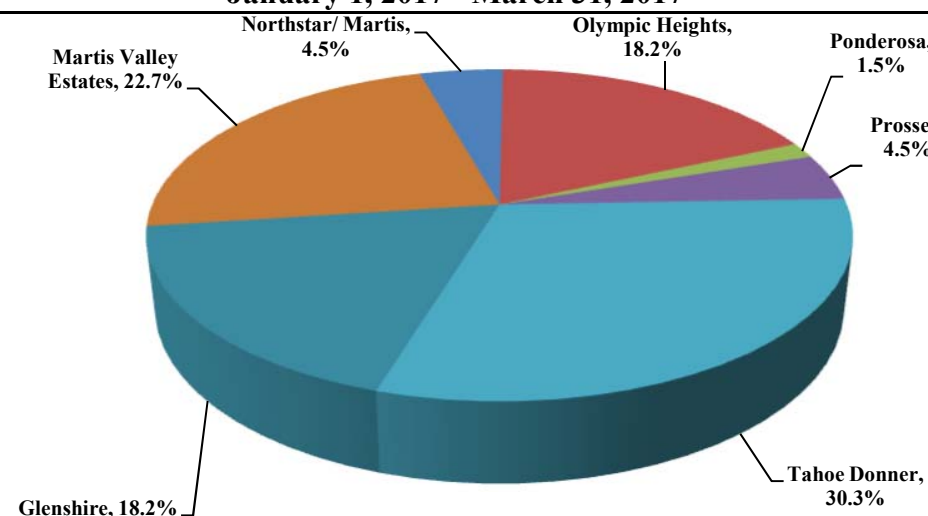
Total Powered Aircraft 88,000

Current Quarter | Comments
January 1, 2017 - March 31, 2017



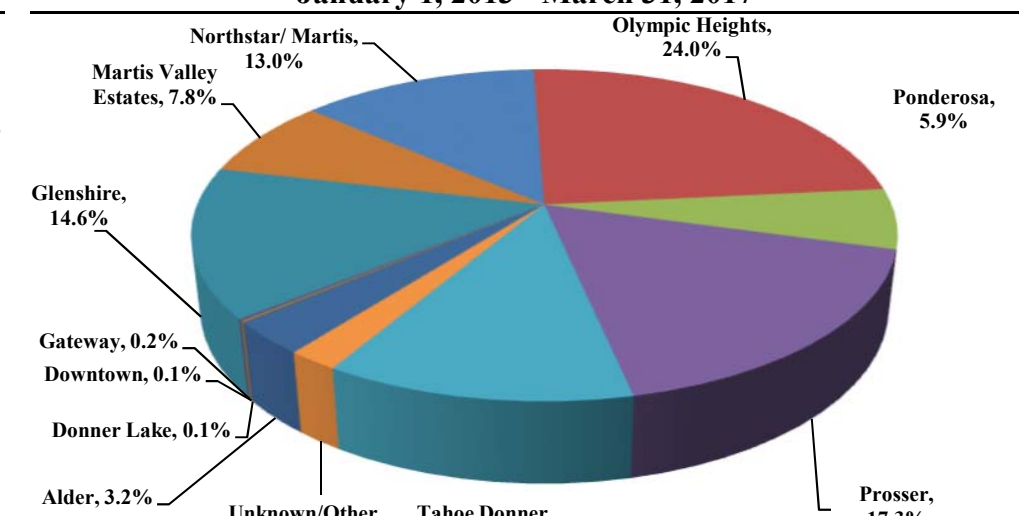
Total Comments 66
Operations / Comment 63

Year-to-Date | Comments
January 1, 2017 - March 31, 2017



Total Comments 66
Operations / Comment 63

Historic | Comments
January 1, 2013 - March 31, 2017



Total Comments 1,600
Operations / Comment 68

Notes

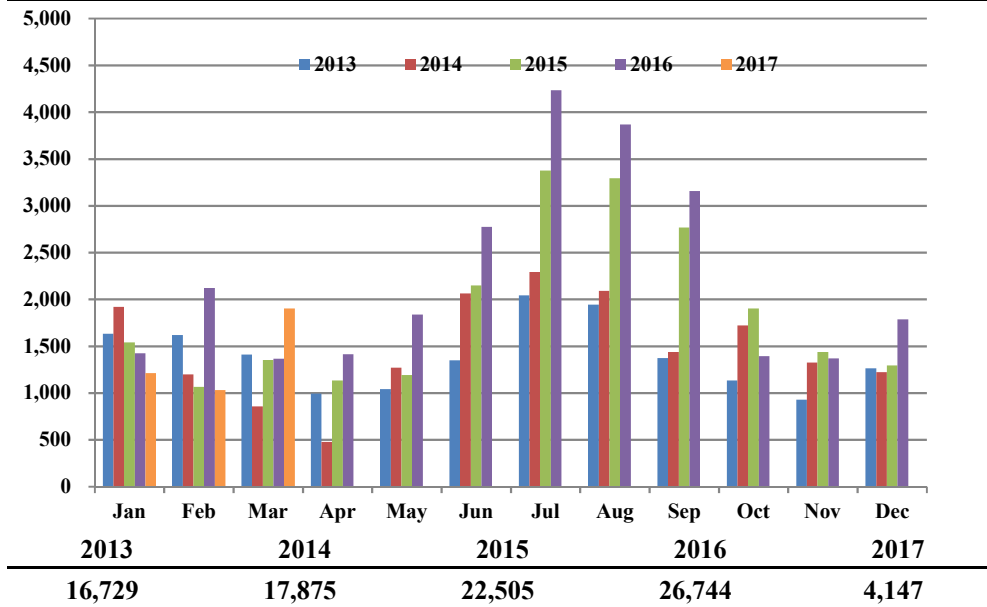
April 2014 - Launched new TTAD Website with 'Report Noise' link.
Operations graphs above use Total Powered Aircraft. Glider operations are not included.
Jets > 50,000lbs subcategory was added in Q1 2015. Reporting and analysis prior to 2015 is not included.



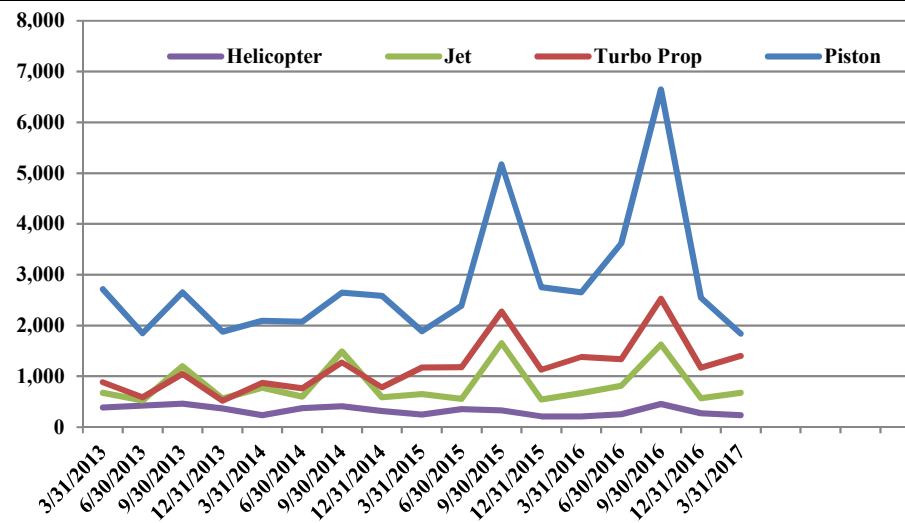
TRUCKEE TAHOE AIRPORT DISTRICT Operations and Community Comment Report as of 3/31/17



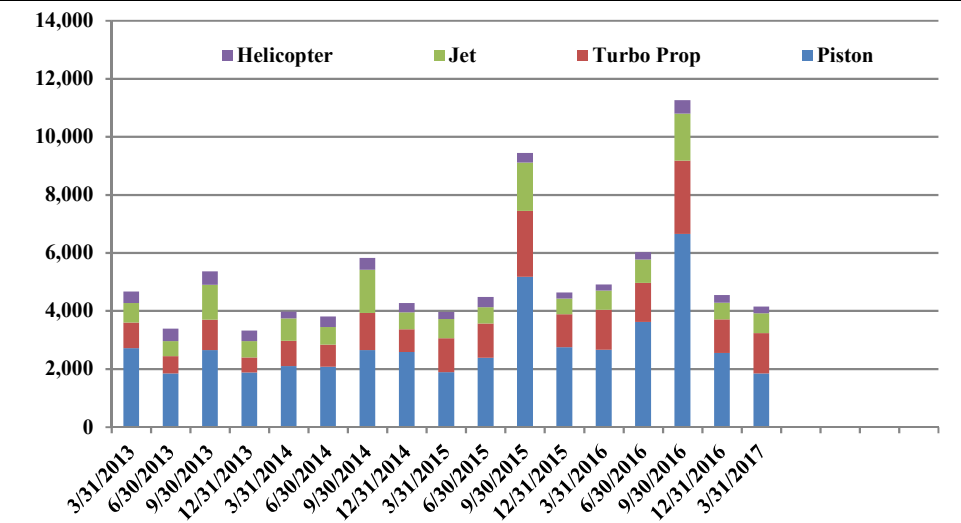
Operations | by Month by Year
January 1, 2013 - March 31, 2017



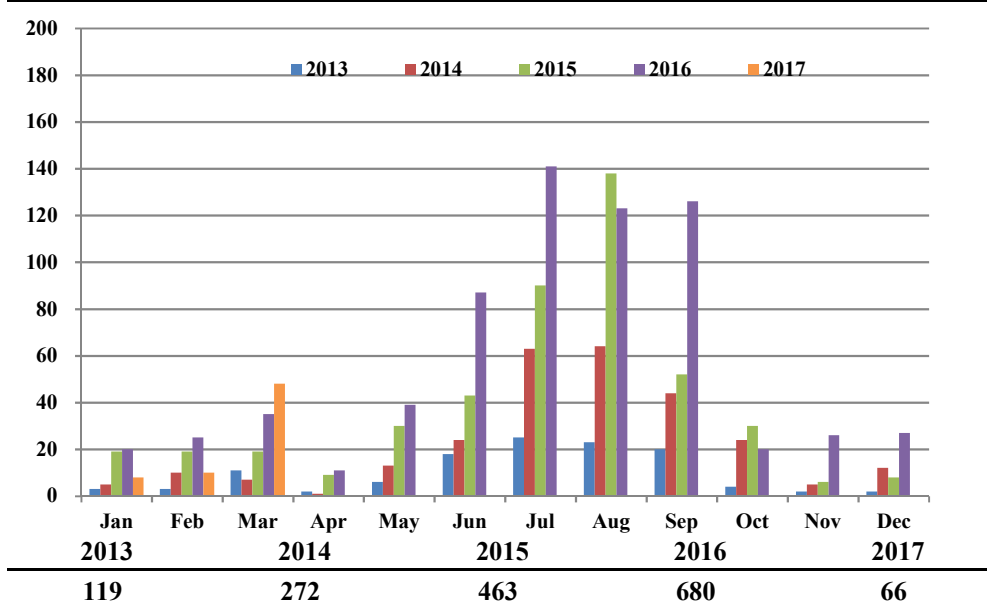
Operations | by Type by Quarter
January 1, 2013 - March 31, 2017



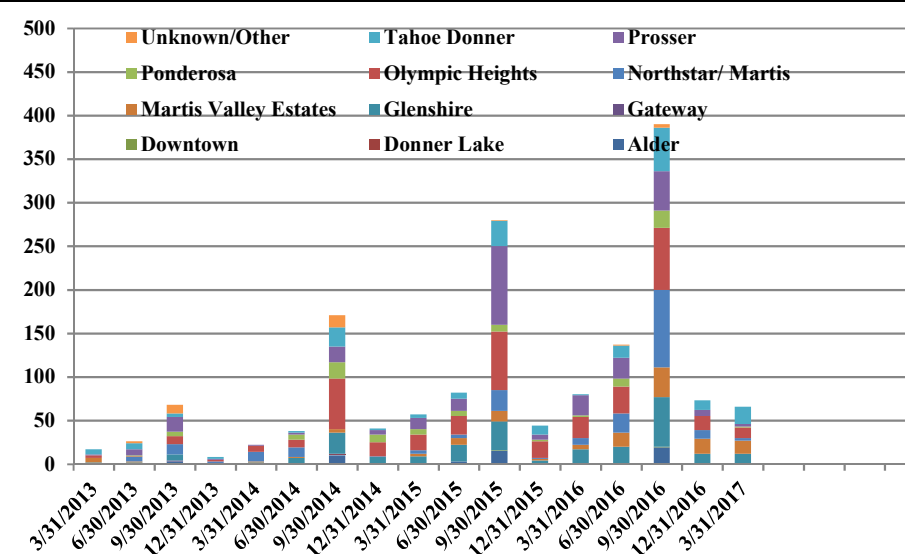
Operations | Mix by Type by Quarter
January 1, 2013 - March 31, 2017



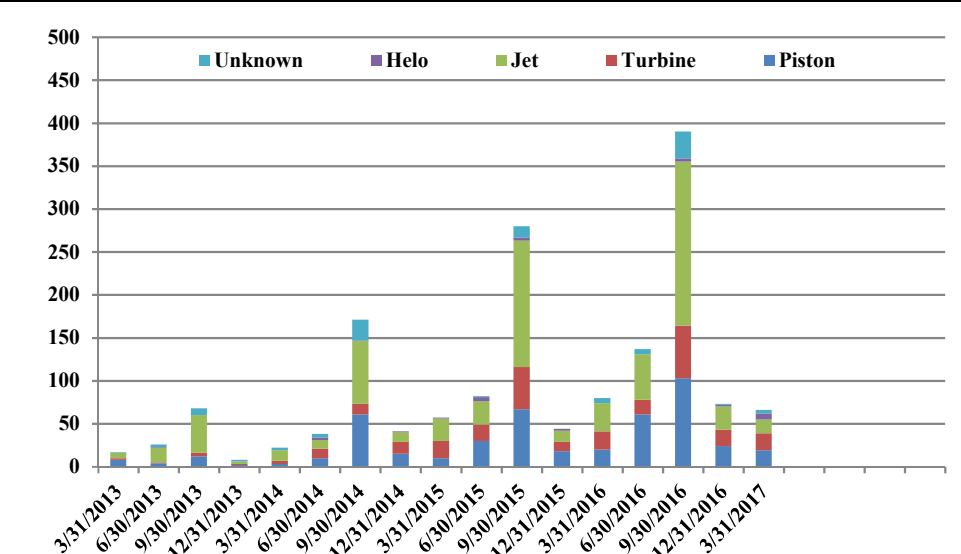
Comments | by Month by Year
January 1, 2013 - March 31, 2017



Comments | by Locale by Quarter
January 1, 2013 - March 31, 2017



Comments | by Type by Quarter
January 1, 2013 - March 31, 2017



Notes

April 2014 - Launched new TTAD Website with 'Report Noise' link.
 Operations graphs above use Total Powered Aircraft. Glider operations are not included.
 Jets > 50,000lbs subcategory was added in Q1 2015. Reporting and analysis prior to 2015 is not included.



Truckee Tahoe Airport District Operations and Community Comment Report as of 3/31/17



	OPERATIONS										Year over Year				Notes
	2016				2017				difference	%	4/1/15-3/31/16	4/1/16-3/31/17	difference	%	
	Jan	Feb	Mar	Q1	Jan	Feb	Mar	Q1			4/1/15-3/31/16	4/1/16-3/31/17			
Operations Detail															
Piston Single	561	1,103	671	2,335	422	361	831	1,614	(721)	(30.88%)	11,450	13,541	2,091	18.26%	
Piston Twin	94	142	84	320	63	74	87	224	(96)	(30.00%)	1,518	1,109	(409)	(26.94%)	
Turbo Prop	501	491	388	1,380	462	367	569	1,398	18	1.30%	5,962	6,431	469	7.87%	
Jet < 12,499 lbs	58	72	58	188	48	25	71	144	(44)	(23.40%)	897	874	(23)	(2.56%)	
Jet 12,500-19,999 lbs	68	111	57	236	86	78	126	290	54	22.88%	1,299	1,385	86	6.62%	
Jet 20,000-49,999 lbs	57	75	50	182	40	73	119	232	50	27.47%	1,008	1,214	206	20.44%	
Jet > 50,000 lbs	23	26	12	61	4	-	5	9	(52)	(85.25%)	221	209	(12)	(5.43%)	
Helicopter	63	101	47	211	87	54	95	236	25	11.85%	1,105	1,215	110	9.95%	
Total Powered Aircraft	1,425	2,121	1,367	4,913	1,212	1,032	1,903	4,147	(766)	(15.59%)	23,460	25,978	2,518	10.73%	
Gliders	-	-	-	-	-	-	-	-	-	0.00%	5,108	5,780	672	13.16%	
Total Operations	1,425	2,121	1,367	4,913	1,212	1,032	1,903	4,147	(766)	(15.59%)	28,568	31,758	3,190	11.17%	

	COMMENTS										Year over Year				Notes	
	2016				2017				difference	%	4/1/15-3/31/16	4/1/16-3/31/17	difference	%		
	Jan	Feb	Mar	Q1	Jan	Feb	Mar	Q1			4/1/15-3/31/16	4/1/16-3/31/17				
Comment Location																
Alder	-	-	-	-	-	-	-	-	-	0.00%	18	19	1	5.56%		
Donner Lake	-	-	-	-	-	-	-	-	-	0.00%	-	-	-	0.00%		
Downtown	-	-	-	-	-	-	-	-	-	0.00%	1	1	-	0.00%		
Gateway	-	-	-	-	-	-	-	-	-	0.00%	-	1	1	100.00%		
Glenshire	3	2	12	17	2	2	8	12	(5)	(29.41%)	73	100	27	36.99%		
Martis Valley Estates	-	1	4	5	4	2	9	15	10	200.00%	27	82	55	203.70%		
Northstar/ Martis	4	3	1	8	-	2	1	3	(5)	(62.50%)	37	124	87	235.14%		
Olympic Heights	11	6	7	24	2	-	10	12	(12)	(50.00%)	131	130	(1)	(0.76%)		
Ponderosa	-	1	1	2	-	-	1	1	(1)	(50.00%)	18	30	12	66.67%		
Prosser	2	12	9	23	-	2	1	3	(20)	(86.96%)	133	79	(54)	(40.60%)		
Tahoe Donner	-	-	1	1	-	2	18	20	19	1900.00%	47	95	48	102.13%		
Unknown/Other	-	-	-	-	-	-	-	-	-	0.00%	1	5	4	400.00%		
Total Comments	20	25	35	80	8	10	48	66	(14)	(17.50%)	486	666	180	37.04%	-	
Comment Type																
Piston	6	6	8	20	-	2	17	19	(1)	(5.00%)	135	207	72	53.33%		
Turbine	8	4	9	21	3	1	16	20	(1)	(4.76%)	100	117	17	17.00%		
Jet	6	13	14	33	1	3	12	16	(17)	(51.52%)	220	287	67	30.45%		
Helo	-	-	-	-	3	3	1	7	7	100.00%	11	13	2	18.18%		
Unknown	-	2	4	6	1	1	2	4	(2)	(33.33%)	20	42	22	110.00%		
Total Comments	20	25	35	80	8	10	48	66	(14)	(17.50%)	486	666	180	37.04%	-	
Operations per Comment				61.4				62.8	1.4		2.31%	59	48	(11)	(18.88%)	-