

BIOLOGICAL RESOURCES AND WETLANDS CONSTRAINTS ASSESSMENT
FOR THE

TRUCKEE TAHOE AIRPORT ±8-ACRE WEST HANGAR PROJECT, PHASE I, STUDY AREA

NEAR THE TOWN OF TRUCKEE, NEVADA & PLACER COUNTIES, CALIFORNIA



Prepared for:

Wallace Environmental Consulting
P.O. Box 266
Courtland, CA 95615

Prepared by:



11601 Blocker Drive, Ste. 100
Auburn, California 95603
(530) 888-0130

NOVEMBER 2016

TABLE OF CONTENTS

INTRODUCTION	1
Project Location.....	1
Setting.....	1
Objectives of this Assessment.....	1
METHODS	1
Literature Review	1
Field Assessment	4
FINDINGS	4
Biological Communities.....	4
Waters of the U.S.	4
Special-Status Species	8
Plants.....	8
Animals	8
CONCLUSIONS.....	10
Waters of the United States	10
Streams, Pond, and Riparian Habitat	10
Special-Status Plants	10
Special-Status Wildlife	10
DATABASE QUERIES.....	11

FIGURES

Figure 1. Site and Vicinity Map.....	2
Figure 2. Aerial Photo.....	3
Figure 3. Habitat Map.....	5
Figures 4a, 4b. Site Photos.....	6
Figure 5. CNDDDB Special-Status Species Occurrences, Two-Mile Radius	9

APPENDICES

Appendix A. Results of USFWS IPaC query of Study Area	
Appendices B1 and B2. Results of CNDDDB Two-Quad Query	

BIOLOGICAL RESOURCES AND WETLANDS CONSTRAINTS ASSESSMENT FOR THE TRUCKEE TAHOE AIRPORT, ±8-ACRE WEST HANGAR PROJECT, PHASE I, STUDY AREA

INTRODUCTION

The airport is proposing to construct the first phase of new hangar development on undeveloped land in the western portion of the airport in 2017.

Project Location

Truckee Tahoe airport is located approximately two miles east of the Town of Truckee in both Nevada and Placer Counties. The location of this study area is in Nevada County and corresponds to Section 18 of Township 17 North and Range 17 East on the 7.5 minute Truckee quad map, California USGS quadrangle (Figure 1). The coordinates of the approximate center of the study area are 39°19'20.42"N and 120°09'11.30"W.

Setting

The study area is located at an approximate elevation of 5,900 feet primarily among sagebrush, and scattered conifers (predominantly Jeffrey pine) are the common trees outside of the study area (Figure 2).

Objectives of this Assessment

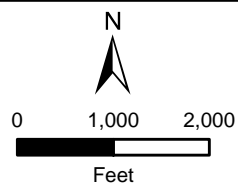
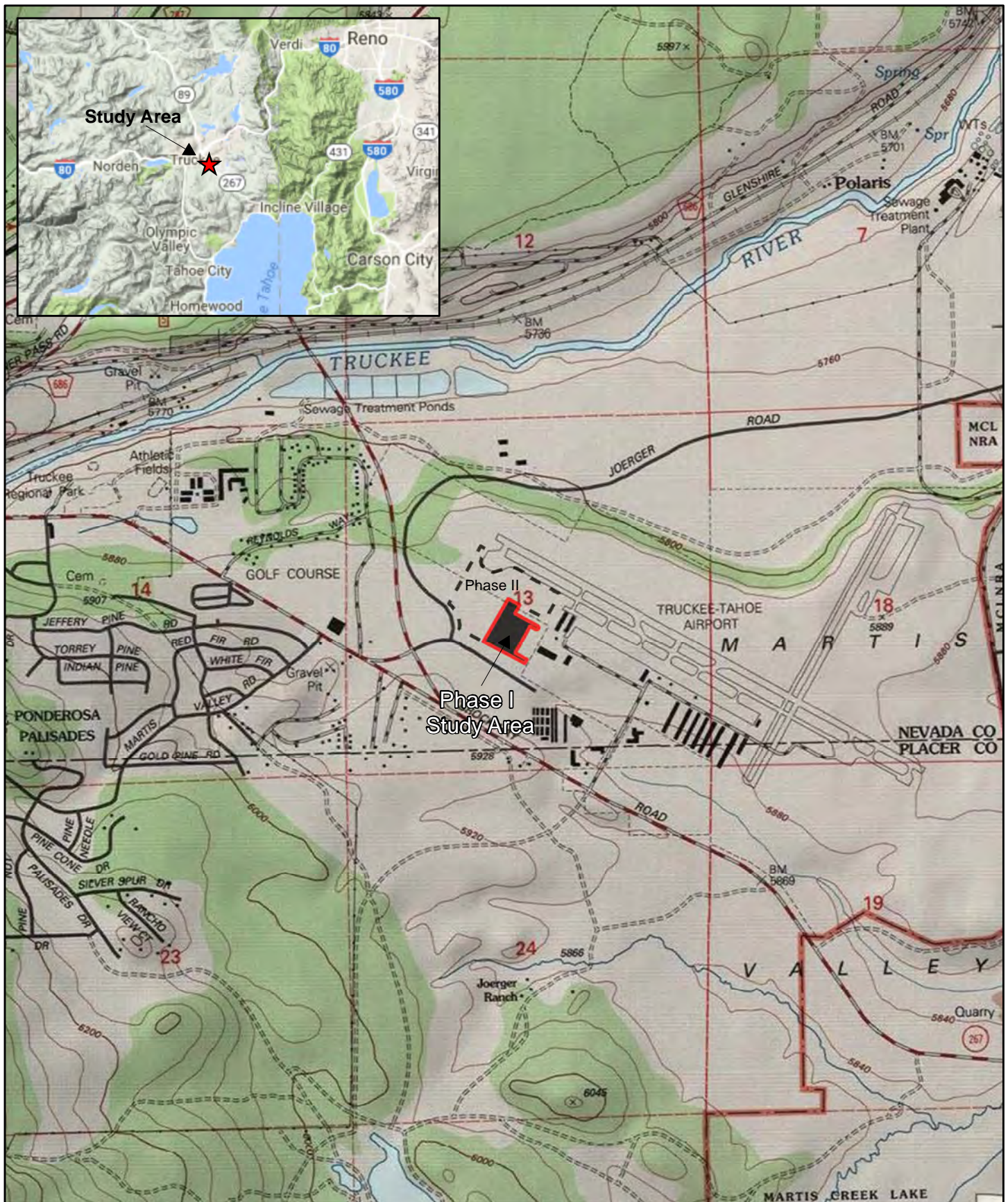
- Identify the biological communities present in the study area.
- Evaluate the potential for occurrence of special-status plant and animal species that could be affected by project activities.
- Determine if sensitive biological and/or wetlands resources occur or may occur in the study area.
- Provide recommendations.

METHODS

Literature Review

To conduct the preliminary assessment of the site, Salix Consulting, Inc. (Salix) reviewed site maps and recent aerial photographs of the study area as well as standard flora and fauna references.

A search of the California Department of Fish and Wildlife Natural Diversity Data Base (CNDDB 2016) was conducted to identify special status plant and animal species known to occur in the two-quadrangle region immediately surrounding the study area. The Truckee and Martis Peak USGS quadrangles were included in the query. The CNDDB list was then reviewed to assess the potential for occurrence of identified special-status plant and animal species within or near the study area. Salix biologists also queried the

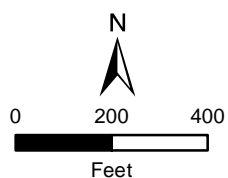


Source Maps: USGS Topographic Map
Truckee Quad 1:24,000
Section 13 Township 17N Range 16E

Figure 1

SITE AND VICINITY MAP

Truckee Tahoe Airport
Town of Truckee, Nevada County, CA



- ▭ Phase I - (±8 acres)
- ▭ Phase II - (±24 acres)

Figure 2

AERIAL MAP

Truckee Tahoe Airport
City of Truckee, Nevada County, CA

U.S. Fish and Wildlife Service (USFWS) IPaC Trust Resources Report generated for the study area.

Field Assessment

A site reconnaissance was conducted by Jeff Glazner on October 19, 2016, to identify existing conditions and assess the site for the presence or absence of sensitive resources. Habitat types were determined, and the site was generally observed for the potential to support special-status species known from the region and to determine if waters of the U.S. may be present.

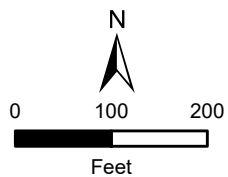
FINDINGS

Biological Communities

Three habitat types are identified within the Phase 1 study area; sagebrush scrub, coniferous forest, and ruderal, all largely equal in area (Figure 3). Sagebrush scrub is the primary habitat type of the larger airport region and contains scattered concentrations of conifers, primarily Jeffrey pine (*Pinus jeffreyi*). The sagebrush scrub habitat is dominated by two species, big sagebrush (*Artemisia tridentata*), and bitterbrush (*Purshia tridentata*). The ruderal areas are primarily graded edges of the sagebrush scrub in varying degrees of regeneration. There appear to be other species of sagebrush scattered throughout the Phase I area, including low sagebrush (*Artemisia arbuscula*). Other species in the Phase 1 area include lodgepole pine (*Pinus contorta*), mountain mule ears (*Wyethia mollis*), mountain tarweed (*Madia glomerata*), squirrel tail grass (*Elymus elymoides*), slender wheatgrass, (*Elymus trachycaulus*), and cheatgrass (*Bromus tectorum*). Figures 4a and 4b provide site photos.

Waters of the U.S.

A formal wetland delineation of the study area was not conducted as part of this constraints analysis. However, the field reconnaissance revealed three linear drainage swales that had been constructed in the Phase 1 Study Area. One runs along the southwestern boundary, one along the southeastern boundary, and one in the northern area. Each of these drainages were constructed to catch and carry storm flows away from airport facilities. Each of these drainages was evaluated for their potential to be a waters of the U.S. (scouring flows or a predominance of wetland vegetation). None of the drainage features display evidence that they are waters of the U.S. They all support upland vegetation, and none show evidence of flowing water. The Phase 1 study area does not contain any potential waters of the U.S.



- Phase I - (± 8 acres)
- Phase II - (± 24 acres)

Figure 3

HABITAT COMPONENTS

Truckee Tahoe Airport
Nevada County, CA



Looking northwest from
southeastern section of study area.
Photo date 10-19-16



Looking east from southeastern
section of study area.
Photo date 10-19-16



Looking north into study area from
southern boundary.
Photo date 10-19-16



Looking southeast along vegetated strip in northern section of study area. *Photo date 10-19-16*



Looking east along upland ditch in northern section of study area. *Photo date 10-19-16*



Looking east into site from near southwest corner of site. *Photo date 10-19-16*

Special-Status Species

Salix reviewed the USFWS IPaC report (Appendix A) and the CNDDDB query reports for potentially-occurring special-status plants and animals (Appendices B1 and B2, respectively) to identify special-status species that may occur within the immediate region of the study area. Figure 5 illustrates special-status plant and animal species occurrences within a 2-mile radius of the study area, based on the query of the CNDDDB.

The CNDDDB identifies 12 plants and 12 animal species that are documented as occurring within the two-quad region surrounding the study area. Based on known habitat requirements of each identified species and the known habitats present in the study area, only one special-status plant species may occur in the study area. And, other than transient movements through the area, none of the special-status wildlife species are considered to have any potential to occur within the study area footprint.

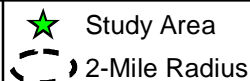
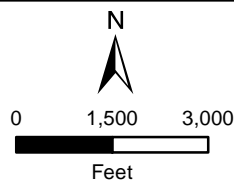
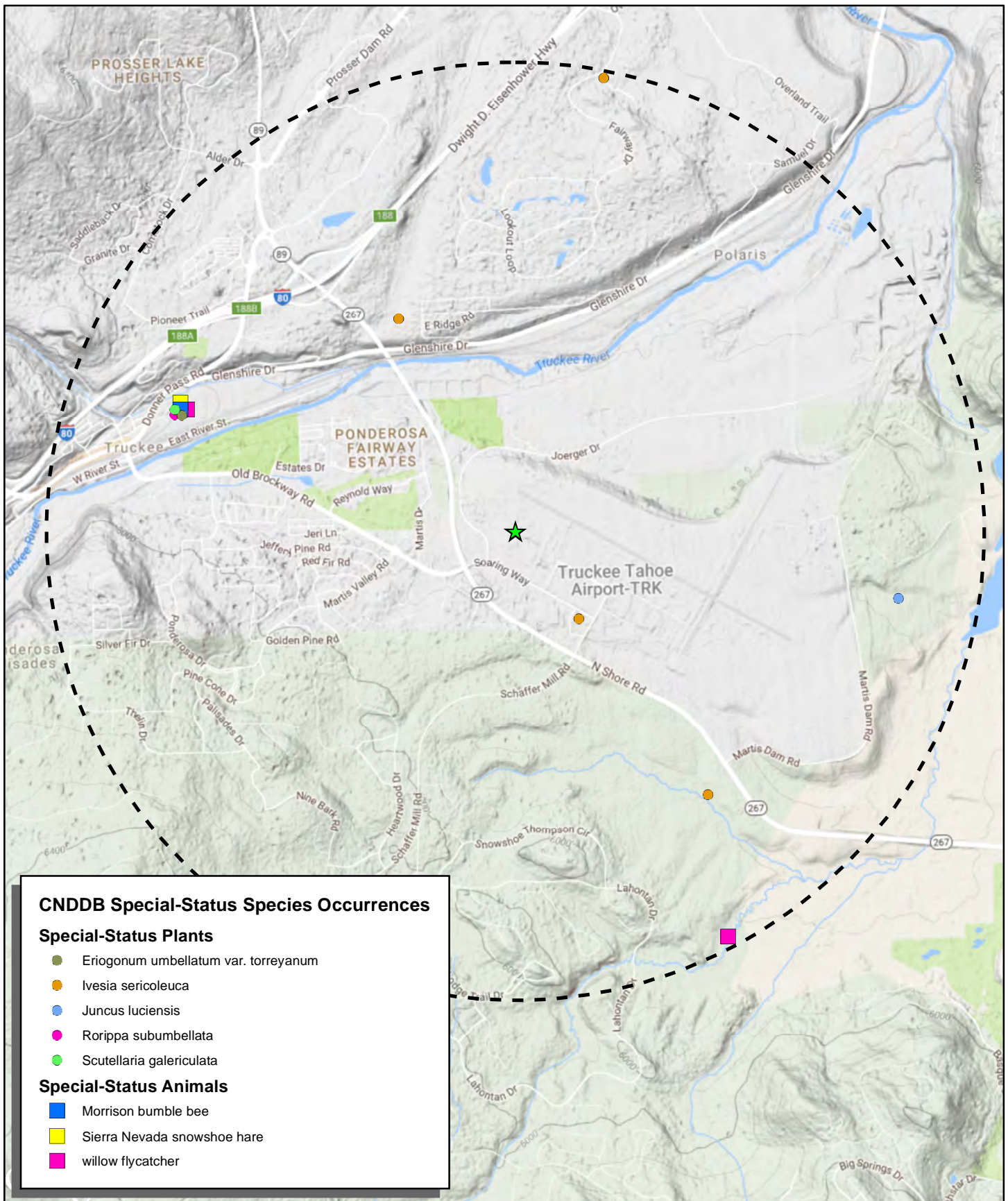
Plants

Twelve special-status plants were identified through the CNDDDB database search as occurring in the immediate region surrounding the study area (Appendix B1). None of the special status plants that occur in the area are federally-listed.

Suitable habitat for one non-listed special status plant species, *Plumas ivesia* (*Ivesia sericoleuca*), may occur in pockets of specialized habitat within or adjacent to sagebrush scrub habitat. *Plumas ivesia* occurs in mesic areas where sagebrush gives way to meadow species.

Animals

Twelve special-status animals were identified through the IPaC and CNDDDB database searches as occurring within the immediate region surrounding the study area. Two species are federally-listed (Lahontan cutthroat trout and Sierra Nevada Yellow-legged frog) and one is a federal candidate (Sierra Nevada red fox). These, and an additional species (willow flycatcher), are state-listed. All of these species occur in habitats that are not present in the study area. Willow flycatcher and yellow warbler occur in willow and riparian areas; Sierra Nevada mountain beaver, Sierra Nevada yellow-legged frog, and Lahontan cutthroat trout occur in stream environments, and Sierra Nevada red fox and Sierra Nevada snowshoe hare are transient and may travel through the project area but would den in areas outside the study area due to the lack of habitat.



Source: CNDB 10-25-16

CONCLUSIONS

Waters of the United States

The study area does not contain any areas that are likely to be considered waters of the U.S. No further analysis is recommended.

Streams, Pond, and Riparian Habitat

The study area does not contain streams, ponds or riparian habitat.

Special-Status Plants

The study area does not contain habitat for any federally-listed special status plant species. However, it does contain potential habitat for one CNPS Rank 1B species, *Plumas ivesia*, which is known from numerous locations near the airport. A springtime survey (May) for this species would determine its presence or absence in the study area.

Special-Status Wildlife

The study area does not contain habitats suitable for any special-status animal species, and therefore, no impacts to special-status animal species are anticipated as a result the proposed project.

However, suitable nesting habitat is present for common raptors known from the region and other birds protected by the Migratory Bird Treaty Act. Suitable nesting habitat includes mature pines located throughout the site. If tree removal activities take place during the breeding/nesting season (February 1 through August 31), disturbance of nesting activities could occur. Take of any active raptor nest is prohibited under California Fish and Game Code sections 3503, 3503.5, and 3513. To avoid impacts to nesting birds, necessary tree removal should occur outside of the nesting season (February 1 through August 31). If tree removal must occur at any time during the typical nesting season, a pre-construction survey should be conducted by a qualified biologist no more than 15 days prior to initiation of proposed development activities. If active nests are found on or immediately adjacent to the site, CDFW should be contacted to determine appropriate avoidance measures.

DATABASE QUERIES

California Department of Fish and Wildlife, Wildlife and Habitat Data Analysis Branch.
2016. Natural Diversity Data Base Report (CNDDB). Sacramento, California..

U.S. Fish and Wildlife Service, Information for Planning and Conservation. 2016. IPaC
Trust Resources Report for Truckee Tahoe Airport area.

Appendix A

USFWS IPaC Report for Tahoe Truckee Airport Study Area

U.S. Fish & Wildlife Service

Truckee Tahoe Airport

IPaC Trust Resources Report

Generated November 16, 2016 12:00 PM MST, IPaC v3.0.9

This report is for informational purposes only and should not be used for planning or analyzing project level impacts. For project reviews that require U.S. Fish & Wildlife Service review or concurrence, please return to the IPaC website and request an official species list from the Regulatory Documents page.



IPaC - Information for Planning and Conservation (<https://ecos.fws.gov/ipac/>): A project planning tool to help streamline the U.S. Fish & Wildlife Service environmental review process.

Table of Contents

IPaC Trust Resources Report	<u>1</u>
Project Description	<u>1</u>
Endangered Species	<u>2</u>
Migratory Birds	<u>3</u>
Refuges & Hatcheries	<u>6</u>
Wetlands	<u>7</u>

U.S. Fish & Wildlife Service

IPaC Trust Resources Report



NAME

Truckee Tahoe Airport

LOCATION

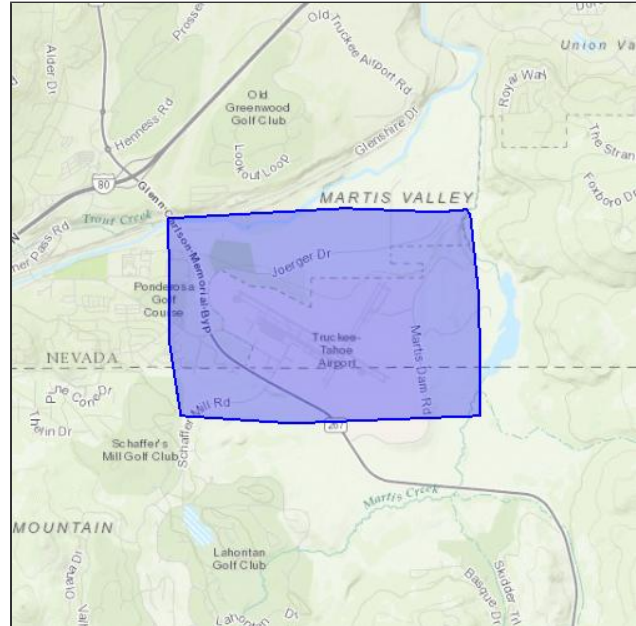
Nevada and Placer counties, California

DESCRIPTION

West Hangar Project

IPAC LINK

<https://ecos.fws.gov/ipac/project/W47LF-AKSSZ-FG3DJ-EDKWM-WRY4DA>



U.S. Fish & Wildlife Service Contact Information

Trust resources in this location are managed by:

Sacramento Fish And Wildlife Office

Federal Building

2800 Cottage Way, Room W-2605

Sacramento, CA 95825-1846

(916) 414-6600

Endangered Species

Proposed, candidate, threatened, and endangered species are managed by the [Endangered Species Program](#) of the U.S. Fish & Wildlife Service.

This USFWS trust resource report is for informational purposes only and should not be used for planning or analyzing project level impacts.

For project evaluations that require USFWS concurrence/review, please return to the IPaC website and request an official species list from the Regulatory Documents section.

[Section 7](#) of the Endangered Species Act **requires** Federal agencies to "request of the Secretary information whether any species which is listed or proposed to be listed may be present in the area of such proposed action" for any project that is conducted, permitted, funded, or licensed by any Federal agency.

A letter from the local office and a species list which fulfills this requirement can only be obtained by requesting an official species list either from the Regulatory Documents section in IPaC or from the local field office directly.

The list of species below are those that may occur or could potentially be affected by activities in this location:

Amphibians

Sierra Nevada Yellow-legged Frog *Rana sierrae* Endangered

CRITICAL HABITAT

There is **final** critical habitat designated for this species.

http://ecos.fws.gov/tess_public/profile/speciesProfile.action?spcode=D04M

Fishes

Lahontan Cutthroat Trout *Oncorhynchus clarkii henshawi* Threatened

CRITICAL HABITAT

No critical habitat has been designated for this species.

http://ecos.fws.gov/tess_public/profile/speciesProfile.action?spcode=E00Y

Critical Habitats

There are no critical habitats in this location

Migratory Birds

Birds are protected by the [Migratory Bird Treaty Act](#) and the [Bald and Golden Eagle Protection Act](#).

Any activity that results in the take of migratory birds or eagles is prohibited unless authorized by the U.S. Fish & Wildlife Service.^[1] There are no provisions for allowing the take of migratory birds that are unintentionally killed or injured.

Any person or organization who plans or conducts activities that may result in the take of migratory birds is responsible for complying with the appropriate regulations and implementing appropriate conservation measures.

1. 50 C.F.R. Sec. 10.12 and 16 U.S.C. Sec. 668(a)

Additional information can be found using the following links:

- Birds of Conservation Concern
<http://www.fws.gov/birds/management/managed-species/birds-of-conservation-concern.php>
- Conservation measures for birds
<http://www.fws.gov/birds/management/project-assessment-tools-and-guidance/conservation-measures.php>
- Year-round bird occurrence data
<http://www.birdscanada.org/birdmon/default/datasummaries.jsp>

The following species of migratory birds could potentially be affected by activities in this location:

Bald Eagle *Haliaeetus leucocephalus*

Bird of conservation concern

Season: Year-round

http://ecos.fws.gov/tess_public/profile/speciesProfile.action?spcode=B008

Black Rosy-finch *Leucosticte atrata*

Bird of conservation concern

Season: Year-round

http://ecos.fws.gov/tess_public/profile/speciesProfile.action?spcode=B0J4

Black Swift *Cypseloides niger*

Bird of conservation concern

Season: Breeding

http://ecos.fws.gov/tess_public/profile/speciesProfile.action?spcode=B0FW

Brewer's Sparrow *Spizella breweri*

Bird of conservation concern

Season: Breeding

http://ecos.fws.gov/tess_public/profile/speciesProfile.action?spcode=B0HA

California Spotted Owl <i>Strix occidentalis occidentalis</i> Season: Year-round http://ecos.fws.gov/tess_public/profile/speciesProfile.action?scode=B08L	Bird of conservation concern
Calliope Hummingbird <i>Stellula calliope</i> Season: Breeding http://ecos.fws.gov/tess_public/profile/speciesProfile.action?scode=B0K3	Bird of conservation concern
Flammulated Owl <i>Otus flammeolus</i> Season: Breeding http://ecos.fws.gov/tess_public/profile/speciesProfile.action?scode=B0DK	Bird of conservation concern
Fox Sparrow <i>Passerella iliaca</i> Season: Year-round	Bird of conservation concern
Greater Sage-grouse <i>Centrocercus urophasianus</i> Season: Year-round http://ecos.fws.gov/tess_public/profile/speciesProfile.action?scode=B06W	Bird of conservation concern
Green-tailed Towhee <i>Pipilo chlorurus</i> Season: Breeding http://ecos.fws.gov/tess_public/profile/speciesProfile.action?scode=B0IO	Bird of conservation concern
Lewis's Woodpecker <i>Melanerpes lewis</i> Season: Year-round http://ecos.fws.gov/tess_public/profile/speciesProfile.action?scode=B0HQ	Bird of conservation concern
Long-billed Curlew <i>Numenius americanus</i> Season: Breeding http://ecos.fws.gov/tess_public/profile/speciesProfile.action?scode=B06S	Bird of conservation concern
Olive-sided Flycatcher <i>Contopus cooperi</i> Season: Breeding http://ecos.fws.gov/tess_public/profile/speciesProfile.action?scode=B0AN	Bird of conservation concern
Peregrine Falcon <i>Falco peregrinus</i> Season: Year-round http://ecos.fws.gov/tess_public/profile/speciesProfile.action?scode=B0FU	Bird of conservation concern
Pinyon Jay <i>Gymnorhinus cyanocephalus</i> Season: Year-round http://ecos.fws.gov/tess_public/profile/speciesProfile.action?scode=B0IO	Bird of conservation concern
Sage Thrasher <i>Oreoscoptes montanus</i> Season: Breeding http://ecos.fws.gov/tess_public/profile/speciesProfile.action?scode=B0ID	Bird of conservation concern
Short-eared Owl <i>Asio flammeus</i> Season: Year-round http://ecos.fws.gov/tess_public/profile/speciesProfile.action?scode=B0HD	Bird of conservation concern

Snowy Plover *Charadrius alexandrinus*

Season: Breeding

Bird of conservation concern

Swainson's Hawk *Buteo swainsoni*

Season: Breeding

Bird of conservation concern

http://ecos.fws.gov/tess_public/profile/speciesProfile.action?spcode=B070

Virginia's Warbler *Vermivora virginiae*

Season: Breeding

Bird of conservation concern

http://ecos.fws.gov/tess_public/profile/speciesProfile.action?spcode=B0IL

Western Grebe *aechmophorus occidentalis*

Season: Year-round

Bird of conservation concern

http://ecos.fws.gov/tess_public/profile/speciesProfile.action?spcode=B0EA

White Headed Woodpecker *Picoides albolarvatus*

Season: Year-round

Bird of conservation concern

http://ecos.fws.gov/tess_public/profile/speciesProfile.action?spcode=B0HU

Williamson's Sapsucker *Sphyrapicus thyroideus*

Season: Year-round

Bird of conservation concern

http://ecos.fws.gov/tess_public/profile/speciesProfile.action?spcode=B0FX

Willow Flycatcher *Empidonax traillii*

Season: Breeding

Bird of conservation concern

http://ecos.fws.gov/tess_public/profile/speciesProfile.action?spcode=B0F6

Wildlife refuges and fish hatcheries

There are no refuges or fish hatcheries in this location

Wetlands in the National Wetlands Inventory

Impacts to [NWI wetlands](#) and other aquatic habitats may be subject to regulation under Section 404 of the Clean Water Act, or other State/Federal statutes.

For more information please contact the Regulatory Program of the local [U.S. Army Corps of Engineers District](#).

DATA LIMITATIONS

The Service's objective of mapping wetlands and deepwater habitats is to produce reconnaissance level information on the location, type and size of these resources. The maps are prepared from the analysis of high altitude imagery. Wetlands are identified based on vegetation, visible hydrology and geography. A margin of error is inherent in the use of imagery; thus, detailed on-the-ground inspection of any particular site may result in revision of the wetland boundaries or classification established through image analysis.

The accuracy of image interpretation depends on the quality of the imagery, the experience of the image analysts, the amount and quality of the collateral data and the amount of ground truth verification work conducted. Metadata should be consulted to determine the date of the source imagery used and any mapping problems.

Wetlands or other mapped features may have changed since the date of the imagery or field work. There may be occasional differences in polygon boundaries or classifications between the information depicted on the map and the actual conditions on site.

DATA EXCLUSIONS

Certain wetland habitats are excluded from the National mapping program because of the limitations of aerial imagery as the primary data source used to detect wetlands. These habitats include seagrasses or submerged aquatic vegetation that are found in the intertidal and subtidal zones of estuaries and nearshore coastal waters. Some deepwater reef communities (coral or tubercid worm reefs) have also been excluded from the inventory. These habitats, because of their depth, go undetected by aerial imagery.

DATA PRECAUTIONS

Federal, state, and local regulatory agencies with jurisdiction over wetlands may define and describe wetlands in a different manner than that used in this inventory. There is no attempt, in either the design or products of this inventory, to define the limits of proprietary jurisdiction of any Federal, state, or local government or to establish the geographical scope of the regulatory programs of government agencies. Persons intending to engage in activities involving modifications within or adjacent to wetland areas should seek the advice of appropriate federal, state, or local agencies concerning specified agency regulatory programs and proprietary jurisdictions that may affect such activities.

This location overlaps all or part of the following wetlands:

Freshwater Emergent Wetland

[PEMA](#)

[PEMAh](#)

[PEMB](#)

[PEMC](#)

[PEMCh](#)

[PEMKx](#)

Freshwater Forested/shrub Wetland

[PSSA](#)

Lake

[L2ABFh](#)

Other

[PUSKx](#)

Riverine

[R2UBH](#)

[R3UBH](#)

A full description for each wetland code can be found at the National Wetlands Inventory website: <http://107.20.228.18/decoders/wetlands.aspx>

Appendices B1 and B2
CNDDDB Results (Plants and Animals) for Two-Quad Query



Selected Elements by Scientific Name

California Department of Fish and Wildlife

California Natural Diversity Database



Query Criteria: Taxonomic Group IS (Ferns OR Gymnosperms OR Monocots OR Dicots OR Lichens OR Bryophytes)
 AND Quad IS (Martis Peak (3912031) OR Truckee (3912032))

Truckee Tahoe Airport Plants

Species	Element Code	Federal Status	State Status	Global Rank	State Rank	Rare Plant Rank/CDFW SSC or FP
<i>Arabis rigidissima</i> var. <i>demota</i> Galena Creek rockcress	PDBRA061R1	None	None	G3T3Q	S1	1B.2
<i>Artemisia tripartita</i> ssp. <i>tripartita</i> threetip sagebrush	PDAST0S1S2	None	None	G5T4T5	S2	2B.3
<i>Botrychium lunaria</i> common moonwort	PPOPH01080	None	None	G5	S2	2B.3
<i>Botrychium minganense</i> Mingan moonwort	PPOPH010R0	None	None	G4G5	S3	2B.2
<i>Carex davyi</i> Davy's sedge	PMCYP033H0	None	None	G3	S3	1B.3
<i>Eriogonum umbellatum</i> var. <i>torreyanum</i> Donner Pass buckwheat	PDPGN086U9	None	None	G5T2	S2	1B.2
<i>Ivesia sericoleuca</i> Plumas ivesia	PDROS0X0K0	None	None	G2	S2	1B.2
<i>Juncus luciensis</i> Santa Lucia dwarf rush	PMJUN013J0	None	None	G3	S3	1B.2
<i>Potamogeton robbinsii</i> Robbins' pondweed	PMPOT030Z0	None	None	G5	S3	2B.3
<i>Rhamnus alnifolia</i> alder buckthorn	PDRHA0C010	None	None	G5	S3	2B.2
<i>Rorippa subumbellata</i> Tahoe yellow cress	PDBRA270M0	None	Endangered	G1	S1	1B.1
<i>Scutellaria galericulata</i> marsh skullcap	PDLAM1U0J0	None	None	G5	S2	2B.2

Record Count: 12



Selected Elements by Scientific Name
California Department of Fish and Wildlife
California Natural Diversity Database



Query Criteria: Taxonomic Group IS (Fish OR Amphibians OR Reptiles OR Birds OR Mammals OR Mollusks OR Arachnids OR Crustaceans OR Insects)
 AND Quad IS (Martis Peak (3912031) OR Truckee (3912032))

Truckee Tahoe Airport Animals

Species	Element Code	Federal Status	State Status	Global Rank	State Rank	Rare Plant Rank/CDFW SSC or FP
<i>Accipiter gentilis</i> northern goshawk	ABNKC12060	None	None	G5	S3	SSC
<i>Ambystoma macrodactylum sigillatum</i> southern long-toed salamander	AAAAA01085	None	None	G5T4	S3	SSC
<i>Aplodontia rufa californica</i> Sierra Nevada mountain beaver	AMAF01013	None	None	G5T3T4	S2S3	SSC
<i>Bombus morrisoni</i> Morrison bumble bee	IIHYM24460	None	None	G4G5	S1S2	
<i>Bombus occidentalis</i> western bumble bee	IIHYM24250	None	None	G2G3	S1	
<i>Empidonax traillii</i> willow flycatcher	ABPAE33040	None	Endangered	G5	S1S2	
<i>Lepus americanus tahoensis</i> Sierra Nevada snowshoe hare	AMAEB03012	None	None	G5T3T4Q	S2?	SSC
<i>Margaritifera falcata</i> western pearlshell	IMBIV27020	None	None	G4G5	S1S2	
<i>Oncorhynchus clarkii henshawi</i> Lahontan cutthroat trout	AFCHA02081	Threatened	None	G4T3	S2	
<i>Rana sierrae</i> Sierra Nevada yellow-legged frog	AAABH01340	Endangered	Threatened	G1	S1	WL
<i>Setophaga petechia</i> yellow warbler	ABPBX03010	None	None	G5	S3S4	SSC
<i>Vulpes vulpes necator</i> Sierra Nevada red fox	AMAJA03012	Candidate	Threatened	G5T1T2	S1	

Record Count: 12