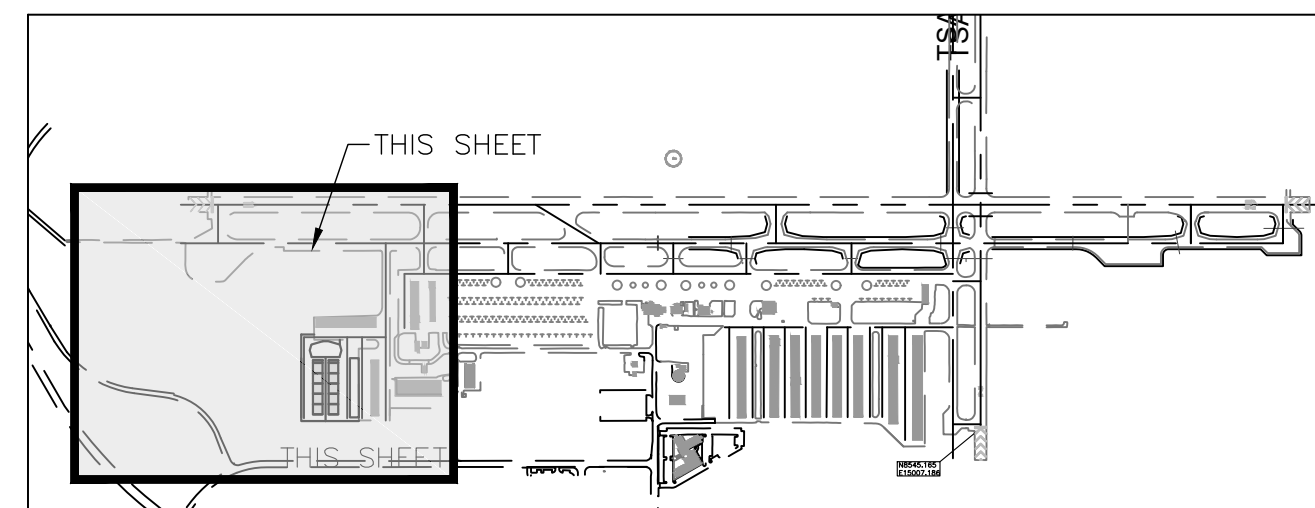
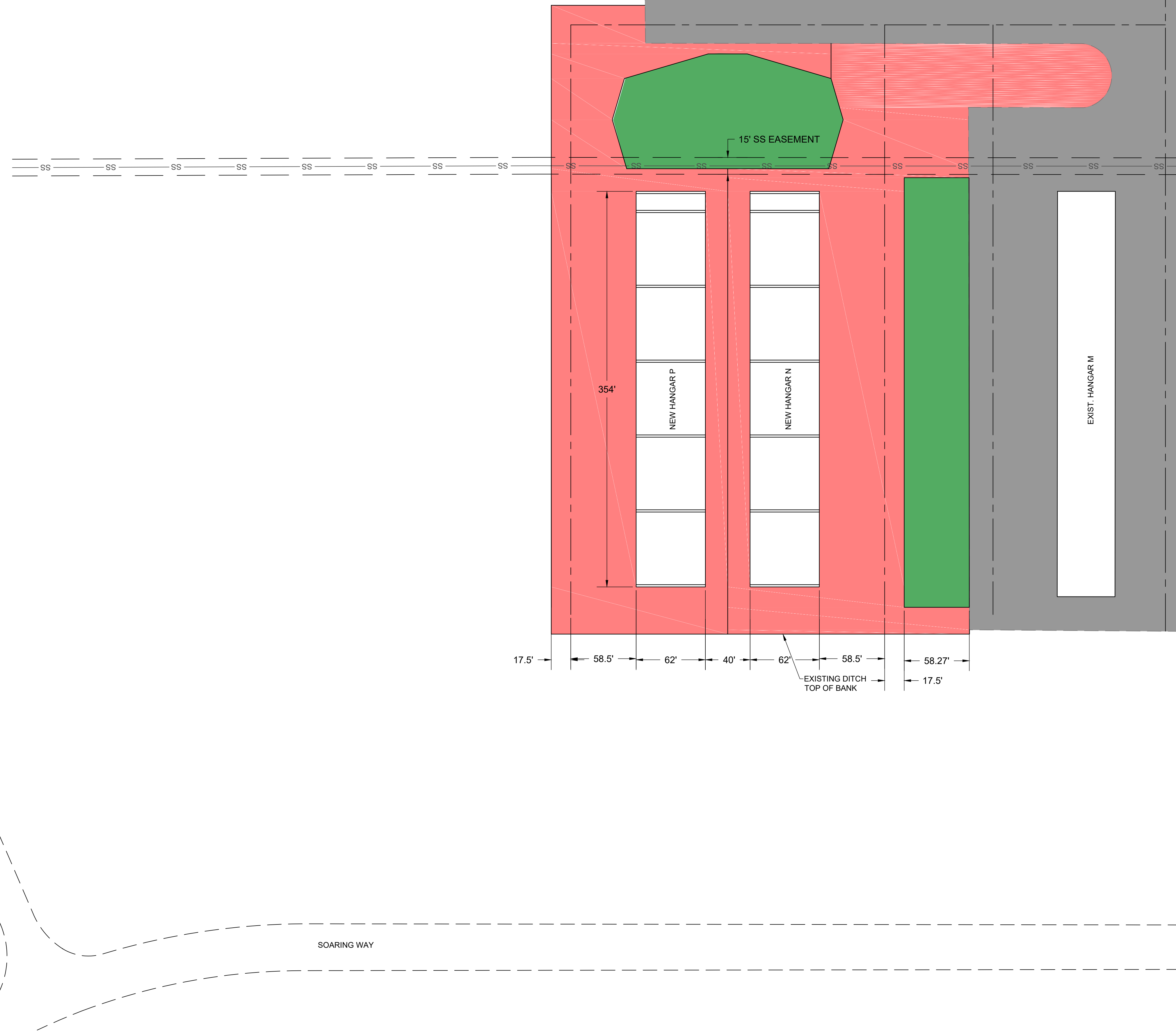
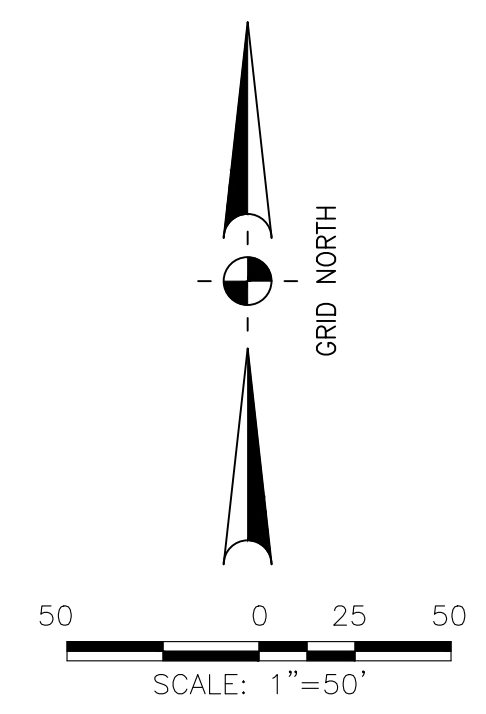


G:\40 TRUCKEE\26 HANGAR\BASE\DMASTER 4026 ULTIMATE DEVELOPMENT 5 HANGARS.DWG PLOTTED BY Damon Brandley 6/1/2017 5:30 PM

- LEGEND**
- EXISTING PAVEMENT
 - NEW PAVEMENT - PHASE 1 BASE BID PLUS ALTERNATE A
 - LANDSCAPE ISLAND
 - CENTERLINE
 - EXISTING EDGE OF PAVEMENT
 - NEW EDGE OF PAVEMENT
 - SS EXISTING SEWER LINE & EASEMENT



LOCATION MAP



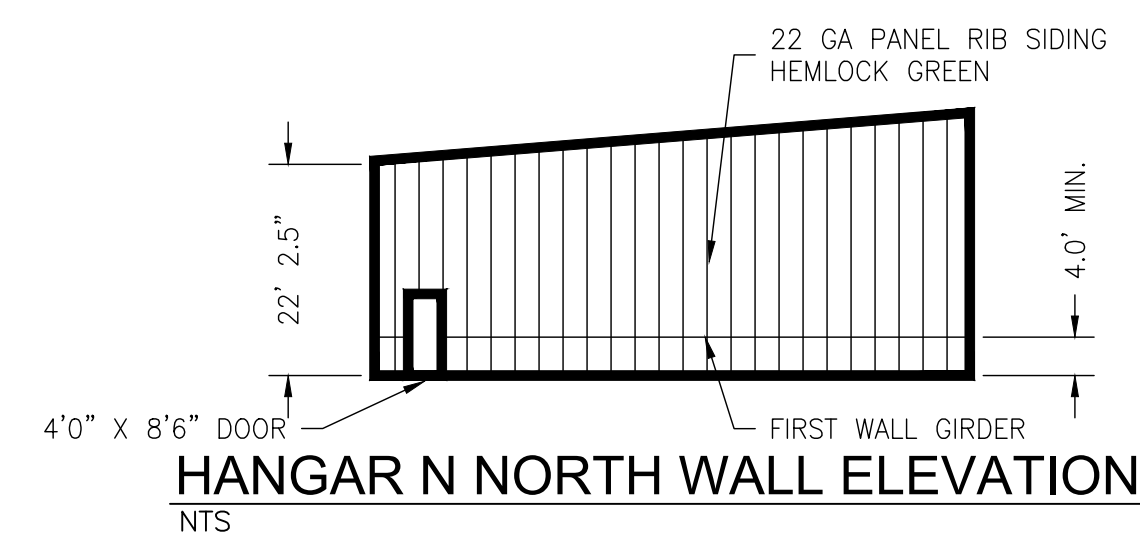
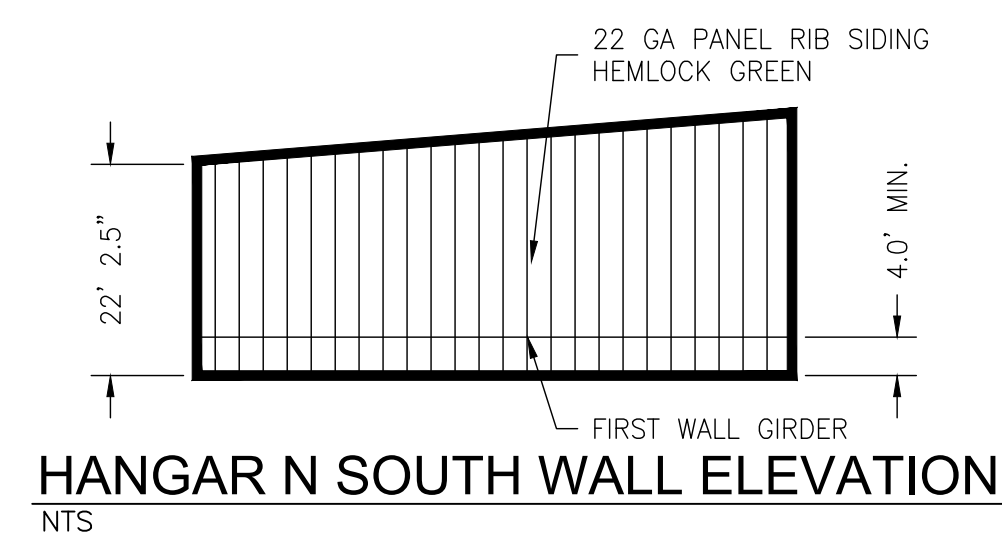
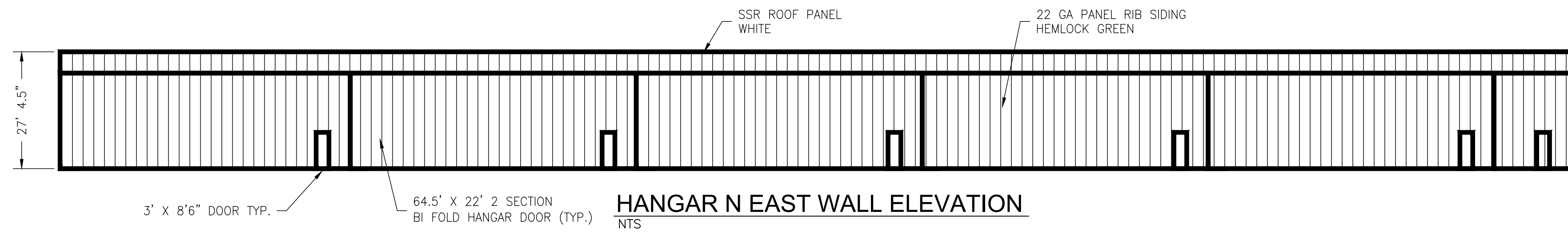
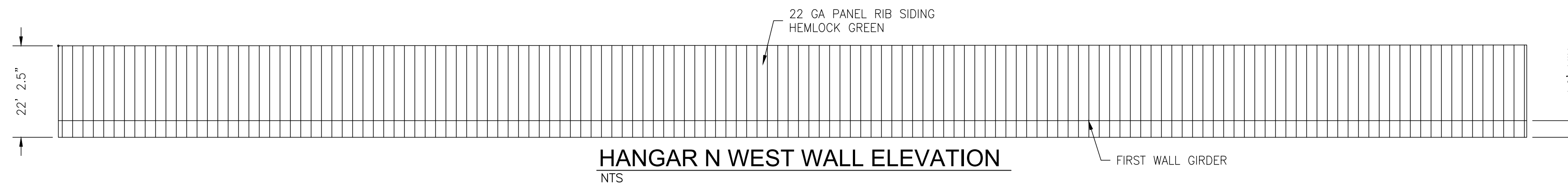
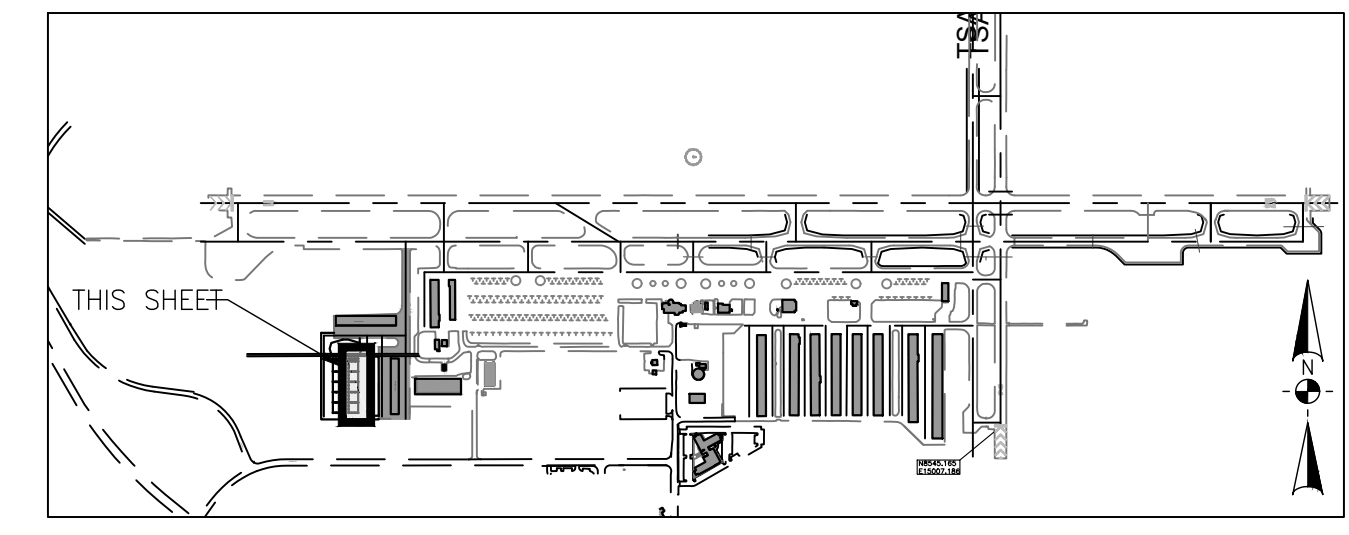
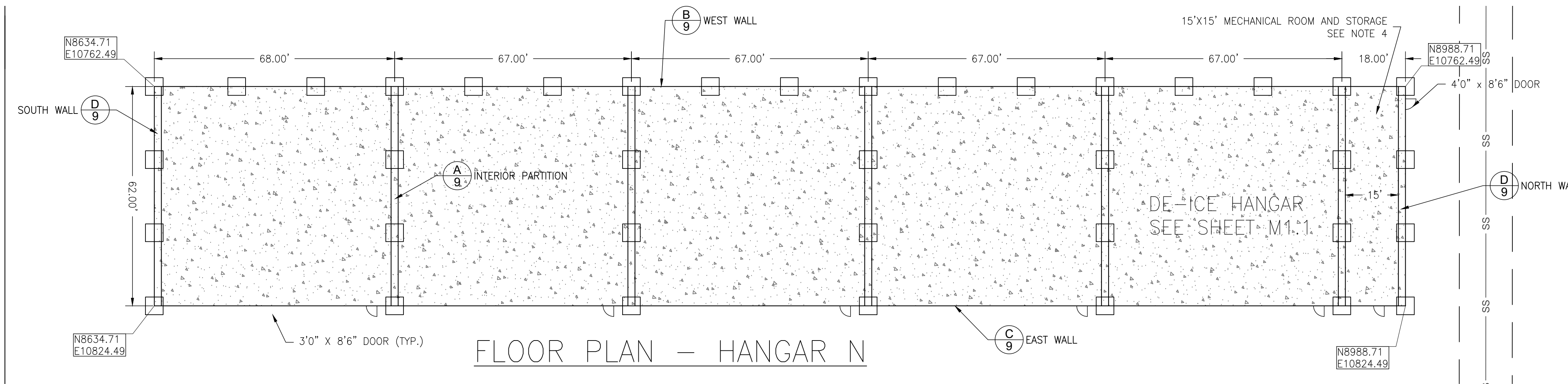
Reinard W. Brandley
 CONSULTING AIRPORT ENGINEER
 6125 King Road, Suite 201 - Loomis, California 95650 - (916) 652-4725

No.	REVISIONS	BY	APR	DATE	ENGINEER OF RECORD

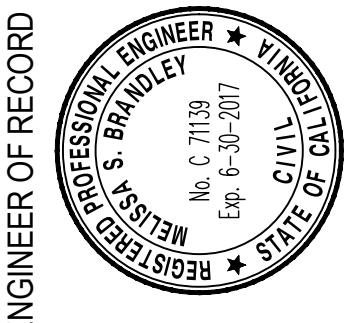
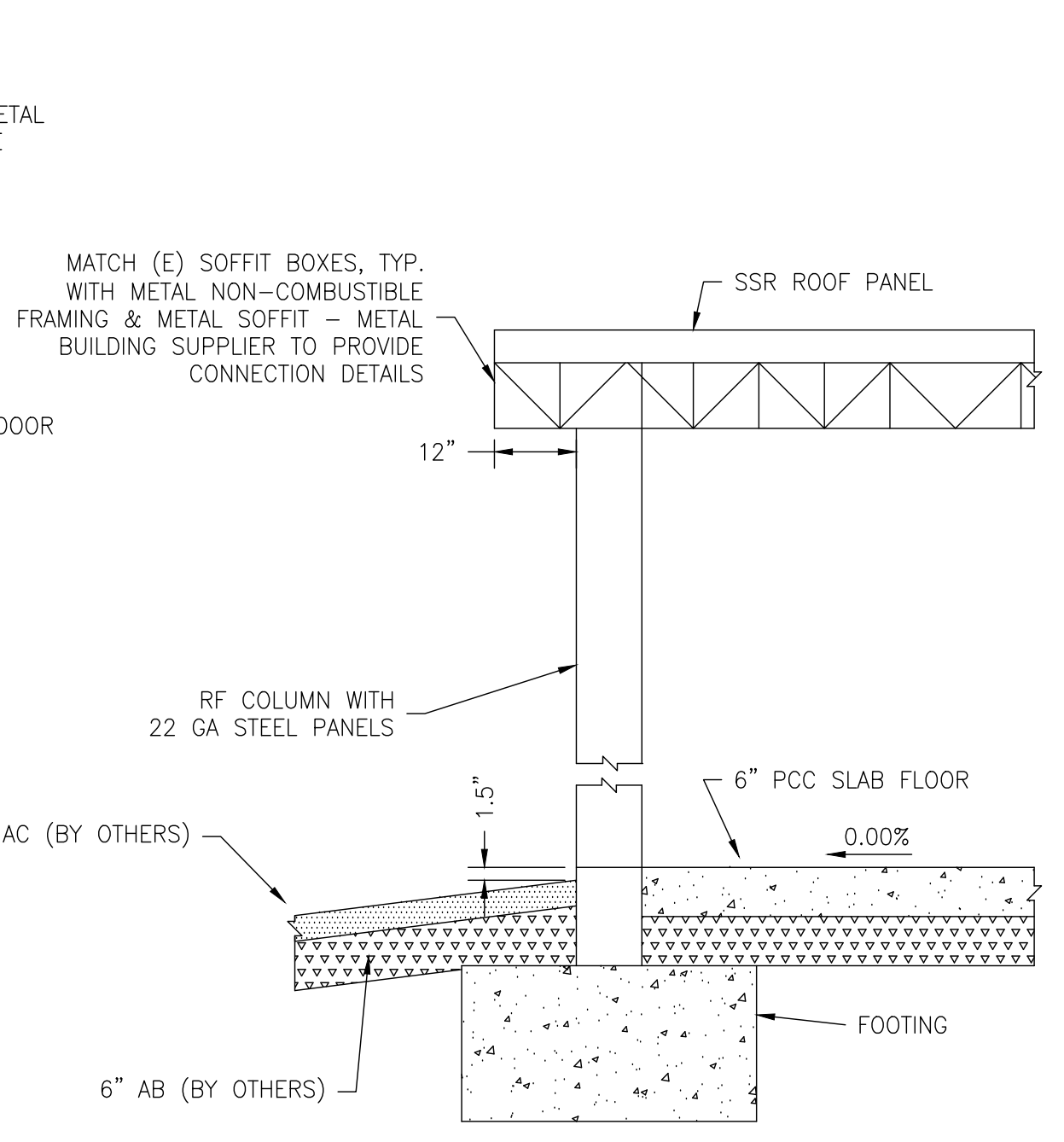
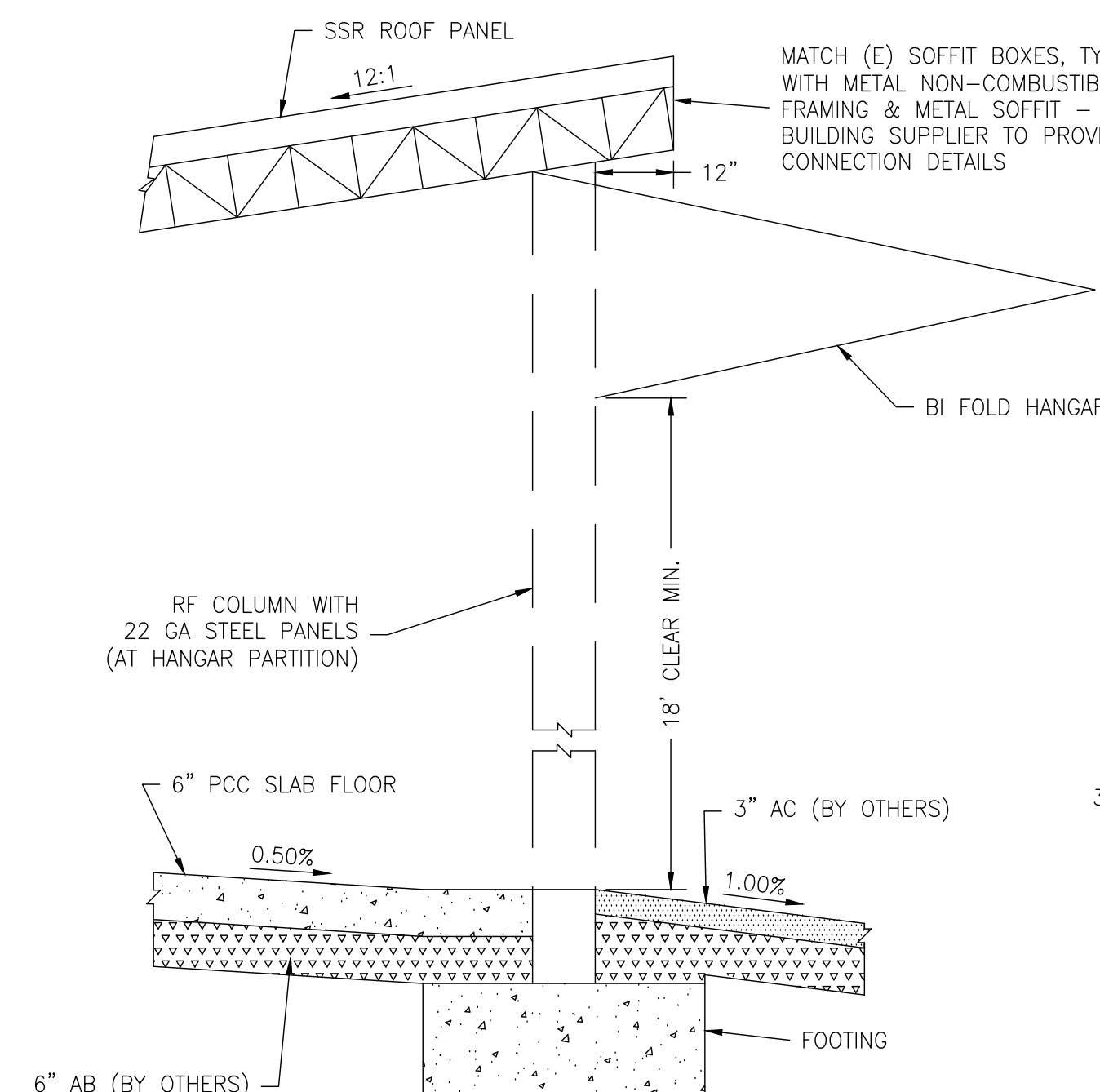
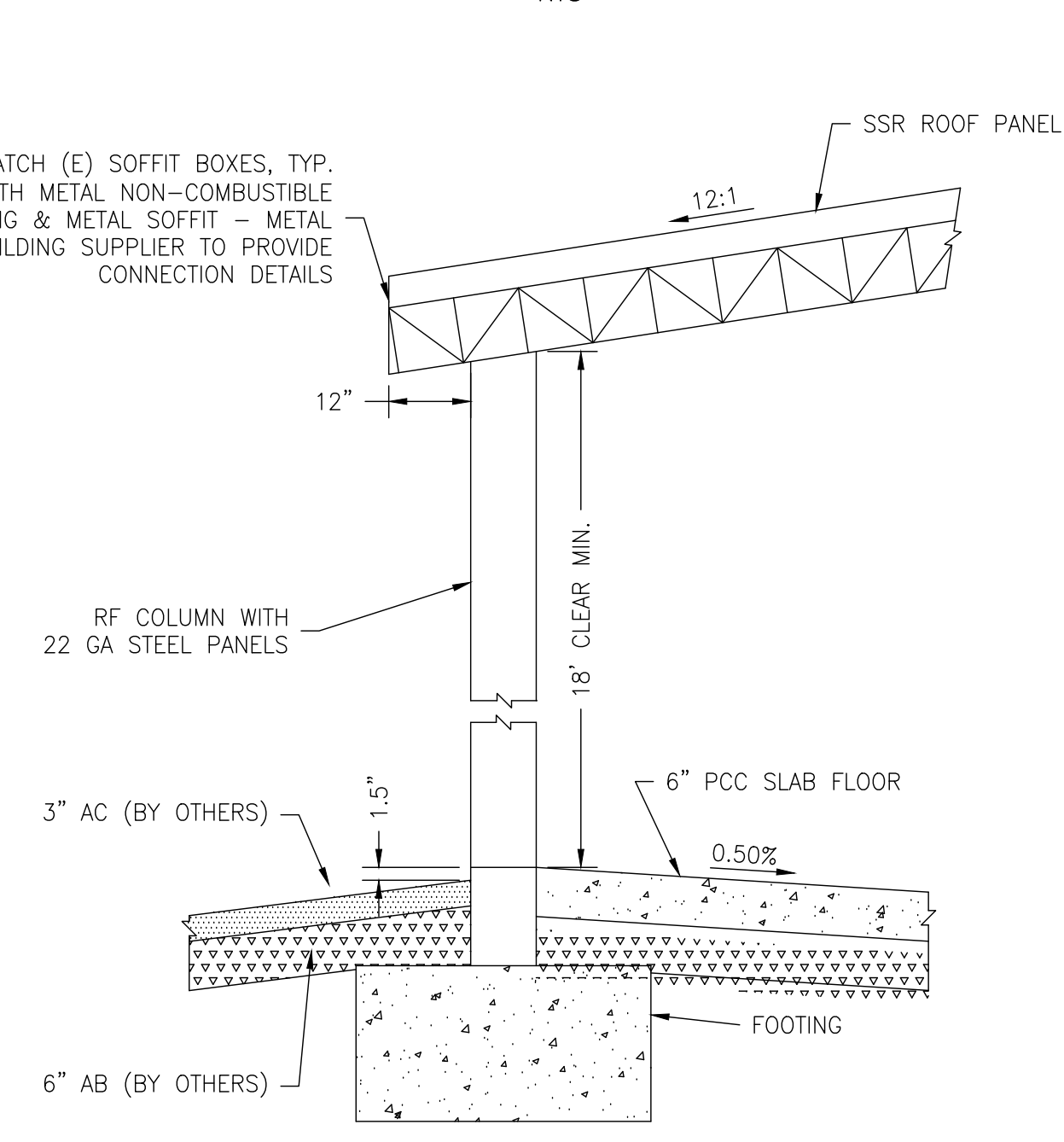
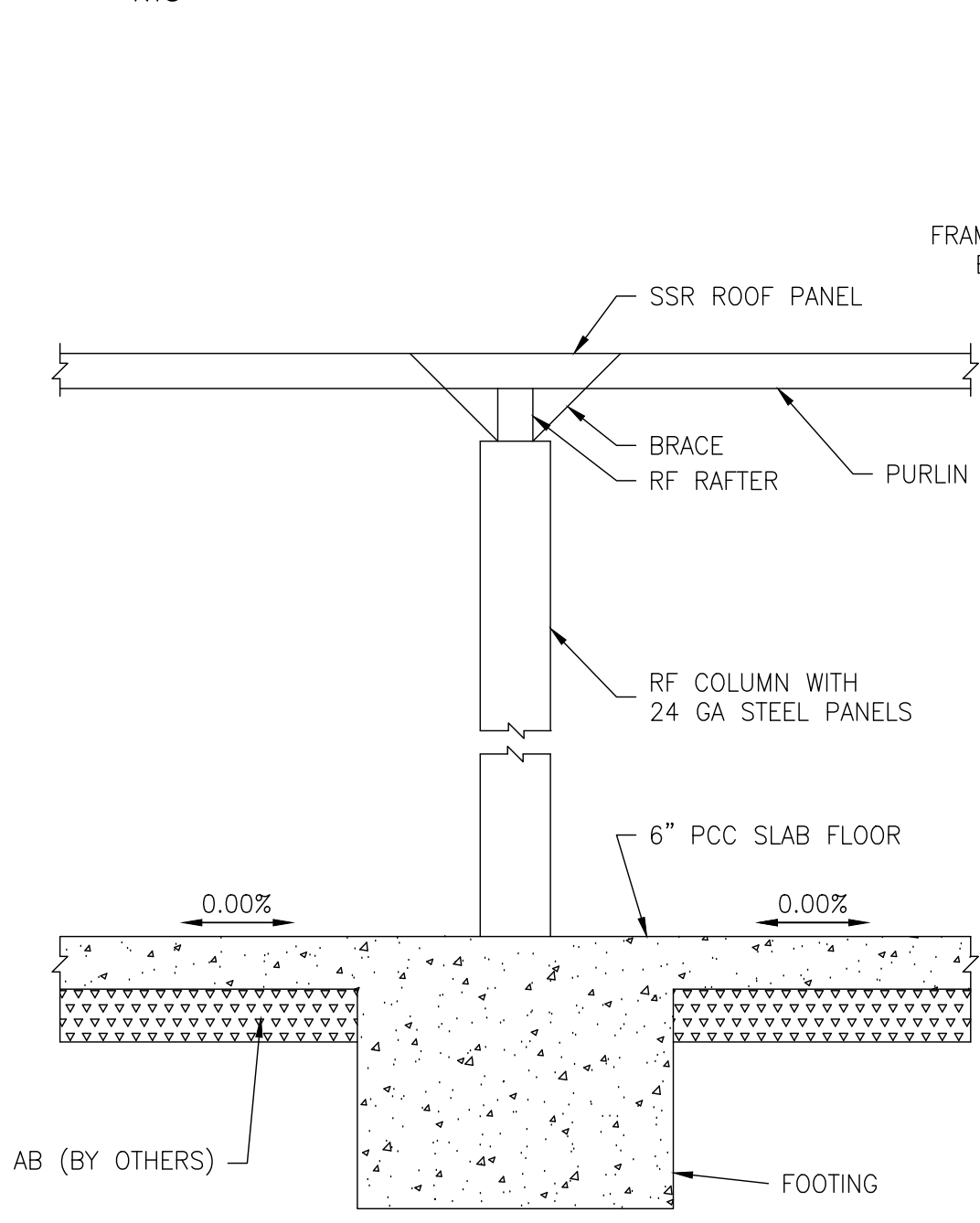
TRUCKEE, CALIFORNIA
TRUCKEE TAHOE AIRPORT
EXECUTIVE HANGAR DEVELOPMENT
OVERALL LAYOUT PLAN - PHASE 1

DATE	JUNE 1, 2017
DRAWN	DB
CHECKED	RWB
PROJECT No.	---
SCALE	1"=50'
SHEET No.	1 OF 1

master 4026 Ultimate Development 5 hangars



- GENERAL NOTES:**
- FOUNDATIONS SHOWN ARE TYPICAL REPRESENTATION OF SPACING. ACTUAL FOUNDATION SPACING AND DESIGN SHALL BE AS REQUIRED BY THE BUILDING AND SHALL BE DESIGNED BY THE CONTRACTOR.
 - WALL DETAILS SHOWN ARE TYPICAL REPRESENTATIONS. FINAL DESIGN AND STRUCTURAL REQUIREMENTS ARE THE RESPONSIBILITY OF THE CONTRACTOR.
 - EXTERIOR VERTICAL WALLS AND DOORS SHALL BE PAINTED HEMLOCK GREEN TO MATCH COLOR ON EXISTING HANGAR L. ALL ROOF PANELS SHALL BE PAINTED WHITE.
 - MECHANICAL ROOM SHALL BE 15'X15', AN 18" PCC CURB SHALL SEPARATE MECHANICAL ROOM FROM ADJACENT HANGAR WITH 1 HOUR FIRE WALLS AND 9' HIGH MINIMUM CEILING. FOR UTILITY WORK SEE SHEETS E1 & M1.1.
- MINIMUM REQUIREMENTS:**
- MINIMUM REQUIREMENTS GIVEN ARE FOR EACH HANGAR SPACE. CONTRACTOR SHALL DESIGN BUILDING TO PROVIDE 6 HANGAR SPACES WITH SPECIFIC MINIMUM CLEARANCE.
 - CLEAR OPENING WIDTH - 64.5' MINIMUM
 - HANGAR DEPTH - 61' MINIMUM
 - CLEAR DOOR HEIGHT - 18' MINIMUM
 - CLEAR DOOR WIDTH - 64.5' MINIMUM



ENGINEER OF RECORD

NO.	REVISIONS	BY	DATE

TRUCKEE CALIFORNIA

TRUCKEE TAHOE AIRPORT

EXECUTIVE HANGAR DEVELOPMENT - PHASE 1

HANGAR BUILDINGS

BUILDING PLAN AND DETAILS - HANGAR N

DATE: JUNE 1, 2017

DRAWN: MSB

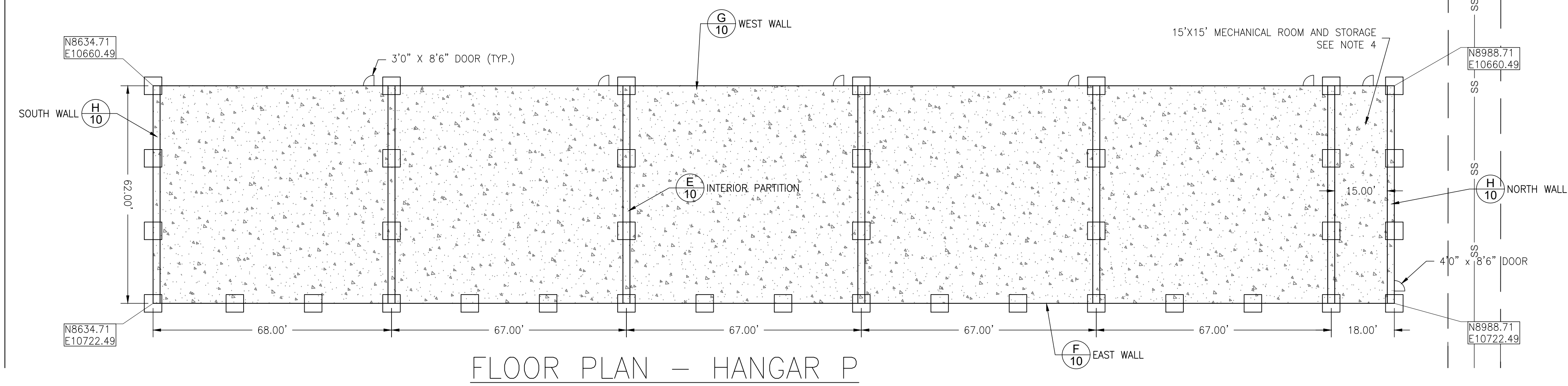
CHECKED: RWB

PROJECT No. ---

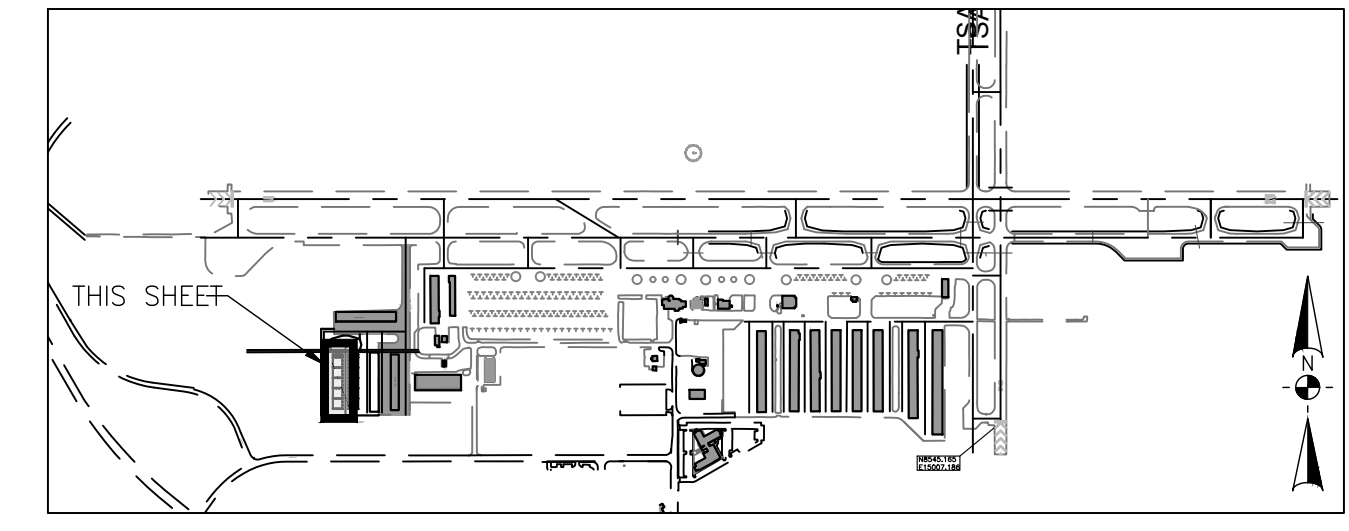
Building details 5 Hangars

SCALE: 1"=20'

SHEET No. ---



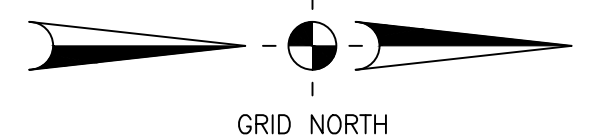
FLOOR PLAN - HANGAR P



LOCATION MAP

LEGEND

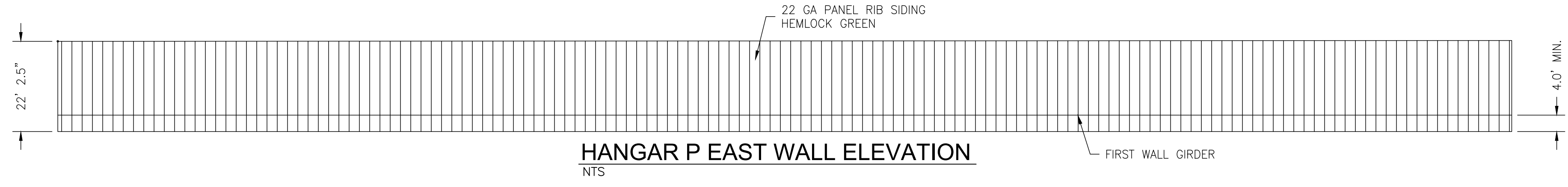
- N9738.46
E13727.35
22.00 AIRPORT GRID COORDINATE FINISHED GRADE ELEVATION
- NEW PCC SLAB
- NEW EDGE OF PCC SLAB
- SS EXISTING SEWER LINE & EASEMENT
- NEW BUILDING FOUNDATION



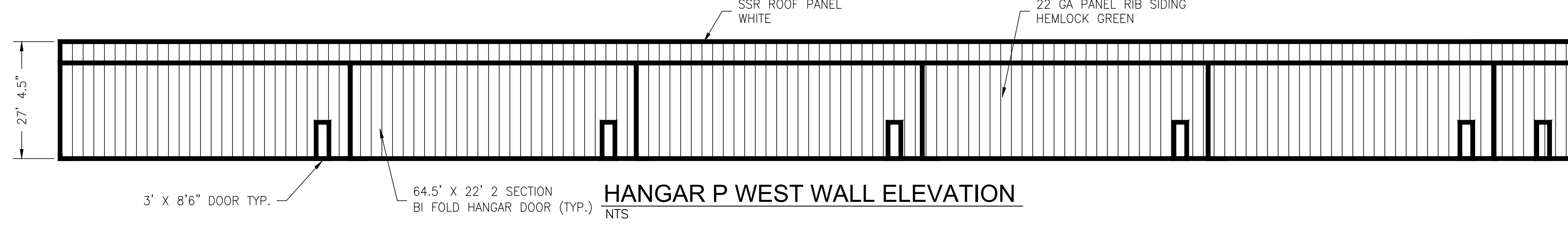
GENERAL NOTES:

1. FOUNDATIONS SHOWN ARE TYPICAL REPRESENTATION OF SPACING. ACTUAL FOUNDATION SPACING AND DESIGN SHALL BE AS REQUIRED BY THE BUILDING AND SHALL BE DESIGNED BY THE CONTRACTOR.
2. WALL DETAILS SHOWN ARE TYPICAL REPRESENTATIONS. FINAL DESIGN AND STRUCTURAL REQUIREMENTS ARE THE RESPONSIBILITY OF THE CONTRACTOR.
3. EXTERIOR VERTICAL WALLS AND DOORS SHALL BE PAINTED HEMLOCK GREEN TO MATCH COLOR ON EXISTING HANGAR L. ALL ROOF PANELS SHALL BE PAINTED WHITE.
4. MECHANICAL ROOM SHALL BE 15'x15'. AN 18" PCC CURB SHALL SEPARATE MECHANICAL ROOM FROM ADJACENT HANGAR WITH 1 HOUR FIRE WALLS AND 9' HIGH MINIMUM CEILING. FOR UTILITY WORK SEE SHEETS E1 & M1.1.
5. MINIMUM REQUIREMENTS:

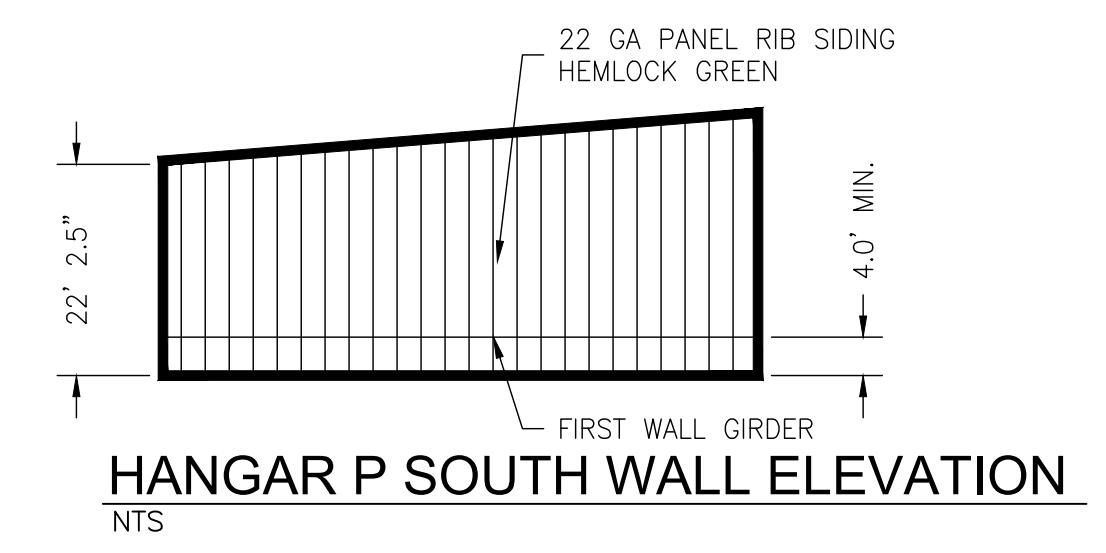
1. MINIMUM REQUIREMENTS GIVEN ARE FOR EACH HANGAR SPACE. CONTRACTOR SHALL DESIGN BUILDING TO PROVIDE 6 HANGAR SPACES WITH SPECIFIC MINIMUM CLEARANCE.
 - 1.1. CLEAR OPENING WIDTH - 64.5' MINIMUM
 - 1.2. HANGAR DEPTH - 61' MINIMUM
 - 1.3. CLEAR DOOR HEIGHT - 18' MINIMUM
 - 1.4. CLEAR DOOR WIDTH - 64.5' MINIMUM



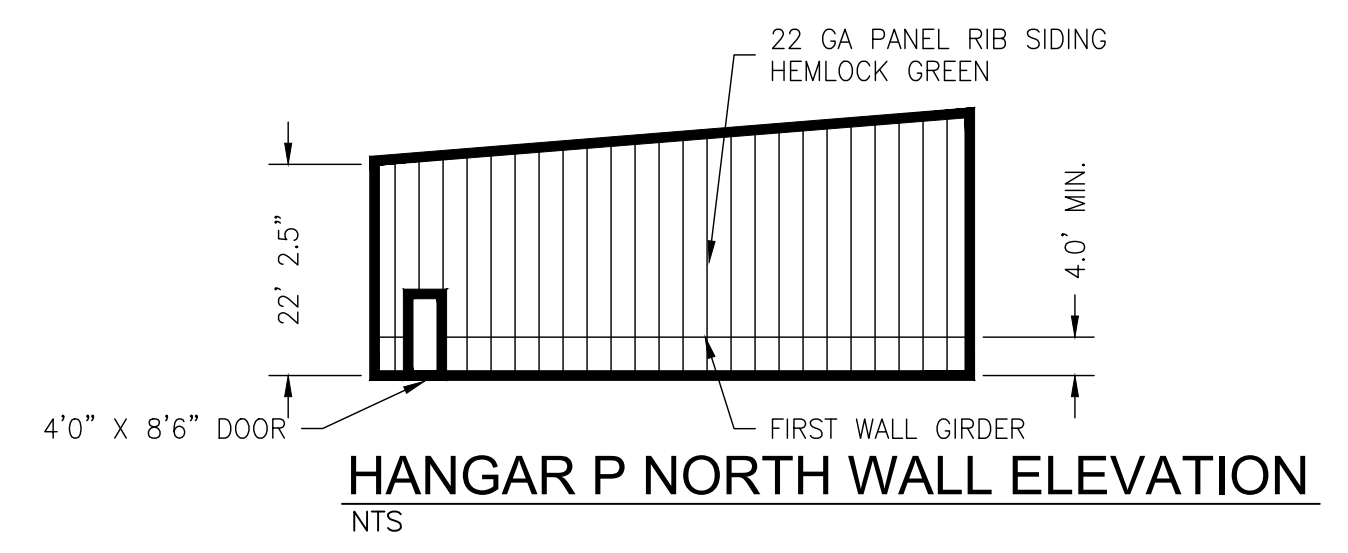
HANGAR P EAST WALL ELEVATION



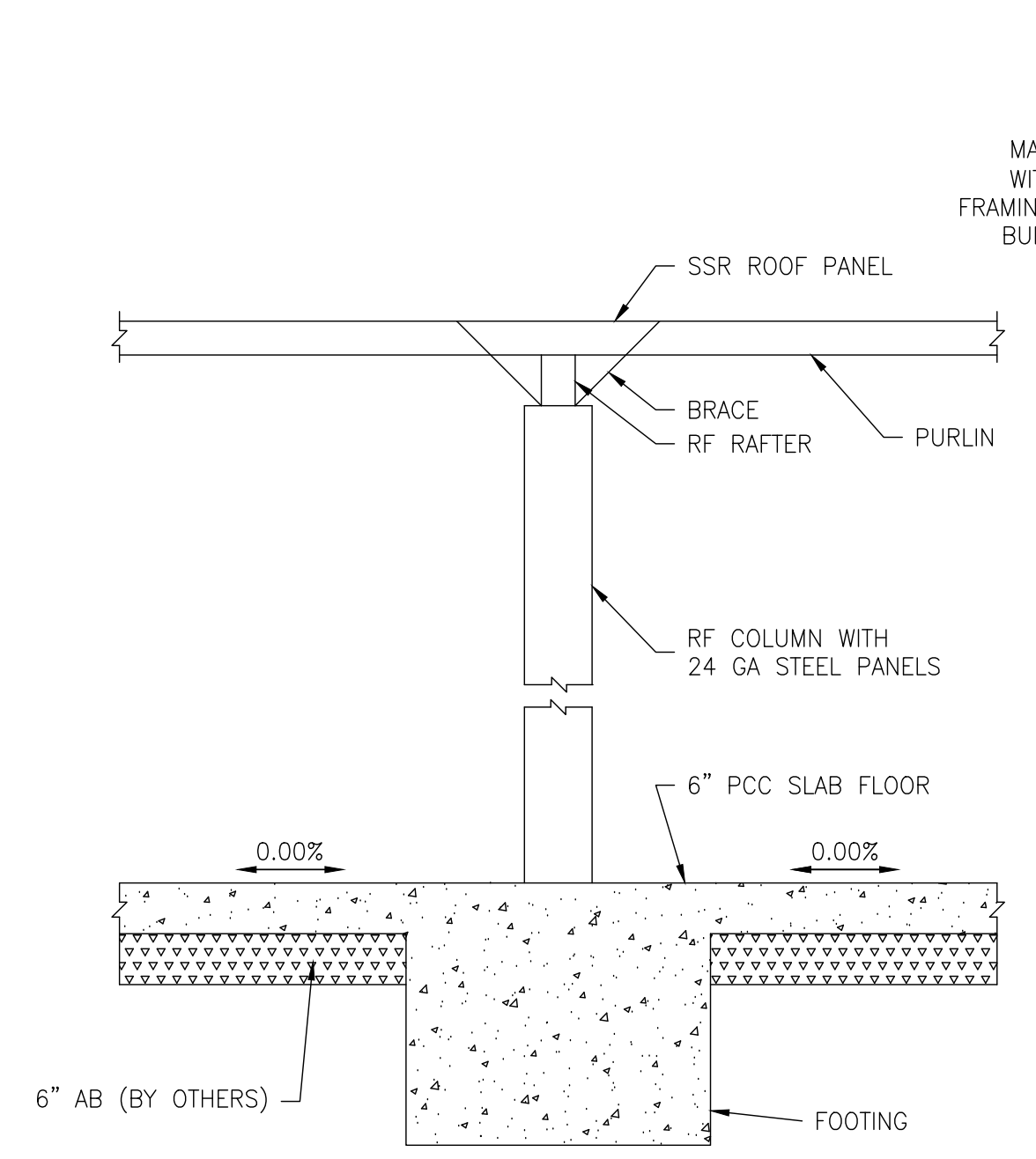
HANGAR P WEST WALL ELEVATION



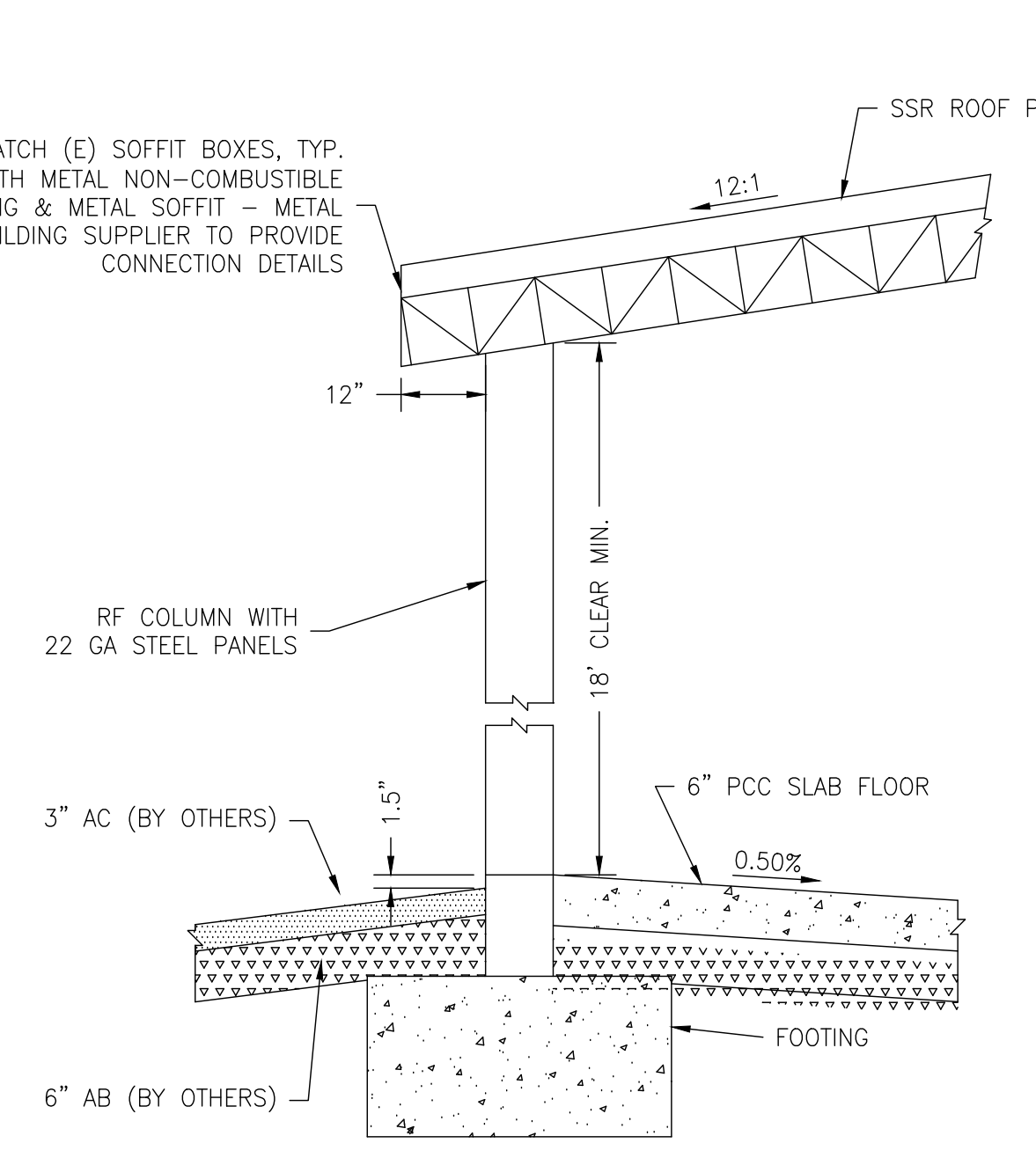
HANGAR P SOUTH WALL ELEVATION



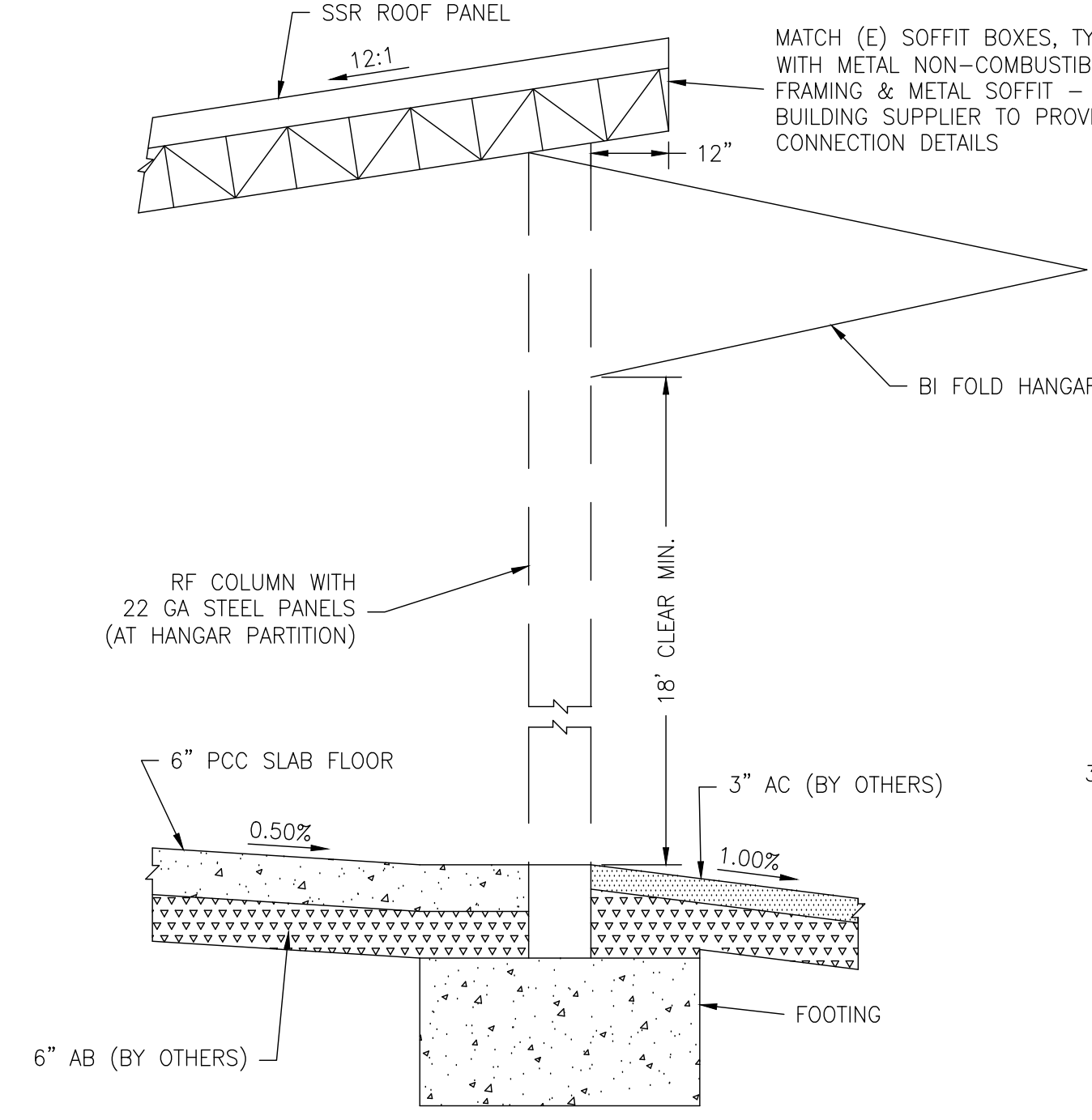
HANGAR P NORTH WALL ELEVATION



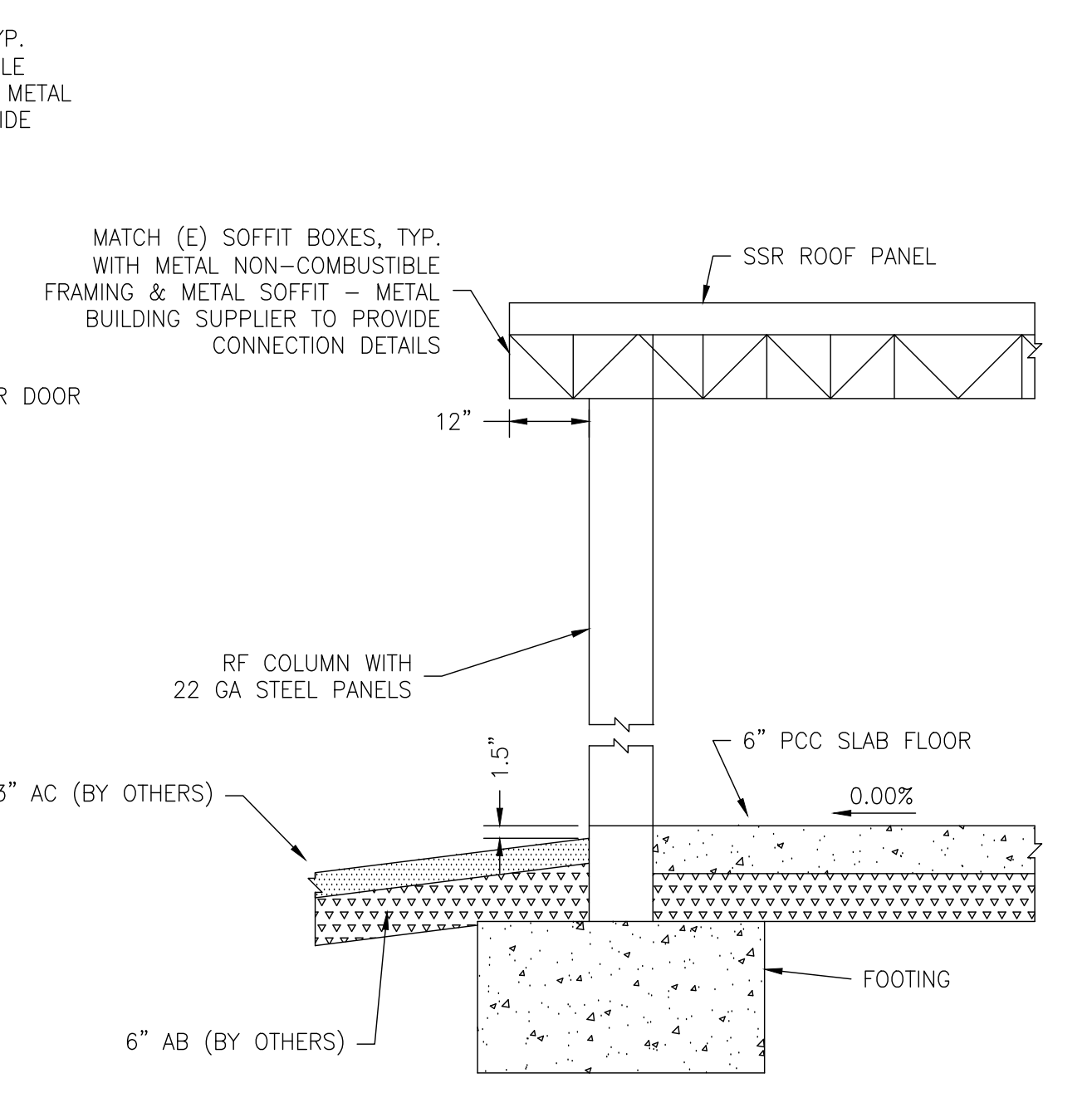
E TYPICAL INTERIOR PARTITION DETAIL



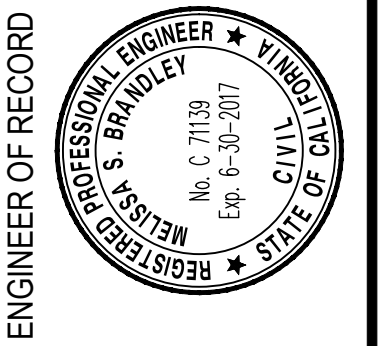
F EAST WALL DETAIL



G WEST WALL DETAIL



H NORTH & SOUTH WALL DETAIL



ENGINEER OF RECORD

NO.	REVISIONS	BY	DATE

TRUCKEE CALIFORNIA
TRUCKEE TAHOE AIRPORT
 EXECUTIVE HANGAR DEVELOPMENT - PHASE 1
 HANGAR BUILDINGS
 BUILDING PLAN AND DETAILS - HANGAR P

DATE	APRIL 4, 2017
DRAWN	MSB
CHECKED	RWB
PROJECT No.	---
Building details 5 Hangars	---
SCALE	1"=20'
SHEET No.	10 of 10

ALTERNATE A

PLOTTED BY Damon Brandley 6/12/2017 5:31 PM

G:\40 TRUCKEE\20 HANGARS\4026-1.08 BUILDING DETAILS 5 HANGARS.DWG

Reinard W. Brandley
CONSULTING AIRPORT ENGINEER
6125 King Road, Suite 201 - Loomis, California 95650 - (916) 652-4725