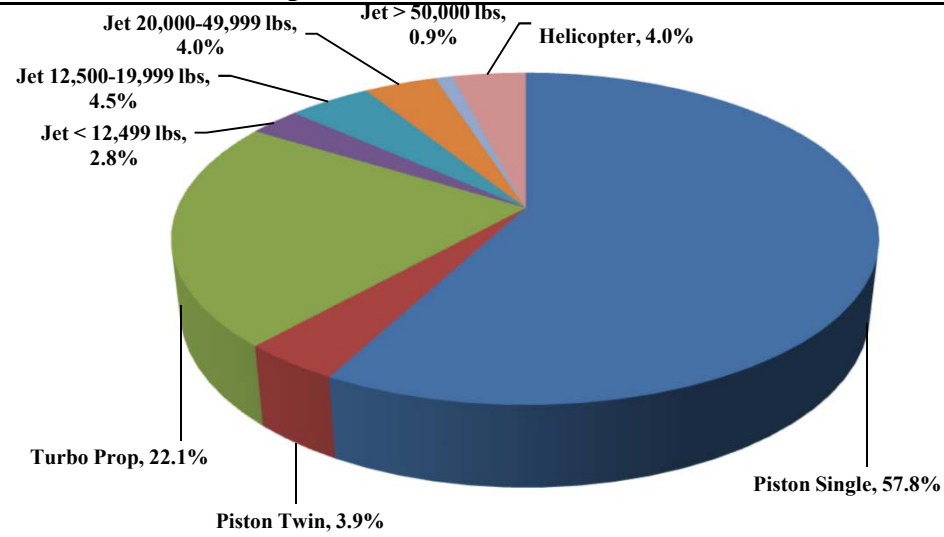




TRUCKEE TAHOE AIRPORT DISTRICT Operations and Community Comment Report as of 6/30/17

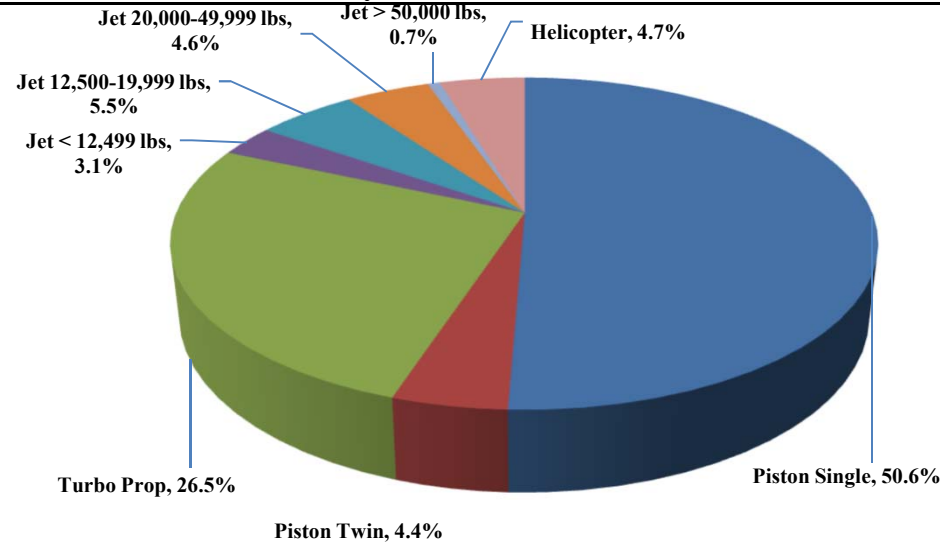


Current Quarter | Operations
April 1, 2017 - June 30, 2017



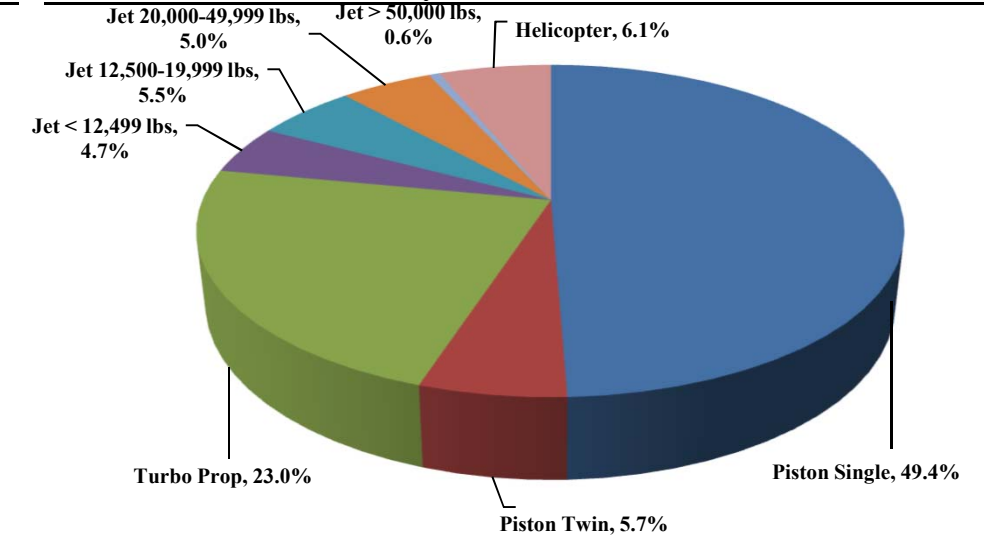
Total Powered Aircraft 6,764

Year-to-Date | Operations
January 1, 2017 - June 30, 2017



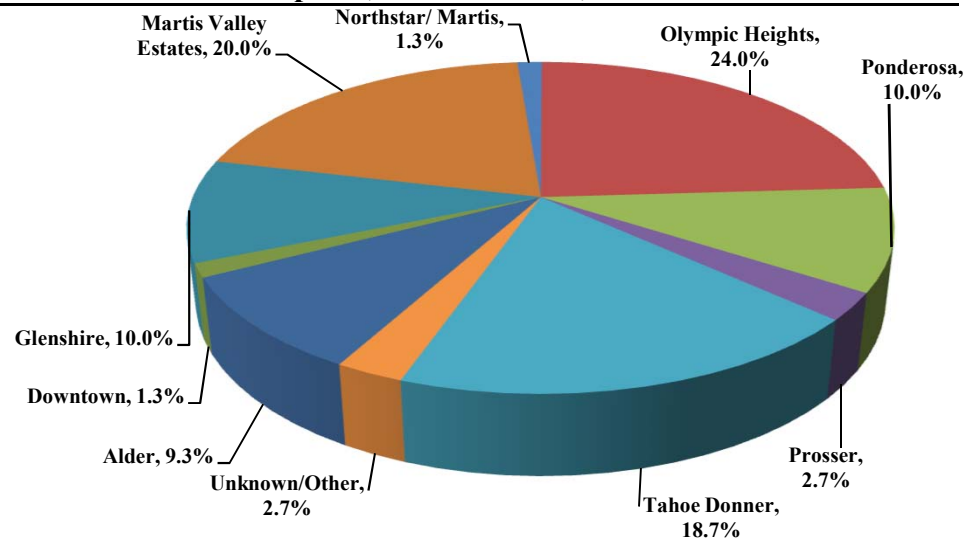
Total Powered Aircraft 10,911

Historic | Operations
January 1, 2013 - June 30, 2017



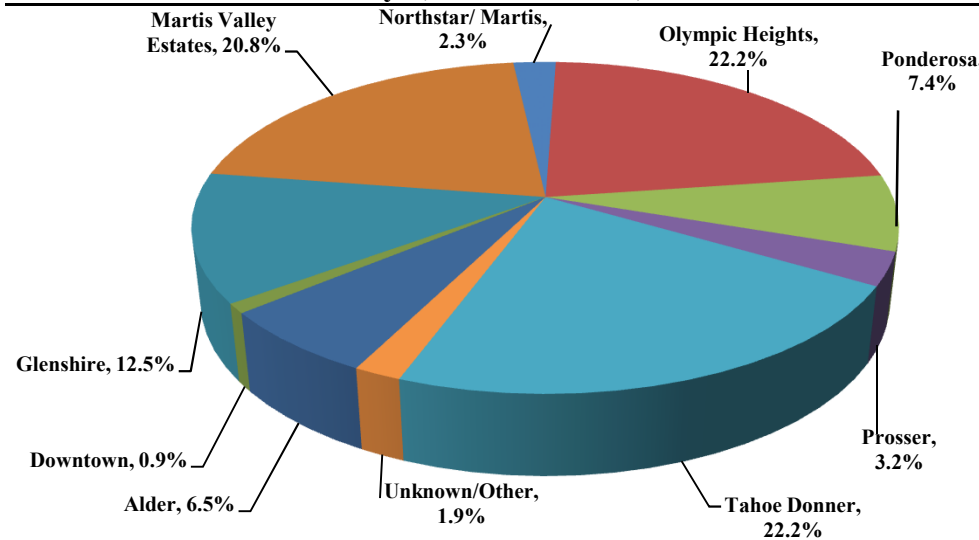
Total Powered Aircraft 94,764

Current Quarter | Comments
April 1, 2017 - June 30, 2017



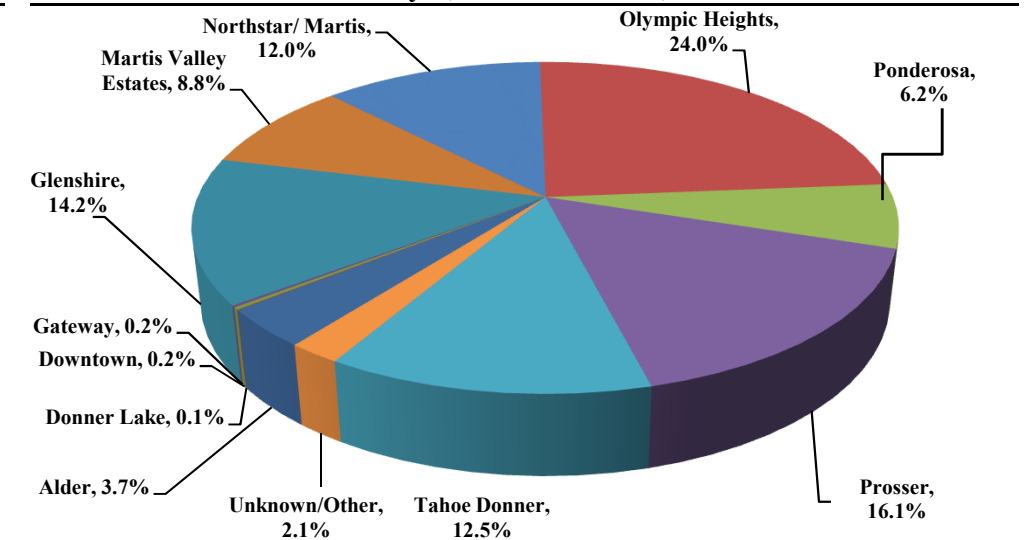
Total Comments 150
Operations / Comment 51

Year-to-Date | Comments
January 1, 2017 - June 30, 2017



Total Comments 216
Operations / Comment 55

Historic | Comments
January 1, 2013 - June 30, 2017



Total Comments 1,750
Operations / Comment 66

Notes

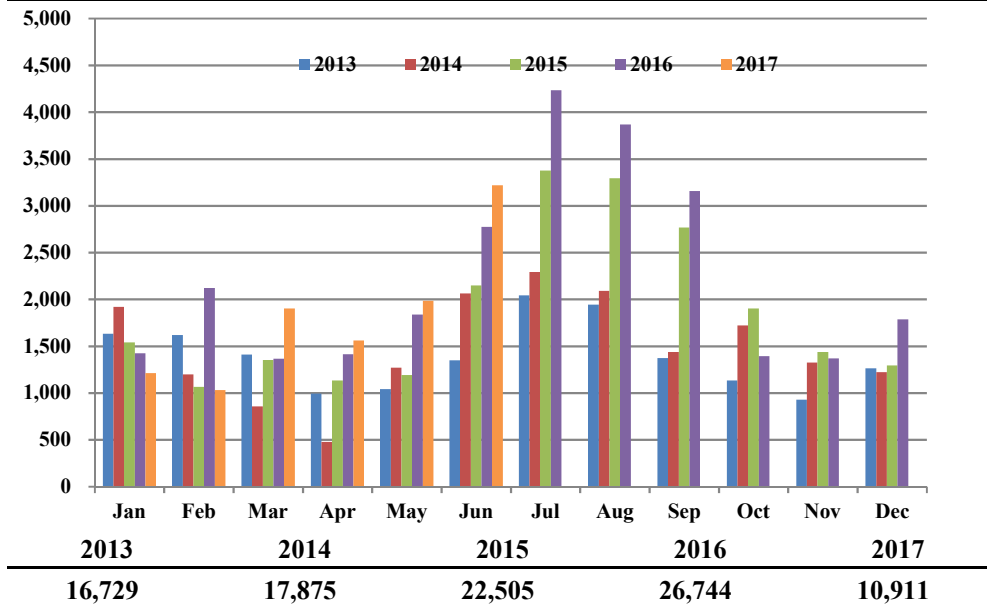
April 2014 - Launched new TTAD Website with 'Report Noise' link.
Operations graphs above use Total Powered Aircraft. Glider operations are not included.
Jets > 50,000lbs subcategory was added in Q1 2015. Reporting and analysis prior to 2015 is not included.



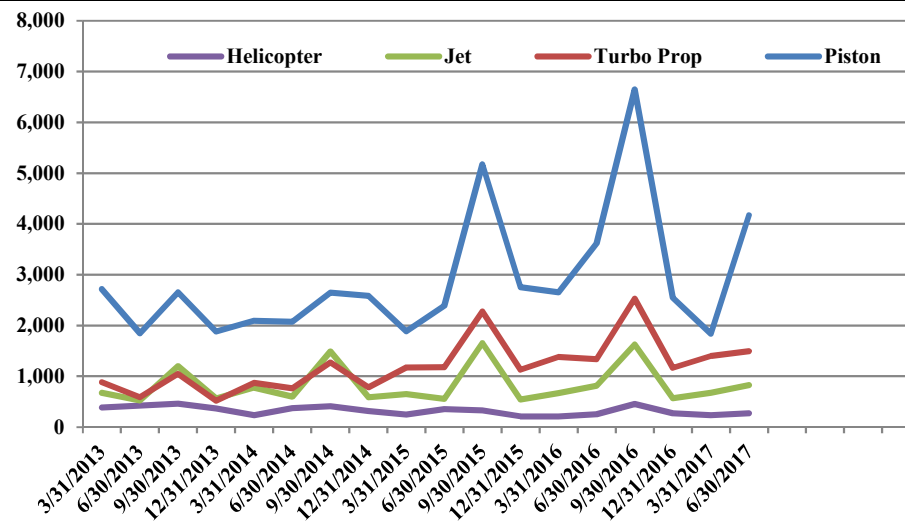
TRUCKEE TAHOE AIRPORT DISTRICT Operations and Community Comment Report as of 6/30/17



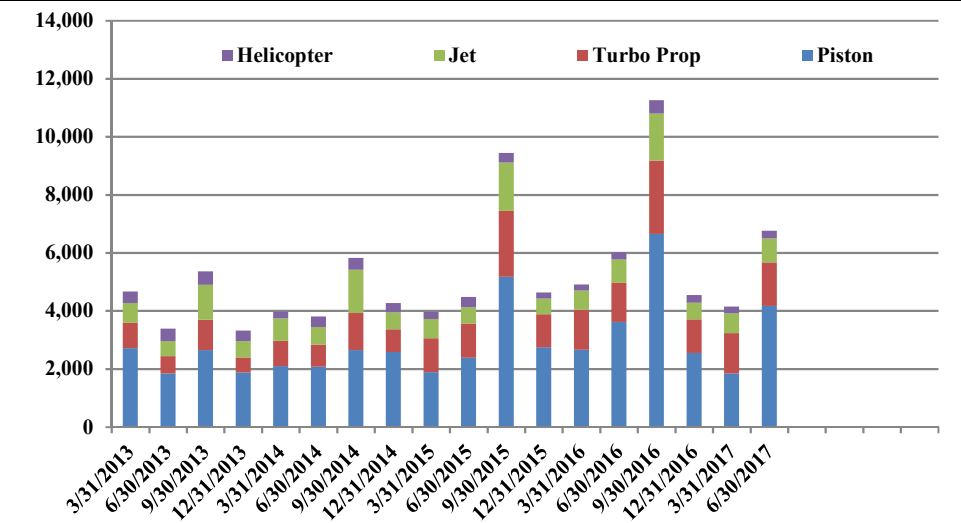
Operations | by Month by Year
January 1, 2013 - June 30, 2017



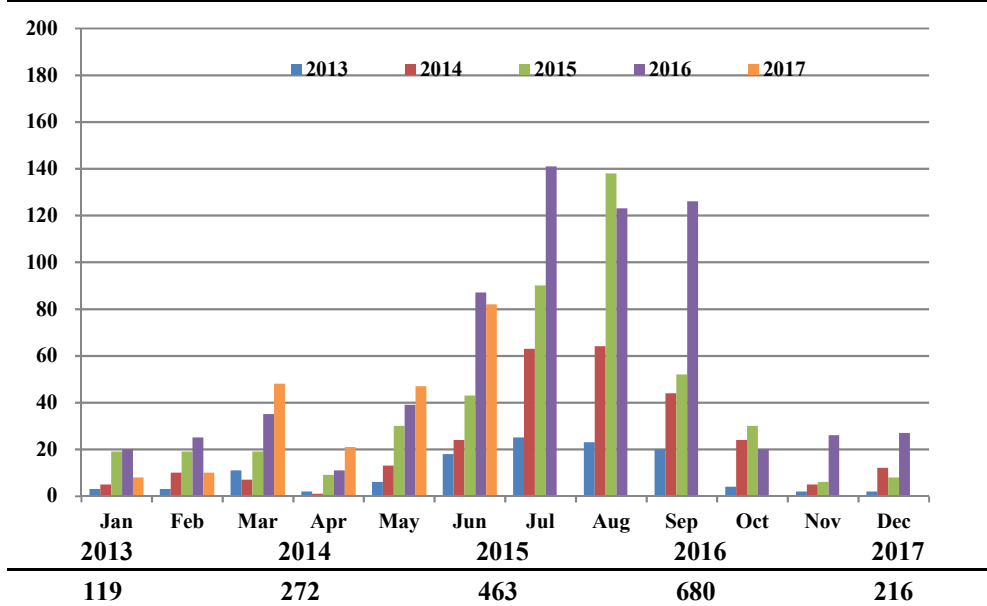
Operations | by Type by Quarter
January 1, 2013 - June 30, 2017



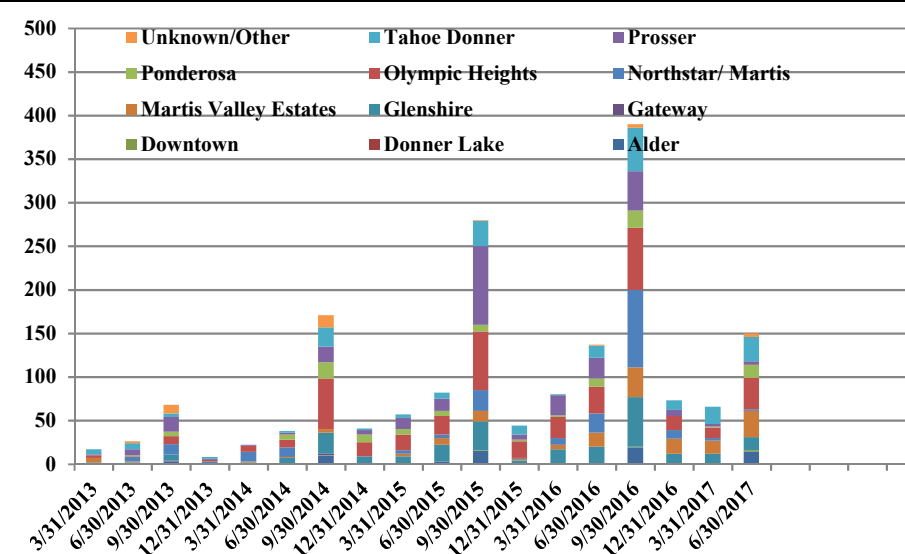
Operations | Mix by Type by Quarter
January 1, 2013 - June 30, 2017



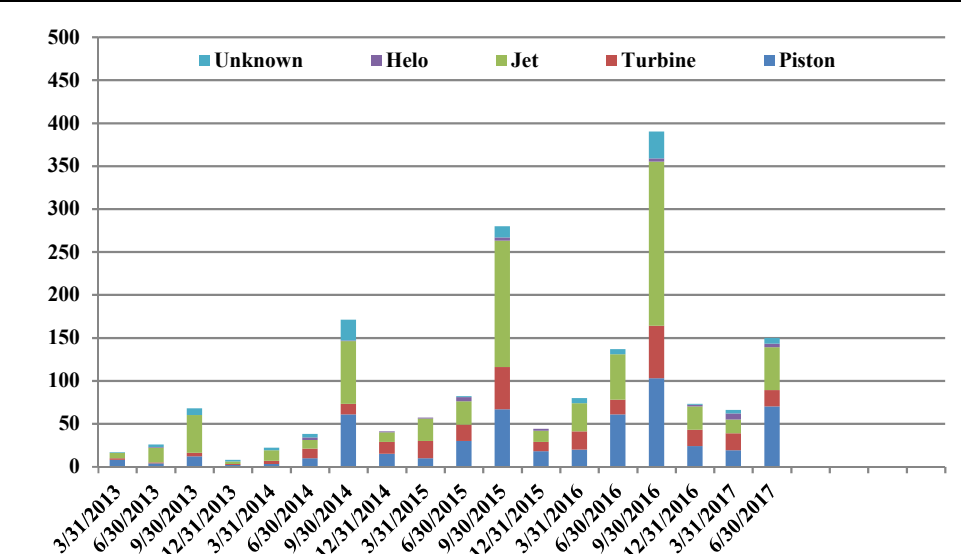
Comments | by Month by Year
January 1, 2013 - June 30, 2017



Comments | by Locale by Quarter
January 1, 2013 - June 30, 2017



Comments | by Type by Quarter
January 1, 2013 - June 30, 2017



Notes

April 2014 - Launched new TTAD Website with 'Report Noise' link.
 Operations graphs above use Total Powered Aircraft. Glider operations are not included.
 Jets > 50,000lbs subcategory was added in Q1 2015. Reporting and analysis prior to 2015 is not included.



Truckee Tahoe Airport District Operations and Community Comment Report as of 6/30/17



Operations Detail	OPERATIONS										Year over Year				Notes
	2016				2017				difference	%	7/1/15-6/30/16	7/1/16-6/30/17	difference	%	
	Apr	May	Jun	Q2	Apr	May	Jun	Q2			7/1/15-6/30/16	7/1/16-6/30/17			
Piston Single	770	1,062	1,557	3,389	861	1,188	1,861	3,910	521	15.37%	12,843	14,062	1,219	9.49%	
Piston Twin	73	64	93	230	69	62	130	261	31	13.48%	1,358	1,140	(218)	(16.05%)	
Turbo Prop	335	411	594	1,340	367	446	683	1,496	156	11.64%	6,123	6,587	464	7.58%	
Jet < 12,499 lbs	42	64	92	198	49	56	84	189	(9)	(4.55%)	934	865	(69)	(7.39%)	
Jet 12,500-19,999 lbs	53	75	167	295	67	76	162	305	10	3.39%	1,384	1,395	11	0.79%	
Jet 20,000-49,999 lbs	45	78	140	263	55	47	166	268	5	1.90%	1,104	1,219	115	10.42%	
Jet > 50,000 lbs	8	10	40	58	15	16	32	63	5	8.62%	259	214	(45)	(17.37%)	
Helicopter	88	73	91	252	79	94	99	272	20	7.94%	1,005	1,235	230	22.89%	
Total Powered Aircraft	1,414	1,837	2,774	6,025	1,562	1,985	3,217	6,764	739	12.27%	25,010	26,717	1,707	6.83%	
Gliders	-	276	940	1,216	-	176	712	888	(328)	(26.97%)	5,324	5,452	128	2.40%	
Total Operations	1,414	2,113	3,714	7,241	1,562	2,161	3,929	7,652	411	5.68%	30,334	32,169	1,835	6.05%	

Comment Location	COMMENTS										Year over Year				Notes
	2016				2017				difference	%	7/1/15-6/30/16	7/1/16-6/30/17	difference	%	
	Apr	May	Jun	Q2	Apr	May	Jun	Q2			7/1/15-6/30/16	7/1/16-6/30/17			
Alder	-	-	-	-	1	1	12	14	14	100.00%	15	33	18	120.00%	
Donner Lake	-	-	-	-	-	-	-	-	-	0.00%	-	-	-	0.00%	
Downtown	-	-	-	-	-	-	2	2	2	100.00%	1	3	2	200.00%	
Gateway	-	-	1	1	-	-	-	-	(1)	(100.00%)	1	-	(1)	(100.00%)	
Glenshire	3	3	13	19	-	2	13	15	(4)	(21.05%)	73	96	23	31.51%	
Martis Valley Estates	1	5	10	16	8	13	9	30	14	87.50%	35	96	61	174.29%	
Northstar/ Martis	1	13	8	22	-	2	-	2	(20)	(90.91%)	55	104	49	89.09%	
Olympic Heights	2	5	24	31	7	6	23	36	5	16.13%	141	135	(6)	(4.26%)	
Ponderosa	1	4	4	9	-	7	8	15	6	66.67%	21	36	15	71.43%	
Prosser	2	3	19	24	-	2	2	4	(20)	(83.33%)	143	59	(84)	(58.74%)	
Tahoe Donner	1	6	7	14	5	12	11	28	14	100.00%	54	109	55	101.85%	
Unknown/Other	-	-	1	1	-	2	2	4	3	300.00%	2	8	6	300.00%	
Total Comments	11	39	87	137	21	47	82	150	13	9.49%	541	679	138	25.51%	-
Comment Type															
Piston	2	23	36	61	13	21	36	70	9	14.75%	166	216	50	30.12%	
Turbine	1	6	10	17	2	9	8	19	2	11.76%	98	119	21	21.43%	
Jet	7	10	36	53	5	11	34	50	(3)	(5.66%)	246	284	38	15.45%	
Helo	-	-	-	-	1	2	1	4	4	100.00%	6	17	11	183.33%	
Unknown	1	-	5	6	-	4	3	7	1	16.67%	25	43	18	72.00%	
Total Comments	11	39	87	137	21	47	82	150	13	9.49%	541	679	138	25.51%	-
Operations per Comment				52.9				51.0	(1.8)	(3.48%)	56	47	(9)	(15.50%)	-