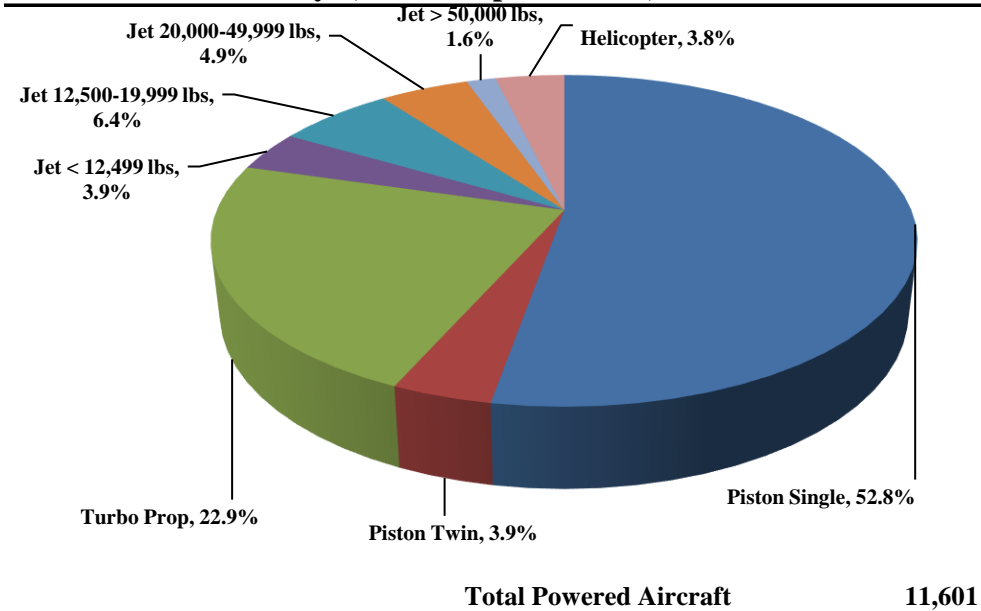




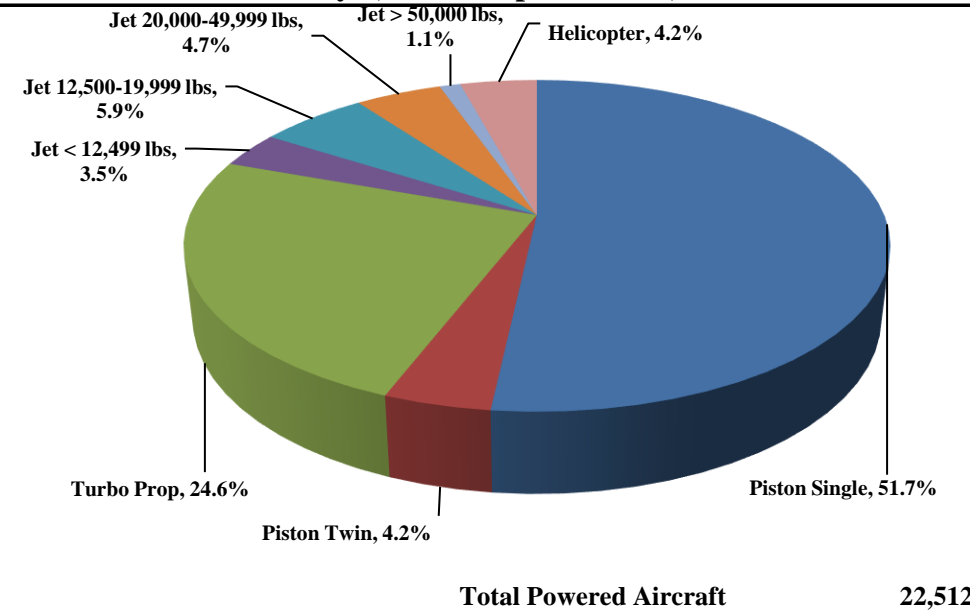
TRUCKEE TAHOE AIRPORT DISTRICT Operations and Community Comment Report as of 9/30/17



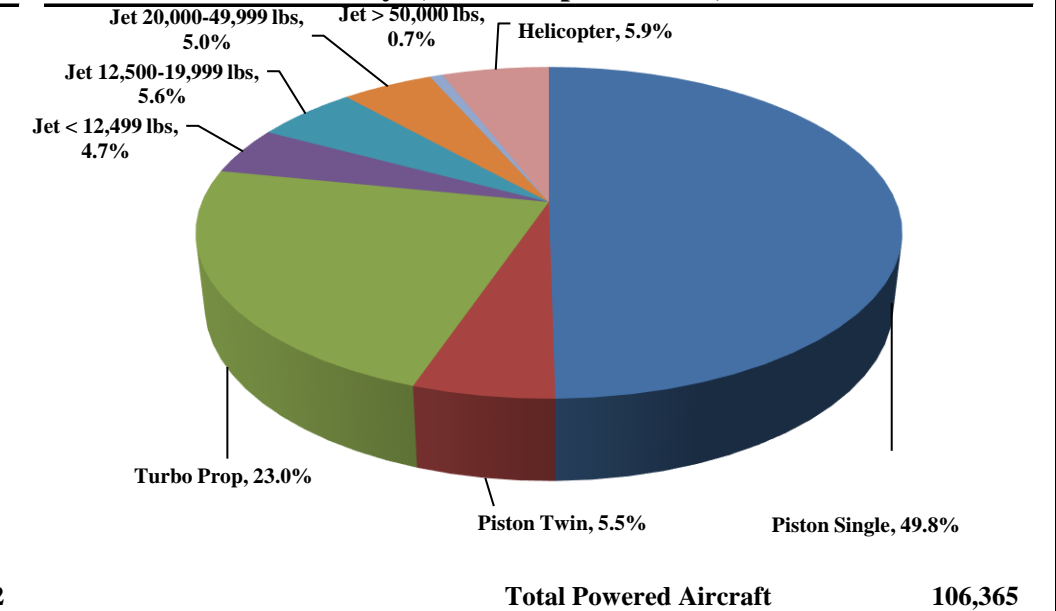
Current Quarter | Operations
July 1, 2017 - September 30, 2017



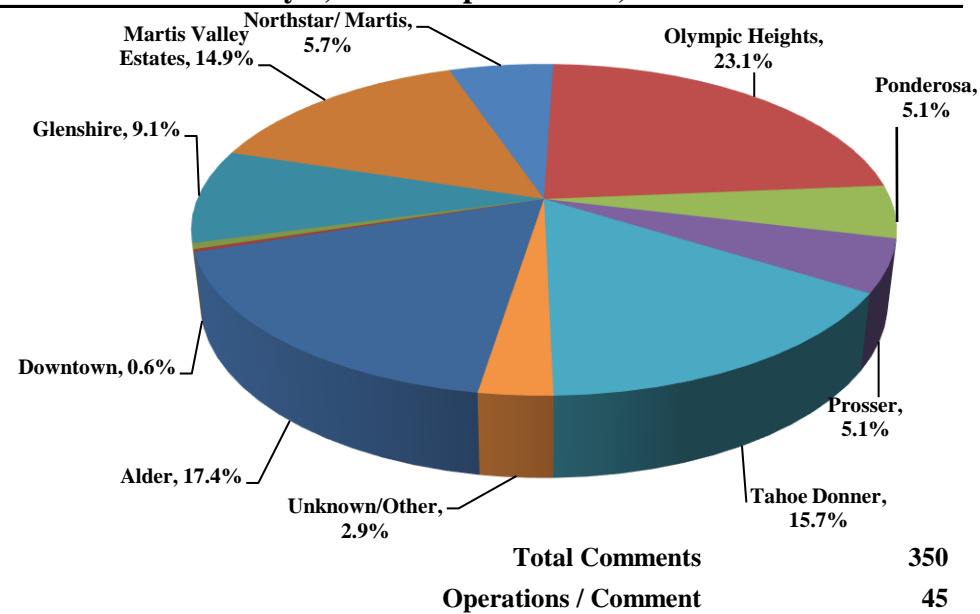
Year-to-Date | Operations
January 1, 2017 - September 30, 2017



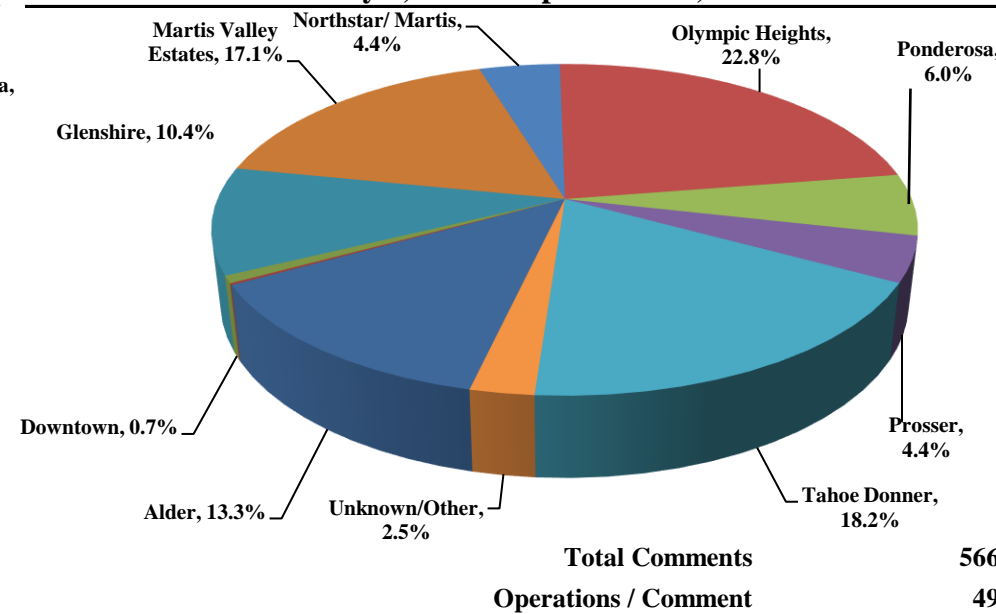
Historic | Operations
January 1, 2013 - September 30, 2017



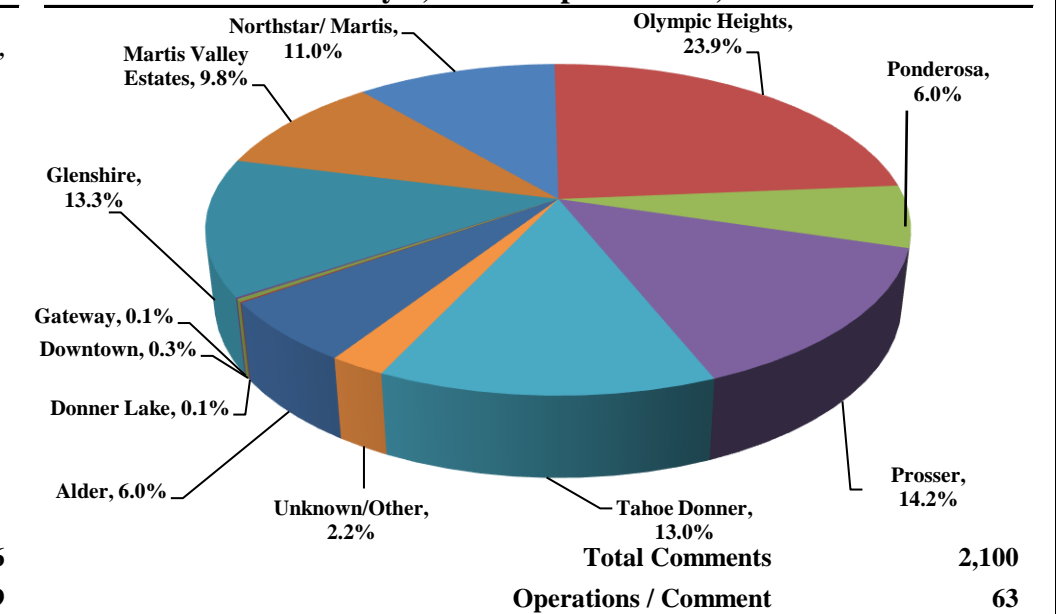
Current Quarter | Comments
July 1, 2017 - September 30, 2017



Year-to-Date | Comments
January 1, 2017 - September 30, 2017



Historic | Comments
January 1, 2013 - September 30, 2017



Notes

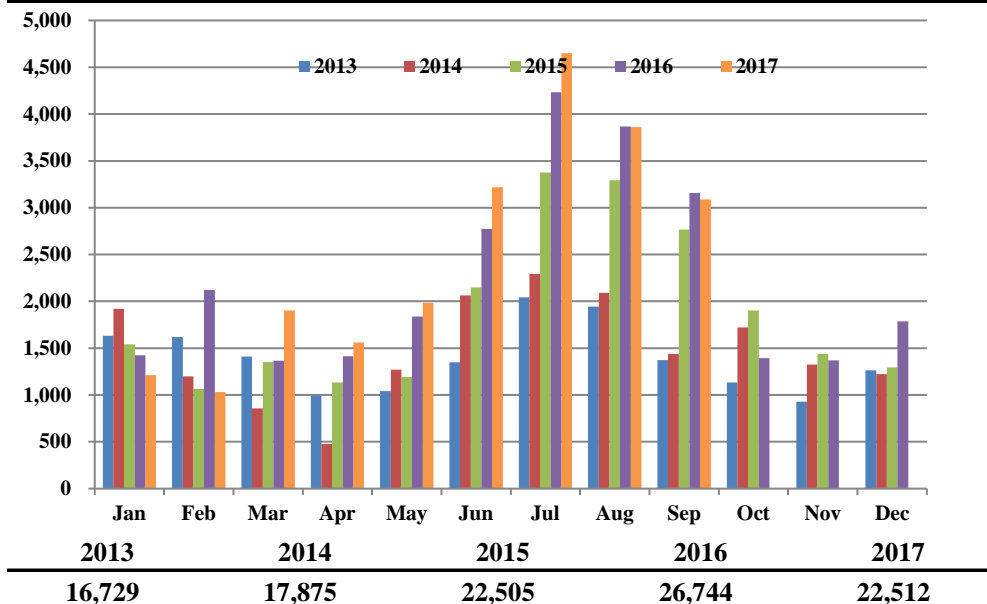
April 2014 - Launched new TTAD Website with 'Report Noise' link.
Operations graphs above use Total Powered Aircraft. Glider operations are not included.
Jets > 50,000lbs subcategory was added in Q1 2015. Reporting and analysis prior to 2015 is not included.



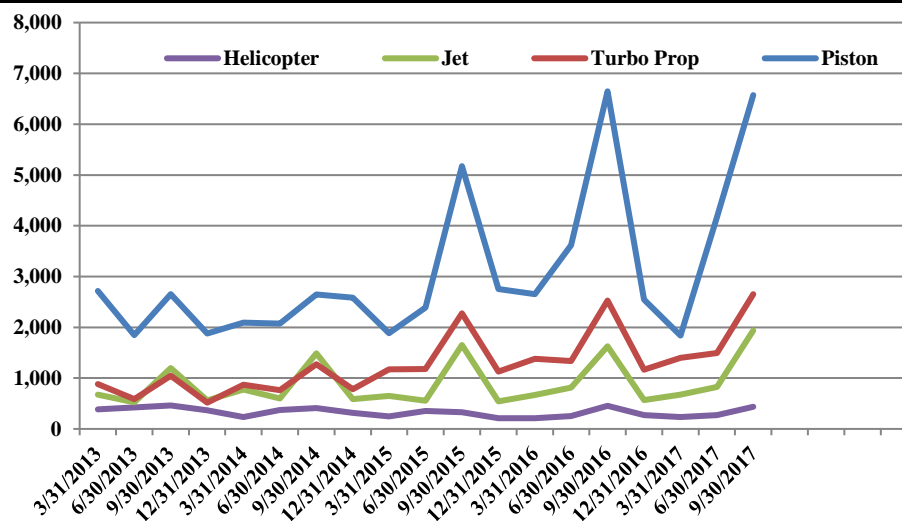
TRUCKEE TAHOE AIRPORT DISTRICT Operations and Community Comment Report as of 9/30/17



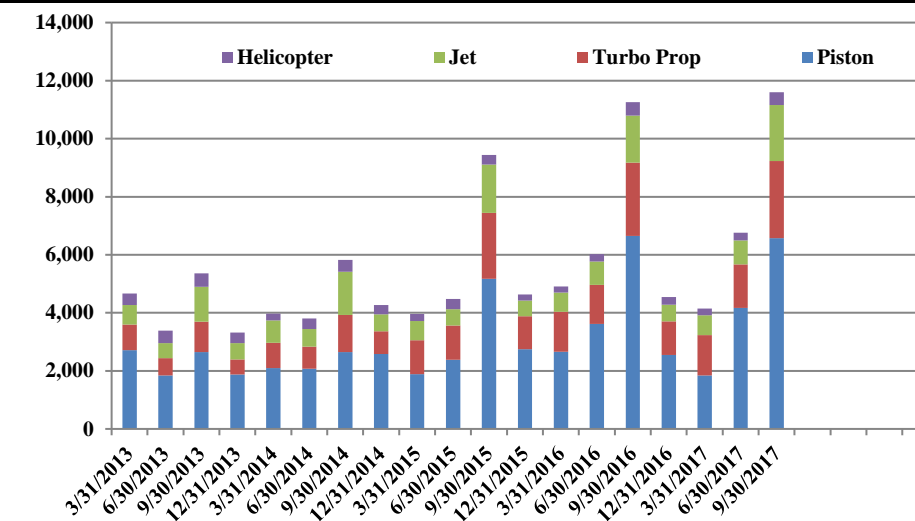
Operations | by Month by Year
January 1, 2013 - September 30, 2017



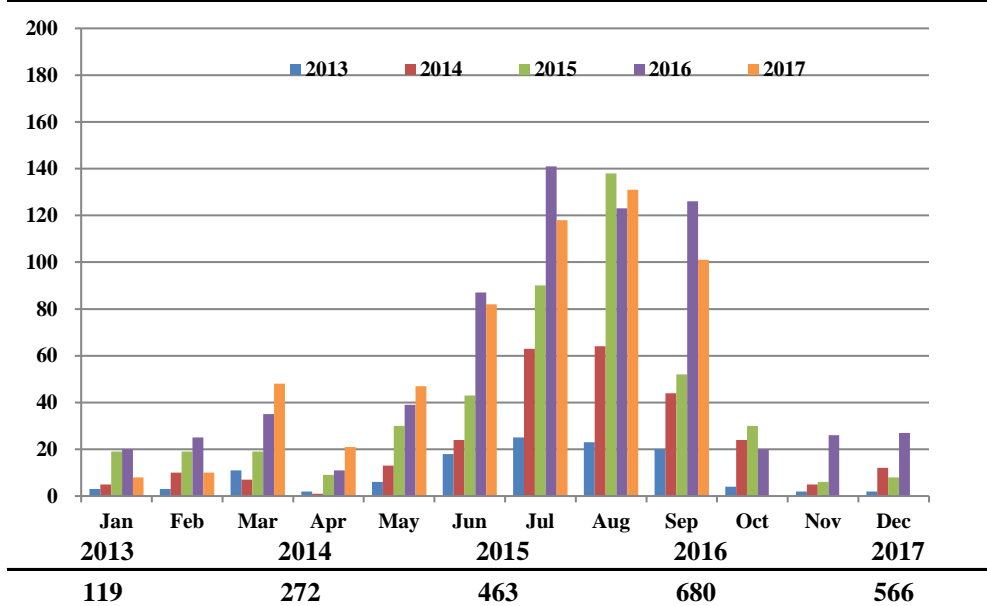
Operations | by Type by Quarter
January 1, 2013 - September 30, 2017



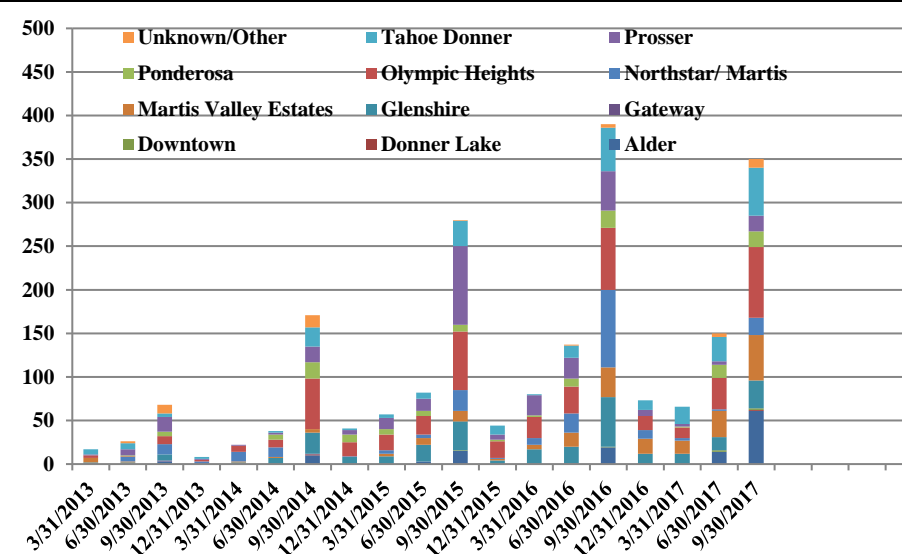
Operations | Mix by Type by Quarter
January 1, 2013 - September 30, 2017



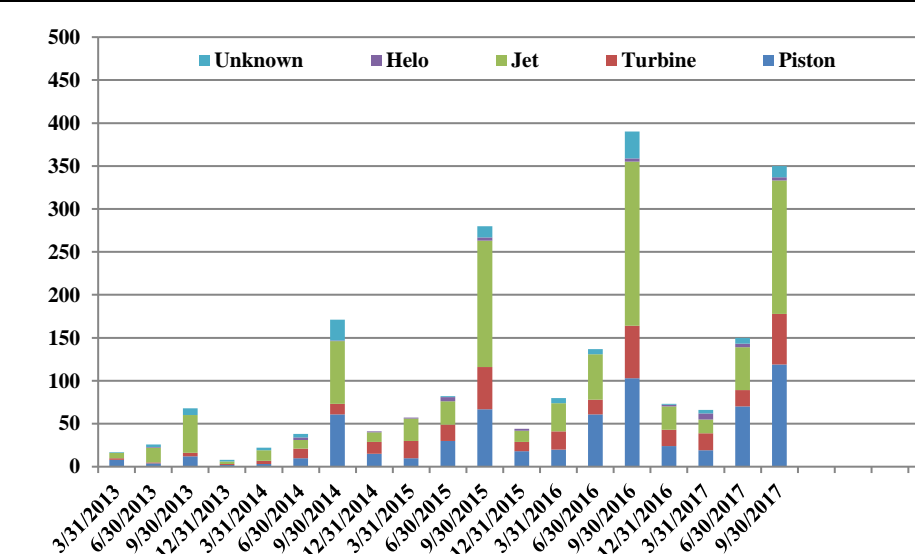
Comments | by Month by Year
January 1, 2013 - September 30, 2017



Comments | by Locale by Quarter
January 1, 2013 - September 30, 2017



Comments | by Type by Quarter
January 1, 2013 - September 30, 2017



Notes

April 2014 - Launched new TTAD Website with 'Report Noise' link.
 Operations graphs above use Total Powered Aircraft. Glider operations are not included.
 Jets > 50,000lbs subcategory was added in Q1 2015. Reporting and analysis prior to 2015 is not included.



Truckee Tahoe Airport District Operations and Community Comment Report as of 9/30/17



	OPERATIONS										Year over Year				Notes
	2016				2017				difference	%	10/1/15-9/30/17	10/1/16-9/30/17	difference	%	
	Jul	Aug	Sep	Q3	Jul	Aug	Sep	Q3			10/1/15-9/30/17	10/1/16-9/30/17			
Operations Detail															
Piston Single	2,238	2,217	1,734	6,189	2,491	2,007	1,624	6,122	(67)	(1.08%)	14,438	13,995	(443)	(3.07%)	
Piston Twin	190	138	130	458	180	161	109	450	(8)	(1.75%)	1,235	1,132	(103)	(8.34%)	
Turbo Prop	951	859	718	2,528	1,024	885	744	2,653	125	4.94%	6,377	6,712	335	5.25%	
Jet < 12,499 lbs	181	112	97	390	188	155	108	451	61	15.64%	909	926	17	1.87%	
Jet 12,500-19,999 lbs	247	192	157	596	285	253	200	738	142	23.83%	1,358	1,537	179	13.18%	
Jet 20,000-49,999 lbs	238	183	121	542	231	182	151	564	22	4.06%	1,143	1,241	98	8.57%	
Jet > 50,000 lbs	49	27	22	98	56	77	53	186	88	89.80%	242	302	60	24.79%	
Helicopter	140	139	177	456	196	141	100	437	(19)	(4.17%)	1,130	1,216	86	7.61%	
Total Powered Aircraft	4,234	3,867	3,156	11,257	4,651	3,861	3,089	11,601	344	3.06%	26,832	27,061	229	0.85%	
Gliders	2,080	1,612	872	4,564	1,812	1,448	998	4,258	(306)	(6.70%)	5,780	5,146	(634)	(10.97%)	
Total Operations	6,314	5,479	4,028	15,821	6,463	5,309	4,087	15,859	38	0.24%	32,612	32,207	(405)	(1.24%)	

	COMMENTS										Year over Year				Notes
	2016				2017				difference	%	10/1/15-9/30/17	10/1/16-9/30/17	difference	%	
	Jul	Aug	Sep	Q3	Jul	Aug	Sep	Q3			10/1/15-9/30/17	10/1/16-9/30/17			
Comment Location															
Alder	16	3	-	19	17	31	13	61	42	221.05%	19	75	56	294.74%	
Donner Lake	-	-	-	-	1	-	-	1	1	100.00%	-	1	1	100.00%	
Downtown	1	-	-	1	-	1	1	2	1	100.00%	1	4	3	300.00%	
Gateway	-	-	-	-	-	-	-	-	-	0.00%	1	-	(1)	(100.00%)	
Glenshire	17	14	26	57	9	6	17	32	(25)	(43.86%)	97	71	(26)	(26.80%)	
Martis Valley Estates	9	13	12	34	22	22	8	52	18	52.94%	57	114	57	100.00%	
Northstar/ Martis	36	25	28	89	6	12	2	20	(69)	(77.53%)	120	35	(85)	(70.83%)	
Olympic Heights	29	24	18	71	32	18	31	81	10	14.08%	145	145	-	0.00%	
Ponderosa	4	11	5	20	9	6	3	18	(2)	(10.00%)	33	34	1	3.03%	
Prosser	14	12	19	45	7	7	4	18	(27)	(60.00%)	98	32	(66)	(67.35%)	
Tahoe Donner	15	21	14	50	13	21	21	55	5	10.00%	75	114	39	52.00%	
Unknown/Other	-	-	4	4	2	7	1	10	6	150.00%	5	14	9	180.00%	
Total Comments	141	123	126	390	118	131	101	350	(40)	(10.26%)	651	639	(12)	(1.84%)	
Comment Type															
Piston	28	38	37	103	42	51	26	119	16	15.53%	202	232	30	14.85%	
Turbine	26	13	22	61	24	10	25	59	(2)	(3.28%)	110	117	7	6.36%	
Jet	73	64	54	191	44	66	45	155	(36)	(18.85%)	290	248	(42)	(14.48%)	
Helo	2	1	1	4	1	2	1	4	-	0.00%	6	17	11	183.33%	
Unknown	12	7	12	31	7	2	4	13	(18)	(58.06%)	43	25	(18)	(41.86%)	
Total Comments	141	123	126	390	118	131	101	350	(40)	(10.26%)	651	639	(12)	(1.84%)	
Operations per Comment															
				40.6				45.3	4.7	11.70%	50	50	0	0.61%	