



TRUCKEE TAHOE AIRPORT DISTRICT BOARD OF DIRECTOR STAFF REPORT

AGENDA TITLE: NTPUD Agency Partnership Opportunity, Multi-Use
Trailhead Access Improvements North Tahoe Regional Park

MEETING DATE: January 24, 2018

PREPARED BY: Marc R. Lamb, Aviation & Community Services Manager

PRESENTATION BY: Duane Whitelaw, General Manager NTPUD

RECOMMENDED ACTION: North Tahoe Public Utility (NTPUD) staff is requesting a Board audience to see if there is interest in an “Agency Partnership” opportunity with the NTPUD in partially funding proposed major Multi-Use Trailhead Access Improvements at the North Tahoe Regional Park and surrounding region.

DISCUSSION: The proposed projects would positively impact the quality of life of Truckee Tahoe Airport District (TTAD) constituents and visitors by improving regional recreational amenities and environmental quality. The attached list of proposed projects includes: general maintenance and upgrades of existing park and trail facilities and amenities, expansion of trail systems to connect with other regional trail systems (North Shore and Martis Valley), improvements in signage, environmental erosion and stream restoration projects, completion of unfinished access trails, etc. TTAD staff would like to introduce NTPUD General Manager Duane Whitelaw who will be providing the TTAD Board with a presentation on the proposed projects and will be available to answer questions and entertain a discussion on this partnering opportunity.

WHAT’S NEXT: If the TTAD Board determines there is further interest in this Agency Partnership opportunity, NTPUD staff will move forward with a formal “Agency Partnership” application packet, including providing more detailed project descriptions. TTAD staff will then present the completed Agency Partnership application packet at a future TTAD Board meeting for consideration.

FISCAL IMPACT: To be determined by the scope and timeline of any potential future TTAD Board approved Agency Partnership funding.

PUBLIC COMMUNICATIONS: TTAD staff would work closely with NTPUD staff in combined marketing efforts promoting the Agency Partnership to District constituents. TTAD staff would also be involved with trail and park signage placement recognizing TTAD support of specific projects.

SAMPLE MOTION(S): None at this time.

ATTACHMENTS:

- North Tahoe Regional Park - Master Plan of Projects Recommended for Resident and Visitor Trailhead Improvements and New and Updated Multi-use Trails Project Descriptions, Updated January 16, 2018
- Multi-use Trailhead – Exhibit-2
- TTAD Presentation January 2018

**North Tahoe Regional Park
Master Plan of Projects Recommended for Resident and Visitor Serving Trailhead Improvements and New and
Updated Multi-use Trails Project Descriptions
Updated January 16, 2018**

As the region continues to build a variety of multi-use trails in the area, the North Tahoe Public Utility District is putting together a master plan of projects in the North Tahoe Regional Park to improve the Park to be a designated trailhead, and provide multi-use trails to various facilities.

The project numbers do not necessarily indicate the order, they can be done in any order as funding becomes available.

Completed Project: Restroom Replacement

Scope: Purchase and installation of new bathrooms including site work, utilities, etc.

Completed Spring 2017

Total Cost: \$613,713

Agency	Portion of Project to Fund	Anticipated contribution and contribution to date.
Placer County Park Mitigation Funding	Design, Permitting, Site Work, Construction, Inspections	\$557,713
NTPUD	Project and Grant Management	\$56,000

In Process: North Tahoe Regional Park Signage Project and Par Course Replacement

Scope: Wayfinding and interpretive signage leading to and within the North Tahoe Regional Park and replacement of par course with adult exercise equipment. Includes replacement of 10 directional signs, 10 interpretive signs and 15 park course stations; and repair and upgrade sections of trail.

Date of Construction: 2018 (Contract with Placer County requires completion by 8/1/18)

Total Cost: \$148,500

Agency	Portion of Project to Fund	Anticipated contribution and contribution to date.
Placer County Transient Occupancy Tax Funding	Design, Permitting, Site Work, Construction, Inspections	\$135,000
NTPUD	Project and Grant Management	\$13,500

Project 1: Multi-Use Trailhead Improvements, Parking/Staging Area and Access Road Resurfacing

Scope: Repaving of trailhead parking area and the access road from the parking area to the start of the Pine Drop Bike Trail, installation of BMP's, reduction of paved coverage, addition of trail head amenities including bike repair station, bike racks, bike lockers, 2 benches and signage. Installation of conduit and pull boxes for future parking lot lighting. Tentative locations of light standards: near the bathrooms, walkway/entrance toward Ramada, near the Winter Concession Building, at the proposed entrance for the Accessory Parking lot.

Estimated Date of Construction: 2018 (Permit in hand)

Cost Estimate: \$550,000

Funders:

Agency	Portion of Project to Fund	Anticipated contribution and contribution to date.
NTPUD	Design, Engineering, Permitting, Fees, Bidding, Construction, Project and Grant Management, Basketball hoop relocation.	\$50,000 Plus Ongoing O&M
Truckee Tahoe Airport District (In whole or phases)	Upper Parking Lot Reconstruction Trailhead Amenities Access Road Resurfacing Site Utilities (Conduit for future parking lot lighting at trailhead) Construction BMP's Total	\$360,000 \$40,000 \$65,000 \$35,000 \$35,000 \$500,000

Regional Impact:

EIP Project: Recreation amenity and coverage reduction

Project 2: Multi-Use Trail to Dog Park and Tennis Courts

Scope: Construction of a multi-use trail/ADA path to the Dog Park and Tennis Courts from the lower parking lot.

Estimated Date of Construction: 2018 – Permit in hand

Cost Estimate: \$280,500

Funders:

Agency	Portion of Project to Fund	Anticipated contribution and contribution to date.
NTPUD	Design, Engineering, Permitting, Permitting Fees, Bidding, Construction Management	\$25,500
Placer County	Multi-Use/ADA Path	\$255,000

Project 3A or B: Repave Pine Drop Trail OR Update Pine Drop Trail to Meet Regional Trail Plan Specifications

Repaving Scope: The Pine Drop Bike Trail is in need of grinding, repaving, and removal of trees directly adjacent to the trail that are causing damage. This project would also include installation of signage that meets regional agreed upon bike trail rules.

Trail Update Scope: If a variety of funding sources can be found the District would prefer to move forward with updating the Pine Drop Trail in order to provide access to the Park from the significant population on the east side of Highway 267 and on the west side in Kingswood Estates, the Kingswood Condos, etc. This would allow the District to do some stream restoration at two crossings, reduce grades, widen and stripe the trail for safety.

Estimated Date of Construction: TBD

Cost Estimate: Repave - \$325,000, Update Trail to Regional Trail Network specifications – TBD (\$2 million?)

Project 4: Multi-use Trail to Field #5

Scope: Ballfield #5 was constructed with the help of volunteers however the final access multi-use/ADA path from the parking lot to the field was never completed. This funding will complete this project and provide a paved multi-use path for players and spectators to access the ballfields.

Estimated Date of Construction: TBD (6-12 months to permit)

Cost Estimate: \$99,000

Agency	Portion of Project to Fund	Anticipated contribution and contribution to date.
NTPUD	Design, Engineering, Permitting, Permitting Fees, Bidding, Construction Management	\$9,000
Placer County	Multi-Use/ADA Path	\$90,000

Project 5: Repave Existing Access Road from Park Entrance to Pine Drop Trail

Scope: This final phase would complete the multi-use trailhead access improvements. It would repave the remainder of the access road from the Park Entrance to the Pine Drop Trail that provides the paved connection between the County's bike trail on the old Batch Plant Property to the Pine Drop Bike Trail.

Estimated Date of Construction: TBD (Need to finalize detailed scope to determine permitting requirements.)

Cost Estimate: \$445,500

Agency	Portion of Project to Fund	Anticipated contribution and contribution to date.
NTPUD	Design, Engineering, Permitting, Permitting Fees, Bidding, Construction Management	\$40,500
Placer County	Repave Existing Access Road from Park Entrance to Pine Drop Trail	\$405,000

Future Projects

Project 6: Connection to Kings Beach

Scope: Connecting the Regional Park to Kings Beach has been identified as a priority by residents in surveys and by the Recreation and Parks Commission. This project will need to be coordinated with the Placer County Trails Master Plan and Tahoe Regional Planning Agency Lake Tahoe Regional Bicycle and Pedestrian Master Plan.

Estimated Date of Construction: None

Cost Estimate: None

Project 7: Accessory Parking Lot

Scope: As the amenities at the North Tahoe Regional Park continue to expand, it is likely an accessory parking lot near the Pine Drop Bike Trail will be necessary.

Estimated Date of Construction: None

Cost Estimate: None

Project 8: Connect North Tahoe Regional Park to Tahoe Vista Recreation Area Bike Trail

Scope: Location to be determined.

Estimated Date of Construction: None

Cost Estimate: None

Project 9: Connect North Tahoe Regional Park to North Tahoe Trail/Northstar at Tahoe Trail

Scope: To be determined in cooperation with Regional Trail planning efforts.

Estimated Date of Construction: None

Cost Estimate: None

Project 10: Concession Building/Park Building

Scope: To be determined.

Estimated Date of Construction: None

Cost Estimate: None

NORTH TAHOE REGIONAL PARK BOUNDARY

PROJECT 4:
Multi-use Trail to Field #5

PROJECT 9 (FUTURE) (OFFSITE):
Connect North Tahoe Regional Park to North Tahoe Trail / Northstar at Tahoe Trail

PROJECT 6 (OFFSITE):
Connection to Kings Beach

0.95 MILES FROM
PARK BOUNDARY
TO 267

FIELD 5

SOCCER FIELD

PROJECT 10 (FUTURE):
Concession Building & Park Amenity

"PINE DROP" TRAIL TO HWY 267

PROJECT 1:
Multi-use Trailhead Improvements,
Parking/Staging Area and Access
Road Resurfacing

PROJECT 7 (FUTURE):
Accessory Parking Lot

PROJECT 3A -OR- 3B:

3A: Repave "Pine Drop" Trail
-OR-

3B: Update "Pine Drop" Trail to Meet
Regional Trail Plan Specification

PROJECT 5:
Repave Existing Access Road from
Park Entrance to "Pine Drop" Trail

PROJECT 2:
Multi-use Trail to Dog Park and Tennis
Courts from Lower Parking Area

DOG PARK

PROJECT 8 (FUTURE) (OFFSITE):
Connect North Tahoe Regional
Park to Tahoe Vista
Recreation Area Bike Trail

NORTH TAHOE REGIONAL PARK BOUNDARY



0 200
SCALE: 1"=200'

- NORTH TAHOE REGIONAL PARK -

MULTI-USE TRAIL IMPROVEMENT PROJECTS





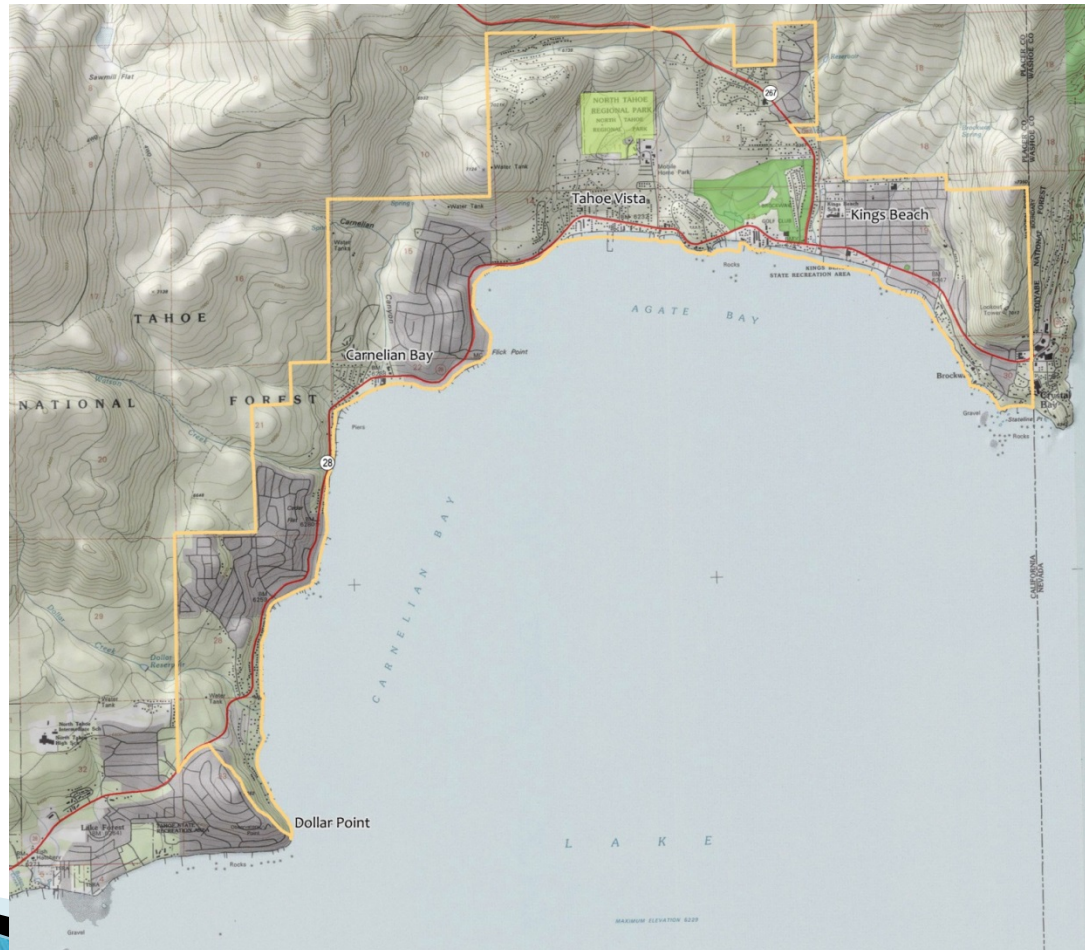
NORTH TAHOE PUBLIC UTILITY DISTRICT

Multi-Use Trailhead Access Improvements at the
North Tahoe Regional Park

A presentation for the Truckee Tahoe Airport District
January 24, 2018

North Tahoe Public Utility District

6.5 square miles with 8.3 miles of shoreline from the California state line in Crystal Bay to Dollar Hill



District Overview

3872 Water Connections

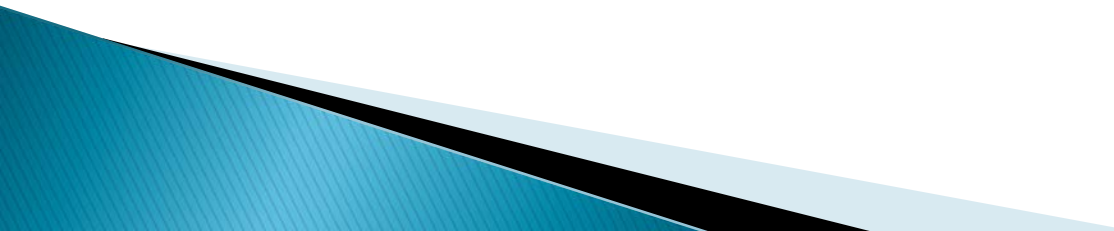
- Agate Bay Water Company and Fulton Water Company also provide service within our District boundaries.

5523 Sewer Customers

Parks and Recreation Facilities

- North Tahoe Regional Park
- Tahoe Vista Recreation Area and Boat Launch
- North Tahoe Event Center

2017–2018 Budget

- Operating Expense Budget of \$11.8 million
 - Capital Budget of \$4.2 million
 - 44 Employees (full-time equivalent)
- 

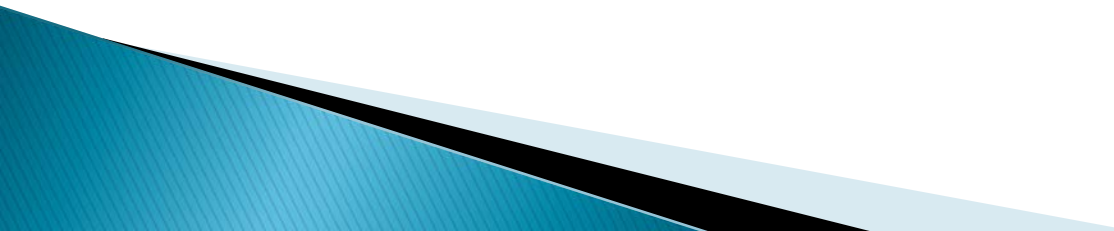
Key Park Facilities

- ▶ North Tahoe Regional Park – Approximately 114 acres: hiking hiking/biking trails, disc golf course, ballfields, all weather soccer field, tennis/pickleball courts, disc golf course, playground, Scout Camp, picnic areas and ropes course concession
- ▶ Tahoe Vista Recreation Area – Beach and launching facility.
- ▶ North Tahoe Event Center – Lakefront conference, meeting, wedding, party, recreation and community gathering facility.



2016 NTPUD Recreation Survey

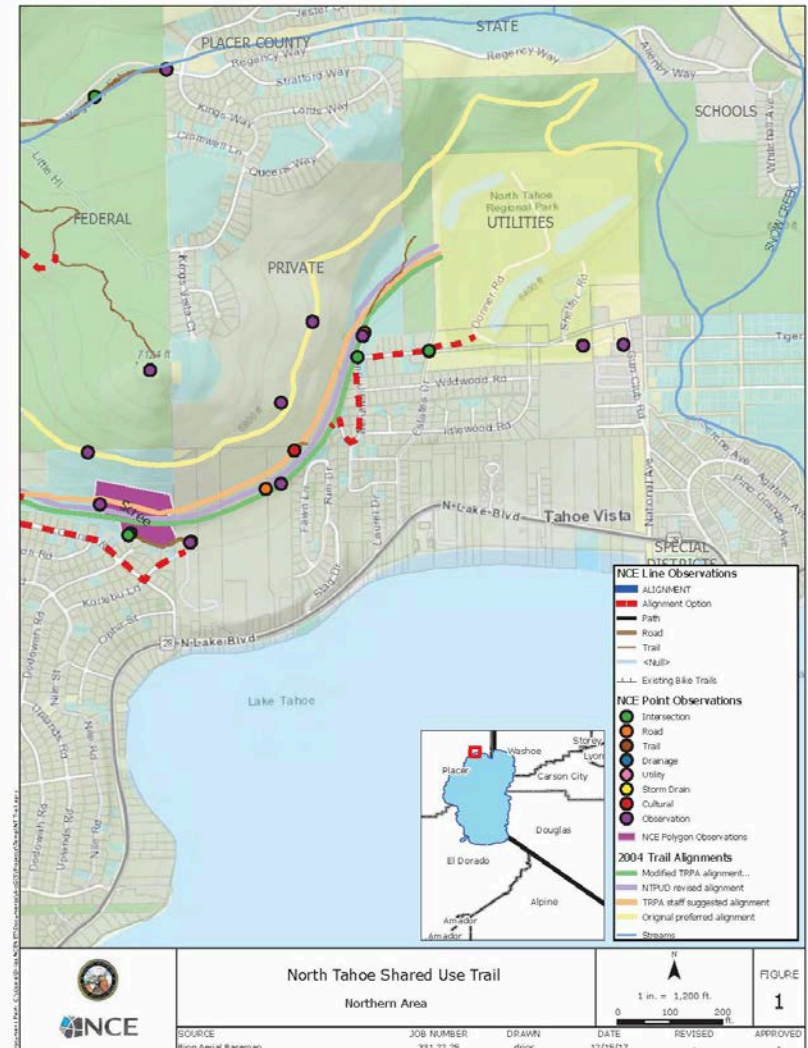
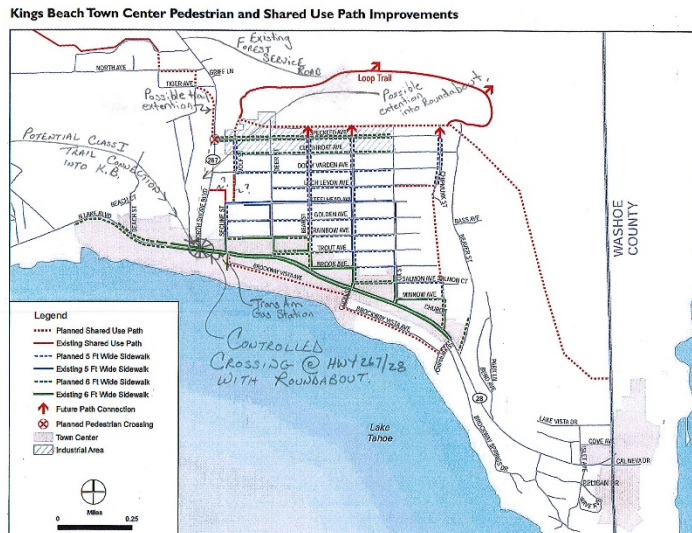
6 of the Top 7 Priority Projects from Respondents

- Increased level of maintenance for Parks, Trails and other facilities
 - Improve Hiking and Biking Facilities such as Pine Drop Trail and NTRP Trail System or those in the NTRP
 - Connection of Bike Trails to NTRP and greater North Tahoe region bike trail network
 - Improve and add hiking and biking facilities such as Pine Drop Bike Trail and NTRP Trail System
- 

Regional Trail System Map

Placer County will begin environmental studies and permitting for the North Tahoe Shared Use Trail once the 2.2 mile Dollar Creek Shared Use Trail is completed.

NOTE: Alignments shown for both trails are conceptual.



Restroom Replacement



2016 Phase 1 of Park Improvements:

Placer County Park Mitigation Contribution:
\$557,713

NTPUD Contribution: \$56,000



Interpretive & Wayfinding Signage and Par Course Replacement

2018 Funded Park Improvements:

Placer County Transient Occupancy Tax: \$135,000

NTPUD Contribution: \$13,500



Trailhead Staging Area Improvements

**2018 Proposed
Project**



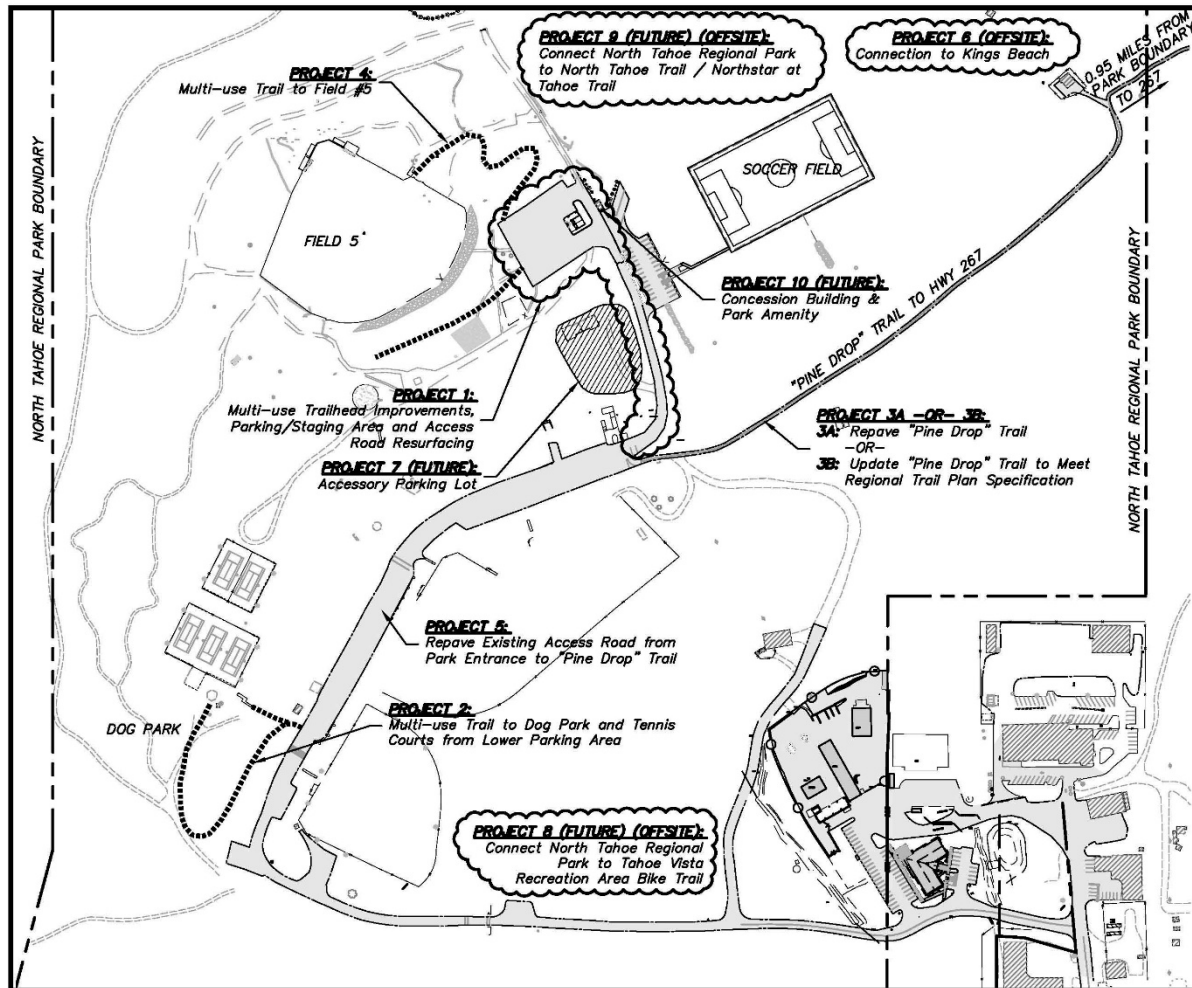
Multi-Use/ADA Trail to Dog Park and Tennis Courts



**2018 Proposed
Project**



North Tahoe Regional Park Regional Trailhead Improvements



Questions and Answers



Sign up on the District's website
www.ntpud.org to receive press
releases and other information from the
North Tahoe Public Utility District.

**Parks
Make
Life
Better!**