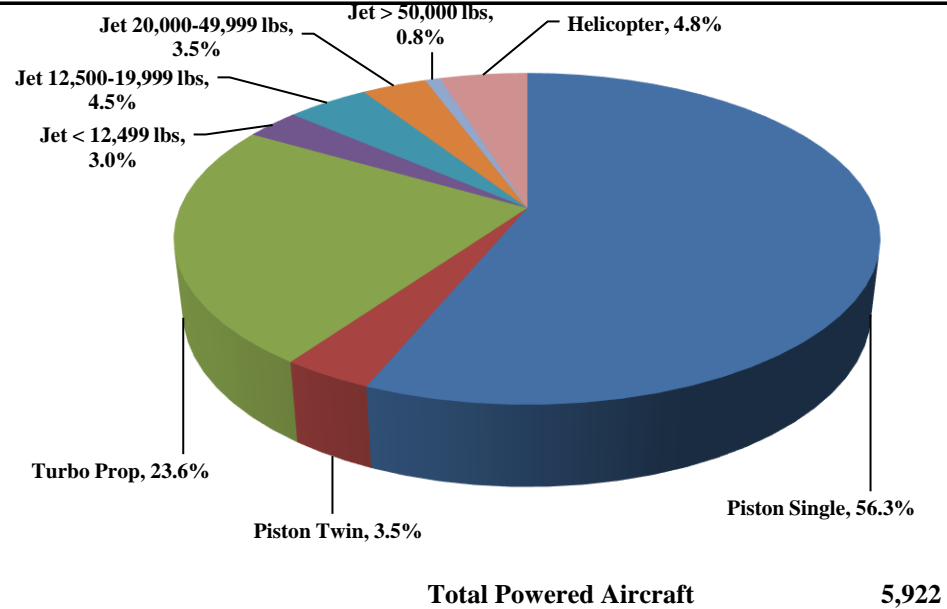




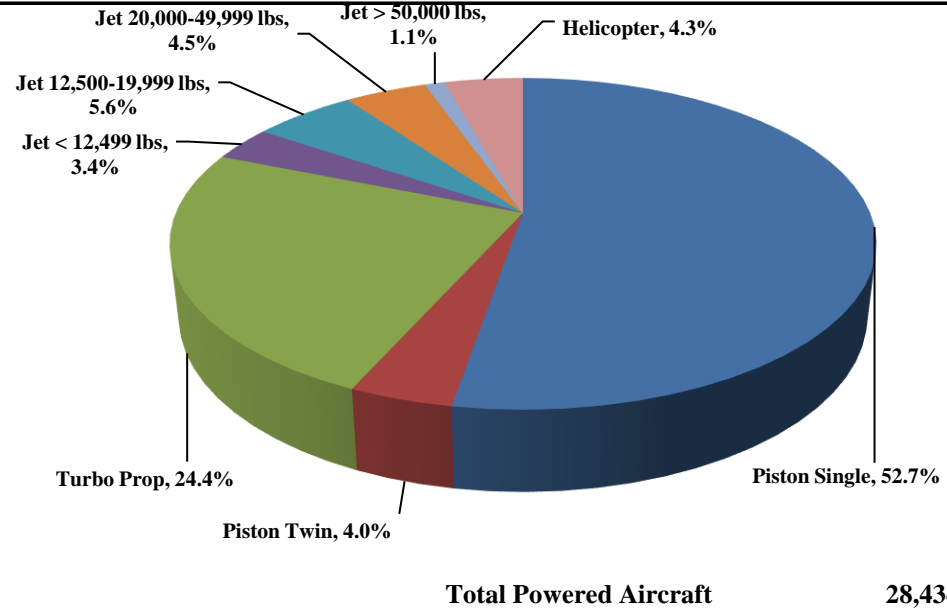
TRUCKEE TAHOE AIRPORT DISTRICT Operations and Community Comment Report as of 12/31/17



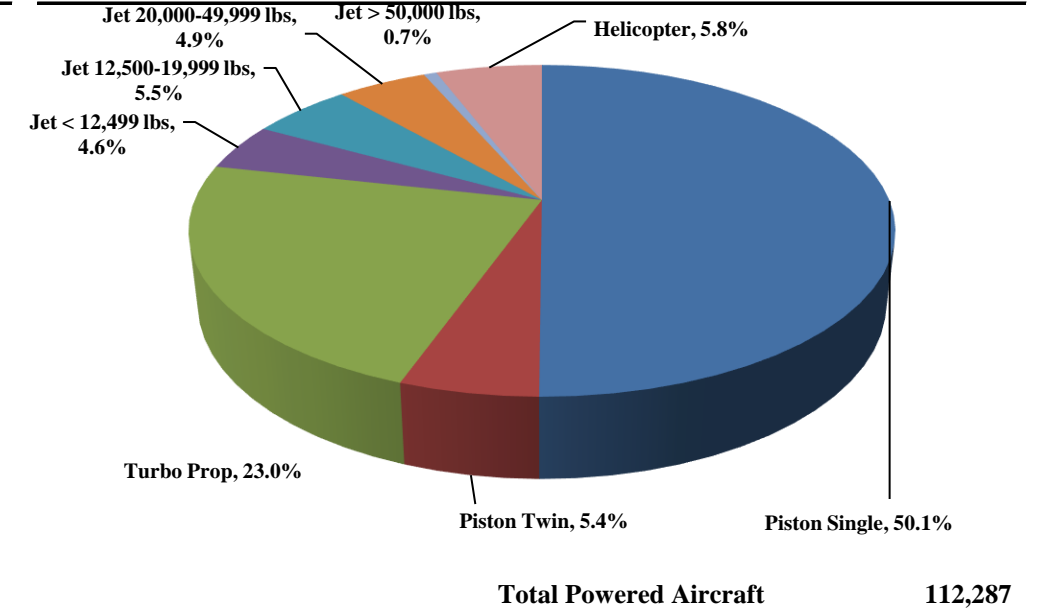
Current Quarter | Operations
October 1, 2017 - December 31, 2017



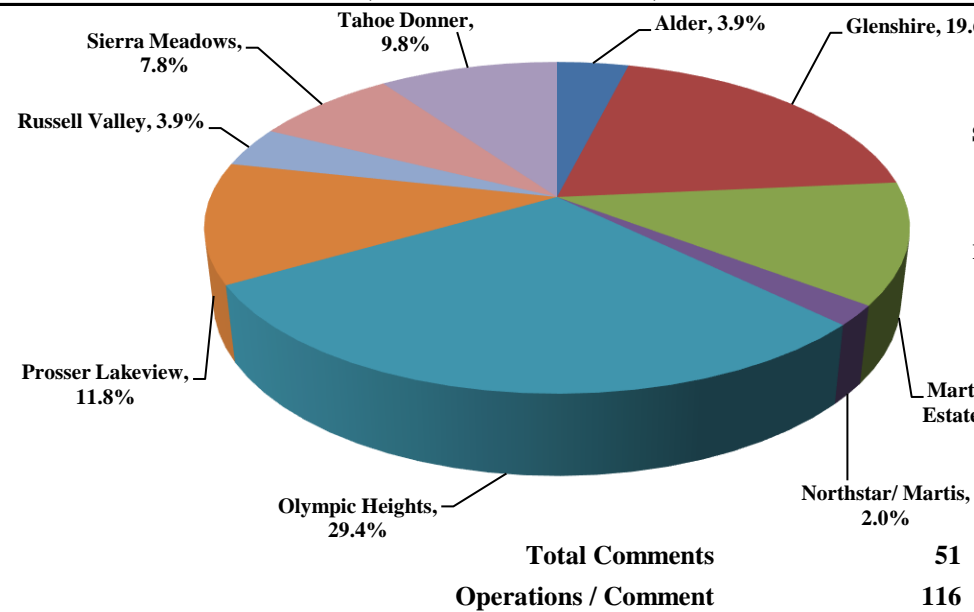
Year-to-Date | Operations
January 1, 2017 - December 31, 2017



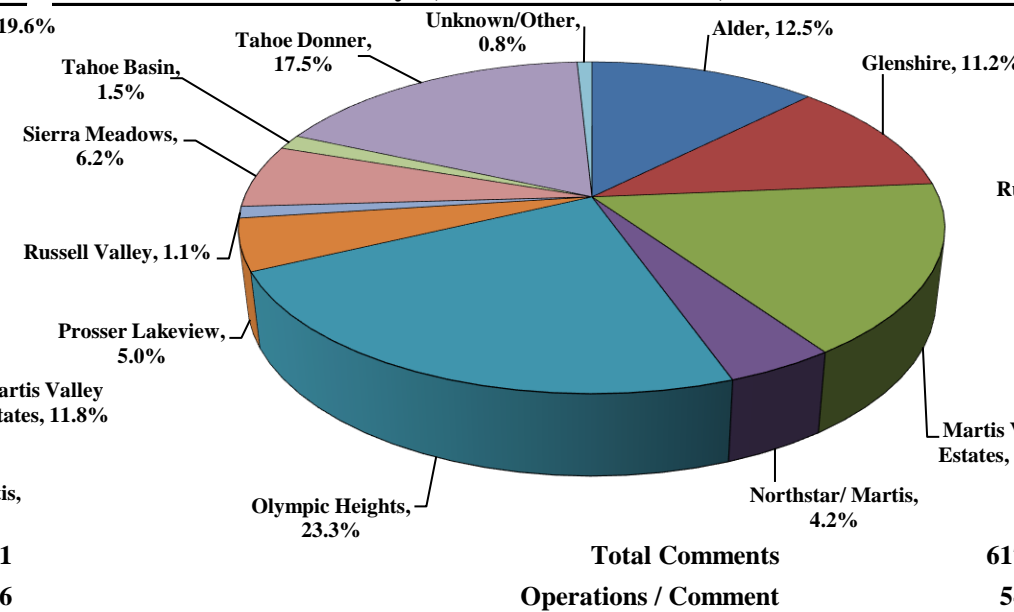
Historic | Operations
January 1, 2013 - December 31, 2017



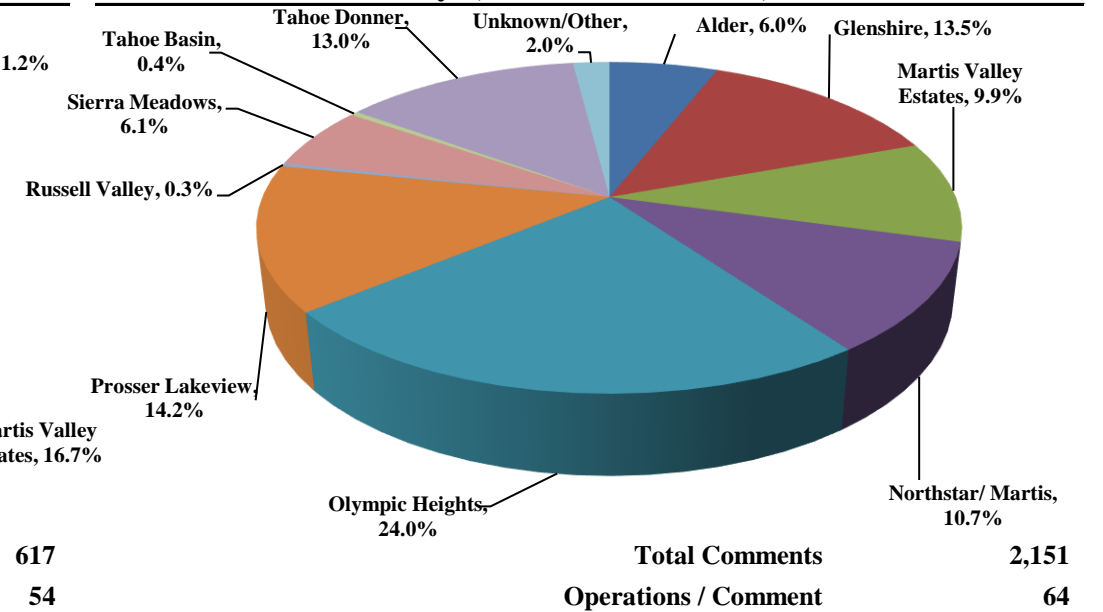
Current Quarter | Comments
October 1, 2017 - December 31, 2017



Year-to-Date | Comments
January 1, 2017 - December 31, 2017



Historic | Comments
January 1, 2013 - December 31, 2017



Notes

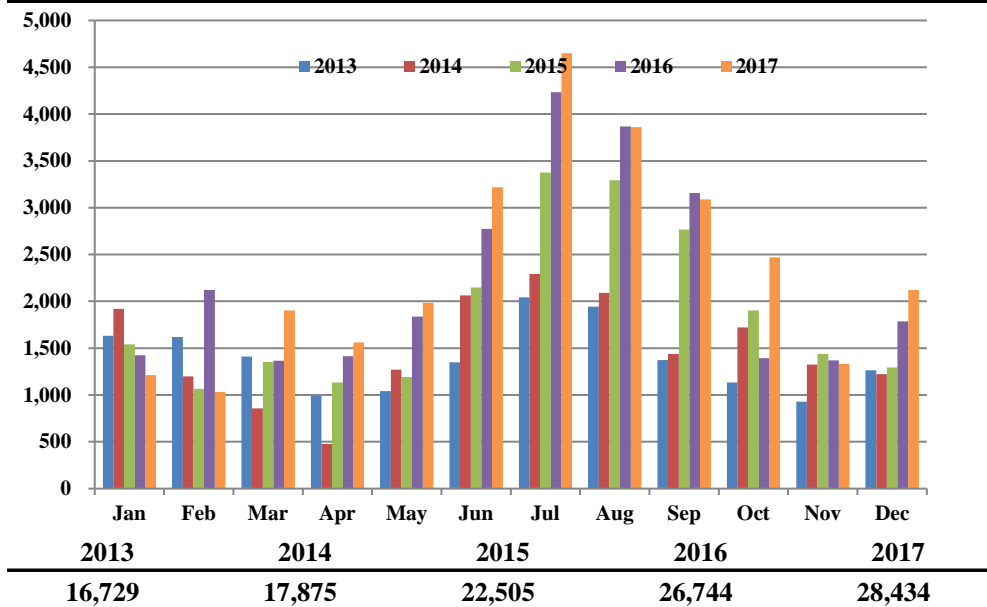
Operations graphs above use Total Powered Aircraft. Glider operations are not included.
 2017 - Residential Zones changed to match minimum of 1% of total comments
 2015 - Jet > 50,000 lbs category added in Q1
 2014 - TTAD launched 'Report Noise' link in website



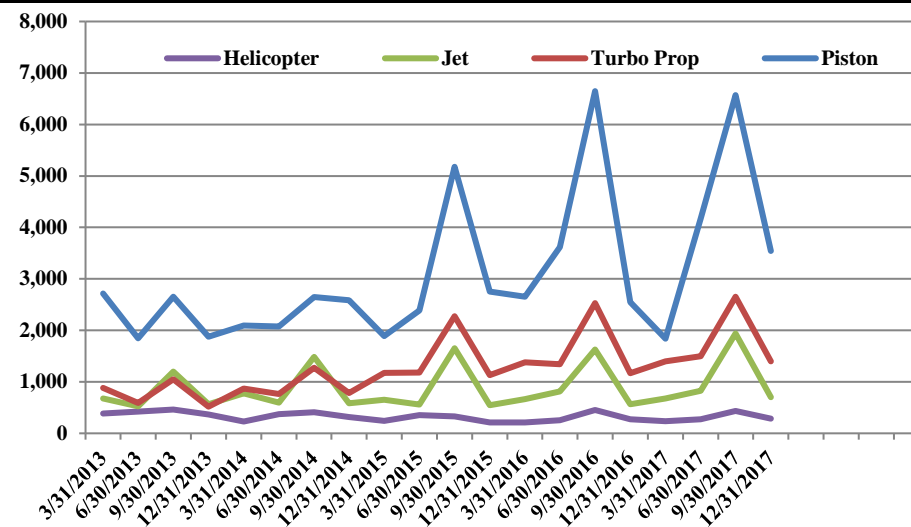
TRUCKEE TAHOE AIRPORT DISTRICT Operations and Community Comment Report as of 12/31/17



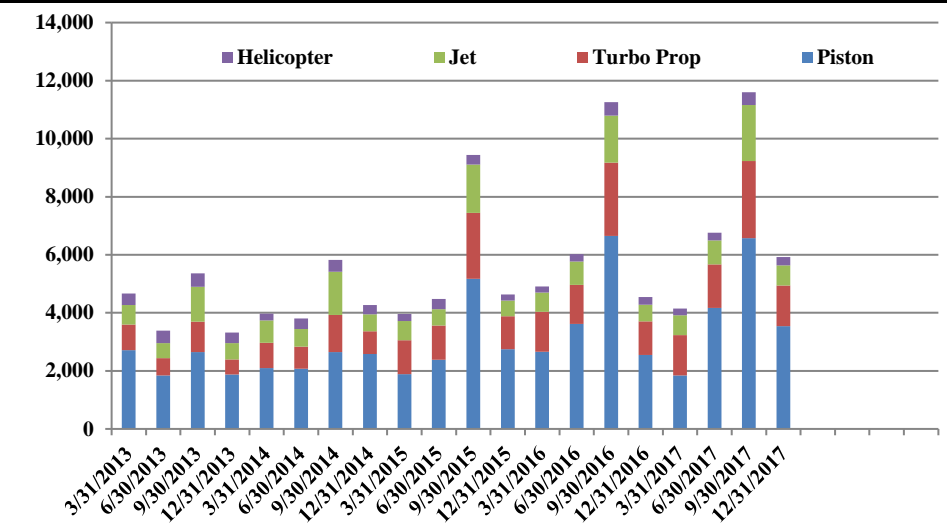
Operations | by Month by Year
January 1, 2013 - December 31, 2017



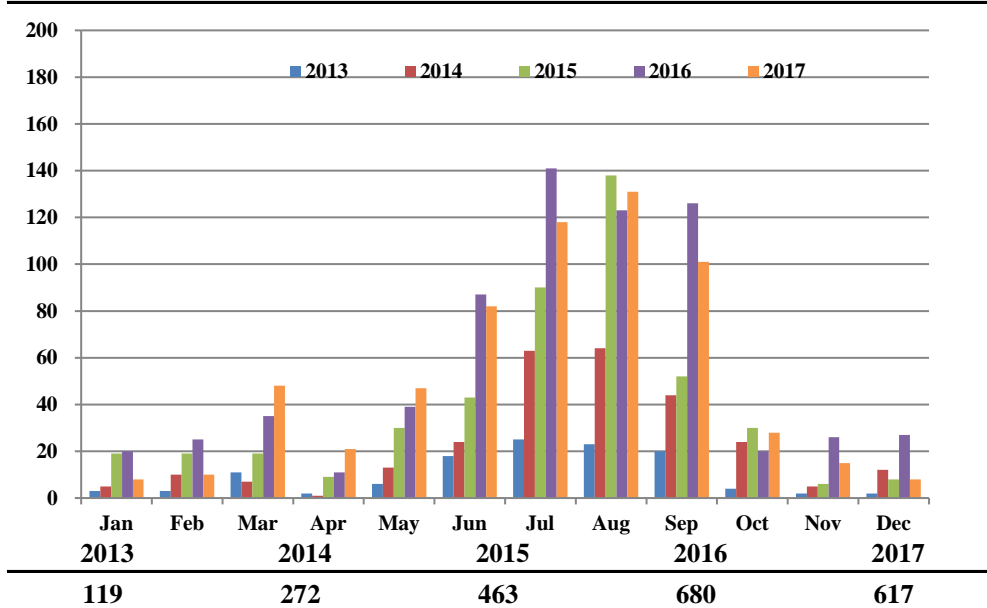
Operations | by Type by Quarter
January 1, 2013 - December 31, 2017



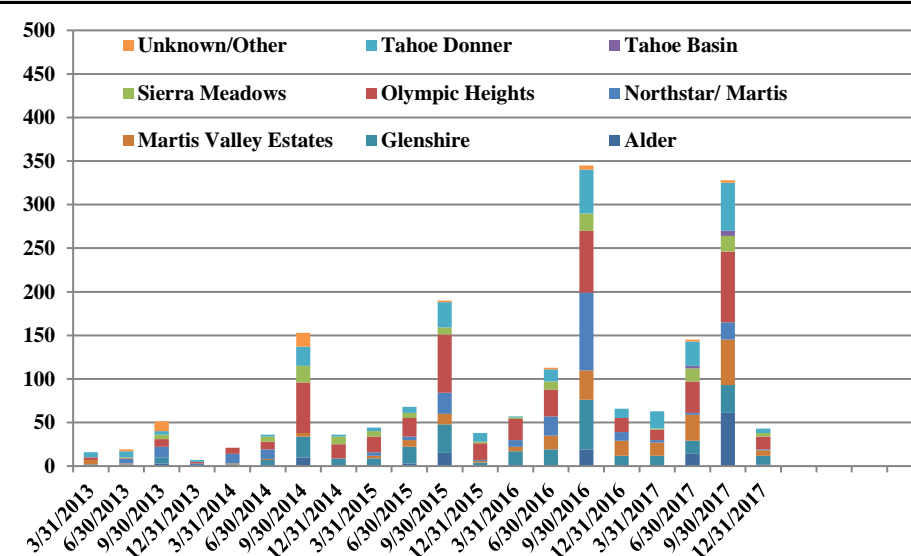
Operations | Mix by Type by Quarter
January 1, 2013 - December 31, 2017



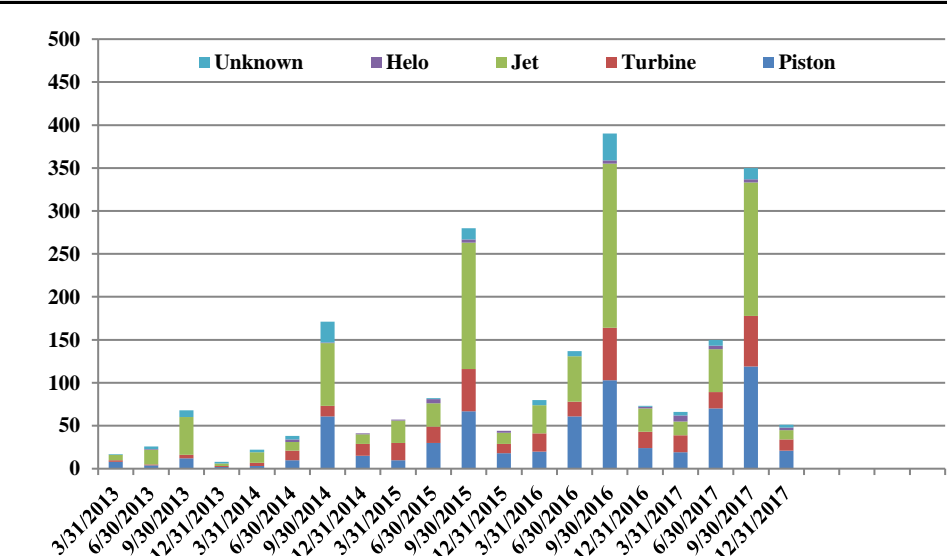
Comments | by Month by Year
January 1, 2013 - December 31, 2017



Comments | by Locale by Quarter
January 1, 2013 - December 31, 2017



Comments | by Type by Quarter
January 1, 2013 - December 31, 2017



Notes

Operations graphs above use Total Powered Aircraft. Glider operations are not included.
 2017 - Residential Zones changed to match minimum of 1% of total comments
 2015 - Jet > 50,000 lbs category added in Q1
 2014 - TTAD launched 'Report Noise' link in website



Truckee Tahoe Airport District Operations and Community Comment Report as of 12/31/17



	OPERATIONS										Year over Year				Notes	
	2016				2017				difference	%	1/1/16-12/31/16	1/1/17-12/31/17	difference	%		
	Oct	Nov	Dec	Q4	Oct	Nov	Dec	Q4			1/1/16-12/31/16	1/1/17-12/31/17				
Operations Detail																
Piston Single	728	744	877	2,349	1,532	772	1,028	3,332	983	41.85%	14,262	14,978	716	5.02%		
Piston Twin	68	60	69	197	92	53	65	210	13	6.60%	1,205	1,145	(60)	(4.98%)		
Turbo Prop	372	359	434	1,165	465	323	607	1,395	230	19.74%	6,413	6,942	529	8.25%		
Jet < 12,499 lbs	34	38	70	142	62	40	74	176	34	23.94%	918	960	42	4.58%		
Jet 12,500-19,999 lbs	59	53	92	204	101	49	116	266	62	30.39%	1,331	1,599	268	20.14%		
Jet 20,000-49,999 lbs	54	36	87	177	71	26	113	210	33	18.64%	1,164	1,274	110	9.45%		
Jet > 50,000 lbs	10	6	28	44	4	17	28	49	5	11.36%	261	307	46	17.62%		
Helicopter	68	72	131	271	142	53	89	284	13	4.80%	1,190	1,229	39	3.28%		
Total Powered Aircraft	1,393	1,368	1,788	4,549	2,469	1,333	2,120	5,922	1,373	30.18%	26,744	28,434	1,690	6.32%		
Gliders	-	-	-	-	-	-	-	-	-	0.00%	5,780	5,146	(634)	(10.97%)		
Total Operations	1,393	1,368	1,788	4,549	2,469	1,333	2,120	5,922	1,373	30.18%	32,524	33,580	1,056	3.25%		

	COMMENTS										Year over Year				Notes	
	2016				2017				difference	%	1/1/16-12/31/16	1/1/17-12/31/17	difference	%		
	Oct	Nov	Dec	Q4	Oct	Nov	Dec	Q4			1/1/16-12/31/16	1/1/17-12/31/17				
Comment Location																
Alder	-	-	-	-	2	-	-	2	2	100.00%	19	77	58	305.26%		
Glenshire	7	3	2	12	4	5	1	10	(2)	(16.67%)	105	69	(36)	(34.29%)		
Martis Valley Estates	4	6	7	17	4	2	-	6	(11)	(64.71%)	72	103	31	43.06%		
Northstar/ Martis	2	6	2	10	1	-	-	1	(9)	(90.00%)	129	26	(103)	(79.84%)		
Olympic Heights	4	5	7	16	6	4	5	15	(1)	(6.25%)	142	144	2	1.41%		
Prosser Lakeview	1	2	4	7	3	1	2	6	(1)	(14.29%)	99	31	(68)	(68.69%)		
Russell Valley	-	-	-	-	1	1	-	2	2	100.00%	-	7	7	100.00%		
Sierra Meadows	-	-	-	-	3	1	-	4	4	100.00%	31	38	7	22.58%		
Tahoe Basin	-	-	-	-	-	-	-	-	-	0.00%	-	9	9	100.00%		
Tahoe Donner	2	4	5	11	4	1	-	5	(6)	(54.55%)	76	108	32	42.11%		
Unknown/Other	-	-	-	-	-	-	-	-	-	0.00%	7	5	(2)	(28.57%)		
Total Comments	20	26	27	73	28	15	8	51	(22)	(30.14%)	680	617	(63)	(9.26%)		
Comment Type																
Piston	4	13	7	24	14	5	2	21	(3)	(12.50%)	208	229	21	10.10%		
Turbine	9	4	6	19	5	5	3	13	(6)	(31.58%)	118	111	(7)	(5.93%)		
Jet	6	7	14	27	5	3	3	11	(16)	(59.26%)	304	232	(72)	(23.68%)		
Helo	1	1	-	2	3	-	-	3	1	50.00%	6	18	12	200.00%		
Unknown	-	1	-	1	1	2	-	3	2	200.00%	44	27	(17)	(38.64%)		
Total Comments	20	26	27	73	28	15	8	51	(22)	(30.14%)	680	617	(63)	(9.26%)		
Operations per Comment				62.3				116.1		86.34%	48	54	7	13.79%		

**Truckee Tahoe Airport District
Annual Operations Summary
2013-2017**

	Operations							Operations Mix						
	2013	2014	2015	2016	2017	Total	Avg. Change	2013	2014	2015	2016	2017	Total	Change
Operations Detail														
Piston Single	8,047	8,293	10,676	14,262	14,978	56,256	16.80%	37.22%	36.43%	38.66%	43.85%	44.60%	40.74%	7.38%
Piston Twin	1,042	1,110	1,524	1,205	1,145	6,026	2.38%	4.82%	4.88%	5.52%	3.70%	3.41%	4.36%	-1.41%
Total Piston	9,089	9,403	12,200	15,467	16,123	62,282	15.41%	42.04%	41.31%	44.18%	47.56%	48.01%	45.10%	5.97%
Turbo Prop	3,036	3,691	5,756	6,413	6,942	25,838	22.97%	14.04%	16.21%	20.85%	19.72%	20.67%	18.71%	6.63%
Jet < 12,499 lbs	1,046	1,276	924	918	960	5,124	-2.12%	4.84%	5.61%	3.35%	2.82%	2.86%	3.71%	-1.98%
Jet 12,500-19,999 lbs	946	1,027	1,290	1,331	1,599	6,193	14.02%	4.38%	4.51%	4.67%	4.09%	4.76%	4.48%	0.39%
Jet 20,000-49,999 lbs	974	1,145	970	1,164	1,274	5,527	6.94%	4.51%	5.03%	3.51%	3.58%	3.79%	4.00%	-0.71%
Jet > 50,000 lbs	-	-	227	261	307	795	n/a	0.00%	0.00%	0.82%	0.80%	0.91%	0.58%	0.91%
Total Jet	2,966	3,448	3,411	3,674	4,140	17,639	8.69%	13.72%	15.15%	12.35%	11.30%	12.33%	12.77%	-1.39%
Helicopter	1,638	1,333	1,138	1,190	1,229	6,528	-6.93%	7.58%	5.86%	4.12%	3.66%	3.66%	4.73%	-3.92%
Total Powered Aircraft	16,729	17,875	22,505	26,744	28,434	112,287	14.18%	77.38%	78.52%	81.50%	82.23%	84.68%	81.31%	7.29%
Gliders	4,889	4,889	5,108	5,780	5,146	25,812	1.29%	22.62%	21.48%	18.50%	17.77%	15.32%	18.69%	-7.29%
Total Operations	21,618	22,764	27,613	32,524	33,580	138,099	11.64%	100.00%	100.00%	100.00%	100.00%	100.00%	100.00%	0.00%

Truckee Tahoe Airport District Operations and Community Comment Report 2013-2017

	OPERATIONS																									
	2013					2014					2015					2016					2017					Total
	Q1	Q2	Q3	Q4	Total	Q1	Q2	Q3	Q4	Total	Q1	Q2	Q3	Q4	Total	Q1	Q2	Q3	Q4	Total	Q1	Q2	Q3	Q4	Total	
Operations Detail																										
Piston Single	2,422	1,644	2,327	1,654	8,047	1,804	1,800	2,338	2,351	8,293	1,561	1,996	4,594	2,525	10,676	2,335	3,389	6,189	2,349	14,262	1,614	3,910	6,122	3,332	14,978	56,256
Piston Twin	292	204	324	222	1,042	292	276	310	232	1,110	326	390	581	227	1,524	320	230	458	197	1,205	224	261	450	210	1,145	6,026
Turbo Prop	882	588	1,048	518	3,036	872	763	1,276	780	3,691	1,174	1,179	2,274	1,129	5,756	1,380	1,340	2,528	1,165	6,413	1,398	1,496	2,653	1,395	6,942	25,838
Jet < 12,499 lbs	236	196	396	218	1,046	364	252	468	192	1,276	215	161	415	133	924	188	198	390	142	918	144	189	451	176	960	5,124
Jet 12,500-19,999 lbs	204	156	368	218	946	192	183	426	226	1,027	227	210	622	231	1,290	236	295	596	204	1,331	290	305	738	266	1,599	6,193
Jet 20,000-49,999 lbs	238	172	436	128	974	220	163	594	168	1,145	144	167	503	156	970	182	263	542	177	1,164	232	268	564	210	1,274	5,527
Jet > 50,000 lbs	-	-	-	-	-	-	-	-	-	-	67	20	115	25	227	61	58	98	44	261	9	63	186	49	307	795
Helicopter	387	424	462	365	1,638	232	374	410	317	1,333	244	352	331	211	1,138	211	252	456	271	1,190	236	272	437	284	1,229	6,528
Total Powered Aircraft	4,661	3,384	5,361	3,323	16,729	3,976	3,811	5,822	4,266	17,875	3,958	4,475	9,435	4,637	22,505	4,913	6,025	11,257	4,549	26,744	4,147	6,764	11,601	5,922	28,434	112,287
Gliders	-	823	3,957	109	4,889	-	823	3,957	109	4,889	-	1,000	4,108	-	5,108	-	1,216	4,564	-	5,780	-	888	4,258	-	5,146	25,812
Total Operations	4,661	4,207	9,318	3,432	21,618	3,976	4,634	9,779	4,375	22,764	3,958	5,475	13,543	4,637	27,613	4,913	7,241	15,821	4,549	32,524	4,147	7,652	15,859	5,922	33,580	138,099

	COMMENTS																									
	2013					2014					2015					2016					2017					Total
	Q1	Q2	Q3	Q4	Total	Q1	Q2	Q3	Q4	Total	Q1	Q2	Q3	Q4	Total	Q1	Q2	Q3	Q4	Total	Q1	Q2	Q3	Q4	Total	
Comment Location																										
Alder	-	1	3	-	4	-	-	10	-	10	-	3	15	-	18	-	-	19	-	19	-	14	61	2	77	128
Glenshire	2	1	7	-	10	2	7	24	8	41	9	19	33	4	65	17	19	57	12	105	12	15	32	10	69	290
Martis Valley Estates	5	1	-	-	6	1	1	4	-	6	3	8	12	2	25	5	16	34	17	72	15	30	52	6	103	212
Northstar/ Martis	-	5	12	3	20	11	11	-	1	23	4	4	24	1	33	8	22	89	10	129	3	2	20	1	26	231
Olympic Heights	3	1	9	2	15	7	9	58	16	90	18	21	67	19	125	24	31	71	16	142	12	36	81	15	144	516
Prosser Lakeview	1	7	17	1	26	1	2	18	5	26	13	14	90	6	123	23	24	45	7	99	3	4	18	6	31	305
Russell Valley	-	-	-	-	-	-	-	-	-	-	-	-	-	-	-	-	-	-	-	-	-	1	4	2	7	7
Sierra Meadows	-	1	5	-	6	-	6	19	9	34	6	6	8	2	22	2	9	20	-	31	1	15	18	4	38	131
Tahoe Basin	-	-	-	-	-	-	-	-	-	-	-	-	-	-	-	-	-	-	-	-	-	3	6	-	9	9
Tahoe Donner	6	7	4	2	19	-	2	22	2	26	4	7	29	10	50	1	14	50	11	76	20	28	55	5	108	279
Unknown/Other	-	2	11	-	13	-	-	16	-	16	-	-	2	-	2	-	2	5	-	7	-	2	3	-	5	43
Total Comments	17	26	68	8	119	22	38	171	41	272	57	82	280	44	463	80	137	390	73	680	66	150	350	51	617	2,151
Comment Type																										
Piston	8	4	12	2	26	3	10	61	15	89	10	30	67	18	125	20	61	103	24	208	19	70	119	21	229	677
Turbine	2	1	4	1	8	4	11	12	14	41	20	19	49	11	99	21	17	61	19	118	20	19	59	13	111	377
Jet	6	17	44	3	70	12	10	73	11	106	26	27	147	13	213	33	53	191	27	304	16	50	155	11	232	925
Helo	-	1	-	-	1	-	3	1	1	5	1	5	4	2	12	-	-	4	2	6	7	4	4	3	18	42
Unknown	1	3	8	2	14	3	4	24	-	31	-	1	13	-	14	6	6	31	1	44	4	7	13	3	27	130
Total Comments	17	26	68	8	119	22	38	171	41	272	57	82	280	44	463	80	137	390	73	680	66	150	350	51	617	2,151
Operations per Comment	274	162	137	429	182	181	122	57	107	84	69	67	48	105	60	61	53	41	62	48	63	51	45	116	54	64