



TURBO SKYHAWK JT-A

---





## **A NEW ERA OF JET-FUELED PERFORMANCE**

In a world of constant transformation, the Cessna® Turbo Skyhawk® JT-A® aircraft is disruptive technology. This new and improved Skyhawk option employs a technologically advanced diesel engine for enhanced performance. It features increased fuel efficiency and simplified power management, all while accommodating growing demands and environmental regulations across the globe. Flight training may never be the same again.

# ENGAGING THE NEXT NEW PILOTS

## NEXT-GENERATION AVIONICS

Garmin® G1000™ NXi avionics provide a brand new cockpit interface with enhanced graphics, faster hardware, new features and optional wireless connectivity.

## EASY POWER CONTROL

A single-lever power control replaces the classic throttle and mixture controls, making power setting simple.

## ENHANCED VISIBILITY

Dual LED landing and recognition lights offer enhanced visibility and strong illumination for night flying.

## WINGS DESIGNED FOR THE STUDENT

High wing design offers better visibility and stability, as well as greater ground clearance, making it optimal for student pilots.

## NOISE REDUCTION

A new composite three-blade constant-speed propeller enhances performance from takeoff to touchdown while reducing noise.

## POWERED FOR PERFORMANCE

A 155-horsepower Continental™ CD-155 liquid-cooled, turbo diesel engine delivers enhanced performance and ample economical power while lowering fuel consumption.

## ROBUST LANDING GEAR

A sturdy tricycle landing system is ideal for entry-level landings and ready for heavy braking and taxiing.

## ROOM FOR OBSERVERS

Seating for three passengers provides optimal space for students, instructors and observers to travel comfortably and enjoy the views.

## EASY ACCESS

Dual entry doors allow for convenient loading and unloading for students and instructors.

## PROVEN RUGGED AIRFRAME DESIGN

Improved both inside and out, Turbo Skyhawk JT-A's airframes are built for durability.

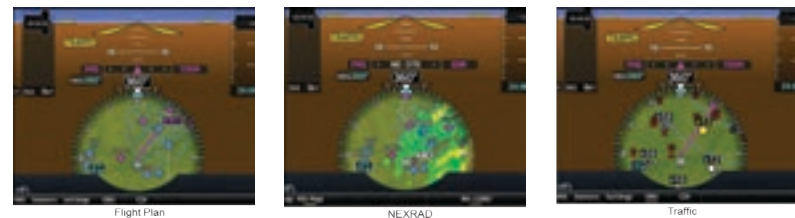




# COMMAND THE NEXT GENERATION

The Turbo Skyhawk JT-A is powered by the latest technology in integrated cockpit avionics, the Garmin G1000 NXi. With an improved graphical interface, more powerful hardware, higher-resolution displays, added functionality to improve situational awareness and optional wireless technology, managing the flight deck has never been easier.

## G1000 NXi



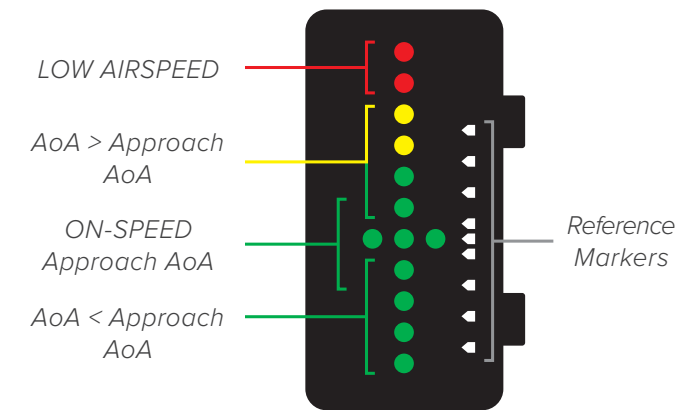
Enhanced HSI Functionality



A single-lever power control simplifies all phases of flight.

### NEW FEATURES AND OPTIONS

- + Standard ADS-B Out and In
- + Optional wireless database and flight plan loading
- + Integrated VFR Sectional Charts
- + IFR High and Low Charts with Night Mode
- + Enhanced HSI features
- + COM frequency decoding
- + Vertical Situation Display
- + Selectable Visual Approaches
- + Optional Surface Watch for runway safety
- + Enhanced graphics and faster processing
- + Improved joystick with smoother panning
- + Simplified maintenance



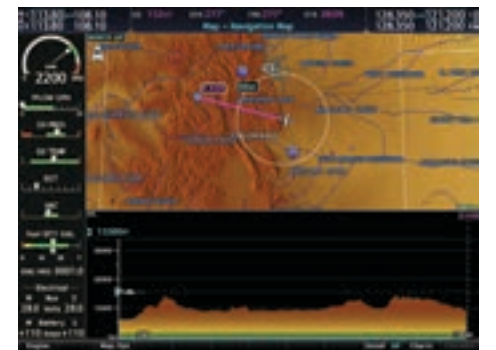
An Angle of Attack System is standard on all Skyhawks, delivering precise information for increased stall awareness, low-speed maneuvering capability and consistent maneuvers during takeoff, climb, cruise, approach and landings.



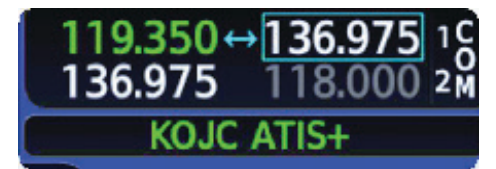
VFR Sectionals



IFR High and Low Charts



Vertical Situation Display



COM Frequency Decoding



## PRIMED FOR THAT FIRST-FLIGHT **ADRENALINE RUSH**



The Turbo Skyhawk JT-A offers a proven classroom experience that instructors, students and observers have come to know and expect. Rugged and built to take the abuse of pilots-in-training, the JT-A features three seats, large wraparound windows and soft LED lighting throughout the cabin, maintaining comfortable conditions throughout every lesson. A 12-volt power outlet keeps your mobile devices fully charged, while seatbelt airbags help keep everyone secure. Farther aft, a cargo area fully equipped with tie-down rings allows for 120 pounds (54 kilograms) of gear. Customize the cabin to your preferences with optional skylights, leather seats, an aft bench and air-conditioning.



# GO FASTER, GO FARTHER, SAVE MORE

Featuring a Continental CD-155 liquid-cooled, in-line four-cylinder turbocharged engine with double overhead camshafts, direct fuel injection and common-rail technology, the Turbo Skyhawk JT-A is your gateway to globally available fuel and lead-free emissions. A redundant FADEC system precisely manages engine combustion for enhanced reliability and smooth operations. The high-efficiency diesel engine is controlled through a single power lever and delivers 25 percent lower fuel burn than the standard Skyhawk. Add in the fact that Jet A typically costs less than avgas around the globe and the fuel advantage becomes clear. These upgrades significantly enhance the performance of your aircraft, including faster climbs, increased range, more speed and fuel savings.

#### APPROVED FUEL GRADES

Jet A	(ASTM 1655)
Jet A-1	(ASTM D 1655)
Diesel	(DIN EN 590)

# CONTINENTAL CD-155

155 Horsepower (114 Kilowatts) Turbodiesel

▶▶ Liquid-cooled in-line four cylinders

▶▶ 85 percent max recommended cruise power

▶▶ Bore 3.26 in (83 mm)  
Stroke 3.62 in (92 mm)  
Compression 18:1

▶▶ 1:1.69 gearbox ratio with mechanical dampening and overload release

▶▶ 2,300 RPM takeoff and max continuous power

▶▶ 2,100-hour TBR maintenance interval

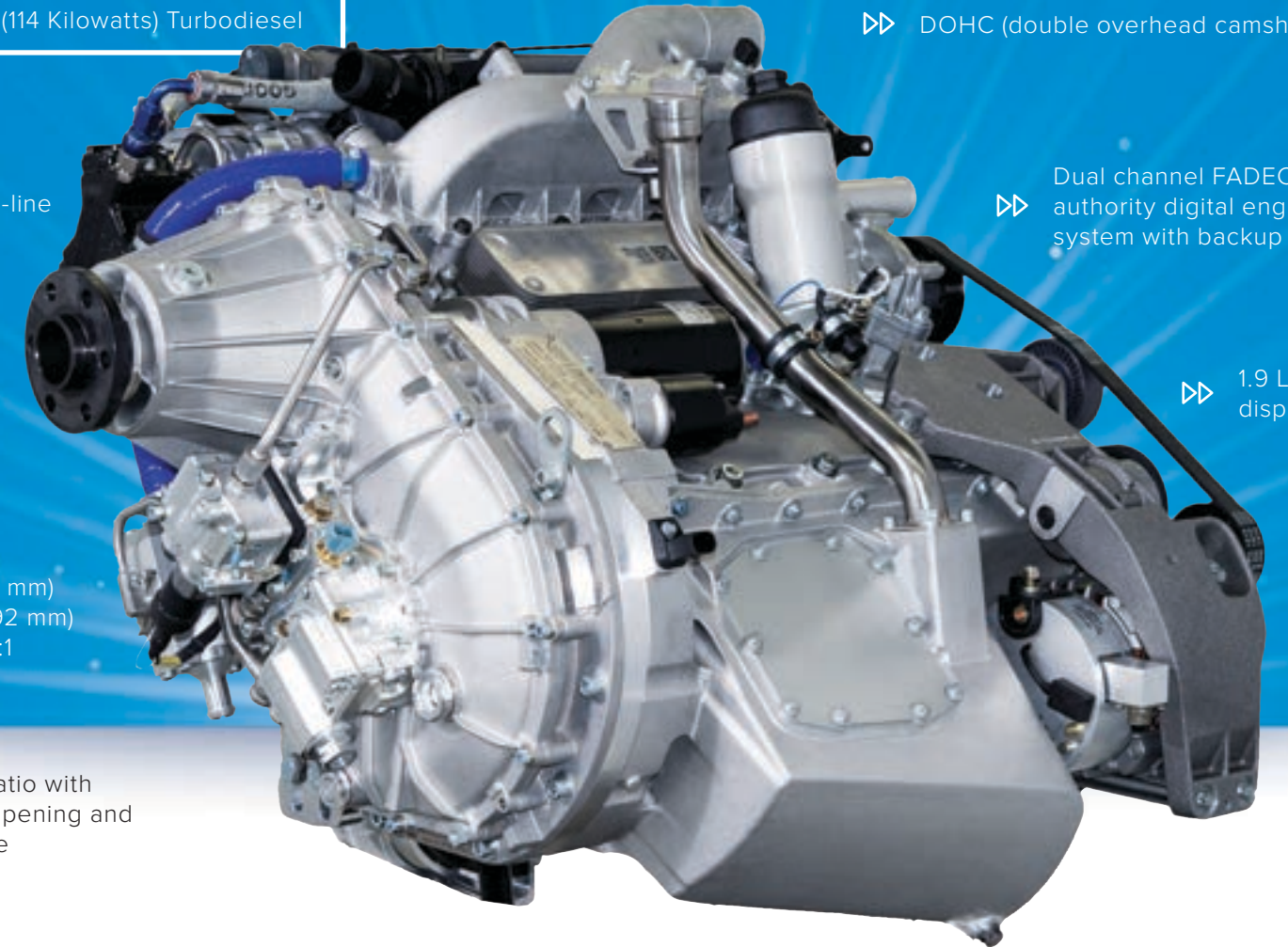
▶▶ Wet sump oil system

▶▶ DOHC (double overhead camshafts)

▶▶ Dual channel FADEC (full authority digital engine control) system with backup battery

▶▶ 1.9 L (121.5 cu in) displacement

▶▶ Direct fuel injection and common-rail technology



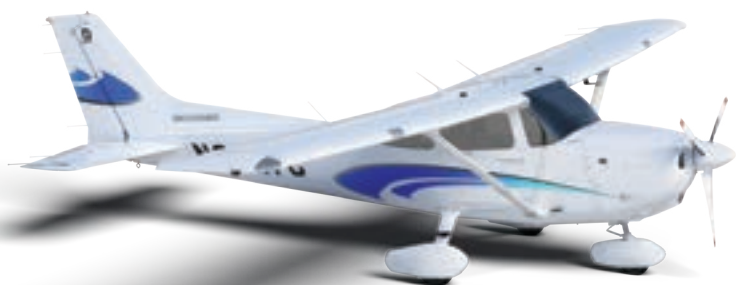
**25%**  
LOWER  
FUEL BURN PER HOUR

**155**  
HORSEPOWER

**349**  
FT-LB OF TORQUE

# EXTERIOR DESIGN SELECTION

Choose from several different paint combinations, and outfit your Turbo Skyhawk JT-A to fit your style preferences.



## RADIATE



Medium Concord Blue  
Cumulus Gray  
Starlight Silver  
Black



Blue  
Cyan  
Light Gray  
Black



Dark Red  
Red  
Light Blue  
Black



## OBVERSE



Medium Concord Blue  
Cumulus Gray  
Starlight Silver  
Black



Blue  
Cyan  
Black



Dark Red  
Red  
Light Blue  
Black

## DESIGNED FOR THE FUTURE

Backed by Textron Aviation, the world's leader in flight training solutions, the Turbo Skyhawk JT-A meets higher standards in environmental regulations and leads the forward thinking needed to foster new growth in aviation. By seamlessly integrating diesel-engine technology and eliminating the need for leaded fuel, the JT-A leverages widely available energy with relentless efficiency. These smart power plant innovations, paired with a proven and respected airframe, create new opportunities for aspiring pilots and successful flight training operations to help spread the magic of flight to people everywhere.

## SPECIFICATIONS

### PERFORMANCE

Takeoff Ground Roll	944 ft	288 m
Max Climb Rate	712 fpm	217 mpm
Service Ceiling	14,000 ft	4,267 m
Max Cruise Speed	134 ktas	248 km/h
Max Range	885 nm	1,639 km

### TURBO DIESEL POWER PLANT

Manufacturer	Continental
Model	CD-155
Power Output	155 hp

### WEIGHTS

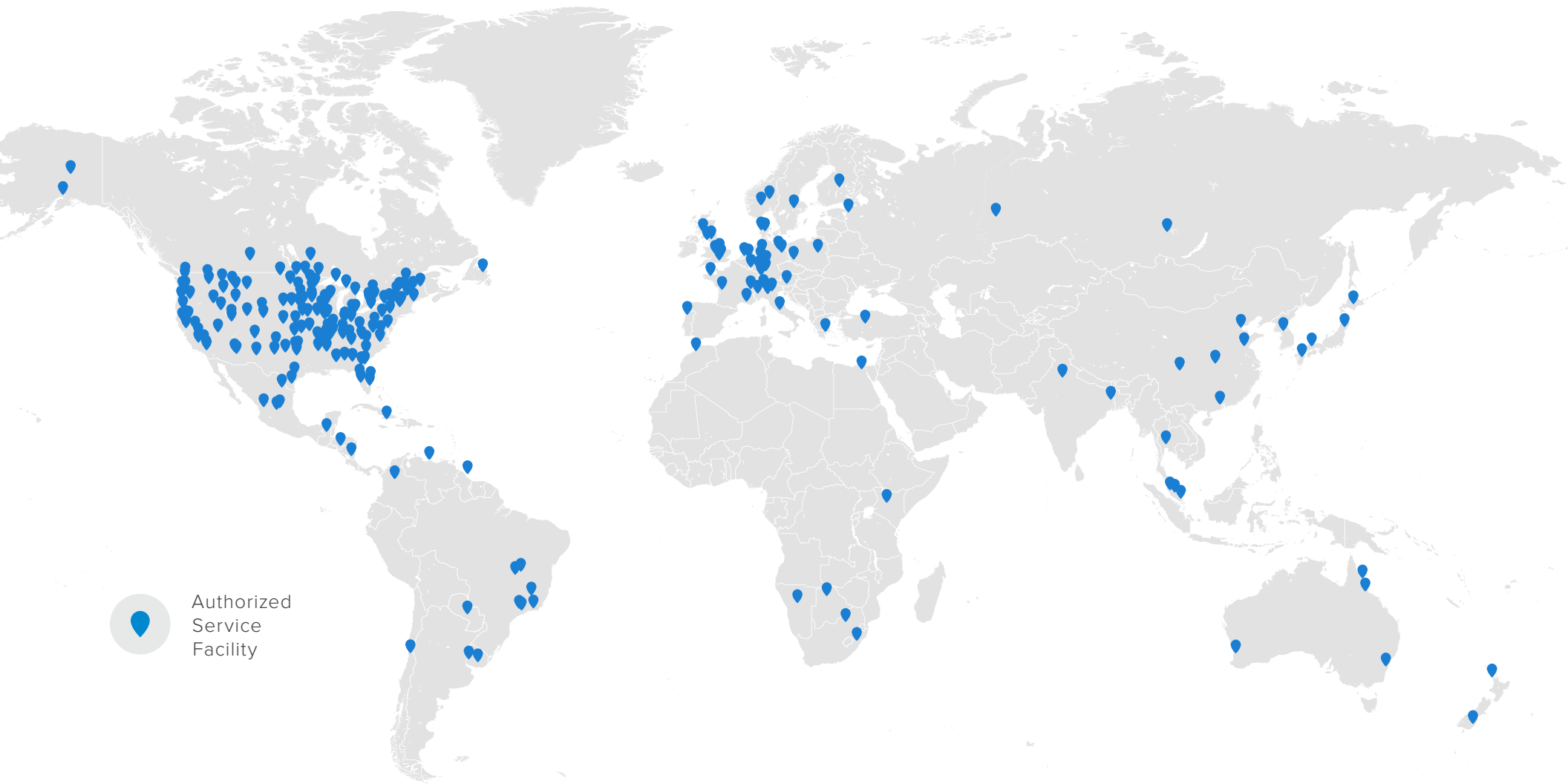
Max Takeoff Weight	2,550 lb	1,157 kg
Basic Empty Weight	1,780 lb	807 kg
Useful Load	772 lb	350 kg

### INTERIOR

Cabin Height	48.0 in	1.22 m
Cabin Width	39.5 in	1.00 m
Cabin Length	11 ft 10 in	3.61 m
Baggage Capacity	120 lb	364 kg
Max Occupants		4

*\*Performance data is based on standard conditions with zero wind. Field performance assumes a level, hard-surface, dry runway. Range is based on a ferry mission with one pilot (170 pounds) at 60% power with 45 minutes reserve.*





# THE LARGEST AND MOST CAPABLE SERVICE NETWORK

Textron Aviation's extensive engineering and manufacturing resources provide you with a worldwide network of technical support experts and maintenance solutions.

- ✔ Field service representatives from Textron Aviation are equipped with extensive technical manuals and detailed vendor documentation to answer your questions.
- ✔ More than 350 authorized service facilities around the world are uniquely qualified to service your piston aircraft.
- ✔ Our inventory carries more than \$150 million in piston parts with a 99.6 percent same-day ship rate to keep your aircraft flying.

Fly with confidence knowing you're backed by the most capable service and support network in general aviation.

[TXTAVsupport.com](http://TXTAVsupport.com)

[Pubs.txtav.com](http://Pubs.txtav.com)

**TEXTRON AVIATION**  
PERFORMANCE SUPPORT

## THE WORLD'S LEADING AIRCRAFT MANUFACTURER

Textron Aviation brings smart innovation to the market — leveraging the latest technology in our industry-leading Beechcraft®, Cessna® and Hawker® aircraft — a cornerstone of 90 years of performance. Together, Cessna and Beechcraft account for more than half of all general aviation aircraft flying, having delivered more than 250,000 aircraft that exceed 100 million flight hours and operate in more than 143 countries. In the last five years, 10 new Textron Aviation aircraft products have been certified and delivered. From Citation® jets, the world's best-selling business jets, to the class-leading King Air® and Caravan® turboprops to the Cessna TTX® advanced piston performer, Textron Aviation leads the industry with the broadest product portfolio and the largest aircraft service network in the world.



# INNOVATION PERFORMANCE LEADERSHIP





**CESSNA.COM** | U.S. **+1.844.44.TXTAV** | INTERNATIONAL **+1.316.517.8270**

©2017 Textron Aviation Inc. All rights reserved. Cessna & Design, Skyhawk, JT-A, TTx, Citation, Caravan, Beechcraft, Hawker, and King Air are trademarks or service marks of Textron Aviation Inc. or an affiliate and may be registered in the United States. Garmin, G1000 and Continental are trademarks or service marks of others. BROCH-PIST-172JT-A-0117