



**Response to the Request for Proposal for Professional Consulting Services  
Integrated Trails Network**

June 5, 2018

The Truckee Trails Foundation (TTF) has been working to facilitate and build a family-friendly, interconnected system of trails in and around Truckee for the past 15 years and is therefore keenly interested in assisting the Truckee Tahoe Airport District (TTAD) in Phase II of its integrated trails network project. The TTAD is in a unique position to be able to contribute significantly to an interconnected system of user-friendly trails in the area, and TTF believes this effort will result in significant benefit to the airport and the community.

The Truckee Trails Foundation, located at 12242 Business Park Drive, Suite 19, in Truckee, has been the local non-motorized, multi-use trails advocacy group in the region since 2002. With one full-time executive director, eight full-time seasonal staff, and an active, working board, TTF has an annual budget of \$288,000 built around a mission of safe, sustainable, interconnected trail planning, building, and maintenance. TTF is uniquely qualified to assist the TTAD in this integrated trails network project.

To ensure the greatest outcome of, development of Phase II will require the following:

- Meet with airport staff and ACAT members to re-visit the Truckee Tahoe Airport Trails Master Plan and verify project goals.
- Coordinate and facilitate local stakeholders to identify opportunities and challenges associated with proposed trails project. Stakeholders would include the Town of Truckee, Truckee Donner Recreation and Park District, Truckee Donner Land Trust, Army Corps of Engineers, Tahoe Truckee Sanitation Agency (TTSA) and Truckee Sanitation District (TSD). This coordination will include individual meetings with stakeholders, followed by multi-stakeholder meetings.
- Conduct a thorough assessment of the different options for the most efficient completion of the desired trail connections.
- Provide a thorough description and assessment of funding partners and grant opportunities.
- Create an analysis of potential risks associated with airport trails.
- Develop of a summary report and slide presentation for a public forum.

**Qualifications**

Although this will be an intensive process, the Truckee Trails Foundation is uniquely qualified to take on the master planning effort. TTF has been active in the Truckee community since 2002. Through our efforts we have developed solid working relationships with the Tahoe Truckee Airport, Town of Truckee council members and staff, the Truckee Donner Recreation and Park District, local Army Corps of Engineers, United States Forest Service, and major businesses in town. Our board and staff have been

actively involved as trails master planning committee members on every iteration of the Truckee Trails and Bikeways Master Plan, and we are currently working with the USFS on a master plan for dirt trails in Placer and Nevada Counties. TTF was also hired to complete the current version of the Truckee Tahoe Airport Trails Master Plan. Through all of our efforts, our main goal has been community connectivity through trails and bikeways.

More specifically, work on this effort will involve the following individuals:

**Allison Pedley, Executive Director.** Allison has been with the Truckee Trails Foundation for nine years. As ED, she created TTF's dirt trail building & maintenance program, working closely with the USFS and Truckee Donner Land Trust. TTF now builds, on average, 4 miles of new trail every year while also maintaining over 100 miles of existing trail. Allison also worked with the Town of Truckee on completion of the Truckee River Legacy Trail to Glenshire and Brockway Road Trail. As well, she actively advocated to get a trails tax measure on the June 2014 ballot and subsequently volunteered countless hours to help guide the Measure R for trails campaign to a major victory. Prior to moving to Truckee, Allison worked for Ross Strategic, a consulting firm in Seattle. Here, she helped guide several innovative long-term federal and state environmental policy efforts, including the Environmental Protection Agency's Pollution Prevention in Permitting program, and Idaho's Lower Boise River Effluent Trading Program. Through this work, Allison became practiced in working with multiple and diverse stakeholders to reach consensus and favorable results.

**Paco Lindsay, Board Member.** Paco will also be providing critical expertise to assist with this effort. Paco has been a strong advocate for trails in Truckee for over twenty years and holds a unique familiarity with the key players and the variety of trails issues in our town. Paco played a key role in the development of both the town of Truckee Trails and Bikeways Master Plan and the Truckee Tahoe Airport Trails Master Plan.

### **Cost**

TTF proposes to complete this master planning process at a rate of **\$65 per hour**, plus material expenses. Any necessary GIS mapping will be an additional \$750 flat fee.



**Proposal  
for  
Professional Consulting Services  
Integrated Trails Network**

**June 8, 2018**

Truckee River Legacy Trail  
Photo Courtesy of Grant Kaye



**TRUCKEE  
TAHOE  
AIRPORT**

**Truckee Tahoe Airport District**  
10356 Truckee Airport Road  
Truckee, CA 96161  
530.587.4119 EXT 106



Carson City • Fallon • Lake Tahoe • Reno

[www.LumosInc.com](http://www.LumosInc.com)

**Lake Tahoe**

225 Kingsbury Grade, Suite A | P.O. Box 3570  
Stateline, Nevada 89449  
775.588.6490

June 8, 2018

Hardy Bullock – Director of Aviation & Community Services  
Truckee Tahoe Airport District  
10356 Truckee Airport Road  
Truckee, CA 96161

**Subject: Executive Summary – Integrated Trails Network**

Dear Mr. Bullock:

Lumos & Associates (Lumos) appreciates the opportunity to present you with our proposal for the Integrated Trails Network project. Attached please find our proposed team, qualifications, and supporting information for your consideration.

Lumos has been completing trail planning and design in the Truckee area for over 13 years. Through this work, we have become well acquainted with the existing trails system in the Truckee area and have designed many of the trails including Phases 2, 3A and 3B of the Truckee River Legacy Trail. We intend to bring the same high quality experience that led to the success of those projects to the Truckee Tahoe Airport District (District) for the Integrated Trails Network.

Lumos understands completion of the proposed scope of services will result in the District being able to review the most feasible trail alternatives leading from Airport Road near Highway 267 to connect to the Legacy Trail. We are well versed in developing information and planning projects to assist our clients in understanding possible options, funding opportunities, risks, and other key considerations that will allow for the best, informed decisions to be made. Our clients will attest to our ability to understand not only the required scope of a project but also how we strive to understand the best way to specifically integrate each project into the community. We believe we are the firm that is best suited to assist the District in the development of the Integrated Trails Network because of how we approach projects and our past experience with the development of a variety of multi-use trails and, specifically, trails in the Truckee area.

The Truckee Tahoe Airport Master Plan will provide a useful framework from which Lumos will be able to complete the proposed scope. Because the Airport is uniquely situated in two counties adjacent to residential neighborhoods with both an existing extensive trails network and proposed trails in close proximity, coordination with the many stakeholders will be key. Lumos has existing relationships with many of the anticipated stakeholders including the Town of Truckee, Placer County, Truckee Donner Recreation and Park District and Caltrans. Integration of any proposed trail across the Airport with the existing and proposed trails is critical to ensuring the trail system will be of value to the community as well as ensuring the District's resources are well allocated.

We are excited to be considered for this project and look forward to hearing from you.

Sincerely,

A handwritten signature in blue ink that reads 'Michael Bennett'.

Michael Bennett, P.E.  
Director, Engineering Division

---

# Table of Contents

**EXECUTIVE SUMMARY  
(COVER LETTER)**

**FIRM OVERVIEW**

**LOCATION**

**QUALIFICATIONS & PAST  
EXPERIENCE**

**LIST OF SUBCONSULTANTS**

**ADDITIONAL COMMENTS**

**PRICING SCHEDULE**



# Lumos Firm Overview

Designing projects that improve and enhance the quality of life for generations to come is what inspires our team at Lumos & Associates to tackle the day. Our team of professionals incorporate their skills, passion and dedication to the community they serve and create new and innovative solutions for our clients. Lumos & Associates fosters a work culture where problem solvers flourish, accomplishing their best work; the end result being a project that achieves the established goals.

### Lumos Firm Snapshot

Established in 1978  
Approximately 90 employees  
4 locations  
3 fully-equipped laboratories

### Lumos Employee Snapshot

11 Engineers licensed in California  
2 Surveyors licensed in California

**We are problem solvers.** Through civil engineering, structural engineering, surveying, geotechnical, construction management, development, and planning services, we, together with our clients, improve the communities where our families live, work, and play.

Lumos & Associates was established in Nevada’s capital, Carson City, with offices in Reno, Fallon, and iconic Lake Tahoe. We serve clients throughout the Western United States in both rural and urban settings and employ more than 90 highly-skilled professionals.

The Lumos philosophy in approaching all work assignments is that successful project planning must evolve from a clear understanding of the social, cultural, economic, and regulatory context of each project. At project inception, our staff works closely with clients to establish realistic goals and to formulate alternatives and solutions in order to achieve the successful implementation of projects.

Our passion for the outdoors has lead us to design and/or build over 15 bicycle and pedestrian trails in the last 10 years, including five in the Town of Truckee and six in the Lake Tahoe Basin. We know Truckee, and we know how to plan and design trails. Through our trail designs, we aim to connect communities to the outdoors.

**We want to improve tomorrow by designing enduring communities today.**



Truckee River Legacy Trail  
Photo Courtesy of Grant Kaye

---

## Lumos Overall Capabilities

### Civil Engineering

- ◇ Airports
- ◇ Bicycle & Pedestrian Paths
- ◇ Capital Improvement Plans
- ◇ Erosion Control
- ◇ Geotechnical Engineering
- ◇ Hydrology, Hydraulics & FEMA Mapping Railroads
- ◇ Special Assessment Districts
- ◇ Streets & Highways
- ◇ Subdivision Plans
- ◇ SWPPP
- ◇ Traffic Control Plans
- ◇ Wastewater Treatment Plants & Systems
- ◇ Water Rights
- ◇ Water Systems, Production Wells & Storage

### Surveying & Mapping

- ◇ Aerial Photo Control
- ◇ Fixed Wing Aerial Photogrammetry
- ◇ ALTA Surveys
- ◇ Boundary Surveys
- ◇ Computerized Mapping
- ◇ 3-D Scanning
- ◇ UAS Mapping
- ◇ Construction Staking
- ◇ GIS Capabilities
- ◇ GPS Capabilities
- ◇ Parcel Maps
- ◇ Route Surveys
- ◇ Topographic Surveys

### Geotechnical & Laboratory Capabilities

- ◇ Bolt Inspection
- ◇ Compaction Testing
- ◇ Contract Close-out
- ◇ Fireproofing Inspection
- ◇ Foundation Investigations
- ◇ Geologic Hazard Investigations
- ◇ Geotechnical Investigations
- ◇ NDT Level III Testing
- ◇ Portable Laboratory Facilities
- ◇ Project Administration
- ◇ Project Documentation
- ◇ Reinforced Concrete Inspection
- ◇ Soils/Concrete/Asphalt/Aggregate Testing
- ◇ Structural Steel & Welding Inspection
- ◇ Structural Masonry Inspection
- ◇ Underground Utilities

### Landscape Architecture

- ◇ Custom Estate Design
- ◇ Destination Resorts, Gaming, & Hospitality
- ◇ Institutional & Government Campus Design
- ◇ Irrigation
- ◇ Office, Commercial, & Industrial Development
- ◇ Parks & Recreation
- ◇ Event & Entertainment Venues
- ◇ Residential & Golf Community Design
- ◇ Streetscape Design
- ◇ Transportation & Infrastructure

### Planning

- ◇ BLM Permitting
- ◇ Commercial, Industrial, Institutional, & Government Site Planning
- ◇ Community Outreach
- ◇ Comprehensive Land Use Planning
- ◇ Economic Revitalization Strategies
- ◇ Entitlement Processing
- ◇ Grant Application & Funding Support
- ◇ Planned Unit Developments
- ◇ Public Engagement
- ◇ Site Analysis & Feasibility Studies
- ◇ Transportation & Transit Planning
- ◇ Urban Design

### Structural Engineering

- ◇ Geothermal Power Plants
- ◇ Transportation Facilities
- ◇ Industrial Facility Design
- ◇ Process Equipment & Machinery Support Structures
- ◇ Foundation System Design
- ◇ Mining Structures
- ◇ Electrical Substations
- ◇ Seismic Studies
- ◇ Investigations & Evaluations
- ◇ Damage & Failure Assessment
- ◇ Warehousing Buildings
- ◇ Water Conveyance & Water Retention Structures
- ◇ Drainage Structures
- ◇ Wastewater Facilities
- ◇ Earth Retaining Structures
- ◇ Historic Building Preservation
- ◇ Educational Buildings
- ◇ Feasibility & Project Development Studies

## Location

### Lumos Tahoe Office

225 Kingsbury Grade  
Stateline, NV 89449  
775.588.6490

Services accomplished in this office: Project Management, Civil Engineering, and Designing

### Lumos Reno Office – Headquarters

9222 Prototype Drive  
Reno, NV 89521  
775.827.6111

Services accomplished in this office: Surveying, Geotechnical Engineering, Landscape Architecture, and Structural Engineering

### Lumos Carson City Office

308 N. Curry Street, Suite 200  
Carson City, NV 89703  
775.883.7077

Services accomplished in this office: Principal-in-Charge, Surveying, and Geotechnical Engineering

**Work on this project will be primarily done from Lumos' Tahoe office with support from the Reno and Carson City offices.**

Lumos Team Member & Location	Roles & Responsibilities	Years Exp.
<b>Michael Bennett, P.E.</b> Carson City Office	<b>Principal-in-Charge &amp; Engineering Director.</b> Allocation of resources, contractual items, quality oversight	<b>22</b>
<b>Michelle Gamble, P.E., QSD/QSP</b> Lake Tahoe Office	<b>Project Manager.</b> Client main point of contact, project oversight and coordination, stakeholder outreach, funding identification, quality assurance, quality control	<b>17</b>
<b>Chas Macquarie, P.E.</b> Carson City Office	<b>Senior Engineer.</b> Alternatives analysis, opportunities and constraints identification	<b>38</b>
<b>Jason Tokheim, P.E., QSD/QSP</b> Lake Tahoe Office	<b>Senior Engineer.</b> Alternatives analysis, opportunities and constraints identification	<b>12</b>
<b>Eric Villalobos, E.I.</b> Lake Tahoe Office	<b>Senior Project Designer.</b> Alignment plans and profiles, preliminary plans	<b>11</b>
<b>Mitch Burns, P.E., C.E.M.</b> Carson City/Reno Office	<b>Geotechnical Engineer.</b> Geotechnical evaluation and recommendations	<b>26</b>
<b>Greg Phillips, P.L.S.</b> Carson City/Reno Office	<b>Surveying Director.</b> Survey, basemapping, plats	<b>27</b>
<b>Marc Chapelle, RLA</b> Reno Office	<b>Landscape Architect.</b> Aesthetic trail elements	<b>28</b>
<b>Terrence Tobey, S.E., P.E.</b> Reno Office	<b>Structural Engineer.</b> Input on wall and structure options	<b>35</b>



## Qualifications and Previous Experience

### Trout Creek and Tahoe Donner Trails, Town of Truckee, Truckee, CA — 2011-2015

In 2011, the Town of Truckee selected Lumos to perform an alignment alternatives analysis and preliminary design for two trail segments totalling over three miles. The project, known as the Tahoe Donner to Downtown Recreational Trail, consisted of an east-west trail connecting Northwoods Boulevard to Pioneer Trail and a north-south trail connecting Mougale Lane to Bridge Street. The scope of work included baseline environmental and cultural studies, and Lumos included JBR Environmental and Far Western Anthropological Research Group on our team to cover these tasks. Lumos prepared the preliminary design report, and the Town then retained Lumos to prepare the final plans and specifications for over 8,000 feet of trail from Northwoods Boulevard to Bridge Street. Phase 1, known as the Trout Creek Trail, is 4,200 feet long and was constructed in 2014. Phase 2, known as the Tahoe Donner Trail, which included trailhead parking and an 80-foot bridge over Trout Creek was completed in 2016.

**Key Personnel:** Mike Bennett, Principal-in-Charge; Chas Macquarie, Project Manager; Greg Phillips, Survey Manager; Mitch Burns, Geotechnical Engineer

**Client Contact:** Dan Wilkins, Director of Public Works, & Jessica Thompson, Project Manager, Town of Truckee, 530.582.7700

<b>Engineer's Estimate (Ph 2)</b>	\$1,479,582	<b>Original Completion Date</b>	June 2016
<b>Actual Award</b>	\$1,190,683	<b>Actual Completion Date</b>	July 2016
<b>Final Project Cost</b>	\$1,183,523		

### Truckee River Legacy Trail Phase 3B, Town of Truckee, Truckee, CA — 2012-2014

Lumos provided basemapping, alternatives analysis, preliminary design, and a preliminary design report for nearly three miles of recreational trail on the south side of the Truckee River east of the Town of Truckee. Lumos provided final design and bid documents for Phase 3B that includes over 11,000 feet of trail over varied terrain including steep side slopes and dense trees and crosses Martis Creek on a 148-foot clear span bridge. Several alignment alternatives were considered to minimize disturbance to wildlife habitat and extensive cultural resources. The project was complex due to the extensive cultural resources in the corridor and involvement from multiple agencies, including the Town of Truckee, the Truckee-Tahoe Sanitation Agency, the Truckee Sanitation District, Caltrans, the US Forest Service, and the Lahontan Regional Water Quality Control Board. Construction started in the fall of 2013 and was completed in 2014.

**Key Personnel:** Chas Macquarie, Principal-in-Charge and Project Manager; Greg Phillips, Survey Manager; Mitch Burns, Geotechnical Engineer

**Client Contact:** Dan Wilkins, Director of Public Works, & Becky Bucar, Engineering Manager, Town of Truckee, 530.582.7700

<b>Engineer's Estimate</b>	\$3,300,480	<b>Original Completion Date</b>	October 2014
<b>Actual Award</b>	\$2,894,908	<b>Actual Completion Date</b>	August 2014
<b>Final Project Cost</b>	\$3,125,000*		

\*Included some Town of Truckee value added items

**Nevada Stateline-to-Stateline Bikeway, South Demonstration Project, Phase 1B, 1C, & 1D, Lake Tahoe, NV — 2009-2015**

Lumos provided basemapping, geotechnical investigation, preliminary and final design, and construction documents for Phases 1B, 1C and 1D of this project. Ascent Environmental provided biological survey, wetland delineation, and CEQA/NEPA document. Phase 1B consisted of over 6,000 feet of trail, a 210-foot long boardwalk over Burke Creek, expanded trailhead parking, and a restroom. It was constructed in 2012. Phase 1C consisted of 6,500 feet of trail over difficult terrain around Round Mound and provides trail access to Round Hill Pines Beach. Construction was completed in 2013. Phase 1D was constructed in 2015. Lumos worked closely with a technical advisory committee composed of representatives from Douglas County, Tahoe Regional Planning Agency (TRPA), the Tahoe Transportation District, the US Forest Service, Nevada DOT, and several interest groups to develop the final design.

**Key Personnel:** Chas Macquarie, Project Manager; Greg Phillips, Survey Manager; Mitch Burns, Geotechnical Engineer

**Client Contact:** Carl Hasty, District Manager, Tahoe Transportation District, 775.589.5501

<b>Engineer’s Estimate</b>	\$1,588,440 Ph 1B \$1,520,491 Ph 1C \$593,015 Ph 1D	<b>Original Completion Date</b>	October 2012 Ph 1B October 2013 September 2015
<b>Actual Award</b>	\$1,498,835 Ph 1B \$1,456,975 Ph 1C \$521,657 Ph 1D	<b>Actual Completion Date</b>	June 2013* October 2013 September 2015
<b>Final Project Cost</b>	\$1,494,234 Ph 1B \$1,456,975 Ph 1C \$534,609 Ph 1D		

\*The project extended into the next construction season because the contractor did not complete the restroom foundation before the onset of winter.

**Nevada Stateline-to-Stateline Bikeway, North Demonstration Project Preliminary Design, Tahoe Transportation District, Lake Tahoe, NV — 2011-2013**

Lumos led the design team and provided basemapping, geotechnical investigation, and preliminary design of two alignment alternatives for three miles of the Stateline-to-Stateline trail from Sand Harbor to Ponderosa Ranch Road in Incline Village. Ascent Environmental joined the team to prepared a joint EA and NEPA document. This Tahoe Transportation District (TTD) project involved working with numerous entities, including NDOT, Nevada State Parks, Nevada State Lands, U.S. Forest Service, Incline Village GID, TRPA, and Washoe County. The project involves alternatives analysis and preferred design recommendations of trail in sensitive areas and on steep side slopes. Other design components included retaining walls, trailhead parking, and several bridge structures. The Lumos team completed the preliminary design on schedule and within budget. TTD received a Federal Lands Access Program (FLAP) Grant through the Central Federal Lands Highway Division to complete the project. This project is currently under construction.

**Key Personnel:** Chas Macquarie, Project Manager; Greg Phillips, Survey Manager; Mitch Burns, Geotechnical Engineer

**Client Contact:** Carl Hasty, District Manager, Tahoe Transportation District, 775.589.5501

<b>Lumos Start Date</b>	October 2011
<b>Lumos Finish Date</b>	March 2013

---

## Clients with Similar Projects

Below is a list of clients that Lumos has worked with on similar projects in the last five years.

- ◇ Town of Truckee
- ◇ Tahoe Transportation District
- ◇ Placer County Department of Public Works
- ◇ City of South Lake Tahoe
- ◇ California Department of General Services

## List of Subconsultants

Lumos proposes to complete the Scope of Services outlined in the Request for Proposal with our in-house staff. However, if it becomes necessary to bring additional expertise to our team regarding CEQA and NEPA, Lumos has ongoing working relationships with qualified environmental consulting firms who have specific experience with environmental compliance for multi-use bicycle/pedestrian trails and work in the Truckee area who we would bring to our team.

## Additional Comments

Below are two additional items Lumos would like to include in our proposal for consideration by the District.

### 1. Proposed Scope of Work

Based on the Scope of Services included in the RFP, Lumos has prepared an initial Proposed Scope of Work. We understand, if selected, this Scope of Work would be refined based on input from the District. We believe it is important to present this Scope to allow the District to consider our technical approach.

#### Task 1 – Existing Data Inventory & Project Kick-Off

1.1 Attend a project kick-off with the District to:

- ◇ Discuss project vision, goals, critical success factors and program requirements.
- ◇ Confirm project goals and responsibilities, establish methods for communication/ coordination and finalize the schedule.
- ◇ Establish the project timeline and schedule for key deliverables.
- ◇ Discuss identified stakeholders and other organizations/stakeholders with whom to partner.
- ◇ Obtain relevant information/data. This will include previous reports, studies, and any available aerial and/or topographic mapping, County GIS property boundaries, and land ownership.

1.2 Attend a site visit to identify possible trail alignments:

- ◇ Site reconnaissance/ site photography to identify environmental and physical issues to be considered as they may affect the trail connection, access, constructability, easements and other considerations.

1.3 Review data and summarize:

- ◇ Environmental considerations/ potential sensitive resources
- ◇ Physical considerations, highway corridor ROW, and neighborhood access
- ◇ Drainage considerations
- ◇ Scenic/aesthetic considerations
- ◇ Preparation of the Existing Conditions and Opportunities and Constraints summary

---

## **Task 2 – Stakeholder Meeting**

### 2.1 Organize Stakeholder Meeting:

- ◇ Prepare announcements/notification of stakeholder meeting
- ◇ Prepare Image Boards/ Graphic Handouts for use at the stakeholder meeting including maps showing potential trail alignments
- ◇ Present relevant existing conditions and opportunities and constraints
- ◇ Engage stakeholders to identify additional opportunities, constraints, or issues

### 2.1 Summarize Stakeholder Meeting:

- ◇ Prepare summary of meeting comments

## **Task 3 – Final Alternatives Development**

### 3.1 Prepare final conceptual alternatives:

- ◇ Potential trail alignments schematic drawing
- ◇ Design Standards for Trail Construction
- ◇ Phasing, Implementation and Funding Opportunities
- ◇ Draft summary report of alternatives, phasing, implementation and funding opportunities

### 3.2 Meeting with staff to review:

- ◇ Alternative alignments and design standards
- ◇ Draft Summary Report

### 3.3 Final Summary Report:

- ◇ Incorporate staff comments into Final Summary Report for presentation

## **Task 4 – Summary Report Presentation**

### 4.1 Public Forum Presentation

- ◇ Assist the District Staff with the preparation of announcements and notification for the public forum
- ◇ Prepare Image Boards/Graphic Handouts for use at the public forum
- ◇ Assist in the presentation of the Final Summary Report

## **2. Proposed Project Timeline**

The Lumos staff assigned to this project would be able begin work immediately upon approval of the contract with the District. One of the initial items in the Project Kick-off task is the establishment of a project timeline and schedule for key deliverables. Lumos has the ability and will dedicate the project team to meet the District's schedule while allowing for adequate time to gain stakeholder input and prepare alternatives that are feasible and constructible.

# Pricing Schedule



## Standard Fee Schedule January 1, 2018

<b>Engineering &amp; Development</b>	<b>Per Hour</b>
President	\$250
Director	225
Group Manager	210
Planning Group Manager	170
Project – Senior Project Manager	170-180
Hydrogeologist - Senior Hydrogeologist	160-165
Staff - Project - Senior Engineer	130-140-150
Staff - Project - Senior Structural Engineer	130-140-160
Landscape Architect Manager	140
Landscape Architect Designer – Landscape Architect	115-130
Project Coordinator	125
Project - Senior Project Designer	115-120
Structural - Senior Structural Designer	100-110
Assistant Planner	100
Engineering Technician I - II	90-100
Support Technician	65
<b>Construction</b>	<b>Per Hour</b>
Director	\$225
Group Manager	210
Project Manager	170
Geotechnical Engineer	190
Construction Services Engineer	155
Construction Services Supervisor	135
Geotechnician	125
Inspector - Senior Inspector	105-115
Field Technician I - II	90-95
<b>Surveying</b>	<b>Per Hour</b>
Director	\$225
Group Manager	210
Project Manager	170
Project - Senior Surveyor	130-140
Project Coordinator	125
Staff Surveyor	120
Surveying Technician I - II	95-110
Party Chief	140
Chain Person	70
<b>Administrative &amp; Other Services</b>	<b>Per Hour</b>
Administrator	\$75
Clerical	65
30x42 Color/B&W (per copy)	10/5
24x36 Mylar/Color/B&W (per copy)	20/5/3
8.5x11 Color /B&W (per copy)	0.50/0.15
Mileage (per mile)	0.70

- Fees for prevailing wage rate projects available upon request.
- Map filing, checking, consulting, and other fees paid on behalf of the client shall be billed at cost plus fifteen percent (15%).
- Overtime hours will be billed at 1.5 times standard rate where applicable.
- Survey and Field crew billing rates include standard testing equipment and truck up to 30 mile radius, after which mileage rates apply
- Fees for depositions and testimony will be billed at two (2) times the standard billing rates

**Invoices are due upon receipt and considered to be past due after 30 days.  
This fee schedule applies to services provided from January 1, 2018 until further notice.**



131 L Street  
Sacramento, CA 95814  
(510) 88-6881  
www.altaplanning.com

June 8, 2018

Henry S. Bullock  
Director of Aviation & Community Services  
Truckee Tahoe Airport District  
10356 Truckee Airport Road  
Truckee, CA 96161

**Re: Integrated Trails Network**

Dear Mr. Bullock,

Thank you for the opportunity to submit a proposal for the Truckee Airport District's Integrated Trails Network. We are always eager to work in a scenic setting like Truckee. Alta Planning + Design (Alta) has worked on several trail plans for alpine communities and is well prepared to help you deliver this project efficiently and effectively.

As the Principal-in-Charge, I will oversee the work of the Alta team and provide quality control of project deliverables. Our team will be led by project manager Brian Burchfield and supported by Jeff Knowles. Brian is an Associate Designer and licensed Landscape Architect with over nine years of experience in trail planning studies and trail and landscape design. Brian has worked on several trails projects from feasibility studies through final design and understands the necessary steps to implement a trail network. Jeff is a Senior Planning Associate with significant trail planning and policy experience. His expertise in stakeholder coordination and identifying grant funding sources will be utilized for this project. Resumes for all team members are provided in our proposal.

Thank you for allowing us to submit this proposal. Please don't hesitate to contact me at 510.788.6881 or [hughlouch@altaplanning.com](mailto:hughlouch@altaplanning.com) if you have any questions.

A handwritten signature in black ink that reads "Hugh Louch". The signature is written in a cursive, flowing style.

Hugh Louch  
Principal, Alta Planning + Design, Inc.

*This page intentionally blank*

# Truckee Tahoe Airport District

## A. NAME, SIZE, DESCRIPTION, AND HISTORY OF FIRM OR INDIVIDUAL

Alta's mission is to create active communities. Alta Planning + Design is North America's leading multi-modal transportation firm that specializes in the planning, design, and implementation of bicycle, pedestrian, park, and trail corridors and systems. Founded in 1996, Alta has more than 200 staff in 30 offices across North America. On any given day, most staff walk, bike, or take transit to work. We are committed to transforming communities, one trip at a time, one step at a time, and one street, intersection, and park at a time.

### EXPERIENCE

We have experience working in all size communities, from a few thousand to millions, from rural to mountain and desert to suburban and urbanized areas. We strive to tailor each project to the community's unique setting, history, and culture through an active public participation process. Alta staff are proud to have designed and implemented over 9,000 miles of bikeways, walkways, and trails.

### DEDICATION

Alta staff are at the forefront of the sustainable transportation movement. We are active in the Association of Pedestrian and Bicycle Professional (APBP), the Institute of Transportation Engineers, the Transportation Research Board, the Complete Streets Coalition, and have conducted national studies for the U.S. Department of Transportation. Alta is proud to be a co-author of the NACTO *Urban Bikeway Design Guide* the FHWA *Small Town and Rural Multimodal Networks Guide*.

## B. LOCATION OF MAIN OFFICE AND OFFICE WHERE WORK WILL BE ACCOMPLISHED

Work for this contract will be completed out of our Oakland and Sacramento offices.

**Main Office Address:** 711 SE Grant Ave, Portland, OR 97214

**Oakland Office:** 100 Webster St #300, Oakland, CA 94607

**Sacramento Office:** 131 L St., Sacramento, CA 95814

## C. EXECUTIVE SUMMARY

Alta's experience leading more than 500 trail projects across the country and developing many of the standards or best practices for bicycle, pedestrian and trail facilities will help us provide the Truckee Tahoe Airport District with a proven approach to getting its

trail network planned, approved, funded, and built. As a team of avid trail users, we are excited about the opportunity to work in such a beautiful area. This trail network would provide airport employees with a safe, off-road bicycle route to the airport and be an additional amenity for the Truckee community.

This plan will focus on efficiently identifying trail alignments surrounding the airport and connecting to the existing Legacy Trail. It will include a list of possible funding partners as well as local, regional, and state grant opportunities. The plan will reflect the airport's unique context specifically linking it to the surrounding community and existing trails in the area. Trail alignments and designs will respond to people and place.

The plan process will include a stakeholder outreach and participation program that accomplishes several objectives:

- Capitalize on the past work including the recent Tahoe Airport Trails Master Plan and existing support of local interest groups to gain momentum for the implementation of this integrated trails network
- Reach a broad spectrum of people to make sure they understand the project goals and methods, and that all critical issues are considered and addressed in the outcome
- Engage key stakeholders like the Northstar Community Services District, Truckee Donner Land Trust, and Truckee Donner Recreation and Park District in a forum that addresses concerns, and elicits their full participation, and support of the process and outcomes of the project
- Develop a clear understanding of user needs and interests including local residents and visitors

Since Alta's work as a firm includes planning, design, and implementation, and our senior staff bring many years of experience implementing and managing regional trail systems for public agencies, we are able to produce realistic designs and cost estimates for our studies. Our experience preparing bid documents will see that the project can be built within the anticipated budget. We will help prioritize trail segments and alignments based on specific funding opportunities and criteria and deliver a phased and flexible implementation strategy. Alta has helped communities across the country raise millions of dollars to implement their master plans and will identify relevant funding mechanisms.



## C. QUALIFICATIONS AND PREVIOUS EXPERIENCE



### Hugh Louch

*Principal-in-Charge | Oakland*



With 18 years of experience in multi-modal transportation planning and project management, Hugh has successfully managed dozens of multi-modal transportation planning projects at local, regional, and state levels, and has led research to identify best practices in transportation planning. Hugh has significant expertise in strategic planning and performance management, helping his clients focus their limited resources on the projects and programs that best reflect agency goals and objectives and provide cost effective and efficient solutions. Hugh has led workshops across the US on performance-based planning, working closely with government agency participants to define actions they can take to improve their planning processes.

#### EDUCATION

MA, Sociology, Princeton University, 1998

BA, Sociology with Honors, University of California at Santa Barbara, 1995

#### PROFESSIONAL HIGHLIGHTS

Alta Planning + Design, 2015-

Principal, Cambridge Systematics, 2001-2015

Research Associate, Public Policy Institute of California, 2000-2001

#### PROFESSIONAL ORGANIZATIONS

Member, Transportation Research Board Performance Measurement Committee

#### RELEVANT EXPERIENCE

##### DIABLO ROAD TRAIL CONCEPTUAL ALIGNMENT AND FEASIBILITY ANALYSIS, DANVILLE

Hugh is the Principal-in-Charge for this conceptual alignment and feasibility analysis for the Diablo Road Trail in Danville. The multi-use trail will be an extension of an existing half-mile long asphalt multi-use trail located along the north side of Diablo Road between Green Valley Road to the west and Calle Arroyo to the east within the Town. Alta is working with Town staff to develop a technical memorandum consisting of analysis of three conceptual trail alignment options including plan view maps, feasibility summary of each alignment option, and preliminary environmental, design and construction costs for each alignment option.

##### IRON HORSE TRAIL ACTIVE TRANSPORTATION CONNECTIONS STUDY

Hugh is the Project Manager for a visionary study of the 30-mile Iron Horse Trail corridor in Contra Costa County. Hugh is working with the County, cities, and other partners to define a future vision for the trail that increases its value to residents and businesses for commuting, shopping, recreation, and other purposes. The end result of this project will be a plan that identifies how to use the full right of way from the Iron Horse Trail and how to make connections to other trails and on-street bicycle and pedestrian networks.

##### MATADERO CREEK TRAIL FEASIBILITY STUDY, PALO ALTO

Alta provided feasibility planning, public outreach, and design services for developing a creek trail within the Midtown neighborhood of Palo Alto. Up to five on-creek and off-creek (on-street) corridors were assessed for suitability/feasibility using a multi-criteria and GIS-based analysis. Additional trail analysis included compatibility and access to future potential over/undercrossings of the Caltrain and Highway 101 corridors, which are key barriers in the City. The top two trail alternatives were further developed and presented to the community through workshops, ridealongs, an online survey, and input from a Citizen's Advisory Committee. Hugh served as the Principal-in-Charge.

##### CALIFORNIA STATE BICYCLE AND PEDESTRIAN PLAN

Alta developed California's first statewide bicycle and pedestrian plan. The plan will help fulfill Caltrans' mission to "provide a safe, sustainable, integrated and efficient transportation system to enhance California's economy and livability." Hugh led the day to day management of the plan, developing goals, objectives, performance measures, and strategies that will form the core elements of the plan.



## **Brian Burchfield, PLA** *Project Manager | Oakland*



Brian has experience with a wide variety of design projects. He has contributed expert graphics and design production services to everything from trail improvement projects to Complete Streets concepts. His recent projects have included design and drafting of construction documents, irrigation plans, planting and landscape plans, on-street bicycle and pedestrian facilities, and separated multi-use pathways. Brian has experience with all of the major design software programs including AutoCAD, ArcGIS, and Adobe Creative Suite.

### **EDUCATION**

Bachelors of  
Landscape Architecture,  
California Polytechnic  
University San Luis  
Obispo, 2008

### **PROFESSIONAL HIGHLIGHTS**

Alta Planning + Design,  
2009–

### **PROFESSIONAL REGISTRATION**

Registered Landscape  
Architect, State of  
California (#6173)  
Bay-Friendly Qualified  
Professional

### **RELEVANT EXPERIENCE**

#### **TAHOE DONNER TRAIL MASTER PLAN, TRUCKEE**

Alta worked with the Tahoe Donner Association to complete their Draft Tahoe Donner Trails Master Plan with the goal of preserving, expanding, and enhancing the trail network. With Brian serving as Supervisor, the Alta team reviewed the existing and proposed trails system; validated findings; provided precise language and graphics to fill policy, design and maintenance gaps; and offered solutions for closing and re-routing trails, and resolving erosion, wetland, riparian, and egress issues that have been tested on other projects throughout the region.

#### **COALINGA ACTIVE TRANSPORTATION PLAN**

Alta led efforts to develop a comprehensive Active Transportation Plan for the City of Coalinga, located in California's Central Valley. Brian was a part of a multi-disciplinary team of planners, engineers, and landscape architects to gather data, conduct analysis, and develop implementable recommendations specific to Coalinga's nonmotorized transportation needs. As part of the second phase of public outreach, Alta worked with the client to develop a pilot project that will enable the public to experience one of the recommended bicycle or pedestrian projects on a trial basis. Brian served as Senior Designer.

#### **BAY TRAIL DOOLITTLE DRIVE SOUTH SEGMENT, OAKLAND**

Alta led the feasibility study, preliminary design, and provided construction document support to provide a continuous trail within the shoreline area while providing an important transportation link to other East Bay Regional Park District destinations. Alta also had a role in completing the environmental permitting applications. Primary objectives of this project are to complete design of the Doolittle Drive South Segment of the San Francisco Bay Trail. Brian served as Project Manager.

#### **WEST FREMONT ROAD PATHWAY, LOS ALTOS HILLS**

Alta led the feasibility planning, design, and construction administration of 1.6 miles of a new multi-use path along a rural road in the Town of Los Altos Hills. The path is adjacent to a busy neighborhood road and will be a great amenity for young and old alike. The pathway connects to both a junior high and elementary school. The final design included retaining walls, guard rails and relocated utilities. Brian was the project manager, leading all phases of project development.

#### **CITY OF LIVE OAK COMMUNITY TRAIL**

Alta was retained by the City of Live Oak to lead the design process for a multi-use trail along former railroad right of way. Brian designed the planting and irrigation plans using City-approved drought tolerant plantings and a custom hydroseed mix consisting of wildflowers native to the area. He also assisted the city throughout the bidding and construction phases of the project.



## Jeff Knowles

### Senior Planner and Advisor | Oakland

Jeff brings nine years of experience working with multi-disciplinary teams of planners, landscape architects, and engineers, having assisted over 100 local governments and regional agencies in the planning, fundraising, design, and construction of bikeways, trails, parks and open spaces. Jeff works with communities across the country to develop pedestrian and bicycle master plans, trail and separated bikeway feasibility studies, traffic calming designs, Safe Routes to School plans, tactical urbanism demonstrations, competitive grant proposals, and much more. He has raised over \$30 million in competitive grant funding for non-motorized infrastructure projects in California, Pennsylvania, and New Jersey.

#### EDUCATION

Master of City and Regional Planning,  
University of Pennsylvania, 2009  
BA, History, Rhodes College, 2006

#### PROFESSIONAL HIGHLIGHTS

Alta Planning + Design, 2015-  
Pennsylvania Department of Conservation and Natural Resources, 2013-2015  
Pennsylvania Environmental Council, 2009-2013

#### PROFESSIONAL REGISTRATIONS

American Institute of Certified Planners #026414

#### RELEVANT EXPERIENCE

##### DIABLO ROAD TRAIL CONCEPTUAL ALIGNMENT AND FEASIBILITY ANALYSIS, DANVILLE

Alta is leading a conceptual alignment and feasibility analysis for the Diablo Road Trail in Danville. The multi-use trail will be an extension of an existing half-mile long asphalt multi-use trail located along the north side of Diablo Road between Green Valley Road to the west and Calle Arroyo to the east within the Town. Alta is working with Town staff to develop a technical memorandum consisting of analysis of three conceptual trail alignment options including plan view maps, feasibility summary of each alignment option, and preliminary environmental, design and construction costs for each alignment option. Jeff is leading this project as Project Manager.

##### MATADERO CREEK FEASIBILITY STUDY

Alta provided feasibility planning, public outreach, and design services for developing a creek trail within the Midtown neighborhood of Palo Alto, with Hugh advising as Principal-in-Charge. Up to five on-creek and off-creek (on-street) corridors were assessed for suitability/feasibility using a multi-criteria and GIS-based analysis. Additional trail analysis included compatibility and access to future potential over/undercrossings of the Caltrain and Highway 101 corridors, which are key barriers in the City.

##### OAKLAND DOOLITTLE DRIVE BAY TRAIL CALTRANS ACTIVE TRANSPORTATION PROGRAM GRANT APPLICATION

Jeff provided application support and to fund construction of the Doolittle Drive South Segment of the San Francisco Bay Trail. A large portion of the approximately half-mile new segment of trail will be built on in elevated structure above the San Leandro Bay. Other portions will be routed behind and existing boat ramp and dock as well as across a drainage channel. The East Bay Regional Parks District was successfully awarded \$4 million.

##### EL DORADO COUNTY ACTIVE TRANSPORTATION CONNECTIONS STUDY

Hugh served as Project Manager of an innovative Active Transportation Connections Study for the El Dorado County Transportation Commission (EDCTC). Hugh led Alta staff in conducting research, facilitating Technical Advisory Committee meetings, and hosting public outreach events to help EDCTC and its partners reach consensus on potential projects most likely to generate additional bicycle and pedestrian use and produce high-quality data for those projects.



## Emily Tracy, LCI

### Planner / Sacramento

Emily's passion for bicycle and pedestrian planning stems from a childhood walking and biking in her hometown of Davis, California, and a desire to enhance transportation choices for all people. Emily has worked in a wide variety of communities across California and the US, with a focus on educating residents about active transportation and Complete Streets so they can be effective champions, and improving walking and bicycling access to schools through both programmatic and infrastructure recommendations. Additionally, Emily is a resource for social media engagement, including the use of email marketing tools to bolster community participation in planning processes.

#### EDUCATION

BA, Urban Studies  
and Planning, University  
of California at San  
Diego

#### PROFESSIONAL HIGHLIGHTS

Alta Planning + Design,  
2014–  
Active Transportation  
Program Consultant,  
City of Davis, 2014  
Outreach and  
Development  
Coordinator,  
Walkable and Livable  
Communities Institute,  
2010–2014  
Project Assistant,  
Local Government  
Commission, 2007–2008

#### PROFESSIONAL REGISTRATIONS

League of American  
Bicyclists, League  
Cycling Instructor #4752

#### RELEVANT EXPERIENCE

##### LIVE OAK BICYCLE, PEDESTRIAN, AND TRAILS PLAN

Alta is assisting the City of Live Oak with the development of a comprehensive Bicycle, Pedestrian and Trails Master Plan that will be the blueprint for improving safety for walking and bicycling, as well as improving connectivity and convenience. Emily is the Lead Planner, assisting with field review of existing conditions, analysis of community needs, and development of the plan documents.

##### BELLFLOWER-PARAMOUNT BICYCLE & TRAIL MASTER PLAN

Alta is working collaboratively with the Southern California Association of Governments and the Cities of Bellflower and Paramount to develop the cities' first bicycle master plans. The two cities seek to develop a bikeway network that seamlessly connects people to each other and to surrounding communities, attractions, high schools, parks, existing transit stops, future transit stations, downtown Bellflower, Los Angeles River Bike Path and the San Gabriel River Bike Trail. Emily is assisting with team coordination, bicycle network recommendations, and plan development.

##### SAN RAMON IRON HORSE REGIONAL TRAIL OVERCROSSING STUDY

Emily co-facilitated a series of design charrettes to gather public input on two new bicycle and pedestrian overcrossings being planned on the Iron Horse Regional Trail, and developed a report summarizing this charrette process and the input received.

##### MAMMOTH LAKES WALK, BIKE, RIDE MOBILITY ACTION PLAN

Alta is developing a Multi-Modal Bicycle, Pedestrian, Transit and Parking Vision Plan to help the Town of Mammoth Lakes plan for the efficient movement of residents and visitors, maximizing mobility choices, and encouraging alternatives to personal car trips. Emily contributed to the Mobility Action Plan which consolidated and refined the ideas generated during the charrette, provided research and examples from similar projects in peer communities, and included cost estimates for diverse projects like an expanded gondola network, a car sharing program, and new community-wide snow management activities.

##### CONCORD BICYCLE, PEDESTRIAN, AND SAFE ROUTES TO TRANSIT PLAN

Alta is leading Concord's first Bicycle, Pedestrian and Safe Routes to Transit Plan. The project includes extensive outreach, capacity building and collaboration with technical and project advisory committees. As Project Planner, Emily is assisting with stakeholder engagement, analysis of community needs and existing conditions, and development of infrastructure and program recommendations.



## Ryan Booth

### Designer | Oakland

Ryan is a designer in Alta’s Oakland office. Prior to joining Alta, his work in Landscape Architecture, affordable housing, and civic engagement allowed him to develop a diverse background. Ryan holds a Bachelor’s Degree in Landscape Architecture from The Ohio State University’s Knowlton School of Architecture. Since graduating he has worked on an array of Landscape Architecture projects, widely ranging in scale and scope. Additionally, he has served multiple terms as an AmeriCorps service member, serving with Habitat for Humanity in California. Ryan has also spent time serving with Bike & Build, planning and leading service oriented cycling trips to benefits affordable housing and empowering young adults for a lifetime of service and civic engagement.

#### EDUCATION

BS, Landscape Architecture, The Ohio State University, 2009

#### PROFESSIONAL HIGHLIGHTS

- Alta Planning + Design, 2017-
- Studio 2112 Landscape Architecture, 2015-2016
- AmeriCorps, Habitat for Humanity 2012-2014
- Stephen Stimson Associates, 2011-2012
- URS, Cleveland (now AECOM), 2009-2011

#### RELEVANT EXPERIENCE

##### MISSION SAN JOSE MULTI-MODAL CORRIDOR CONCEPT, FREMONT

Alta was selected by the City of Fremont to provide on-call transportation planning services projects. Alta is developing alternative designs to calm traffic and improve the streetscape conditions on Mission Boulevard between Washington Boulevard and Pine Street in Fremont. Ryan is serving as Designer.

##### MIDDLE AVENUE PEDESTRIAN AND BICYCLE RAIL CROSSING STUDY, MENLO PARK

Menlo Park is looking to develop concepts and preliminary designs for a grade separated pedestrian and bicycle crossing of the Caltrain tracks in Menlo Park near the intersection of El Camino Real and Middle Avenue. Alta is leading the study and creating construction documents for the pedestrian and bicycle rail crossing in Menlo Park on Middle Avenue. Ryan is serving as designer.

##### ANDERSON ROAD PLANNING AND OUTREACH, CITY OF DAVIS ON-CALL

Alta was selected by the City of Davis Public Works Department to provide On-Call Engineering services for the Capital Improvement Program projects. Alta is working on a diverse set of projects for the Public Works and City Manager’s Office including planning and conceptual design for several projects in the downtown core of Davis to improve safety, health and welfare. Alta is leading outreach and a Complete Streets conceptual design for Anderson Road in Davis. Ryan is serving as designer.

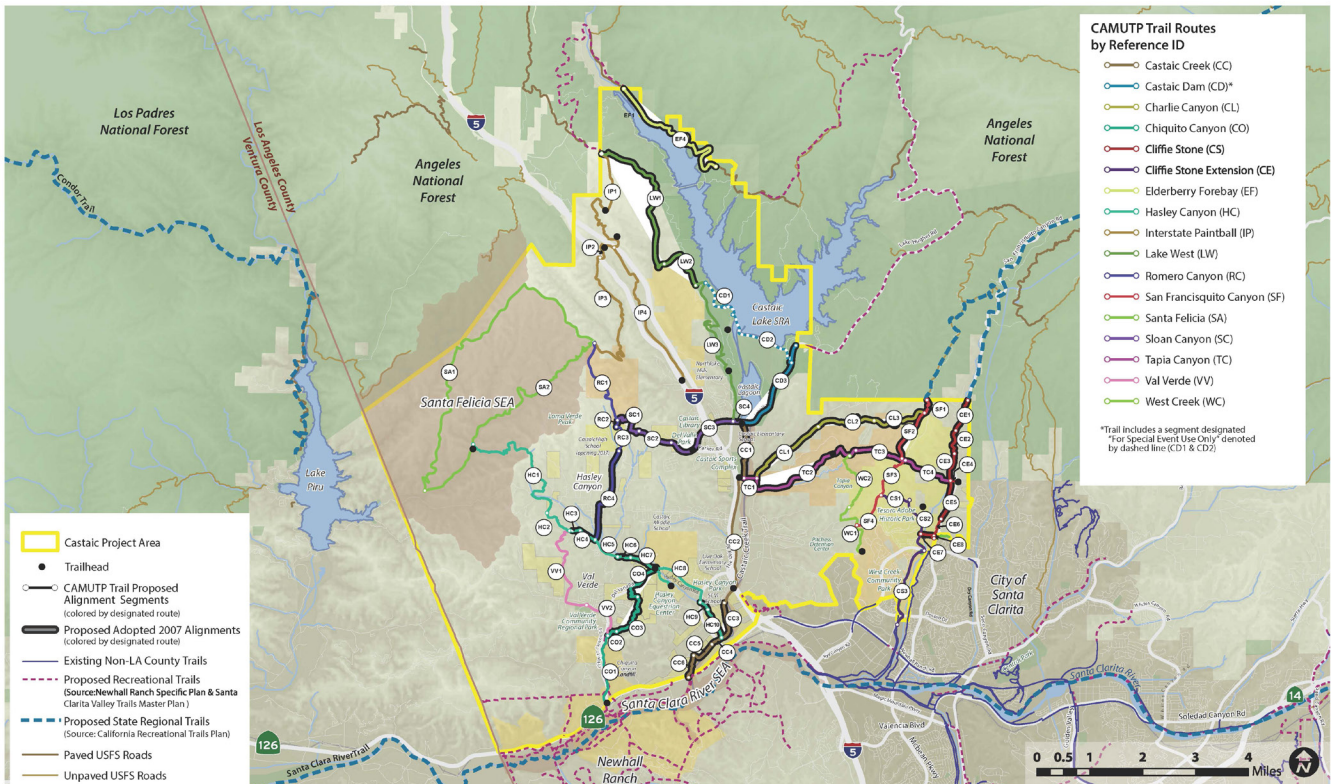
##### SHASTA WALK BIKE NETWORK FOR DOWNTOWN

Ryan served as a designer assisting the Shasta Regional Transportation Agency (SRTA) in developing a new generation bike and walk network for the region’s downtowns in support of the SRTS Board of Director’s adopted greenhouse gas (GHG) emission reduction goals. Ryan and the design team created a design that prioritizes human activity while also balancing the need for vehicular access. Ryan created plans, graphics, and presentation boards of concept designs and material pallets that design team presented for public input, and then incorporate the public comments in the design concepts.

##### BERKELEY CA BART BIKE PED ACCESS GAP

Alta is creating a conceptual design for a BART gap closure for the San Francisco Bay Area Rapid Transit District as a subconsultant. Ryan is serving as designer. He created a series of diagrams to visualize the analysis and collected data of the BART sites. These diagrams then informed the iterative concept designs that Ryan produced. Ryan then used this thorough exploration to produce several refined design alternatives for the client to consider.

## RELEVANT PROJECT EXPERIENCE IN THE LAST FIVE YEARS



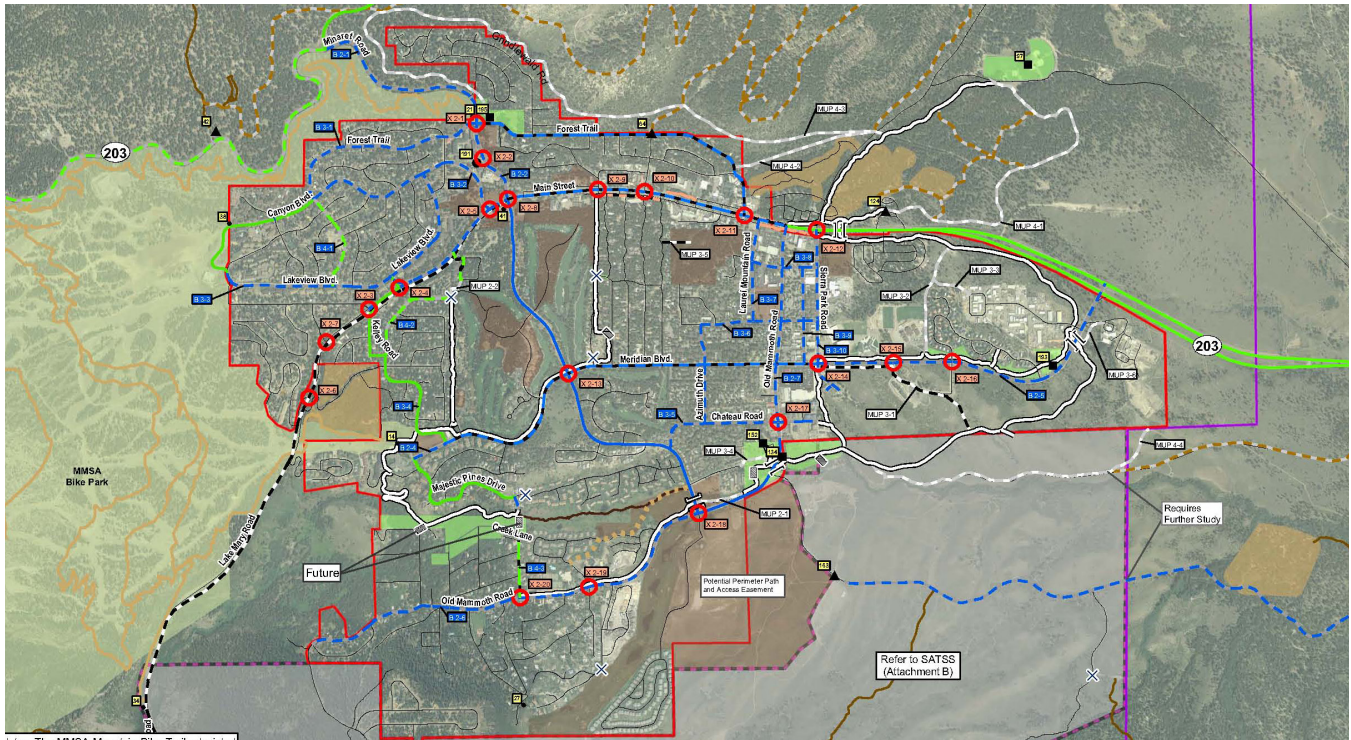
## Castaic Multi-Use Trails Master Plan

Alta prepared a multi-use trails plan, technical reports, and environmental documentation pursuant to the California Environmental Quality Act (CEQA) for the Castaic Area Multi-Use Trails Plan. The study area encompasses approximately 76 square miles in the Castaic area and will guide future trail development. The plan recommends improvements to existing trails and provide trail users and local populations with seamless transitions within the study area to trails of adjacent jurisdictions and prime destinations within and adjacent to the study area. The plan created a trail system that is compatible with adjacent land uses and environmental resources while incorporating safe and sustainable design. The overall work efforts will include a trail plan and associated CEQA documentation.

Date: 2015-2016

Client: Los Angeles County Parks & Recreation, Zachary Likins, Park Planning Assistant, (213) 351-5149, ZLikins@parks.lacounty.gov

*Delivered on time and budget*



# Mammoth Lakes Trail System Master Plan

Date: 2007-2009

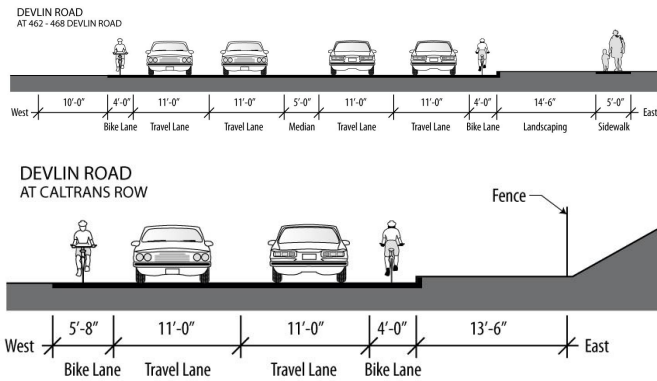
Client: Town of Mammoth Lakes,  
Dana Stroud, (760) 934.2712 x259

*Delivered on time and budget*

The Town of Mammoth Lakes is a unique four-season recreation resort community in the Eastern Sierra Nevada. Alta led a team with IMBA Trail Solutions and Beneficial Designs to develop a Trails and Public Access Master Plan. The Plan connects the human built environment with an inner loop shared use path network inside the Town's urban growth boundary, and a natural surface trails network connecting to surrounding U.S. Forest Service and other state, county and federal public lands. Alta facilitated a process that led to the creation of Mammoth Lakes Trails and Public Access (MLTPA), a strong local advocacy organization. MLTPA helped the community organize public involvement sessions called "CAMP - Concept and Master Planning" for winter and summer visions of the trails system. In 2008, the community voted by a 72% majority to approve a new .5% sales tax measure that will create a \$1 million per year funding source for trails, recreation and public access.

Alta also made edits to the Soft-Surface Trail Concepts document produced by Trail Solutions, and attended public meetings, field trips and workshops related to the recently completed Trail System Master Plan and the Sherwin Area Trails Special Study.

## ADDITIONAL ONGOING AND PAST PROJECT EXPERIENCE



## Napa Airport Area Vine Trail Study

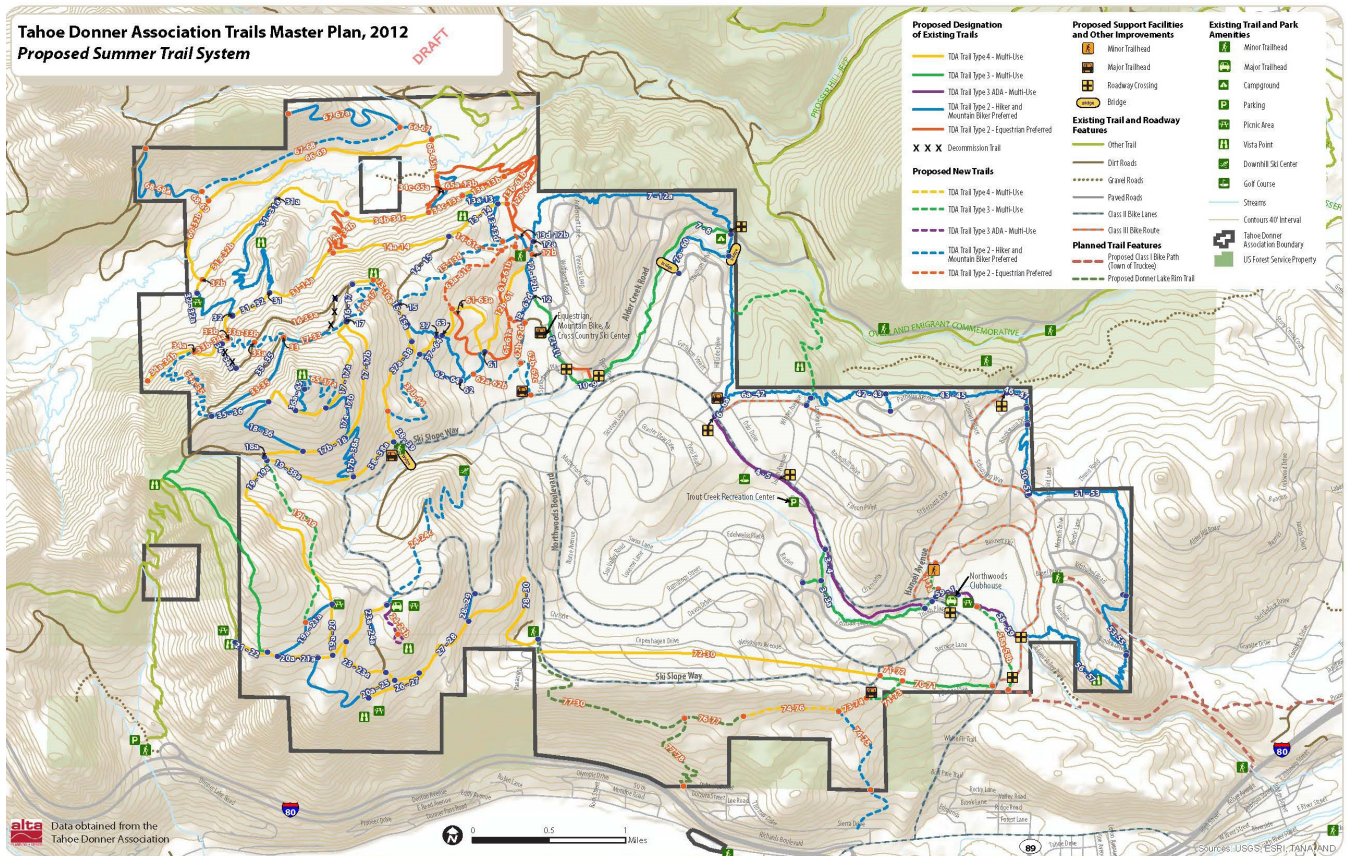
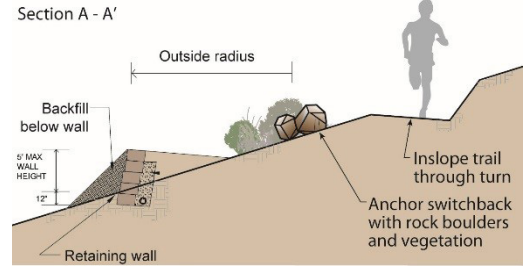
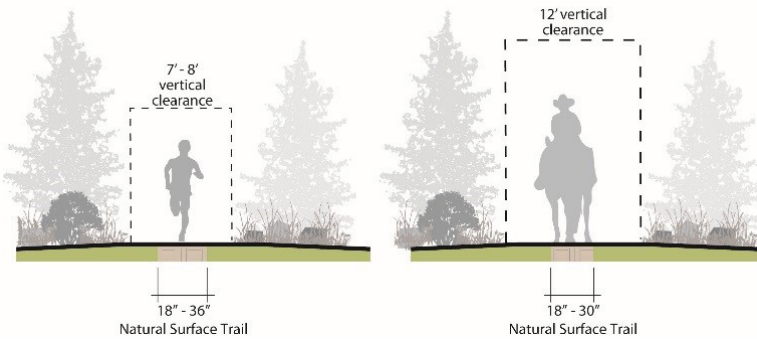
Date: 2011-2012

Client: Philip Sales, Engineering Committee, Napa Valley Vine Trail Coalition, (707) 592-1601

*Delivered on time and budget*

Alta managed this study for the Napa Valley Vine Trail Coalition. The objective of the Napa Airport Area Vine Trail Feasibility Study was to research the feasibility of implementing a Class I path to accommodate the Napa Valley Vine Trail through the Napa County Airport Area, from Green Island Road along the existing portions of Devlin Road, Soscol Ferry Road to the Napa Sanitation District facility entrance, and along Napa Valley Corporate Drive/Vista Point Drive to Anselmo Court. The path would connect with proposed paths west of the Napa Sanitation District facility entrance and along Anselmo Court. Alta determined the preferred location, general configuration, and feasibility of a path meeting Caltrans Class I bikeway standards that would tie into existing and planned bicycle and pedestrian facilities to the north and south and along the route.





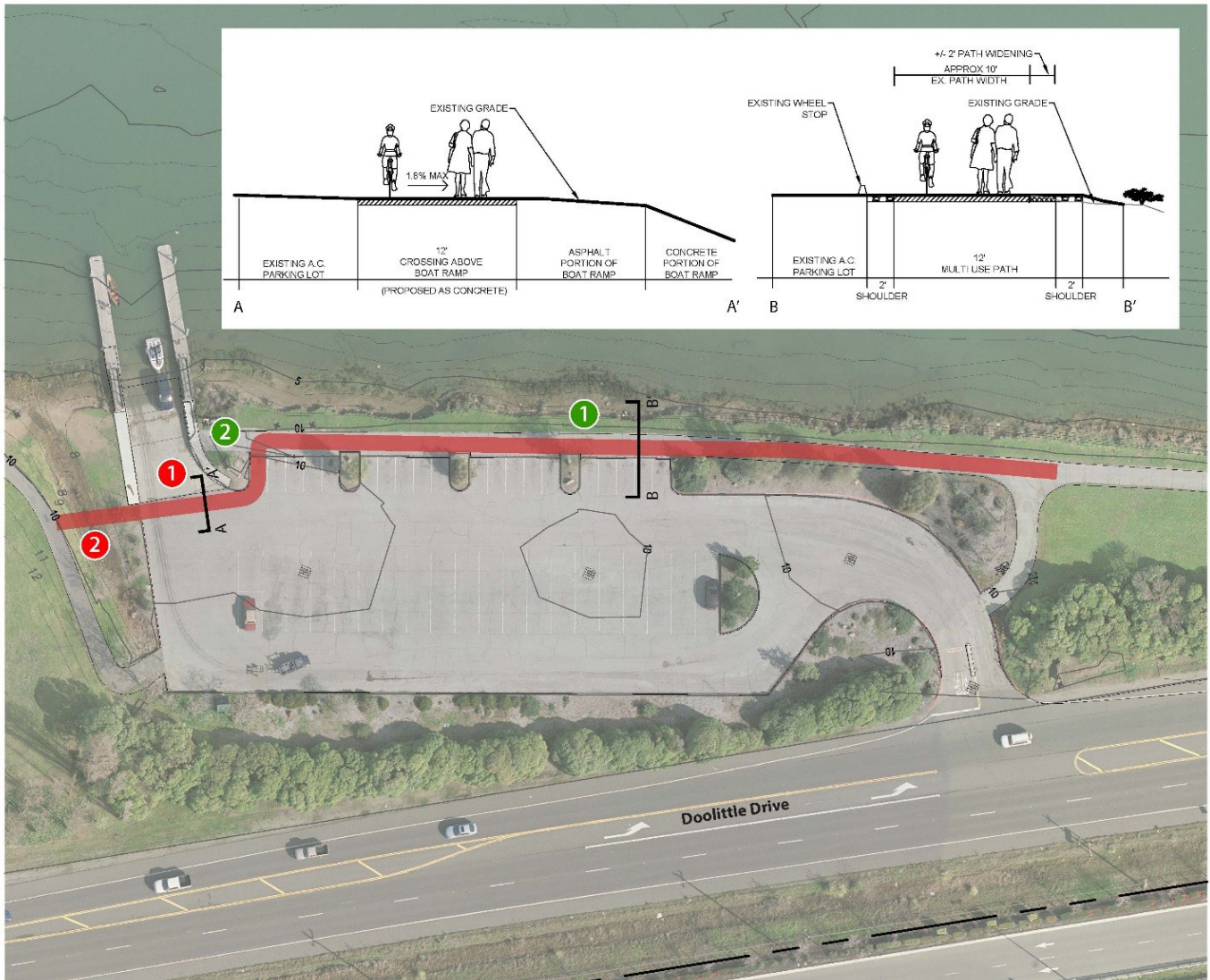
# Tahoe Donner Trails Master Plan

Alta worked with the Tahoe Donner Association to complete their Draft Tahoe Donner Trails Master Plan with the goal of preserving, expanding, and enhancing the trail network. Alta reviewed the existing and proposed trails system; validated findings; provided precise language and graphics to fill policy, design and maintenance gaps; and offered solutions for closing and re-routing trails, and resolving erosion, wetland, riparian, and egress issues that have been tested on other projects throughout the region. Through meetings and community workshops, Alta guided the community through completion of a comprehensive and effective Trail Master Plan to allow the Tahoe Donner Association to fund, maintain, and operate the trail system into the future.

Date: 2012

Client: Tahoe Donner Association,  
Annie Rosenfeld, (530) 587-9400,  
arosenfeld@tahoedonner.com

*Delivered on time and budget*



MARTIN LUTHER KING JR REGIONAL SHORELINE BOAT LAUNCH AREA  
 BAY TRAIL PATH ALIGNMENT 2 OPPORTUNITIES & CONSTRAINTS

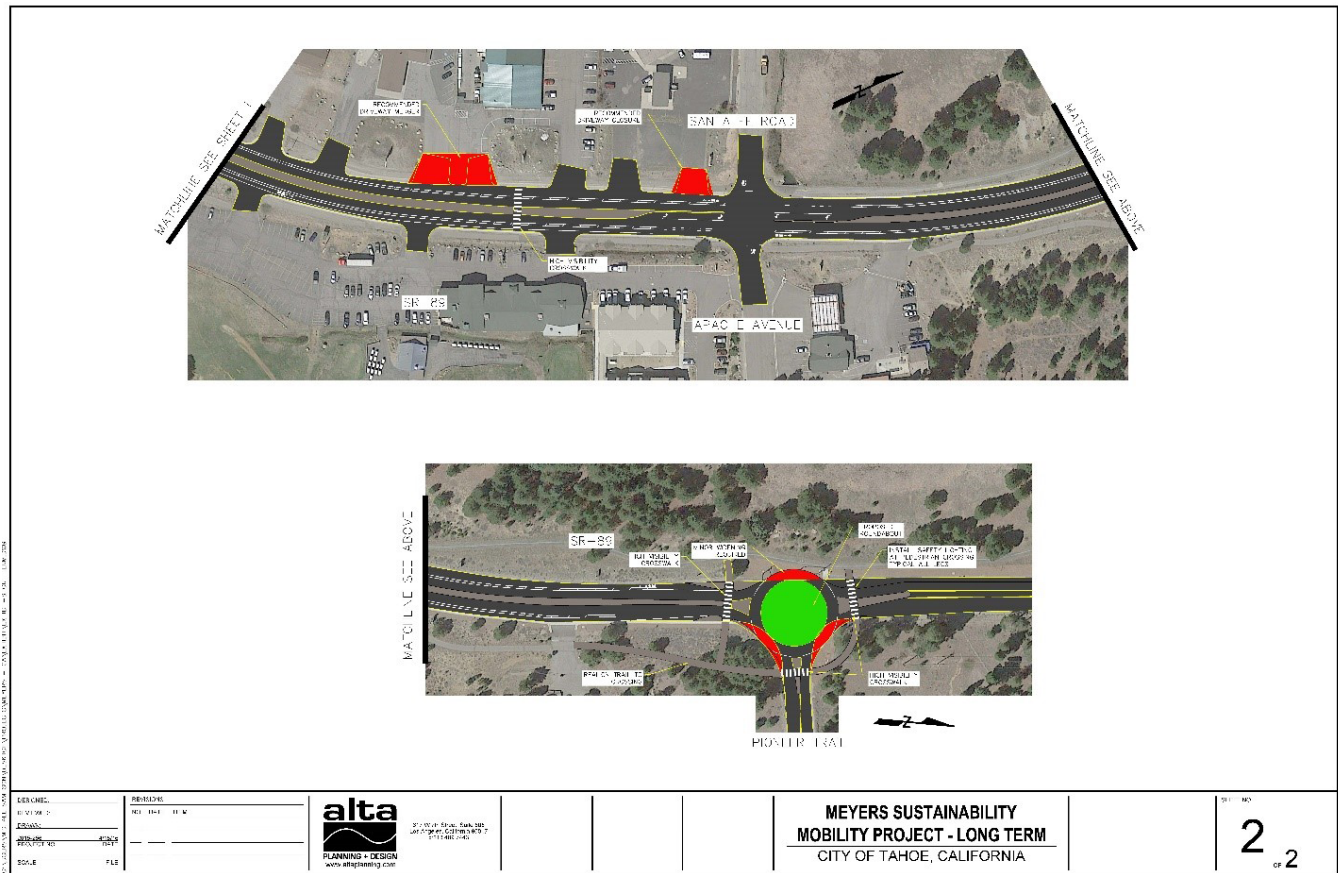
## Oakland East Bay Parks Doolittle Drive Trail

Date: 2015-ongoing

Reference: East Bay Regional Parks District, Ren Bates, Capital Program Manager, (510) 544-2302, rbates@ebparks.org

*Delivered on time and budget*

Alta led the feasibility study, preliminary design, and provided construction document support to provide a continuous trail within the shoreline area while providing an important transportation link to other East Bay Regional Park District destinations. Alta also had a role in completing the environmental permitting applications. Primary objectives of this project are to complete design of the Doolittle Drive South Segment of the San Francisco Bay Trail. A large portion of the approximately half-mile new segment of trail will be built on in elevated structure above the San Leandro Bay. Other portions will be routed behind and existing boat ramp and dock as well as across a drainage channel.



# Tahoe Meyers Sustainable Mobility Project

Alta led a Complete Street conceptual plan for Highway 50 as it passes through Meyers, CA. Alta facilitated an agency design charrette and community outreach through popup events. The conceptual design incorporates both short- and long-term infrastructure recommendations for separated multi-use pathways, high-visibility pedestrian crossings, pedestrian refuge islands, and multi-modal roundabouts where the Pioneer Trail intersects Highway 50. Alta also assisted the Tahoe Regional Planning Agency with procuring Caltrans Highway Safety Improvement Program funding.

Date: 2016

Client: Tahoe Regional Planning Agency, Morgan Beryl, Senior Transportation Planner, (775) 589-5208, mberyl@trpa.org

Contract: \$46,000

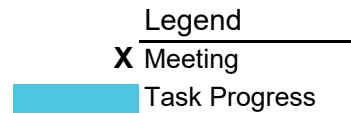
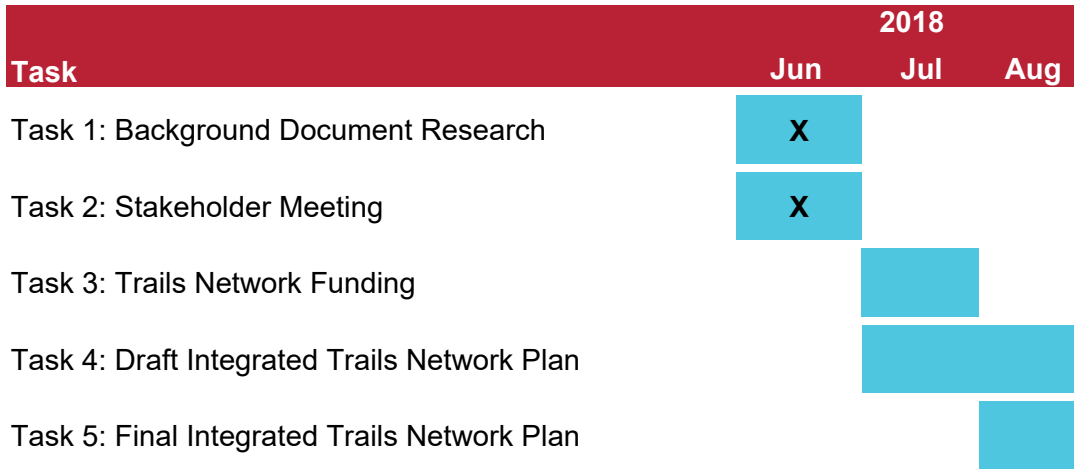
*Delivered on time and budget*

## E. SUBCONSULTANTS

Alta has all the resources and service capabilities in-house to complete this project and will not be utilizing subconsultants.

## F. ADDITIONAL COMMENTS

### Project Schedule: Truckee Integrated Trails Network



If you have questions or need further clarification on any portion of our submittal, please contact Brian Burchfield at (510) 788-6875 or [brianburchfield@alta-planning.com](mailto:brianburchfield@alta-planning.com), or Hugh Louch at (510) 788-6881 or [hughlouch@altaplanning.com](mailto:hughlouch@altaplanning.com).

## G. PRICING SCHEDULE

TASK	Alta Planning + Design					Task Hours	Total Task Fee
	<i>Principal-in-Charge</i>	<i>Project Manager</i>	<i>Senior Planning Associate</i>	<i>Senior Planner</i>	<i>Designer</i>		
	Hugh Louch	Brian Burchfield	Jeff Knowles	Emily Tracy	Ryan Booth		
<i>2018 Hourly Rate*</i>	\$272	\$137	\$175	\$98	\$98		
<b>1. Background Document Research</b>	<b>1</b>	<b>12</b>	<b>4</b>	<b>12</b>	<b>10</b>	<b>8</b>	<b>\$4,772</b>
1.1 Kick-Off Meeting		4	4			8	\$1,248
1.2 Identify Possible Project Partners		2		4			\$666
1.3 Develop Project Base-Maps	1	4			10		\$1,800
1.4 Neighboring Land Owner Coordination Memorandum		2		8			\$1,058
<b>2. Stakeholder Meeting</b>	<b>0</b>	<b>4</b>	<b>4</b>	<b>2</b>	<b>0</b>	<b>10</b>	<b>\$1,444</b>
		4	4	2		10	\$1,444
<b>3. Trails Network Funding</b>	<b>2</b>	<b>4</b>	<b>4</b>	<b>14</b>	<b>0</b>	<b>11</b>	<b>\$3,164</b>
3.1 Develop a List of Possible Funding Partners	1	2	2	6		11	\$1,484
3.2 Develop a List of Potential Grant Opportunities	1	2	2	8			\$1,680
<b>4. Draft Integrated Trails Network Plan</b>	<b>2</b>	<b>18</b>	<b>4</b>	<b>20</b>	<b>19</b>	<b>63</b>	<b>\$7,532</b>
4.1 Alternatives Analysis	1	8	2	4	12	27	\$3,286
4.2 Trails and Airports Risk Assessment		2		8	3	13	\$1,352
4.3 Develop Draft Integrated Trails Network Plan	1	8	2	8	4	23	\$2,894
<b>5. Final Integrated Trails Network Plan</b>	<b>1</b>	<b>4</b>	<b>2</b>	<b>8</b>	<b>8</b>	<b>23</b>	<b>\$2,738</b>
	1	4	2	8	8	23	\$2,738
Expenses							\$300
<b>Totals</b>	<b>6</b>	<b>42</b>	<b>18</b>	<b>56</b>	<b>37</b>	<b>115</b>	<b>\$ 19,950</b>

GENERAL NOTES:

\* Hours and staff assignments can be adjusted by the consultant as needed to implement the tasks described during the course of the project.

\* Hourly rates are for calendar year 2018, and will be adjusted if work is continued into subsequent year(s).