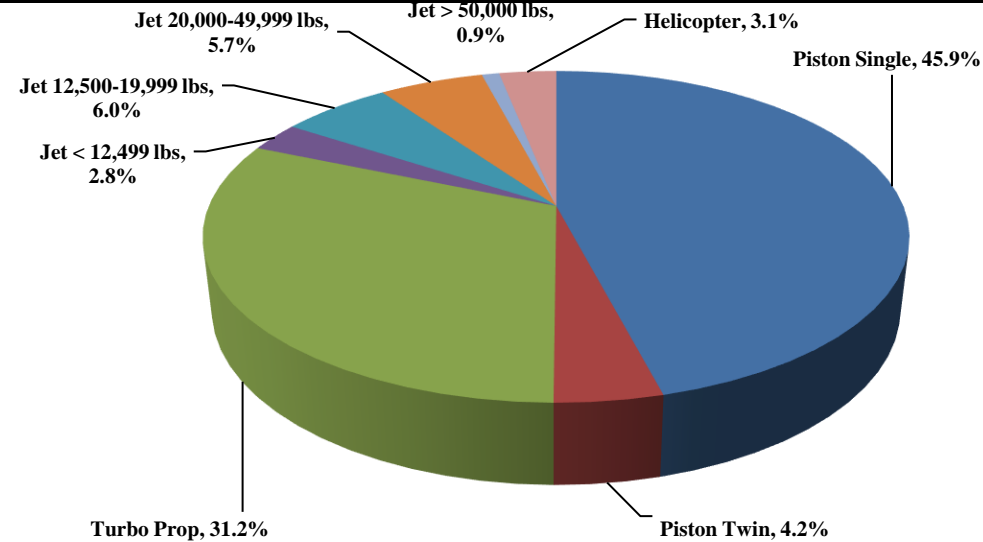




TRUCKEE TAHOE AIRPORT DISTRICT Operations and Community Comment Report as of 3/31/18

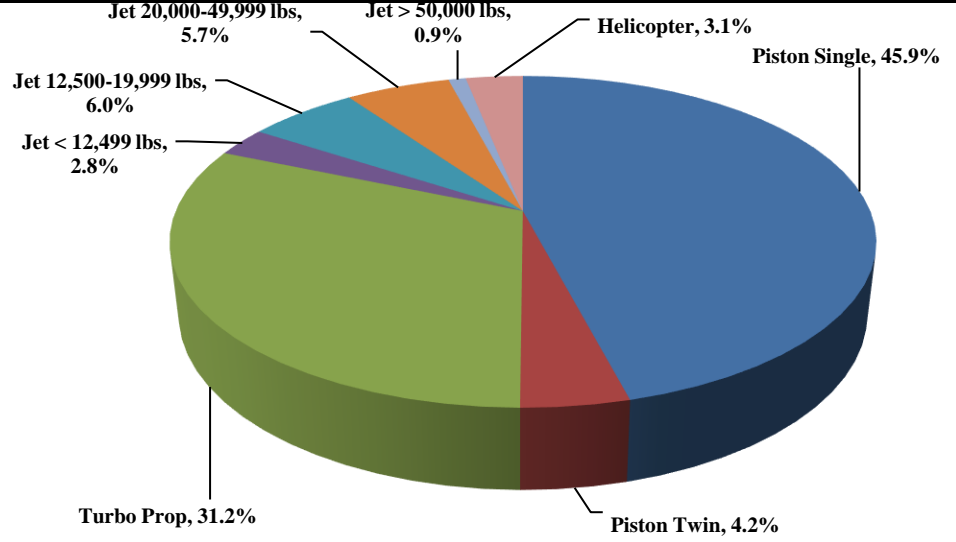


Current Quarter | Operations
January 1, 2018 - March 31, 2018



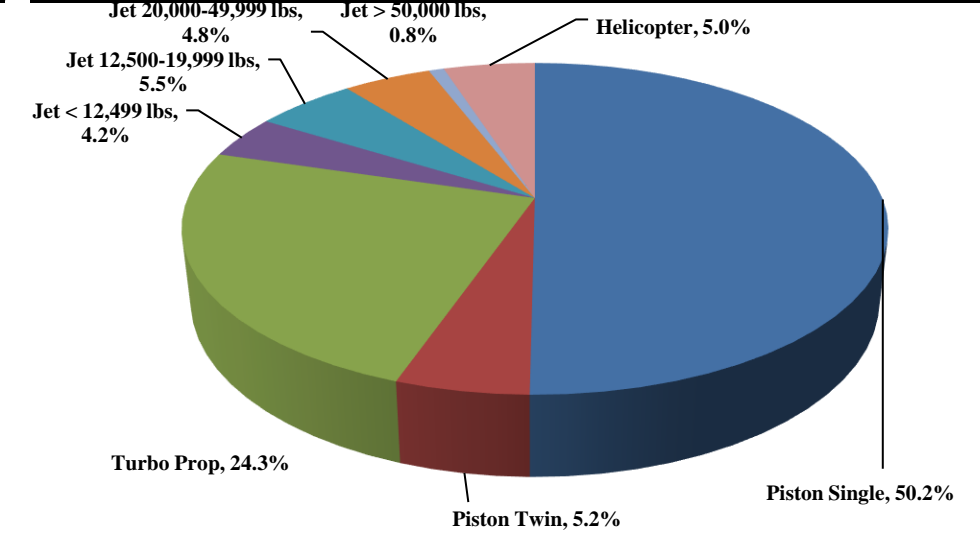
Total Powered Aircraft 5,792

Year-to-Date | Operations
January 1, 2018 - March 31, 2018



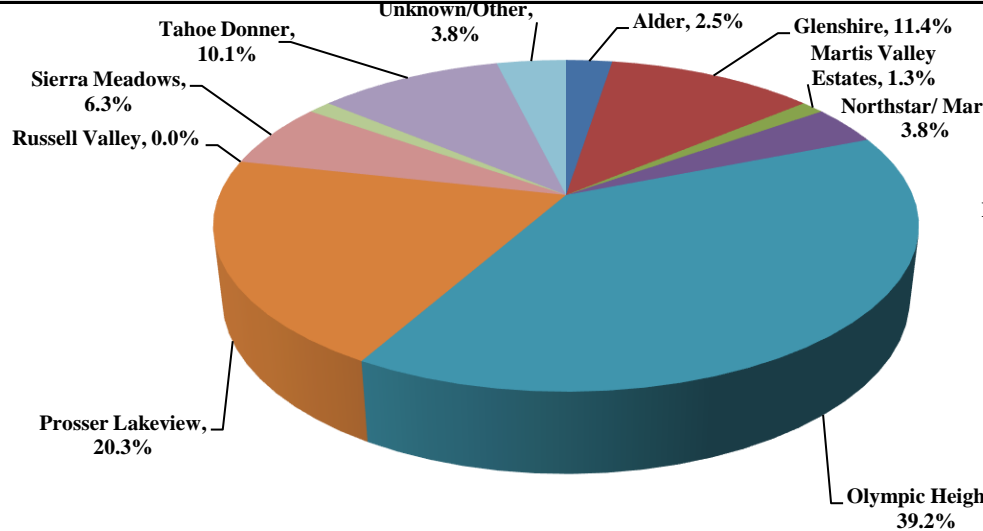
Total Powered Aircraft 5,792

Historic | Operations
January 1, 2014 - March 31, 2018



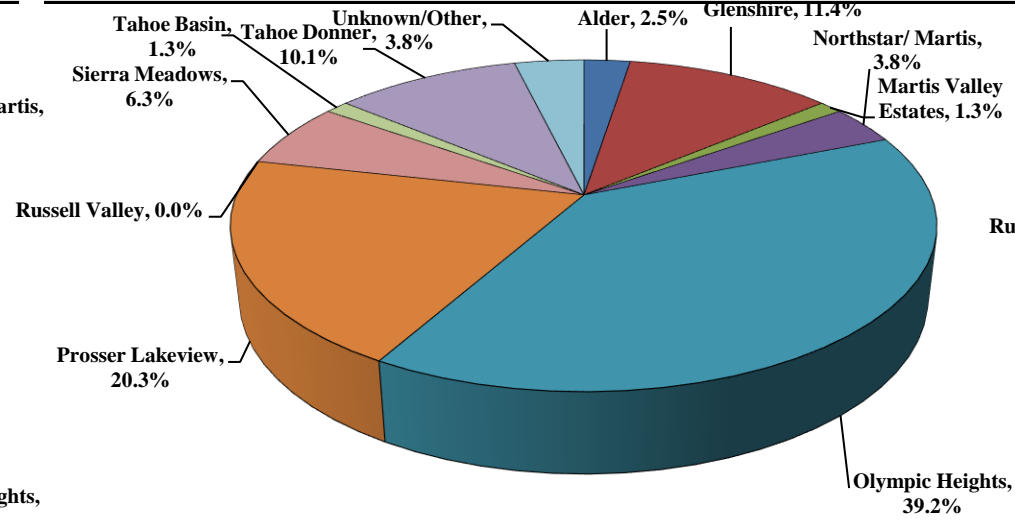
Total Powered Aircraft 101,350

Current Quarter | Comments
January 1, 2018 - March 31, 2018



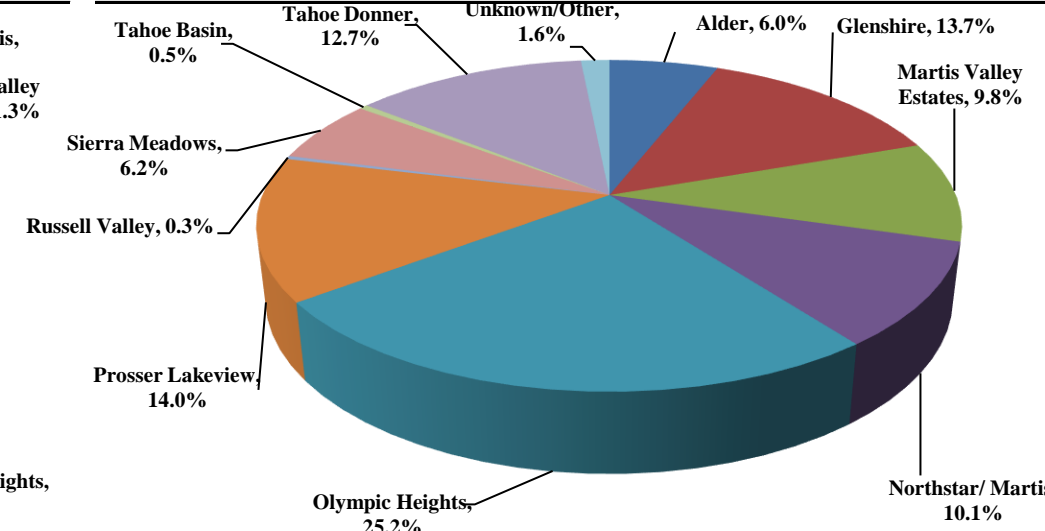
Total Comments 79
Operations / Comment 73

Year-to-Date | Comments
January 1, 2018 - March 31, 2018



Total Comments 79
Operations / Comment 73

Historic | Comments
January 1, 2014 - March 31, 2018



Total Comments 2,111
Operations / Comment 58

Notes

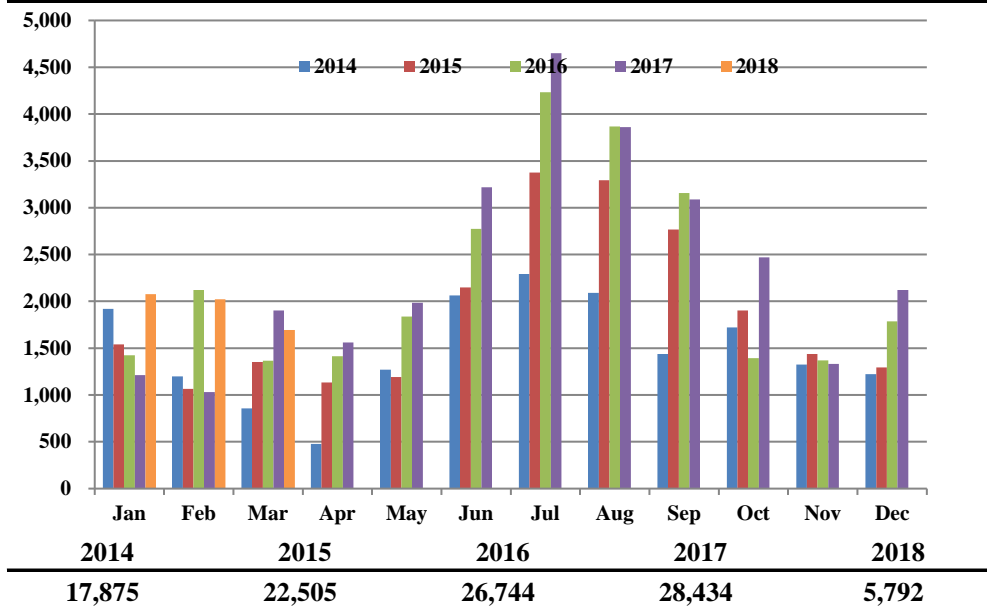
Operations graphs above use Total Powered Aircraft. Glider operations are not included.
2017 - Residential Zones changed to match minimum of 1% of total comments
2015 - Jet > 50,000 lbs category added in Q1
2014 - TTAD launched 'Report Noise' link in website



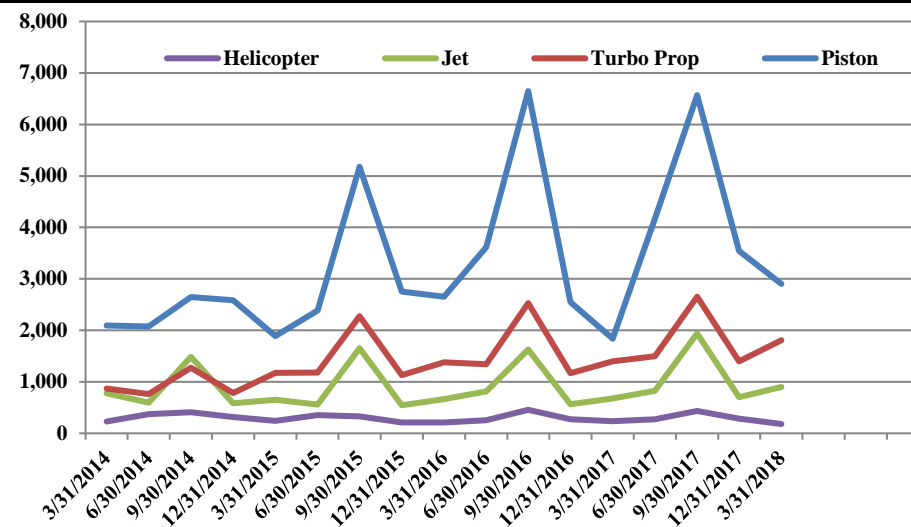
TRUCKEE TAHOE AIRPORT DISTRICT Operations and Community Comment Report as of 3/31/18



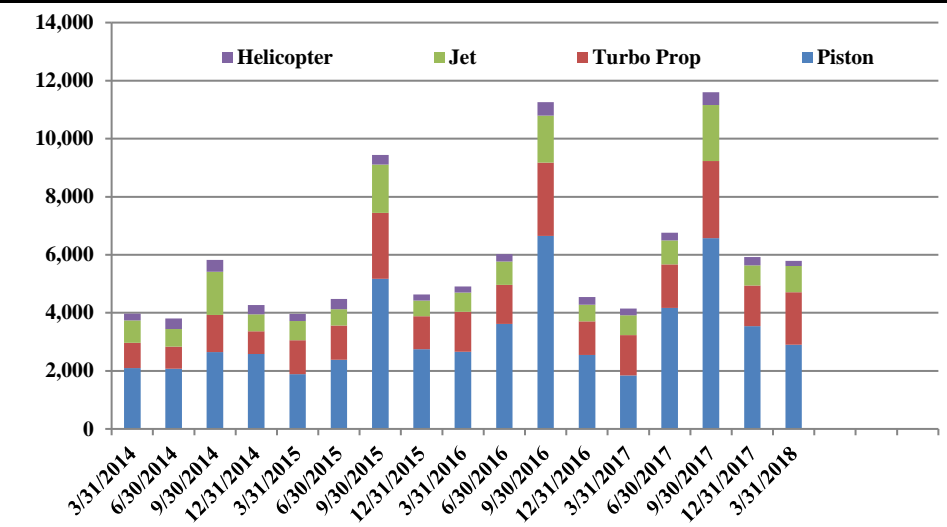
Operations | by Month by Year
January 1, 2014 - March 31, 2018



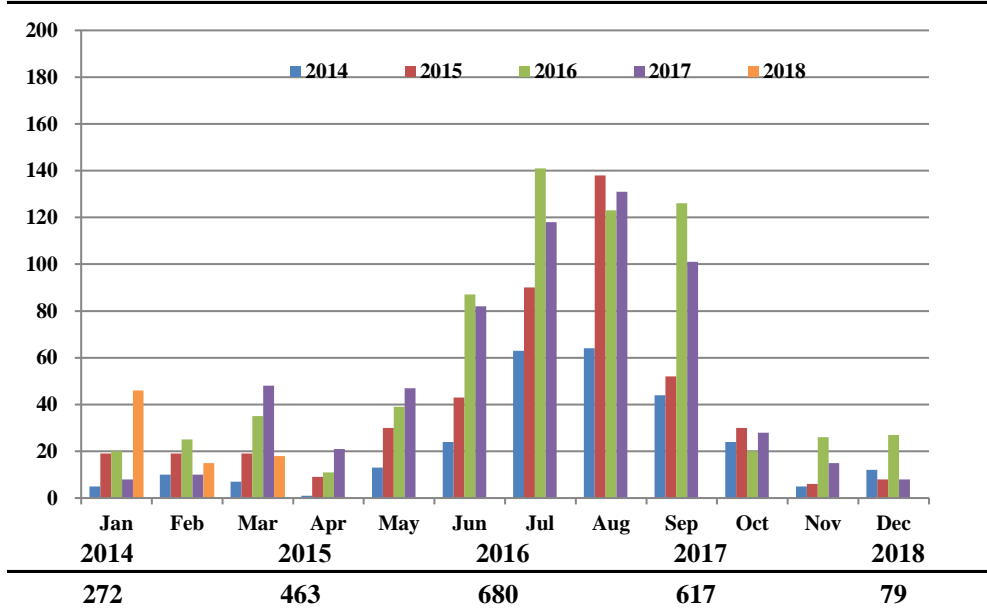
Operations | by Type by Quarter
January 1, 2014 - March 31, 2018



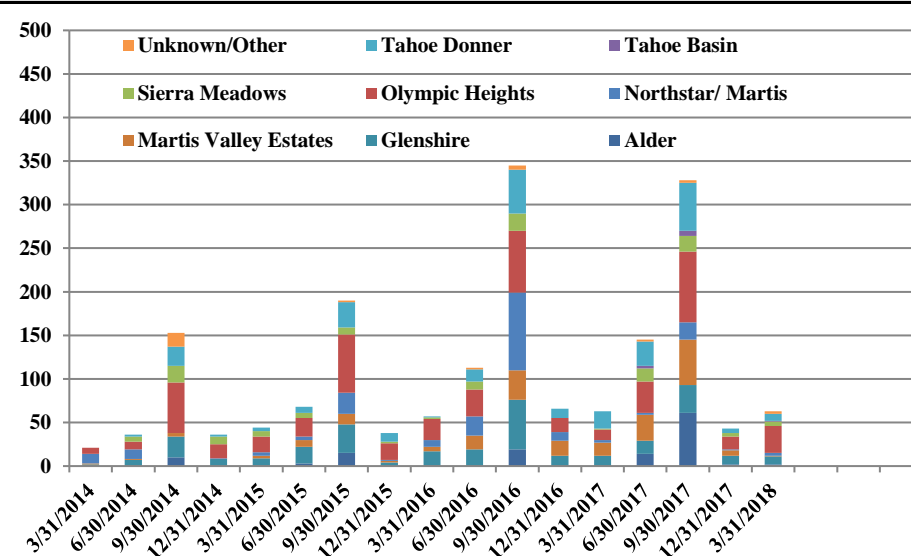
Operations | Mix by Type by Quarter
January 1, 2014 - March 31, 2018



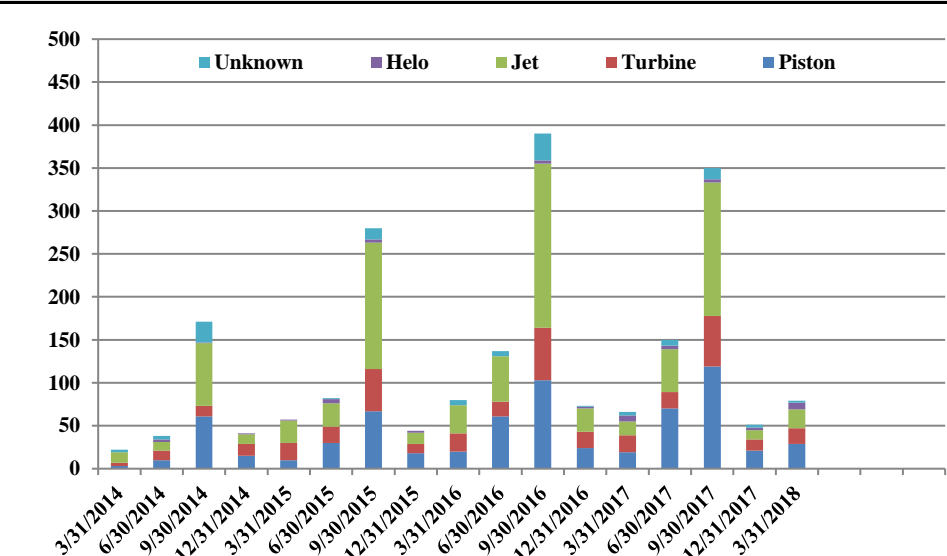
Comments | by Month by Year
January 1, 2014 - March 31, 2018



Comments | by Locale by Quarter
January 1, 2014 - March 31, 2018



Comments | by Type by Quarter
January 1, 2014 - March 31, 2018



Notes

Operations graphs above use Total Powered Aircraft. Glider operations are not included.
 2017 - Residential Zones changed to match minimum of 1% of total comments
 2015 - Jet > 50,000 lbs category added in Q1
 2014 - TTAD launched 'Report Noise' link in website



Truckee Tahoe Airport District Operations and Community Comment Report as of 3/31/18



	OPERATIONS										Year over Year				Notes
	2017				2018				difference	%	4/1/16-3/31/17	4/1/17-3/31/18	difference	%	
	Jan	Feb	Mar	Q1	Jan	Feb	Mar	Q1			4/1/16-3/31/17	4/1/17-3/31/18			
Operations Detail															
Piston Single	422	361	831	1,614	921	1,001	738	2,660	1,046	64.81%	13,541	16,024	2,483	18.34%	
Piston Twin	63	74	87	224	87	70	85	242	18	8.04%	1,109	1,163	54	4.87%	
Turbo Prop	462	367	569	1,398	657	576	576	1,809	411	29.40%	6,431	7,353	922	14.34%	
Jet < 12,499 lbs	48	25	71	144	49	73	43	165	21	14.58%	874	981	107	12.24%	
Jet 12,500-19,999 lbs	86	78	126	290	146	109	94	349	59	20.34%	1,385	1,658	273	19.71%	
Jet 20,000-49,999 lbs	40	73	119	232	131	92	108	331	99	42.67%	1,214	1,373	159	13.10%	
Jet > 50,000 lbs	4	-	5	9	26	13	16	55	46	511.11%	209	353	144	68.90%	
Helicopter	87	54	95	236	59	87	35	181	(55)	(23.31%)	1,215	1,174	(41)	(3.37%)	
Total Powered Aircraft	1,212	1,032	1,903	4,147	2,076	2,021	1,695	5,792	1,645	39.67%	25,978	30,079	4,101	15.79%	
Gliders	-	-	-	-	-	-	-	-	-	0.00%	5,780	5,146	(634)	(10.97%)	
Total Operations	1,212	1,032	1,903	4,147	2,076	2,021	1,695	5,792	1,645	39.67%	31,758	35,225	3,467	10.92%	

	COMMENTS										Year over Year				Notes
	2017				2018				difference	%	4/1/16-3/31/17	4/1/17-3/31/18	difference	%	
	Jan	Feb	Mar	Q1	Jan	Feb	Mar	Q1			4/1/16-3/31/17	4/1/17-3/31/18			
Comment Location															
Alder	-	-	-	-	1	1	-	2	2	100.00%	19	79	60	315.79%	
Glenshire	2	2	8	12	5	1	3	9	(3)	(25.00%)	100	66	(34)	(34.00%)	
Martis Valley Estates	4	2	9	15	1	-	-	1	(14)	(93.33%)	82	89	7	8.54%	
Northstar/ Martis	-	2	1	3	1	1	1	3	-	0.00%	124	26	(98)	(79.03%)	
Olympic Heights	2	-	10	12	17	7	7	31	19	158.33%	130	163	33	25.38%	
Prosser Lakeview	-	2	1	3	8	4	4	16	13	433.33%	79	44	(35)	(44.30%)	
Russell Valley	-	-	-	-	-	-	-	-	-	0.00%	-	7	7	100.00%	
Sierra Meadows	-	-	1	1	5	-	-	5	4	400.00%	30	42	12	40.00%	
Tahoe Basin	-	-	-	-	-	1	-	1	1	100.00%	-	10	10	100.00%	
Tahoe Donner	-	2	18	20	5	-	3	8	(12)	(60.00%)	95	96	1	1.05%	
Unknown/Other	-	-	-	-	3	-	-	3	3	100.00%	7	8	1	14.29%	
Total Comments	8	10	48	66	46	15	18	79	13	19.70%	666	630	(36)	(5.41%)	-
Comment Type															
Piston	-	2	17	19	16	8	5	29	10	52.63%	207	239	32	15.46%	
Turbine	3	1	16	20	10	1	7	18	(2)	(10.00%)	117	109	(8)	(6.84%)	
Jet	1	3	12	16	13	4	5	22	6	37.50%	287	238	(49)	(17.07%)	
Helo	3	3	1	7	7	1	-	8	1	14.29%	13	19	6	46.15%	
Unknown	1	1	2	4	-	1	1	2	(2)	(50.00%)	42	25	(17)	(40.48%)	
Total Comments	8	10	48	66	46	15	18	79	13	19.70%	666	630	(36)	(5.41%)	-
Operations per Comment				62.8				73.3	10.5	16.68%	47.7	55.9	8.2	17.26%	-

Truckee Tahoe Airport District Operations and Community Comment Report 2014-2018

	OPERATIONS																									
	2014					2015					2016					2017					2018					Total
	Q1	Q2	Q3	Q4	Total	Q1	Q2	Q3	Q4	Total	Q1	Q2	Q3	Q4	Total	Q1	Q2	Q3	Q4	Total	Q1	Q2	Q3	Q4	Total	
Operations Detail																										
Piston Single	1,804	1,800	2,338	2,351	8,293	1,561	1,996	4,594	2,525	10,676	2,335	3,389	6,189	2,349	14,262	1,614	3,910	6,122	3,332	14,978	2,660	-	-	-	2,660	50,869
Piston Twin	292	276	310	232	1,110	326	390	581	227	1,524	320	230	458	197	1,205	224	261	450	210	1,145	242	-	-	-	242	5,226
Turbo Prop	872	763	1,276	780	3,691	1,174	1,179	2,274	1,129	5,756	1,380	1,340	2,528	1,165	6,413	1,398	1,496	2,653	1,395	6,942	1,809	-	-	-	1,809	24,611
Jet < 12,499 lbs	364	252	468	192	1,276	215	161	415	133	924	188	198	390	142	918	144	189	451	176	960	165	-	-	-	165	4,243
Jet 12,500-19,999 lbs	192	183	426	226	1,027	227	210	622	231	1,290	236	295	596	204	1,331	290	305	738	266	1,599	349	-	-	-	349	5,596
Jet 20,000-49,999 lbs	220	163	594	168	1,145	144	167	503	156	970	182	263	542	177	1,164	232	268	564	210	1,274	331	-	-	-	331	4,884
Jet > 50,000 lbs	-	-	-	-	-	67	20	115	25	227	61	58	98	44	261	9	63	186	49	307	55	-	-	-	55	850
Helicopter	232	374	410	317	1,333	244	352	331	211	1,138	211	252	456	271	1,190	236	272	437	284	1,229	181	-	-	-	181	5,071
Total Powered Aircraft	3,976	3,811	5,822	4,266	17,875	3,958	4,475	9,435	4,637	22,505	4,913	6,025	11,257	4,549	26,744	4,147	6,764	11,601	5,922	28,434	5,792	-	-	-	5,792	101,350
Gliders	-	823	3,957	109	4,889	-	1,000	4,108	-	5,108	-	1,216	4,564	-	5,780	-	888	4,258	-	5,146	-	-	-	-	-	20,923
Total Operations	3,976	4,634	9,779	4,375	22,764	3,958	5,475	13,543	4,637	27,613	4,913	7,241	15,821	4,549	32,524	4,147	7,652	15,859	5,922	33,580	5,792	-	-	-	5,792	122,273

	COMMENTS																									
	2014					2015					2016					2017					2018					Total
	Q1	Q2	Q3	Q4	Total	Q1	Q2	Q3	Q4	Total	Q1	Q2	Q3	Q4	Total	Q1	Q2	Q3	Q4	Total	Q1	Q2	Q3	Q4	Total	
Comment Location																										
Alder	-	-	10	-	10	-	3	15	-	18	-	-	19	-	19	-	14	61	2	77	2	-	-	-	2	126
Glenshire	2	7	24	8	41	9	19	33	4	65	17	19	57	12	105	12	15	32	10	69	9	-	-	-	9	289
Martis Valley Estates	1	1	4	-	6	3	8	12	2	25	5	16	34	17	72	15	30	52	6	103	1	-	-	-	1	207
Northstar/ Martis	11	11	-	1	23	4	4	24	1	33	8	22	89	10	129	3	2	20	1	26	3	-	-	-	3	214
Olympic Heights	7	9	58	16	90	18	21	67	19	125	24	31	71	16	142	12	36	81	15	144	31	-	-	-	31	532
Prosser Lakeview	1	2	18	5	26	13	14	90	6	123	23	24	45	7	99	3	4	18	6	31	16	-	-	-	16	295
Russell Valley	-	-	-	-	-	-	-	-	-	-	-	-	-	-	-	-	1	4	2	7	-	-	-	-	-	7
Sierra Meadows	-	6	19	9	34	6	6	8	2	22	2	9	20	-	31	1	15	18	4	38	5	-	-	-	5	130
Tahoe Basin	-	-	-	-	-	-	-	-	-	-	-	-	-	-	-	-	3	6	-	9	1	-	-	-	1	10
Tahoe Donner	-	2	22	2	26	4	7	29	10	50	1	14	50	11	76	20	28	55	5	108	8	-	-	-	8	268
Unknown/Other	-	-	16	-	16	-	-	2	-	2	-	2	5	-	7	-	2	3	-	5	3	-	-	-	3	33
Total Comments	22	38	171	41	272	57	82	280	44	463	80	137	390	73	680	66	150	350	51	617	79	-	-	-	79	2,111
Comment Type																										
Piston	3	10	61	15	89	10	30	67	18	125	20	61	103	24	208	19	70	119	21	229	29	-	-	-	29	680
Turbine	4	11	12	14	41	20	19	49	11	99	21	17	61	19	118	20	19	59	13	111	18	-	-	-	18	387
Jet	12	10	73	11	106	26	27	147	13	213	33	53	191	27	304	16	50	155	11	232	22	-	-	-	22	877
Helo	-	3	1	1	5	1	5	4	2	12	-	-	4	2	6	7	4	4	3	18	8	-	-	-	8	49
Unknown	3	4	24	-	31	-	1	13	-	14	6	6	31	1	44	4	7	13	3	27	2	-	-	-	2	118
Total Comments	22	38	171	41	272	57	82	280	44	463	80	137	390	73	680	66	150	350	51	617	79	-	-	-	79	2,111
Operations per Comment	181	122	57	107	84	69	67	48	105	60	61	53	41	62	48	63	51	45	116	54	73	-	-	-	73	58