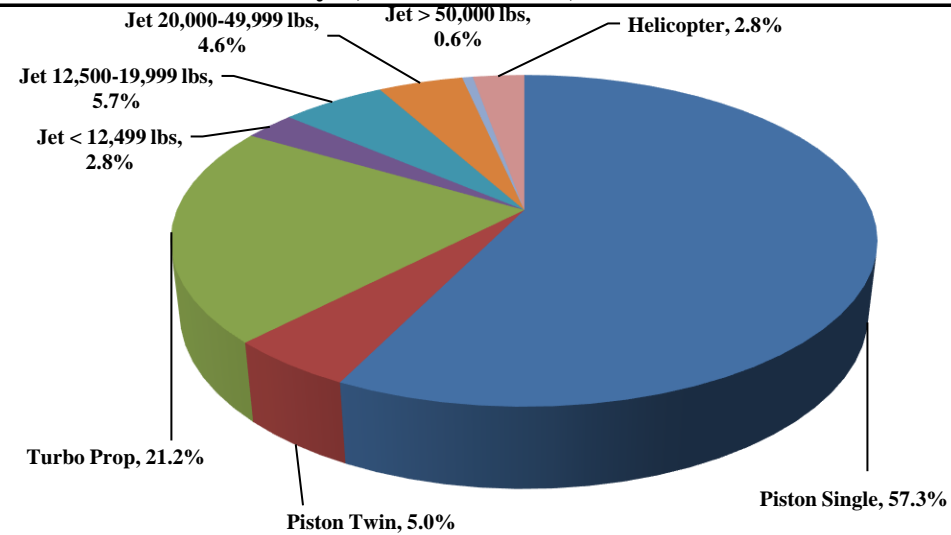




# TRUCKEE TAHOE AIRPORT DISTRICT Operations and Community Comment Report as of 6/30/18

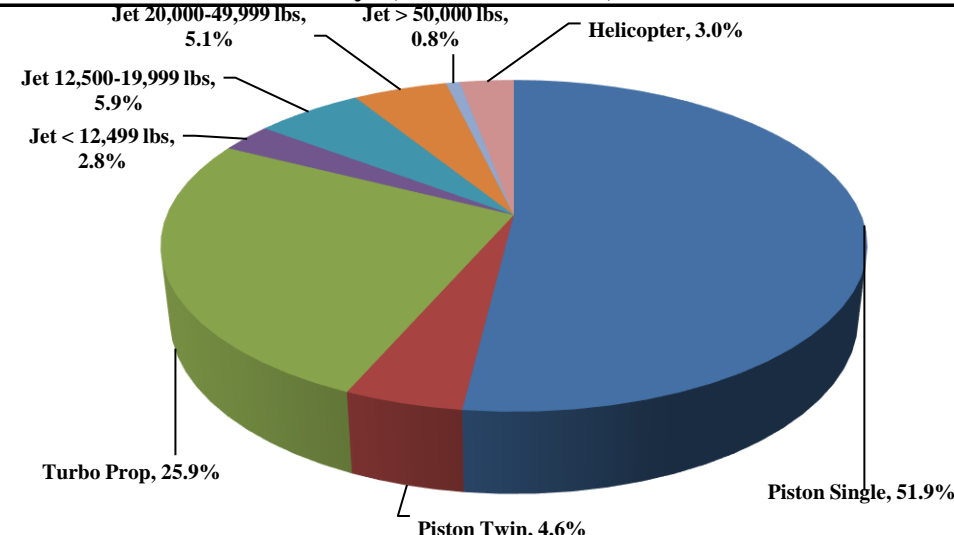


**Current Quarter | Operations**  
May 1, 2018 - June 31, 2018



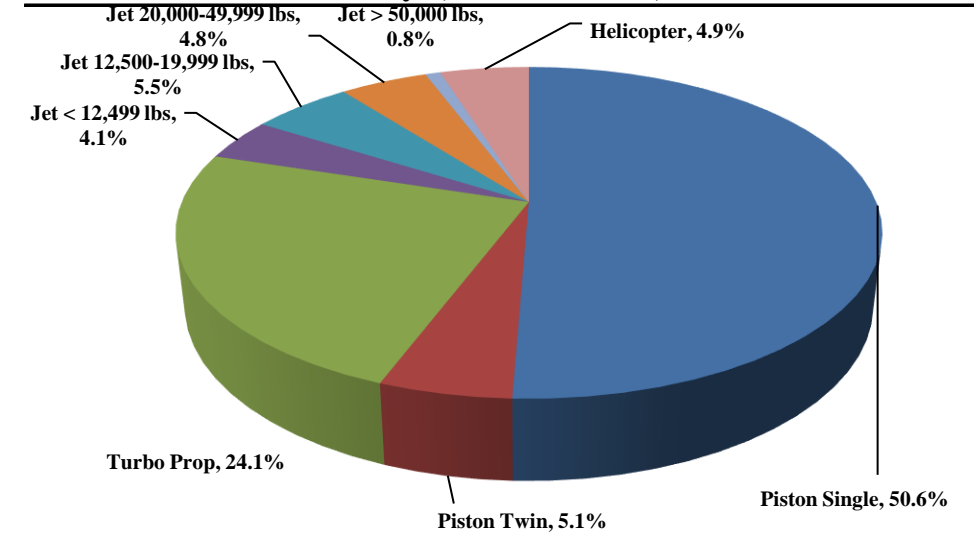
Total Powered Aircraft 6,506

**Year-to-Date | Operations**  
January 1, 2018 - June 30, 2018



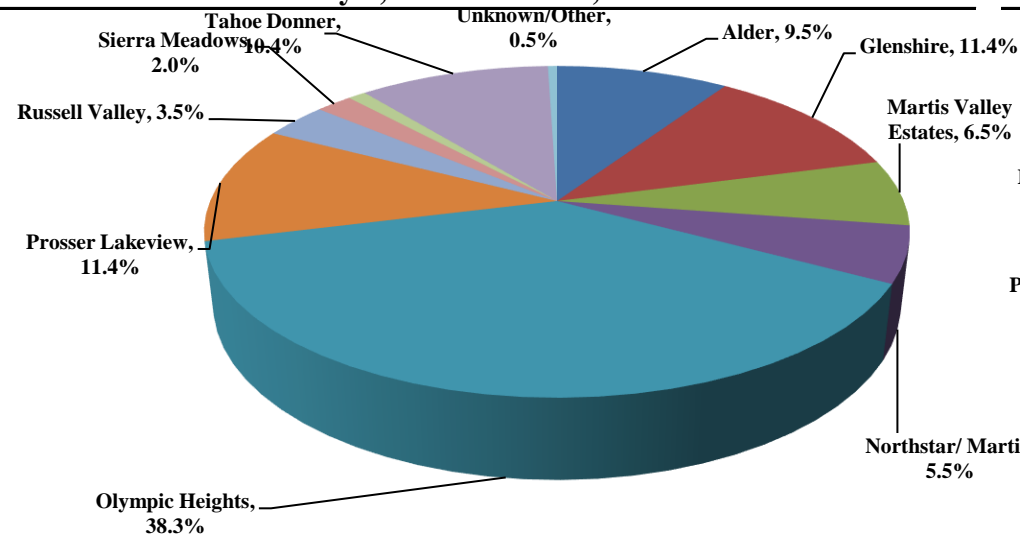
Total Powered Aircraft 12,298

**Historic | Operations**  
January 1, 2014 - June 30, 2018



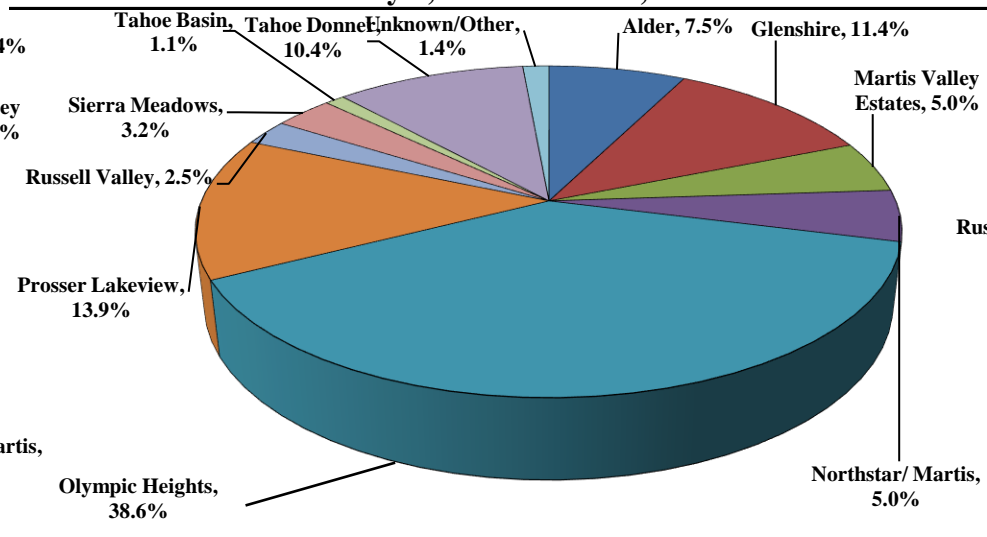
Total Powered Aircraft 107,856

**Current Quarter | Comments**  
May 1, 2018 - June 31, 2018



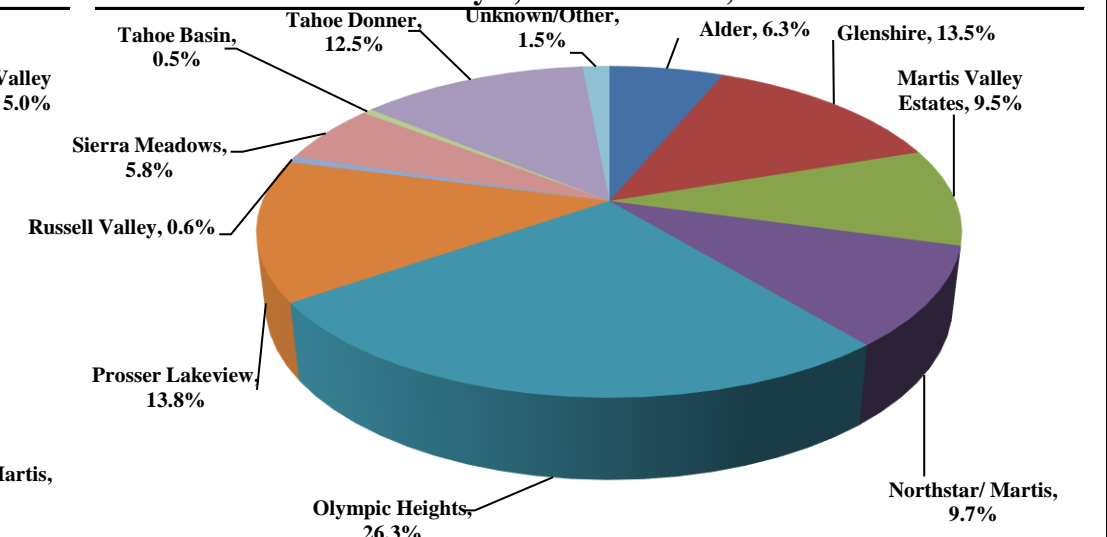
Total Comments 201  
Operations / Comment 38

**Year-to-Date | Comments**  
January 1, 2018 - June 30, 2018



Total Comments 280  
Operations / Comment 48

**Historic | Comments**  
January 1, 2014 - June 30, 2018



Total Comments 2,312  
Operations / Comment 56

**Notes**

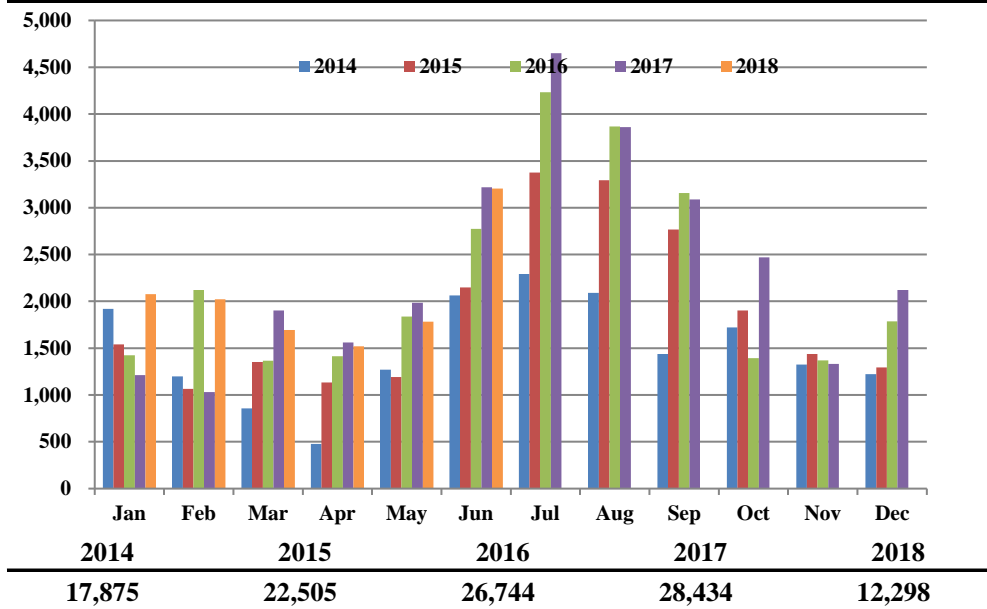
Operations graphs above use Total Powered Aircraft. Glider operations are not included. 2018 - Noise hot line & custom receipt process launched. 2017 - Residential Zones changed to match minimum of 1% of total comments. 2015 - Jet > 50,000 lbs category added in Q1. 2014 - TTAD launched 'Report Noise' link in website



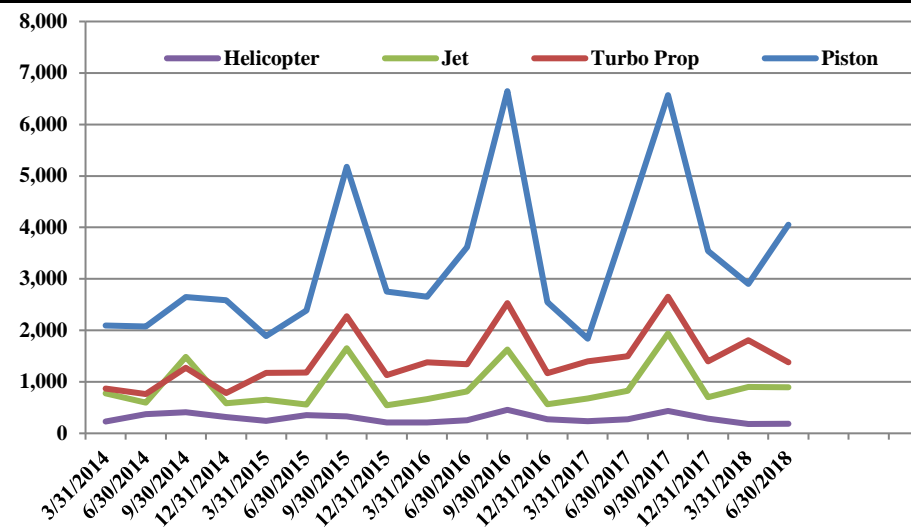
# TRUCKEE TAHOE AIRPORT DISTRICT Operations and Community Comment Report as of 6/30/18



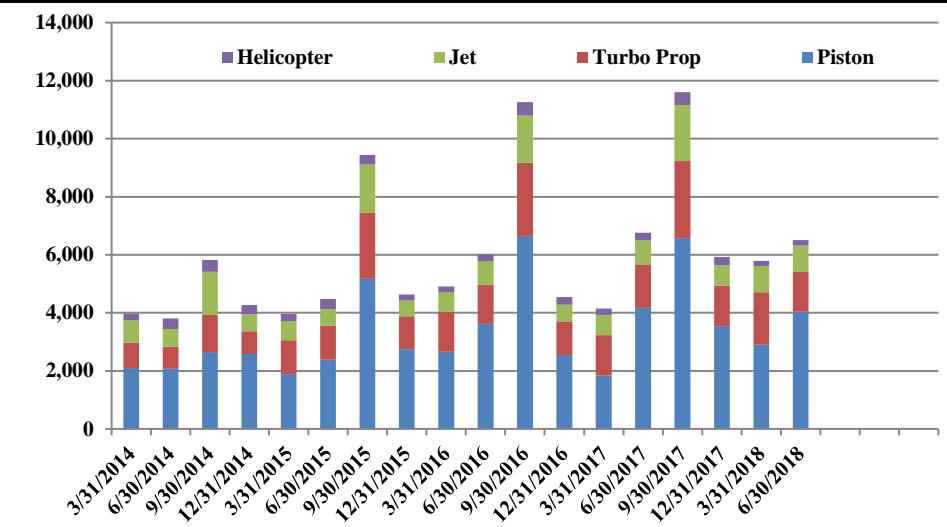
Operations | by Month by Year  
January 1, 2014 - June 30, 2018



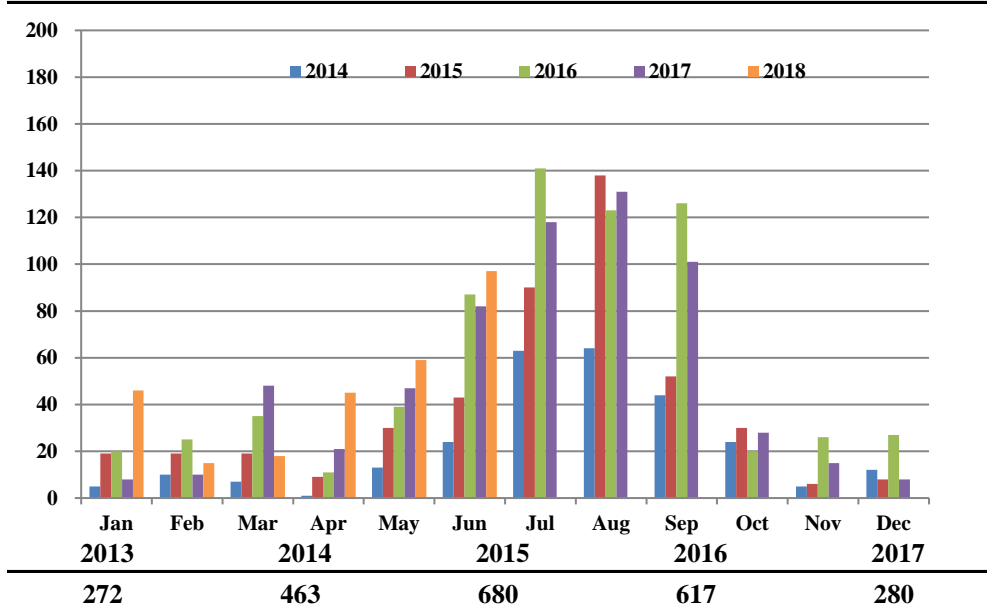
Operations | by Type by Quarter  
January 1, 2014 - June 30, 2018



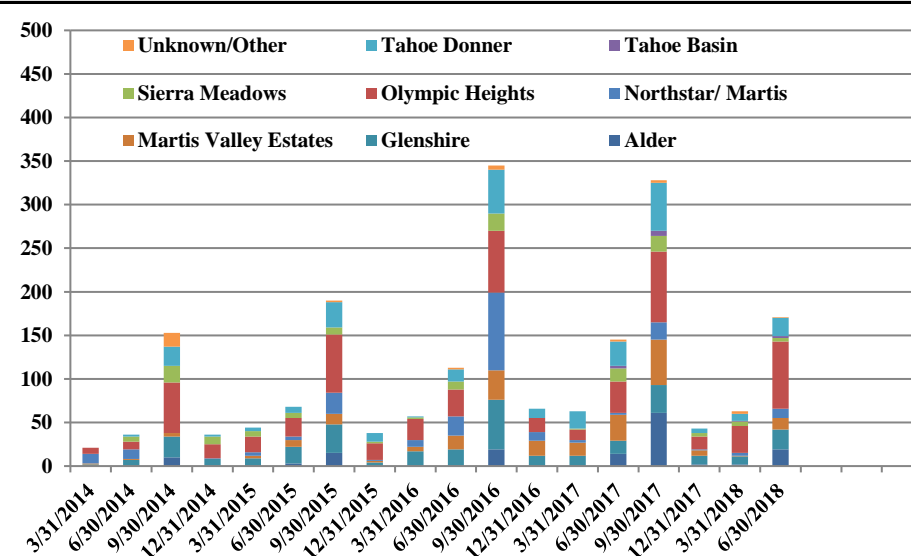
Operations | Mix by Type by Quarter  
January 1, 2014 - June 30, 2018



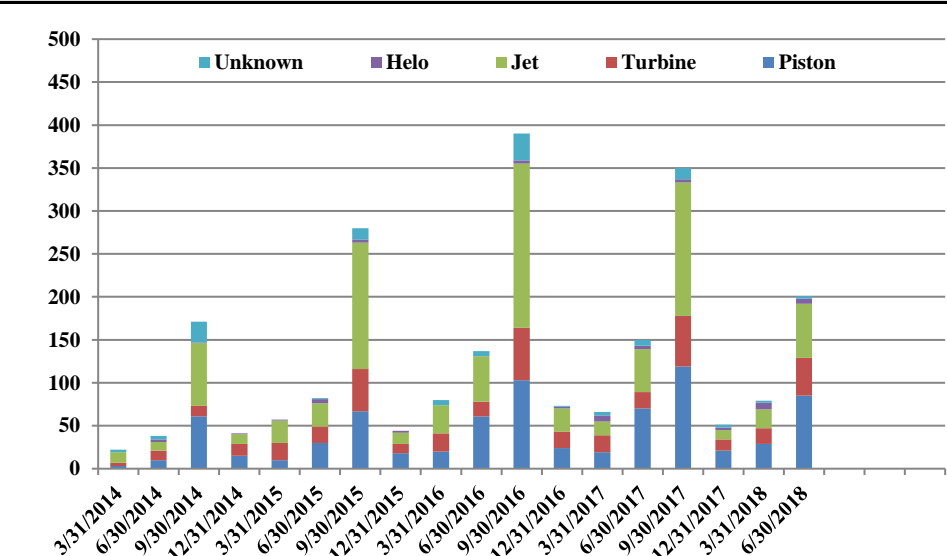
Comments | by Month by Year  
January 1, 2014 - June 30, 2018



Comments | by Locale by Quarter  
January 1, 2014 - June 30, 2018



Comments | by Type by Quarter  
January 1, 2014 - June 30, 2018



### Notes

Operations graphs above use Total Powered Aircraft. Glider operations are not included. 2018 - Noise hot line & custom receipt process launched. 2017 - Residential Zones changed to match minimum of 1% of total comments. 2015 - Jet > 50,000 lbs category added in Q1. 2014 - TTAD launched 'Report Noise' link in website



## Truckee Tahoe Airport District Operations and Community Comment Report as of 6/30/18



	OPERATIONS										Year over Year				Notes
	2017				2018				difference	%	7/1/16-6/30/17	7/1/17-6/30/18	difference	%	
	Apr	May	Jun	Q2	Apr	May	Jun	Q2			7/1/16-6/30/17	7/1/17-6/30/18			
<b>Operations Detail</b>															
Piston Single	861	1,188	1,861	3,910	855	1,089	1,783	3,727	(183)	(4.68%)	14,062	15,841	1,779	12.65%	
Piston Twin	69	62	130	261	88	69	166	323	62	23.75%	1,140	1,225	85	7.46%	
Turbo Prop	367	446	683	1,496	368	377	636	1,381	(115)	(7.69%)	6,587	7,238	651	9.88%	
Jet < 12,499 lbs	49	56	84	189	59	44	78	181	(8)	(4.23%)	865	973	108	12.49%	
Jet 12,500-19,999 lbs	67	76	162	305	67	89	215	371	66	21.64%	1,395	1,724	329	23.58%	
Jet 20,000-49,999 lbs	55	47	166	268	43	32	227	302	34	12.69%	1,219	1,407	188	15.42%	
Jet > 50,000 lbs	15	16	32	63	4	12	22	38	(25)	(39.68%)	214	328	114	53.27%	
Helicopter	79	94	99	272	35	70	78	183	(89)	(32.72%)	1,235	1,085	(150)	(12.15%)	
Total Powered Aircraft	1,562	1,985	3,217	6,764	1,519	1,782	3,205	6,506	(258)	(3.81%)	26,717	29,821	3,104	11.62%	
Gliders	-	176	712	888	-	252	920	1,172	284	31.98%	5,452	5,430	(22)	(0.40%)	
Total Operations	1,562	2,161	3,929	7,652	1,519	2,034	4,125	7,678	26	0.34%	32,169	35,251	3,082	9.58%	

	COMMENTS										Year over Year				Notes
	2017				2018				difference	%	7/1/16-6/30/17	7/1/17-6/30/18	difference	%	
	Apr	May	Jun	Q2	Apr	May	Jun	Q2			7/1/16-6/30/17	7/1/17-6/30/18			
<b>Comment Location</b>															
Alder	1	1	12	14	-	7	12	19	5	35.71%	33	84	51	154.55%	
Glenshire	-	2	13	15	7	6	10	23	8	53.33%	96	74	(22)	(22.92%)	
Martis Valley Estates	8	13	9	30	1	3	9	13	(17)	(56.67%)	96	72	(24)	(25.00%)	
Northstar/ Martis	-	2	-	2	-	2	9	11	9	450.00%	104	35	(69)	(66.35%)	
Olympic Heights	7	6	23	36	22	20	35	77	41	113.89%	135	204	69	51.11%	
Prosser Lakeview	-	2	2	4	5	9	9	23	19	475.00%	59	63	4	6.78%	
Russell Valley	-	-	1	1	1	6	-	7	6	600.00%	1	13	12	1200.00%	
Sierra Meadows	-	7	8	15	-	1	3	4	(11)	(73.33%)	36	31	(5)	(13.89%)	
Tahoe Basin	-	2	1	3	-	1	1	2	(1)	(33.33%)	3	9	6	200.00%	
Tahoe Donner	5	12	11	28	9	4	8	21	(7)	(25.00%)	109	89	(20)	(18.35%)	
Unknown/Other	-	-	2	2	-	-	1	1	(1)	(50.00%)	7	7	-	0.00%	
Total Comments	21	47	82	150	45	59	97	201	51	34.00%	679	681	2	0.29%	
<b>Comment Type</b>															
Piston	13	21	36	70	24	24	37	85	15	21.43%	216	254	38	17.59%	
Turbine	2	9	8	19	9	15	20	44	25	131.58%	119	134	15	12.61%	
Jet	5	11	34	50	11	14	38	63	13	26.00%	284	251	(33)	(11.62%)	
Helo	1	2	1	4	-	5	1	6	2	50.00%	17	21	4	23.53%	
Unknown	-	4	3	7	1	1	1	3	(4)	(57.14%)	43	21	(22)	(51.16%)	
Total Comments	21	47	82	150	45	59	97	201	51	34.00%	679	681	2	0.29%	
<b>Operations per Comment</b>															
	51.0				38.2				(12.8)	(25.12%)	47.4	51.8	4.4	9.26%	-