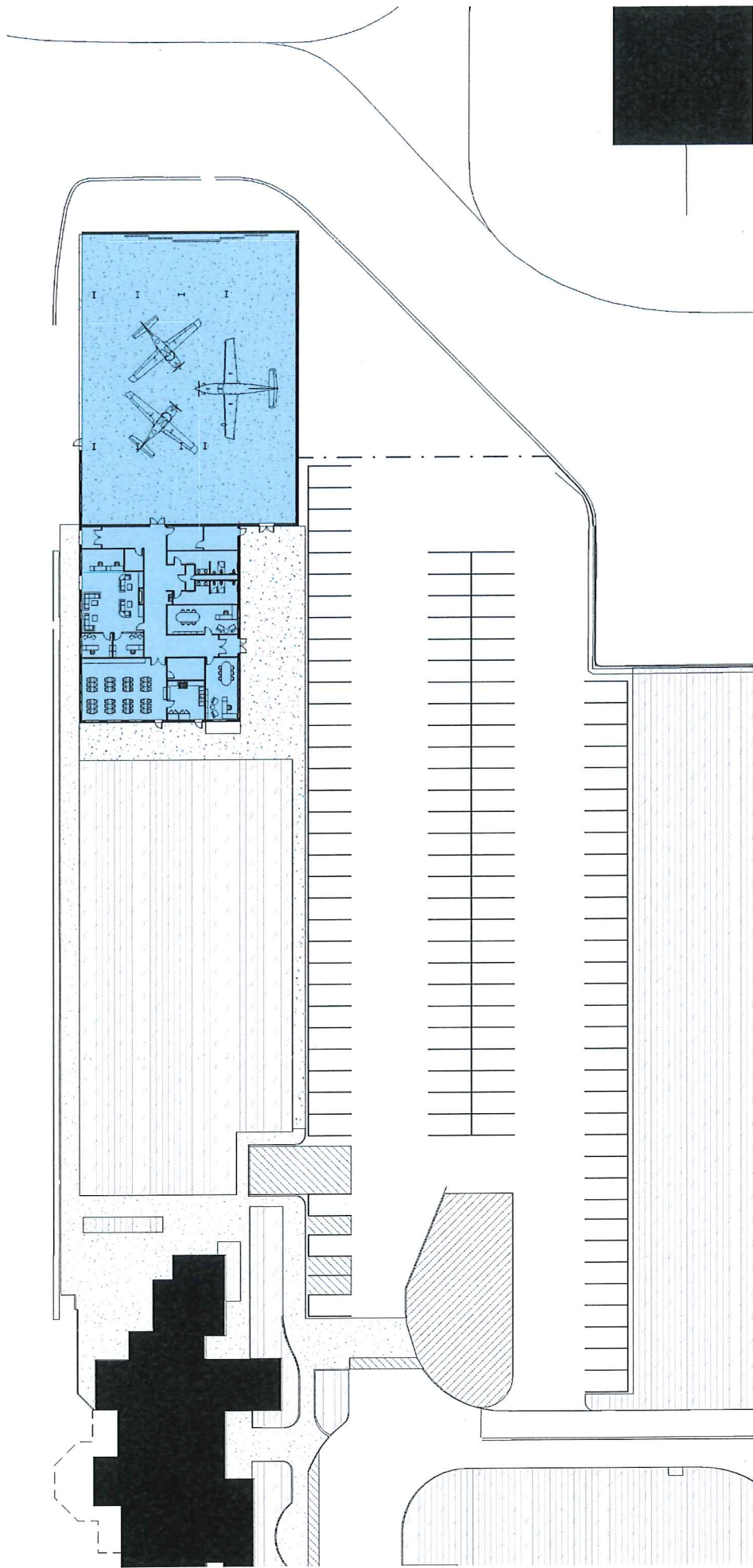
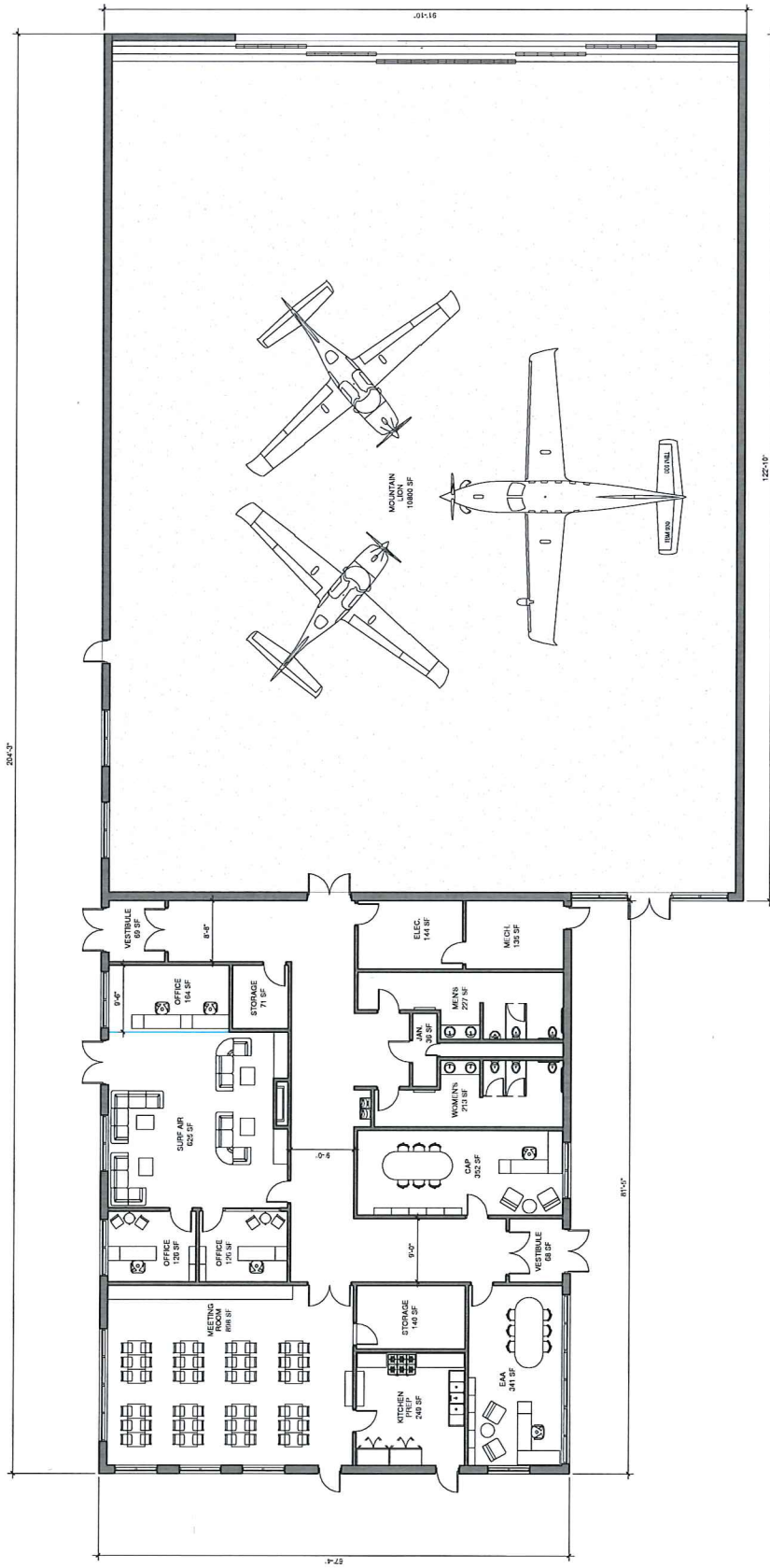


Hangar 2 Recommended Option



TRUCKEE TAHOE AIRPORT DISTRICT
HANGAR 2
SITE PLAN OPTION B
OPTION B

Mead & Hunt
A-007



FIRST FLOOR PLAN
18'-11"

TRUCKEE TAHOE AIRPORT DISTRICT
HANGAR 2
 FIRST FLOOR PLAN
 OPTION 33

The preferred option for the replacement of hangar 2 will be a 1 story pre-engineered building comprising of a hangar space and general office/meeting spaces. The overall building square footage will be 16,770 sf, subdivided as follows:

Hangar

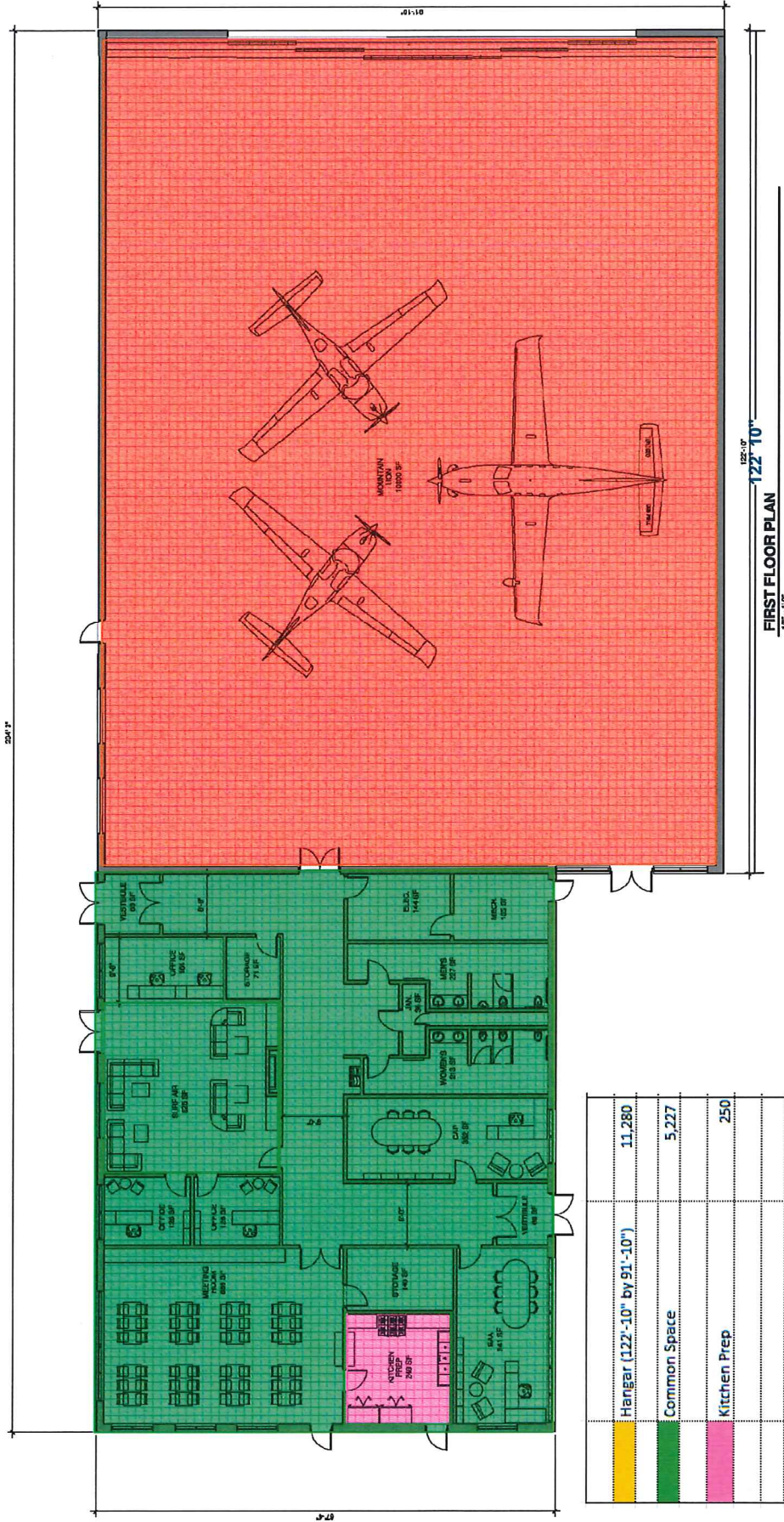
The hangar will be 11,280 sf, with a sliding door facing the east. The hangar door height will be approximately 27'-0". The hangar will be provided as a shell space for future tenant buildout.

Offices

The office space will be a combination of airport tenants and building support spaces. It will be 5,490sf. The office are will include the following spaces and approximate square footages:

Meeting Room	900sf
Meeting Storage	150sf
Kitchen/Prep Space	250sf
EAA space	350sf
CAP space	350sf
Charter Tenant	1000sf

Building support spaces will include restrooms, mechanical, electrical, communication and storage spaces.



Hangar (122'-10" by 91'-10")	11,280
Common Space	5,227
Kitchen Prep	250
Total	16,757

TRUCKEE TAHOE AIRPORT DISTRICT
HANGAR 2
 FIRST FLOOR PLAN - OPTION 3C
 07/25/18

Mead & Hunt
 A-101