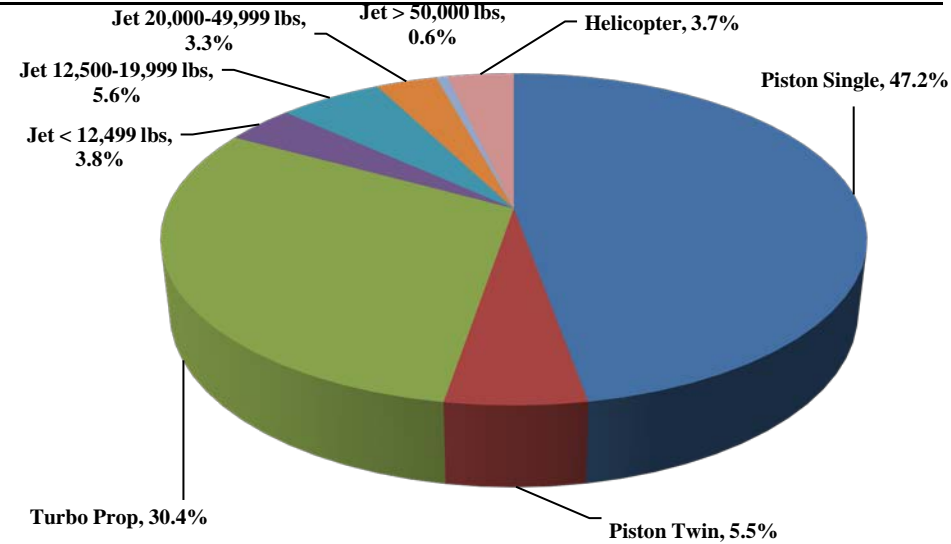




# TRUCKEE TAHOE AIRPORT DISTRICT Operations and Community Comment Report as of 3/31/19

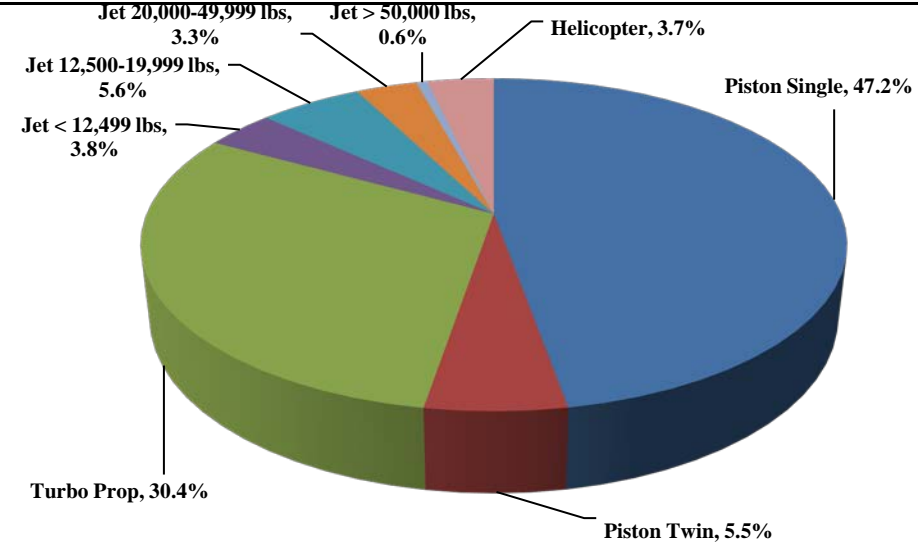


**Current Quarter | Operations**  
January 1, 2019 - March 31, 2019



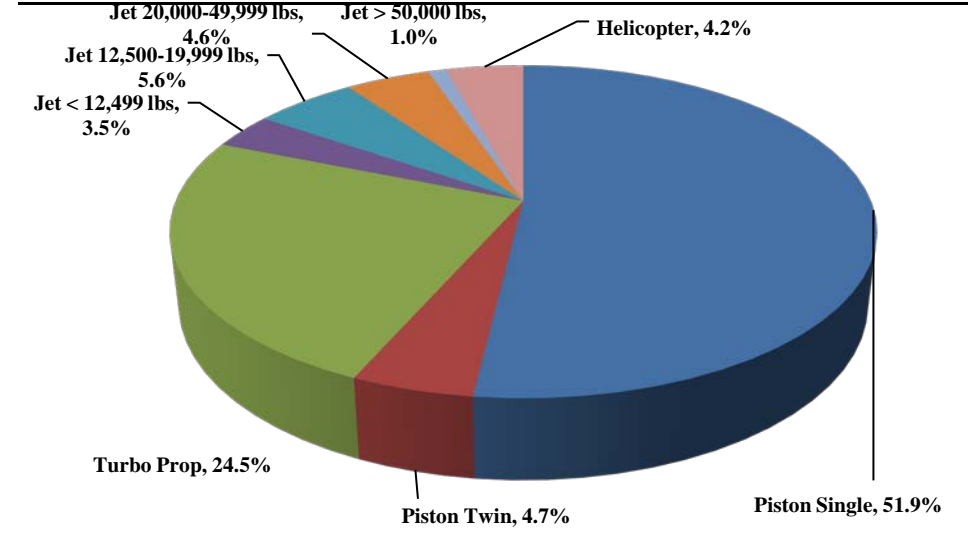
Total Powered Aircraft 4,931

**Year-to-Date | Operations**  
January 1, 2019 - March 31, 2019



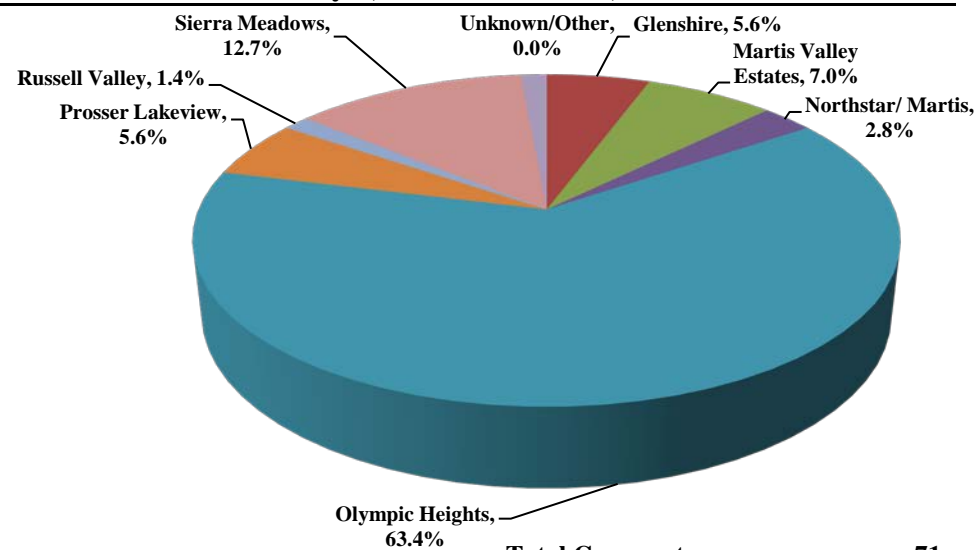
Total Powered Aircraft 4,931

**Historic | Operations**  
January 1, 2015 - March 31, 2019



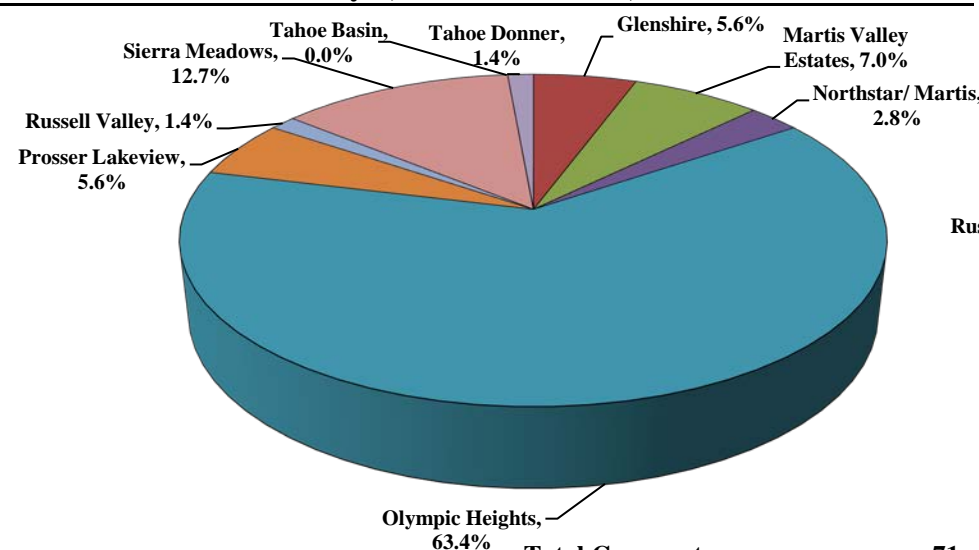
Total Powered Aircraft 112,129

**Current Quarter | Comments**  
January 1, 2019 - March 31, 2019



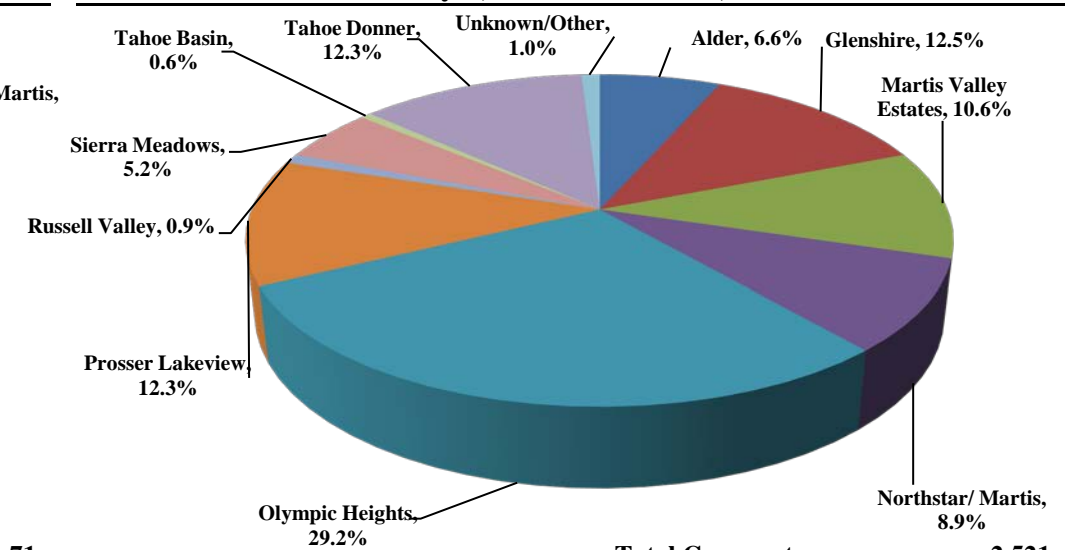
Total Comments 71  
Operations / Comment 69

**Year-to-Date | Comments**  
January 1, 2019 - March 31, 2019



Total Comments 71  
Operations / Comment 69

**Historic | Comments**  
January 1, 2015 - March 31, 2019



Total Comments 2,521  
Operations / Comment 53

**Notes**

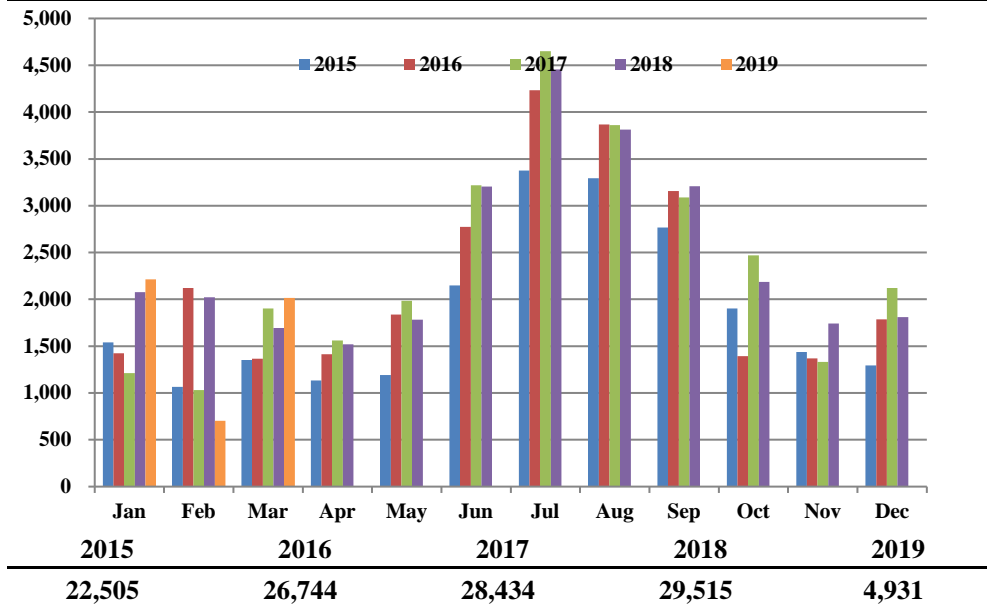
Operations graphs above use Total Powered Aircraft. Glider operations are not included.  
**2018** - Launched Community Hotline & Plane Noise with Smart Receipt  
**2017** - Residential Zones changed to match minimum of 1% of total comments  
**2015** - Jet > 50,000 lbs category added in Q1. **2014** - TTAD launched 'Report Noise' link in website



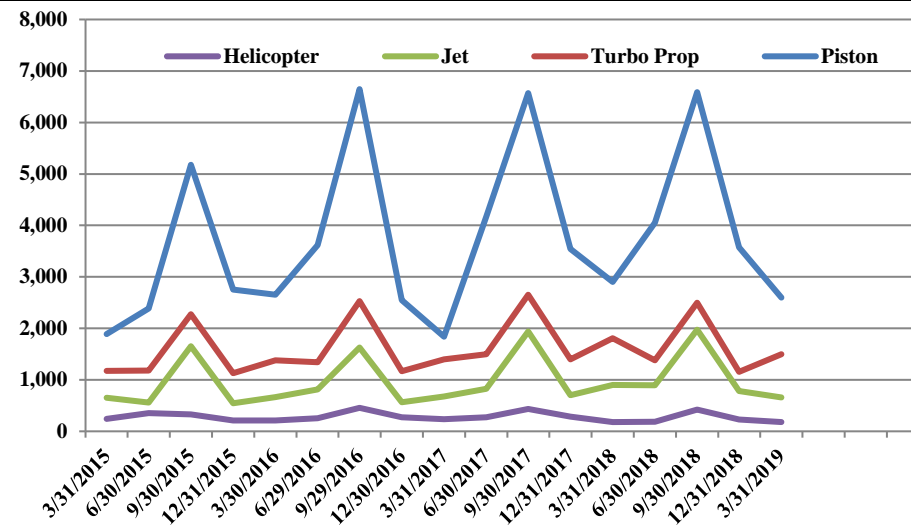
# TRUCKEE TAHOE AIRPORT DISTRICT Operations and Community Comment Report as of 3/31/19



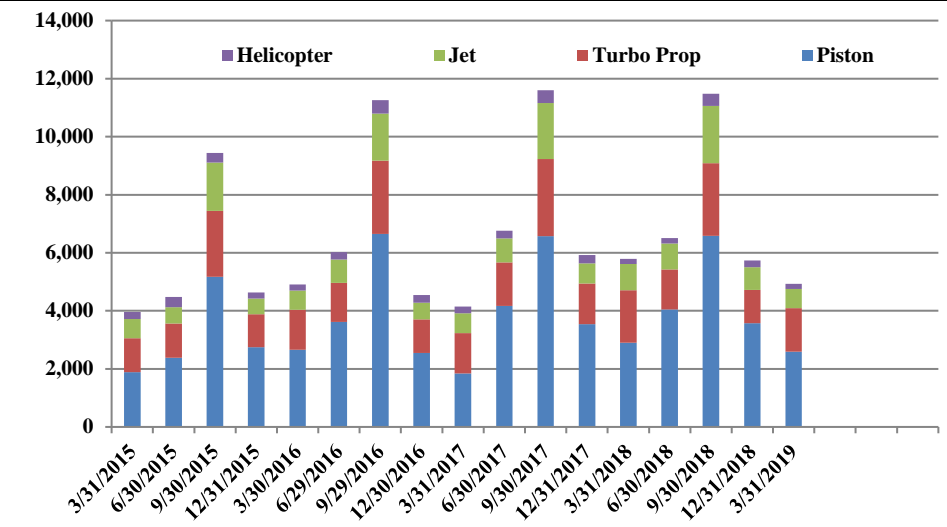
**Operations | by Month by Year**  
January 1, 2015 - March 31, 2019



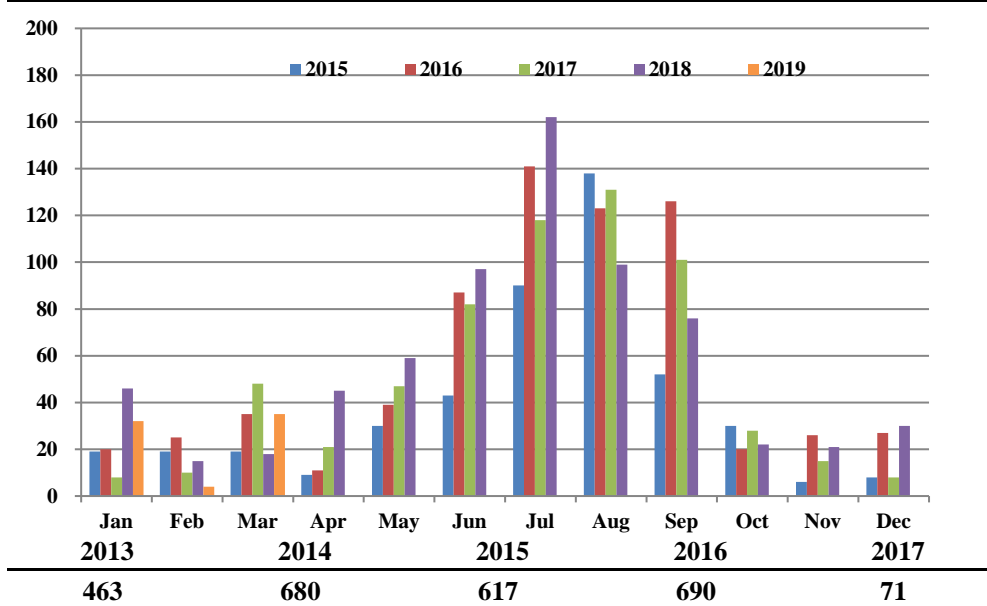
**Operations | by Type by Quarter**  
January 1, 2015 - March 31, 2019



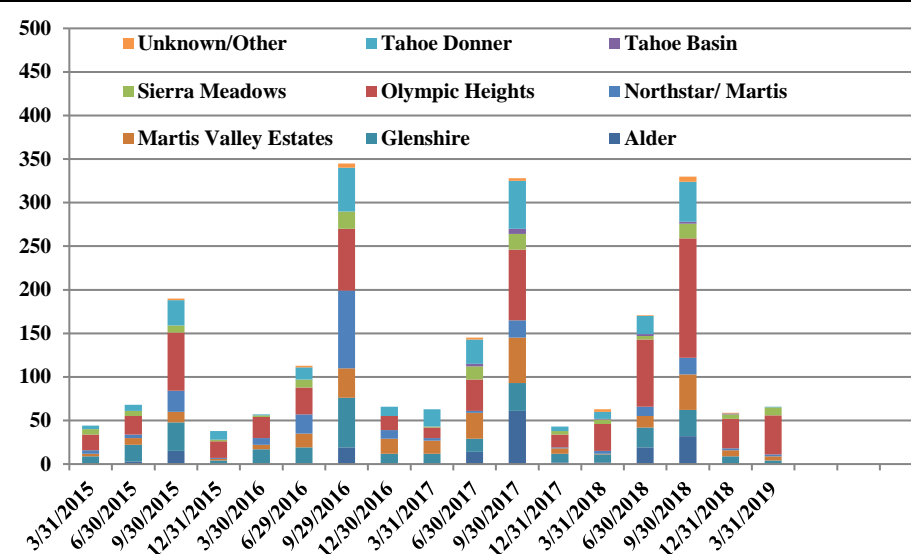
**Operations | Mix by Type by Quarter**  
January 1, 2015 - March 31, 2019



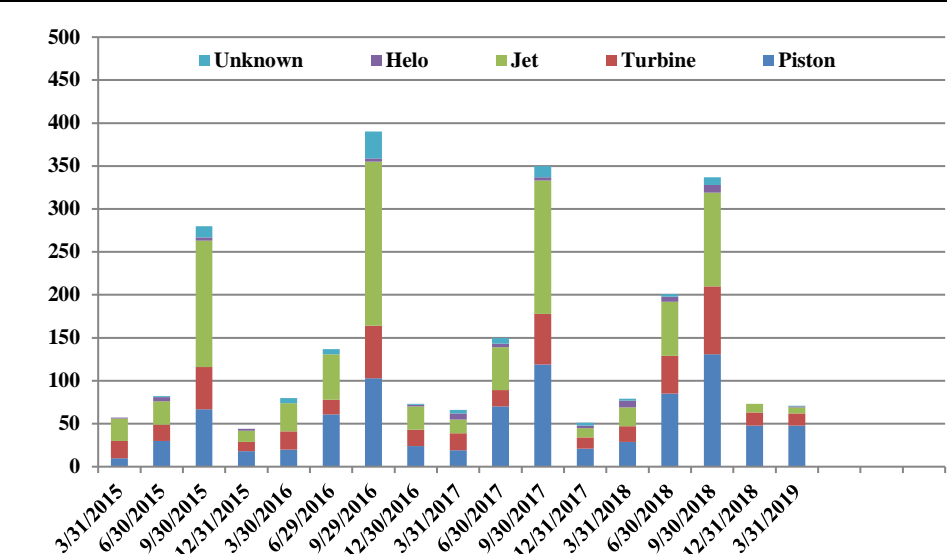
**Comments | by Month by Year**  
January 1, 2015 - March 31, 2019



**Comments | by Locale by Quarter**  
January 1, 2015 - March 31, 2019



**Comments | by Type by Quarter**  
January 1, 2015 - March 31, 2019



**Notes**

Operations graphs above use Total Powered Aircraft. Glider operations are not included.  
**2018** - Launched Community Hotline & Plane Noise with Smart Receipt  
**2017** - Residential Zones changed to match minimum of 1% of total comments  
**2015** - Jet > 50,000 lbs category added in Q1. **2014** - TTAD launched 'Report Noise' link in website



## Truckee Tahoe Airport District Operations and Community Comment Report as of 3/31/19



	OPERATIONS										Year over Year				Notes
	2018				2019				difference	%	4/1/17-3/31/18	4/1/18-3/31/19	difference	%	
	Jan	Feb	Mar	Q1	Jan	Feb	Mar	Q1			4/1/17-3/31/18	4/1/18-3/31/19			
<b>Operations Detail</b>															
Piston Single	921	1,001	738	2,660	1,104	303	920	2,327	(333)	(12.52%)	16,024	15,604	(420)	(2.62%)	
Piston Twin	87	70	85	242	136	26	107	269	27	11.16%	1,163	1,203	40	3.44%	
Turbo Prop	657	576	576	1,809	604	250	643	1,497	(312)	(17.25%)	7,353	6,528	(825)	(11.22%)	
Jet < 12,499 lbs	49	73	43	165	75	26	84	185	20	12.12%	981	916	(65)	(6.63%)	
Jet 12,500-19,999 lbs	146	109	94	349	126	46	106	278	(71)	(20.34%)	1,658	1,680	22	1.33%	
Jet 20,000-49,999 lbs	131	92	108	331	94	18	53	165	(166)	(50.15%)	1,373	1,440	67	4.88%	
Jet > 50,000 lbs	26	13	16	55	22	-	8	30	(25)	(45.45%)	353	271	(82)	(23.23%)	
Helicopter	59	87	35	181	51	35	94	180	(1)	(0.55%)	1,174	1,012	(162)	(13.80%)	
Total Powered Aircraft	2,076	2,021	1,695	5,792	2,212	704	2,015	4,931	(861)	(14.87%)	30,079	28,654	(1,425)	(4.74%)	
Gliders	-	-	-	-	-	-	-	-	-	0.00%	5,146	5,332	186	3.61%	
<b>Total Operations</b>	<b>2,076</b>	<b>2,021</b>	<b>1,695</b>	<b>5,792</b>	<b>2,212</b>	<b>704</b>	<b>2,015</b>	<b>4,931</b>	<b>(861)</b>	<b>(14.87%)</b>	<b>35,225</b>	<b>33,986</b>	<b>(1,239)</b>	<b>(3.52%)</b>	

	COMMENTS										Year over Year				Notes
	2018				2019				difference	%	4/1/17-3/31/18	4/1/18-3/31/19	difference	%	
	Jan	Feb	Mar	Q1	Jan	Feb	Mar	Q1			4/1/17-3/31/18	4/1/18-3/31/19			
<b>Comment Location</b>															
Alder	1	1	-	2	-	-	-	-	(2)	(100.00%)	79	51	(28)	(35.44%)	
Glenshire	5	1	3	9	1	-	3	4	(5)	(55.56%)	66	66	-	0.00%	
Martis Valley Estates	1	-	-	1	1	1	3	5	4	400.00%	89	66	(23)	(25.84%)	
Northstar/ Martis	1	1	1	3	-	-	2	2	(1)	(33.33%)	26	34	8	30.77%	
Olympic Heights	17	7	7	31	19	2	24	45	14	45.16%	163	293	130	79.75%	
Prosser Lakeview	8	4	4	16	3	1	-	4	(12)	(75.00%)	44	40	(4)	(9.09%)	
Russell Valley	-	-	-	-	1	-	-	1	1	100.00%	7	16	9	128.57%	
Sierra Meadows	5	-	-	5	7	-	2	9	4	80.00%	42	35	(7)	(16.67%)	
Tahoe Basin	-	1	-	1	-	-	-	-	(1)	(100.00%)	10	5	(5)	(50.00%)	
Tahoe Donner	5	-	3	8	-	-	1	1	(7)	(87.50%)	96	68	(28)	(29.17%)	
Unknown/Other	3	-	-	3	-	-	-	-	(3)	(100.00%)	8	8	-	0.00%	
<b>Total Comments</b>	<b>46</b>	<b>15</b>	<b>18</b>	<b>79</b>	<b>32</b>	<b>4</b>	<b>35</b>	<b>71</b>	<b>(8)</b>	<b>(10.13%)</b>	<b>630</b>	<b>682</b>	<b>52</b>	<b>8.25%</b>	<b>-</b>
<b>Comment Type</b>															
Piston	16	8	5	29	24	2	22	48	19	65.52%	239	312	73	30.54%	
Turbine	10	1	7	18	4	1	9	14	(4)	(22.22%)	109	152	43	39.45%	
Jet	13	4	5	22	4	1	2	7	(15)	(68.18%)	238	189	(49)	(20.59%)	
Helo	7	1	-	8	-	-	1	1	(7)	(87.50%)	19	16	(3)	(15.79%)	
Unknown	-	1	1	2	-	-	1	1	(1)	(50.00%)	25	13	(12)	(48.00%)	
<b>Total Comments</b>	<b>46</b>	<b>15</b>	<b>18</b>	<b>79</b>	<b>32</b>	<b>4</b>	<b>35</b>	<b>71</b>	<b>(8)</b>	<b>(10.13%)</b>	<b>630</b>	<b>682</b>	<b>52</b>	<b>8.25%</b>	<b>-</b>
<b>Operations per Comment</b>															
				73.3				69.5	(3.9)	(5.27%)	55.9	49.8	(6.1)	(10.87%)	-