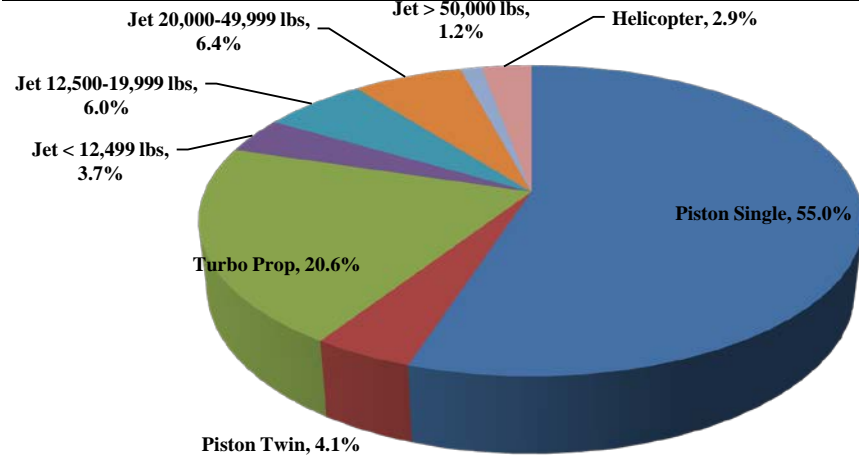




TRUCKEE TAHOE AIRPORT DISTRICT Operations and Community Comment Report as of 10/01/19

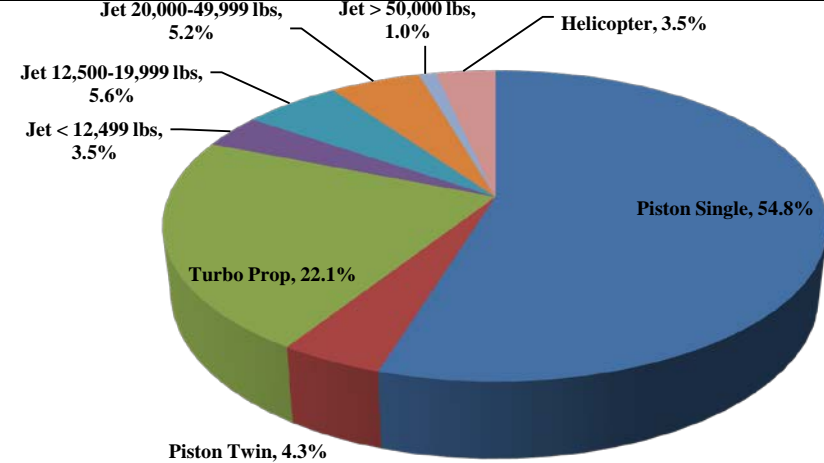


Current Quarter | Operations
July 1, 2019 - September 30, 2019



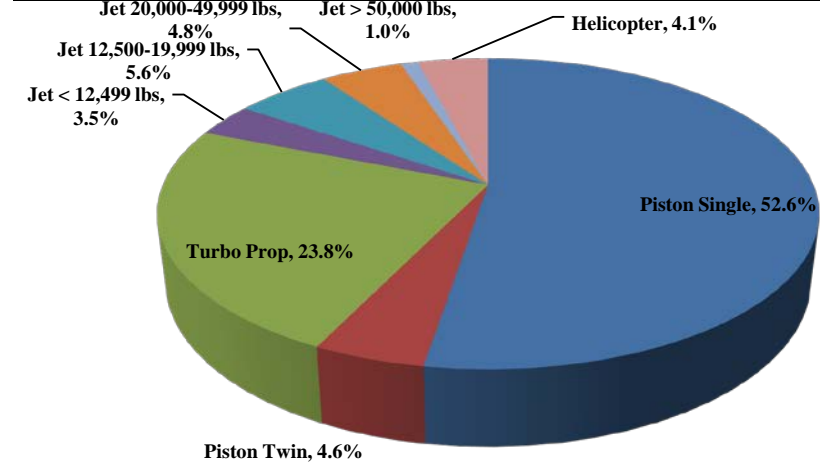
Total Powered Aircraft 12,723

Year-to-Date | Operations
January 1, 2019 - September 30, 2019



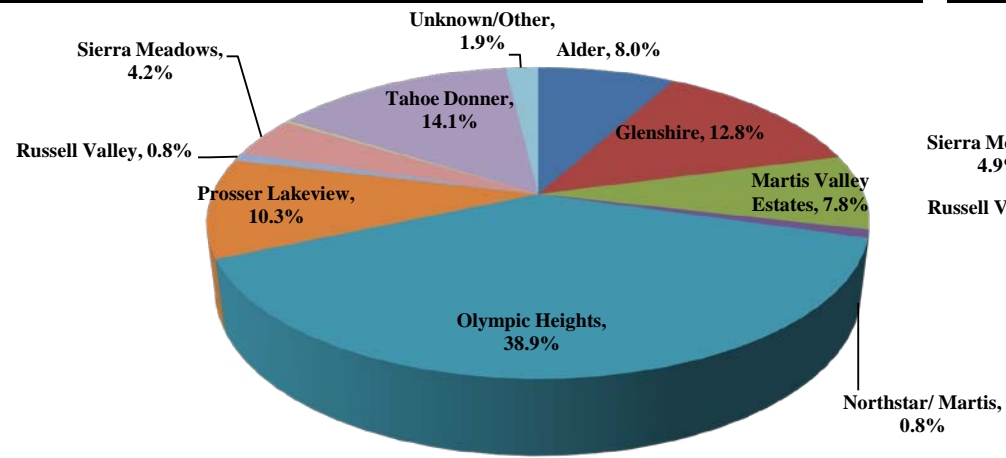
Total Powered Aircraft 24,166

Historic | Operations
January 1, 2015 - September 30, 2019



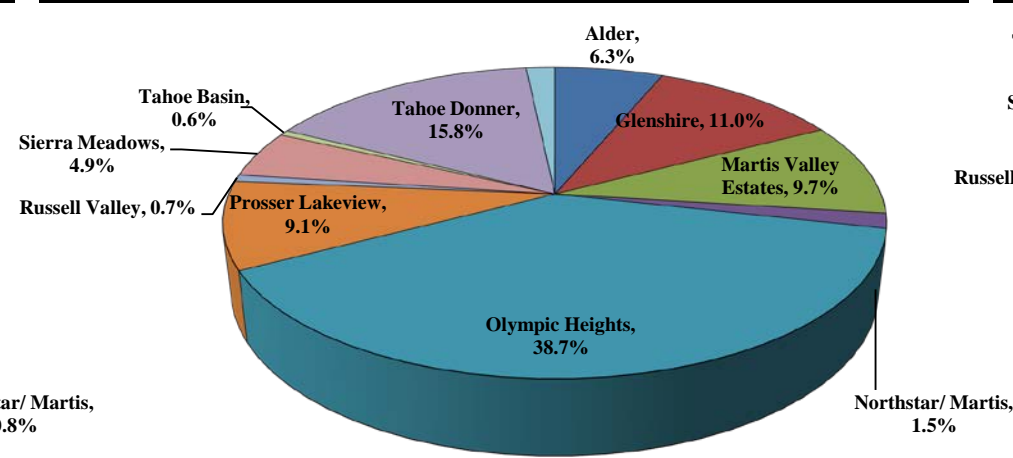
Total Powered Aircraft 131,364

Current Quarter | Comments
July 1, 2019 - September 30, 2019



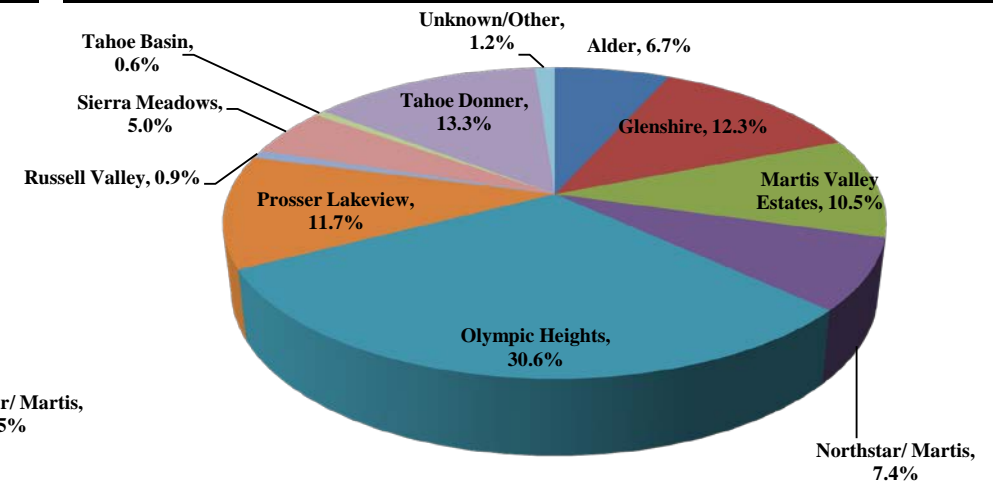
Total Comments 475
Operations / Comment 38

Year-to-Date | Comments
January 1, 2019 - September 30, 2019



Total Comments 715
Operations / Comment 43

Historic | Comments
January 1, 2015 - September 30, 2019



Total Comments 3,165
Operations / Comment 50

Notes

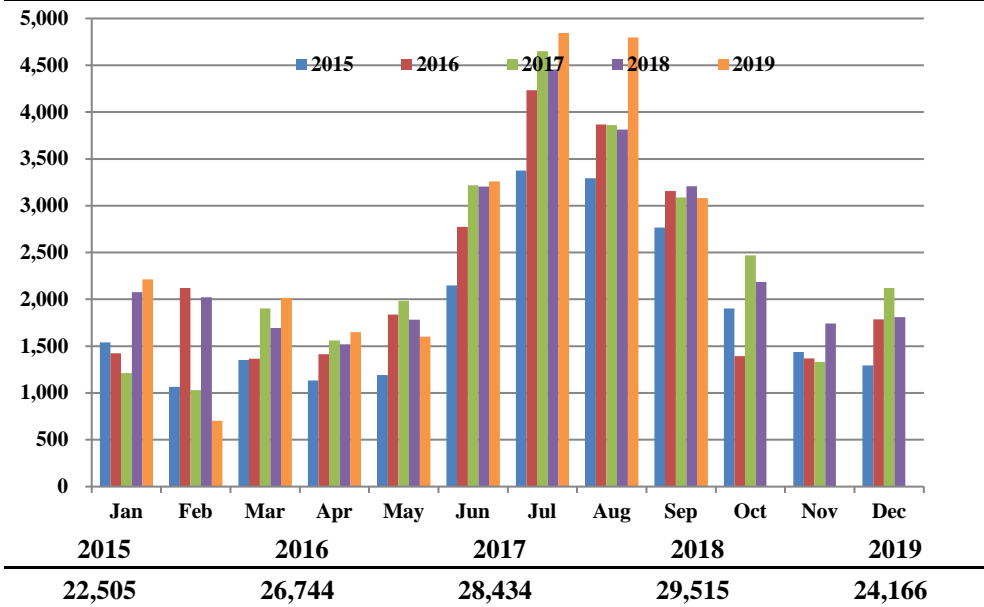
Operations graphs above use Total Powered Aircraft. Glider operations are not included.
2018 - Launched Community Hotline & Plane Noise with Smart Receipt
2017 - Residential Zones changed to match minimum of 1% of total comments
2015 - Jet > 50,000 lbs category added in Q1. **2014** - TTAD launched 'Report Noise' link in website



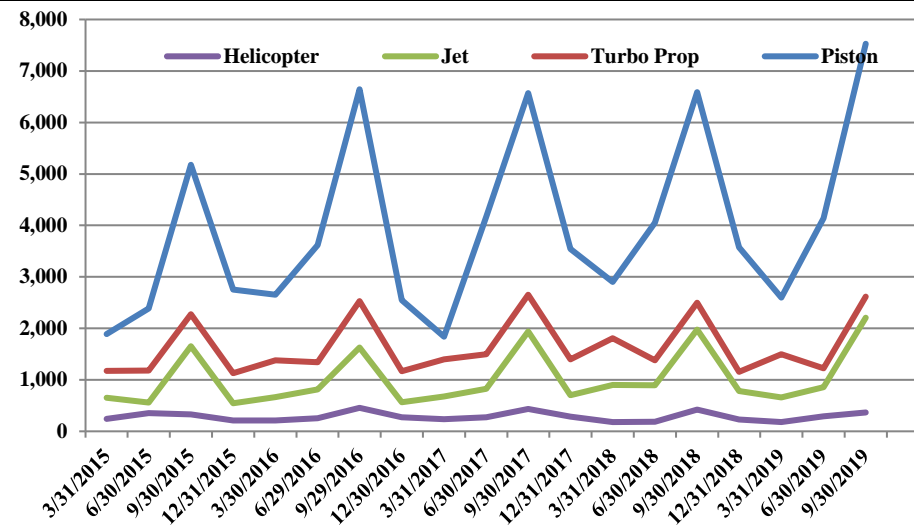
TRUCKEE TAHOE AIRPORT DISTRICT Operations and Community Comment Report as of 10/01/19



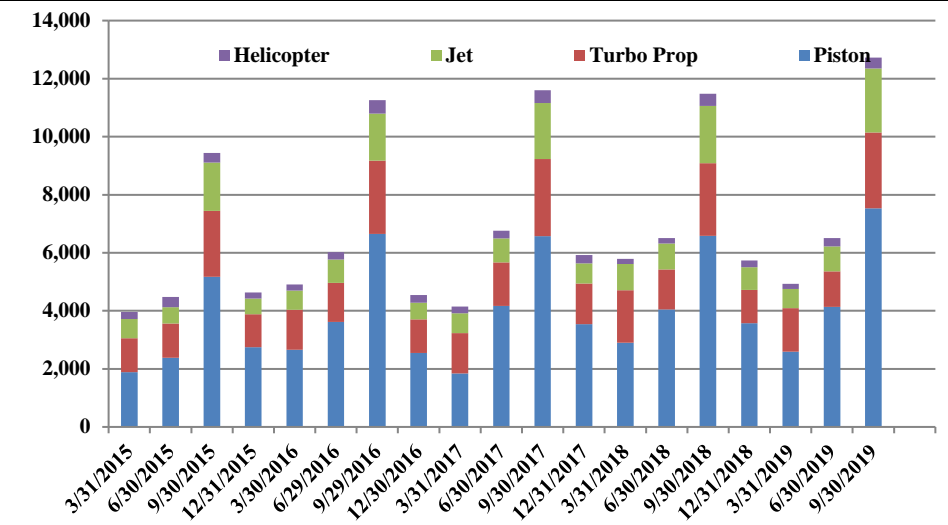
Operations | by Month by Year
January 1, 2015 - September 30, 2019



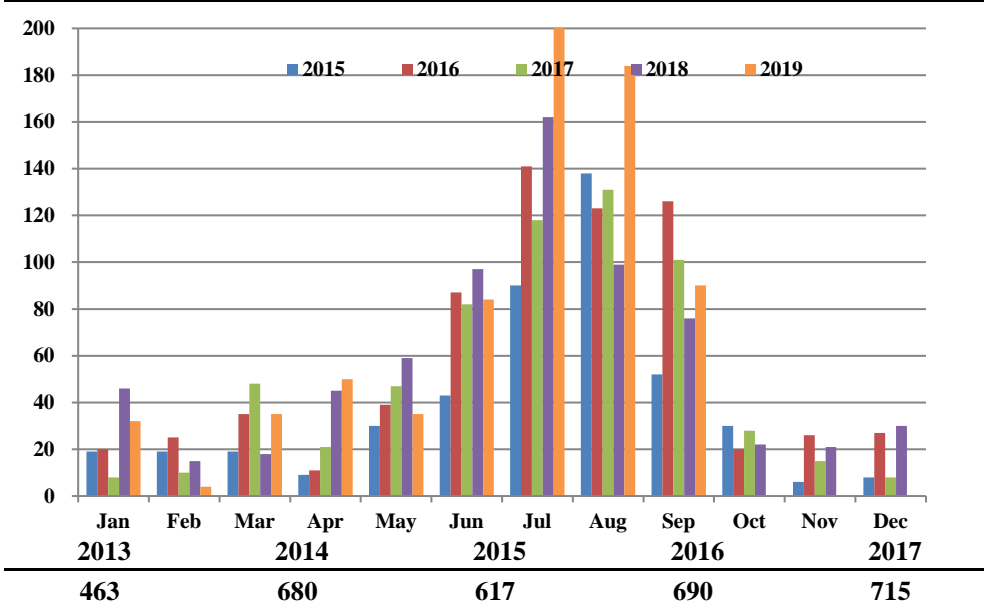
Operations | by Type by Quarter
January 1, 2015 - September 30, 2019



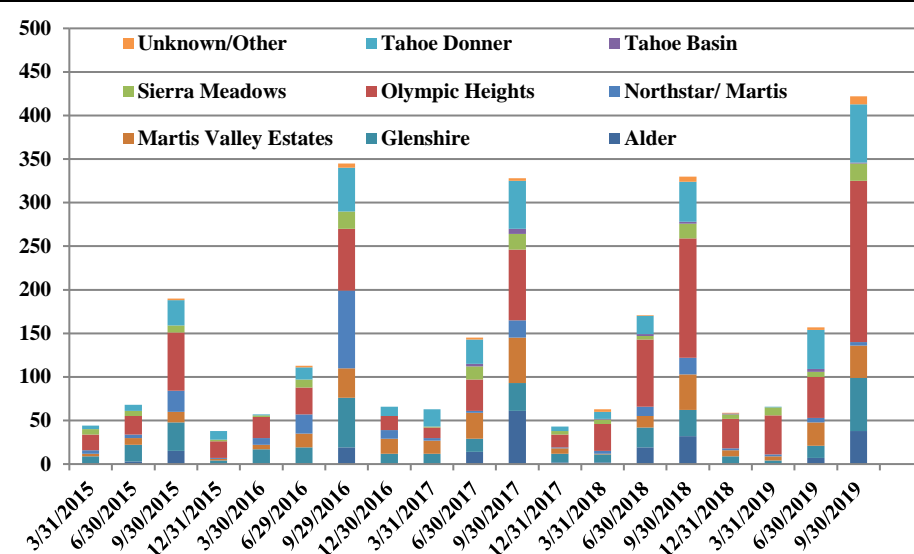
Operations | Mix by Type by Quarter
January 1, 2015 - September 30, 2019



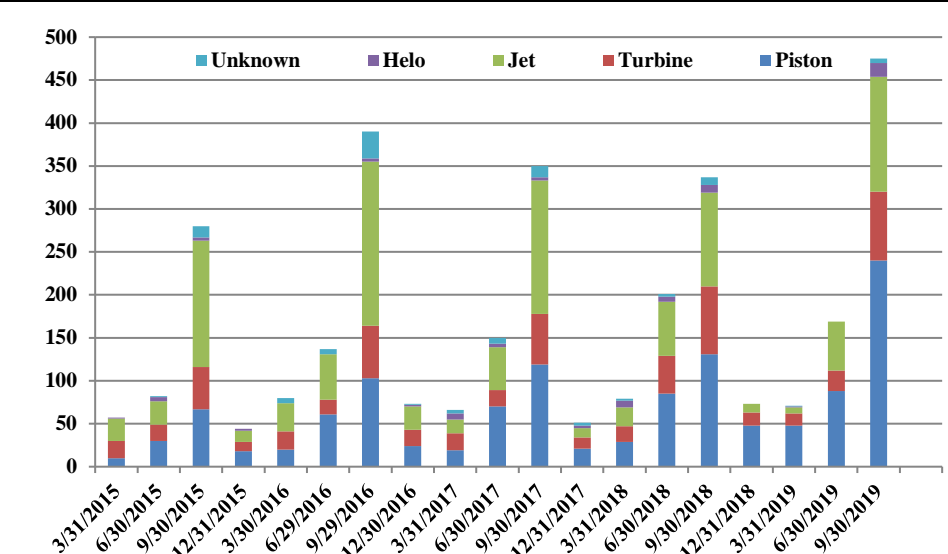
Comments | by Month by Year
January 1, 2015 - September 30, 2019



Comments | by Locale by Quarter
January 1, 2015 - September 30, 2019



Comments | by Type by Quarter
January 1, 2015 - September 30, 2019



Notes

Operations graphs above use Total Powered Aircraft. Glider operations are not included.
2018 - Launched Community Hotline & Plane Noise with Smart Receipt
2017 - Residential Zones changed to match minimum of 1% of total comments
2015 - Jet > 50,000 lbs category added in Q1. **2014** - TTAD launched 'Report Noise' link in website



Truckee Tahoe Airport District Operations and Community Comment Report as of 10/01/19



	OPERATIONS										Year over Year				Notes
	2018				2019				difference	%	10/1/17-9/30/18	10/1/18-9/30/19	difference	%	
	Jul	Aug	Sept	Q3	Jul	Aug	Sep	Q3							
Operations Detail															
Piston Single	2,315	1,923	1,887	6,125	2,781	2,549	1,670	7,000	875	14.29%	15,844	16,658	814	5.14%	
Piston Twin	200	140	124	464	156	219	153	528	64	13.79%	1,239	1,180	(59)	(4.76%)	
Turbo Prop	1,042	853	601	2,496	939	1,050	630	2,619	123	4.93%	7,081	6,492	(589)	(8.32%)	
Jet < 12,499 lbs	128	160	103	391	155	182	140	477	86	21.99%	913	1,011	98	10.73%	
Jet 12,500-19,999 lbs	311	257	175	743	326	274	163	763	20	2.69%	1,729	1,652	(77)	(4.45%)	
Jet 20,000-49,999 lbs	254	287	150	691	328	300	181	809	118	17.08%	1,534	1,549	15	0.98%	
Jet > 50,000 lbs	74	58	17	149	69	60	29	158	9	6.04%	291	294	3	1.03%	
Helicopter	133	135	152	420	90	162	117	369	(51)	(12.14%)	1,068	1,068	-	0.00%	
Total Powered Aircraft	4,457	3,813	3,209	11,479	4,844	4,796	3,083	12,723	1,244	10.84%	29,699	29,904	205	0.69%	
Gliders	1,940	1,268	952	4,160	2,280	2,044	1,044	5,368	1,208	29.04%	5,332	6,574	1,242	23.29%	
Total Operations	6,397	5,081	4,161	15,639	7,124	6,840	4,127	18,091	2,452	15.68%	35,031	36,478	1,447	4.13%	

	COMMENTS										Year over Year				Notes
	2018				2019				difference	%	10/1/17-9/30/18	10/1/18-9/30/19	difference	%	
	Jul	Aug	Sept	Q3	Jul	Aug	Sep	Q3							
Comment Location															
Alder	19	12	1	32	25	11	2	38	6	18.75%	55	45	(10)	(18.18%)	
Glenshire	11	8	11	30	28	14	19	61	31	103.33%	72	88	16	22.22%	
Martis Valley Estates	23	13	5	41	16	11	10	37	(4)	(9.76%)	61	76	15	24.59%	
Northstar/ Martis	11	8	-	19	1	3	-	4	(15)	(78.95%)	34	13	(21)	(61.76%)	
Olympic Heights	55	33	49	137	69	81	35	185	48	35.04%	260	311	51	19.62%	
Prosser Lakeview	4	-	-	4	16	33	-	49	45	1125.00%	49	74	25	51.02%	
Russell Valley	2	1	-	3	-	3	1	4	1	33.33%	12	10	(2)	(16.67%)	
Sierra Meadows	14	2	1	17	16	1	3	20	3	17.65%	30	40	10	33.33%	
Tahoe Basin	-	2	-	2	-	1	-	1	(1)	(50.00%)	5	5	-	0.00%	
Tahoe Donner	20	19	7	46	26	26	15	67	21	45.65%	80	113	33	41.25%	
Unknown/Other	3	1	2	6	4	-	5	9	3	50.00%	10	13	3	30.00%	
Total Comments	162	99	76	337	201	184	90	475	138	40.95%	668	788	120	17.96%	
Comment Type															
Piston	62	34	35	131	95	101	44	240	109	83.21%	266	424	158	59.40%	
Turbine	30	23	26	79	39	28	13	80	1	1.27%	154	133	(21)	(13.64%)	
Jet	59	37	13	109	62	53	19	134	25	22.94%	205	208	3	1.46%	
Helo	6	2	1	9	4	2	10	16	7	77.78%	26	17	(9)	(34.62%)	
Unknown	5	3	1	9	1	-	4	5	(4)	(44.44%)	17	6	(11)	(64.71%)	
Total Comments	162	99	76	337	201	184	90	475	138	40.95%	668	788	120	17.96%	
-	-	-	-	-	-	-	-	-	-	0.00%	-	-	-	-	
Operations per Comment															
	46.4				38.1				(8.3)	(17.93%)	52.4	46.3	(6.1)	(11.73%)	-