

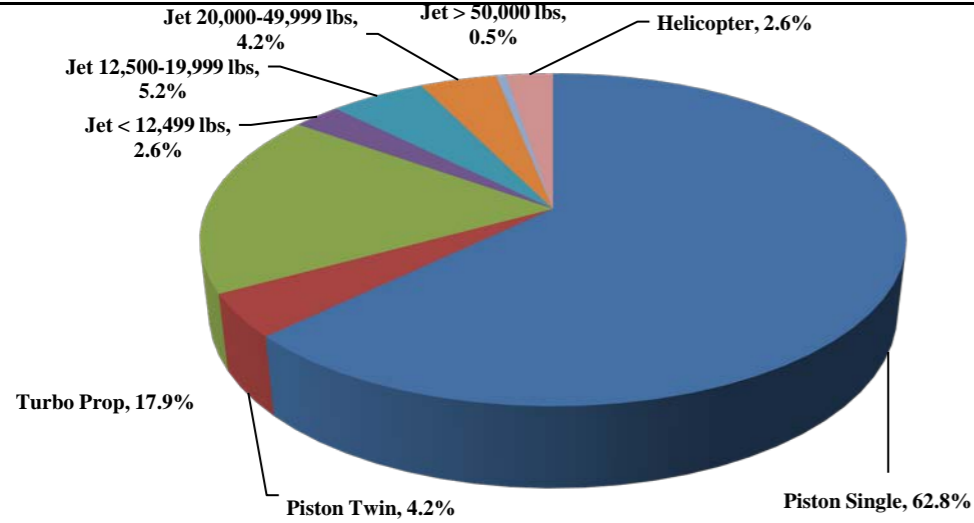


TRUCKEE TAHOE AIRPORT DISTRICT Operations and Community Comment Report as of 12/31/19



Current Quarter | Operations

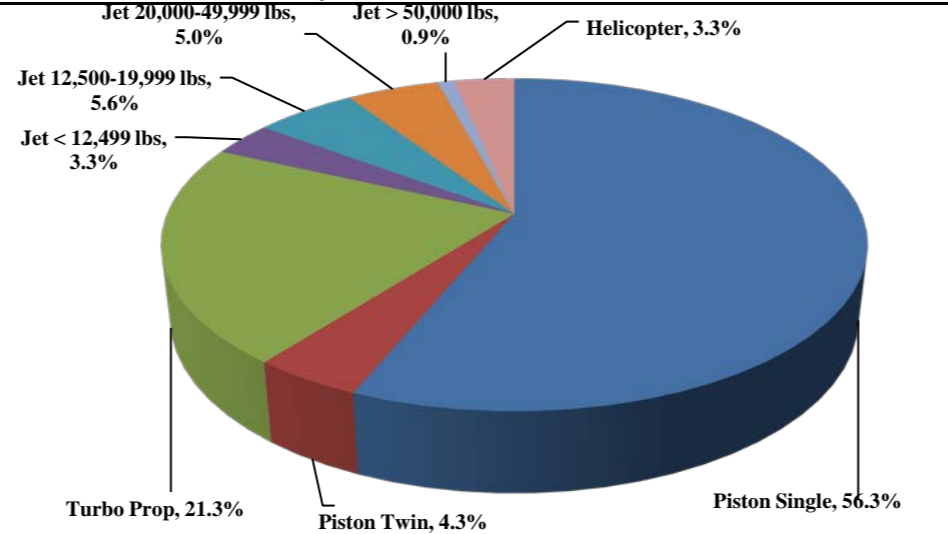
October 1, 2019 - December 31, 2019



Total Powered Aircraft 5,639

Year-to-Date | Operations

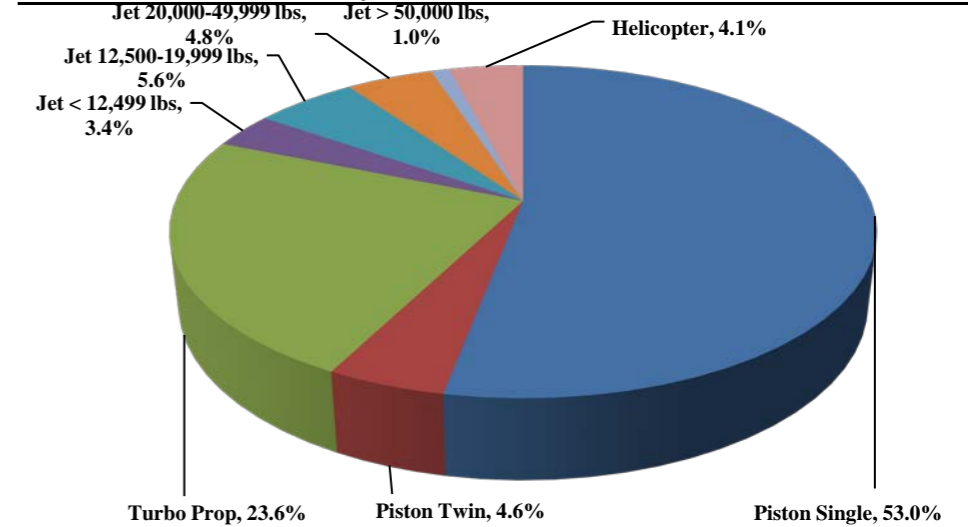
January 1, 2019 - December 31, 2019



Total Powered Aircraft 29,805

Historic | Operations

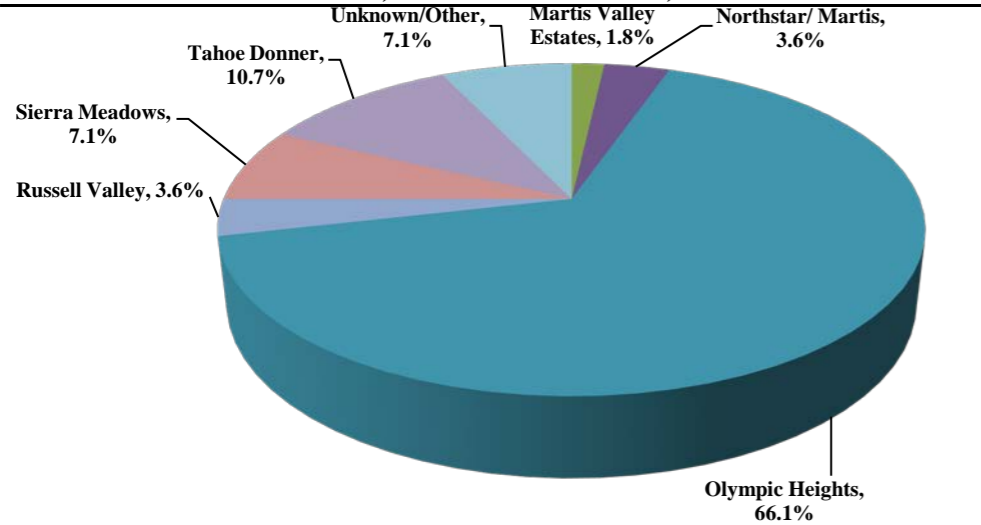
January 1, 2015 - December 31, 2019



Total Powered Aircraft 137,003

Current Quarter | Comments

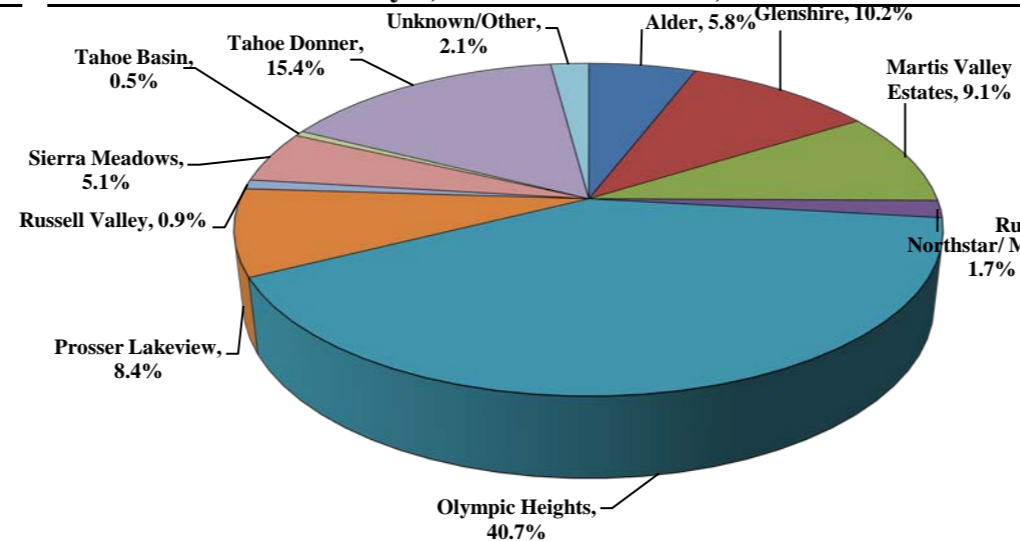
October 1, 2019 - December 31, 2019



Total Comments 56
Operations / Comment 101

Year-to-Date | Comments

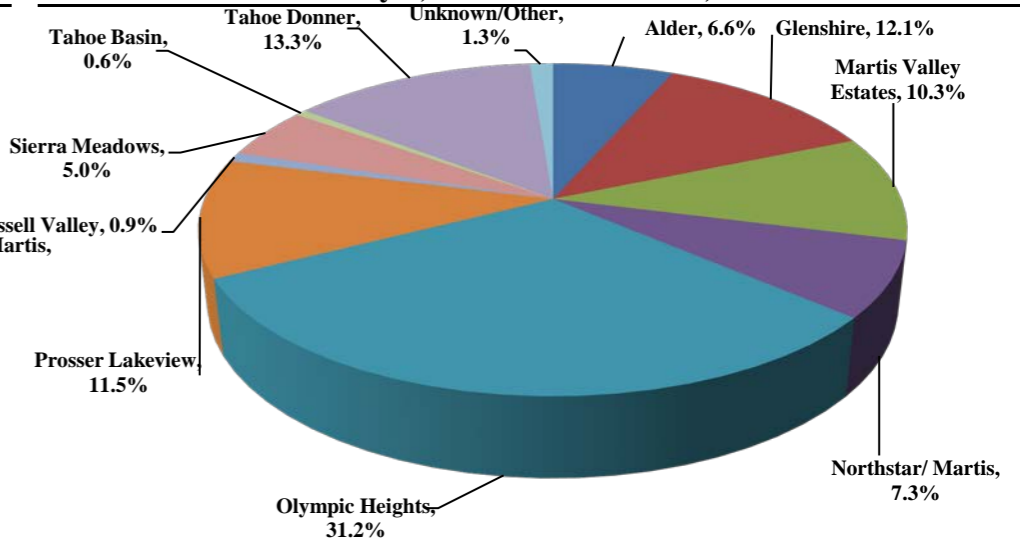
January 1, 2019 - December 31, 2019



Total Comments 771
Operations / Comment 47

Historic | Comments

January 1, 2015 - December 31, 2019



Total Comments 3,221
Operations / Comment 51

Notes

Operations graphs above use Total Powered Aircraft. Glider operations are not included.

2018 - Launched Community Hotline & Plane Noise with Smart Receipt

2017 - Residential Zones changed to match minimum of 1% of total comments

2015 - Jet > 50,000 lbs category added in Q1

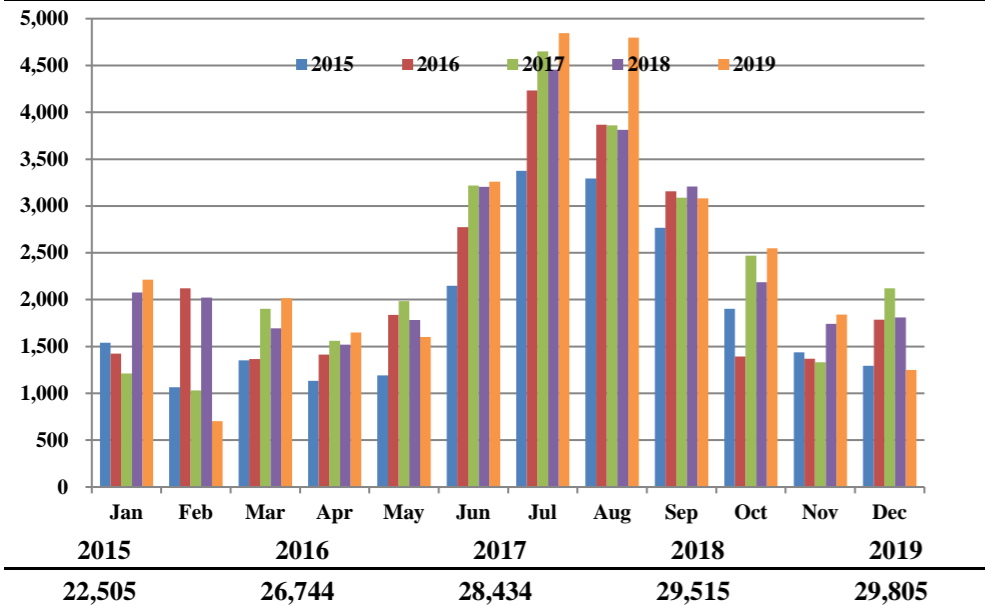
2014 - TTAD launched 'Report Noise' link in website



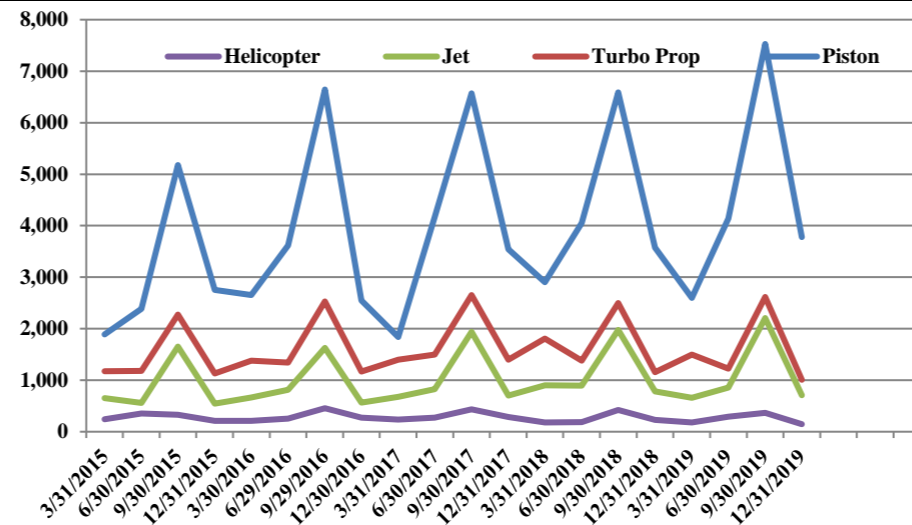
TRUCKEE TAHOE AIRPORT DISTRICT Operations and Community Comment Report as of 12/31/19



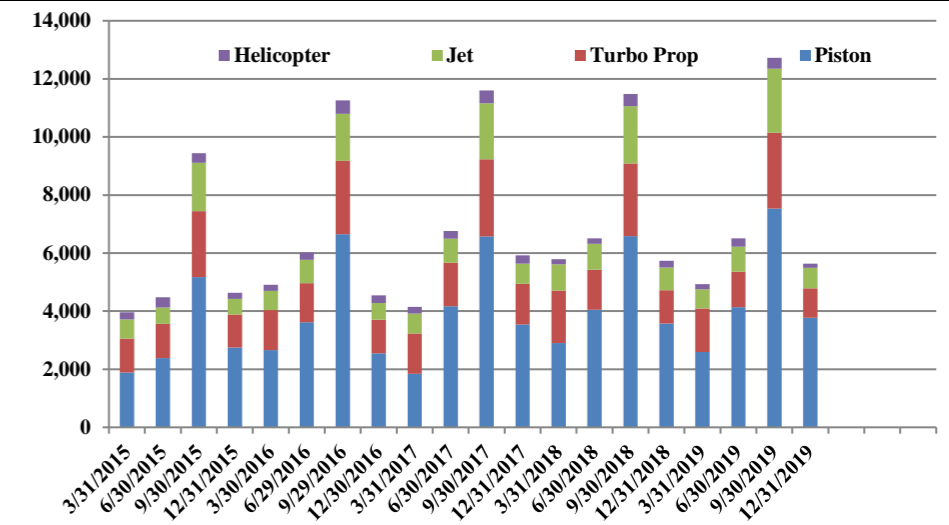
Operations | by Month by Year
January 1, 2015 - December 31, 2019



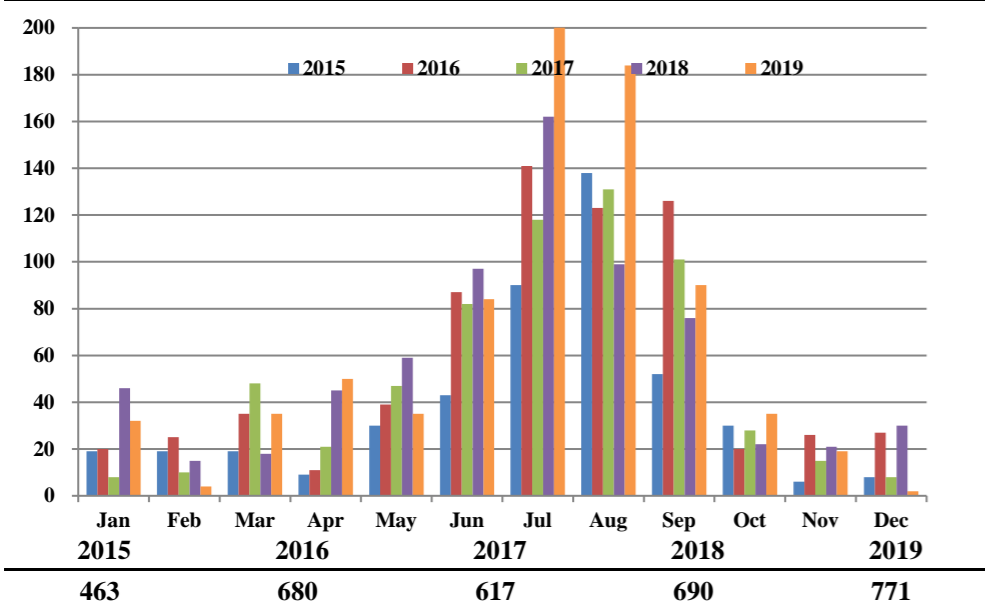
Operations | by Type by Quarter
January 1, 2015 - December 31, 2019



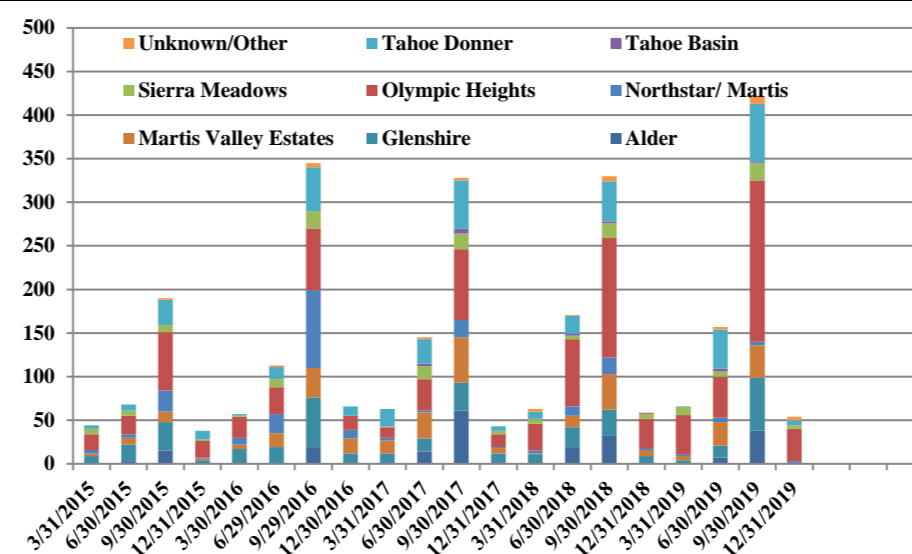
Operations | Mix by Type by Quarter
January 1, 2015 - December 31, 2019



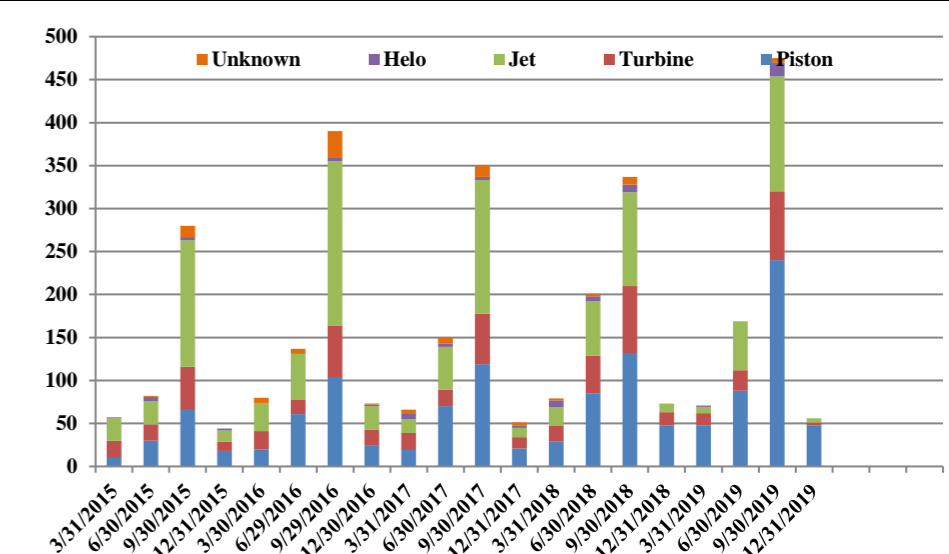
Comments | by Month by Year
January 1, 2015 - December 31, 2019



Comments | by Locale by Quarter
January 1, 2015 - December 31, 2019



Comments | by Type by Quarter
January 1, 2015 - December 31, 2019



Notes

Operations graphs above use Total Powered Aircraft. Glider operations are not included.
 2018 - Launched Community Hotline & Plane Noise with Smart Receipt
 2017 - Residential Zones changed to match minimum of 1% of total comments
 2015 - Jet > 50,000 lbs category added in Q1
 2014 - TTAD launched 'Report Noise' link in website



Truckee Tahoe Airport District Operations and Community Comment Report as of 12/31/19



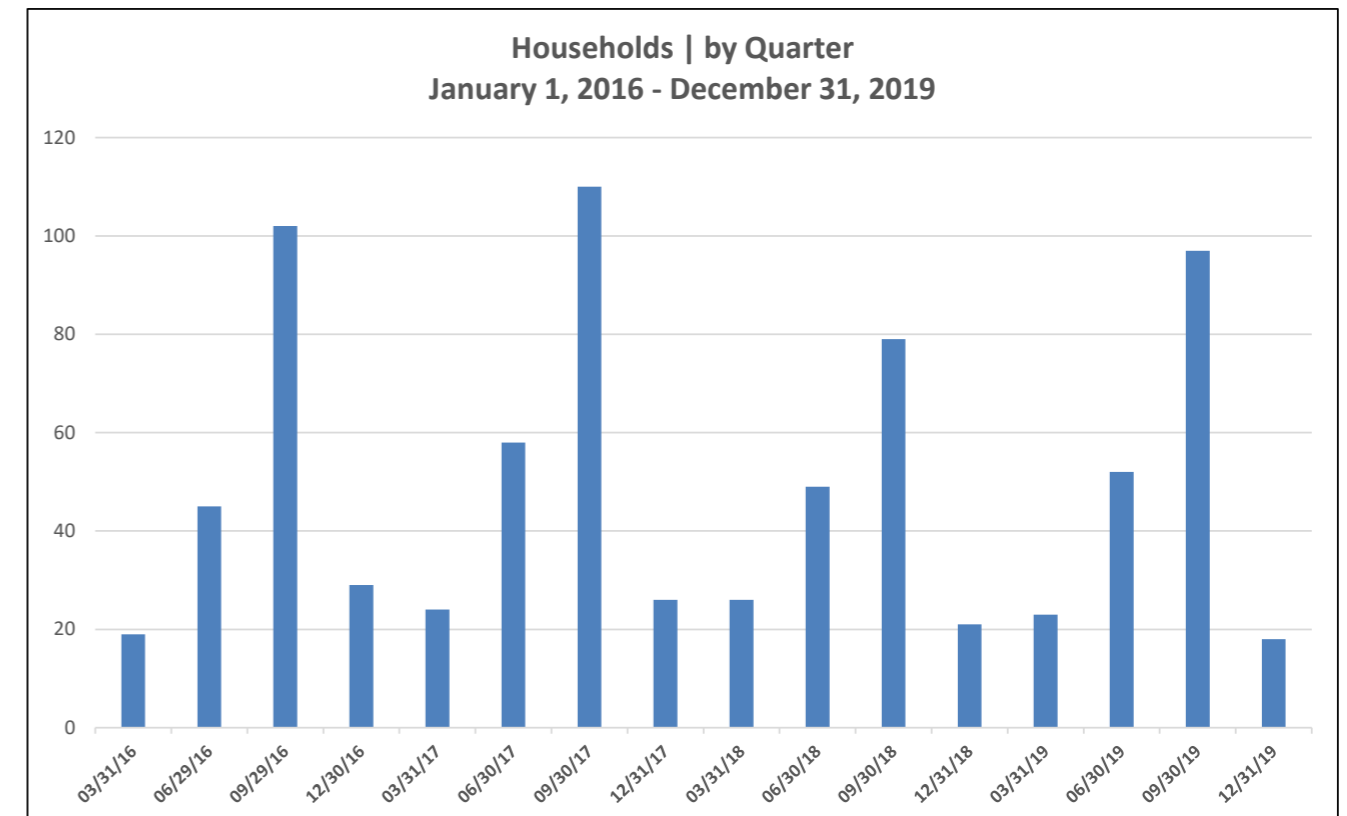
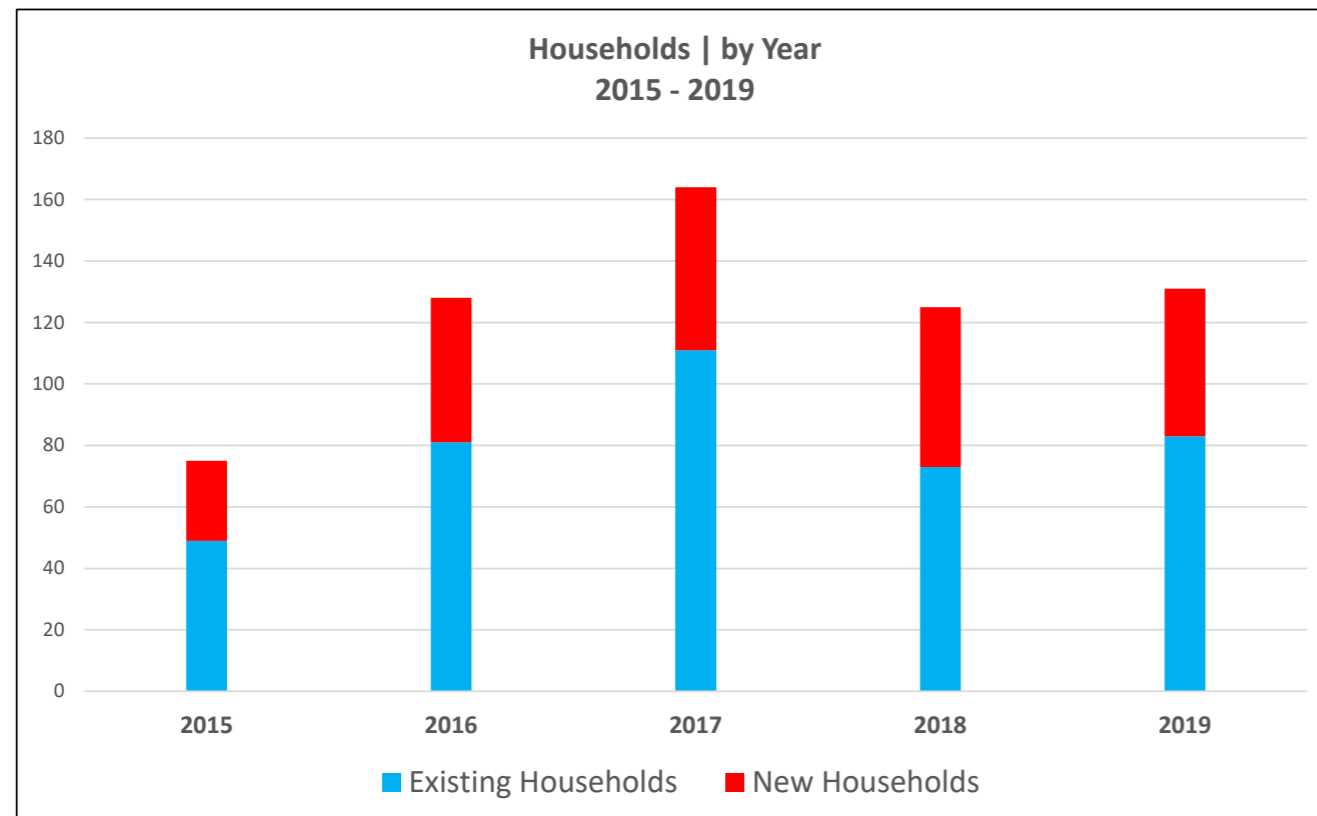
OPERATIONS															
	2018				2019				difference	%	Year over Year				Notes
	Oct	Nov	Dec	Q4	Oct	Nov	Dec	Q4			1/1/18-12/31/18	1/1/19-12/31/19	difference	%	
Operations Detail															
Piston Single	921	1,001	738	2,660	1,740	1,282	520	3,542	882	33.16%	15,937	16,775	838	5.26%	
Piston Twin	52	40	55	147	130	68	38	236	89	60.54%	1,176	1,269	93	7.91%	
Turbo Prop	374	332	448	1,154	336	295	377	1,008	(146)	(12.65%)	6,840	6,346	(494)	(7.22%)	
Jet < 12,499 lbs	52	46	61	159	60	40	46	146	(13)	(8.18%)	896	998	102	11.38%	
Jet 12,500-19,999 lbs	71	88	129	288	115	55	124	294	6	2.08%	1,751	1,658	(93)	(5.31%)	
Jet 20,000-49,999 lbs	86	68	128	282	90	51	96	237	(45)	(15.96%)	1,606	1,504	(102)	(6.35%)	
Jet > 50,000 lbs	14	18	22	54	8	6	16	30	(24)	(44.44%)	296	270	(26)	(8.78%)	
Helicopter	85	83	61	229	69	43	34	146	(83)	(36.24%)	1,013	985	(28)	(2.76%)	
Total Powered Aircraft	1,655	1,676	1,642	4,973	2,548	1,840	1,251	5,639	666	13.39%	29,515	29,805	290	0.98%	
Gliders	-	-	-	-	-	-	-	-	-	0.00%	5,332	6,574	1,242	23.29%	
Total Operations	1,655	1,676	1,642	4,973	2,548	1,840	1,251	5,639	666	13.39%	34,847	36,379	1,532	4.40%	

COMMENTS															
	2018				2019				difference	%	Year over Year				Notes
	Oct	Nov	Dec	Q4	Oct	Nov	Dec	Q4			1/1/18-12/31/18	1/1/19-12/31/19	difference	%	
Comment Location															
Alder	-	-	-	-	-	-	-	-	-	0.00%	53	45	(8)	(15.09%)	
Glenshire	3	2	4	9	-	-	-	-	(9)	(100.00%)	71	79	8	11.27%	
Martis Valley Estates	2	3	2	7	-	1	-	1	(6)	(85.71%)	62	70	8	12.90%	
Northstar/ Martis	1	-	1	2	2	-	-	2	-	0.00%	35	13	(22)	(62.86%)	
Olympic Heights	14	13	7	34	26	11	-	37	3	8.82%	279	314	35	12.54%	
Prosser Lakeview	-	-	9	9	-	-	-	-	(9)	(100.00%)	52	65	13	25.00%	
Russell Valley	-	-	5	5	-	2	-	2	(3)	(60.00%)	15	7	(8)	(53.33%)	
Sierra Meadows	1	2	2	5	3	1	-	4	(1)	(20.00%)	31	39	8	25.81%	
Tahoe Basin	-	1	-	1	-	-	-	-	(1)	(100.00%)	6	4	(2)	(33.33%)	
Tahoe Donner	-	-	-	-	2	2	2	6	6	100.00%	75	119	44	58.67%	
Unknown/Other	1	-	-	1	2	2	-	4	3	300.00%	11	16	5	45.45%	
Total Comments	22	21	30	73	35	19	2	56	(17)	(23.29%)	690	771	81	11.74%	-
Comment Type															
Piston	15	16	17	48	31	17	-	48	-	0.00%	293	424	131	44.71%	
Turbine	4	4	7	15	2	-	1	3	(12)	(80.00%)	156	121	(35)	(22.44%)	
Jet	3	1	6	10	2	2	1	5	(5)	(50.00%)	204	203	(1)	(0.49%)	
Helo	-	-	-	-	-	-	-	-	-	0.00%	23	17	(6)	(26.09%)	
Unknown	-	-	-	-	-	-	-	-	-	0.00%	14	6	(8)	(57.14%)	
Total Comments	22	21	30	73	35	19	2	56	(17)	(23.29%)	690	771	81	11.74%	-
Operations per Comment															
				68.1				100.7	32.6	47.81%	50.5	47.2	(3.3)	(6.57%)	-

Truckee Tahoe Airport District Annual Operations & Households Summary 2015-2019

Operations Detail

	Operations							Operations Mix						
	2015	2016	2017	2018	2019	Total	Avg. Change	2015	2016	2017	2018	2019	Total	Avg. Change
Piston Single	10,676	14,262	14,978	15,937	16,775	72,628	11.96%	38.66%	43.85%	44.60%	45.73%	46.11%	44.03%	7.45%
Piston Twin	1,524	1,205	1,145	1,176	1,269	6,319	-4.47%	5.52%	3.70%	3.41%	3.37%	3.49%	3.83%	-2.03%
Total Piston	12,200	15,467	16,123	17,113	18,044	78,947	10.28%	44.18%	47.56%	48.01%	49.11%	49.60%	47.86%	5.42%
Turbo Prop	5,756	6,413	6,942	6,840	6,346	32,297	2.47%	20.85%	19.72%	20.67%	19.63%	17.44%	19.58%	-3.40%
Jet < 12,499 lbs	924	918	960	896	998	4,696	1.94%	3.35%	2.82%	2.86%	2.57%	2.74%	2.85%	-0.60%
Jet 12,500-19,999 lbs	1,290	1,331	1,599	1,751	1,658	7,629	6.48%	4.67%	4.09%	4.76%	5.02%	4.56%	4.63%	-0.11%
Jet 20,000-49,999 lbs	970	1,164	1,274	1,606	1,504	6,518	11.59%	3.51%	3.58%	3.79%	4.61%	4.13%	3.95%	0.62%
Jet > 50,000 lbs	227	261	307	296	270	1,361	n/a	0.82%	0.80%	0.91%	0.85%	0.74%	0.83%	-0.08%
Total Jet	3,411	3,674	4,140	4,549	4,430	20,204	6.75%	12.35%	11.30%	12.33%	13.05%	12.18%	12.25%	-0.18%
Helicopter	1,138	1,190	1,229	1,013	985	5,555	-3.55%	4.12%	3.66%	3.66%	2.91%	2.71%	3.37%	-1.41%
Total Powered Aircraft	22,505	26,744	28,434	29,515	29,805	137,003	7.28%	81.50%	82.23%	84.68%	84.70%	81.93%	83.06%	0.43%
Gliders	5,108	5,780	5,146	5,332	6,574	27,940	6.51%	18.50%	17.77%	15.32%	15.30%	18.07%	16.94%	-0.43%
Total Operations	27,613	32,524	33,580	34,847	36,379	164,943	7.14%	100.00%	100.00%	100.00%	100.00%	100.00%	100.00%	0.00%



Truckee Tahoe Airport District Operations and Community Comment Report 2015-2019

OPERATIONS

	2015					2016					2017					2018					2019					Total
	Q1	Q2	Q3	Q4	Total	Q1	Q2	Q3	Q4	Total	Q1	Q2	Q3	Q4	Total	Q1	Q2	Q3	Q4	Total	Q1	Q2	Q3	Q4	Total	
Operations Detail																										
Piston Single	1,561	1,996	4,594	2,525	10,676	2,335	3,389	6,189	2,349	14,262	1,614	3,910	6,122	3,332	14,978	2,660	3,727	6,125	3,425	15,937	2,327	3,906	7,000	3,542	16,775	72,628
Piston Twin	326	390	581	227	1,524	320	230	458	197	1,205	224	261	450	210	1,145	242	323	464	147	1,176	269	236	528	236	1,269	6,319
Turbo Prop	1,174	1,179	2,274	1,129	5,756	1,380	1,340	2,528	1,165	6,413	1,398	1,496	2,653	1,395	6,942	1,809	1,381	2,496	1,154	6,840	1,497	1,222	2,619	1,008	6,346	32,297
Jet < 12,499 lbs	215	161	415	133	924	188	198	390	142	918	144	189	451	176	960	165	181	391	159	896	185	190	477	146	998	4,696
Jet 12,500-19,999 lbs	227	210	622	231	1,290	236	295	596	204	1,331	290	305	738	266	1,599	349	371	743	288	1,751	278	323	763	294	1,658	7,629
Jet 20,000-49,999 lbs	144	167	503	156	970	182	263	542	177	1,164	232	268	564	210	1,274	331	302	691	282	1,606	165	293	809	237	1,504	6,518
Jet > 50,000 lbs	67	20	115	25	227	61	58	98	44	261	9	63	186	49	307	55	38	149	54	296	30	52	158	30	270	1,361
Helicopter	244	352	331	211	1,138	211	252	456	271	1,190	236	272	437	284	1,229	181	183	420	229	1,013	180	290	369	146	985	5,555
Total Powered Aircraft	3,958	4,475	9,435	4,637	22,505	4,913	6,025	11,257	4,549	26,744	4,147	6,764	11,601	5,922	28,434	5,792	6,506	11,479	5,738	29,515	4,931	6,512	12,723	5,639	29,805	137,003
Gliders	-	1,000	4,108	-	5,108	-	1,216	4,564	-	5,780	-	888	4,258	-	5,146	-	1,172	4,160	-	5,332	-	1,206	5,368	-	6,574	27,940
Total Operations	3,958	5,475	13,543	4,637	27,613	4,913	7,241	15,821	4,549	32,524	4,147	7,652	15,859	5,922	33,580	5,792	7,678	15,639	5,738	34,847	4,931	7,718	18,091	5,639	36,379	164,943

COMMENTS

	2015					2016					2017					2018					2019					Total
	Q1	Q2	Q3	Q4	Total	Q1	Q2	Q3	Q4	Total	Q1	Q2	Q3	Q4	Total	Q1	Q2	Q3	Q4	Total	Q1	Q2	Q3	Q4	Total	
Comment Location																										
Alder	-	3	15	-	18	-	-	19	-	19	-	14	61	2	77	2	19	32	-	53	-	7	38	-	45	212
Glenshire	9	19	33	4	65	17	19	57	12	105	12	15	32	10	69	9	23	30	9	71	4	14	61	-	79	389
Martis Valley Estates	3	8	12	2	25	5	16	34	17	72	15	30	52	6	103	1	13	41	7	62	5	27	37	1	70	332
Northstar/ Martis	4	4	24	1	33	8	22	89	10	129	3	2	20	1	26	3	11	19	2	35	2	5	4	2	13	236
Olympic Heights	18	21	67	19	125	24	31	71	16	142	12	36	81	15	144	31	77	137	34	279	45	47	185	37	314	1,004
Prosser Lakeview	13	14	90	6	123	23	24	45	7	99	3	4	18	6	31	16	23	4	9	52	4	12	49	-	65	370
Russell Valley	-	-	-	-	-	-	-	-	-	-	-	1	4	2	7	-	7	3	5	15	1	-	4	2	7	29
Sierra Meadows	6	6	8	2	22	2	9	20	-	31	1	15	18	4	38	5	4	17	5	31	9	6	20	4	39	161
Tahoe Basin	-	-	-	-	-	-	-	-	-	-	-	3	6	-	9	1	2	2	1	6	-	3	1	-	4	19
Tahoe Donner	4	7	29	10	50	1	14	50	11	76	20	28	55	5	108	8	21	46	-	75	1	45	67	6	119	428
Unknown/Other	-	-	2	-	2	-	2	5	-	7	-	2	3	-	5	3	1	6	1	11	-	3	9	4	16	41
Total Comments	57	82	280	44	463	80	137	390	73	680	66	150	350	51	617	79	201	337	73	690	71	169	475	56	771	3,221
Comment Type																										
Piston	10	30	67	18	125	20	61	103	24	208	19	70	119	21	229	29	85	131	48	293	48	88	240	48	424	1,279
Turbine	20	19	49	11	99	21	17	61	19	118	20	19	59	13	111	18	44	79	15	156	14	24	80	3	121	605
Jet	26	27	147	13	213	33	53	191	27	304	16	50	155	11	232	22	63	109	10	204	7	57	134	5	203	1,156
Helo	1	5	4	2	12	-	-	4	2	6	7	4	4	3	18	8	6	9	-	23	1	-	16	-	17	76
Unknown	-	1	13	-	14	6	6	31	1	44	4	7	13	3	27	2	3	9	-	14	1	-	5	-	6	105
Total Comments	57	82	280	44	463	80	137	390	73	680	66	150	350	51	617	79	201	337	73	690	71	169	475	56	771	3,221
Operations per Comment	69	67	48	105	60	61	53	41	62	48	63	51	45	116	54	73	38	46	79	51	69	46	38	101	47	51

Truckee Tahoe Airport District Operations and Community Comment Report Calendar 2019

OPERATIONS																	
	2019																
	Jan	Feb	Mar	Q1	Apr	May	Jun	Q2	Jul	Aug	Sep	Q3	Oct	Nov	Dec	Q4	Total
Operations Detail																	
Piston Single	1,104	303	920	2,327	933	961	2,012	3,906	2,781	2,549	1,670	7,000	1,740	1,282	520	3,542	16,775
Piston Twin	136	26	107	269	64	53	119	236	156	219	153	528	130	68	38	236	1,269
Turbo Prop	604	250	643	1,497	373	296	553	1,222	939	1,050	630	2,619	336	295	377	1,008	6,346
Jet < 12,499 lbs	75	26	84	185	62	48	80	190	155	182	140	477	60	40	46	146	998
Jet 12,500-19,999 lbs	126	46	106	278	83	70	170	323	326	274	163	763	115	55	124	294	1,658
Jet 20,000-49,999 lbs	94	18	53	165	52	72	169	293	328	300	181	809	90	51	96	237	1,504
Jet > 50,000 lbs	22	-	8	30	4	7	41	52	69	60	29	158	8	6	16	30	270
Helicopter	51	35	94	180	80	94	116	290	90	162	117	369	69	43	34	146	985
Total Powered Aircraft	2,212	704	2,015	4,931	1,651	1,601	3,260	6,512	4,844	4,796	3,083	12,723	2,548	1,840	1,251	5,639	29,805
Gliders	-	-	-	-	-	96	1,110	1,206	2,280	2,044	1,044	5,368	-	-	-	-	6,574
Total Operations	2,212	704	2,015	4,931	1,651	1,697	4,370	7,718	7,124	6,840	4,127	18,091	2,548	1,840	1,251	5,639	36,379

COMMENTS																	
	2019																
	Jan	Feb	Mar	Q1	Apr	May	Jun	Q2	Jul	Aug	Sep	Q3	Oct	Nov	Dec	Q4	Total
Comment Location																	
Alder	-	-	-	-	-	1	6	7	25	11	2	38	-	-	-	-	45
Glenshire	1	-	3	4	5	2	7	14	28	14	19	61	-	-	-	-	79
Martis Valley Estates	1	1	3	5	9	4	14	27	16	11	10	37	-	1	-	1	70
Northstar/ Martis	-	-	2	2	2	-	3	5	1	3	-	4	2	-	-	2	13
Olympic Heights	19	2	24	45	19	8	20	47	69	81	35	185	26	11	-	37	314
Prosser Lakeview	3	1	-	4	9	1	2	12	16	33	-	49	-	-	-	-	65
Russell Valley	1	-	-	1	-	-	-	-	-	3	1	4	-	2	-	2	7
Sierra Meadows	7	-	2	9	-	3	3	6	16	1	3	20	3	1	-	4	39
Tahoe Basin	-	-	-	-	1	1	1	3	-	1	-	1	-	-	-	-	4
Tahoe Donner	-	-	1	1	3	15	27	45	26	26	15	67	2	2	2	6	119
Unknown/Other	-	-	-	-	2	-	1	3	4	-	5	9	2	2	-	4	16
Total Comments	32	4	35	71	50	35	84	169	201	184	90	475	35	19	2	56	771
Comment Type																	
Piston	24	2	22	48	28	25	35	88	95	101	44	240	31	17	-	48	424
Turbine	4	1	9	14	8	4	12	24	39	28	13	80	2	-	1	3	121
Jet	4	1	2	7	14	6	37	57	62	53	19	134	2	2	1	5	203
Helo	-	-	1	1	-	-	-	-	4	2	10	16	-	-	-	-	17
Unknown	-	-	1	1	-	-	-	-	1	-	4	5	-	-	-	-	6
Total Comments	32	4	35	71	50	35	84	169	201	184	90	475	35	19	2	56	771
Operations per Comment				69				46				38				101	47