








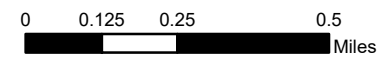
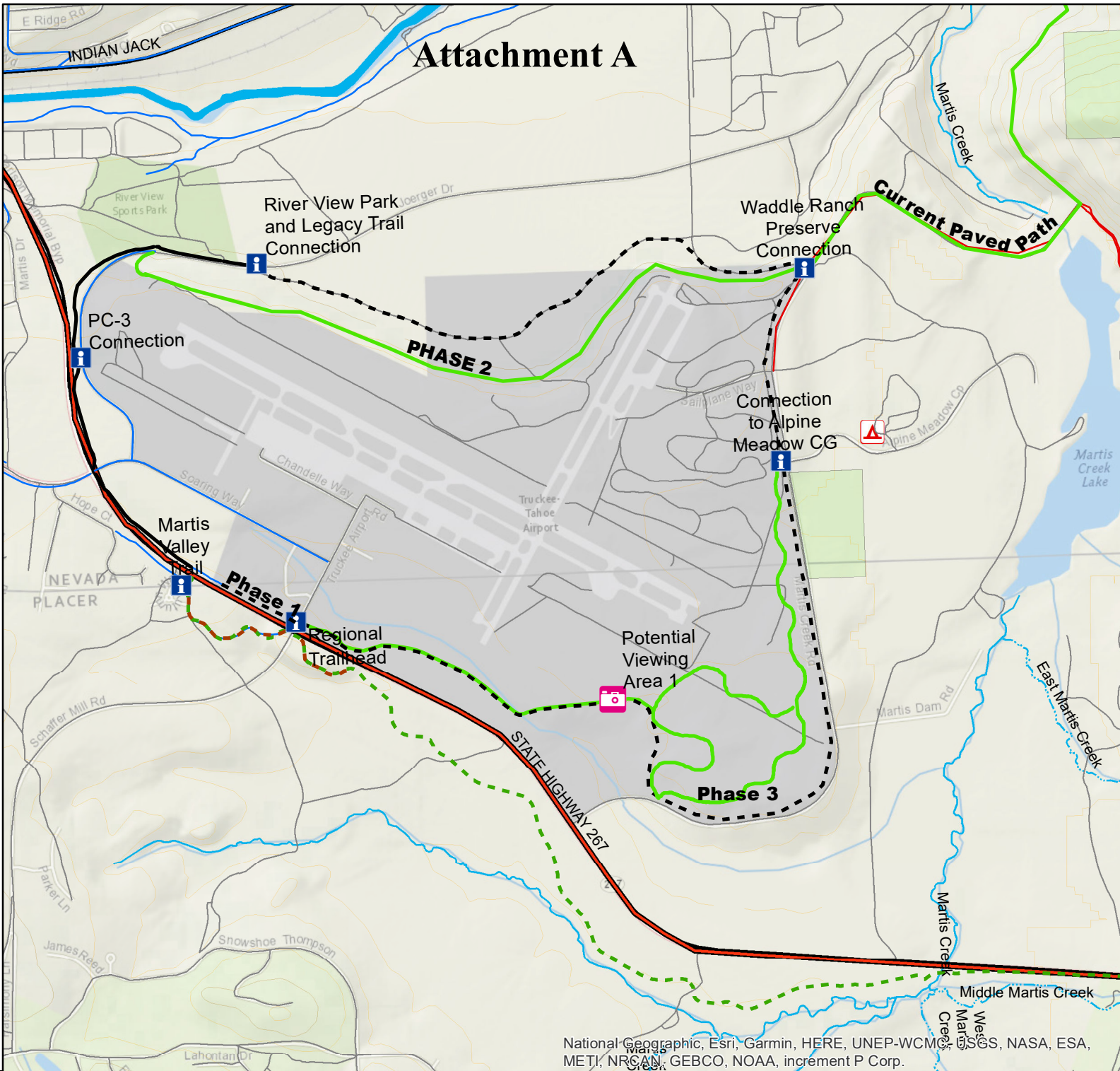
Attachment A



Truckee Airport District Trail Development Attachment A

Map Features

-  Trailhead or Connection
-  Potential Viewing Area 1
-  Paved Surface Trail
-  PC-3 Paved Surface Trail
-  Soft Surface Nature Trail
- Phase 1 = 1,032 ft paved path**
- Phase 2 = 9,341 ft dirt trail**
- Phase 3 = 15,489 ft dirt trail**
-  Current Martis Valley Trail
-  Martis Valley Trail



Map produced by TTF Program Director 2020

National Geographic, Esri, Garmin, HERE, UNEP-WCMC, USGS, NASA, ESA, METI, NRCAN, GEBCO, NOAA, increment P Corp.