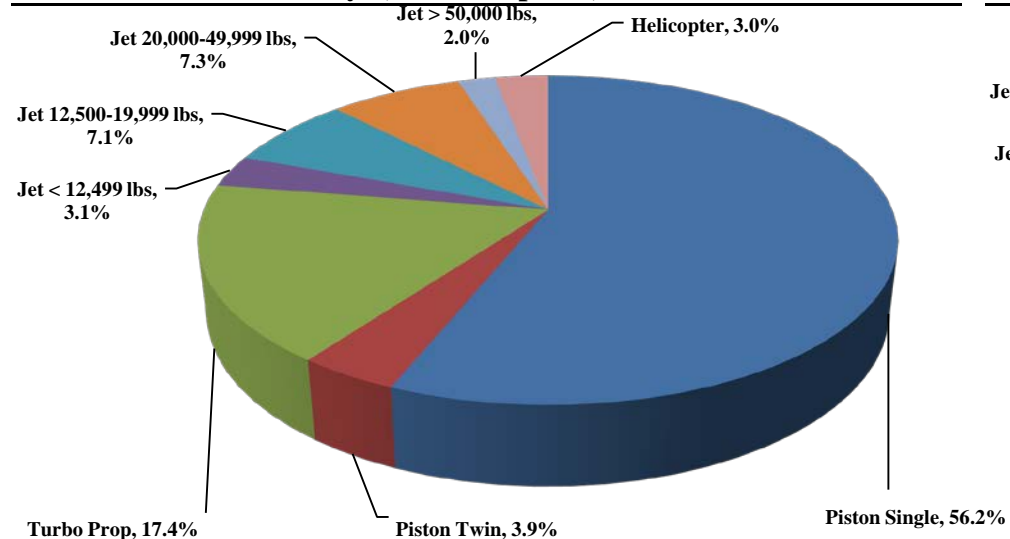




# TRUCKEE TAHOE AIRPORT DISTRICT Operations and Community Comment Report as of 09/30/20

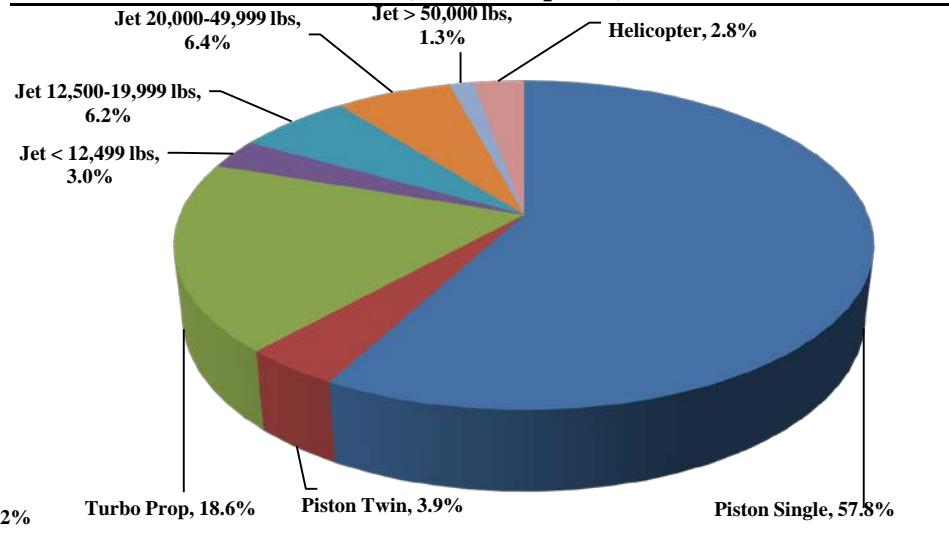


**Current Quarter | Operations**  
July 1, 2020 - Sept. 30, 2020



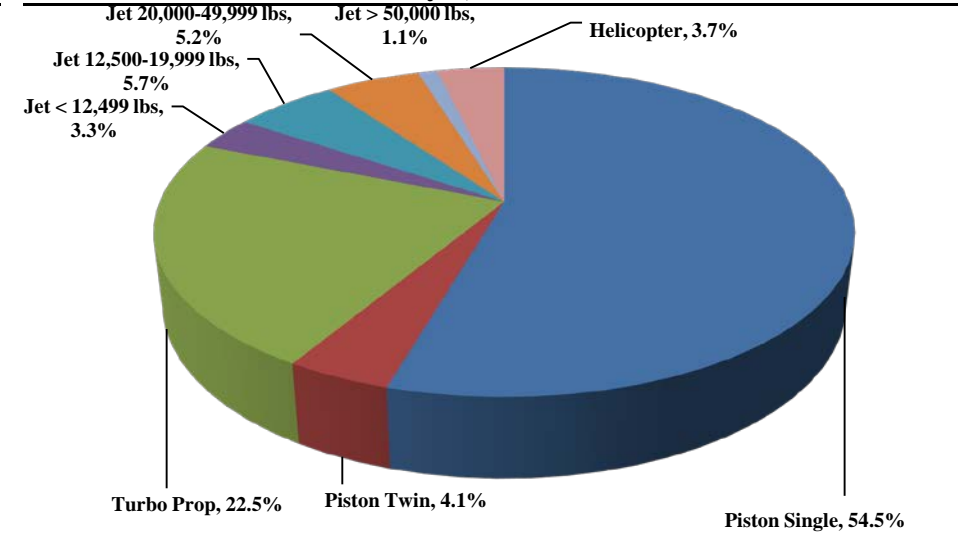
Total Powered Aircraft 11,007

**Year-Over-Year | Operations**  
October 1, 2019 - Sept. 30, 2020



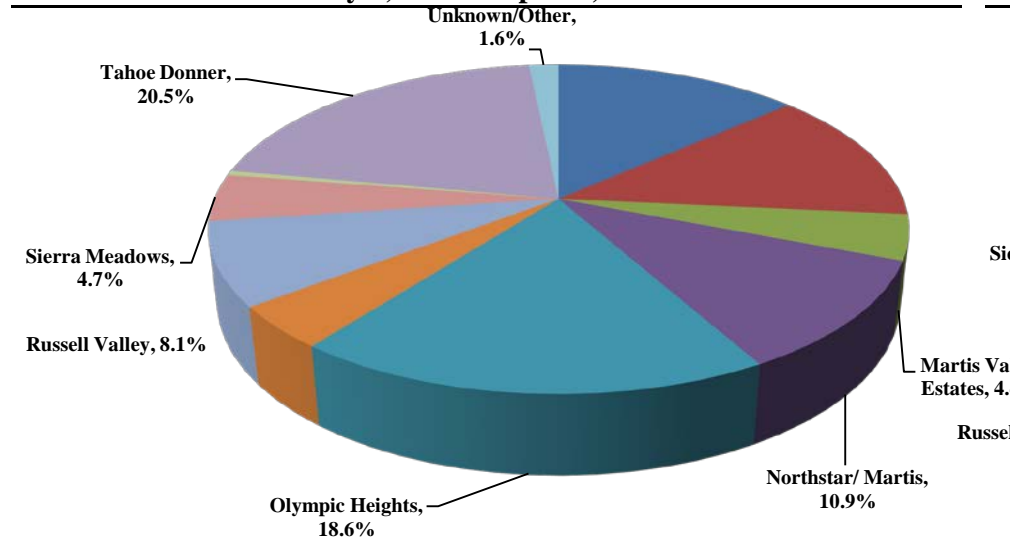
Total Powered Aircraft 28,218

**Historic | Operations**  
January 1, 2016 - Present



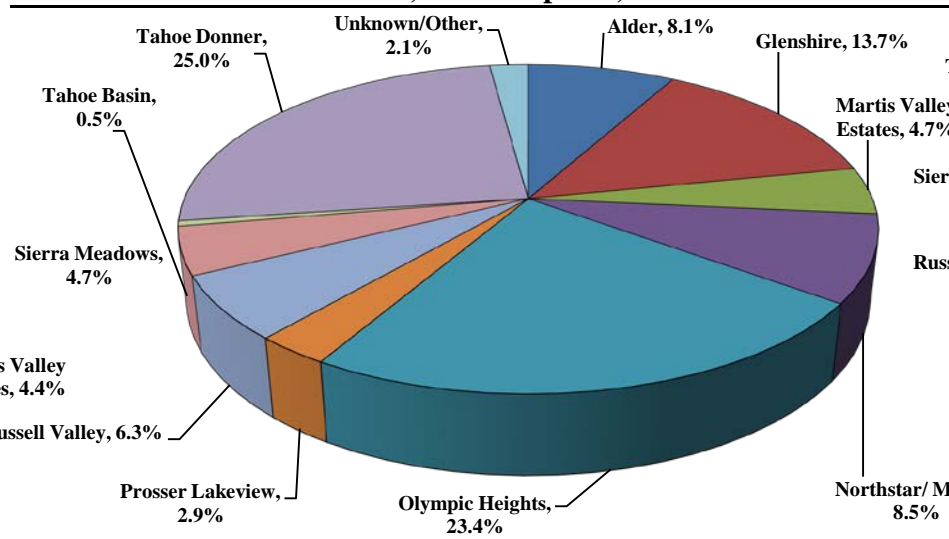
Total Powered Aircraft 137,077

**Current Quarter | Comments**  
July 1, 2020 - Sept. 30, 2020



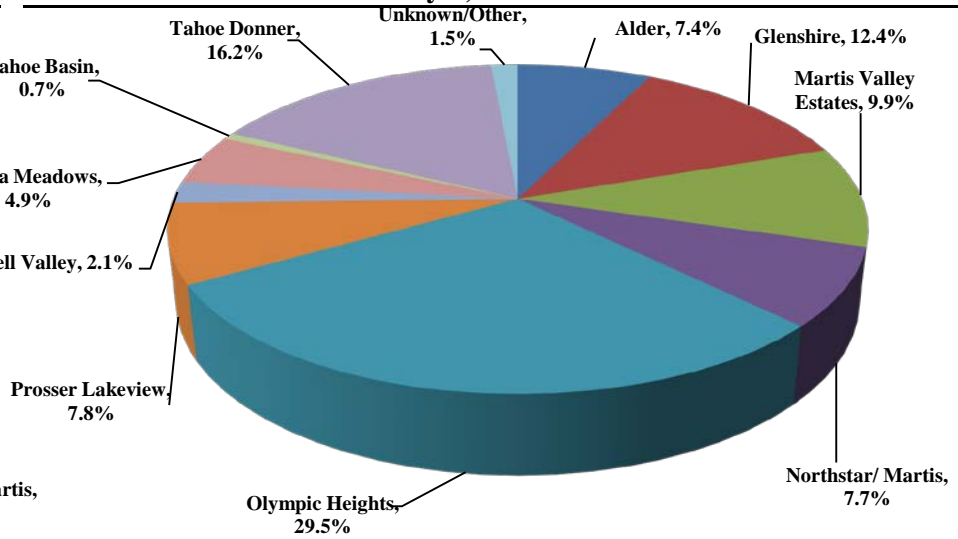
Total Comments 430  
Operations / Comment 33

**Year-Over-Year | Comments**  
October 1, 2019 - Sept. 30, 2020



Total Comments 751  
Operations / Comment 43

**Historic | Comments**  
January 1, 2016 - Present



Total Comments 3,453  
Operations / Comment 47

**Notes**

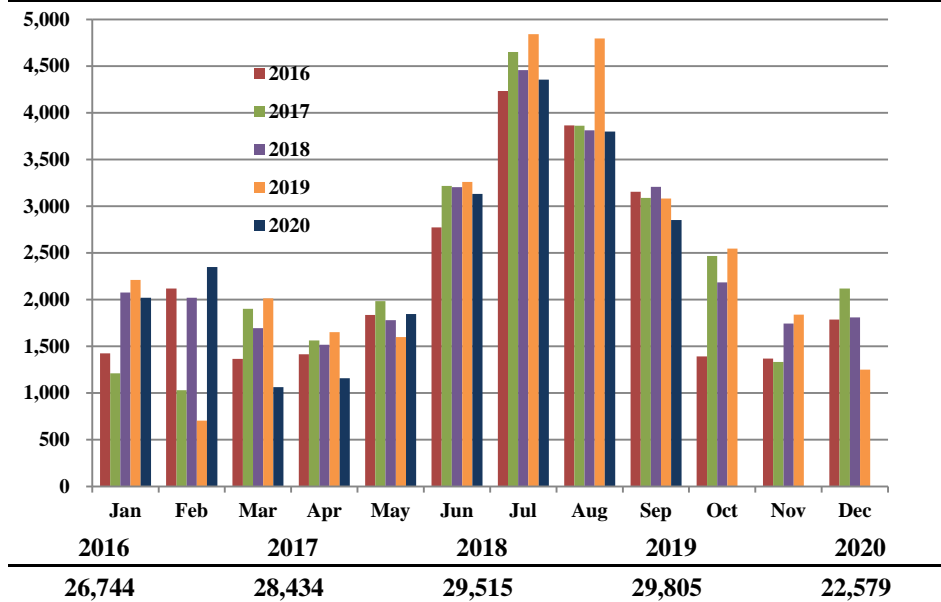
Operations graphs above use Total Powered Aircraft. Glider operations are not included.  
**2018** - Launched Community Hotline & Plane Noise with Smart Receipt  
**2017** - Residential Zones changed to match minimum of 1% of total comments  
**2015** - Jet > 50,000 lbs category added in Q1      **2014** - TTAD launched 'Report Noise' link in website



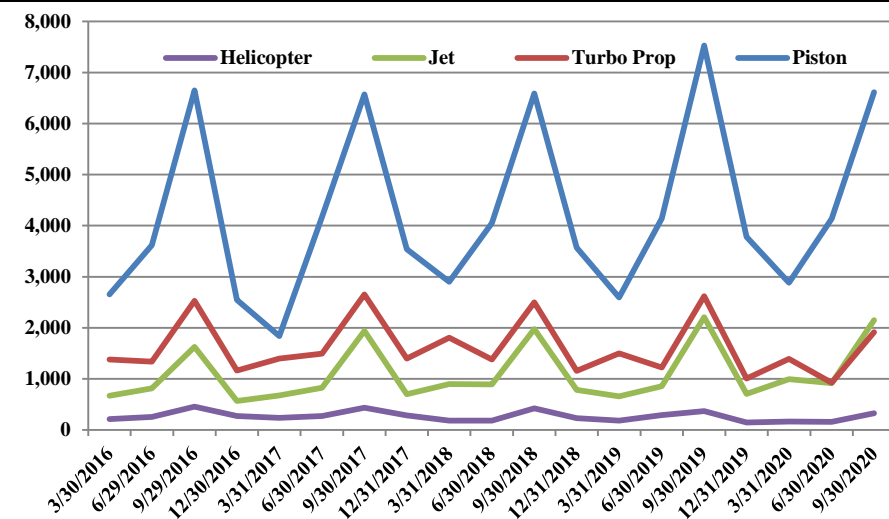
# TRUCKEE TAHOE AIRPORT DISTRICT Operations and Community Comment Report as of 09/30/20



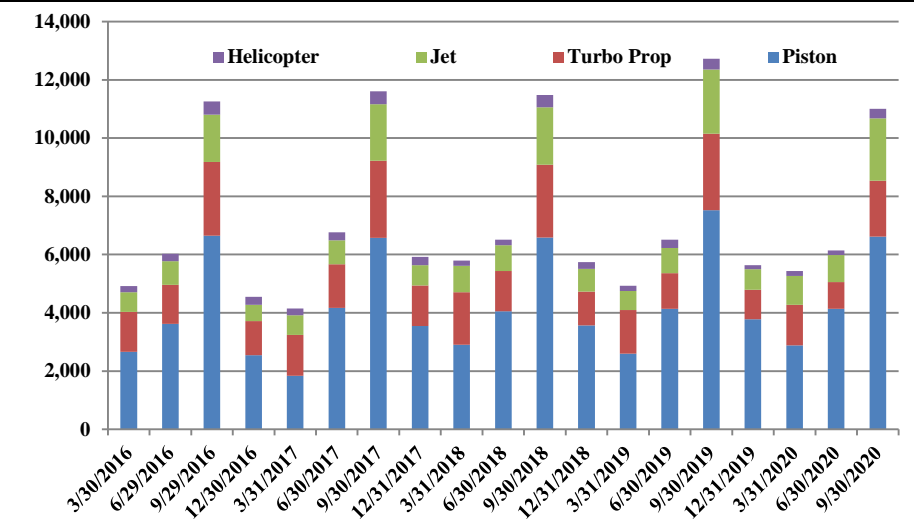
Operations | by Month by Year  
January 1, 2016 - Present



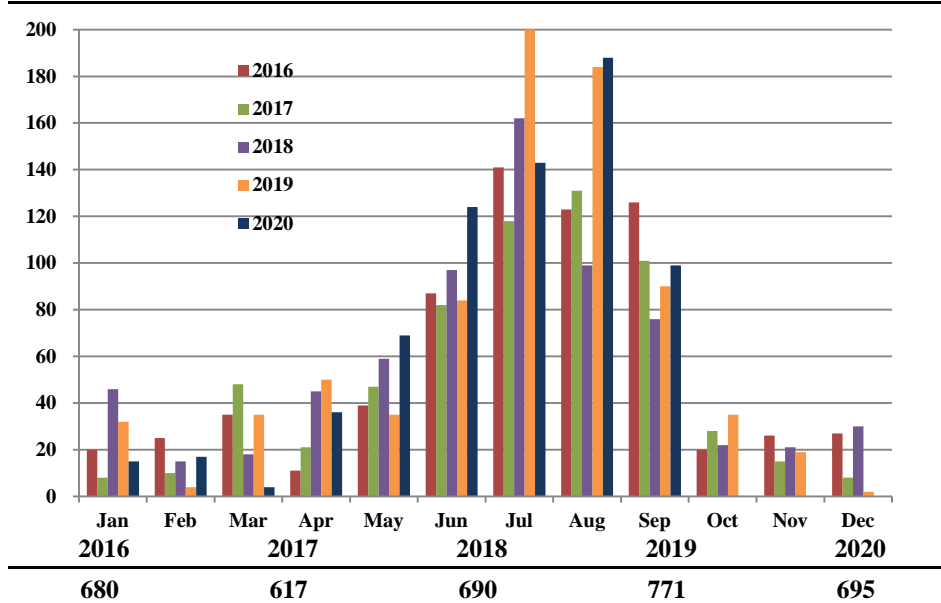
Operations | by Type by Quarter  
January 1, 2016 - Present



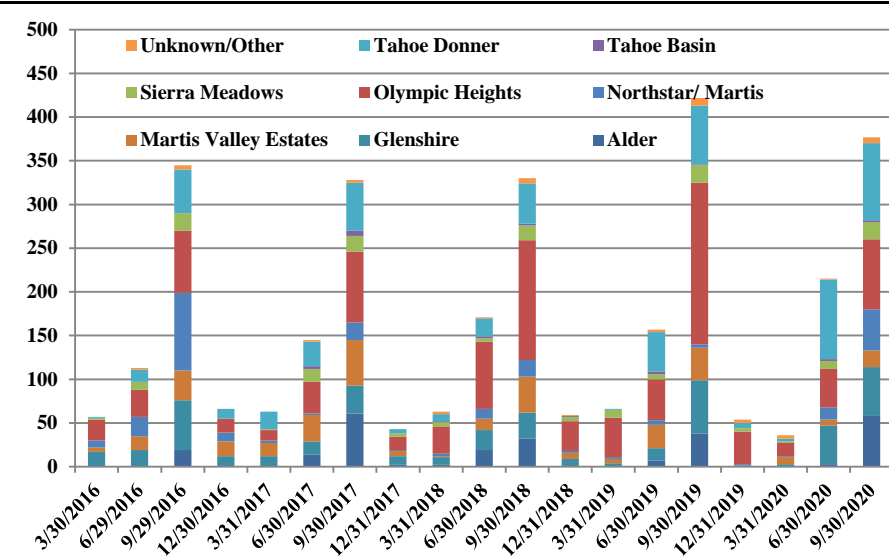
Operations | Mix by Type by Quarter  
January 1, 2016 - Present



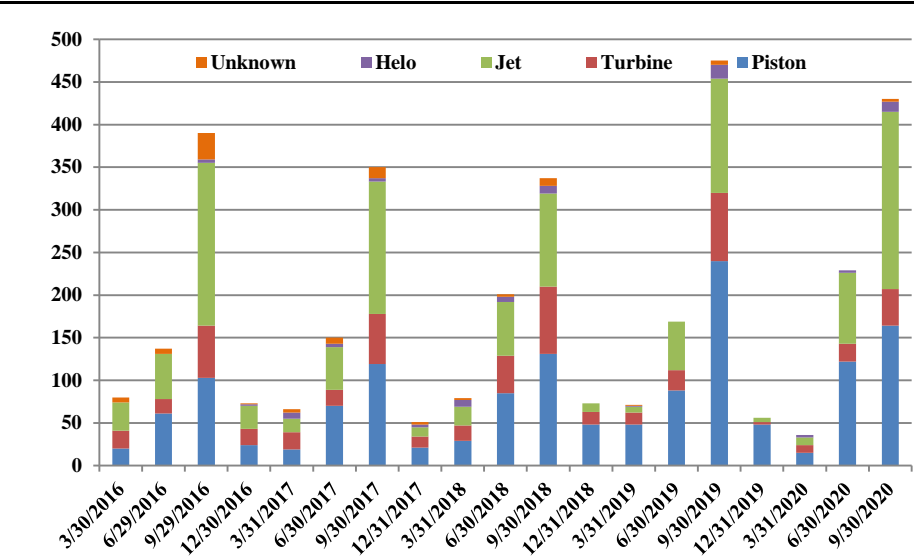
Comments | by Month by Year  
January 1, 2016 - Present



Comments | by Locale by Quarter  
January 1, 2016 - Present



Comments | by Type by Quarter  
January 1, 2016 - Present



### Notes

Operations graphs above use Total Powered Aircraft. Glider operations are not included.  
 2018 - Launched Community Hotline & Plane Noise with Smart Receipt  
 2017 - Residential Zones changed to match minimum of 1% of total comments  
 2015 - Jet > 50,000 lbs category added in Q1  
 2014 - TTAD launched 'Report Noise' link in website



## Truckee Tahoe Airport District Operations and Community Comment Report as of 09/30/20



	OPERATIONS										Year over Year				Notes
	2019				2020				difference	%	10/1/18-09/30/19	10/1/19-09/30/20	difference	%	
	Jul	Aug	Sep	Q3	Jul	Aug	Sep	Q3			10/1/18-09/30/19	10/1/19-09/30/20			
<b>Operations Detail</b>															
Piston Single	2,781	2,549	1,670	7,000	2,481	2,175	1,527	6,183	(817)	(11.67%)	16,658	16,323	(335)	(2.01%)	
Piston Twin	156	219	153	528	168	144	121	433	(95)	(17.99%)	1,180	1,089	(91)	(7.71%)	
Turbo Prop	939	1,050	630	2,619	749	592	576	1,917	(702)	(26.80%)	6,492	5,242	(1,250)	(19.25%)	
Jet < 12,499 lbs	155	182	140	477	115	134	94	343	(134)	(28.09%)	1,011	835	(176)	(17.41%)	
Jet 12,500-19,999 lbs	326	274	163	763	321	255	202	778	15	1.97%	1,652	1,755	103	6.23%	
Jet 20,000-49,999 lbs	328	300	181	809	339	270	194	803	(6)	(0.74%)	1,549	1,805	256	16.53%	
Jet > 50,000 lbs	69	60	29	158	74	89	61	224	66	41.77%	294	374	80	27.21%	
Helicopter	90	162	117	369	108	141	77	326	(43)	(11.65%)	1,068	795	(273)	(25.56%)	
Total Powered Aircraft	4,844	4,796	3,083	12,723	4,355	3,800	2,852	11,007	(1,716)	(13.49%)	29,904	28,218	(1,686)	(5.64%)	
Gliders	2,280	2,044	1,044	5,368	1,548	1,440	204	3,192	(2,176)	(40.54%)	6,574	3,976	(2,598)	(39.52%)	
Total Operations	7,124	6,840	4,127	18,091	5,903	5,240	3,056	14,199	(3,892)	(21.51%)	36,478	32,194	(4,284)	(11.74%)	

	COMMENTS										Year over Year				Notes						
	2019				2020				difference	%	10/1/18-09/30/19	10/1/19-09/30/20	difference	%							
	Jul	Aug	Sep	Q3	Jul	Aug	Sep	Q3			10/1/18-09/30/19	10/1/19-09/30/20									
<b>Comment Location</b>																					
Alder	25	11	2	38	22	32	4	58	20	52.63%	45	61	16	35.56%							
Glenshire	28	14	19	61	23	22	11	56	(5)	(8.20%)	88	103	15	17.05%							
Martis Valley Estates	16	11	10	37	5	12	2	19	(18)	(48.65%)	76	35	(41)	(53.95%)							
Northstar/ Martis	1	3	-	4	17	22	8	47	43	1075.00%	13	64	51	392.31%							
Olympic Heights	69	81	35	185	14	31	35	80	(105)	(56.76%)	311	176	(135)	(43.41%)							
Prosser Lakeview	16	33	-	49	5	7	6	18	(31)	(63.27%)	74	22	(52)	(70.27%)							
Russell Valley	-	3	1	4	1	16	18	35	31	775.00%	10	47	37	370.00%							
Sierra Meadows	16	1	3	20	5	8	7	20	-	0.00%	40	35	(5)	(12.50%)							
Tahoe Basin	-	1	-	1	1	1	-	2	1	100.00%	5	4	(1)	(20.00%)							
Tahoe Donner	26	26	15	67	47	33	8	88	21	31.34%	113	188	75	66.37%							
Unknown/Other	4	-	5	9	3	4	-	7	(2)	(22.22%)	13	16	3	23.08%							
Total Comments	201	184	90	475	143	188	99	430	(45)	(9.47%)	788	751	(37)	(4.70%)	-						
<b>Comment Type</b>																					
Piston	95	101	44	240	54	55	55	164	(76)	(31.67%)	424	349	(75)	(17.69%)							
Turbine	39	28	13	80	16	19	8	43	(37)	(46.25%)	133	76	(57)	(42.86%)							
Jet	62	53	19	134	70	108	30	208	74	55.22%	208	305	97	46.63%							
Helo	4	2	10	16	3	4	5	12	(4)	(25.00%)	17	18	1	5.88%							
Unknown	1	-	4	5	-	2	1	3	(2)	(40.00%)	6	3	(3)	(50.00%)							
Total Comments	201	184	90	475	143	188	99	430	(45)	(9.47%)	788	751	(37)	(4.70%)	-						
<b>Operations per Comment</b>	38.1				33.0				(5.1)		(13.30%)		46.3		42.9		(3.4)		(7.40%)		-