

**Legend**

- County Boundary Line
- Airport Influence Area. Within the red lined area it is typical to see and hear aircraft as they arrive and depart.
- Takeoff and Landing Maneuvering Area. Within the blue area it is typical to see aircraft maneuvering for arrival and departure. In this area aircraft are making steep turns, climbing, descending, flying low under full power or low power.
- Mountainous Terrain. Within the red shaded area is mountainous terrain which is not always suitable for departure climb out. Some capable aircraft may use this area for approach and departure.

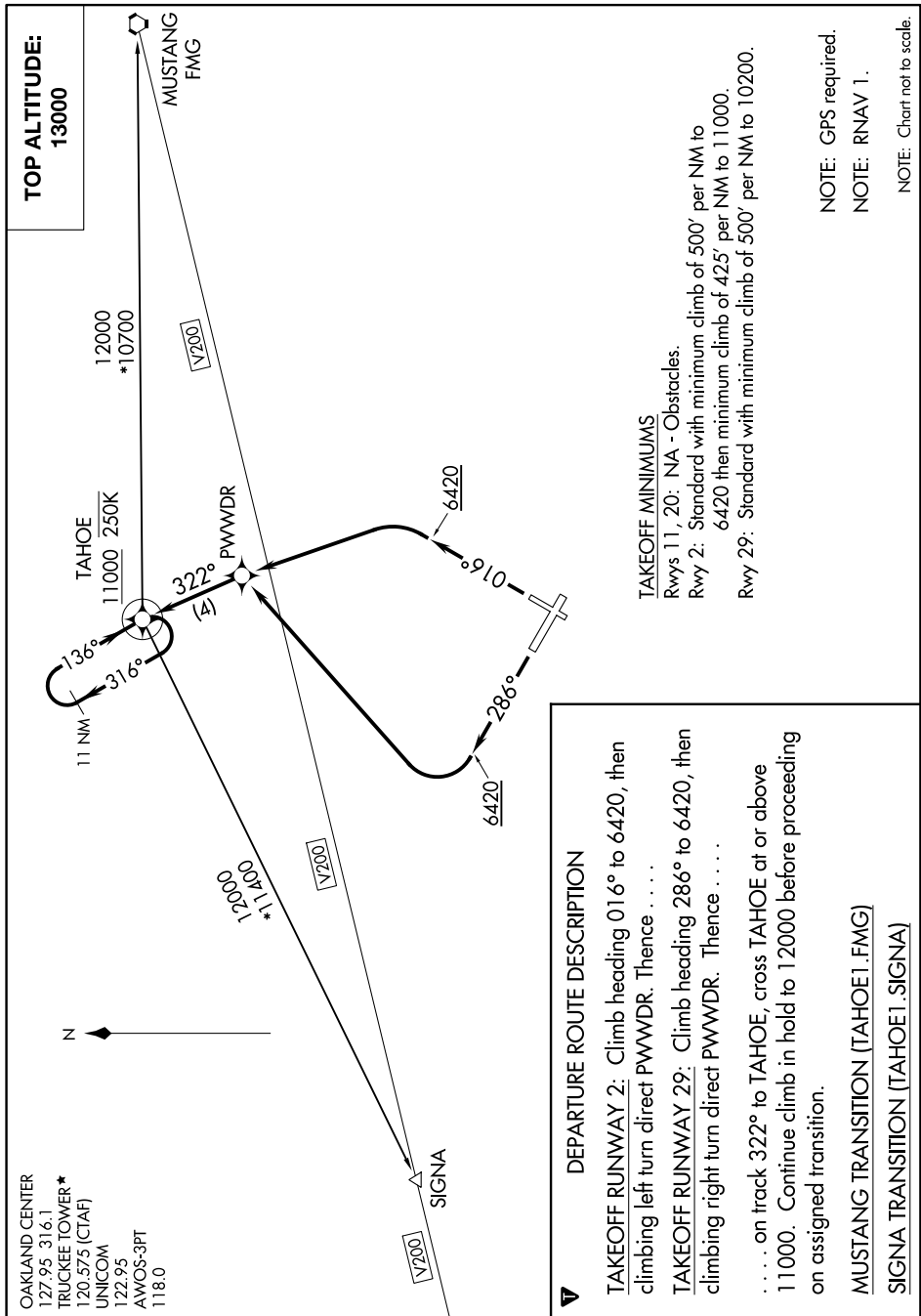
Note: Aircraft are encouraged to fly over the highway areas while arriving and departing.

Map Used From:  
 Truckee Tahoe Airport  
 Land Use Compatibility Plan  
 (Adopted October 27, 2016)

**Aircraft Operations Area**  
 Truckee Tahoe Airport



SW-2, 23 APR 2020 to 21 MAY 2020



SW-2, 23 APR 2020 to 21 MAY 2020

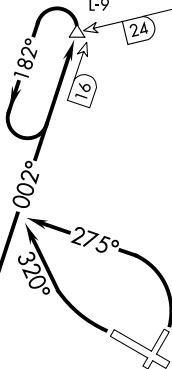
OAKLAND CENTER  
127.95 316.1  
TRUCKEE TOWER ★  
120.575 (CTAF)  
UNICOM  
122.95  
AWOS-3PT  
118.0

TRUCK  
N39°26.26'  
W120°09.71'  
11500  
L-9

V200-392

R-241

MUSTANG  
117.9 FMG  
Chan 126



TAKEOFF MINIMUMS

Rwys 11, 20: NA - Obstacles.

Rwy 2: Standard with minimum climb of 415' per NM to 11500, or 3300-3 for climb in visual conditions.

Rwy 29: Standard with minimum climb of 500' per NM to 11500, or 3300-3 for climb in visual conditions.

SQUAW VALLEY  
113.2 SWR  
Chan 79

TAKEOFF OBSTACLE NOTES

Rwy 2: Trees beginning 2' from DER, 288' left of centerline, up to 60' AGL/5939' MSL.

Trees beginning 420' from DER, 312' right of centerline, up to 60' AGL/5939' MSL.

Rwy 29: Trees beginning 679' from DER, 507' left of centerline, up to 60' AGL/5997' MSL.

Trees beginning 116' from DER, 412' right of centerline, up to 60' AGL/5971' MSL.

NOTE: Chart not to scale.

DEPARTURE ROUTE DESCRIPTION

TAKEOFF RUNWAY 2: Climbing left turn to 11500 on heading 275° and SWR R-002 to TRUCK INT, thence. . . , or for climb in visual conditions cross Truckee-Tahoe Airport heading 290° at or above 9100, then proceed on SWR R-002 to TRUCK INT. When executing VCOA, notify ATC prior to departure. Thence. . .

TAKEOFF RUNWAY 29: Climbing right turn to 11500 on heading 320° and SWR R-002 to TRUCK INT, thence. . . , or for climb in visual conditions cross Truckee-Tahoe Airport heading 290° at or above 9100, then proceed on SWR R-002 to TRUCK INT. When executing VCOA, notify ATC prior to departure. thence. . .

. . . continue climb in TRUCK INT holding pattern to cross TRUCK INT at or above 11500 before proceeding on course.

SW-2, 23 APR 2020 to 21 MAY 2020

SW-2, 23 APR 2020 to 21 MAY 2020

# RNAV (GPS) RWY 11

TRUCKEE-TAHOE (TRK)

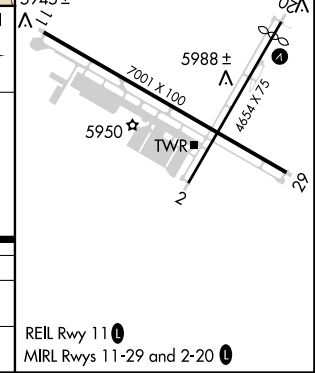
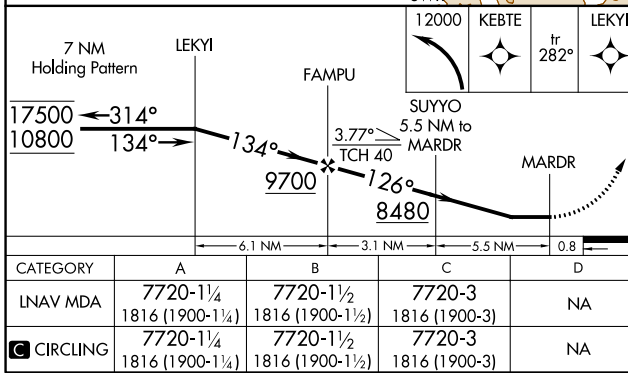
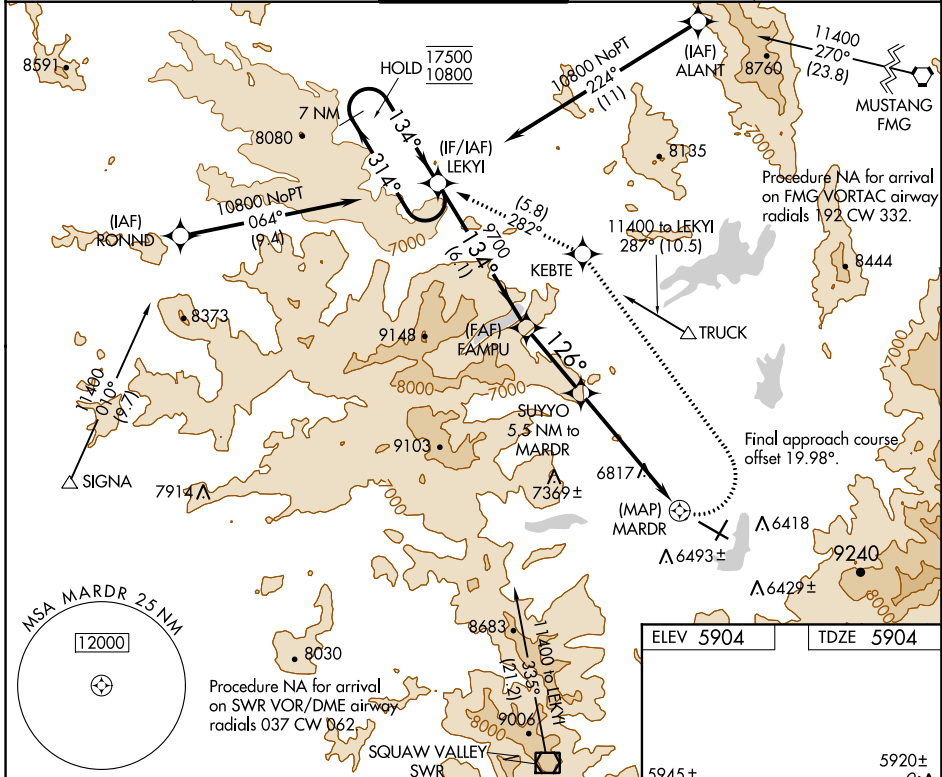
APP CRS	Rwy Idg	<b>7001</b>
<b>126°</b>	TDZE	<b>5904</b>
	Apt Elev	<b>5904</b>

RNP APCH.

▼ Circling NA for Cat C south of Rwy 29 and east of Rwy 2.  
▲ Procedure NA at night. Rwy 11 helicopter visibility reduction below 1 SM NA. When local altimeter setting not received, procedure NA.  
❄ -13°C

MISSED APPROACH: (Do not exceed 220K until KEBTE) Climbing left turn to 12000 direct KEBTE and track 282° to LEKYI and hold, continue climb-in-hold 12000.

AWOS-3PT <b>118.0</b>	OAKLAND CENTER <b>127.95 316.1</b>	TRUCKEE TOWER * <b>120.575 (CTAF) 0</b>	GND CON <b>118.3</b>	UNICOM <b>122.95</b>
--------------------------	---------------------------------------	--	-------------------------	-------------------------



CATEGORY	A	B	C	D
LNVA MDA	7720-1¼ 1816 (1900-1¼)	7720-1½ 1816 (1900-1½)	7720-3 1816 (1900-3)	NA
<span style="border: 1px solid black; padding: 2px;">C</span> CIRCLING	7720-1¼ 1816 (1900-1¼)	7720-1½ 1816 (1900-1½)	7720-3 1816 (1900-3)	NA

REIL Rwy 11 0  
MIRL Rwy 11-29 and 2-20 0

SW-2, 23 APR 2020 to 21 MAY 2020

SW-2, 23 APR 2020 to 21 MAY 2020

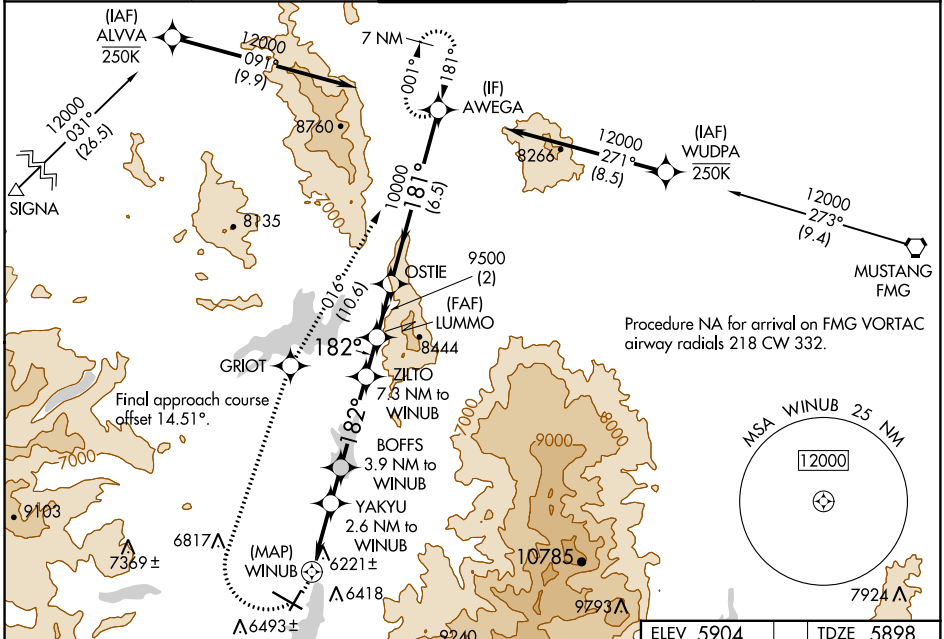
WAAS CH <b>87135</b> <b>W20A</b>	APP CRS <b>182°</b>	Rwy Idg TDZE Apt Elev	<b>4539</b> <b>5898</b> <b>5904</b>
--	------------------------	-----------------------------	---

# RNAV (GPS) RWY 20

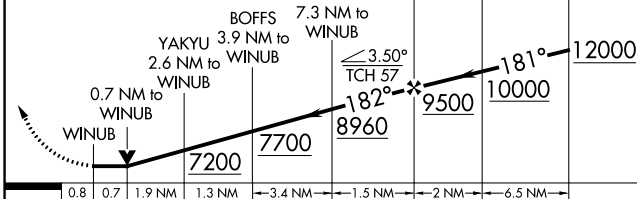
TRUCKEE-TAHOE (TRK)

RNP APCH.	MISSED APPROACH: (Do not exceed 200K until GRIOT) Climbing right turn to 12000 direct GRIOT and on track 016° to AWEGA and hold, continue climb-in-hold to 12000. *Missed approach requires minimum climb of 270 feet per NM to 7700.
<p><b>▼</b> Circling to Rwy 2, 11, 29 NA at night. Circling NA for Cat C south of Rwy 29 and east of Rwy 2. Rwy 20 helicopter visibility reduction below 3/4 SM NA. When local altimeter setting not received, procedure NA.</p>	

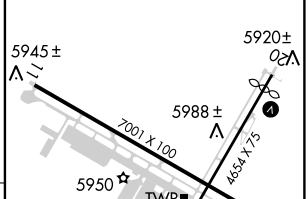
AWOS-3PT <b>118.0</b>	OAKLAND CENTER <b>127.95 316.1</b>	TRUCKEE TOWER * <b>120.575</b> (CTAF) <b>0</b>	GND CON <b>118.3</b>	UNICOM <b>122.95</b>
--------------------------	---------------------------------------	---	-------------------------	-------------------------



12000	GRIOT	tr 016°	AWEGA	VGSI and descent angles not coincident (VGSI Angle 3.50/TCH 25).
-------	-------	---------	-------	--



ELEV 5904	TDZE 5898
-----------	-----------



CATEGORY	A	B	C	D
LP MDA*	6480-1 582 (600-1)	6480-1 5/4 582 (600-1 5/4)	6480-2 1/2 582 (600-2 1/2)	NA
LP MDA	6780-1 1/4 882 (900-1 1/4)	6780-2 1/2 882 (900-2 1/2)	6780-3 882 (900-3)	NA
LP MDA	7120-1 1/4 1222 (1300-1 1/4)	7120-1 1/2 1222 (1300-1 1/2)	7120-3 1222 (1300-3)	NA
CIRCLING	7120-1 1/4 1216 (1300-1 1/4)	7220-1 1/2 1316 (1400-1 1/2)	7700-3 1796 (1800-3)	NA

REIL Rwy 11 <b>0</b>	MIRL Rwy 11-29 and 2-20 <b>0</b>
----------------------	----------------------------------

SW-2, 23 APR 2020 to 21 MAY 2020

SW-2, 23 APR 2020 to 21 MAY 2020

APP CRS <b>058°</b>	Rwy Idg TDZE Apt Elev	<b>N/A</b> <b>N/A</b> <b>5904</b>
------------------------	-----------------------------	---

# RNAV (GPS)-A

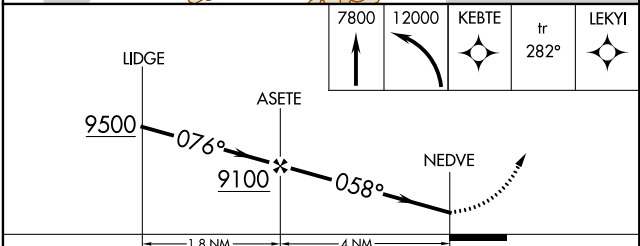
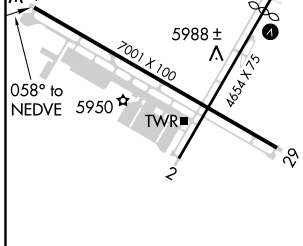
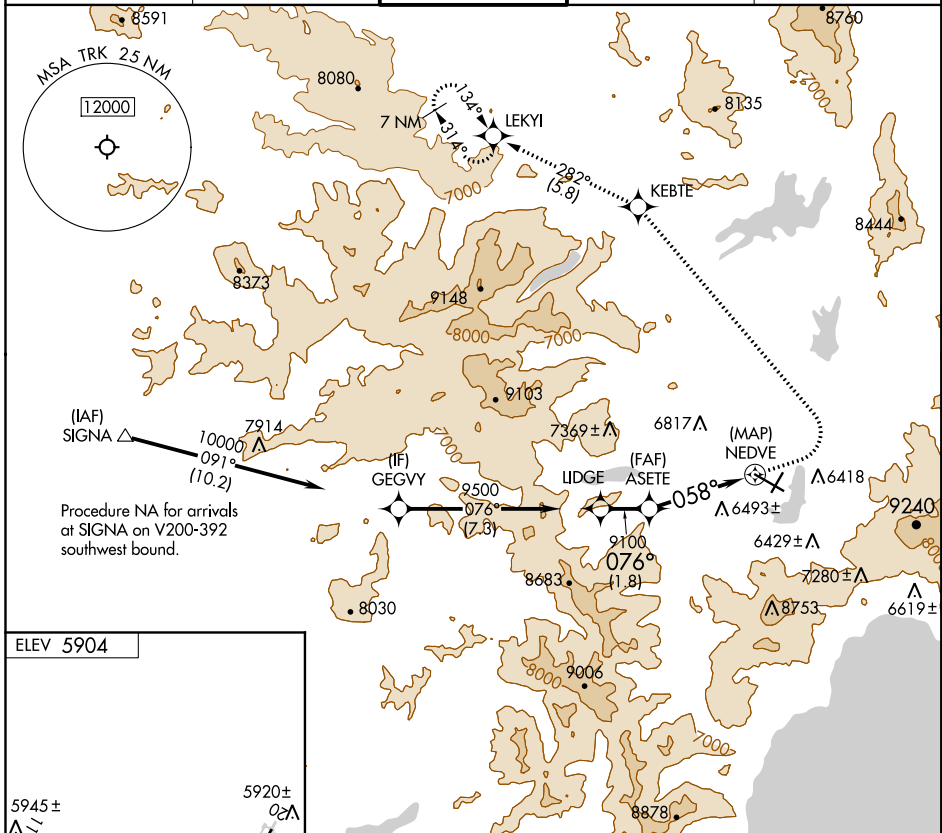
## TRUCKEE-TAHOE (TRK)

RNP APCH.

**⚠** Circling NA for Cat C south of Rwy 29 and east of Rwy 2.  
**⚠** Procedure NA at night. When local altimeter setting not received, procedure NA.  
**❄** -13°C

MISSED APPROACH: (Do not exceed 200K until KEBTE)  
 Climb to 7800 then climbing left turn to 12000 direct KEBTE and track 282° to LEKYI and hold, continue climb-in-hold 12000.

AWOS-3PT <b>118.0</b>	OAKLAND CENTER <b>127.95 316.1</b>	TRUCKEE TOWER* <b>120.575 (CTAF)</b> <b>0</b>	GND CON <b>118.3</b>	UNICOM <b>122.95</b>
--------------------------	---------------------------------------	--	-------------------------	-------------------------



CATEGORY	A	B	C	D
<b>C</b> CIRCLING	7500-1¼ 1596 (1600-1¼)	7500-1½ 1596 (1600-1½)	7700-3 1796 (1800-3)	NA

SW-2, 23 APR 2020 to 21 MAY 2020

SW-2, 23 APR 2020 to 21 MAY 2020