

SAFETY PLAN NOTES:

- CONTRACTOR IS RESPONSIBLE FOR MAINTAINING THE SECURITY, SAFETY AND CLEANLINESS OF THE CONTRACTOR'S STORAGE AND WORK AREA AT ALL TIMES.
- CONTRACTOR SHALL MAINTAIN HAUL ROAD AND PAVED SURFACES CLEAR OF DEBRIS AT ALL TIMES. RUNWAY AND TAXIWAYS SHALL BE MAINTAINED BROOM CLEAN.
- LIGHTED BARRICADES SHALL BE INSTALLED IN FRONT OF ALL OPEN TRENCHES. NO TRENCHES SHALL BE ALLOWED TO REMAIN OPEN OVERNIGHT.
- RUNWAY CLOSURE WILL BE REQUIRED FOR ANY WORK PERFORMED WITHIN THE RUNWAY SAFETY AREA (150' WIDE AREA CENTERED ON THE RUNWAY CENTERLINE).
- PRIOR TO PHASE 2-2 BEGINNING AND DURING OPERATIONS WHEN MATERIAL, EQUIPMENT OR PERSONNEL IS BEING HAULED TO OR FROM CONTRACTOR'S STORAGE SITE OR WORK AREA ACROSS AN ACTIVE TAXIWAY OR APRON, THE OWNER WILL PROVIDE A QUALIFIED FLAGMAN TO MONITOR THE TOWER GROUND CONTROL FREQUENCY 118.30 MHZ AND ESCORT THE CONTRACTOR. THE AIRPORT'S FLAGMAN WILL BE STATIONED ADJACENT TO THE INTERSECTION OF TAXIWAY C AND TAXIWAY A SUCH THAT THEY CAN CONTROL CONTRACTORS VEHICLES CROSSING THE APRON.
- CONTRACTOR SHALL ERECT & MAINTAIN LIGHTED BARRICADES FURNISHED BY THE AIRPORT AT THE BOUNDARY OF THE WORK AREA TO KEEP AIRCRAFT FROM ENTERING THE CONTRACTOR'S WORK AREAS AND THE CONTRACTOR'S PERSONNEL & EQUIPMENT FROM OCCUPYING ANY OF THE AREAS OPEN FOR AIRCRAFT OPERATIONS. CONTRACTOR SHALL PROVIDE BARRICADE PLAN TWO WEEKS BEFORE START OF EACH PHASE OF CONSTRUCTION.
- CONTRACTOR SHALL COVER SIGNS TO CLOSED FACILITIES AS INDICATED ON THE CLOSED FACILITY SIGNAGE TABLE ON THIS SHEET. SIGNS PANELS SHALL BE COVERED SUCH THAT THE PANEL IS NOT VISIBLE DURING DAY OR NIGHT OPERATIONS. COVERS SHALL BE SECURED TO SIGN TO RESIST PROP BLAST AND WEATHER CONDITIONS. ALL SIGN COVERS SHALL BE APPROVED BY RESIDENT ENGINEER.
- CONTRACTOR SHALL VERIFY LOCATION AND PROTECT EXISTING UTILITIES.
- SHOULD CONTRACTOR ENCOUNTER & DAMAGE A WATERLINE ON THE AIRPORT HE SHALL IMMEDIATELY NOTIFY THE LOCAL FIRE DEPARTMENT AND THE TRUCKEE TAHOE AIRPORT DISTRICT.
- IN CASE OF AN AIRCRAFT EMERGENCY THE AREA AROUND THE AIRCRAFT SHALL BE EVACUATED AND NOT REENTERED BY THE CONTRACTOR WITHOUT GIVEN PERMISSION EXCEPT FOR LIFESAVING ACTIVITIES.
- ALL GATES USED BY THE CONTRACTOR SHALL REMAIN CLOSED AT ALL TIMES EXCEPT WHEN AUTHORIZED EQUIPMENT IS ACTUALLY ENTERING THE AIRPORT OR GATE IS CONTINUOUSLY GUARDED TO KEEP UNAUTHORIZED PERSONNEL AND WILDLIFE FROM ENTERING THE AIRPORT.

BARRICADE NOTES:

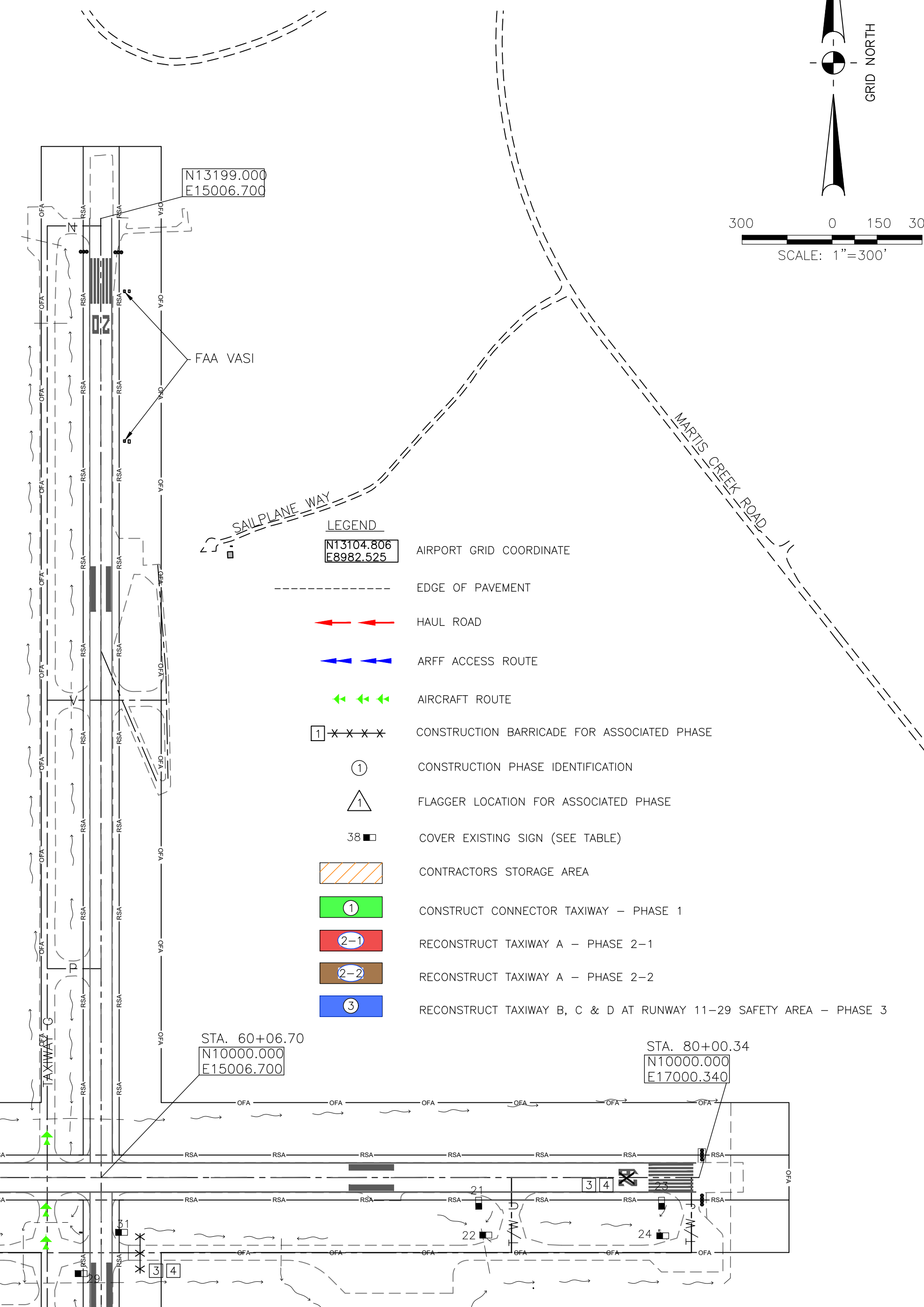
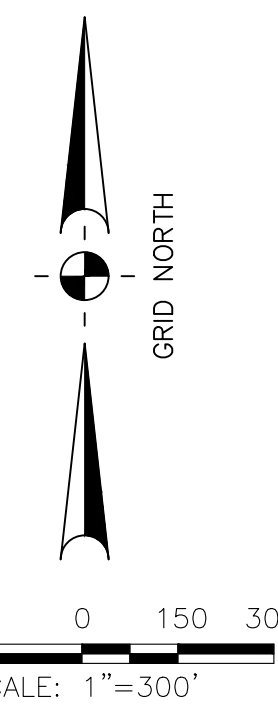
- BARRICADES WILL BE PROVIDED BY THE AIRPORT. BARRICADES SHALL BE PLASTIC, WATER-FILLED TYPE WITH RED SOLAR POWERED LIGHTS. CONTRACTOR SHALL PLACE AND MAINTAIN LIGHTS AND BARRICADES THROUGHOUT THE PROJECT.
- EACH BARRICADE SHALL HAVE 2 SOLAR-POWERED LIGHTS WITH RED LENSES EACH CONTROLLED BY PHOTOCELLS SUCH THAT THEY ARE ON CONTINUOUS AT NIGHT AND OFF BY DAY.
- BARRICADES SHALL BE SECURED IF NECESSARY TO RESIST MOVEMENT FROM JET BLAST OR PROP BLAST.
- AT THE COMPLETION OF CONSTRUCTION, ALL BARRICADES SHALL BE DRAINED OF WATER, LIGHTS DISMANTLED, AND RETURNED TO THE AIRPORT MAINTENANCE BUILDING.

CONSTRUCTION STAGING PLAN

PHASE	CONTRACTOR'S WORK	CONTRACTOR'S WORK AREA	FACILITY CLOSURE
1	CONSTRUCT NEW TAXIWAY FROM APRON TO TAXIWAY T	TAXIWAY T	TAXIWAY T AND CORNER OF TEE HANGAR APRON
2-1	RECONSTRUCT TAXIWAY A FROM TAXIWAY B TO T, TAXIWAY A FROM TAXIWAY C TO F, TAXIWAY B, D, E AND L	TAXIWAY A, B, C, D, E AND L	TAXIWAY A FROM TAXIWAY B TO T, TAXIWAY A FROM TAXIWAY C TO TAXIWAY B, D, E AND L
2-2	RECONSTRUCT TAXIWAY A FROM TAXIWAY T TO C, TAXIWAY C AND PORTION OF TAXIWAY T, REMOVE TAXIWAY C BETWEEN TAXIWAY A & APRON	TAXIWAY C, PORTION OF TAXIWAY T AND PORTION OF TAXIWAY A	TAXIWAY A FROM T TO C, TAXIWAY T NORTH OF THE APRON & TAXIWAY C
3-1	PULVERIZE ASPHALT AND BASE AT TAXIWAY B, C & D	TAXIWAY B, C & D (WITHIN RUNWAY SAFETY AREA OF R/W 11-29)	RUNWAY 11-29 AND TAXIWAYS A, B, C, D, E, F, H, AND J
3-2	CONSTRUCT BASE ROCK AND SUBBASE AT TAXIWAY B, C & D, INSTALL ELECTRICAL DUCT AT T/W B, C & D	TAXIWAY B, C & D (WITHIN RUNWAY SAFETY AREA OF R/W 11-29)	RUNWAY 11-29 AND TAXIWAYS A, B, C, D, E, F, H, AND J
3-3	AC PAVING AT TAXIWAY B, C & D	TAXIWAY B, C & D (WITHIN RUNWAY SAFETY AREA OF R/W 11-29)	RUNWAY 11-29 AND TAXIWAYS A, B, C, D, E, F, H, AND J
4	REMOVE AND REMARK TAXIWAY MARKINGS ON RW 11-29	RUNWAY 11-29	RUNWAY 11-29 AND TAXIWAYS A, B, C, D, E, F, H, AND J

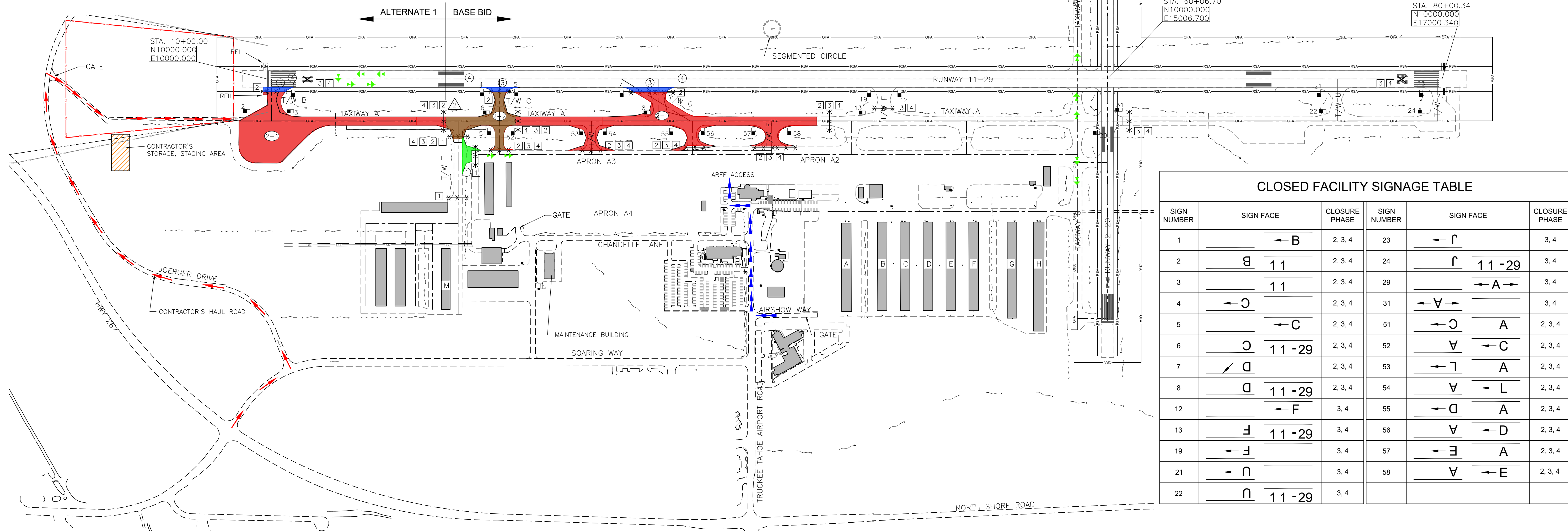
STAGING NOTES:

- OWNER SHALL FURNISH BARRICADES FOR CONTRACTOR'S USE. CONTRACTOR SHALL PLACE, MAINTAIN & REMOVE BARRICADES AS NEEDED.
- ALL BARRICADES SHALL BE PLACED 20 FT. BACK FROM THE EDGE OF AN ACTIVE RUNWAY, TAXIWAY OR APRON.
- THE CONTRACTOR SHALL PERFORM ALL WORK IN 4 DIFFERENT PHASES ON THE AIRPORT AS SHOWN IN CONSTRUCTION SCHEDULE. THE AREA INCLUDED IN EACH PHASE OF WORK IS INDICATED BY A CIRCLE WITH THE PHASE NUMBER INDICATED IN THE CIRCLE - EXAMPLE (2). THE BARRICADES REQUIRED FOR EACH PHASE OF WORK IS INDICATED BY A SQUARE WITH THE WORK PHASE NUMBER INDICATED - EXAMPLE (2). BASE BID WORK IS PHASE 1, (2-1) EAST OF TAXILANE T, (2-2) & (3) AT TAXIWAYS C & D. ALTERNATE 1 WORK IS PHASE (2-1) WEST OF TAXILANE T, AND (3) AT TAXIWAY B.
- CONTRACTOR SHALL COMPLETE ALL WORK IN PHASE (1) PRIOR TO START OF WORK IN PHASE (2-2) WORK ON PHASES (2-1) AND (3) MAY BE DONE CONCURRENTLY WITH PHASE (1) BUT WORK ON PHASE (3) MUST STILL BE COMPLETED WITHIN THE WORKING DAYS RESTRICTIONS LISTED HEREIN. PHASE (3) ASPHALT SHALL BE PLACED WITH THE ASPHALT IN PHASE (2-1) AND (2-2) SO THAT NO JOINT IS PRESENT BETWEEN PHASES.
- PHASE (3) SHALL OCCUR IN 3 SEPARATE PHASES (3-1), (3-2) AND (3-3). SEE PLAN SHEET No. 3 FOR LIGHTED CLOSED RUNWAY CROSS DETAIL.
- PHASE (3-1) SHALL INCLUDE THE PULVERIZING OF THE ASPHALT AND BASE ROCK AND WILL INCLUDE GRADING AND ROLLING THE PULVERIZED MATERIALS WITHIN 25' OF THE EDGE OF RUNWAY 11-29. PHASE (3-2) SHALL BE COMPLETED WITHIN 1 WORKING DAY OF THE AIRPORT'S CHOICE DURING THE REGULAR PULVERIZING OPERATIONS.
- PHASE (3-2) SHALL INCLUDE ALL PAVEMENT SECTION CONSTRUCTION ACTIVITIES (EXCLUDING AC PAVING OPERATIONS) INCLUDING EXCAVATION, SUBGRADE COMPACTION, GRADING AND COMPACTION OF AGGREGATE SUBBASE AND BASE COURSES WITHIN 25' OF THE EDGE OF RUNWAY 11-29. THIS WORK MUST BE COMPLETED WITHIN 3 CONSECUTIVE WORKING DAYS. RUNWAY 11-29 SHALL BE OPENED OVERNIGHT AND THE AREA WITHIN 25' OF THE RUNWAY EDGE OF PAVEMENT MUST BE GRADED WITH A TEMPORARY SLOPE NOT TO EXCEED 5% AWAY FROM THE RUNWAY EDGE WHEN THE RUNWAY IS OPEN. A MAXIMUM VERTICAL EDGE OF 3 INCHES WILL BE ALLOWED TO REMAIN ONCE PHASE (3-2) IS COMPLETED. ALL ELECTRICAL WORK WITHIN THE RUNWAY SAFETY AREA OF RUNWAY 11-29 AT TAXIWAY B, C & D MUST BE COMPLETED WHILE PHASE (3-2) IS BEING CONSTRUCTED.
- PHASE (3-3) SHALL INCLUDE THE AC PAVING OPERATIONS WITHIN THE RUNWAY SAFETY AREA OF RUNWAY 11-29 AT TAXIWAY B, C & D. THIS WORK SHALL BE COMPLETED DURING 3 WORKING DAYS DURING THE REGULAR AC PAVING OPERATIONS DURING THE CONTRACT.
- WORK ON PHASE (4) SHALL OCCUR AFTER PHASE (1), (2) AND (3) ARE COMPLETED.



LEGEND

- N13104.806, E13982.525: AIRPORT GRID COORDINATE
- : EDGE OF PAVEMENT
- : HAUL ROAD
- : ARFF ACCESS ROUTE
- : AIRCRAFT ROUTE
- : CONSTRUCTION BARRICADE FOR ASSOCIATED PHASE
- : CONSTRUCTION PHASE IDENTIFICATION
- △: FLAGGER LOCATION FOR ASSOCIATED PHASE
- 38: COVER EXISTING SIGN (SEE TABLE)
- ▨: CONTRACTORS STORAGE AREA
- ①: CONSTRUCT CONNECTOR TAXIWAY - PHASE 1
- ②-1: RECONSTRUCT TAXIWAY A - PHASE 2-1
- ②-2: RECONSTRUCT TAXIWAY A - PHASE 2-2
- ③: RECONSTRUCT TAXIWAY B, C & D AT RUNWAY 11-29 SAFETY AREA - PHASE 3



CLOSED FACILITY SIGNAGE TABLE

SIGN NUMBER	SIGN FACE	CLOSURE PHASE	SIGN NUMBER	SIGN FACE	CLOSURE PHASE
1	← B	2, 3, 4	23	← 11-29	3, 4
2	B 11	2, 3, 4	24	11-29 →	3, 4
3	11	2, 3, 4	29	← A →	3, 4
4	← C	2, 3, 4	31	← V →	3, 4
5	← C	2, 3, 4	51	← C →	2, 3, 4
6	C 11-29	2, 3, 4	52	V → C	2, 3, 4
7	↙ D ↘	2, 3, 4	53	← L →	2, 3, 4
8	D 11-29	2, 3, 4	54	V → L	2, 3, 4
12	← F	3, 4	55	← D →	2, 3, 4
13	F 11-29	3, 4	56	V → D	2, 3, 4
19	← F	3, 4	57	← E →	2, 3, 4
21	← U	3, 4	58	V → E	2, 3, 4
22	U 11-29	3, 4			

PLOTTED BY Tom Shinkamp 2/12/2020 5:12 PM
G:\40 Truckee\4 TW A West\Bldg\4034.02 CSPP.plt.dwg

TRUCKEE-TAHOE AIRPORT
CALIFORNIA

**RECONSTRUCT WEST PORTION OF TAXIWAY A
RECONSTRUCT TAXIWAYS B, C, D, E & L
CONSTRUCTION SAFETY AND PHASING PLAN**

Reinard W. Brandley
CONSULTING AIRPORT ENGINEER
No. C 06558
Exp. 6-30-2020
REGISTERED PROFESSIONAL ENGINEER
STATE OF CALIFORNIA

REVISIONS	DATE	BY	DATE
No.			

ENGINEER OF RECORD

DATE: 1/31/20
DRAWN: TAS
CHECKED: DB
PROJECT No.: 40.34
FILE: 4034.02 CSPP.plt
SCALE: 1"=300'
SHEET No.: 2 of --