

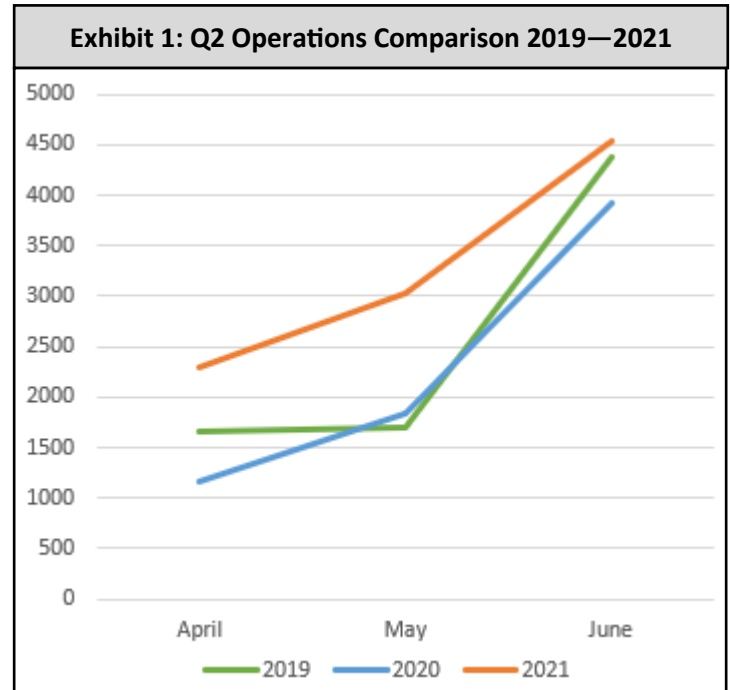
Q2 2021 Operations & Comments Report

Operations

- 9,852 operations. A 36% increase from Q2 2019 and a 35% increase from Q2 2020
- Runway 11-29 closed 07:00—17:00 local June 15-17 & 22-23 for striping
- Wingspan restrictions in June prevented operation of 50,000lb + jets (e.g. Gulfstream, Global Express)
- 1,360 operations by Cirrus SR20 & SR22
- GTX G-1000 flight simulator flown 84 hours
- 1,866 touch and go operations

Voluntary Curfew Operations 10 pm—7 am

- 107 Non - EMS operations
- 46 more than Q2 2019 and 62 more than Q2 2020
- 1 Helicopter, 15 Jets, 71 Pistons, 20 Turboprops
- 28 EMS operations
- 68% of operations were by locally-based aircraft
- 4 hangar tenant Fly Quiet violations



Top 5 Commercial Operators

1. **Sierra Aero** 1,176 operations
2. **Mountain Lion Aviation** 848 operations
3. **Soar Truckee** 580 tow-plane operations
4. **Skydive Truckee Tahoe** 520 operations
5. **NetJets** 321 operations

Top 5 Region Origins*

1. **Bay Area** 846 arrivals
2. **Southern CA** 313 arrivals
3. **Western States (NV to CO)** 299 arrivals
4. **Sacramento Area** 125 arrivals
5. **Central CA** 85 arrivals

Top 5 Region Destinations*

1. **Bay Area** 879 departures
2. **Western States (NV to CO)** 357 departures
3. **Southern CA** 325 departures
4. **Sacramento Area** 130 departures
5. **Central CA** 95 departures

*Counts are taken from filed flight plans and based on top 224 airport origins that visited KTRK in 2020

Exhibit 2: Q2 2021 Voluntary Curfew Operations

	10pm	11pm	12am	1am	2am	3am	4am	5am	6am
Arrival	24	4	4					3	10
Departure	16							1	45

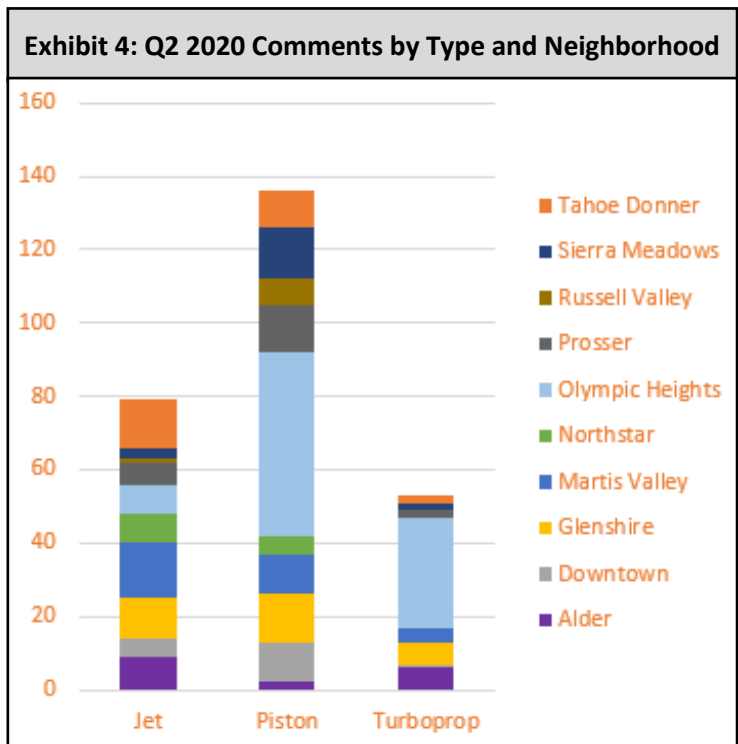
Exhibit 3: Q2 Operations by Aircraft Type 2019 — 2021

	2019	2020	2021	% change from 2019	% change from 2020
Piston Single	3906	3952	5331	36%	35%
Piston Twin	236	184	319	35%	73%
Turboprop	1222	924	1442	18%	56%
Jet < 12,499 lbs	190	156	203	7%	30%
Jet 12,500-19,999 lbs	323	305	573	77%	88%
Jet 20,000-49,999 lbs	293	402	486	66%	21%
Jet > 50,000 lbs	52	56	30	-42%	-46%
Helicopter	290	159	304	5%	91%
Total Powered Aircraft	6512	6138	8688	33%	42%
Gliders	1206	784	1164	-3%	48%
Total Operations	7718	6922	9852	28%	42%

Comments

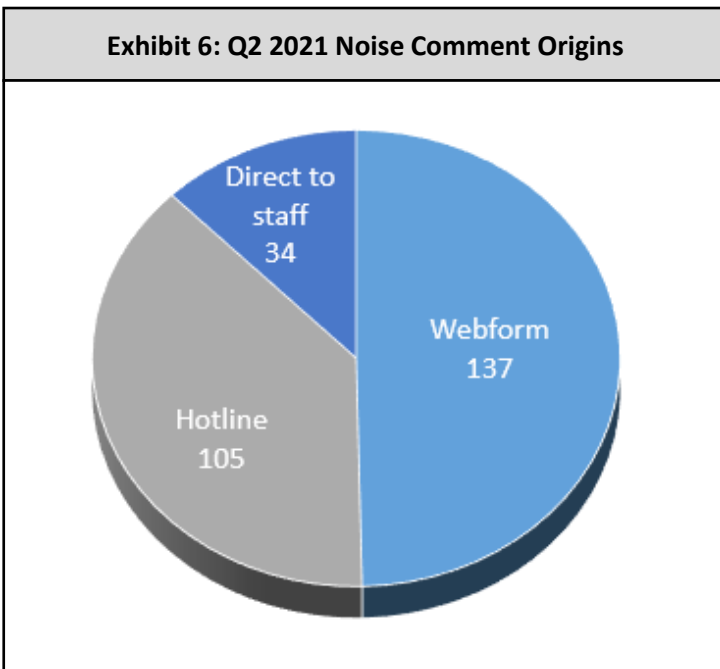
- 277 comments: up 64% from Q2 2019 and up 21% from Q2 2020
- 33 comments due to Cirrus SR20 & SR22
- 4% decrease in jet comments
- Glenshire was neighborhood with highest number of households, second in comments
- 20% more operations per comment than 2020

Exhibit 5: Q2 Noise Comments 2019 — 2021					
	2019	2020	2021	% change from 2019	% change from 2020
Helicopter	0	3	6	N/A	100%
Jet	57	83	80	40%	-4%
Piston	88	122	138	57%	13%
Turboprop	24	21	53	121%	152%
Unknown/Other	0	0	0	N/A	N/A
Total Comments	169	229	277	64%	21%



Top 5 Aircraft Commented On

1. **Cirrus SR22** 27 comments
2. **Pilatus PC12** 26 comments
3. **Cessna 172** 16 comments
4. **Cessna 182** 15 comments
5. **Cessna 180** 10 comments



Household Data

- 72 households: up from 52 in Q2 2019 and 70 in Q2 2020
- 16 new households
- 50% comments came from 11 households
- The most comments from a single household was 66
- 51% of households submitted one comment each

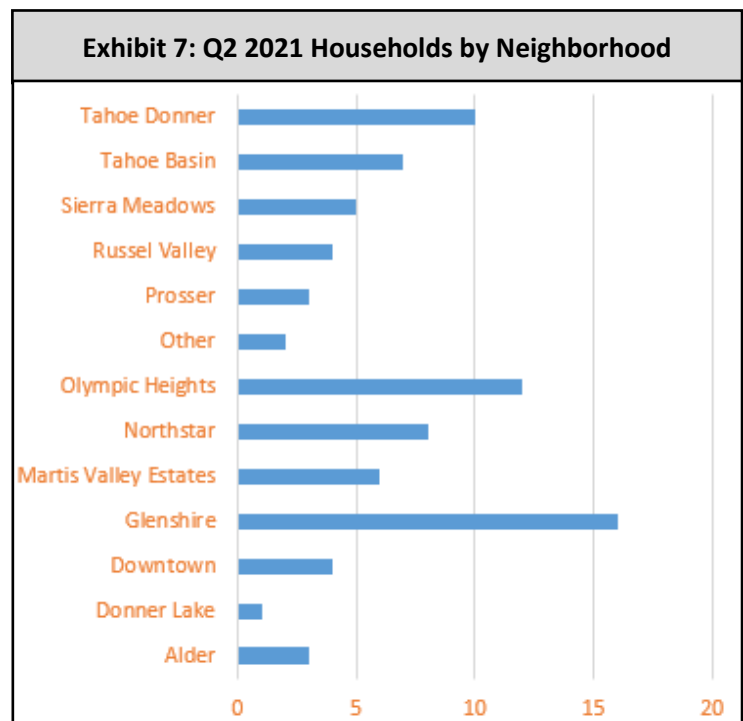


Exhibit 8a: Q2 2021 Noise Comment Heat Map (5 mile radius)

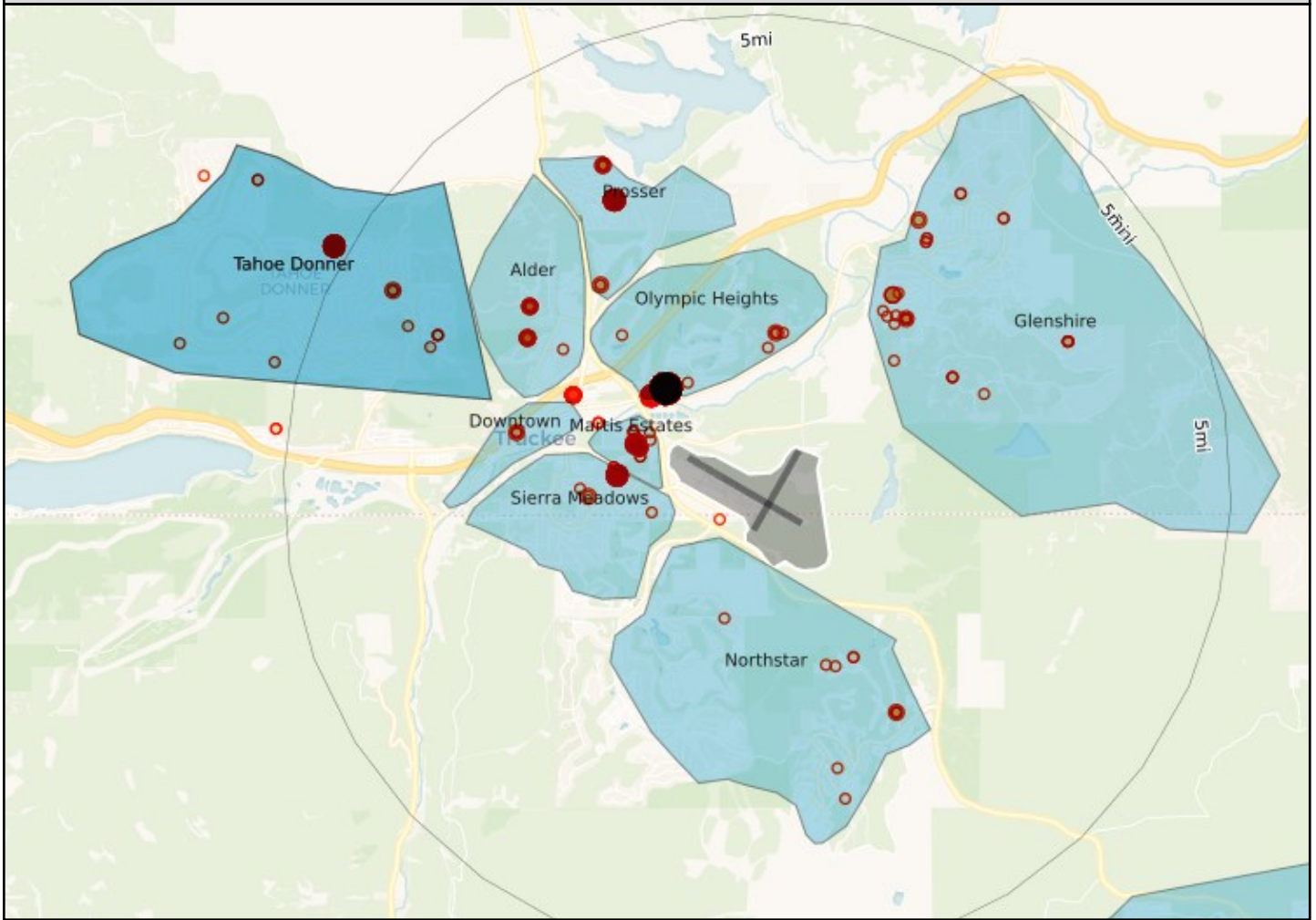


Exhibit 8b: Q2 2021 Heat Map (Russell Valley)

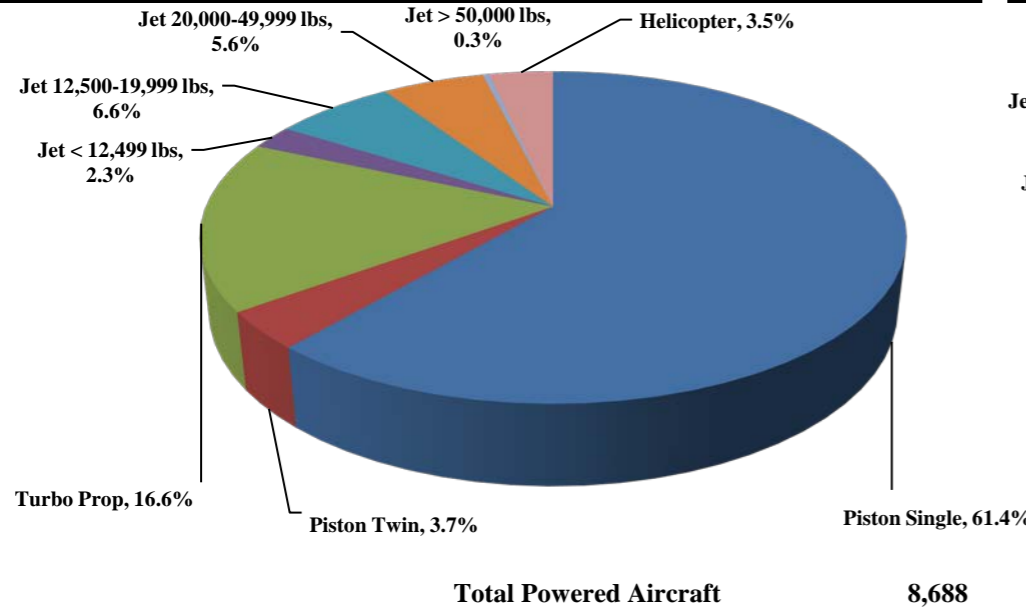




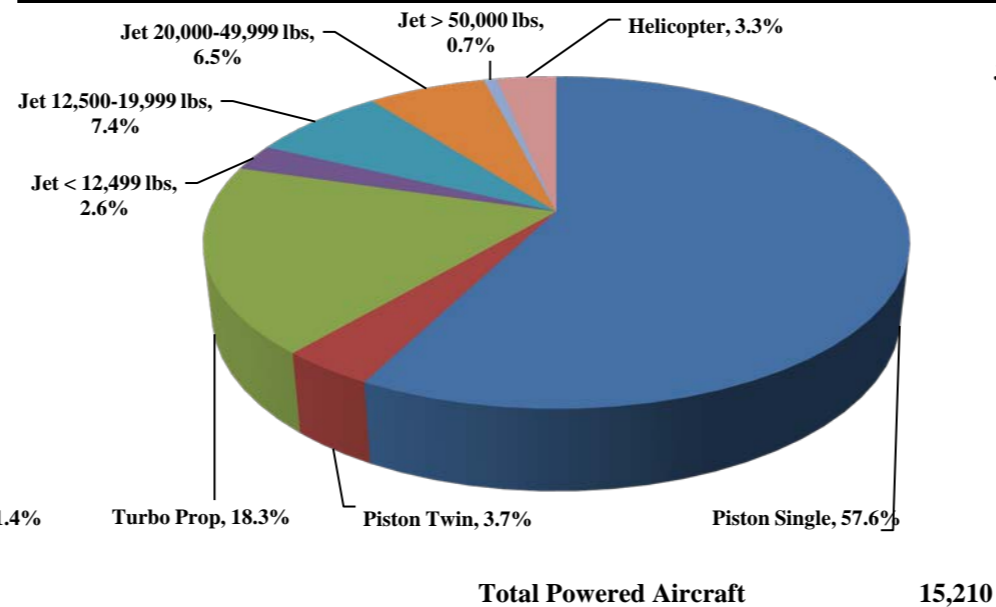
TRUCKEE TAHOE AIRPORT DISTRICT Operations and Community Comment Report as of 6/30/21



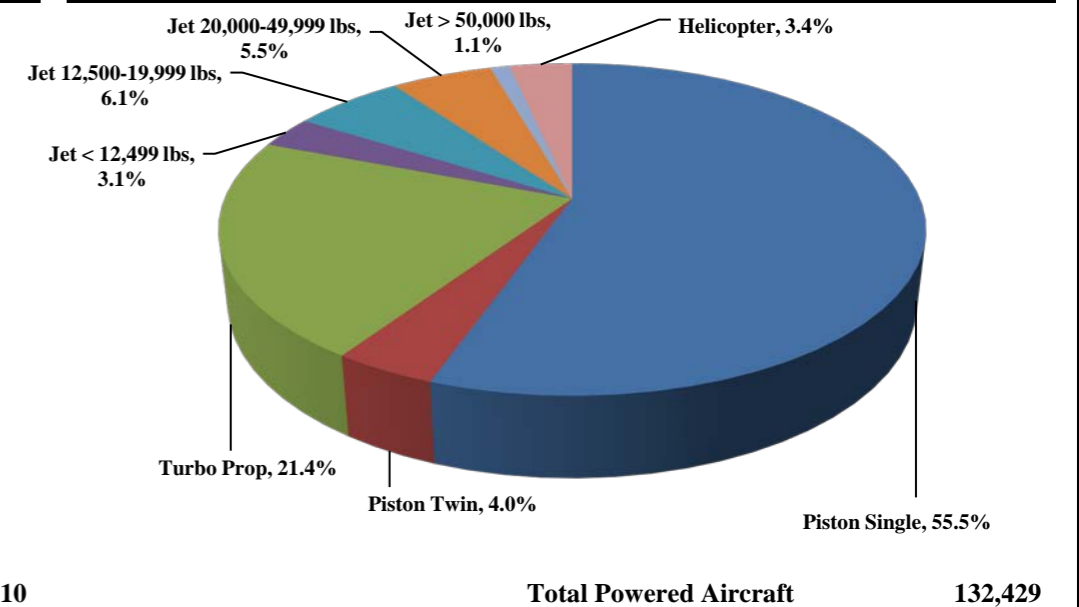
Current Quarter | Operations
April 1, 2021 - June 30, 2021



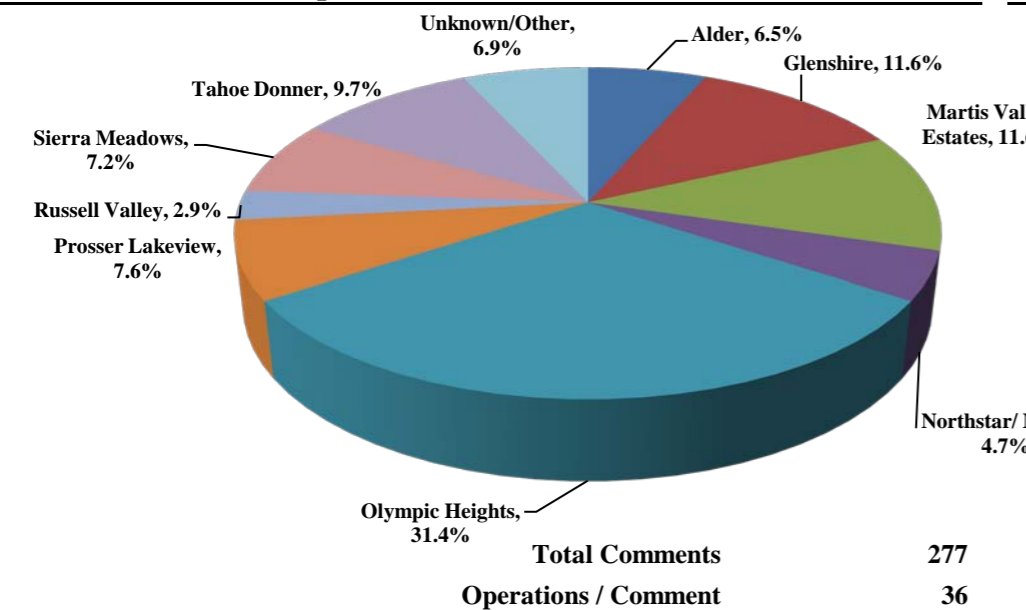
Year-to-Date | Operations
January 1, 2021 - June 30, 2021



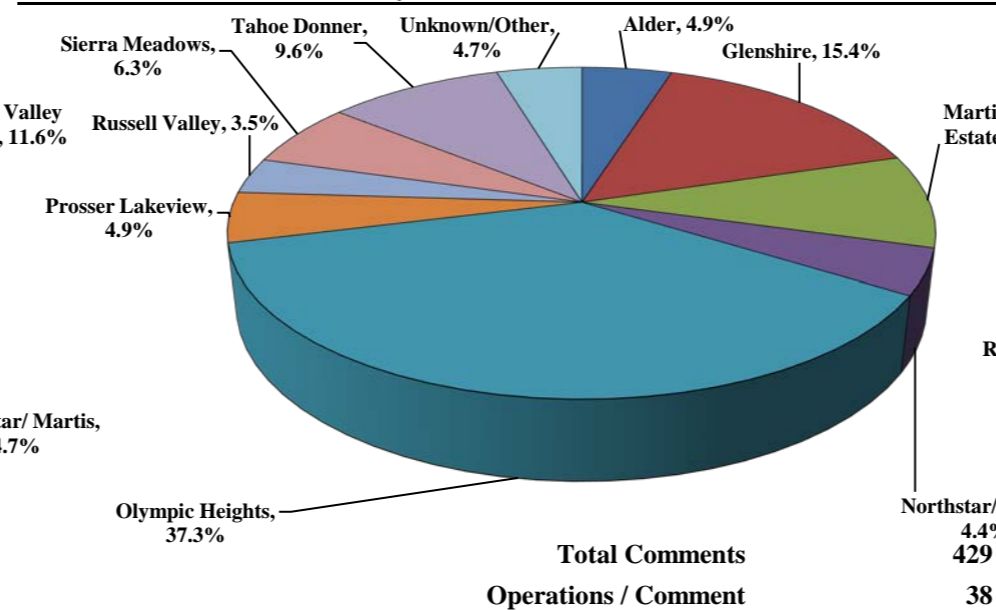
Historic | Operations
January 1, 2017 - June 30, 2021



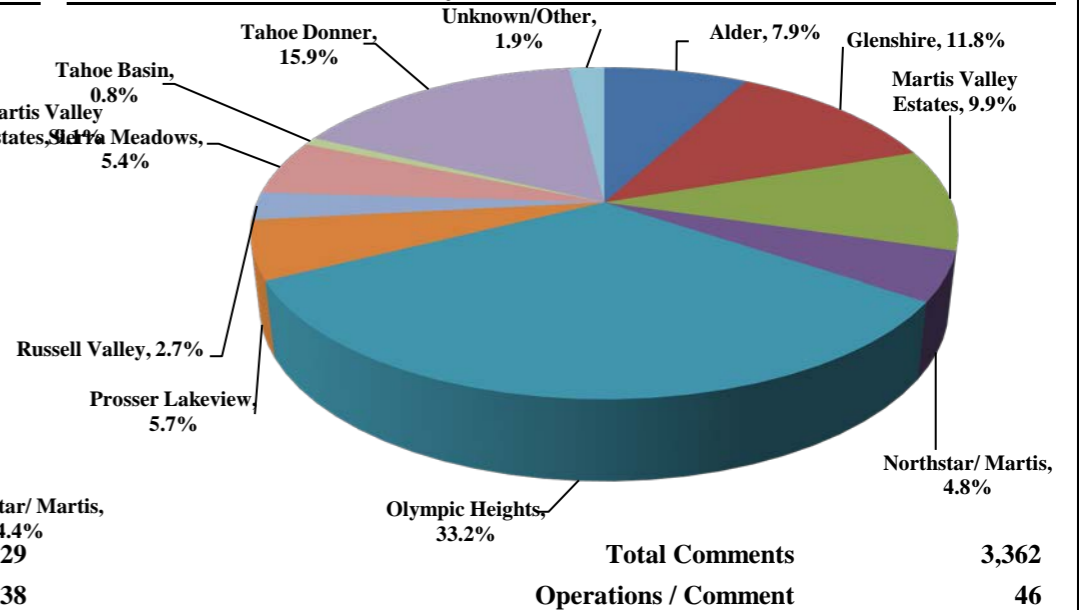
Current Quarter | Comments
April 1, 2021 - June 30, 2021



Year-to-Date | Comments
January 1, 2021 - June 30, 2021



Historic | Comments
January 1, 2017 - June 30, 2021



Notes

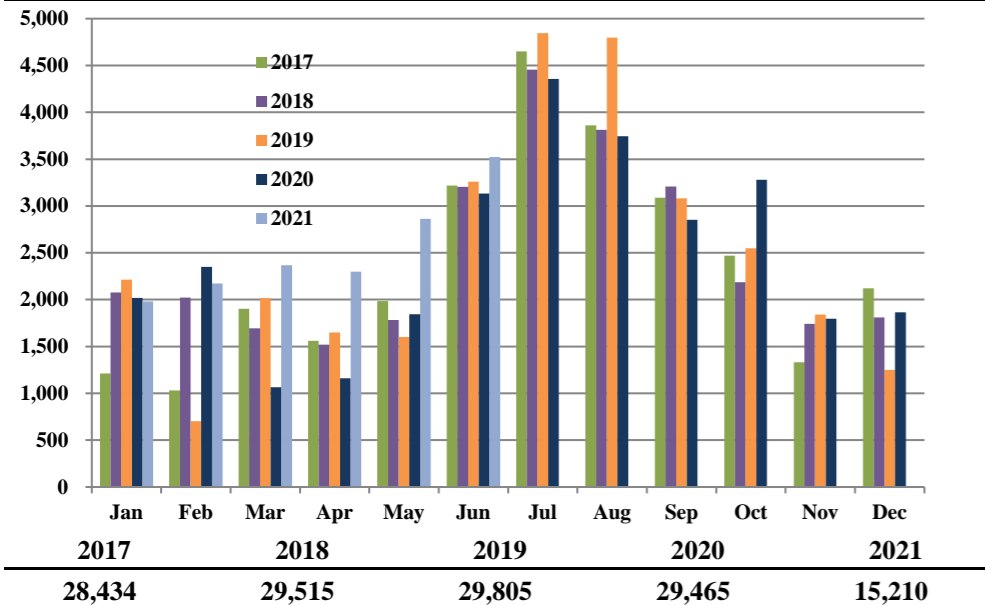
Operations graphs above use Total Powered Aircraft. Glider operations are not included.
2018 - Launched Community Hotline & Plane Noise with Smart Receipt
2017 - Residential Zones changed to match minimum of 1% of total comments
2015 - Jet > 50,000 lbs category added in Q1 **2014** - TTAD launched 'Report Noise' link in website



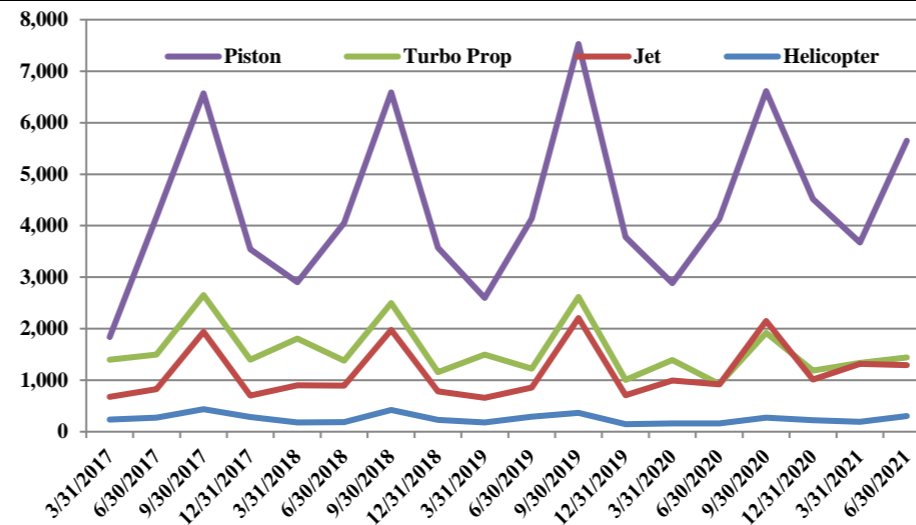
TRUCKEE TAHOE AIRPORT DISTRICT Operations and Community Comment Report as of 6/30/21



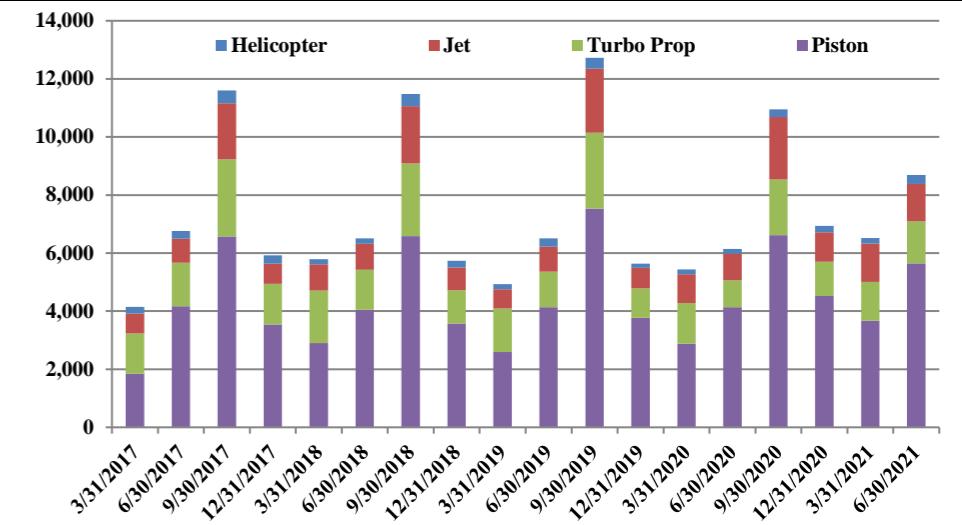
Operations | by Month by Year
January 1, 2017 - June 30, 2021



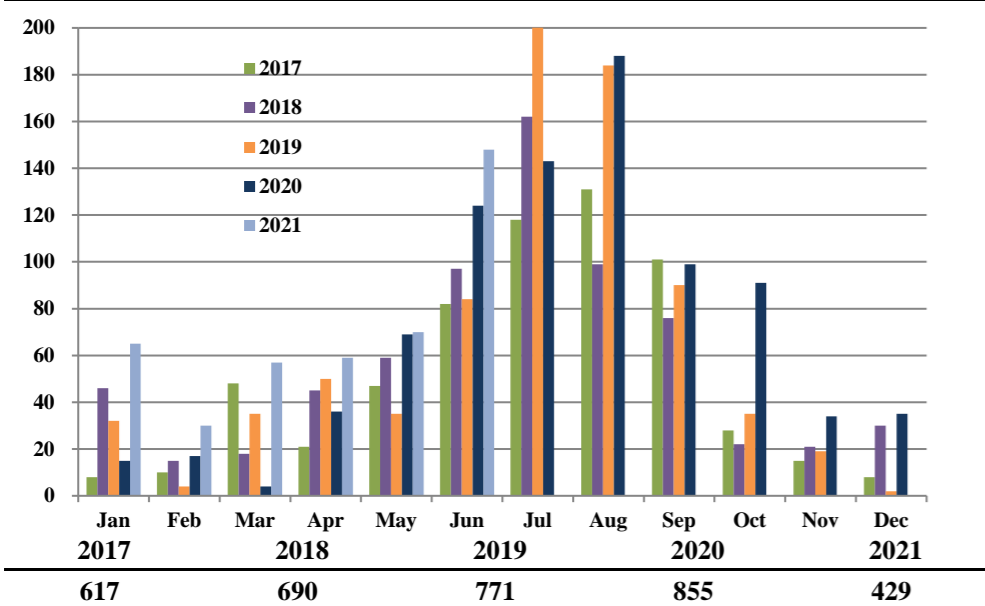
Operations | by Type by Quarter
January 1, 2017 - June 30, 2021



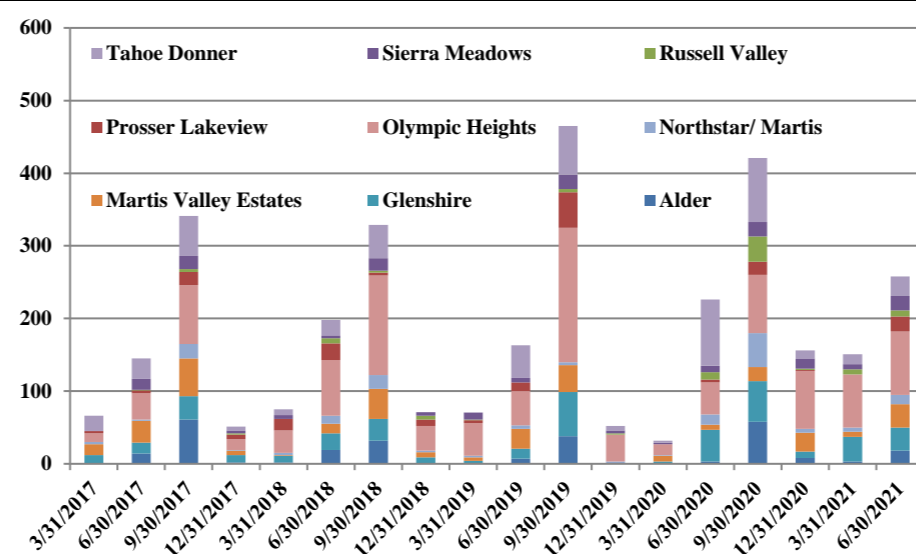
Operations | Mix by Type by Quarter
January 1, 2017 - June 30, 2021



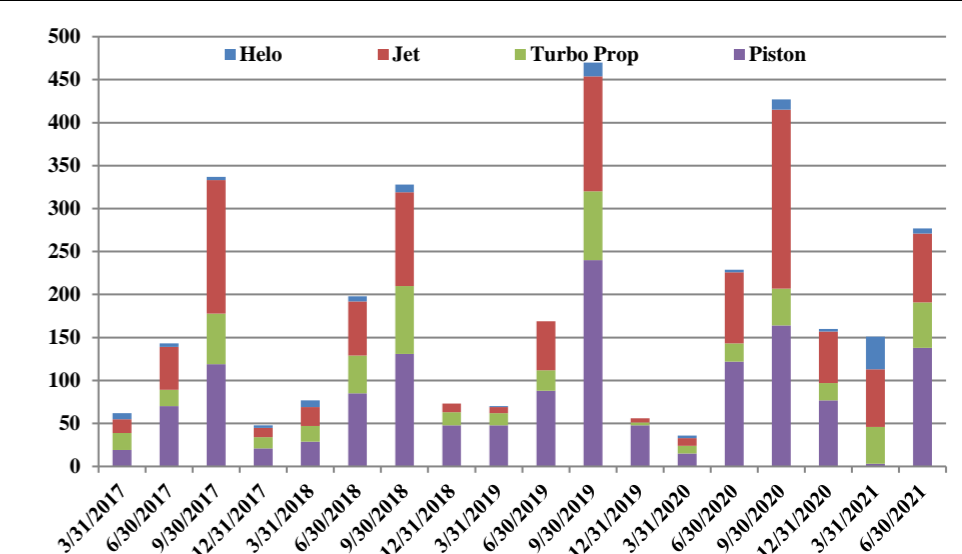
Comments | by Month by Year
January 1, 2017 - June 30, 2021



Comments | by Locale by Quarter
January 1, 2017 - June 30, 2021



Comments | by Type by Quarter
January 1, 2017 - June 30, 2021



Notes

Operations graphs above use Total Powered Aircraft. Glider operations are not included.
 2018 - Launched Community Hotline & Plane Noise with Smart Receipt
 2017 - Residential Zones changed to match minimum of 1% of total comments
 2015 - Jet > 50,000 lbs category added in Q1
 2014 - TTAD launched 'Report Noise' link in website



Truckee Tahoe Airport District Operations and Community Comment Report as of 6/30/21

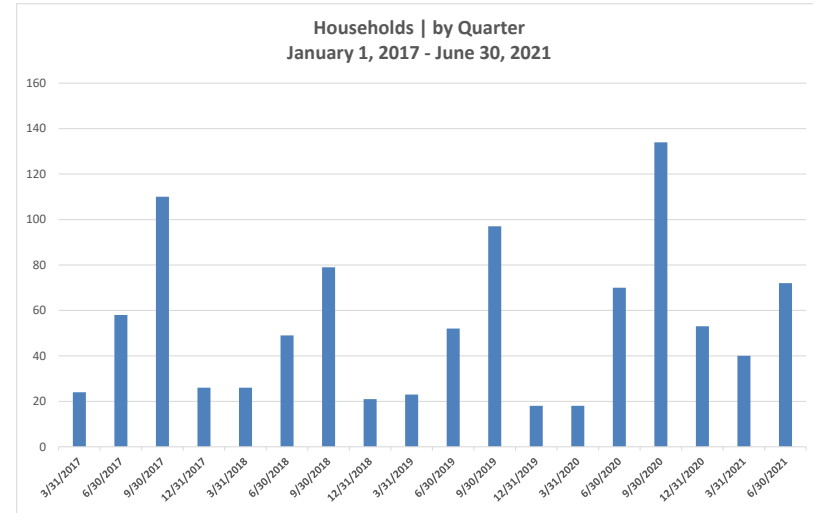
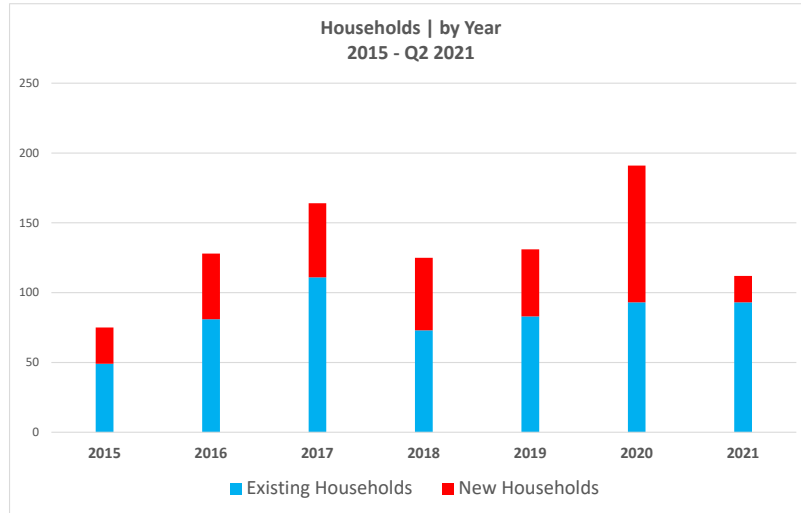


	OPERATIONS										Year over Year				Notes
	2020				2021				difference	%	7/1/19 - 6/30/20	7/1/20 - 6/30/21	difference	%	
	Apr	May	Jun	Q2	Apr	May	Jun	Q2							
Operations Detail															
Piston Single	845	1,172	1,935	3,952	1,498	1,890	1,943	5,331	1,379	34.89%	17,140	19,170	2,030	11.84%	
Piston Twin	36	46	102	184	94	105	120	319	135	73.37%	1,184	1,291	107	9.04%	
Turbo Prop	142	288	494	924	334	430	678	1,442	518	56.06%	5,944	5,879	(65)	(1.09%)	
Jet < 12,499 lbs	23	56	77	156	41	62	100	203	47	30.13%	969	874	(95)	(9.80%)	
Jet 12,500-19,999 lbs	44	106	155	305	149	135	289	573	268	87.87%	1,740	2,328	588	33.79%	
Jet 20,000-49,999 lbs	28	121	253	402	94	117	275	486	84	20.90%	1,811	2,156	345	19.05%	
Jet > 50,000 lbs	2	14	40	56	12	18	-	30	(26)	(46.43%)	308	414	106	34.42%	
Helicopter	40	42	77	159	78	107	119	304	145	91.19%	838	991	153	18.26%	
Total Powered Aircraft	1,160	1,845	3,133	6,138	2,300	2,864	3,524	8,688	2,550	41.54%	29,934	33,103	3,169	10.59%	
Gliders	-	-	784	784	1	159	1,004	1,164	380	48.47%	6,152	4,356	(1,796)	(29.19%)	
Total Operations	1,160	1,845	3,917	6,922	2,301	3,023	4,528	9,852	2,930	42.33%	36,086	37,459	1,373	3.80%	

	COMMENTS										Year over Year				Notes		
	2020				2021				difference	%	7/1/19 - 6/30/20	7/1/20 - 6/30/21	difference	%			
	Apr	May	Jun	Q2	Apr	May	Jun	Q2									
Comment Location																	
Alder	-	-	3	3	-	2	16	18	15	500.00%	41	87	46	112.20%			
Glenshire	2	7	35	44	10	6	16	32	(12)	(27.27%)	108	131	23	21.30%			
Martis Valley Estates	2	2	3	7	7	6	19	32	25	357.14%	53	84	31	58.49%			
Northstar/ Martis	-	4	10	14	2	3	8	13	(1)	(7.14%)	21	71	50	238.10%			
Olympic Heights	14	8	22	44	28	21	38	87	43	97.73%	281	320	39	13.88%			
Prosser Lakeview	1	1	2	4	3	2	16	21	17	425.00%	53	40	(13)	(24.53%)			
Russell Valley	1	2	7	10	1	1	6	8	(2)	(20.00%)	16	52	36	225.00%			
Sierra Meadows	1	3	5	9	4	12	4	20	11	122.22%	35	61	26	74.29%			
Tahoe Basin	-	2	-	2	-	-	-	-	(2)	(100.00%)	3	5	2	66.67%			
Tahoe Donner	15	40	36	91	3	13	11	27	(64)	(70.33%)	167	140	(27)	(16.17%)			
Unknown/Other	-	-	1	1	1	4	14	19	18	1800.00%	18	28	10	55.56%			
Total Comments	36	69	124	229	59	70	148	277	48	20.96%	796	1,019	223	28.02%	-		
Comment Type																	
Piston	23	34	65	122	31	43	64	138	16	13.11%	425	382	(43)	(10.12%)			
Turbine	3	4	14	21	14	10	29	53	32	152.38%	113	159	46	40.71%			
Jet	10	29	44	83	12	14	54	80	(3)	(3.61%)	231	415	184	79.65%			
Helo	-	2	1	3	2	3	1	6	3	100.00%	22	59	37	168.18%			
Unknown	-	-	-	-	-	-	-	-	-	0.00%	5	4	(1)	(20.00%)			
Total Comments	36	69	124	229	59	70	148	277	48	20.96%	796	1,019	223	28.02%	-		
Operations per Comment																	
				30.2				35.6			5.3	17.67%	45.3	36.8	(8.6)	(18.91%)	-



Truckee Tahoe Airport District Households Summary 2017-2021





Truckee Tahoe Airport District Operations and Community Comment Report 2017-2021



	2017					2018					2019					2020					2021					Total
	Q1	Q2	Q3	Q4	Total	Q1	Q2	Q3	Q4	Total	Q1	Q2	Q3	Q4	Total	Q1	Q2	Q3	Q4	Total	Q1	Q2	Q3	Q4	Total	
Operations Detail																										
Piston Single	1,614	3,910	6,122	3,332	14,978	2,660	3,727	6,125	3,425	15,937	2,327	3,906	7,000	3,542	16,775	2,646	3,952	6,183	4,221	17,002	3,435	5,331	-	-	8,766	73,458
Piston Twin	224	261	450	210	1,145	242	323	464	147	1,176	269	236	528	236	1,269	236	184	433	299	1,152	240	319	-	-	559	5,301
Turbo Prop	1,398	1,496	2,653	1,395	6,942	1,809	1,381	2,496	1,154	6,840	1,497	1,222	2,619	1,008	6,346	1,393	924	1,917	1,184	5,418	1,336	1,442	-	-	2,778	28,324
Jet < 12,499 lbs	144	189	451	176	960	165	181	391	159	896	185	190	477	146	998	190	156	343	140	829	188	203	-	-	391	4,074
Jet 12,500-19,999 lbs	290	305	738	266	1,599	349	371	743	288	1,751	278	323	763	294	1,658	378	305	778	422	1,883	555	573	-	-	1,128	8,019
Jet 20,000-49,999 lbs	232	268	564	210	1,274	331	302	691	282	1,606	165	293	809	237	1,504	363	402	803	371	1,939	496	486	-	-	982	7,305
Jet > 50,000 lbs	9	63	186	49	307	55	38	149	54	296	30	52	158	30	270	64	56	224	80	424	80	30	-	-	110	1,407
Helicopter	236	272	437	284	1,229	181	183	420	229	1,013	180	290	369	146	985	164	159	270	225	818	192	304	-	-	496	4,541
Total Powered Aircraft	4,147	6,764	11,601	5,922	28,434	5,792	6,506	11,479	5,738	29,515	4,931	6,512	12,723	5,639	29,805	5,434	6,138	10,951	6,942	29,465	6,522	8,688	-	-	15,210	132,429
Gliders	-	888	4,258	-	5,146	-	1,172	4,160	-	5,332	-	1,206	5,368	-	6,574	-	784	3,192	-	3,976	-	1,164	-	-	1,164	22,192
Total Operations	4,147	7,652	15,859	5,922	33,580	5,792	7,678	15,639	5,738	34,847	4,931	7,718	18,091	5,639	36,379	5,434	6,922	14,143	6,942	33,441	6,522	9,852	-	-	16,374	154,621

	2017					2018					2019					2020					2021					Total
	Q1	Q2	Q3	Q4	Total	Q1	Q2	Q3	Q4	Total	Q1	Q2	Q3	Q4	Total	Q1	Q2	Q3	Q4	Total	Q1	Q2	Q3	Q4	Total	
Comment Location																										
Alder	-	14	61	2	77	2	19	32	-	53	-	7	38	-	45	-	3	58	8	69	3	18	-	-	21	265
Glenshire	12	15	32	10	69	9	23	30	9	71	4	14	61	-	79	3	44	56	9	112	34	32	-	-	66	397
Martis Valley Estates	15	30	52	6	103	1	13	41	7	62	5	27	37	1	70	8	7	19	26	60	7	32	-	-	39	334
Northstar/ Martis	3	2	20	1	26	3	11	19	2	35	2	5	4	2	13	1	14	47	5	67	6	13	-	-	19	160
Olympic Heights	12	36	81	15	144	31	77	137	34	279	45	47	185	37	314	15	44	80	80	219	73	87	-	-	160	1,116
Prosser Lakeview	3	4	18	6	31	16	23	4	9	52	4	12	49	-	65	-	4	18	1	23	-	21	-	-	21	192
Russell Valley	-	1	4	2	7	-	7	3	5	15	1	-	4	2	7	-	10	35	2	47	7	8	-	-	15	91
Sierra Meadows	1	15	18	4	38	5	4	17	5	31	9	6	20	4	39	2	9	20	14	45	7	20	-	-	27	180
Tahoe Basin	-	3	6	-	9	1	2	2	1	6	-	3	1	-	4	-	2	2	3	7	-	-	-	-	26	26
Tahoe Donner	20	28	55	5	108	8	21	46	-	75	1	45	67	6	119	3	91	88	11	193	14	27	-	-	41	536
Unknown/Other	-	2	3	-	5	3	1	6	1	11	-	3	9	4	16	4	1	7	1	13	1	19	-	-	20	65
Total Comments	66	150	350	51	617	79	201	337	73	690	71	169	475	56	771	36	229	430	160	855	152	277	-	-	429	3,362
Comment Type																										
Piston	19	70	119	21	229	29	85	131	48	293	48	88	240	48	424	15	122	164	77	378	3	138	-	-	141	1,465
Turbine	20	19	59	13	111	18	44	79	15	156	14	24	80	3	121	9	21	43	20	93	43	53	-	-	96	577
Jet	16	50	155	11	232	22	63	109	10	204	7	57	134	5	203	9	83	208	60	360	67	80	-	-	147	1,146
Helo	7	4	4	3	18	8	6	9	-	23	1	-	16	-	17	3	3	12	3	21	38	6	-	-	44	123
Unknown	4	7	13	3	27	2	3	9	-	14	1	-	5	-	6	-	-	3	-	3	1	-	-	-	1	51
Total Comments	66	150	350	51	617	79	201	337	73	690	71	169	475	56	771	36	229	430	160	855	152	277	-	-	429	3,362
Operations per Comment	63	51	45	116	54	73	38	46	79	51	69	46	38	101	47	151	30	33	43	39	36	25	-	-	78	46