

MEMO:

To: Community Members, Board of Directors, ACAT and Staff
From: Hardy Bullock, Community Affairs & Conservation Manager
Subject: Community Comments & Operations Report- 3rd Quarter 2013
Date: December 5, 2013

There was no system downtime in Q3 2013 and all unknown type operations were manually identified and integrated into the operational numbers. The only flights not captured with the use of WASP or MLAT flight tracking data are touch and go operations and itinerant helicopters.

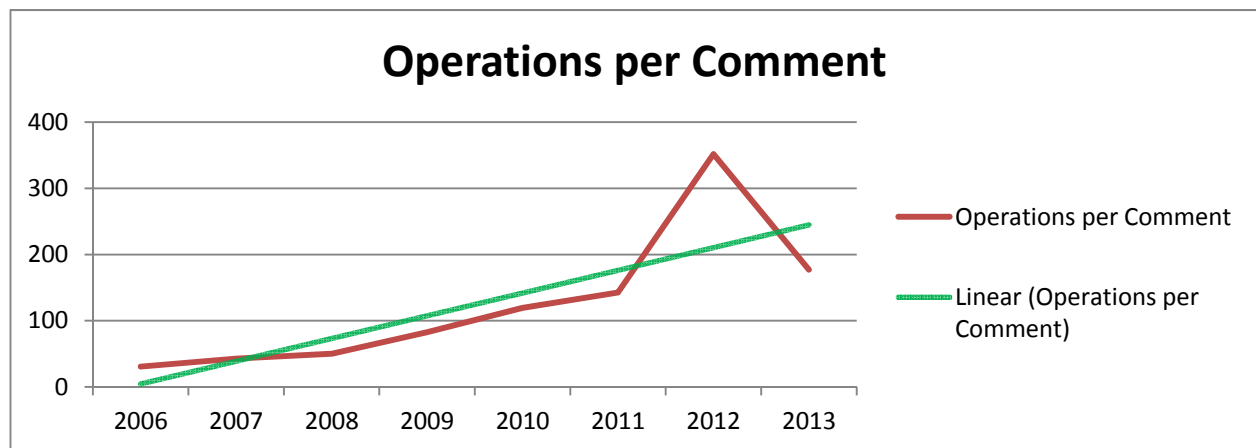
Staff processed two cancellations of voluntary Fly Quiet Incentives due to out of hours operations. Five operations after 11 PM and before 6 AM were captured in Q3 of 2013. One flight at 11:15 PM awoke a neighboring resident and created one comment. Letters have been sent to all offending voluntary curfew violators.

Beyond the comments

68 comments were received from 31 households; this represents primarily single event annoyance. 23% of the comments for Q3 2013 were from households in the Prosser area, the remaining 75% were spread fairly evenly across the remaining neighborhoods throughout the community. Arrivals, departures, and unknown operations generated roughly the same amount of community annoyance. The general trend this quarter is broad, non-specific single event annoyance. Many comments referenced unknown operations type, runway, and aircraft.

4 new households commented in Q3 2013.

Operations per comment are down this quarter. The increased awareness of the District due to the Master Plan effort is a significant contributor to this phenomenon. On average annoyance continues to trend down as measured by comments per operation. Q3 2012 recorded unusually low numbers of annoyance due to the runway 29 closure and the limitation on turbine aircraft operations.



Comments by Operation Q3 2013

- ✓ Departures generated 28 comments (42%)
- ✓ Arrivals generated 28 comments (42%)
- ✓ Unknown operations generated 12 comments (16%)

Comments by Runway Q3 2013

- ✓ Runway 29 operations generated 35 comments (51%)
- ✓ Runway 11 operations generated 14 comments (21%)
- ✓ Runway 02 operations generated 8 comments (12%)
- ✓ Runway 20 operations generated 4 comments (6%)
- ✓ Unknown operations generated 7 comments (10%)

Comments by Aircraft Type Q2 2013

- ✓ Jet aircraft 44 comments (65%)
- ✓ Piston aircraft 12 comments (17%)
- ✓ Unknown aircraft type 8 comments (12%)
- ✓ Turbo prop aircraft 4 comment (6%)

Flight Tracking Data Q3 2013

47 flight tracks were correlated out of 68 comments, 21 comments had no correlated or associated flight tracks. Staff has listed the possible explanation in order of likelihood.

1. Lack of data or inability to associate annoyance with accurate time of day.
2. Aircraft presented no data to the flight tracking system.

Q3 2013 Community Comments and Operations Report

	Jul-12	Jul-13	% Change	Aug-12	Aug-13	% Change	Sep-12	Sep-13	% Change	3Q 2012	3Q 2013	3Q 2013	LYTD	YTD	% Change	
Comments- Location																
Alder	2	2	0%	0	1	N/A	0	0	N/A	2	3	50%	2	4	100%	
Donner Lake	0	0	N/A	0	0	N/A	0	0	N/A	0	0	N/A	0	0	N/A	
Downtown	0	0	N/A	0	0	N/A	0	0	N/A	0	0	N/A	0	0	N/A	
Gateway	2	1	-50%	0	0	N/A	0	0	N/A	2	1	-50%	2	1	-50%	
Glenshire	7	0	-100%	7	4	-43%	1	3	200%	15	7	-53%	17	10	-41%	
Martis Valley Estates	0	0	N/A	0	0	N/A	0	0	N/A	0	0	N/A	12	6	-50%	
Northstar/ Martis	0	3	N/A	0	5	N/A	0	4	N/A	0	12	N/A	1	17	1600%	
Olympic Heights	1	5	400%	1	1	0%	4	3	-25%	6	9	50%	8	13	63%	
Ponderosa	1	0	-100%	1	1	0%	0	4	N/A	2	5	150%	2	6	200%	
Prosser	0	10	N/A	0	4	N/A	0	3	N/A	0	17	N/A	1	25	2400%	
Tahoe Donner	0	2	N/A	1	1	0%	2	1	-50%	3	4	33%	3	17	467%	
Unknown/Other	1	2	100%	2	6	200%	1	2	100%	4	10	150%	4	12	200%	
TOTAL	14	25	79%	12	23	92%	8	20	150%	34	68	100%	52	111	113%	
Operations- Type																
Piston Single	1138	723	-36%	840	669	-20%	728	547	-25%	2706	1939	-28%	6833	5416	-21%	
Piston Twin	136	110	-19%	128	138	8%	86	76	-12%	350	324	-7%	709	820	16%	
Turbo Prop	492	400	-19%	434	414	-5%	286	234	-18%	1212	1048	-14%	2300	2518	9%	
Jet <12,499 lbs	72	146	103%	30	158	427%	12	92	667%	114	396	247%	320	828	159%	
Jet 12,499-19,999 lbs	78	130	67%	110	124	13%	70	114	63%	258	368	43%	474	728	54%	
Jet > 20,000 lbs	82	196	139%	74	158	114%	30	82	173%	186	436	134%	418	846	102%	
Helicopter	162	160	-1%	142	125	-12%	112	100	-11%	416	385	-7%	994	1074	8%	
Powered Aircraft Subtotal	2160	1865	-14%	1758	1786	2%	1324	1245	-6%	5242	4896	-7%	12048	12230	2%	
Gliders	1319	1319	0%	1319	1319	0%	1319	1319	0%	3957	3957	0%	5274	4780	-9%	
TOTAL	3479	3184	-8%	3077	3105	1%	2643	2564	-3%	9199	8853	-4%	17322	17010	-2%	
Comments- Type																
Piston	1	9	800%	2	1	-50%	2	2	0%	5	12	140%	20	24	20%	
Turbine	5	2	-60%	1	2	100%	2	0	-100%	8	4	-50%	9	7	-22%	
Jet	3	14	367%	7	17	143%	0	13	100%	10	44	340%	12	67	458%	
Helo	0	0	0%	1	0	-100%	1	0	-100%	2	0	-100%	2	1	-50%	
Unknown	5	0	-100%	1	3	200%	3	5	67%	9	8	-11%	9	12	33%	
TOTAL	14	25	79%	12	23	92%	8	20	150%	34	68	100%	52	111	113%	
Ops/Comment		249	127	-49%	256	135	-47%	330	128	-61%	271	130	-52%	333	153	-54%

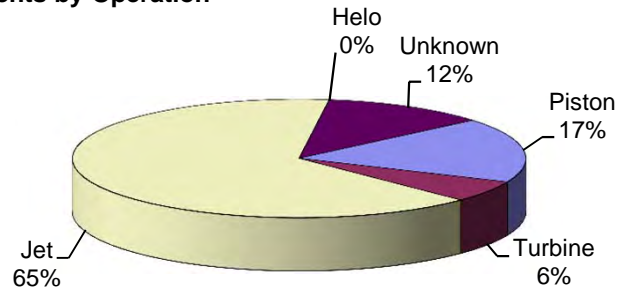
	Q3 2012	Q3 2013	% Change	2012 YTD	2013 YTD	% Change
Total Operations	9199	8853	-4%	17322	17010	-2%
Total Comments	34	68	100%	52	111	113%
Ops/Comment	271	130	-52%	333	153	-54%

Operations & Community Comment Report

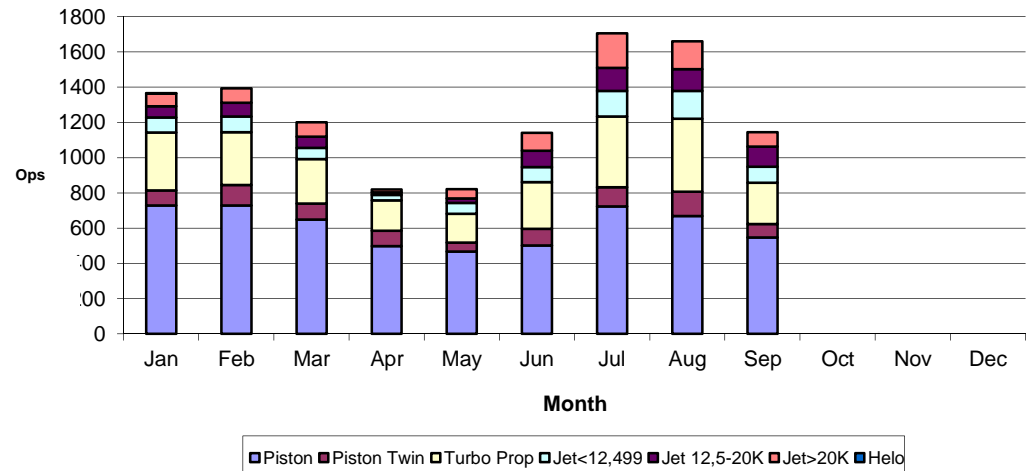
Third Quarter 2013

Truckee Tahoe Airport District

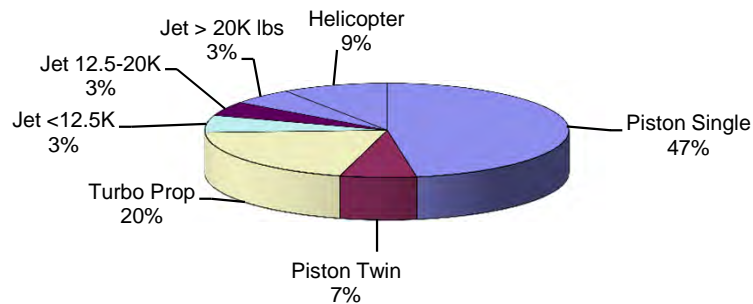
Comments by Operation



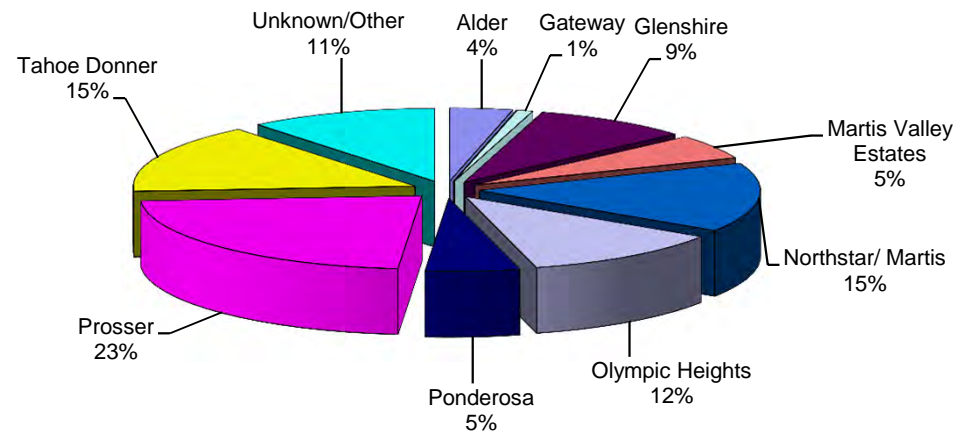
Operations by Type of Aircraft 2013



YTD Operations by Aircraft Type



YTD Comments by Location



Comments 2011 to 2013

