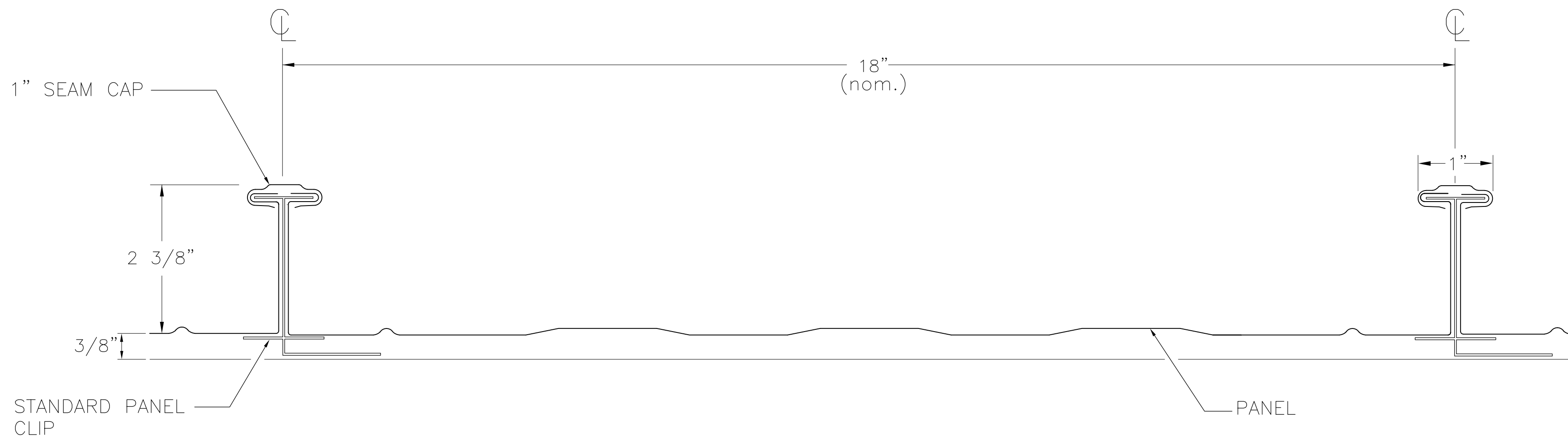
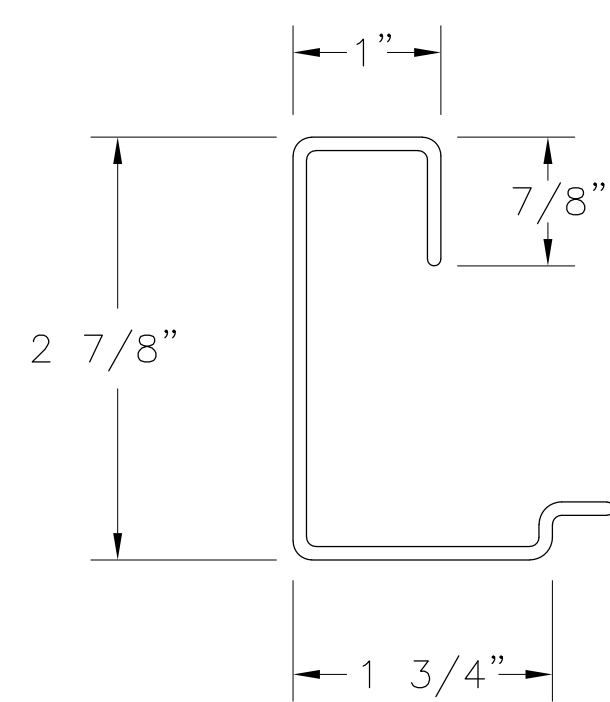


TRUCKEE TAHOE AIRPORT HANGAR REPAIRS

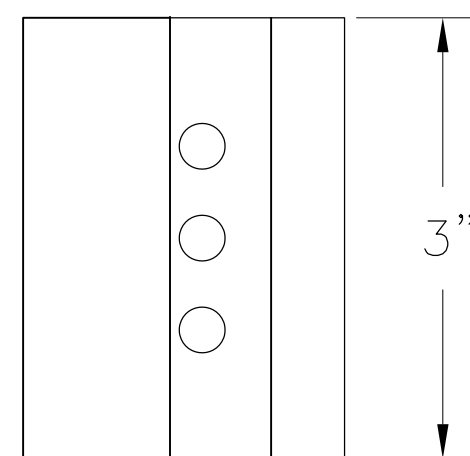
10356 TRUCKEE AIRPORT RD., TRUCKEE, CA 96161



TYPICAL RMS-18 PANEL PROFILE

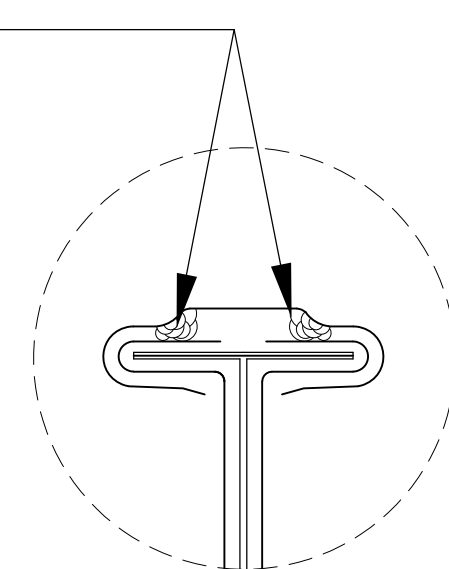
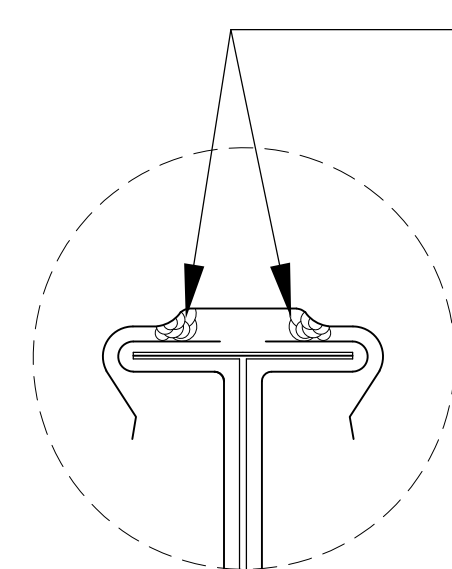


#3007GS GABLE CLIP
GALVANIZED STEEL

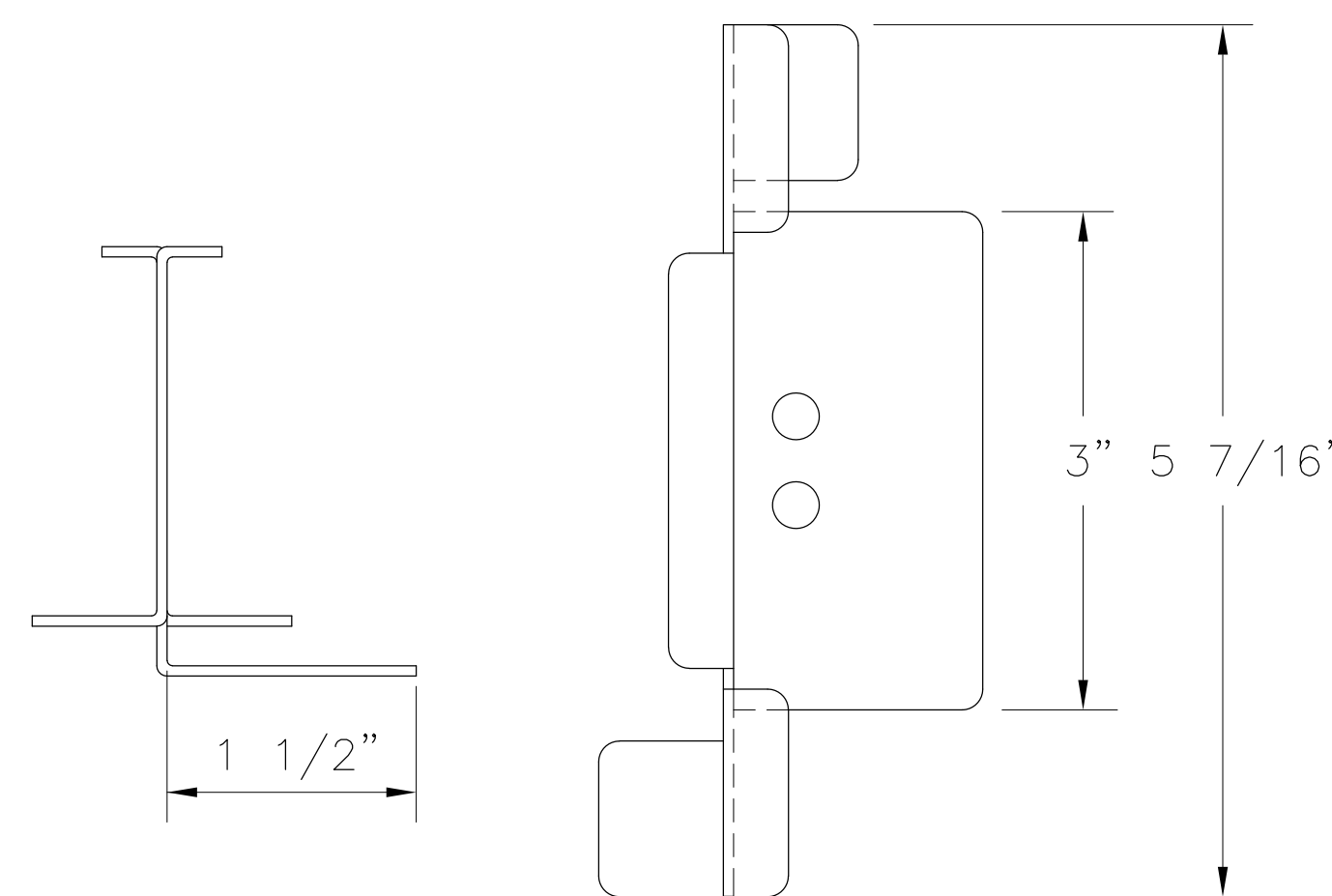


FACTORY APPLIED SEALANT IN AN UNSEAMED PANEL CAP

CONTINUOUS "HOT MELT" SEALANT BEADS IN EACH CAP



"HOT MELT" SEALANT BEADS
FACTORY APPLIED



#301016GS STD. CLIP
GALVANIZED STEEL

R-MER SPAN PANEL AND ACCESSORIES

SPECIAL NOTES:

R-MER SPAN PANEL NOTES:

- FOR ADDITIONAL R-MER SPAN INSTALLATION INSTRUCTIONS, CONTACT GARLAND FOR AN INSTALLATION GUIDELINES MANUAL.
- ALL PANEL CLIPS ARE TO BE FASTENED USING (2) TWO 1/4-14 HWH, BLAZER TYPE 3, SELF-TAPPING FASTENERS WITH AN ULTIMATE PULLOUT VALUE OF: 829# PER FASTENER INTO EXISTING PURLINE OVER ENTIRE ROOF.
- ROOF PANELS ARE TO BE FIELD SEAMED BY ERECTOR WITH GARLAND'S ELECTRIC SEAMER. REFERENCE INSTALLATION MANUAL AND/OR OPERATING INSTRUCTIONS PROVIDED WITH SHIPMENT OF SEAMER.

GENERAL NOTES:

ATTENTION: ARCHITECT, G/C, & SUB-CONTRACTOR

THESE SHOP DRAWINGS HAVE BEEN SUBMITTED FOR ARCHITECT, GENERAL CONTRACTOR AND SUB-CONTRACTOR APPROVAL. ALL OF GARLAND'S SHOP FABRICATED MATERIAL WILL BE MANUFACTURED TO THE DIMENSIONS SHOWN UNLESS OTHERWISE NOTED. IT IS CRUCIAL THAT ANY NECESSARY CHANGES, NOTATIONS OR REQUESTED INFORMATION BE CLEARLY NOTED.

*APPROVAL STAMPS/SIGNATURES ATTACHED AT RIGHT.

ARCHITECT APPROVAL

G/C APPROVAL

SUB-CONTRACTOR APPROVAL

STORAGE NOTE:

ALWAYS STORE ALL COMPONENTS IN A CLEAN, DRY STORAGE AREA. PREVENT CONTACT WITH CORROSIVE OR STAINING MATERIALS.

MATERIAL NOTE:

SOME OIL CANNING OF PANELS IS COMMON IN THE INDUSTRY AND IS NOT CONSIDERED CAUSE FOR PRODUCT REJECTION.

SEALANT NOTE:

USE A CONTINUOUS BEAD OF NON-HARDENING, HIGH QUALITY SEALANT COMPATIBLE WITH KYNAR AND POLYESTER FINISHES. FOR FORMED COPING, EXTENDERS, FASCIA AND WALL CAPS, APPLY SEALANT BEAD TO THE CONCEALED PORTION OF THE SPLICE PLATE. (SEALANT BY ERECTOR)



IMPORTANT CUSTOMER NOTE: PLEASE READ AND SIGN BELOW

- 1) ALL OF GARLAND'S SHOP FABRICATED MATERIAL WILL BE MANUFACTURED TO THE DIMENSIONS SHOWN UNLESS OTHERWISE NOTED.
- 2) IT IS CRUCIAL THAT ANY NECESSARY CHANGES, NOTATIONS OR REQUESTED INFORMATION BE CLEARLY NOTED ON THE SHOP DRAWINGS AND RETURNED TO GARLAND FOR REVIEW.
- 3) EACH DIMENSION MARKED WITH AN (*) MUST BE APPROVED FOR FABRICATION BY INDICATING THE RESPONSE "OK" OR "✓", OR BY NOTING THE CORRECT DIMENSION.
- 4) WHERE GARLAND SPECIFICALLY REQUESTS TO "FIELD VERIFY" OR "SPECIFY" A DIMENSION, THE PROPER CUSTOMER RESPONSE WILL BE TO:
 - A) MARK WITH EITHER "OK" OR "✓" IF THE DIMENSION IS CORRECT.
 - B) NOTE THE CORRECT DIMENSION.
 IT IS IMPERATIVE THAT FIELD DIMENSIONS ARE TAKEN TO INSURE ACCURATE FABRICATION AND PROPER MATERIAL FIT.
- 5) NO MATERIAL WILL BE CONSIDERED RELEASED FOR FABRICATION UNTIL ALL PERTINENT INFORMATION (i.e., COLOR, DIMENSIONS, MATERIAL CONFIGURATION) HAS BEEN RECEIVED BY GARLAND.
- 6) GARLAND MUST HAVE "APPROVED" SHOP DRAWINGS WITH AUTHORIZATION TO RELEASE THE MATERIAL FOR FABRICATION AS INDICATED BY A CUSTOMER AUTHORIZATION SIGNATURE.
- 7) INDICATE THE DATE MATERIALS WILL BE REQUIRED AT THE PROJECT LOCATION:

CUSTOMER AUTHORIZATION SIGNATURE: _____ (sign here)

DATE: _____ (date here)

ERECTOR NOTE:

- STEEL PANELS: SAW OR TORCH CUTS ARE NOT ALLOWED. ONLY SHEARING ACTION MAY BE USED, AS ACHIEVED WITH HAND SNIPS/SHEARS OR ELECTRIC SHEARS
- ALUMINUM PANELS: TORCH CUTS ARE NOT ALLOWED. SHEARING ACTION RECOMMENDED TO CUT ALUMINUM. SAW CUTS PERMITTED, HOWEVER, CARE MUST BE TAKEN TO PREVENT BURNING PAINT FINISH, EDGE BURS AND SAW DEBRIS BEING DEPOSITED ON FINISHED PRODUCT.
- ALL PANELS, BATTENS AND SEAMS TO HAVE FIELD BENT TRANSITIONS. (EXAMPLE: CHANGE OF PLANE)
- ALL RELATED PANEL TRIM TO HAVE FIELD TRANSITIONS AND FIELD FABRICATED MITERS. (EXAMPLE: TRANSITION BETWEEN RIDGE TO RAKE TRIM OR RAKE TO VERTICAL CORNER TRIM) (EXAMPLE: MITERS - 90° CORNERS FOR SILL TRIM)
- ALL CONTINUOUS LENGTHS OF PANEL TRIM TO BE NOTCHED, LAPPED AND SEALED 3" MINIMUM AT LAP SPLICES. (TYPICAL)
- PANEL TRIM'S THERMAL MOVEMENT OCCURS AT LAP SPLICES DO NOT ANCHOR TRIM AT LAP SPLICES. (TYPICAL)

FINISH SPECIFICATIONS:

ROOF PANEL: R-MER SPAN

MATERIAL: 22GA GALV. STEEL

FINISH: FLUOROCARBON-70% RESIN (Kynar 500)

COLOR: WHITE

FOR REVIEW

REV: 1 DATE: 11/22/2023

DATE: ---/---/---

DATE: ---/---/---

DATE: ---/---/---

TRUCKEE TAHOE AIRPORT HANGAR REPAIRS
10356 TRUCKEE AIRPORT RD., TRUCKEE, CA 96161

ARCHITECT: NA

DATE: 10/23/23

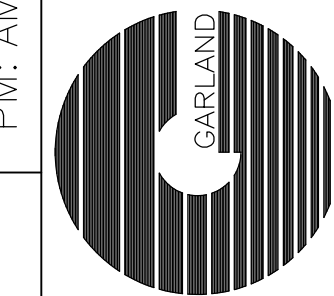
PM: AMANDA TANT

CUSTOMER: "TBD"

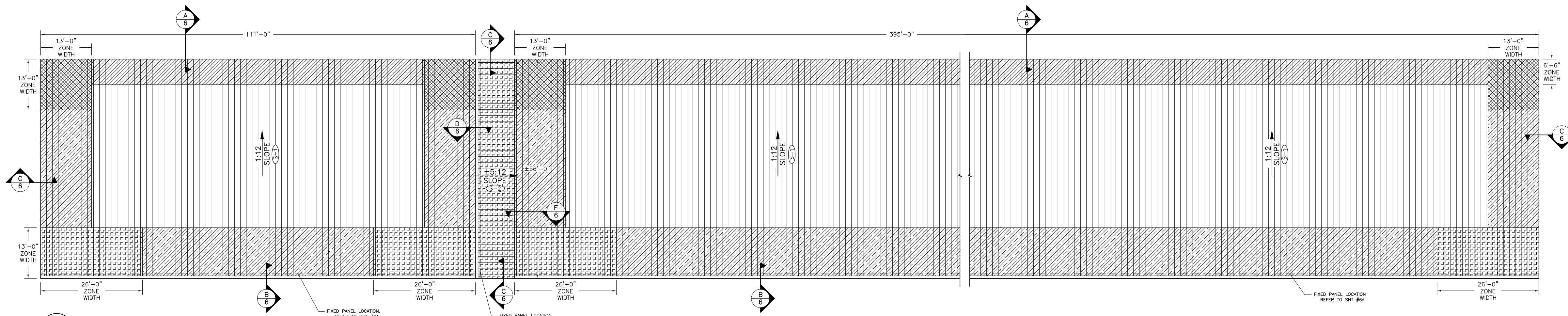
AGENT: TIM SAMANIEGO

DWG BY: MEC

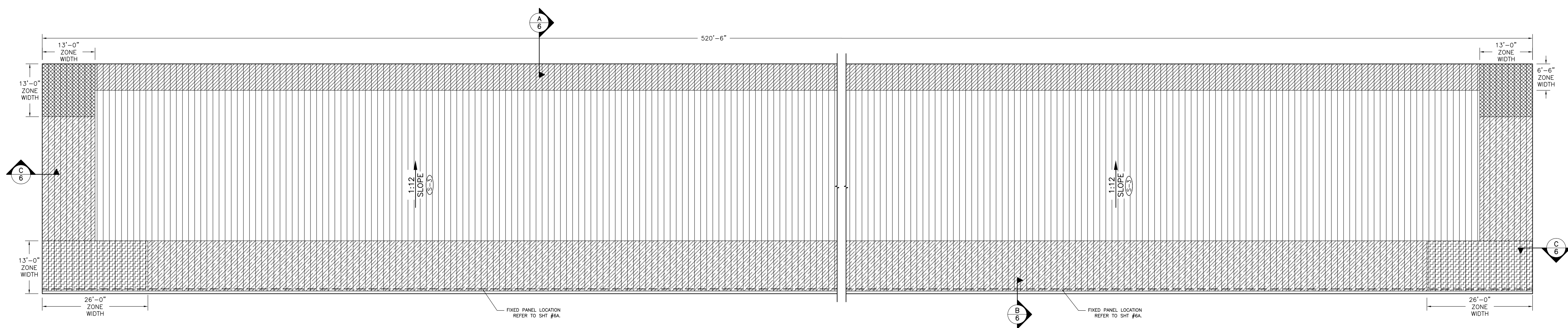
CHK BY: MB



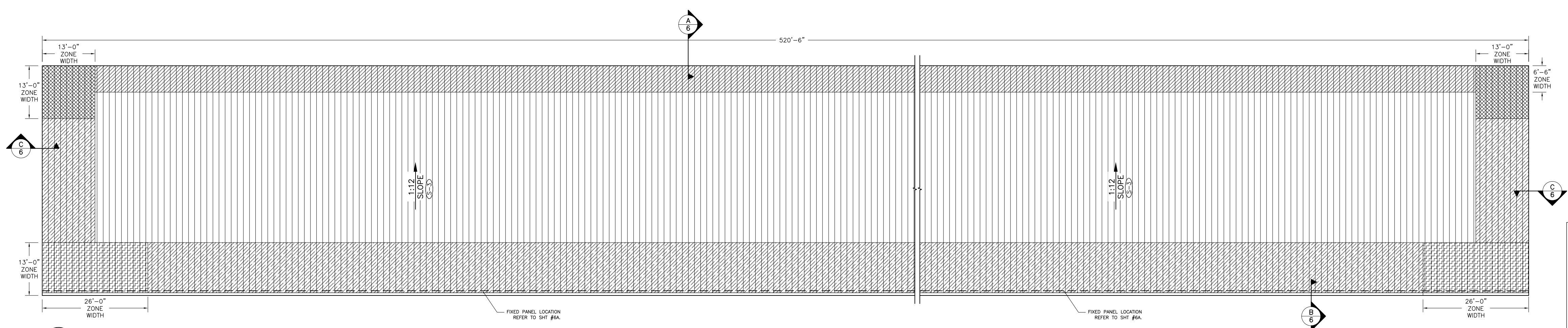
THE GARLAND COMPANY INC.
3800 EAST 91ST STREET - CLEVELAND, OHIO 44105-2197
PHONE (800) 321-9336 / FAX (216) 641-0633



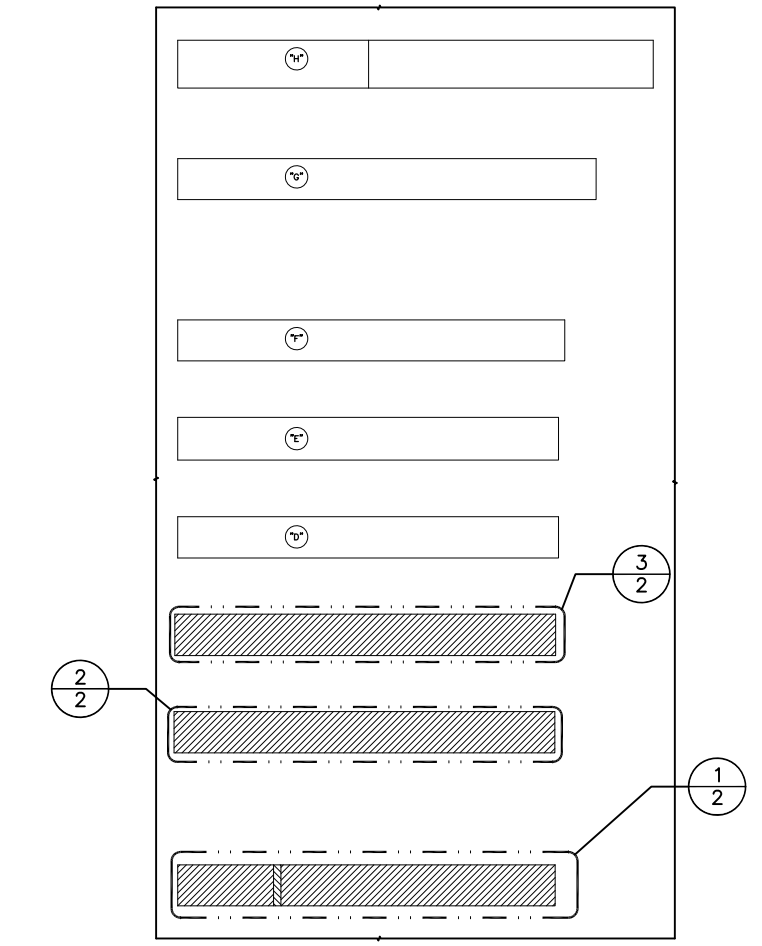
1 ROOF PANEL - HANGER A
2 ARCH. REF. : NA



2 ROOF PLAN - HANGER B
2 ARCH. REF. : NA



3 ROOF PLAN - HANGER C
2 ARCH. REF. : NA



KEY PLAN

TRIM LAP DETAILS:
ERECTOR TO COORDINATE WITH MANUFACTURER'S DETAILS.
INSTALLATION SUPPORT TAB
*REFER TO TRIM LAP DETAILS IN THIS SECTION.

SMACNA GUIDELINES:
GARLAND RECOMMENDS FOLLOWING SMACNA GUIDELINES FOR THE SIZING AND LOCATION OF GUTTERS, DOWNSPOUTS, AND EXPANSION JOINTS.

ERECTOR NOTE:
ALL MATERIAL SUPPLIED IS 22GA GALV. STEEL.
ALL TRIM COMPONENTS ARE TO BE FABRICATED BY THE ERECTOR FROM FLAT SHEET SUPPLIED.

SUBSTRATE LENGTH SCHEDULE:

PROVIDED BELOW ARE ESTIMATED SUBSTRATE LENGTHS (NOT PANEL LENGTHS), AS PROVIDED TO GARLAND OR AS SCALED BY GARLAND FROM CONSTRUCTION DRAWINGS.
• THESE SUBSTRATE LENGTHS ARE PROVIDED FOR REVIEW AND **MUST BE FIELD VERIFIED**.
• ERECTOR MUST THEN REFERENCE THE APPROPRIATE DETAILS WITHIN THE SHOP DRAWINGS TO CALCULATE THE CORRECT ROOF PANEL LENGTHS REQUIRED. YOU MAY NOTE THESE CALCULATED PANEL LENGTHS IN THE SPACES PROVIDED BELOW.
• ERECTOR TO COORDINATE JOB SITE CONDITIONS WITH SHOP DRAWING DETAILS TO DETERMINE REQUIRED PANEL QUANTITIES AND LENGTHS. THIS ITEMIZED CUT IS TO BE FORWARDED TO GARLAND FOR MATERIAL RELEASE AND PRODUCTION.

DO NOT USE THE SUBSTRATE LENGTHS AS THE PANEL LENGTHS!

SUBSTRATE DESIGNATION:	SUBSTRATE LENGTH:	CALCULATE:	REQUIRED PANEL LENGTHS:
S-1	±56'-2 7/8"	NOTE: Use the shop drawing details to adjust the substrate length dimension to the panel length required.	=
S-2	±10'-11 3/16"		=
S-3	±56'-8 7/8"		=
			=
			=
			=
			=
			=

IMPORTANT READ:
THE ERECTOR HAS THE SOLE RESPONSIBILITY TO COORDINATE THE SHOP DRAWINGS WITH THE ACTUAL JOB SITE CONDITIONS TO DETERMINE AN ACCURATE AND ITEMIZED MATERIAL 'CUT LIST'. THIS IS CRUCIAL FOR MATERIAL RELEASE AND PANEL PRODUCTION.

PANEL CLIP SPACING

PROVIDED BELOW ARE THE **MAXIMUM** ALLOWABLE ROOF PANEL CLIP SPACINGS.
ROOF PANEL CLIPS MAY BE INSTALLED CLOSER TOGETHER THAN THE ALLOWABLE O.C. MAXIMUMS IF JOB-SITE CONDITIONS REQUIRE. HOWEVER, PANEL CLIPS MUST **'NOT'** EXCEED THE MANUFACTURER'S PROVIDED O.C. MAXIMUMS.

ASCE 7-16 COMPONENTS and CLADDING - METHOD 2

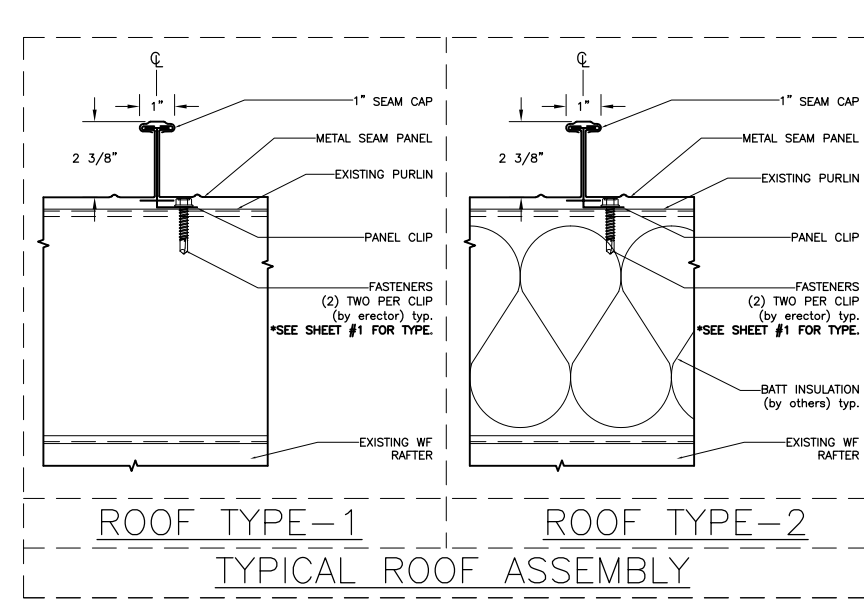
BASIC WIND SPEED: 130 MPH WIND IMPORTANCE FACTOR (I): III(1.15)
WIND EXPOSURE: D INTERNAL PRESSURE COEFFICIENT: ±0.55

ZONE DESIGNATION:	ZONE TYPE:	DESCRIPTION:	ROOF PRESSURES:	CLIP SPACING:
1	ZONE 1	(Field of Roof)	39.4 PSF	5'-0" o.c. MAX.
2	ZONE 2	(Perimeters)	44.2 PSF	5'-0" o.c. MAX.
3	ZONE 3	(Corners)	56.2 PSF	4'-4" o.c. MAX.
2'	ZONE 2'	(Perimeters) HIGH WIND	51.4 PSF	4'-8" o.c. MAX.
3'	ZONE 3'	(Corners) HIGH WIND	75.3 PSF	3'-1" o.c. MAX.

FIXED PANEL CLIP LOCATIONS:

LINE TYPE:	DESCRIPTION:	EXPLANATION:
---	PANEL FIXED LOCATION	DESIGNATES A ROW OF 'FIXED' PANEL CLIPS.

NOTE: "INSTALL PANELS AND INSULATION ACCORDING TO CURRENT CONDITIONS".



ALL ROOF DIMENSIONS MUST BE FIELD VERIFIED

FOR REVIEW

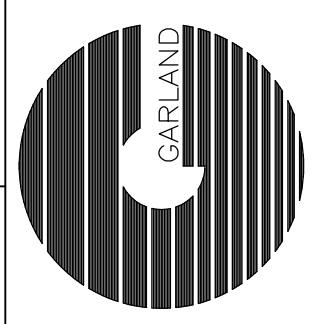
TRUCKEE TAHOE AIRPORT HANGAR REPAIRS
10356 TRUCKEE AIRPORT RD., TRUCKEE, CA 96161

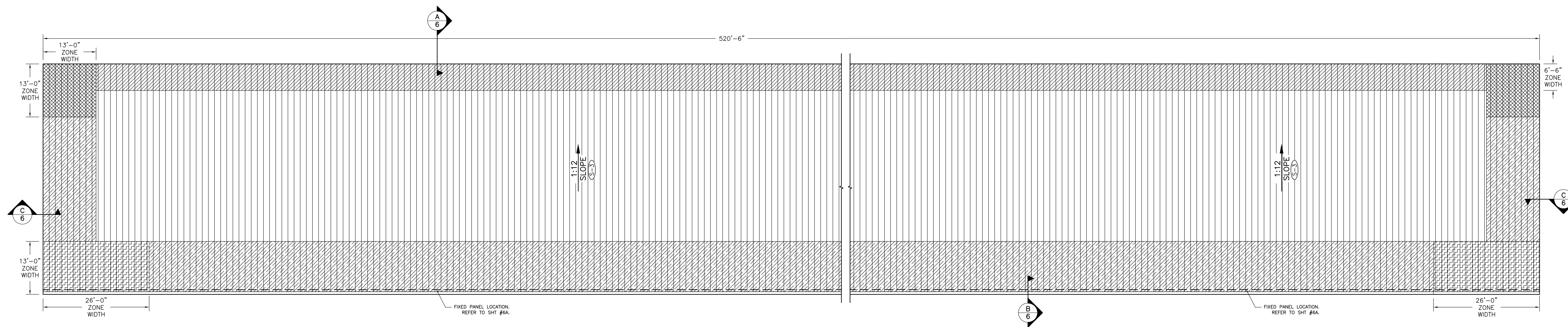
ARCHITECT: NA
DATE: 10/23/23
DWG BY: MEC
CHK BY: MB

CUSTOMER: "TBD"
AGENT: TIM SAMANIEGO

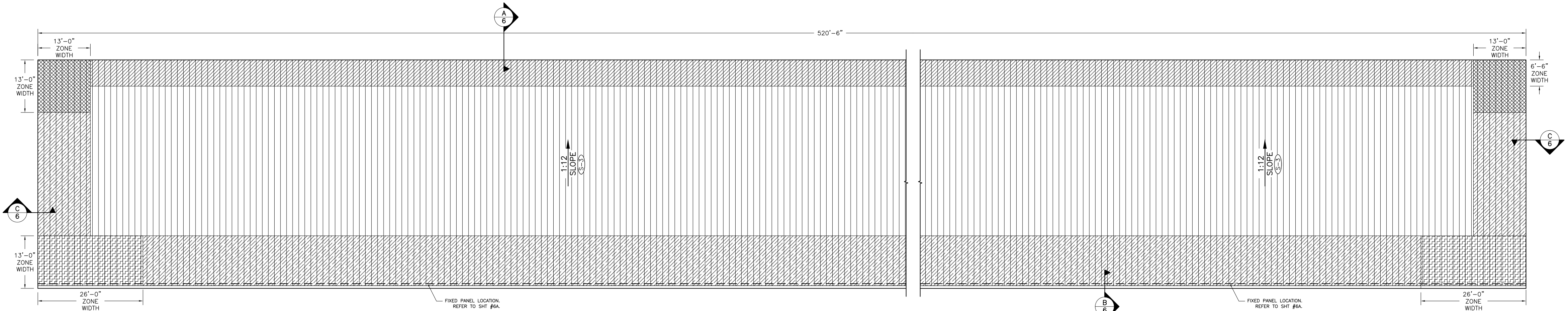
REV: 1 DATE: 11/22/2023
2 DATE: ---/---/---
3 DATE: ---/---/---
4 DATE: ---/---/---

THE GARLAND COMPANY INC.
3800 EAST 91ST STREET - CLEVELAND, OHIO 44105-2197
PHONE (800) 321-9336 / FAX (216) 641-0633

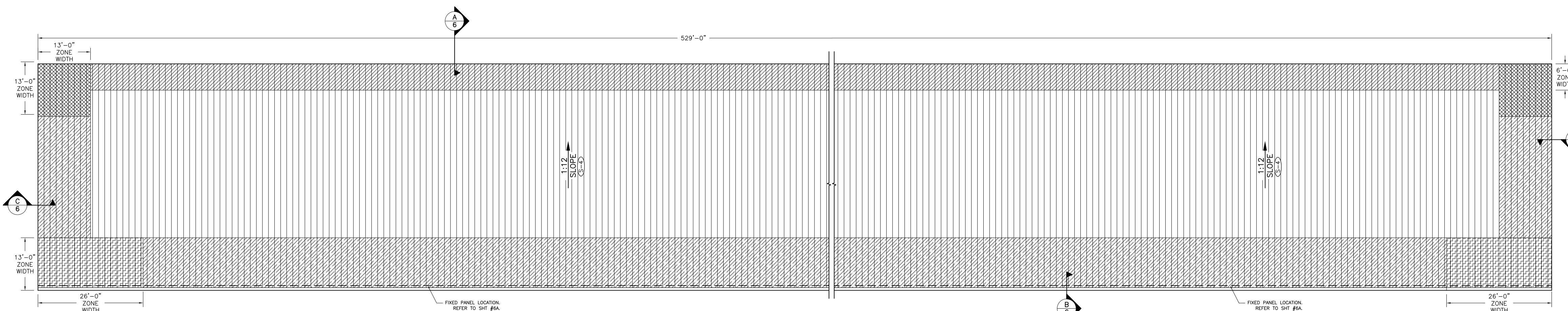




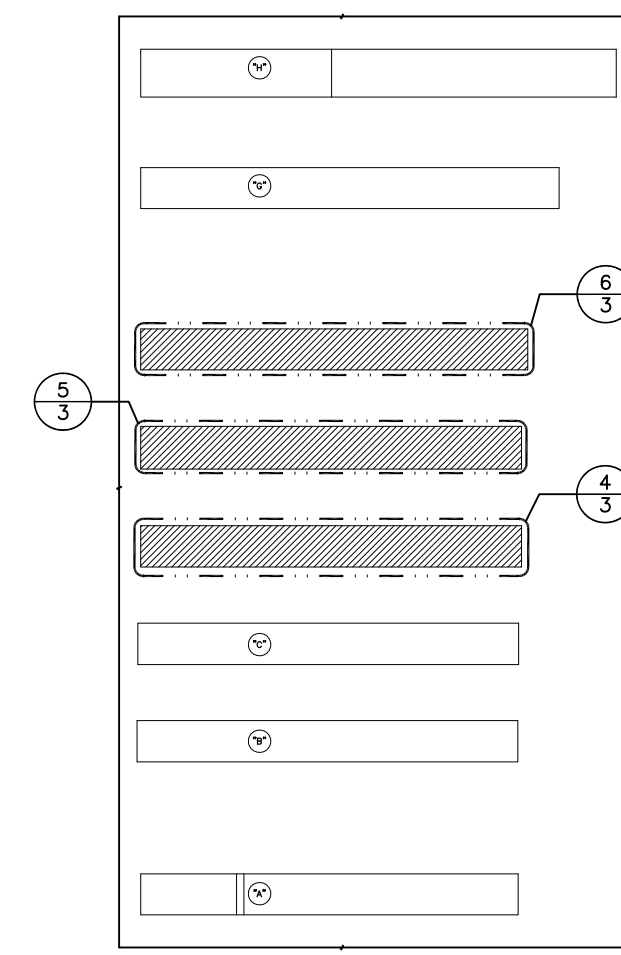
4 ROOF PLAN - HANGER D
3 ARCH. REF. : NA



5 ROOF PLAN - HANGER E
3 ARCH. REF. : NA



6 ROOF PLAN - HANGER F
3 ARCH. REF. : NA



KEY PLAN

TRIM LAP DETAILS:
ERECTOR TO COORDINATE WITH MANUFACTURER'S DETAILS.
INSTALLATION SUPPORT TAB
*REFER TO TRIM LAP DETAILS IN THIS SECTION.

SMACNA GUIDELINES:
GARLAND RECOMMENDS FOLLOWING SMACNA GUIDELINES FOR THE SIZING AND LOCATION OF GUTTERS, DOWNSPOUTS, AND EXPANSION JOINTS.

ERECTOR NOTE:
ALL MATERIAL SUPPLIED IS 22GA GALV. STEEL. ALL TRIM COMPONENTS ARE TO BE FABRICATED BY THE ERECTOR FROM FLAT SHEET SUPPLIED.

SUBSTRATE LENGTH SCHEDULE:

PROVIDED BELOW ARE ESTIMATED SUBSTRATE LENGTHS (NOT PANEL LENGTHS), AS PROVIDED TO GARLAND OR AS SCALED BY GARLAND FROM CONSTRUCTION DRAWINGS.

- THESE SUBSTRATE LENGTHS ARE PROVIDED FOR REVIEW AND **MUST BE FIELD VERIFIED.**
- ERECTOR MUST THEN REFERENCE THE APPROPRIATE DETAILS WITHIN THE SHOP DRAWINGS TO CALCULATE THE CORRECT ROOF PANEL LENGTHS REQUIRED. YOU MAY NOTE THESE CALCULATED PANEL LENGTHS IN THE SPACES PROVIDED BELOW.
- ERECTOR TO COORDINATE JOB SITE CONDITIONS WITH SHOP DRAWING DETAILS TO DETERMINE REQUIRED PANEL QUANTITIES AND LENGTHS. THIS ITEMIZED CUT IS TO BE FORWARDED TO GARLAND FOR MATERIAL RELEASE AND PRODUCTION.

DO NOT USE THE SUBSTRATE LENGTHS AS THE PANEL LENGTHS!

SUBSTRATE DESIGNATION:	SUBSTRATE LENGTH:	CALCULATE:	REQUIRED PANEL LENGTHS:
S-3	±56'-8 7/8"	NOTE: Use the shop drawing details to adjust the substrate length dimension to the panel length required.	=
S-4	±56'-2 7/8"		=
	---		=
	---		=
	---		=
	---		=
	---		=
	---		=

IMPORTANT READ:
THE ERECTOR HAS THE SOLE RESPONSIBILITY TO COORDINATE THE SHOP DRAWINGS WITH THE ACTUAL JOB SITE CONDITIONS TO DETERMINE AN ACCURATE AND ITEMIZED MATERIAL 'CUT LIST'. THIS IS CRUCIAL FOR MATERIAL RELEASE AND PANEL PRODUCTION.

PANEL CLIP SPACING

PROVIDED BELOW ARE THE **MAXIMUM** ALLOWABLE ROOF PANEL CLIP SPACINGS.

ROOF PANEL CLIPS MAY BE INSTALLED CLOSER TOGETHER THAN THE ALLOWABLE O.C. MAXIMUMS IF JOB-SITE CONDITIONS REQUIRE. HOWEVER, PANEL CLIPS MUST **"NOT"** EXCEED THE MANUFACTURER'S PROVIDED O.C. MAXIMUMS.

ASCE 7-16 COMPONENTS and CLADDING - METHOD 2

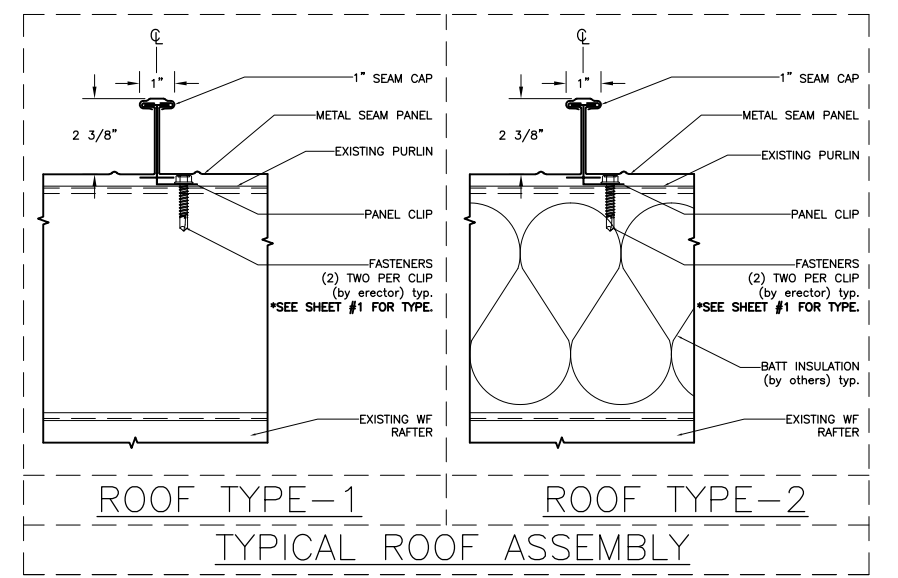
BASIC WIND SPEED: 130 MPH WIND IMPORTANCE FACTOR (I): III(1.15)
WIND EXPOSURE: D INTERNAL PRESSURE COEFFICIENT: ±0.55

ZONE DESIGNATION:	ZONE TYPE:	DESCRIPTION:	ROOF PRESSURES:	CLIP SPACING:
[Symbol]	ZONE 1	(Field of Roof)	39.4 PSF	5'-0" o.c. MAX.
[Symbol]	ZONE 2	(Perimeters)	44.2 PSF	5'-0" o.c. MAX.
[Symbol]	ZONE 3	(Corners)	56.2 PSF	4'-4" o.c. MAX.
[Symbol]	ZONE 2'	(Perimeters) HIGH WIND	51.4 PSF	4'-8" o.c. MAX.
[Symbol]	ZONE 3'	(Corners) HIGH WIND	75.3 PSF	3'-1" o.c. MAX.

FIXED PANEL CLIP LOCATIONS:

LINE TYPE:	DESCRIPTION:	EXPLANATION:
---	PANEL FIXED LOCATION	DESIGNATES A ROW OF 'FIXED' PANEL CLIPS.

NOTE:
"INSTALL PANELS AND INSULATION ACCORDING TO CURRENT CONDITIONS".



ALL ROOF DIMENSIONS MUST BE FIELD VERIFIED

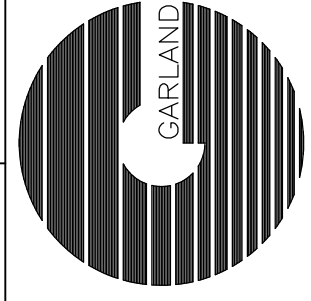
FOR REVIEW

TRUCKEE TAHOE AIRPORT HANGAR REPAIRS
10356 TRUCKEE AIRPORT RD., TRUCKEE, CA 96161

ARCHITECT: NA
DATE: 10/23/23
DWG BY: MEC
CHK BY: MB

CUSTOMER: "TBD"
AGENT: TIM SAMANIEGO

THE GARLAND COMPANY INC.
3800 EAST 91ST STREET - CLEVELAND, OHIO 44105-2197
PHONE (800) 321-9336 / FAX (216) 641-0633

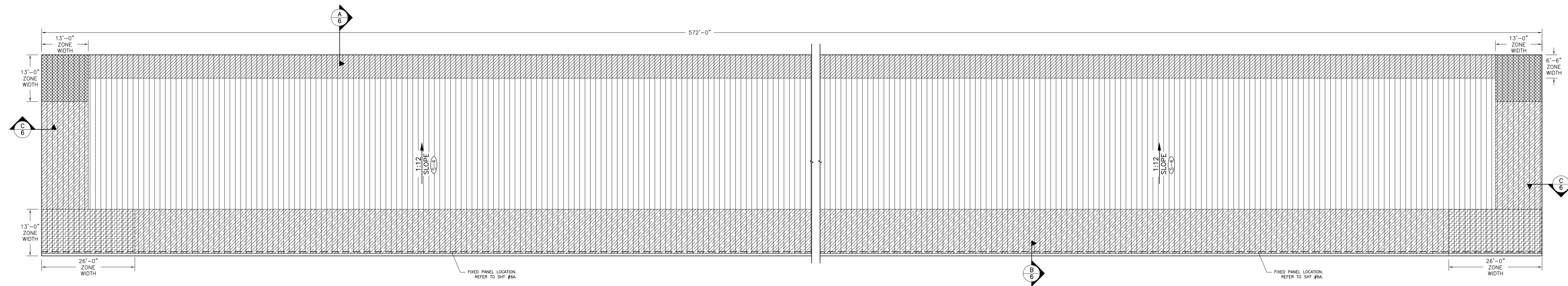


REV: 1 DATE: 11/22/2023

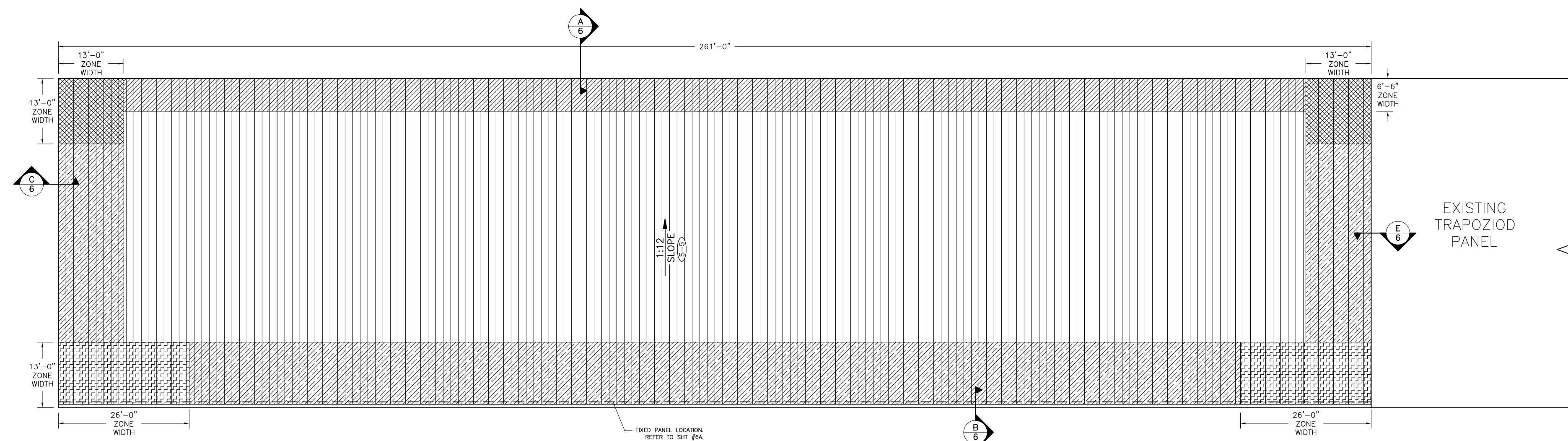
DATE: --/--/--

DATE: --/--/--

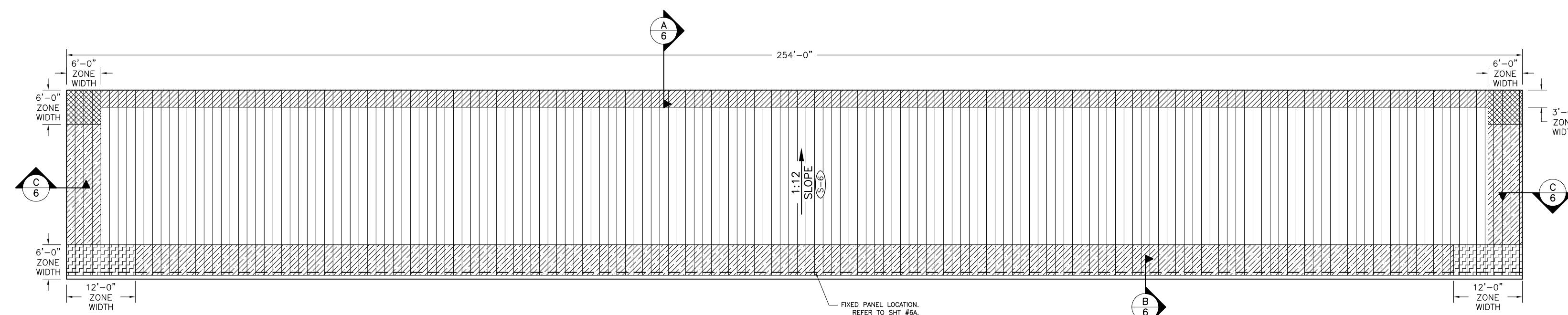
DATE: --/--/--



7 ROOF PLAN - HANGER G
4 ARCH. REF. : NA



8 ROOF PLAN - HANGER H
4 ARCH. REF. : NA



9 ROOF PLAN - HANGER J
4 ARCH. REF. : NA

TRIM LAP DETAILS:
ERECTOR TO COORDINATE WITH
MANUFACTURER'S DETAILS.
INSTALLATION SUPPORT TAB
*REFER TO TRIM LAP DETAILS
IN THIS SECTION.

SMACNA GUIDELINES:
GARLAND RECOMMENDS FOLLOWING SMACNA
GUIDELINES FOR THE SIZING AND LOCATION OF
GUTTERS, DOWNSPOUTS, AND EXPANSION JOINTS.

ERECTOR NOTE:
ALL MATERIAL SUPPLIED IS 22GA GALV. STEEL.
ALL TRIM COMPONENTS ARE TO BE FABRICATED BY
THE ERECTOR FROM FLAT SHEET SUPPLIED.

PANEL CLIP SPACING - (HANGER J)

PROVIDED BELOW ARE THE **MAXIMUM** ALLOWABLE ROOF PANEL CLIP SPACINGS.
ROOF PANEL CLIPS MAY BE INSTALLED CLOSER TOGETHER THAN THE ALLOWABLE O.C.
MAXIMUMS IF JOB-SITE CONDITIONS REQUIRE. HOWEVER, PANEL CLIPS MUST "NOT" EXCEED
THE MANUFACTURER'S PROVIDED O.C. MAXIMUMS.

ASCE 7-16 COMPONENTS and CLADDING - METHOD 2

BASIC WIND SPEED: 130 MPH WIND IMPORTANCE FACTOR (I): III(1.15)
WIND EXPOSURE: D INTERNAL PRESSURE COEFFICIENT: ±0.55

ZONE DESIGNATION:	ZONE TYPE:	DESCRIPTION:	ROOF PRESSURES:	CLIP SPACING:
[Blank]	ZONE 1	(Field of Roof)	39.4 PSF	5'-0" o.c. MAX.
[Diagonal Hatching]	ZONE 2	(Perimeters)	44.2 PSF	5'-0" o.c. MAX.
[Cross Hatching]	ZONE 3	(Corners)	56.2 PSF	4'-4" o.c. MAX.
[Diagonal Hatching]	ZONE 2'	(Perimeters) HIGH WIND	51.4 PSF	4'-8" o.c. MAX.
[Cross Hatching]	ZONE 3'	(Corners) HIGH WIND	75.3 PSF	3'-1" o.c. MAX.

FIXED PANEL CLIP LOCATIONS:

LINE TYPE:	DESCRIPTION:	EXPLANATION:
---	PANEL FIXED LOCATION	DESIGNATES A ROW OF 'FIXED' PANEL CLIPS.

PANEL CLIP SPACING - (HANGERS G & H)

PROVIDED BELOW ARE THE **MAXIMUM** ALLOWABLE ROOF PANEL CLIP SPACINGS.
ROOF PANEL CLIPS MAY BE INSTALLED CLOSER TOGETHER THAN THE ALLOWABLE O.C.
MAXIMUMS IF JOB-SITE CONDITIONS REQUIRE. HOWEVER, PANEL CLIPS MUST "NOT" EXCEED
THE MANUFACTURER'S PROVIDED O.C. MAXIMUMS.

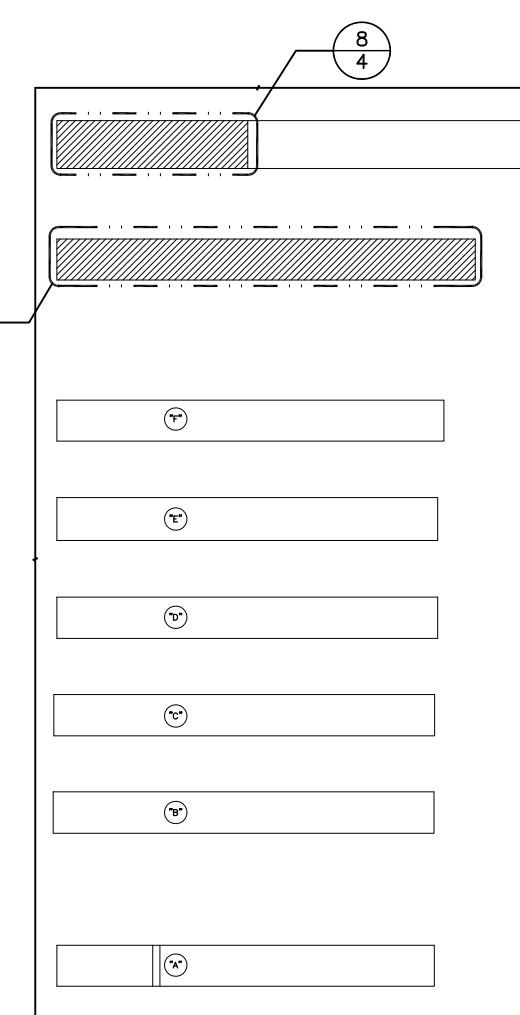
ASCE 7-16 COMPONENTS and CLADDING - METHOD 2

BASIC WIND SPEED: 130 MPH WIND IMPORTANCE FACTOR (I): III(1.15)
WIND EXPOSURE: D INTERNAL PRESSURE COEFFICIENT: ±0.55

ZONE DESIGNATION:	ZONE TYPE:	DESCRIPTION:	ROOF PRESSURES:	CLIP SPACING:
[Blank]	ZONE 1	(Field of Roof)	39.4 PSF	5'-0" o.c. MAX.
[Diagonal Hatching]	ZONE 2	(Perimeters)	44.2 PSF	5'-0" o.c. MAX.
[Cross Hatching]	ZONE 3	(Corners)	56.2 PSF	4'-4" o.c. MAX.
[Diagonal Hatching]	ZONE 2'	(Perimeters) HIGH WIND	51.4 PSF	4'-8" o.c. MAX.
[Cross Hatching]	ZONE 3'	(Corners) HIGH WIND	75.3 PSF	3'-1" o.c. MAX.

FIXED PANEL CLIP LOCATIONS:

LINE TYPE:	DESCRIPTION:	EXPLANATION:
---	PANEL FIXED LOCATION	DESIGNATES A ROW OF 'FIXED' PANEL CLIPS.



KEY PLAN

SUBSTRATE LENGTH SCHEDULE:

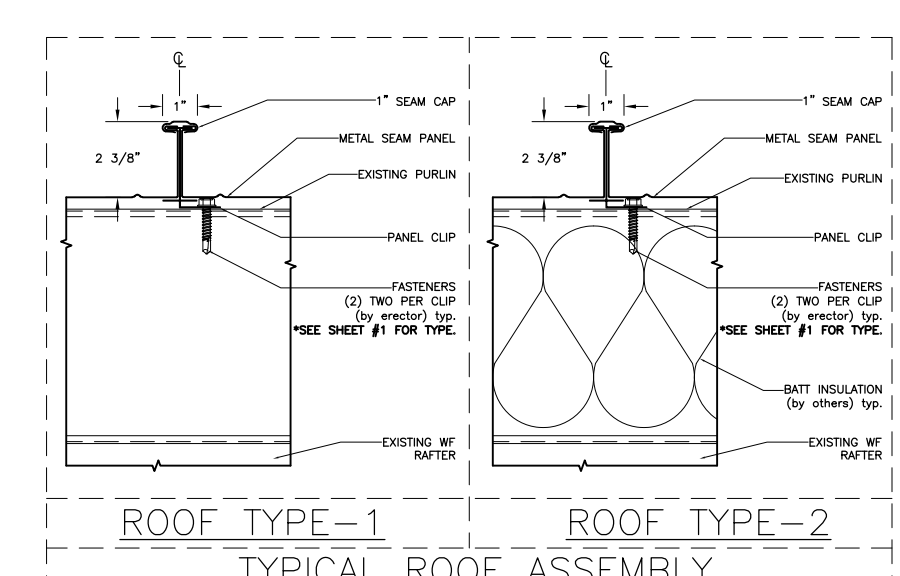
- PROVIDED BELOW ARE **ESTIMATED SUBSTRATE LENGTHS (NOT PANEL LENGTHS)**, AS PROVIDED TO GARLAND OR AS SCALED BY GARLAND FROM CONSTRUCTION DRAWINGS.
- THESE SUBSTRATE LENGTHS ARE PROVIDED FOR REVIEW AND **MUST BE FIELD VERIFIED**.
 - ERECTOR MUST THEN REFERENCE THE APPROPRIATE DETAILS WITHIN THE SHOP DRAWINGS TO CALCULATE THE CORRECT ROOF PANEL LENGTHS REQUIRED. YOU MAY NOTE THESE CALCULATED PANEL LENGTHS IN THE SPACES PROVIDED BELOW.
 - ERECTOR TO COORDINATE JOB SITE CONDITIONS WITH SHOP DRAWING DETAILS TO DETERMINE REQUIRED PANEL QUANTITIES AND LENGTHS. THIS ITEMIZED CUT IS TO BE FORWARDED TO GARLAND FOR MATERIAL RELEASE AND PRODUCTION.

DO NOT USE THE SUBSTRATE LENGTHS AS THE PANEL LENGTHS!

SUBSTRATE DESIGNATION:	SUBSTRATE LENGTH:	CALCULATE:	REQUIRED PANEL LENGTHS:
S-4	±56'-2 7/8"	NOTE: Use the shop drawing details to adjust the substrate length dimension to the panel length required.	=
S-5	±65'-7 11/16"		=
S-6	±33'-1 15/16"		=
[Blank]	---		=
[Blank]	---		=
[Blank]	---		=
[Blank]	---		=
[Blank]	---		=
[Blank]	---		=

IMPORTANT READ:
THE ERECTOR HAS THE SOLE RESPONSIBILITY TO COORDINATE THE SHOP DRAWINGS WITH THE ACTUAL JOB SITE CONDITIONS TO DETERMINE AN ACCURATE AND ITEMIZED MATERIAL 'CUT LIST'. THIS IS CRUCIAL FOR MATERIAL RELEASE AND PANEL PRODUCTION.

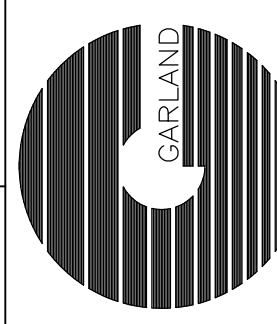
NOTE:
"INSTALL PANELS AND INSULATION ACCORDING TO CURRENT CONDITIONS".



FOR REVIEW

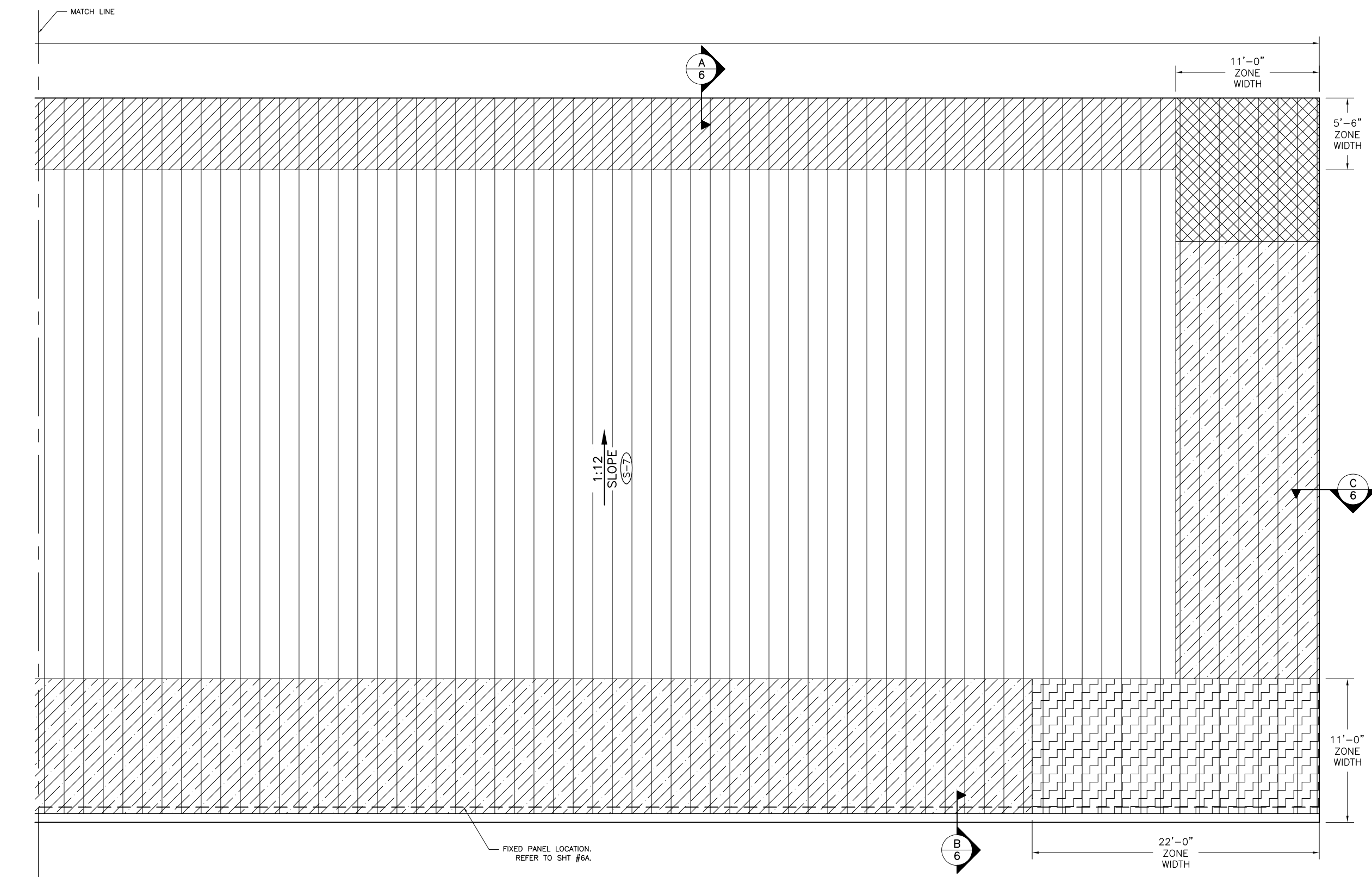
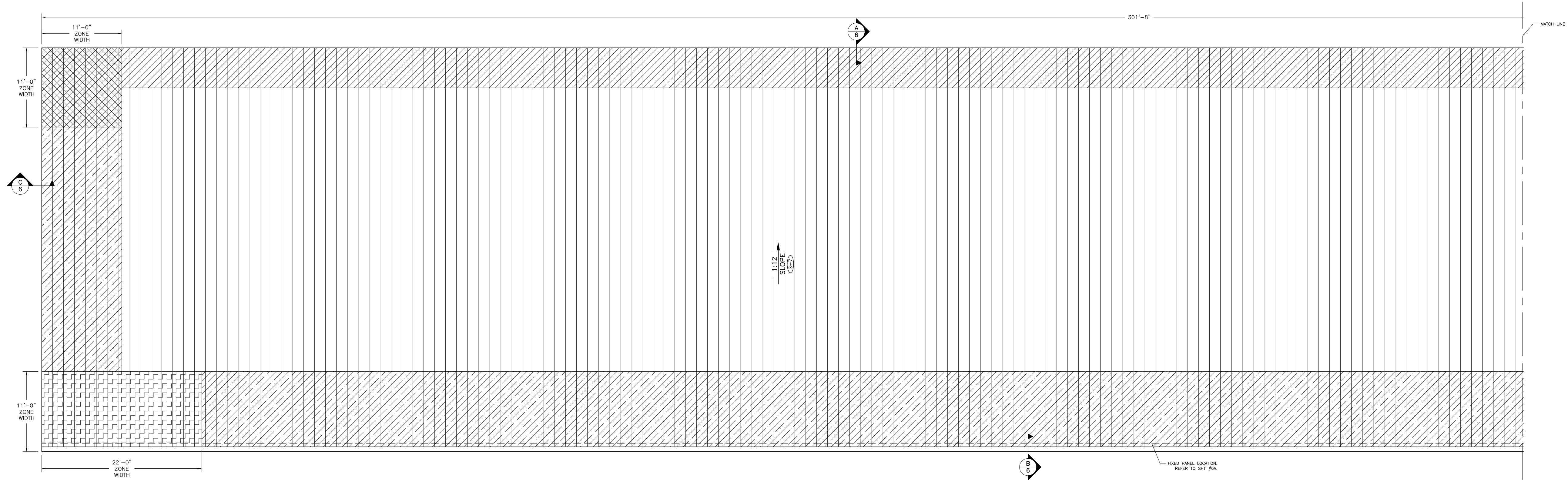
ALL ROOF DIMENSIONS MUST BE FIELD VERIFIED

TRUCKEE TAHOE AIRPORT HANGAR REPAIRS
10356 TRUCKEE AIRPORT RD., TRUCKEE, CA 96161
ARCHITECT: NA
DATE: 10/23/23
DWG BY: MEC
CHK BY: MB
P.M. AMANDA TANT
CUSTOMER: "TBD"
AGENT: TIM SAMANIEGO



THE GARLAND COMPANY INC.
3800 EAST 91ST STREET - CLEVELAND, OHIO 44105-2197
PHONE (800) 321-9336 / FAX (216) 641-0633

REV:	DATE:	DESCRIPTION:
1	11/22/2023	
2	---	---
3	---	---
4	---	---



10 ROOF PLAN - HANGER K
5 ARCH. REF. : NA

TRIM LAP DETAILS:
ERECTOR TO COORDINATE WITH MANUFACTURER'S DETAILS.
INSTALLATION SUPPORT TAB
*REFER TO TRIM LAP DETAILS IN THIS SECTION.

SMACNA GUIDELINES:
GARLAND RECOMMENDS FOLLOWING SMACNA GUIDELINES FOR THE SIZING AND LOCATION OF GUTTERS, DOWNSPOUTS, AND EXPANSION JOINTS.

ERECTOR NOTE:
ALL MATERIAL SUPPLIED IS 22GA CALV. STEEL.
ALL TRIM COMPONENTS ARE TO BE FABRICATED BY THE ERECTOR FROM FLAT SHEET SUPPLIED.

SUBSTRATE LENGTH SCHEDULE:

PROVIDED BELOW ARE ESTIMATED SUBSTRATE LENGTHS (NOT PANEL LENGTHS), AS PROVIDED TO GARLAND OR AS SCALED BY GARLAND FROM CONSTRUCTION DRAWINGS.

- THESE SUBSTRATE LENGTHS ARE PROVIDED FOR REVIEW AND **MUST BE FIELD VERIFIED**.
- ERECTOR MUST THEN REFERENCE THE APPROPRIATE DETAILS WITHIN THE SHOP DRAWINGS TO CALCULATE THE CORRECT ROOF PANEL LENGTHS REQUIRED. YOU MAY NOTE THESE CALCULATED PANEL LENGTHS IN THE SPACES PROVIDED BELOW.
- ERECTOR TO COORDINATE JOB SITE CONDITIONS WITH SHOP DRAWING DETAILS TO DETERMINE REQUIRED PANEL QUANTITIES AND LENGTHS. THIS ITEMIZED CUT IS TO BE FORWARDED TO GARLAND FOR MATERIAL RELEASE AND PRODUCTION.

DO NOT USE THE SUBSTRATE LENGTHS AS THE PANEL LENGTHS!

SUBSTRATE DESIGNATION:	SUBSTRATE LENGTH:	CALCULATE:	REQUIRED PANEL LENGTHS:
(S-7)	±55'-8 3/4"	NOTE: Use the shop drawing details to adjust the substrate length dimension to the panel length required.	=
(S-8)	---		=
(S-9)	---		=
(S-10)	---		=
(S-11)	---		=
(S-12)	---		=
(S-13)	---		=
(S-14)	---		=
(S-15)	---		=

IMPORTANT READ:
THE ERECTOR HAS THE SOLE RESPONSIBILITY TO COORDINATE THE SHOP DRAWINGS WITH THE ACTUAL JOB SITE CONDITIONS TO DETERMINE AN ACCURATE AND ITEMIZED MATERIAL 'CUT LIST'. THIS IS CRUCIAL FOR MATERIAL RELEASE AND PANEL PRODUCTION.

PANEL CLIP SPACING - (HANGER K)

PROVIDED BELOW ARE THE **MAXIMUM** ALLOWABLE ROOF PANEL CLIP SPACINGS.

ROOF PANEL CLIPS MAY BE INSTALLED CLOSER TOGETHER THAN THE ALLOWABLE O.C. MAXIMUMS IF JOB-SITE CONDITIONS REQUIRE. HOWEVER, PANEL CLIPS MUST **"NOT"** EXCEED THE MANUFACTURER'S PROVIDED O.C. MAXIMUMS.

ASCE 7-16 COMPONENTS and CLADDING - METHOD 2

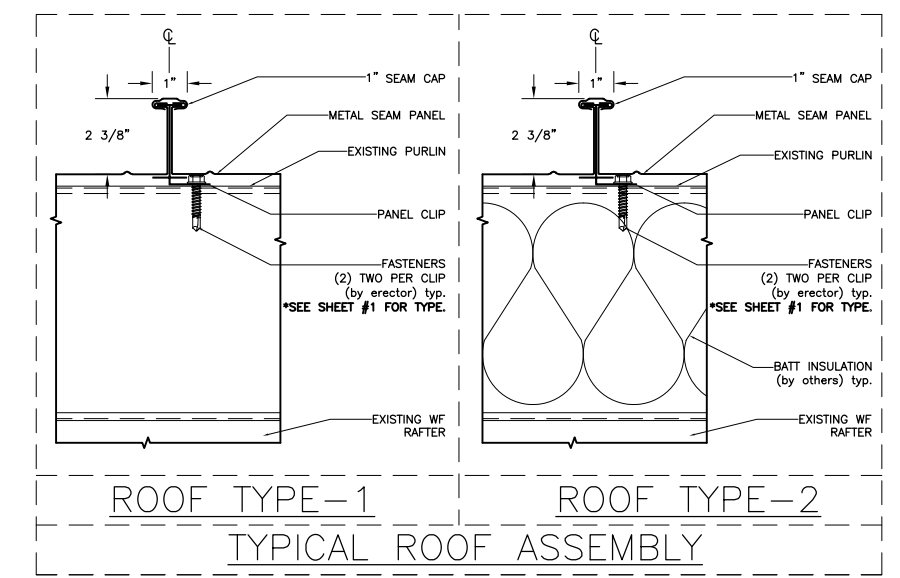
BASIC WIND SPEED: 130 MPH WIND IMPORTANCE FACTOR (I): III(1.15)
WIND EXPOSURE: D INTERNAL PRESSURE COEFFICIENT: ±0.55

ZONE DESIGNATION:	ZONE TYPE:	DESCRIPTION:	ROOF PRESSURES:	CLIP SPACING:
(Field of Roof)	ZONE 1	(Field of Roof)	39.4 PSF	5'-0" o.c. MAX.
(Perimeters)	ZONE 2	(Perimeters)	44.2 PSF	5'-0" o.c. MAX.
(Corners)	ZONE 3	(Corners)	56.2 PSF	4'-4" o.c. MAX.
(Perimeters) HIGH WIND	ZONE 2'	(Perimeters) HIGH WIND	51.4 PSF	4'-8" o.c. MAX.
(Corners) HIGH WIND	ZONE 3'	(Corners) HIGH WIND	75.3 PSF	3'-1" o.c. MAX.

FIXED PANEL CLIP LOCATIONS:

LINE TYPE:	DESCRIPTION:	EXPLANATION:
---	PANEL FIXED LOCATION	DESIGNATES A ROW OF 'FIXED' PANEL CLIPS.

NOTE:
"INSTALL PANELS AND INSULATION ACCORDING TO CURRENT CONDITIONS".

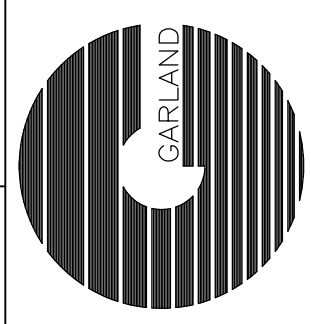


ALL ROOF DIMENSIONS MUST BE FIELD VERIFIED FOR REVIEW

TRUCKEE TAHOE AIRPORT HANGAR REPAIRS
10356 TRUCKEE AIRPORT RD., TRUCKEE, CA 96161

ARCHITECT: NA
DATE: 10/23/23
DWG BY: MEC
CHK BY: MB

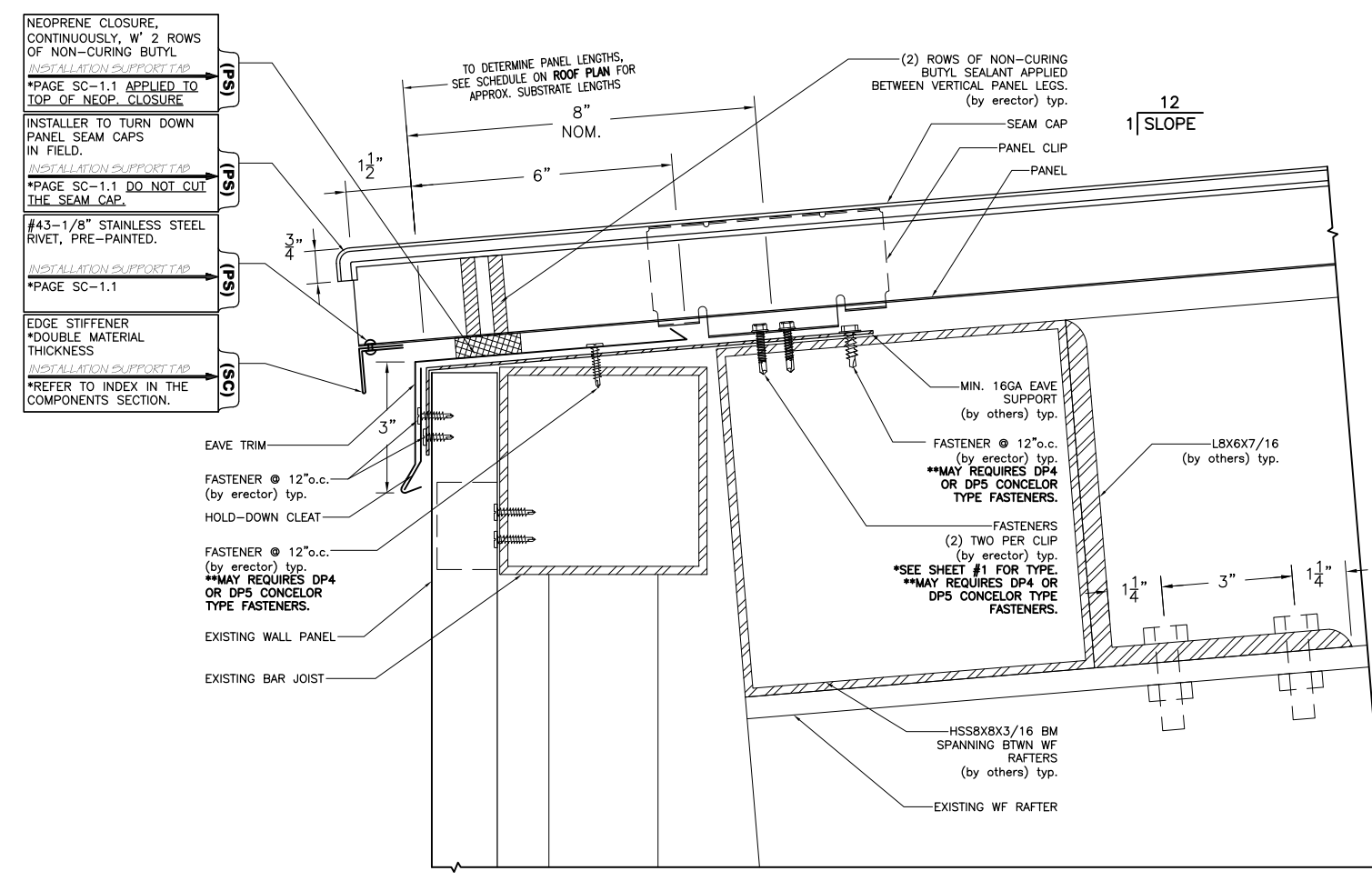
PM: AMANDA TANT
CUSTOMER: "TBD"
AGENT: TIM SAMANIEGO



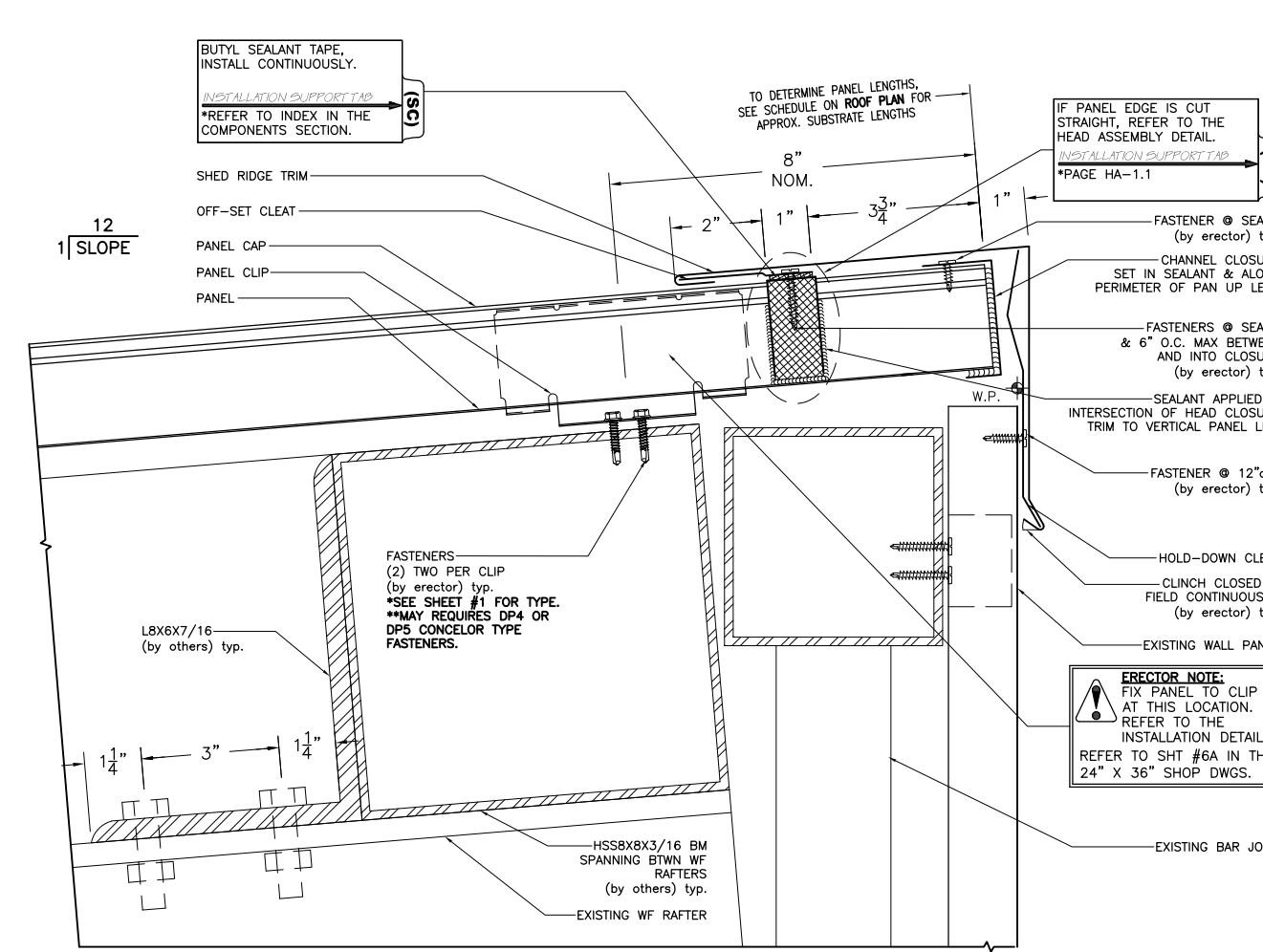
THE GARLAND COMPANY INC.
3800 EAST 91ST STREET - CLEVELAND, OHIO 44105-2197
PHONE (800) 321-9336 / FAX (216) 641-0633

REV: 1 DATE: 11/22/2023

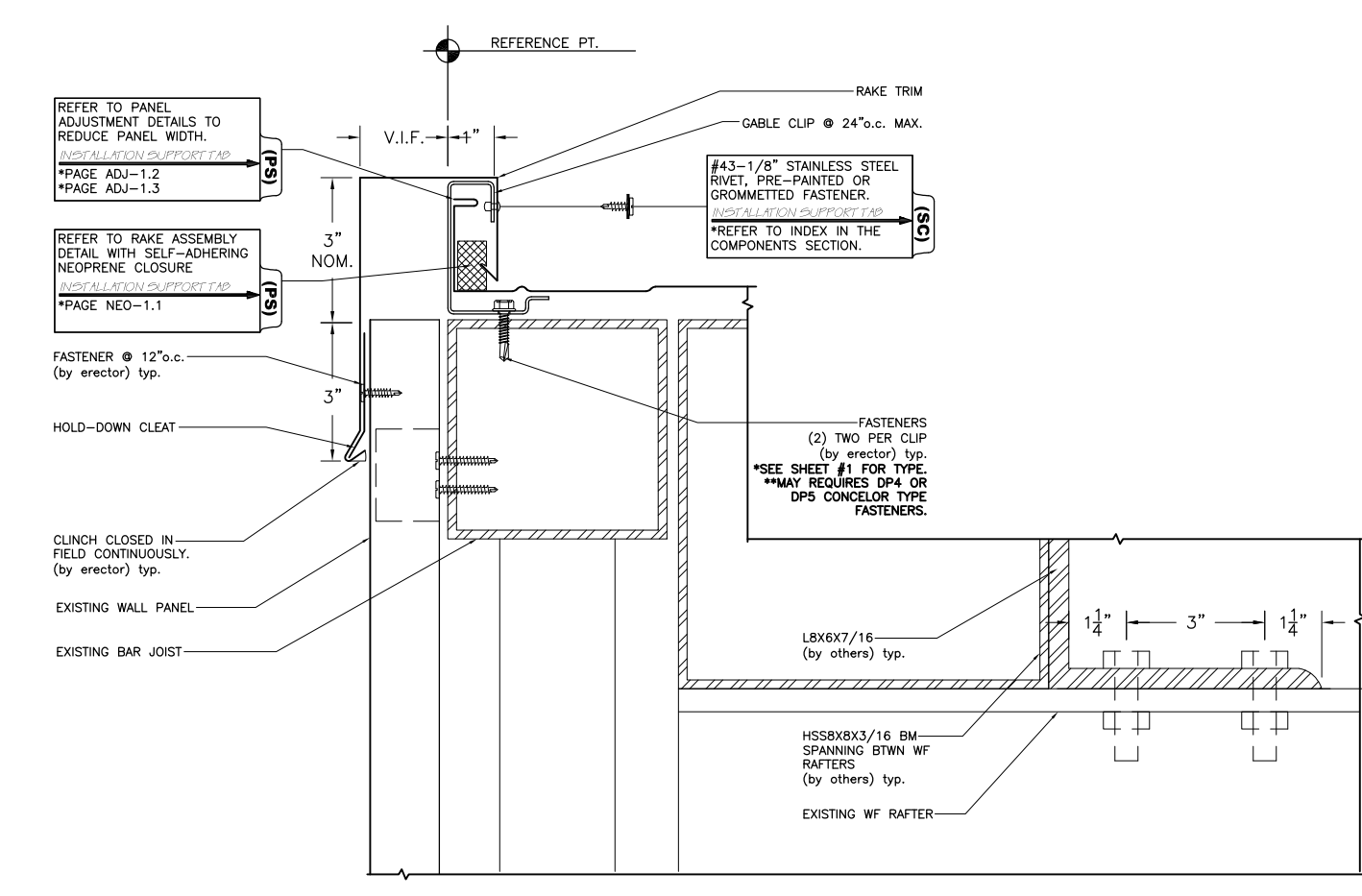
2	DATE: --/--/--
3	DATE: --/--/--
4	DATE: --/--/--



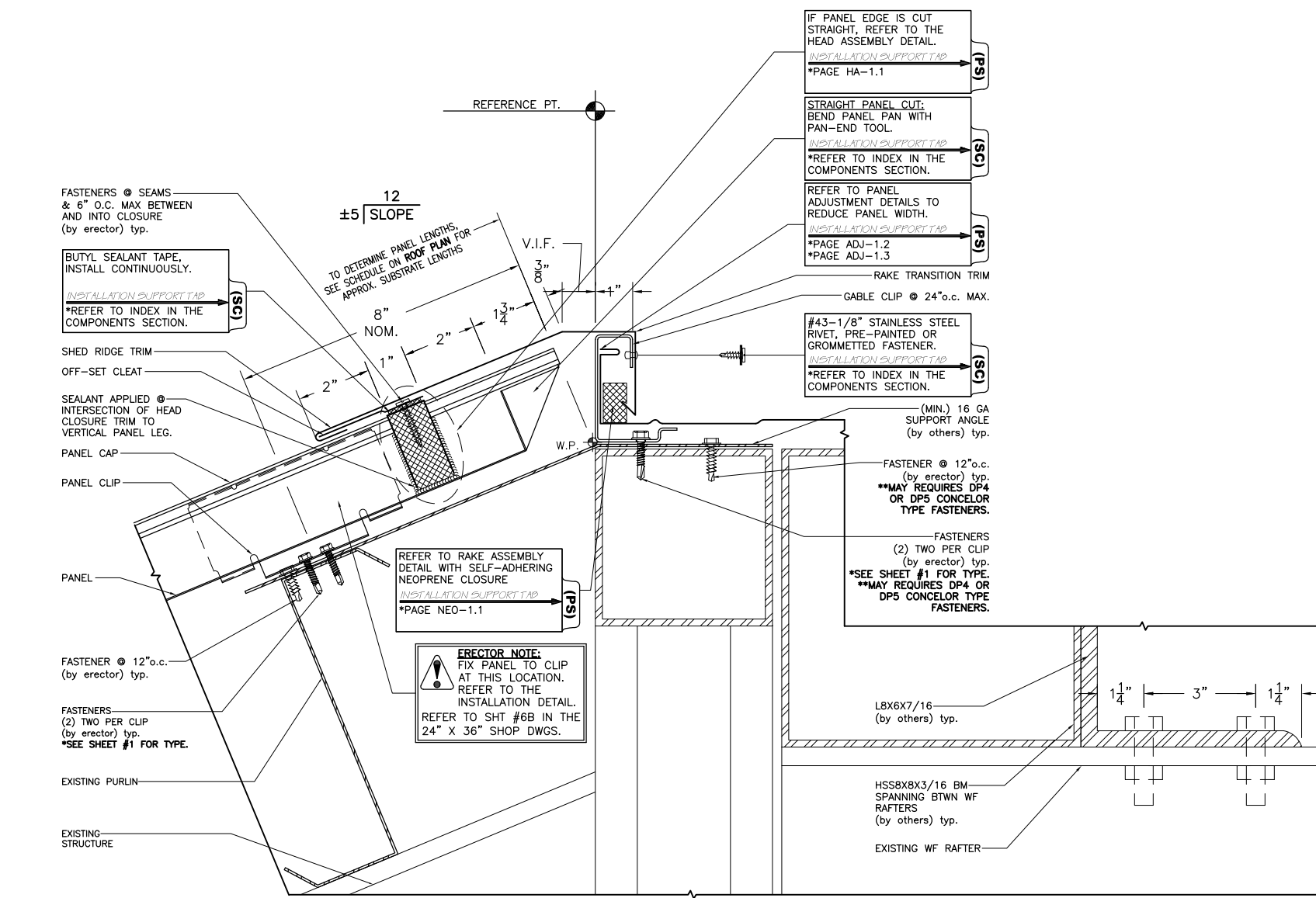
A EXPANDING EAVE DETAIL
6 ARCH. REF. : 2/S-200



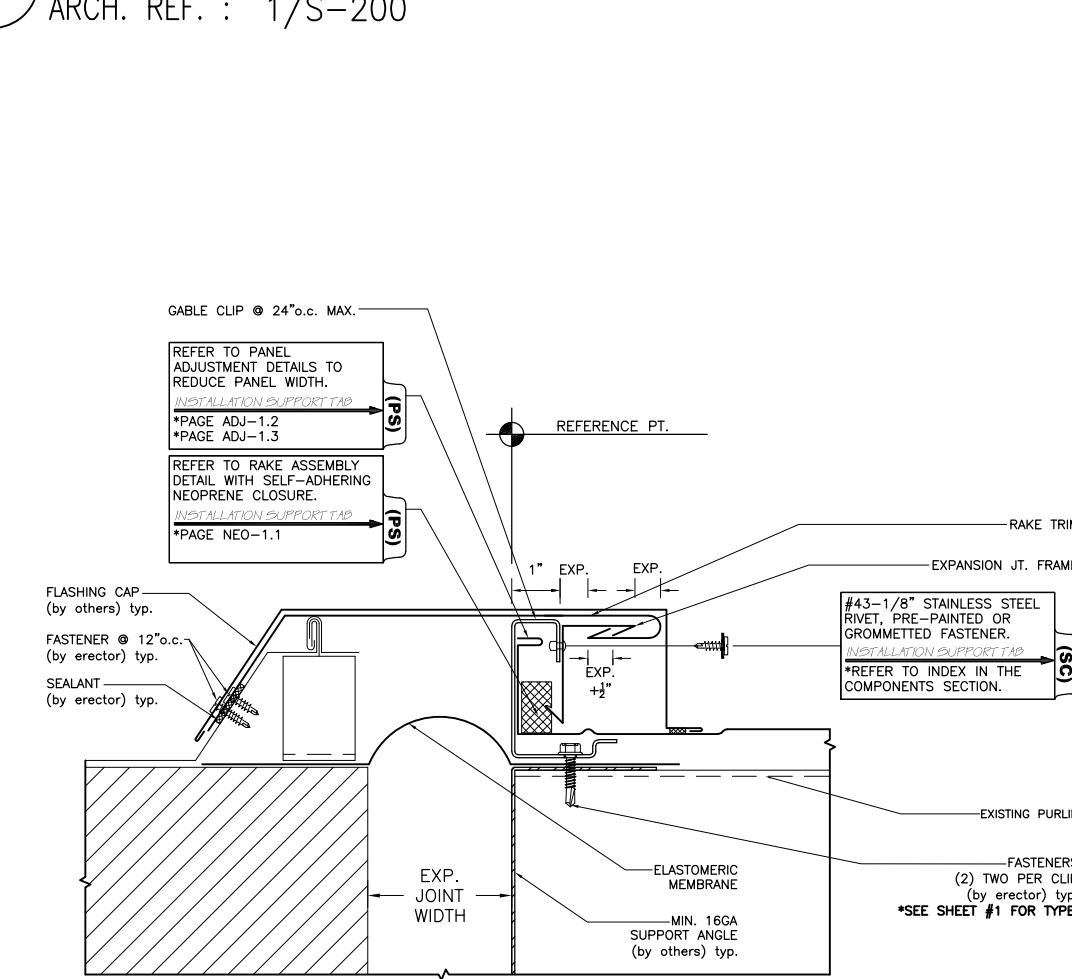
B FIXED SHED RIDGE DETAIL
6 ARCH. REF. : 1/S-200



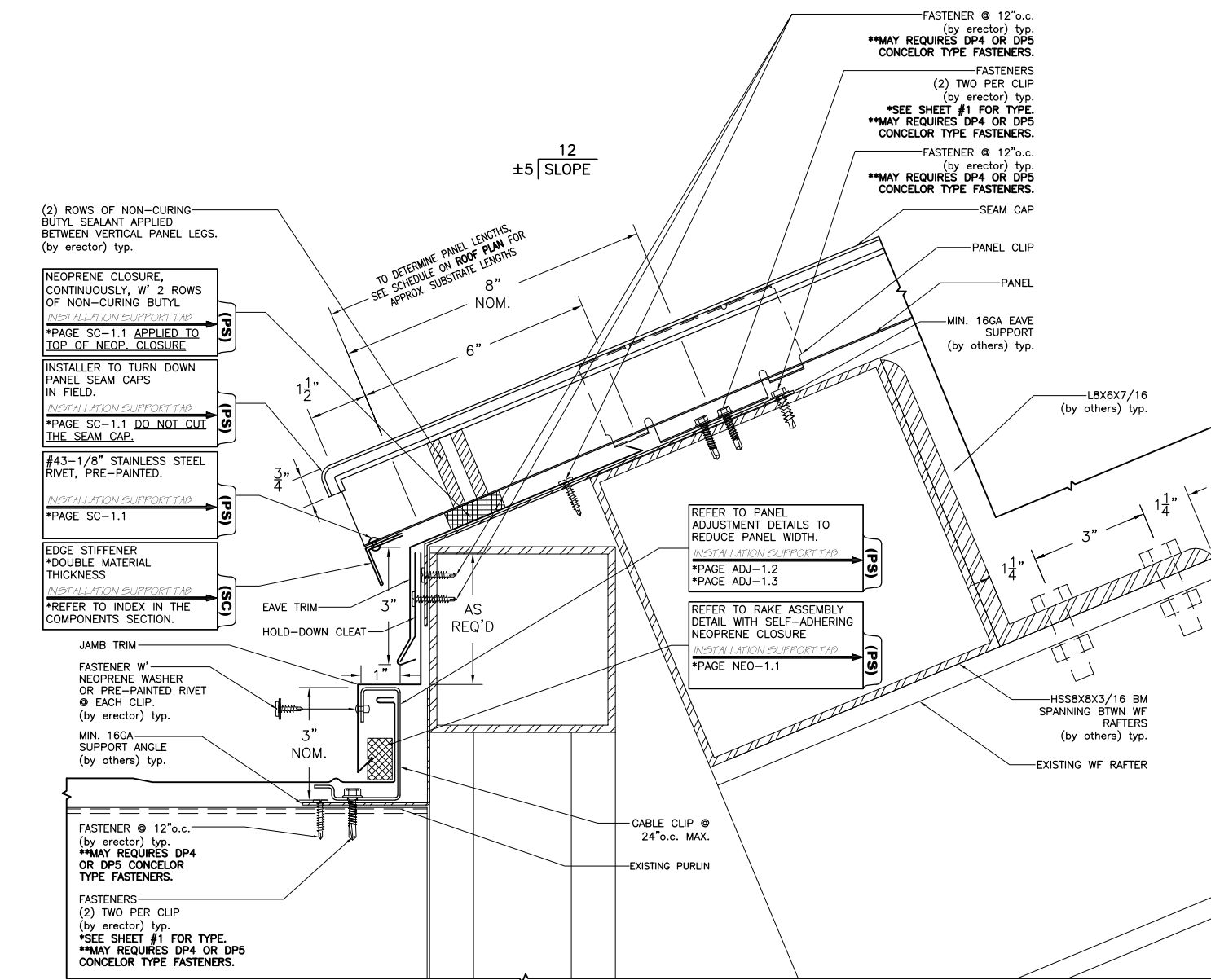
C RAKE DETAIL
6 ARCH. REF. : NA



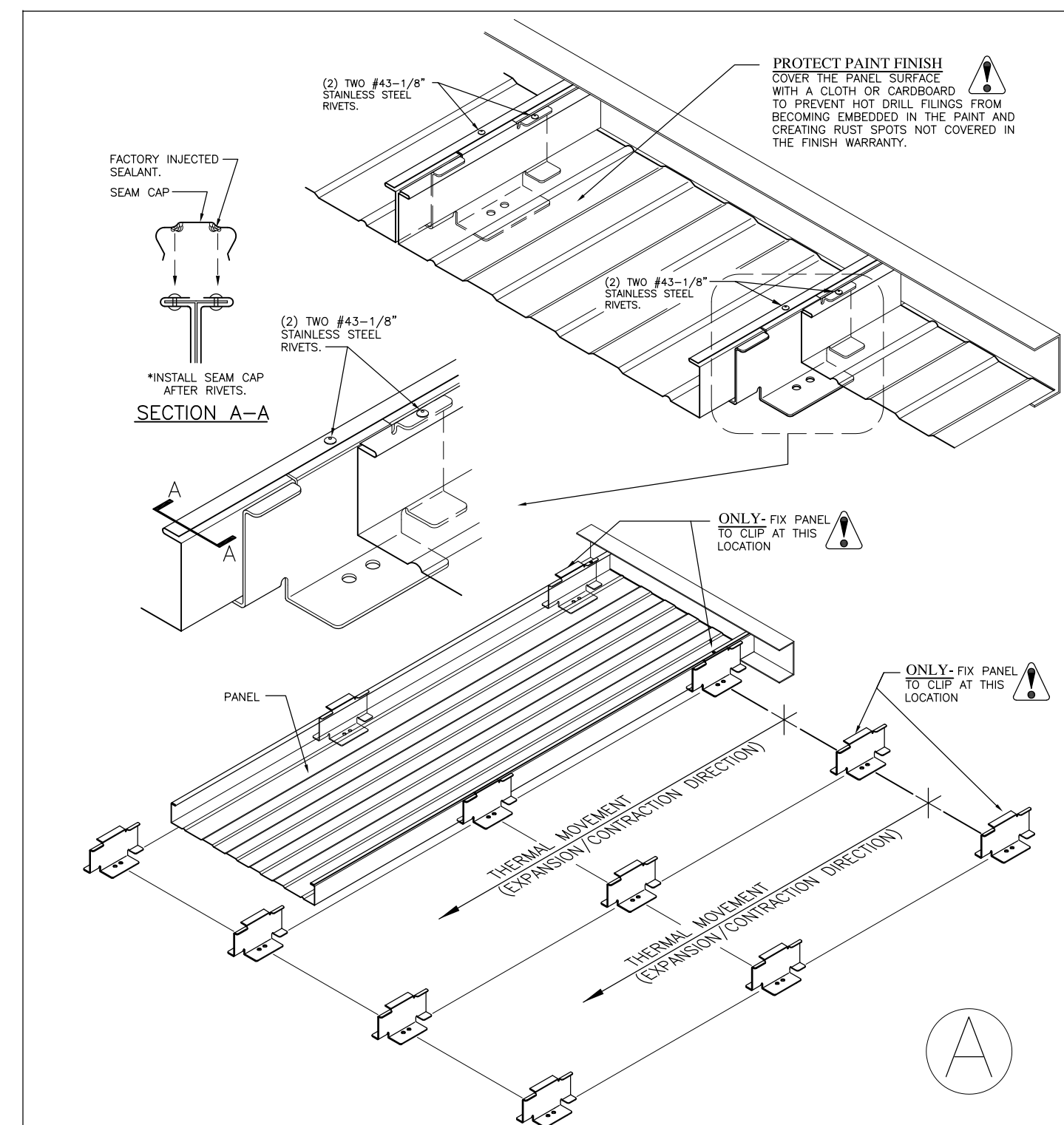
D SHED RIDGE TO RAKE TRANSITION DETAIL
6 ARCH. REF. : NA



E EXPANSION JOINT DETAIL
6 ARCH. REF. : NA



F EAVE TO SLOPING JAMB DETAIL
6 ARCH. REF. : NA



ERECTOR NOTE: FIXED PANEL INSTALLATION METHOD

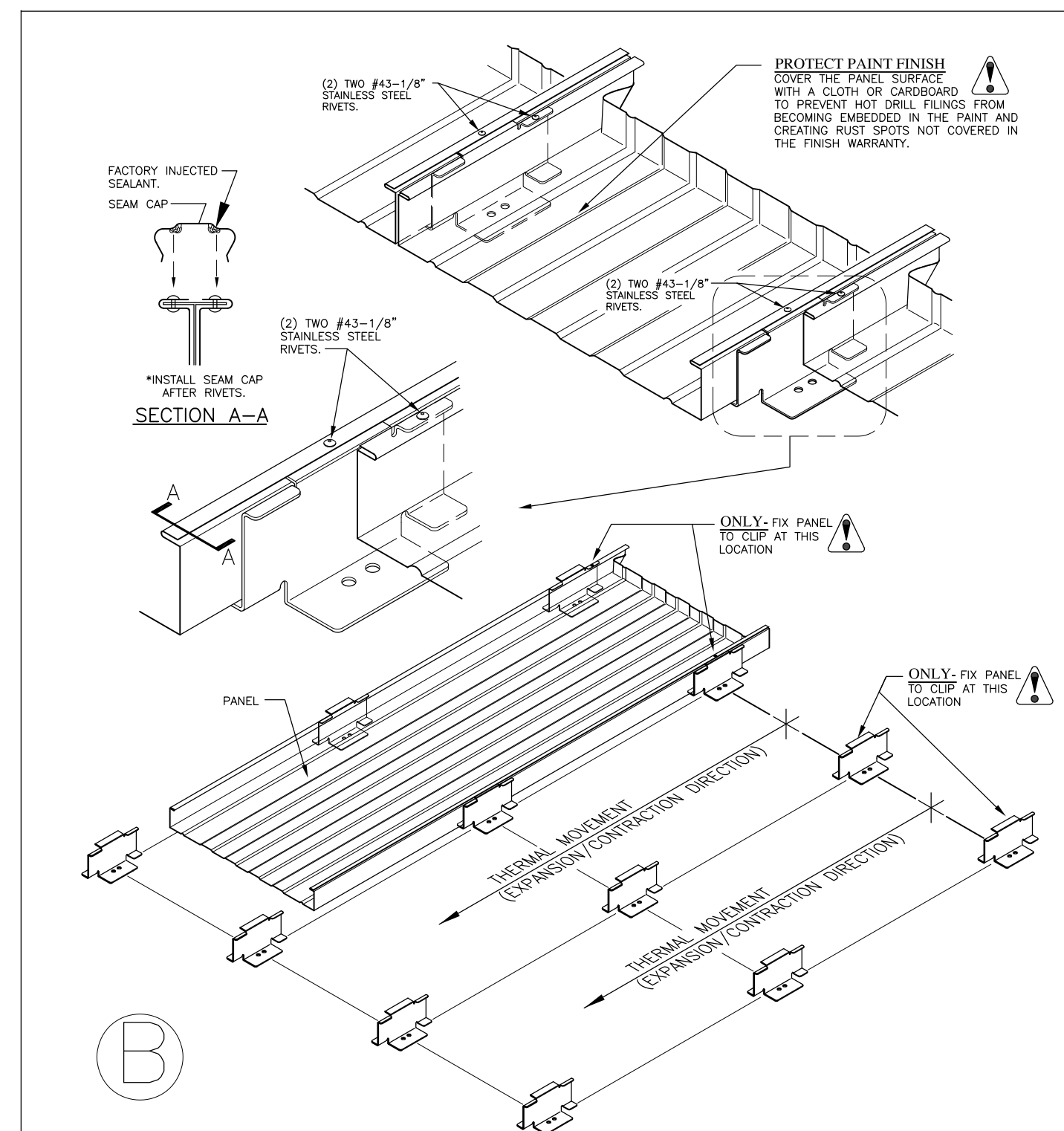
- TYPICALLY, PANELS ARE "FIXED" ALONG THE RIDGE/HEAD CONDITIONS AND PANEL THERMAL MOVEMENT IS DIRECTED TOWARD THE EAVE/SLOPINGLY CONSIDERED.
- FIX (MECHANICAL ATTACHED) PANELS TO CLIPS AS SHOWN.
- PROTECT THE PANEL'S PAINT FINISH FROM HOT DRILL FLUNGES. THESE FLUNGES WILL BECOME SELF-EMBEDDED IN THE PAINT AND CREATE RUST SPOTS NOT COVERED IN THE FINISH WARRANTY.
- SNAP ON THE SEAM CAP AFTER THE PANEL HAS BEEN RIVETED TO THE PANEL CLIPS. SEE DRAWING.
- USE THE HAND CRIMPING TOOL AND CRIMP THE SEAM CAPS AT THESE FIXED LOCATIONS.
- DO NOT RUN THE MOTORIZED ELECTRIC SEAMING MACHINE OVER THESE FIXED LOCATIONS.

ERECTOR NOTE: FIXED PANEL LOCATION EXPLANATION

- THE FIXED PANEL LOCATIONS ILLUSTRATED ON THE ROOF PLAN DESIGNATE A "FIXED LOCATION" BETWEEN THE PANEL AND PANEL CLIP.
- THIS "FIXED LOCATION" IS A MECHANICAL CONNECTION BETWEEN THESE TWO COMPONENTS, PANEL AND PANEL CLIP.
- A "FIXED LOCATION" CAN ONLY OCCUR AT ONE LOCATION ON EACH PANEL.
- DO NOT ATTACH EACH PANEL CLIP TO THE PANEL.
- ALL REMAINING PANEL CLIPS ALONG THE PANEL MUST NOT BE ATTACHED.
- ONCE THE PANEL IS FIXED AT THE ONE LOCATION, THE REMAINING NON-ATTACHED PANEL CLIPS WILL ALLOW PANEL THERMAL MOVEMENT.
- THIS THERMAL MOVEMENT IS EXPANSION AND CONTRACTION OF THE PANEL ALONG ITS' ENTIRE LENGTH.

2-Rivet Fixed Panel Detail

SEE ROOF PLAN FOR CORRECT PLACEMENT OF THE PANEL'S FIXED LOCATIONS.
IF THIS IS UNCLEAR IN ANY MANNER, DO NOT INSTALL PANELS AND CONTACT THE MANUFACTURER OR MANUFACTURER'S REPRESENTATIVE FOR CLARIFICATIONS.



ERECTOR NOTE: FIXED PANEL INSTALLATION METHOD

- TYPICALLY, PANELS ARE "FIXED" ALONG THE RIDGE/HEAD CONDITIONS AND PANEL THERMAL MOVEMENT IS DIRECTED TOWARD THE EAVE/SLOPINGLY CONSIDERED.
- FIX (MECHANICAL ATTACHED) PANELS TO CLIPS AS SHOWN.
- PROTECT THE PANEL'S PAINT FINISH FROM HOT DRILL FLUNGES. THESE FLUNGES WILL BECOME SELF-EMBEDDED IN THE PAINT AND CREATE RUST SPOTS NOT COVERED IN THE FINISH WARRANTY.
- SNAP ON THE SEAM CAP AFTER THE PANEL HAS BEEN RIVETED TO THE PANEL CLIPS. SEE DRAWING.
- USE THE HAND CRIMPING TOOL AND CRIMP THE SEAM CAPS AT THESE FIXED LOCATIONS.
- DO NOT RUN THE MOTORIZED ELECTRIC SEAMING MACHINE OVER THESE FIXED LOCATIONS.

ERECTOR NOTE: FIXED PANEL LOCATION EXPLANATION

- THE FIXED PANEL LOCATIONS ILLUSTRATED ON THE ROOF PLAN DESIGNATE A "FIXED LOCATION" BETWEEN THE PANEL AND PANEL CLIP.
- THIS "FIXED LOCATION" IS A MECHANICAL CONNECTION BETWEEN THESE TWO COMPONENTS, PANEL AND PANEL CLIP.
- A "FIXED LOCATION" CAN ONLY OCCUR AT ONE LOCATION ON EACH PANEL.
- DO NOT ATTACH EACH PANEL CLIP TO THE PANEL.
- ALL REMAINING PANEL CLIPS ALONG THE PANEL MUST NOT BE ATTACHED.
- ONCE THE PANEL IS FIXED AT THE ONE LOCATION, THE REMAINING NON-ATTACHED PANEL CLIPS WILL ALLOW PANEL THERMAL MOVEMENT.
- THIS THERMAL MOVEMENT IS EXPANSION AND CONTRACTION OF THE PANEL ALONG ITS' ENTIRE LENGTH.

2-Rivet Fixed Panel Detail

SEE ROOF PLAN FOR CORRECT PLACEMENT OF THE PANEL'S FIXED LOCATIONS.
IF THIS IS UNCLEAR IN ANY MANNER, DO NOT INSTALL PANELS AND CONTACT THE MANUFACTURER OR MANUFACTURER'S REPRESENTATIVE FOR CLARIFICATIONS.

FOR REVIEW

TRUCKEE TAHOE AIRPORT HANGAR REPAIRS
10356 TRUCKEE AIRPORT RD., TRUCKEE, CA 96161

ARCHITECT: NA
DATE: 10/23/23
DWG BY: MEC
CHK BY: MB

CUSTOMER: "TBD"
AGENT: TIM SAMANIEGO

THE GARLAND COMPANY INC.
3800 EAST 91ST STREET - CLEVELAND, OHIO 44105-2197
PHONE (800) 321-9336 / FAX (216) 641-0633

