

MEMO:

To: Board of Directors, ACAT and Staff
From: Hardy Bullock, Environment & Technology Specialist
Subject: Community Comments & Operations Report- 2nd Quarter 2012
Date: July 26, 2012

Overview

This report summarizes data from several airport systems designed to monitor operational activity. These systems include the wireless airport surveillance platform (WASP), the Multi Lateration Flight Tracking System (FT), and our internal commenter data base along with reported operations from Care Flight and Soar Truckee. All systems produced reliable data with nearly 100% uptime. Gliders have an operational impact on the airport in this 2nd quarter of 2012. Glider operational numbers are added to May and June for 2011 and 2012 in the piston single category and glider category using the following formula:

Previous Annual Reported Operations: 5496

May 2% (110)

June 24% (1319)

July 24% (1319)

August 24% (1319)

September 24% (1319)

October 2% (110)

I have removed "Unknown" from the operations type. A manual audit of the small segment of unidentified aircraft allows us to correctly categorize those operations.

The 4th Quarter 2012 report acts as the annual master and annual totals are updated to reflect actual glider operations as received from Soar Truckee. The only operations that are not reflected here are helicopters other than Care Flight.

Flight Tracking

Q2 2012 is the second quarter to ingrate our new Flight Tracking System data for use in this report. The exhibits furnished in this report are basic depictions of the flight events that generated a comment. Both the aircraft and household are anonymous for reporting purposes. The reporting location is marked by a red polygon icon. No effort was made on my part to place judgment on the validity of either the comment or the quality of the track flown with respect to noise abatement procedure compliance. I do however, feel that the depiction of flight events offered here accurately depict the aircraft that created annoyance for the given comment. That is to say that the track correlation for the given comment period is nearly 100%. An associated altitude at the point of closest approach is given for each track. This is the distance the aircraft was above the surface when it passed closest to the comment location.

Trends

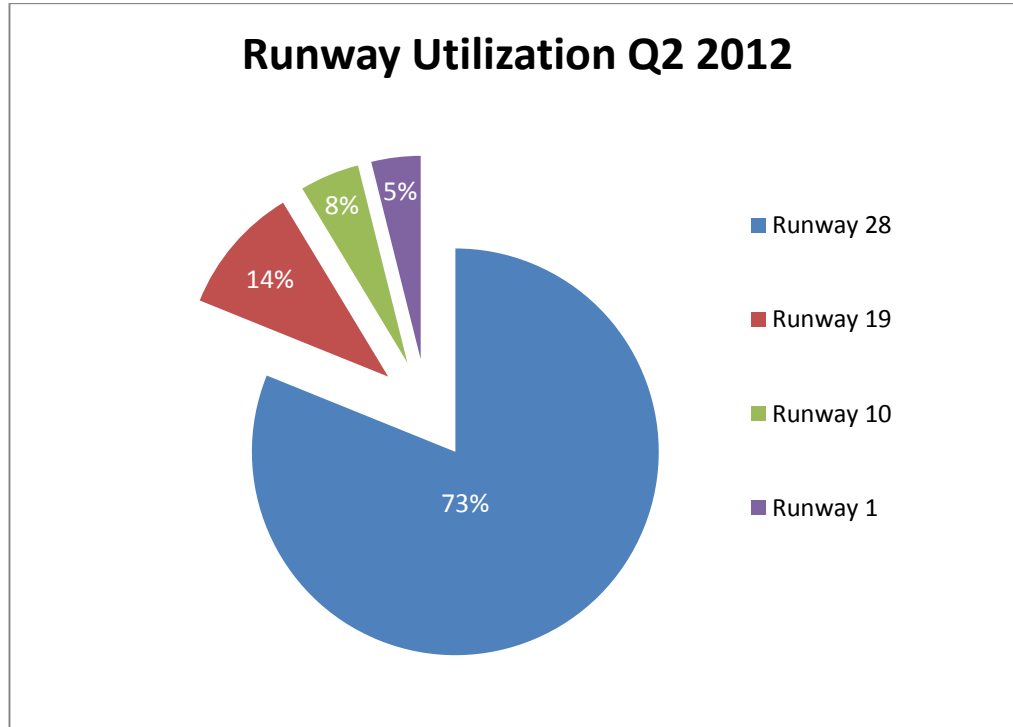
During Q2 2012 a 1% decrease in total operations from Q2 2011 was estimated. Q2 2012 saw a 44% increase in operations per comment from the same period in 2011. That is to say that we can generate 547 operations with one comment compared to 382 operations per comment in the same period in 2011. The overall reported annoyance of aircraft in Q2 2012 was 9 compared to 13 in Q2 of 2011. Piston comments were up and jet comments were down when compared to last year.

Curfew

Staff processed no cancellations of voluntary Fly Quiet Incentives due to out of hours operations. Three operations after 11 PM and before 6 AM were captured in Q2 of 2012. None of these aircraft are based here in Truckee.

Beyond the Comments

44% of all the comments in the Q2 were from one household located in the B1 zone. Medium and large jet operations increased in Q2 but only two comment referenced jet operations of the 9 received. Comments referenced all types of operations, arrivals, touch and go, departures, and over flights. Weather did not play a significant role in the selection of runways in Q2 based on an above average period of clear skies and fair weather. No significant runway closures occurred in Q2 2012. Below is a runway utilization graph for our four runways for Q2 2012.



Comments by Operation Q2 2012

- ✓ Arrivals generated more comments than departures in Q2 2012. While some comments referenced departures the flight tracking system determined those operations to be over flights.
- ✓ Touch and go operations generated only one comment in Q2 2012.

A Few Items of Note in Q2

- 9 comments were received from 6 households. One household in the B1 zone accounted for 44% of the comments.
- All comments referenced operations between the hours of 8:00 AM and 6:12 PM.
- Staff used flight tracking data to respond to comments made by our neighbors. Most commenters responded favorably to discussion that utilized specific operational data such as altitude, speed, direction of flight and relative position.

	Apr-11	Apr-12	% Change	May-11	May-12	% Change	Jun-11	Jun-12	% Change	2Q 2011	2Q 2012	% Change	LYTD	YTD	% Change
Comments- Location															
Alder	0	0	0%	0	0	0%	1	0	-100%	1	0	-100%	2	0	100%
Donner Lake	0	0	0%	0	0	0%	0	0	0%	0	0	0%	0	0	0%
Downtown	0	0	0%	0	0	0%	0	0	0%	0	0	0%	0	0	0%
Gateway	0	0	0%	0	0	0%	0	0	0%	0	0	0%	0	0	0%
Glenshire	0	0	0%	0	0	0%	1	2	100%	1	2	100%	2	2	0%
Martis Valley Estates	0	1	100%	2	1	-50%	2	2	0%	4	4	0%	10	12	20%
Northstar/ Martis	0	0	0%	1	0	-100%	0	1	100%	1	1	0%	1	1	0%
Olympic Heights	0	0	0%	0	1	100%	0	1	100%	0	2	100%	2	2	0%
Ponderosa	0	0	0%	0	0	0%	1	0	-100%	1	0	-100%	1	0	-100%
Prosser	0	0	0%	1	0	-100%	0	0	0%	1	0	-100%	4	1	-75%
Tahoe Donner	1	0	-100%	2	0	-100%	1	0	-100%	4	0	-100%	4	0	-100%
Unknown/Other	0	0	0%	0	0	0%	0	0	0%	0	0	0%	0	0	0%
TOTAL	1	1	0%	6	2	-67%	6	6	0%	13	9	-31%	26	18	-31%
Operations- Type															
Piston Single	620	498	-20%	749	773	3%	1356	1310	-3%	2725	2581	-5%	4915	3413	-31%
Piston Twin	92	88	-4%	94	62	-34%	96	76	-21%	282	226	-20%	569	359	-37%
Turbo Prop	160	172	8%	168	208	24%	224	294	31%	552	674	22%	1146	1088	-5%
Jet <12,499 lbs	42	30	-29%	26	22	-15%	50	54	8%	118	106	-10%	246	206	-16%
Jet 12,499-19,999 lbs	40	16	-60%	32	30	-6%	58	86	48%	130	132	2%	262	216	-18%
Jet > 20,000 lbs	42	16	-62%	28	30	7%	42	86	105%	112	132	18%	179	232	30%
Helo	89	160	80%	118	110	-7%	124	90	-27%	331	360	9%	715	578	-19%
Glider	0	0	0%	55	55	0%	660	660	0%	715	715	0%	0	715	100%
TOTAL	1085	980	-10%	1270	1290	2%	2610	2656	2%	4965	4926	-1%	8032	7956	-1%
Comments- Type															
Piston	0	1	-100%	2	2	0%	2	4	100%	4	7	75%	11	7	-36%
Turbine	0	0	0%	1	0	-100%	1	1	100%	2	1	-50%	2	1	-50%
Jet	0	0	0%	3	0	-100%	2	1	-100%	5	1	-80%	9	9	0%
Helo	0	0	0%	0	0	0%	0	0	0%	0	0	-100%	1	0	-100%
Unknown	1	0	-100%	0	0	0%	1	0	-100%	2	0	-100%	3	1	-67%
TOTAL	1	1	0%	6	2	-67%	6	6	0%	13	9	-31%	26	18	-31%
Ops/Comment	1085	980	-10%	212	645	205%	435	443	2%	382	547	43%	309	442	43%
Q2 2012 Operations by Home Base vs. Transient				HomeBased 36% Transient 64%											

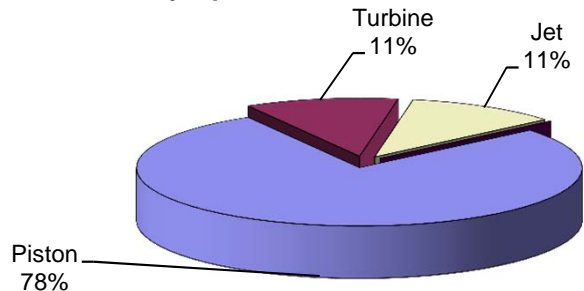
	Q2 2011	Q2 2012	% Change	2011	2012	% Change
Total Operations	4964	4925	-1%	8032	7956	-1%
Total Comments	13	9	-31%	26	18	-31%
Operations/Com	382	547	43%	309	442	43%

Operations & Community Comment Report

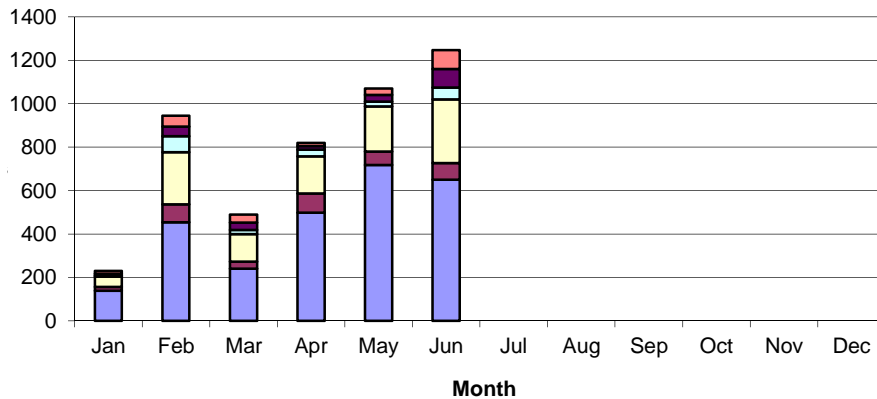
Second Quarter 2012

Truckee Tahoe Airport District

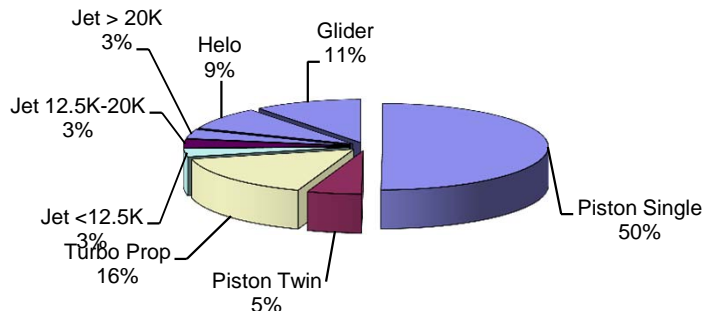
Comments by Operation



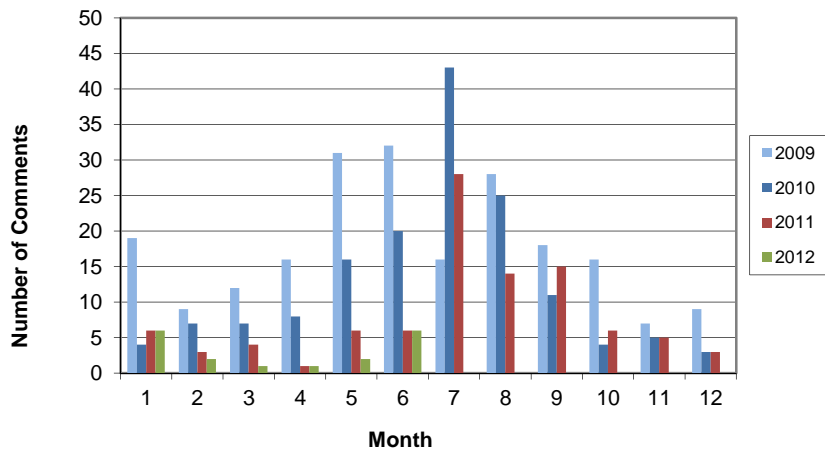
Operations by Type of Aircraft



YTD Operations by Aircraft Type



Comments 2009 to 2012



YTD Comments by Location

