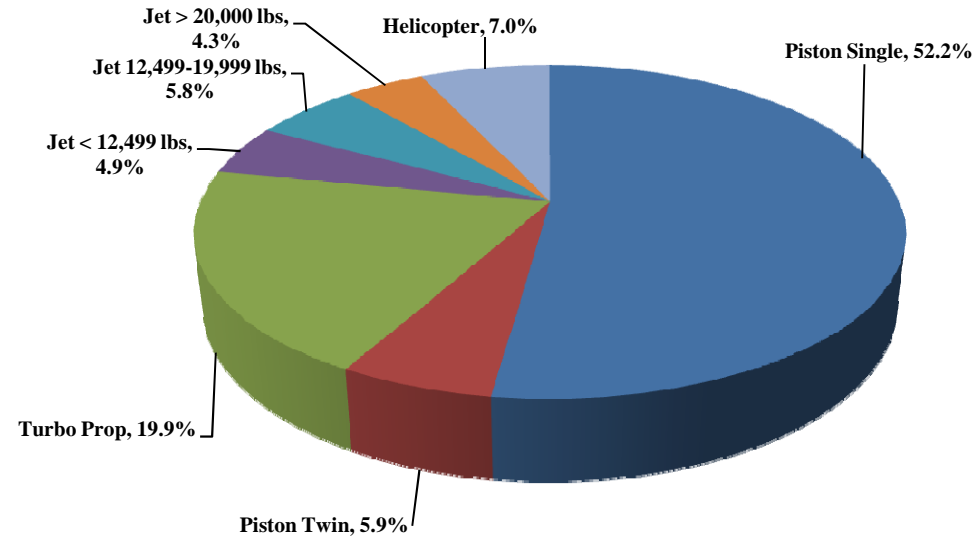




TRUCKEE TAHOE AIRPORT DISTRICT Operations and Community Comment Report as of 12/31/2014

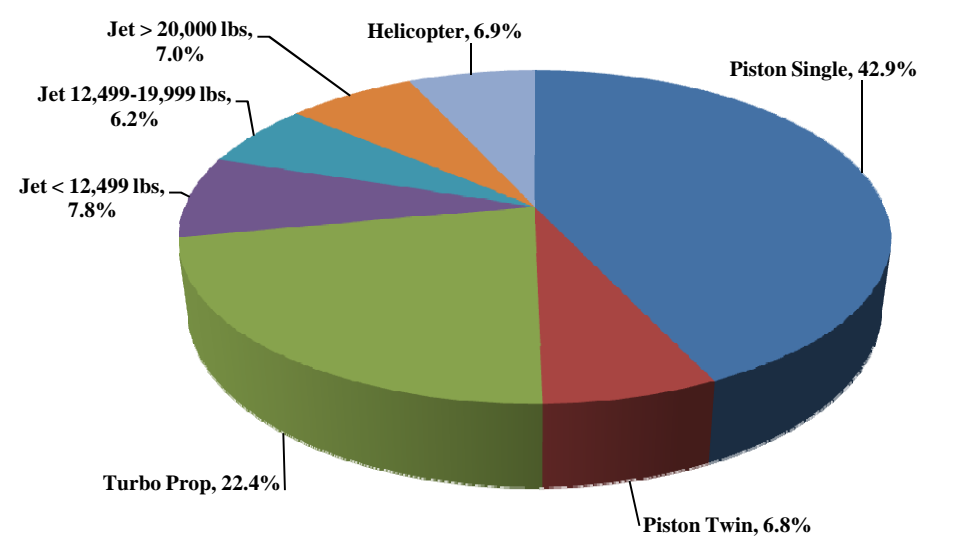


Current Quarter | Operations
October 1, 2014 - December 31, 2014



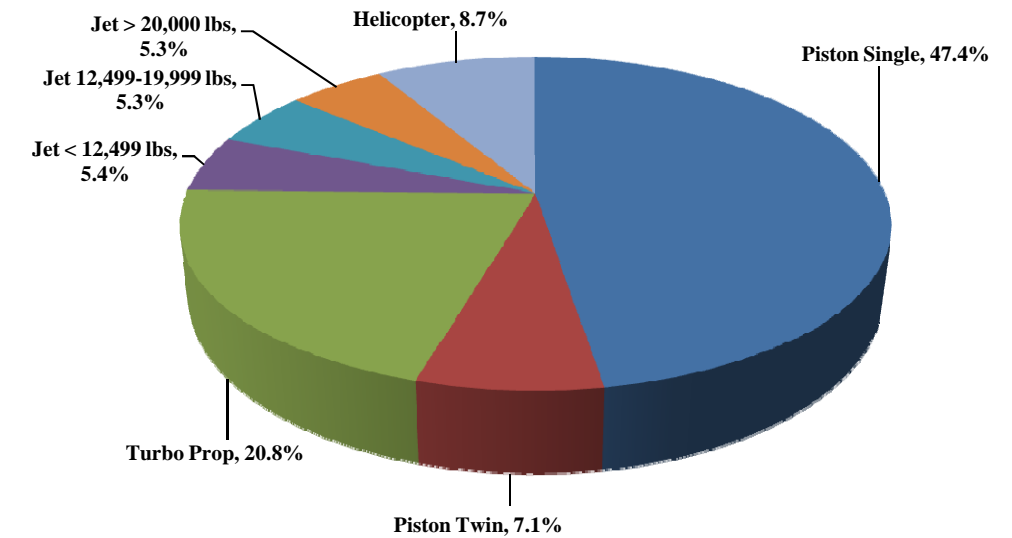
Total Powered Aircraft (before Modification) **3,918**

Year-to-Date | Operations
January 1, 2014 - December 31, 2014



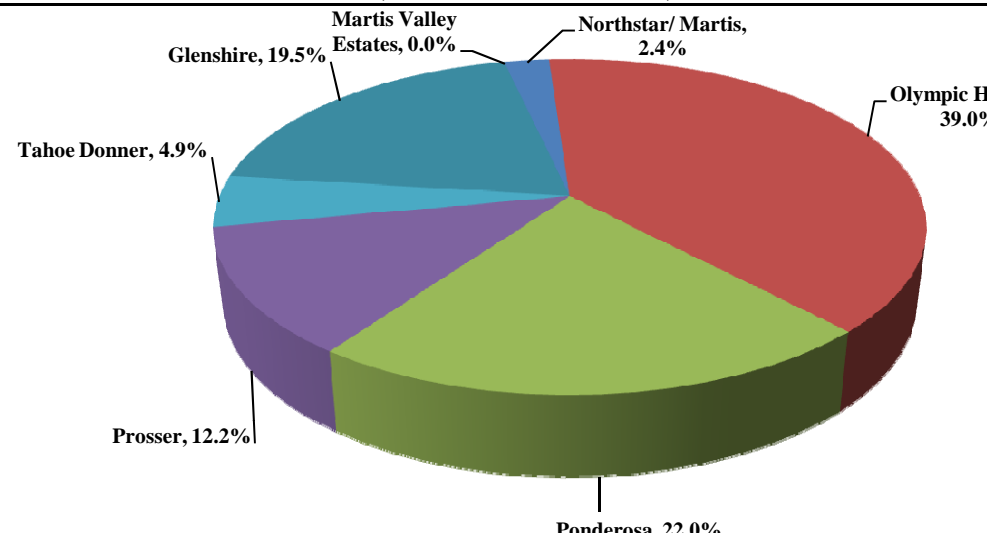
Total Powered Aircraft (before Modification) **16,441**

Historic | Operations
January 1, 2011 - December 31, 2014



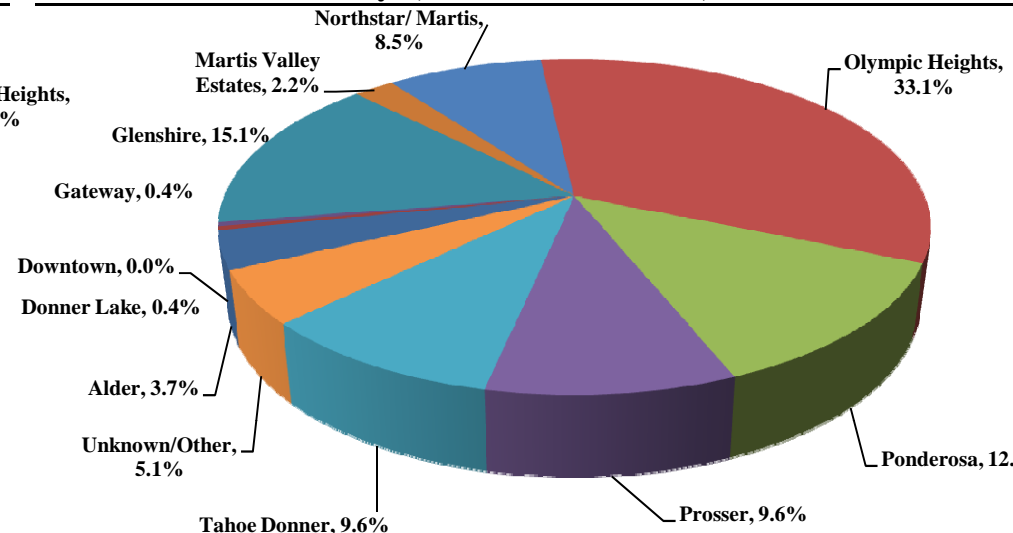
Total Powered Aircraft (before Modification) **59,934**

Current Quarter | Comments
October 1, 2014 - December 31, 2014



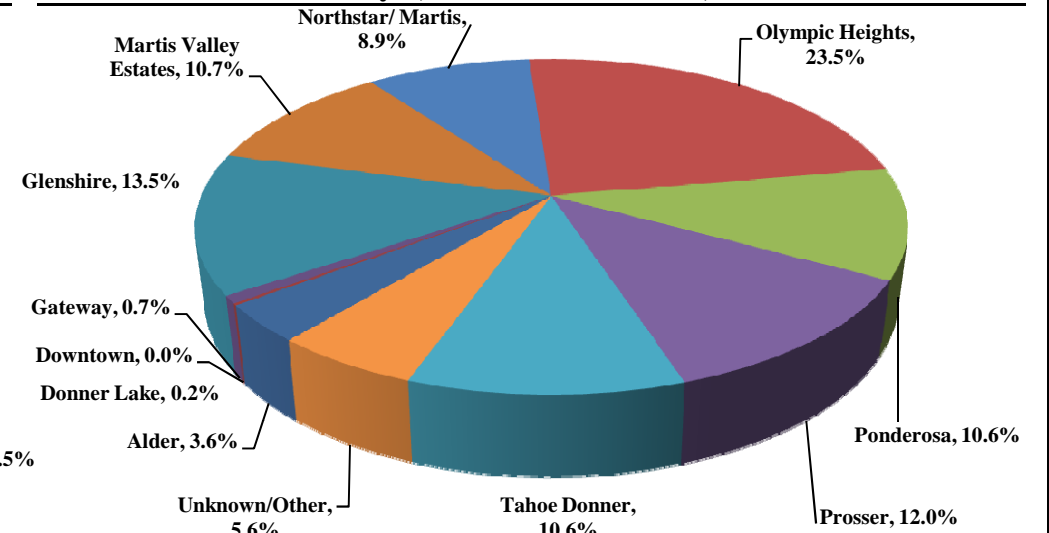
Total Comments **41**
Modified Operations / Comment **107**

Year-to-Date | Comments
January 1, 2014 - December 31, 2014



Total Comments **272**
Modified Operations / Comment **84**

Historic | Comments
January 1, 2011 - December 31, 2014



Total Comments **549**
Modified Operations / Comment **158**

Notes

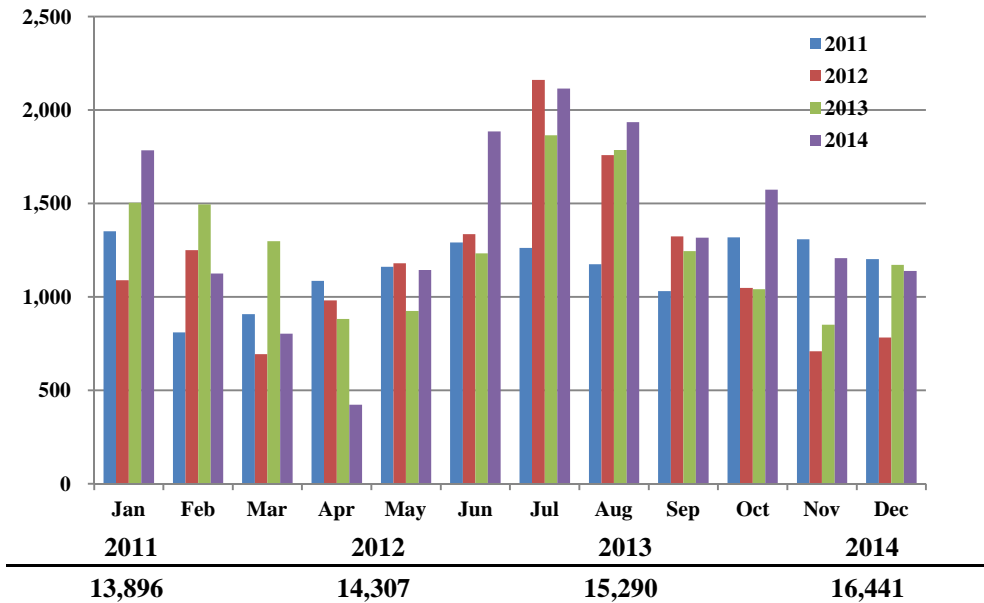
April 2014 - Launched new TTAD Website with 'Report Noise' link.
Operations graphs above use Total Powered Aircraft (before Modification). Glider operations and modification multipliers for Touch and Go operations and transient helicopters are not included.



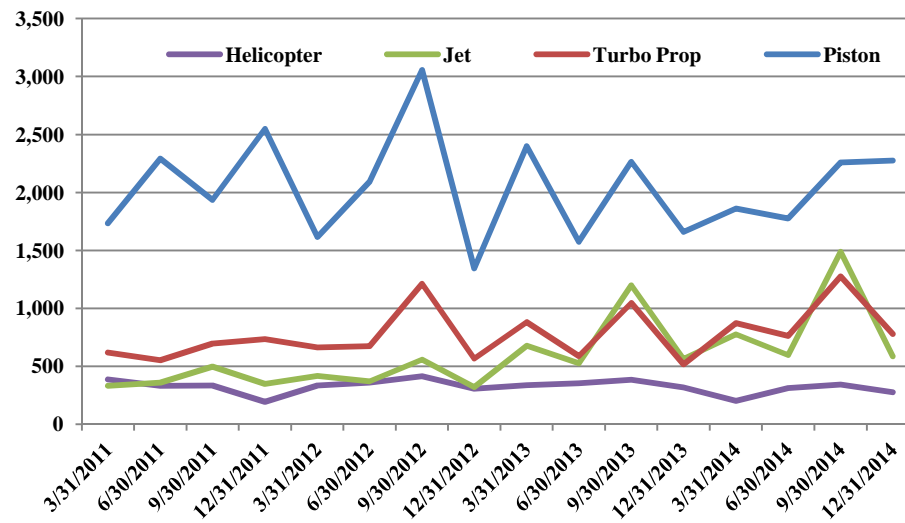
TRUCKEE TAHOE AIRPORT DISTRICT Operations and Community Comment Report as of 12/31/2014



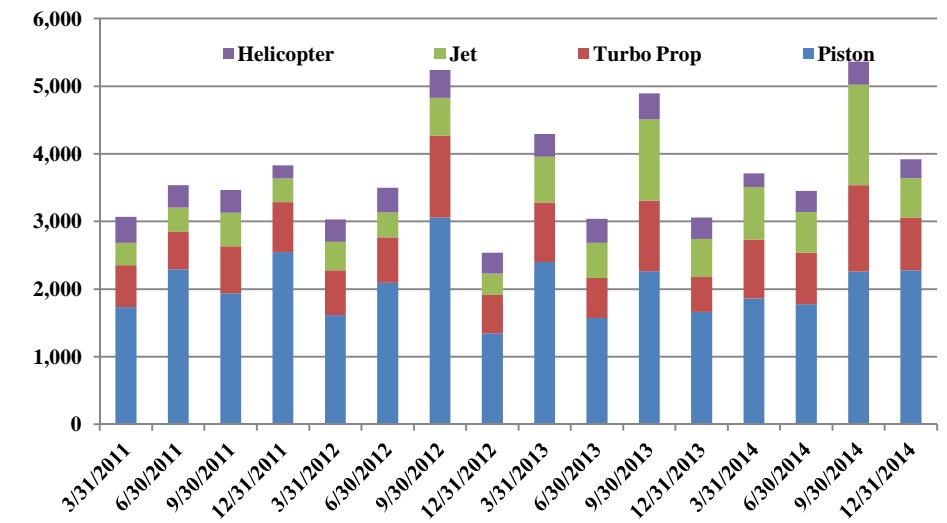
Operations | by Month by Year
January 1, 2011 - December 31, 2014



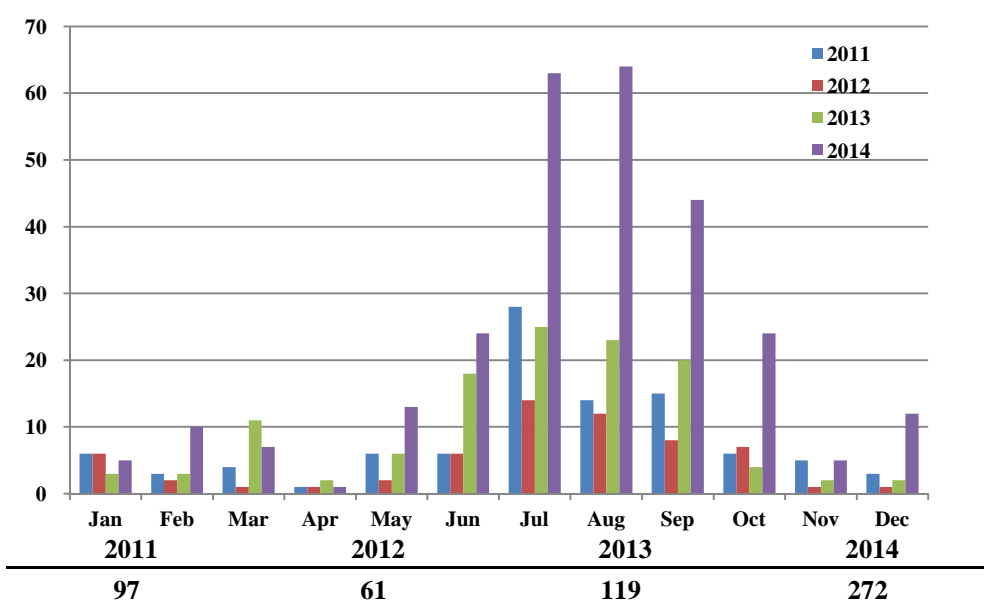
Operations | by Type by Quarter
January 1, 2011 - December 31, 2014



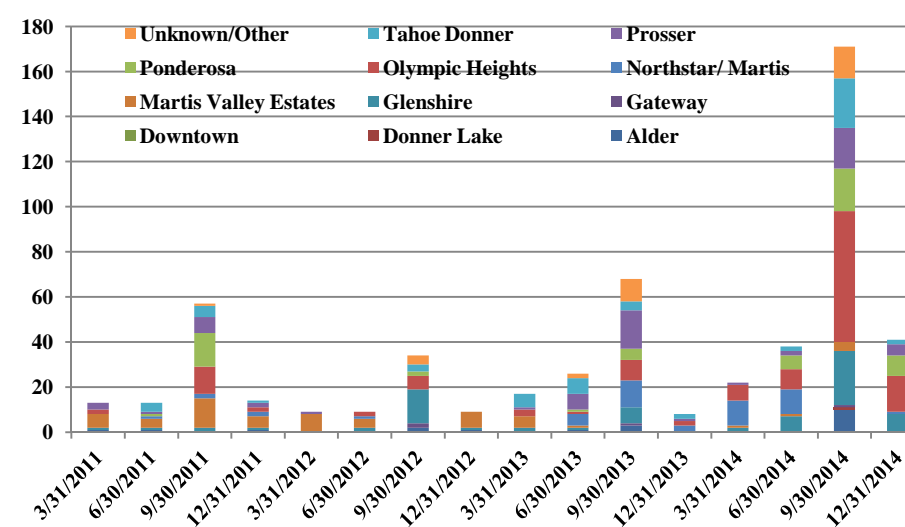
Operations | Mix by Type by Quarter
January 1, 2011 - December 31, 2014



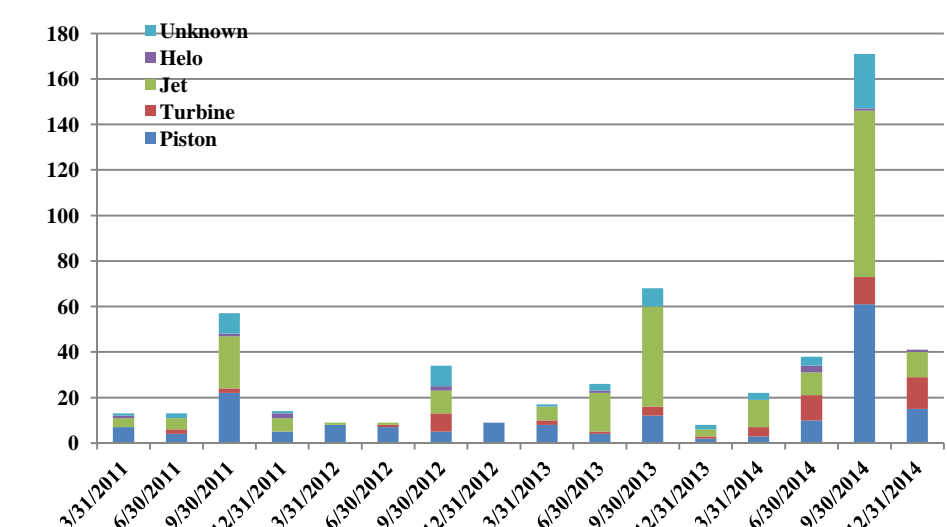
Comments | by Month by Year
January 1, 2011 - December 31, 2014



Comments | by Locale by Quarter
January 1, 2011 - December 31, 2014



Comments | by Type by Quarter
January 1, 2011 - December 31, 2014



Notes

April 2014 - Launched new TTAD Website with 'Report Noise' link.
Operations graphs above use Total Powered Aircraft (before Modification). Glider operations and modification multipliers for Touch and Go operations and transient helicopters are not included.



Truckee Tahoe Airport District Operations and Community Comment Report as of 12/31/2014



	OPERATIONS										Year to Date				Notes
	2013				2014				difference	%	2013	2014	difference	%	
	Oct	Nov	Dec	Q4	Oct	Nov	Dec	Q4							
Operations Detail															
Piston Single	514	404	520	1,438	888	684	472	2,044	606	42.14%	6,854	7,060	206	3.01%	
Piston Twin	92	74	56	222	113	73	46	232	10	4.50%	1,042	1,110	68	6.53%	
Turbo Prop	168	120	230	518	262	222	296	780	262	50.58%	3,036	3,691	655	21.57%	
Jet < 12,499 lbs	70	50	98	218	74	48	70	192	(26)	(11.93%)	1,046	1,276	230	21.99%	
Jet 12,499-19,999 lbs	74	56	88	218	82	42	102	226	8	3.67%	946	1,027	81	8.56%	
Jet > 20,000 lbs	20	38	70	128	58	36	74	168	40	31.25%	974	1,145	171	17.56%	
Helicopter	102	108	108	318	96	102	78	276	(42)	(13.21%)	1,392	1,132	(260)	(18.68%)	
Total Powered Aircraft (before Modification)	1,040	850	1,170	3,060	1,573	1,207	1,138	3,918	858	28.04%	15,290	16,441	1,151	7.53%	
Gliders	109	-	-	109	109	-	-	109	-	0.00%	4,889	4,889	-	0.00%	
Total Operations (before Modification)	1,149	850	1,170	3,169	1,682	1,207	1,138	4,027	858	27.07%	20,179	21,330	1,151	5.70%	
Modified Operations															
Total Powered Aircraft (above)				3,060				3,918	858	28.04%	15,290	16,441	1,151	7.53%	
Piston Single				1,438				2,044	606	42.14%	6,854	7,060	206	3.01%	
Helicopter				318				276	(42)	(13.21%)	1,392	1,132	(260)	(18.68%)	
subtotal				1,756				2,320	564	32.12%	8,246	8,192	(54)	(0.65%)	
Modifier				15%				15%			17%	18%			
Modification				263				348	85	32.32%	1,439	1,434	(5)	(0.35%)	
Total Powered Aircraft (after Modification)				3,323				4,266	943	28.38%	16,729	17,875	1,146	6.85%	
Gliders				109				109	-	0.00%	4,889	4,889	-	0.00%	
Total Operations (after Modification)				3,432				4,375	943	27.48%	21,618	22,764	1,146	5.30%	

	COMMENTS										Year to Date				Notes
	2013				2014				difference	%	2013	2014	difference	%	
	Oct	Nov	Dec	Q4	Oct	Nov	Dec	Q4							
Comment Location															
Alder	-	-	-	-	-	-	-	-	-	0.00%	4	10	6	150.00%	
Donner Lake	-	-	-	-	-	-	-	-	-	0.00%	-	1	1	100.00%	
Downtown	-	-	-	-	-	-	-	-	-	0.00%	-	-	-	0.00%	
Gateway	-	-	-	-	-	-	-	-	-	0.00%	1	1	-	0.00%	
Glenshire	-	-	-	-	2	-	6	8	8	100.00%	10	41	31	310.00%	
Martis Valley Estates	-	-	-	-	-	-	-	-	-	0.00%	6	6	-	0.00%	
Northstar/ Martis	2	1	-	3	-	-	1	1	(2)	(66.67%)	20	23	3	15.00%	
Olympic Heights	2	-	-	2	9	5	2	16	14	700.00%	15	90	75	500.00%	
Ponderosa	-	-	-	-	9	-	-	9	9	100.00%	6	34	28	466.67%	
Prosser	-	-	1	1	4	-	1	5	4	400.00%	26	26	-	0.00%	
Tahoe Donner	-	1	1	2	-	-	2	2	-	0.00%	19	26	7	36.84%	
Unknown/Other	-	-	-	-	-	-	-	-	-	0.00%	12	14	2	16.67%	
Total Comments	4	2	2	8	24	5	12	41	33	412.50%	119	272	153	128.57%	
Comment Type															
Piston	2	-	-	2	12	1	2	15	13	650.00%	26	89	63	242.31%	
Turbine	1	-	-	1	5	3	6	14	13	1300.00%	8	41	33	412.50%	
Jet	1	1	1	3	6	1	4	11	8	266.67%	70	106	36	51.43%	
Helo	-	-	-	-	1	-	-	1	1	100.00%	1	5	4	400.00%	
Unknown	-	1	1	2	-	-	-	-	(2)	(100.00%)	14	31	17	121.43%	
Total Comments	4	2	2	8	24	5	12	41	33	412.50%	119	272	153	128.57%	
	-	-	-	-	-	-	-	-	-	0.00%	-	-	-	-	
Operations per Comment				429				107	(322)	(75.13%)	182	84	(98)	(53.93%)	

**Truckee Tahoe Airport District
Annual Operations Summary
2011-2014**

	Operations						Operations Mix					
	2011	2012	2013	2014	Total	Avg. Change	2011	2012	2013	2014	Total	Change
Operations Detail												
Piston Single	7,329	7,178	6,854	7,060	28,421	-1.24%	35.08%	33.61%	31.71%	31.01%	32.81%	-4.06%
Piston Twin	1,182	931	1,042	1,110	4,265	-2.07%	5.66%	4.36%	4.82%	4.88%	4.92%	-0.78%
Total Piston	8,511	8,109	7,896	8,170	32,686	-1.35%	40.73%	37.97%	36.53%	35.89%	37.73%	-4.84%
Turbo Prop	2,602	3,116	3,036	3,691	12,445	12.36%	12.45%	14.59%	14.04%	16.21%	14.36%	3.76%
Jet < 12,499 lbs	500	441	1,046	1,276	3,263	36.66%	2.39%	2.06%	4.84%	5.61%	3.77%	3.21%
Jet 12,499-19,999 lbs	590	642	946	1,027	3,205	20.29%	2.82%	3.01%	4.38%	4.51%	3.70%	1.69%
Jet > 20,000 lbs	447	583	974	1,145	3,149	36.83%	2.14%	2.73%	4.51%	5.03%	3.63%	2.89%
Total Jet	1,537	1,666	2,966	3,448	9,617	30.91%	7.36%	7.80%	13.72%	15.15%	11.10%	7.79%
Helicopter	1,246	1,416	1,392	1,132	5,186	-3.15%	5.96%	6.63%	6.44%	4.97%	5.99%	-0.99%
Total Powered Aircraft (before Modification)	13,896	14,307	15,290	16,441	59,934	5.77%	66.51%	66.98%	70.73%	72.22%	69.18%	5.72%
Gliders	5,496	5,496	4,889	4,889	20,770	-3.83%	26.30%	25.73%	22.62%	21.48%	23.97%	-4.83%
Total Operations (before Modification)	19,392	19,803	20,179	21,330	80,704	3.23%	92.81%	92.72%	93.34%	93.70%	93.15%	0.89%
Modified Operations												
Total Powered Aircraft (above)	13,896	14,307	15,290	16,441	59,934							
Piston Single	7,329	7,178	6,854	7,060	28,421							
Helicopter	1,246	1,416	1,392	1,132	5,186							
subtotal	8,575	8,594	8,246	8,192	33,607							
Modifier	17.5%	18.1%	17.5%	17.5%	17.6%							
Modification	1,502	1,556	1,439	1,434	5,931							
Total Powered Aircraft (after Modification)	15,398	15,863	16,729	17,875	65,865	5.10%	73.70%	74.27%	77.38%	78.52%	76.03%	4.83%
Gliders	5,496	5,496	4,889	4,889	20,770	-3.83%	26.30%	25.73%	22.62%	21.48%	23.97%	-4.83%
Total Operations (after Modification)	20,894	21,359	21,618	22,764	86,635	2.90%	100.00%	100.00%	100.00%	100.00%	100.00%	0.00%