



MEETING DATE: February 25, 2015
TO: Board of Directors
FROM: Kevin Smith, General Manager
SUBJECT: Funding Partnership for Air Maze at Kid Zone

RECOMMENDATION: Staff recommends participation in partnership to purchase the Air Maze exhibit for the Kid Zone. Approve \$5,350 to match donations from the Teichert Foundation and our local Experimental Aircraft Association Chapter 1073.

DISCUSSION: For the past 2 years the Kid Zone has partnered with the District on an Aviation themed education exhibit. The Exhibit has been very successful and has provided positive public awareness of the District, benefit, and value to many constituents and their families. Our contract term with the Kid Zone expires this summer and a new exhibit is planned for this fall. Staff has had a great working relationship with the Kid Zone through the exhibit contract period.

The Kid Zone is inquiring if the District would participate on a permanent exhibit called the Air Maze. This exhibit teaches children about air and allows them to experiment with air flow, moving objects with air, and air pressure. It is a pertinent topic related to aviation and would allow the District to have a permanent display and recognition at a very prominent local attraction that is available to everyone in our community. Please read the attached information from the Kid Zone to learn more about their request.

Both Teichert Foundation and the EAA Chapter have already donated funding to the exhibit. They are seeking the last piece of funding to finish the exhibit. They are requesting \$5,350.

FISCAL IMPACT:

Staff proposes to fund this from Community Outreach funds included in the FY2015 Budget.

PUBLIC COMMUNICATIONS:

As part of their request the District will receive ample and prominent recognition permanently in the Kid Zone as part of this program.

ATTACHMENTS:

Letter and pictures from the Kid Zone



January 12, 2015

Dear Kevin,

The KidZone Museum has an exciting opportunity for the Truckee Tahoe Airport to join Teichert Foundation and Experimental Aircraft Association 1073 in a joint project with KidZone Museum that will bring the concept of airflow and engineering to the young children of our community.

KidZone Museum would like to install a permanent exhibit that compliments our Take Flight installation and will expand the display of Take Flight for an additional 6 months of our 2-year plan. This highly interactive exhibit is an introduction to the science of air for children. Airmaze is a 10 x 10 clear, pneumatic tube system mounted to a wall. There are diverter boxes that children can open and close. They do this to change the pathway of the balls, scarves and other objects that move through the tubes using the power of air.

Playing with air in this way allows children to make air "concrete". Even though air is invisible, Airmaze gives children ways to experiment with air in many of the same ways that children experiment with water.

Parents can play with their children and enhance science concept learning about air and answer questions and read books we provide that probe into the simplicity of airflow and flight such as: What is air? Where does wind come from? How does air move things? Does air take up space? Does air=wind? What objects move in the air/wind? How do objects move in air /wind? (How can I use air to move objects?) Why do some things stay up in the air? Can I move air? Is air powerful? Is air predictable? (Can I make the same thing happen again?) Why is air important to me? Can I figure out how air works?

The visitors who play with Airmaze will be able to feel the air, experiment with air, and try new things with air as the air moves different objects through the tubes. When listening to families play with Airmaze, we will hear their theories about what they are seeing and doing. They will test these theories by changing the ways in which they play with Airmaze. This exhibit creates opportunities for children to come up with questions about air and then experiment to find ways to answer those questions.

This exhibit is mounted to a wall, is highly transportable, and takes up a small amount of floor space. It will provide a huge area of learning through play, that will introduce children to the engineering of air and flight. The exhibit is directly inline with our

Board Officers

Stephanie Bright, President
Karin Abraham, Secretary
Jen Parker, Treasurer

Board Directors

Andy Chan
Spencer Cruttenden
Cathy Mooney
Jay O'Hanlon
Carrie Ridgel
Amy Schutz
Andy Chan

Benefactors Board

Bright Ditchoff Family
Castellar Family
Chintu Gudiya Foundation
EAA Chapter 1073
Johnsen Family
Kelly Brother's Painting
Law Offices of Porter Simon -
Steve Gross
Olander Family Foundation
Placer County First Five
Shaffer/Meagher Family
S.H. Cowell Foundation
Truckee Tahoe Airport Dist.
Teichert Foundation
Tahoe Truckee
Community Foundation

Sierra Nevada Children's
Museum (dba KidZone Museum)
is a 501(c)(3)
non-profit children's museum.

Tax ID 94-3156964

KidZone Museum
11711 Donner Pass Rd
Truckee, CA 96161
530.320.5613
www.kidzonemuseum.org

mission to inspire learning through creative play and discovery. And it is super fun allowing children to be engaged for hours.

The permanent exhibit will have the funders names mounted on the wall. The current funders are Teichert Foundation and Experimental Aircraft Association of Truckee. With the Truckee Tahoe Airport is an additional sponsor, we can complete the exhibit this spring.

We are excited to have this new addition since our admissions are up by 1,000 visits totaling 23,000 visits by children and families last year. Many of our visitors arrive by our free KidsReach bus or our social service partners serving children in poverty. This program is also growing and additional partners are now using our free transportation to go to the museum- which include the following Kings Beach organizations: Early Head Start, State Preschool and Boys & Girls club. These groups join the existing groups that frequent the museum such as Tahoe Safe Alliance, Sierra Teen Education and Parenting Program, Truckee Early Head Start and TTUSD schools.

Airmaze Budget	Airport	Matching Grants	Totals
Materials & Components	3000	4000	7000
Installation	2000	2000	4000
Books	200	0	200
Signage & Marketing	150	150	300
Total	5,350	6,150	11,500

We look forward to having Truckee Tahoe Airport continue to be a Benefactor of the KidZone Museum today and for the generations to come. I look forward to chatting with you about this possible partnership.

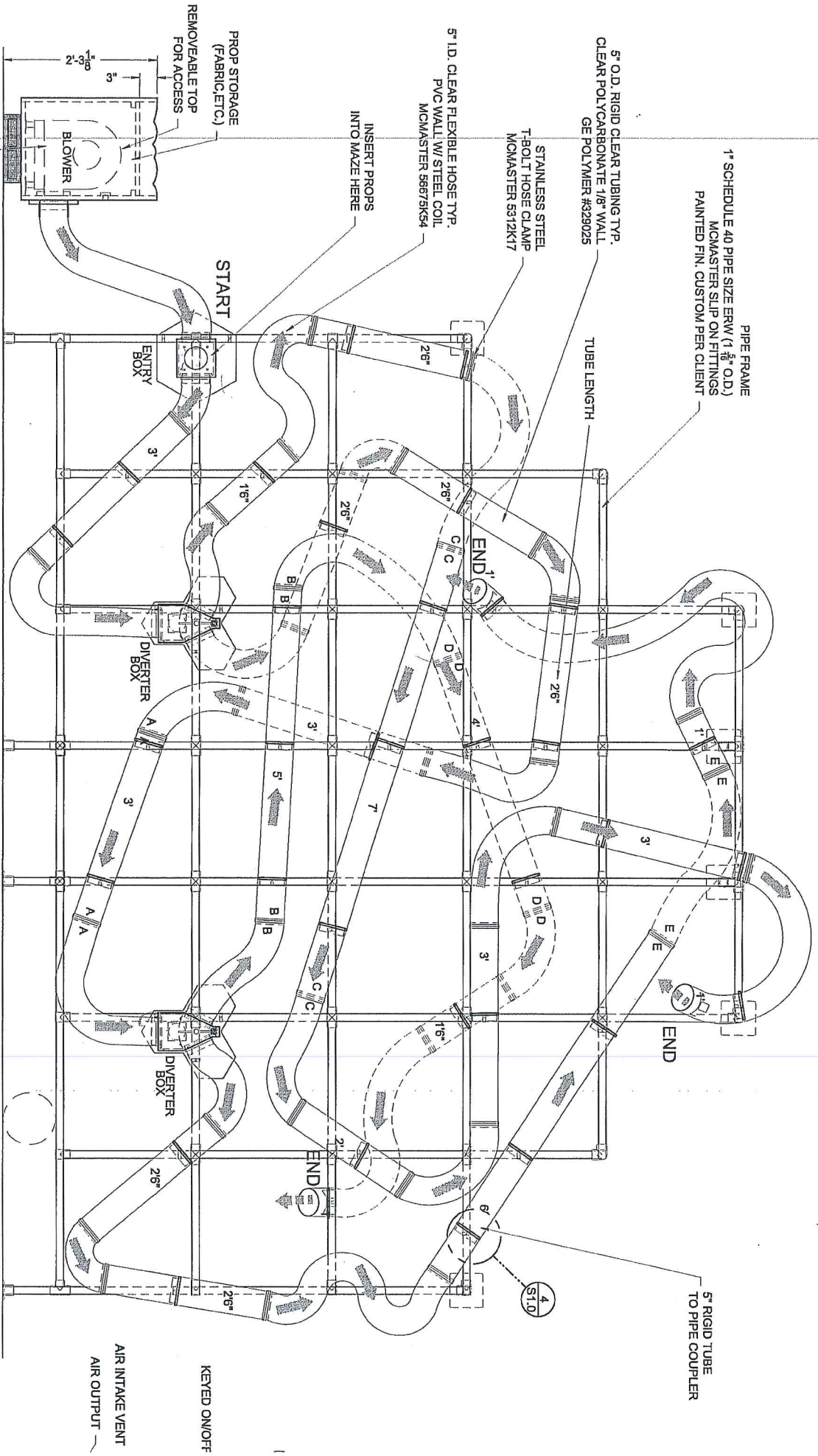
Best,



Carol Meagher
Executive Director

1 AIRMAZE - PLAN
S1.0 SCALE: 1" = 1'-0"

- NOTES:**
- PIPES A, B, C, D, & E REMOVABLE FOR SHIPPING.
 - FINISH ON FRAME IS SILVER (SAME AS PHOENIX).
 - MEDIUM BLOWER BOX IS USED.



INFRONT OF PIPE FRAME

5" RIGID TUBE TO PIPE COUPLER

4 S1.0

BLOWER HOUSING
KEYED ON/OFF
PTD. 3/4" BAL TIC BIRCH

PROP STORAGE
(FABRIC, ETC.)
REMOVEABLE TOP
FOR ACCESS

5" I.D. CLEAR FLEXIBLE HOSE TYP.
PVC WALL W/ STEEL COIL.
MCMMASTER 56675K54

5" O.D. RIGID CLEAR TUBING TYP.
CLEAR POLYCARBONATE 1/8" WALL
GE POLYMER #329025

STAINLESS STEEL
T-BOLT HOSE CLAMP
MCMMASTER 5312K17

PIPE FRAME
1" SCHEDULE 40 PIPE SIZE ERW (1 1/8" O.D.)
MCMMASTER SLIP ON FITTINGS
PAINTED FIN. CUSTOM PER CLIENT

TUBE LENGTH

INSERT PROPS
INTO MAZE HERE

START

ENTRY BOX

DIVERTER BOX

DIVERTER BOX

KEYED ON/OFF

AIR INTAKE VENT

AIR OUTPUT

1 AIRMAZE - FRONT
S1.0 SCALE: 1" = 1'-0"

1 S1.0

