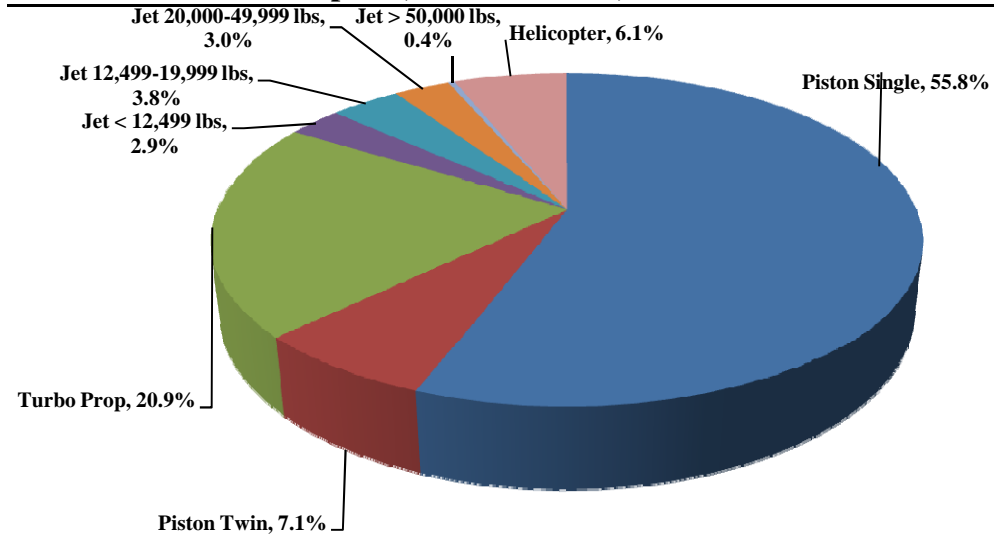




TRUCKEE TAHOE AIRPORT DISTRICT Operations and Community Comment Report as of 6/30/15

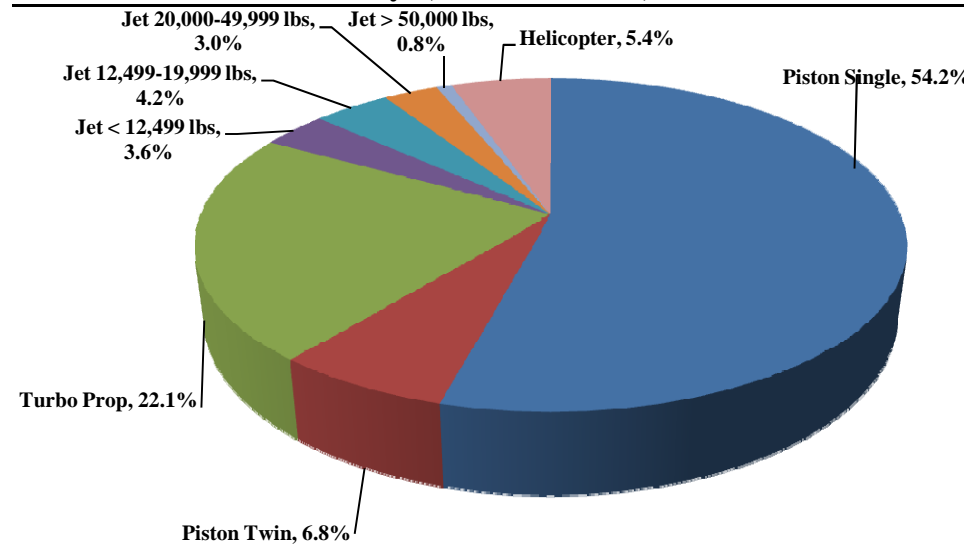


Current Quarter | Operations
April 1, 2015 - June 30, 2015



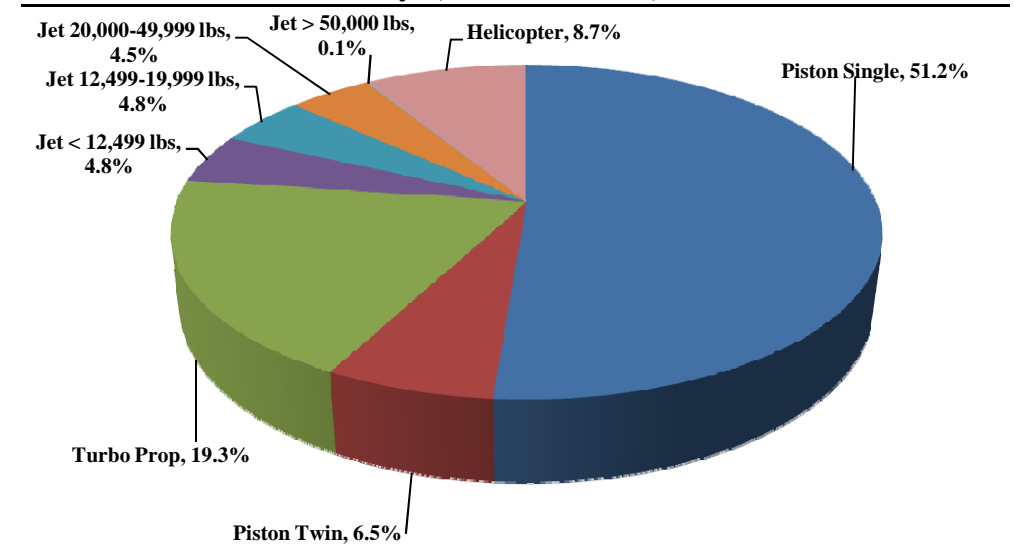
Total Powered Aircraft 5,509

Year-to-Date | Operations
January 1, 2015 - June 30, 2015



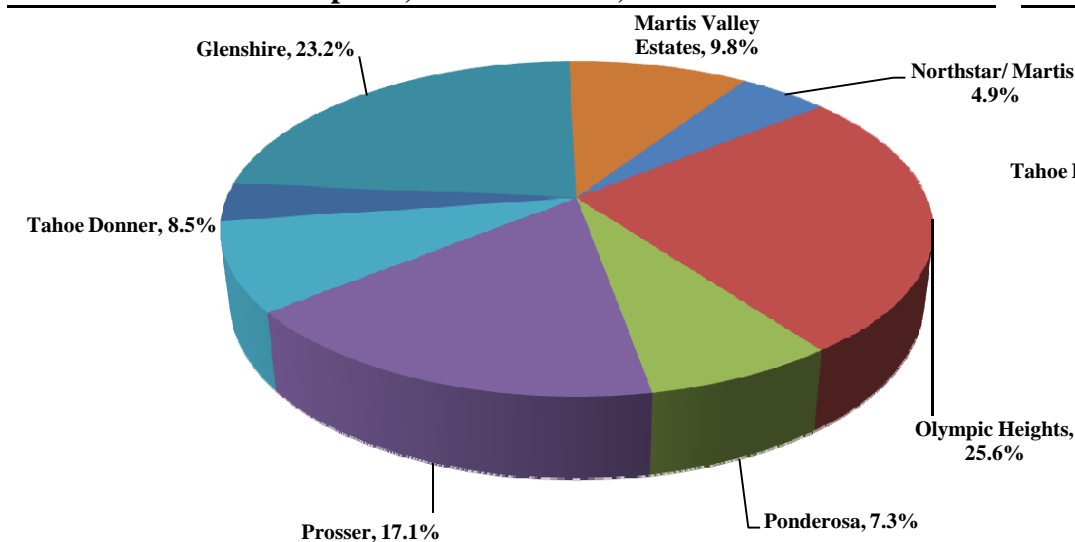
Total Powered Aircraft 10,520

Historic | Operations
January 1, 2011 - June 30, 2015



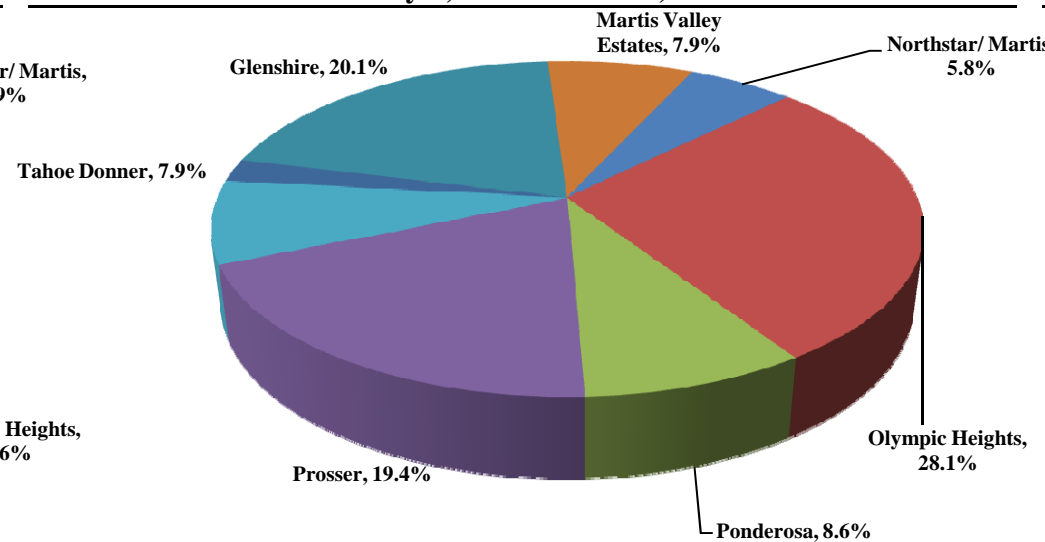
Total Powered Aircraft 76,385

Current Quarter | Comments
April 1, 2015 - June 30, 2015



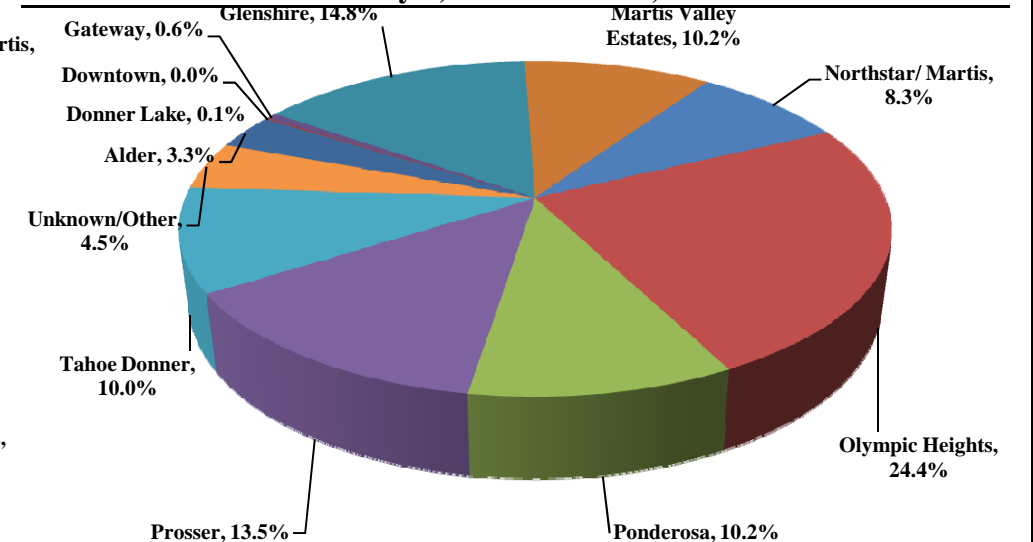
Total Comments 82
Operations / Comment 79

Year-to-Date | Comments
January 1, 2015 - June 30, 2015



Total Comments 139
Operations / Comment 83

Historic | Comments
January 1, 2011 - June 30, 2015



Total Comments 688
Operations / Comment 143

Notes

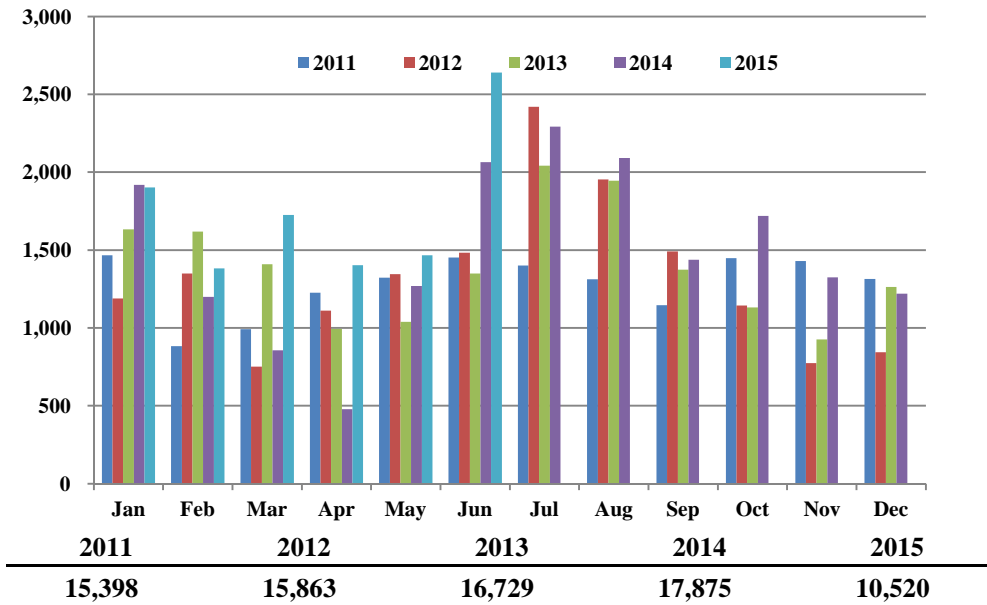
April 2014 - Launched new TTAD Website with 'Report Noise' link.
Operations graphs above use Total Powered Aircraft. Glider operations are not included.
Jets > 50,000lbs subcategory was added in Q1 2015. Reporting and analysis prior to 2015 is not included.



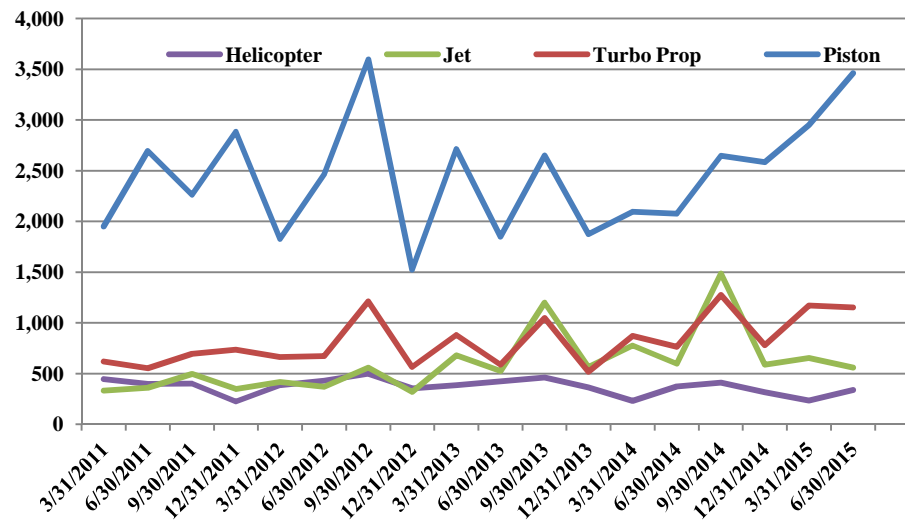
TRUCKEE TAHOE AIRPORT DISTRICT Operations and Community Comment Report as of 6/30/15



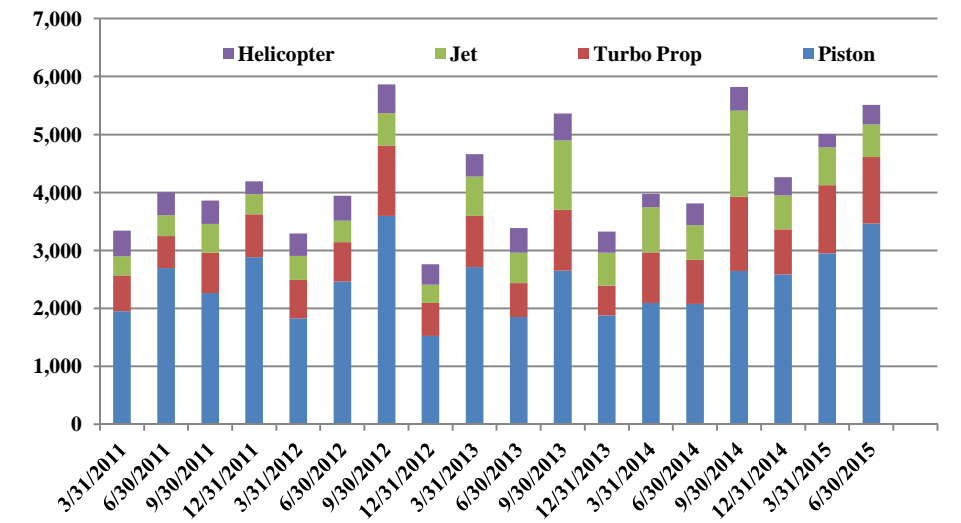
Operations | by Month by Year
January 1, 2011 - June 30, 2015



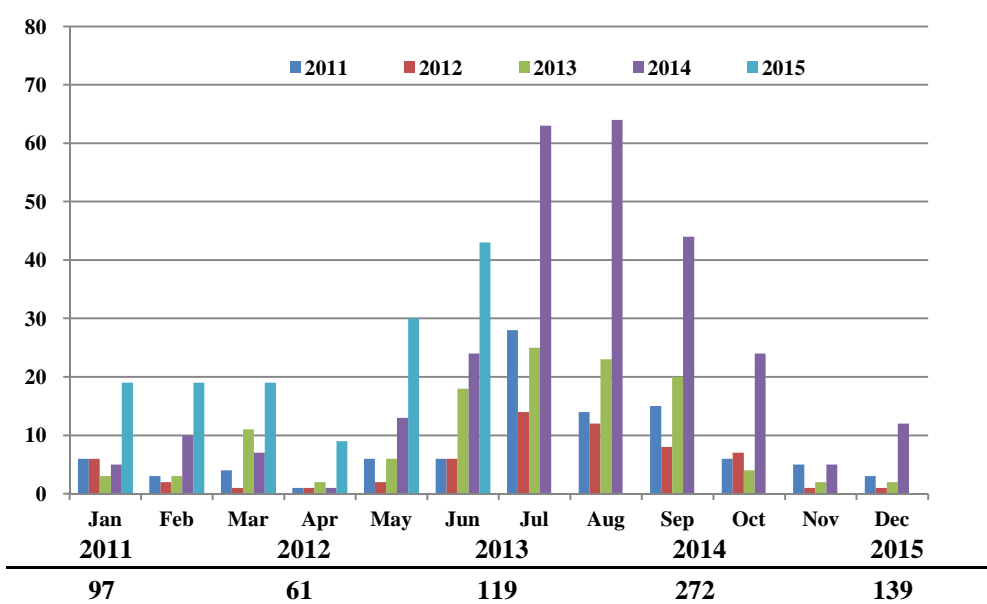
Operations | by Type by Quarter
January 1, 2011 - June 30, 2015



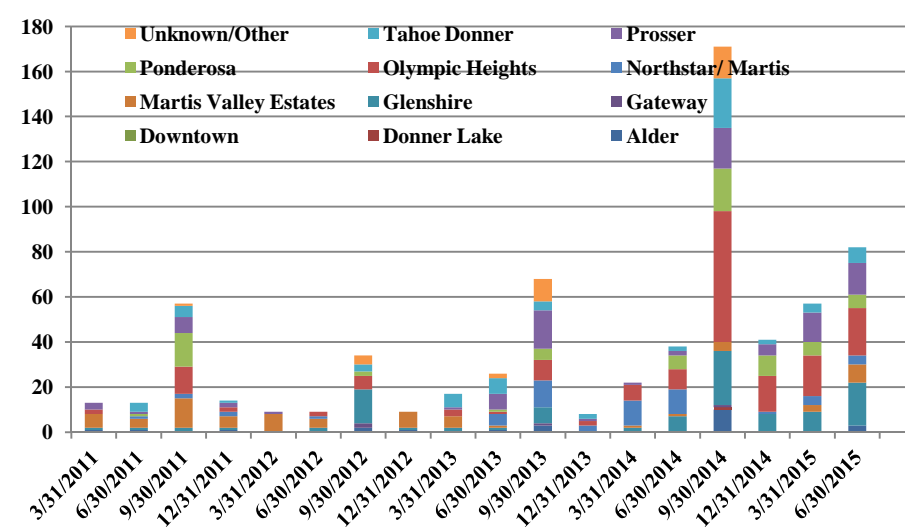
Operations | Mix by Type by Quarter
January 1, 2011 - June 30, 2015



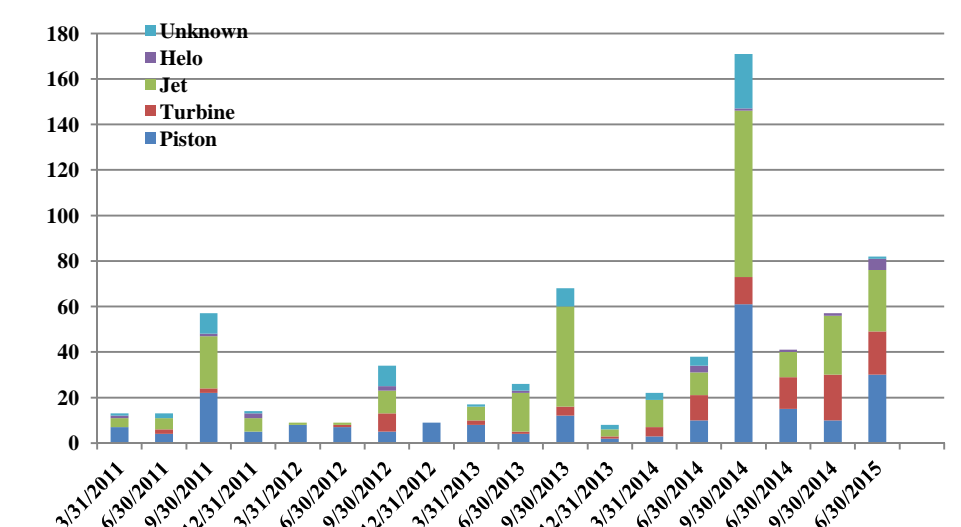
Comments | by Month by Year
January 1, 2011 - June 30, 2015



Comments | by Locale by Quarter
January 1, 2011 - June 30, 2015



Comments | by Type by Quarter
January 1, 2011 - June 30, 2015



Notes

April 2014 - Launched new TTAD Website with 'Report Noise' link.
 Operations graphs above use Total Powered Aircraft. Glider operations are not included.
 Jets > 50,000lbs subcategory was added in Q1 2015. Reporting and analysis prior to 2015 is not included.



Truckee Tahoe Airport District Operations and Community Comment Report as of 6/30/15



	OPERATIONS										Year over Year				Notes
	2014				2015				difference	%	7/1/13-6/30/14	7/1/14-6/30/15	difference	%	
	Apr	May	Jun	Q1	Apr	May	Jun	Q1							
Operations Detail															
Piston Single	215	647	938	1,800	794	811	1,467	3,072	1,272	70.67%	7,585	10,387	2,802	36.94%	
Piston Twin	24	65	187	276	119	71	200	390	114	41.30%	1,114	1,258	144	12.93%	
Turbo Prop	55	266	442	763	283	350	519	1,152	389	50.98%	3,201	4,379	1,178	36.80%	
Jet < 12,499 lbs	19	96	137	252	34	41	86	161	(91)	(36.11%)	1,230	1,036	(194)	(15.77%)	
Jet 12,499-19,999 lbs	26	31	126	183	42	59	109	210	27	14.75%	961	1,089	128	13.32%	
Jet 20,000-49,999 lbs	19	55	89	163	19	50	98	167	4	2.45%	947	1,073	126	13.31%	
Jet > 50,000 lbs	-	-	-	-	-	6	14	20	20	100.00%	-	87	87	100.00%	
Helicopter	120	109	145	374	112	79	146	337	(37)	(9.89%)	1,433	1,299	(134)	(9.35%)	
Total Powered Aircraft	478	1,269	2,064	3,811	1,403	1,467	2,639	5,509	1,698	44.56%	16,471	20,608	4,137	25.12%	
Gliders	-	165	658	823	-	148	852	1,000	177	21.51%	4,889	5,066	177	3.62%	
Total Operations	478	1,434	2,722	4,634	1,403	1,615	3,491	6,509	1,875	40.46%	21,360	25,674	4,314	20.20%	

	COMMENTS										Year over Year				Notes
	2014				2015				difference	%	7/1/13-6/30/14	7/1/14-6/30/15	difference	%	
	Apr	May	Jun	Q1	Apr	May	Jun	Q1							
Comment Location															
Alder	-	-	-	-	-	-	3	3	3	100.00%	3	13	10	333.33%	
Donner Lake	-	-	-	-	-	-	-	-	-	0.00%	-	1	1	100.00%	
Downtown	-	-	-	-	-	-	-	-	-	0.00%	-	-	-	0.00%	
Gateway	-	-	-	-	-	-	-	-	-	0.00%	1	1	-	0.00%	
Glenshire	-	4	3	7	3	8	8	19	12	171.43%	16	60	44	275.00%	
Martis Valley Estates	-	-	1	1	1	2	5	8	7	700.00%	2	15	13	650.00%	
Northstar/ Martis	-	4	7	11	-	1	3	4	(7)	(63.64%)	37	9	(28)	(75.68%)	
Olympic Heights	-	1	8	9	1	11	9	21	12	133.33%	27	113	86	318.52%	
Ponderosa	1	1	4	6	1	3	2	6	-	0.00%	11	40	29	263.64%	
Prosser	-	2	-	2	3	4	7	14	12	600.00%	21	50	29	138.10%	
Tahoe Donner	-	1	1	2	-	1	6	7	5	250.00%	8	35	27	337.50%	
Unknown/Other	-	-	-	-	-	-	-	-	-	0.00%	10	14	4	40.00%	
Total Comments	1	13	24	38	9	30	43	82	44	115.79%	136	351	215	158.09%	
Comment Type															
Piston	-	3	7	10	4	10	16	30	20	200.00%	27	116	89	329.63%	
Turbine	-	3	8	11	3	11	5	19	8	72.73%	20	65	45	225.00%	
Jet	1	4	5	10	2	7	18	27	17	170.00%	69	137	68	98.55%	
Helo	-	1	2	3	-	2	3	5	2	66.67%	3	8	5	166.67%	
Unknown	-	2	2	4	-	-	1	1	(3)	(75.00%)	17	25	8	47.06%	
Total Comments	1	13	24	38	9	30	43	82	44	115.79%	136	351	215	158.09%	
Operations per Comment	-	-	-	-	-	-	-	-	-	0.00%	-	-	-	-	
	-	-	-	122	-	-	-	79	(43)	(34.91%)	157	73	(84)	(53.43%)	