

LEFT: TRUCK FOUR Departure—BE40 over TRUCK
 ABOVE: KTRK Advertised NAP Departure Map.

The track above shows a typical TRUCK FOUR departure from 29. The text below is the verbal instruction for the procedure.

TAKEOFF RUNWAY 29: Climbing right turn to 11 500 on heading 320° and SWR R-002 to TRUCK INT, thence. . . , or for climb in visual conditions cross Truckee-Tahoe Airport heading 290° at or above 9100, then proceed on SWR R-002 to TRUCK INT. When executing VCOA, notify ATC prior to departure. thence. . .

. . . continue climb in TRUCK INT holding pattern to cross TRUCK INT at or above 11 500 before proceeding on course.

NOISE COMPLAINT REPORT

COMPLAINT ID: 12894

COMPLAINT TYPE: Low And Loud

OPERATION TYPE: Arrival

RUNWAY: 29

A/C TYPE: TRIN

DATE AND TIME: Aug 01 2015, 04:54 PM

POINT OF CLOSEST APPROACH(PCA): 0.1 nm

ALTITUDE AT PCA: 7400 ft



Trinidad making a non-standard entry for 29, looks like aborted right pattern for 29. Spoke to pilots and requested mid-field crosswind entry for 29 for future arrivals from the north and discuss glider area safety concerns. Altitude was 7,400' so reasonably high at PCA. This aircraft was contacted for a 10:16 arrival on 8/3 as well.

NOISE COMPLAINT REPORT

COMPLAINT ID: 13229

COMPLAINT TYPE: Off Course

OPERATION TYPE: Departure

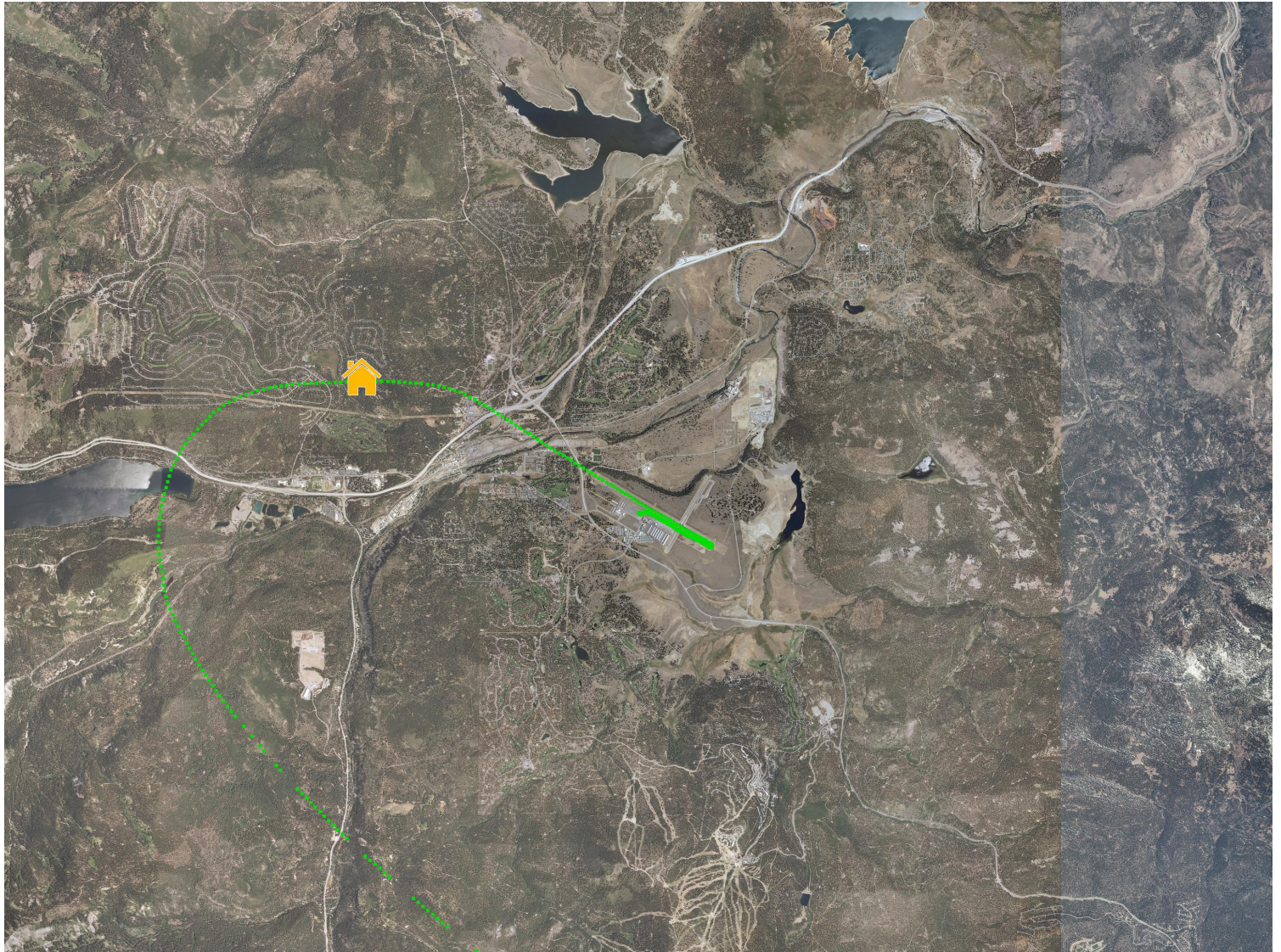
RUNWAY: 29

A/C TYPE: C525

DATE AND TIME: Aug 02 2015, 08:19 AM

POINT OF CLOSEST APPROACH(PCA): 0.03 nm

ALTITUDE AT PCA: 7500 ft

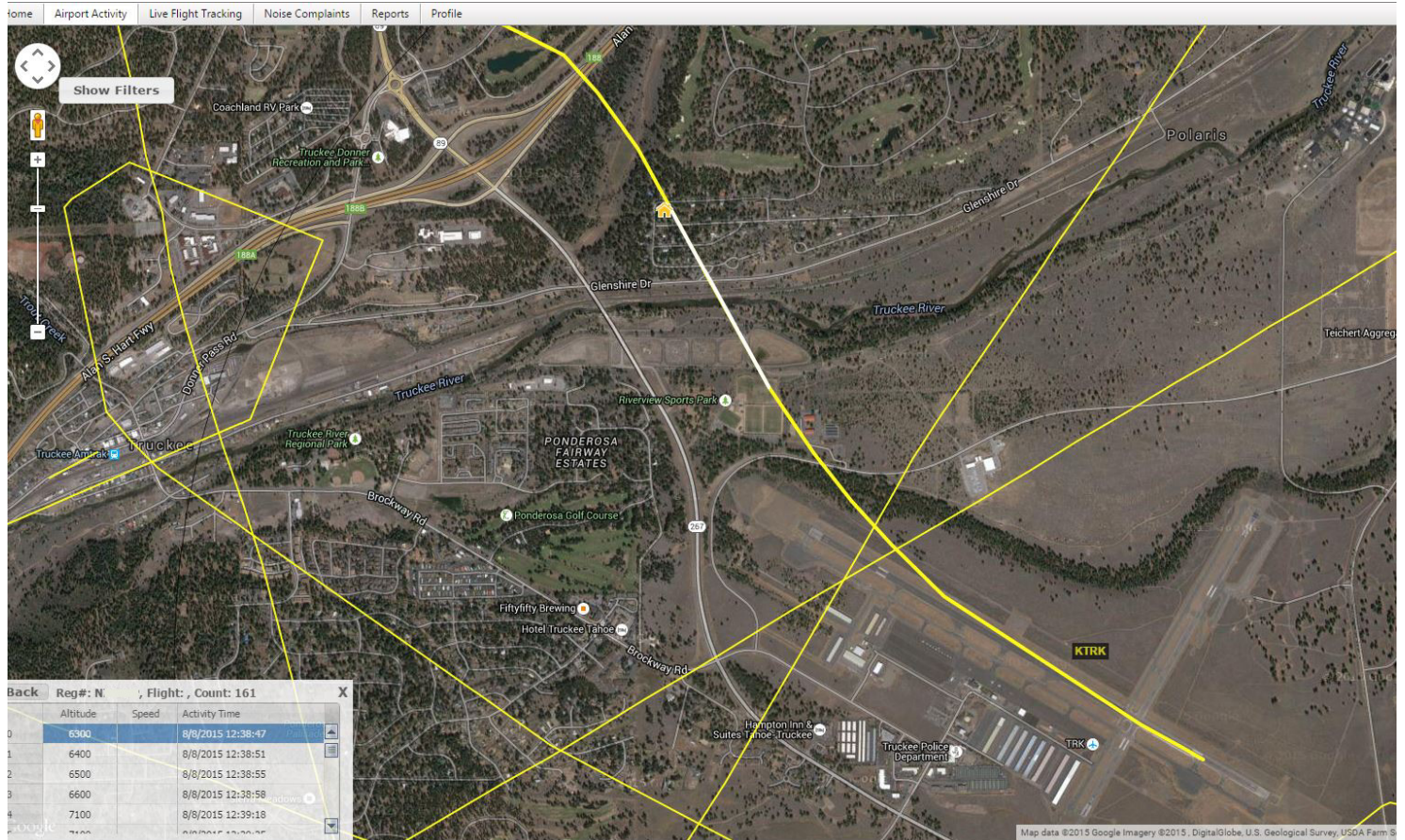


Citation 525 departing 29 straight out. Emailed and corresponded with crew.

NOISE COMPLAINT REPORT

COMPLAINT ID: 15064 & 14668
COMPLAINT TYPE: Low And Loud
OPERATION TYPE: Dept
RUNWAY: 29
A/C TYPE: SR22

DATE AND TIME: Aug 08 2015, 12:38 PM
POINT OF CLOSEST APPROACH(PCA): unk
ALTITUDE AT PCA: 6300 ft



2 complaints on piston 29 departure.

Detail of comment: "Prop plane flying low and loud over Olympic Heights. Woke kids up from nap."

SR22 Right of Bypass & over Olympics Heights. Spoke to Pilot who went further right for traffic avoidance.

NOISE COMPLAINT REPORT

COMPLAINT ID: 15039

COMPLAINT TYPE: Low

OPERATION TYPE: Arrival

RUNWAY: 29

A/C TYPE: C550

DATE AND TIME: Aug 08 2015, 01:49 PM

POINT OF CLOSEST APPROACH(PCA): 0.18 nm

ALTITUDE AT PCA: 9800 ft

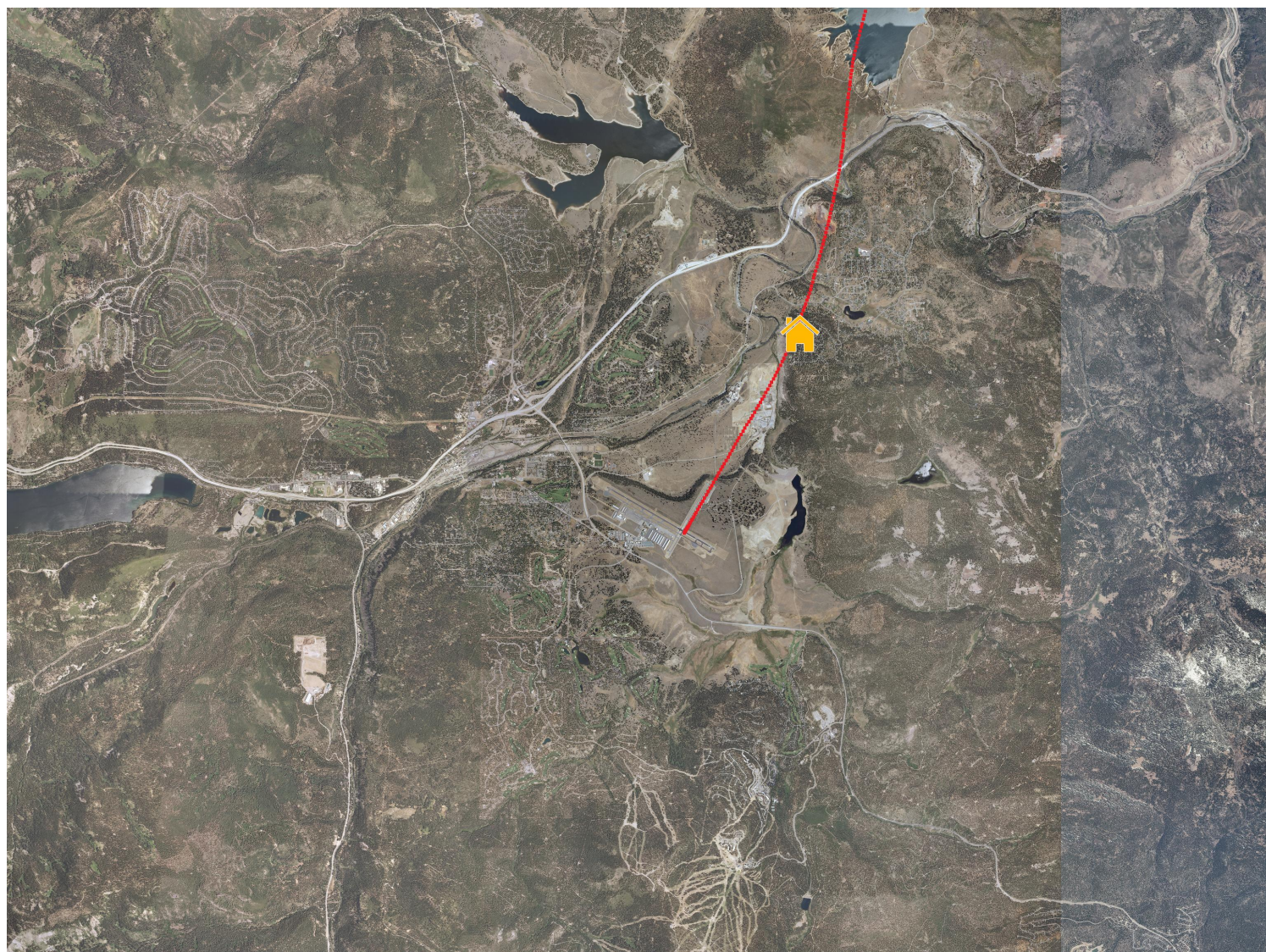


C550 Arrival from the south making right crosswind entry to 29. Called operator. Staff emailed NAP and website links to Chief Pilot who said he will share with all 18 pilots of this small charter company.

NOISE COMPLAINT REPORT

COMPLAINT ID: 15215
COMPLAINT TYPE: Low
OPERATION TYPE: Arrival
RUNWAY: 20
A/C TYPE: CL60

DATE AND TIME: Aug 11 2015, 08:45 PM
POINT OF CLOSEST APPROACH(PCA): 0.07 nm
ALTITUDE AT PCA: 6500 ft



RNAV Instrument Arrival to 20, generated 3 complaints. Gusty SSW winds into early evening. Staff emailed and called all available contacts to discuss possible alternative routes. No reply. Staff is researching better contact info. Aircraft history: 1 visit

NOISE COMPLAINT REPORT

COMPLAINT ID: 15340

COMPLAINT TYPE:

OPERATION TYPE: Departure

RUNWAY: 29

A/C TYPE: PC12

DATE AND TIME: Aug 13 2015, 09:00 AM

POINT OF CLOSEST APPROACH(PCA): 0.04 nm

ALTITUDE AT PCA: 6800 ft



PC12 Bypass Departure off 29 just slightly over the outer street of Olympic Heights. Staff emailed operator. Locally based operator apologized and said he would (and was) trying to follow NAP.

NOISE COMPLAINT REPORT

COMPLAINT ID: 15445

COMPLAINT TYPE: Off Course

OPERATION TYPE: Departure

RUNWAY: 29

A/C TYPE: C206

DATE AND TIME: Aug 13 2015, 09:27 AM

POINT OF CLOSEST APPROACH(PCA): 0.02 nm

ALTITUDE AT PCA: 6400 ft



Cessna 206 Bypass departure a bit right. Staff made outreach. Spoke to PIC.

NOISE COMPLAINT REPORT

COMPLAINT ID: 15856

COMPLAINT TYPE: Off Course

OPERATION TYPE: Departure

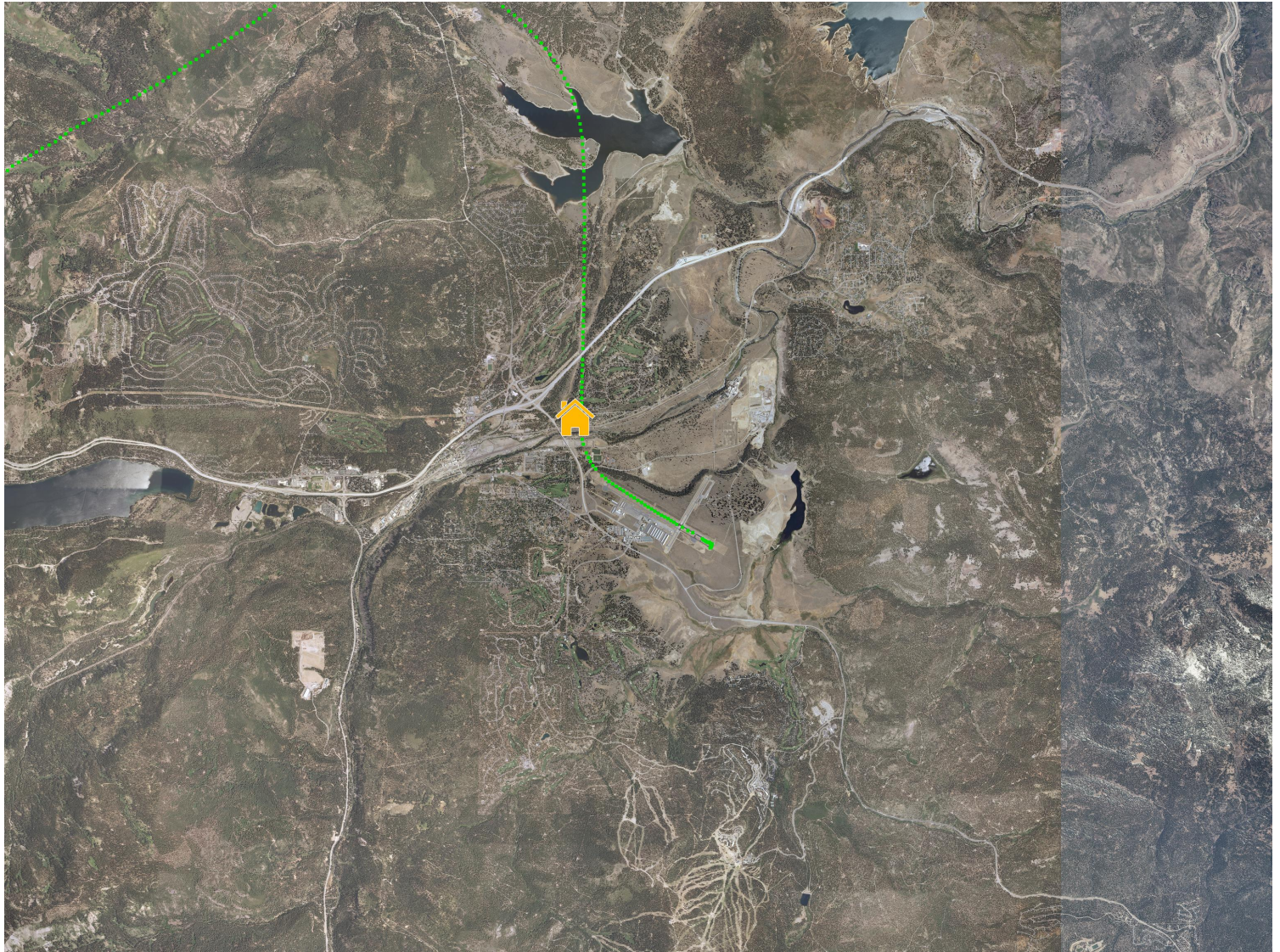
RUNWAY: 29

A/C TYPE: C25A

DATE AND TIME: Aug 14 2015, 05:35 PM

POINT OF CLOSEST APPROACH(PCA): 0.03 nm

ALTITUDE AT PCA: 6900 ft



Just a little right of the Bypass. Emailed and heard back from operator and they will aim for the Bridge in the future.

NOISE COMPLAINT REPORT

COMPLAINT ID: 16486

COMPLAINT TYPE: Low And Loud

OPERATION TYPE: DEPARTURE

RUNWAY: 29

A/C TYPE: Piston

DATE AND TIME: Aug 16 2015, 01:42 PM

POINT OF CLOSEST APPROACH(PCA): 0.12 nm

ALTITUDE AT PCA: 6500 ft



Departure over west end of Olympic Heights/East of Bypass, but can't confirm tail number. Poor track quality and could not confirm position of aircraft. Track appears to be an attempted Bypass Departure. Staff will look for recorded audio when time permits to determine aircraft identity.

NOISE COMPLAINT REPORT

COMPLAINT ID: 16468

COMPLAINT TYPE:

OPERATION TYPE: Departure

RUNWAY: 29

A/C TYPE: C210

DATE AND TIME: Aug 17 2015, 07:00 AM

POINT OF CLOSEST APPROACH(PCA): 0.25 nm

ALTITUDE AT PCA: 6500 ft



Perfect Bypass departure but at 6:45 am. Pilot was not aware of the new curfew of 7 am but is fine with holding off on future departures before 7 am.

NOISE COMPLAINT REPORT

COMPLAINT ID: 16467

COMPLAINT TYPE:

OPERATION TYPE: Departure

RUNWAY: 29

A/C TYPE: C210

DATE AND TIME: Aug 17 2015, 09:35 AM

POINT OF CLOSEST APPROACH(PCA): 0.09 nm

ALTITUDE AT PCA: 6700 ft



C210 Departure just over the west end of Olympic Heights. No tel or email data available so a letter has been sent to the registry address.

NOISE COMPLAINT REPORT

COMPLAINT ID: 17166

COMPLAINT TYPE: Low

OPERATION TYPE: Departure

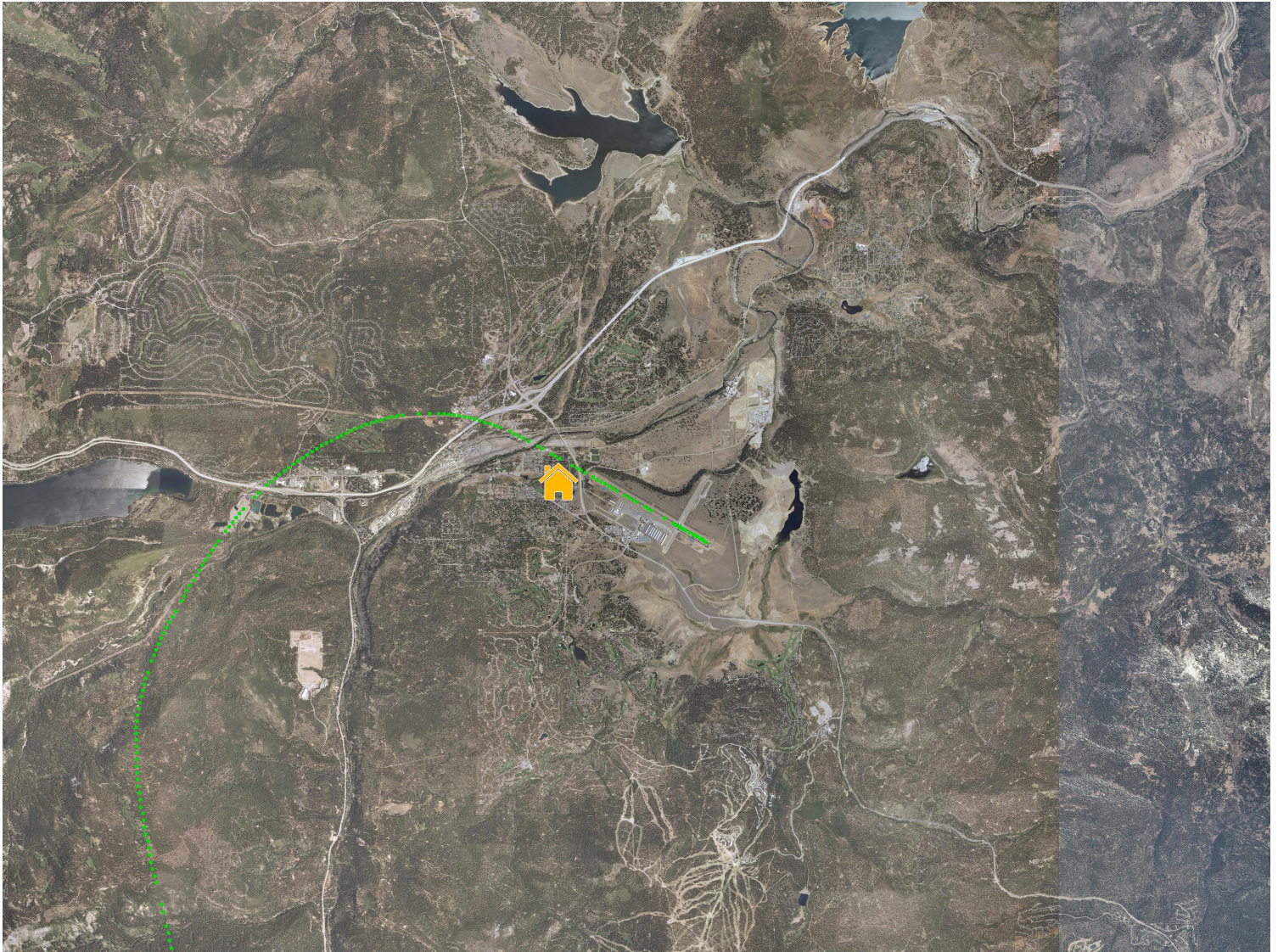
RUNWAY: 29

A/C TYPE: GLF4

DATE AND TIME: Aug 20 2015, 03:51 PM

POINT OF CLOSEST APPROACH(PCA): 0.21 nm

ALTITUDE AT PCA: 6400 ft



Gulfstream 4 departed 29 straight out. Staff spoke to flight crew.

NOISE COMPLAINT REPORT

COMPLAINT ID: 17587

COMPLAINT TYPE: Loud Disturbance

OPERATION TYPE: Arrival

RUNWAY: 11

A/C TYPE: C56X

DATE AND TIME: Aug 23 2015, 04:33 PM

POINT OF CLOSEST APPROACH(PCA): 0.24 nm

ALTITUDE AT PCA: 7000 ft



Citation 560XL visual arrival to Runway 11. 2 Comments received on this arrival. Emailed operator.

NOISE COMPLAINT REPORT

COMPLAINT ID: 17426

COMPLAINT TYPE: Off Course

OPERATION TYPE: Departure

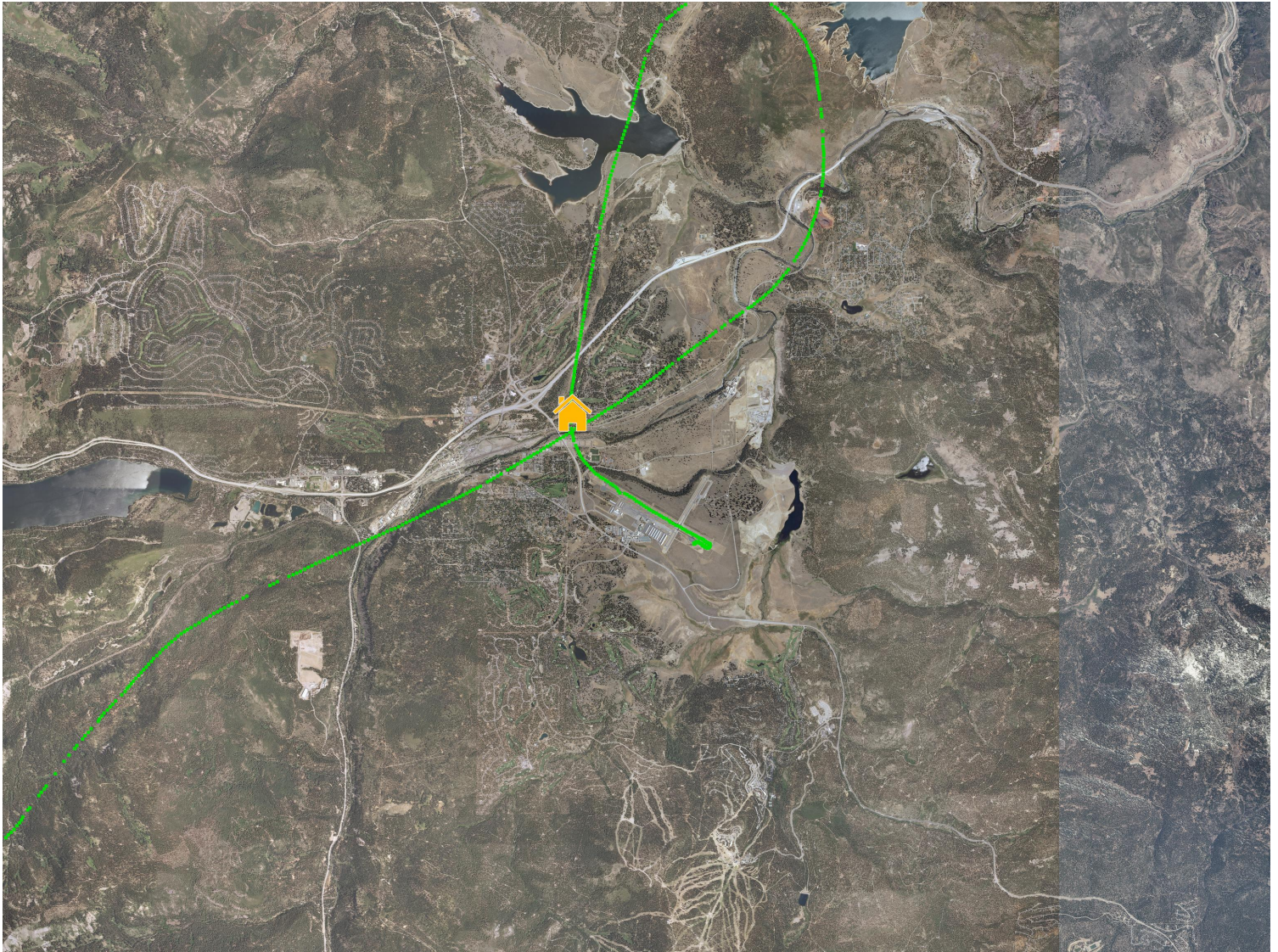
RUNWAY: 29

A/C TYPE: COL3

DATE AND TIME: Aug 23 2015, 04:55 PM

POINT OF CLOSEST APPROACH(PCA): 0.04 nm

ALTITUDE AT PCA: 6700 ft



Columbia 300 Departure 29 with climbing right turn near west end of Olympic Heights. Called pilot.

NOISE COMPLAINT REPORT

COMPLAINT ID: 17459

COMPLAINT TYPE: FREQUENCY

OPERATION TYPE: ALL

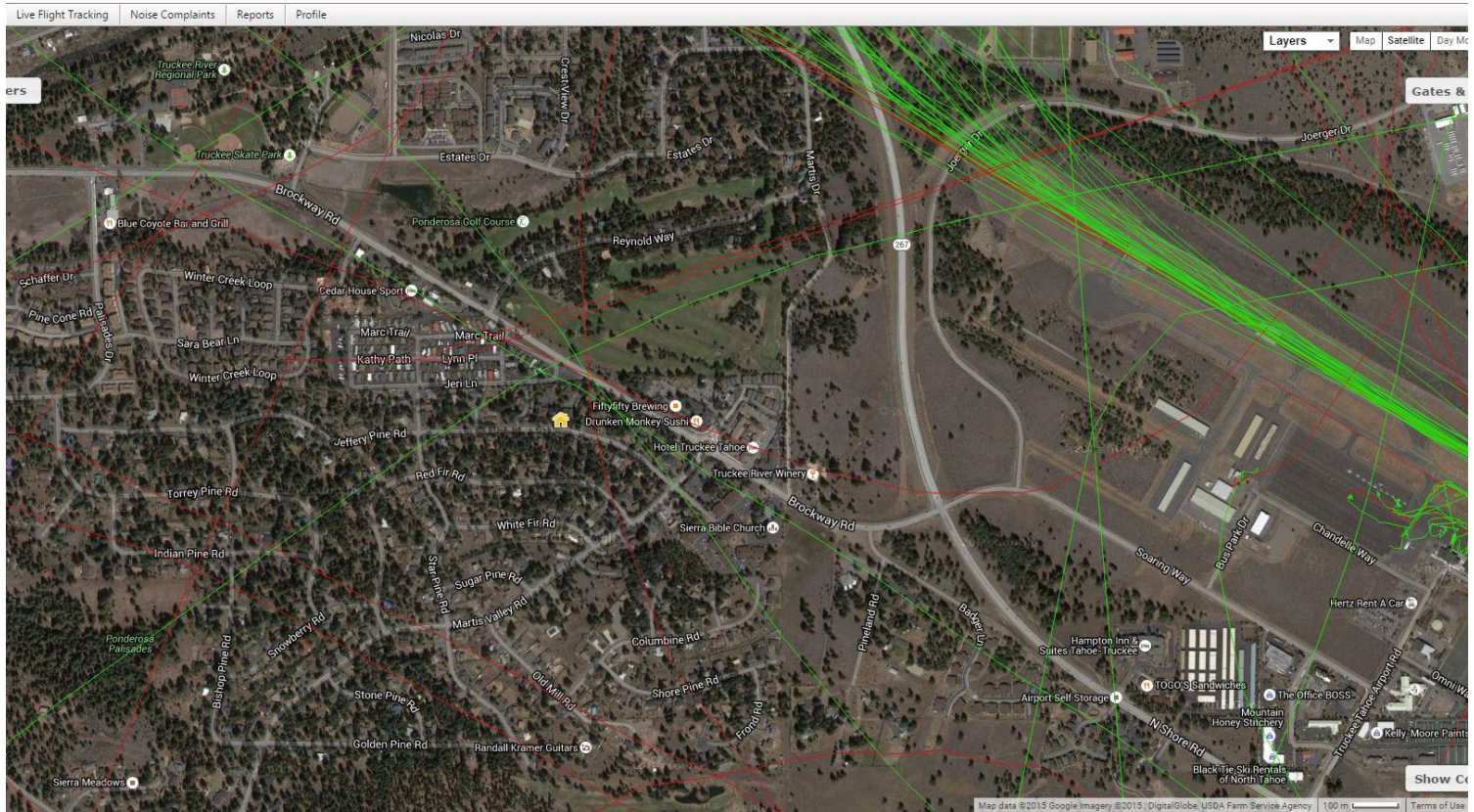
RUNWAY: ALL

A/C TYPE: ALL

DATE AND TIME: Aug 23 2015, 08:00 AM

POINT OF CLOSEST APPROACH(PCA): nm

ALTITUDE AT PCA: ft



Comment: "The constant noise I have to hear these days even from 2 years ago is absurd destructive and makes no sense for the small little town of Truckee California. Again it's a constant thing all day long the noise is so loud sometimes it sends me running outside to see how big the plane is only to find a small jet flying in the air"

Staff emailed and offered to call Sierra Meadows commenter but did not hear back. This image is a composite of activity for the whole day. In terms of flights, staff estimates that there were 10 identifiable aircraft near (less than .5nm) the residence between 11:20 am and 6:30 pm while in flight.

This track is included as an example of comments which site the frequency of operations as the source of annoyance. The 23rd, a Sunday, was the 2nd busiest day of August.

NOISE COMPLAINT REPORT

COMPLAINT ID: 17386

COMPLAINT TYPE: Loud Disturbance

OPERATION TYPE: ° ∞

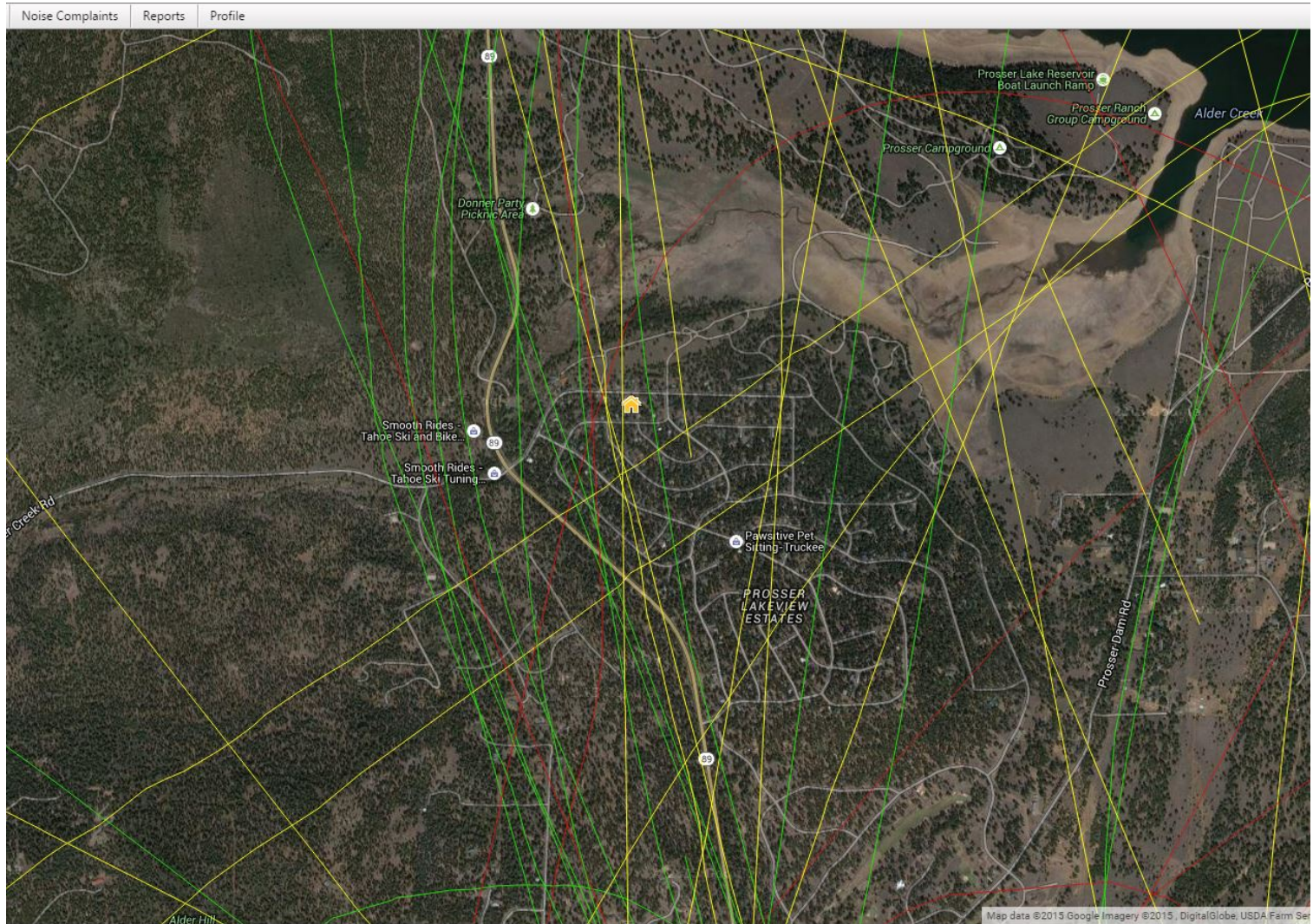
RUNWAY:

A/C TYPE:

DATE AND TIME: Aug 23 2015, 09:32 AM

POINT OF CLOSEST APPROACH(PCA): nm

ALTITUDE AT PCA: ft



Composite of tracks for Sunday 8/23/15 between 8am & 6pm centered on Prosser Lakeview. The residence location is approximately 3.38 miles NNW from Runway 11 threshold. 15 comments were received and some comments reference multiple aircraft. All comments were from one household.

This composite image includes overflights, in yellow, up to and including the flight levels.

16 tracks were in the immediate vicinity or within the general neighborhood boundary.

Comments and times are listed on the following page. Staff looked into these tracks and a synopsis is included.

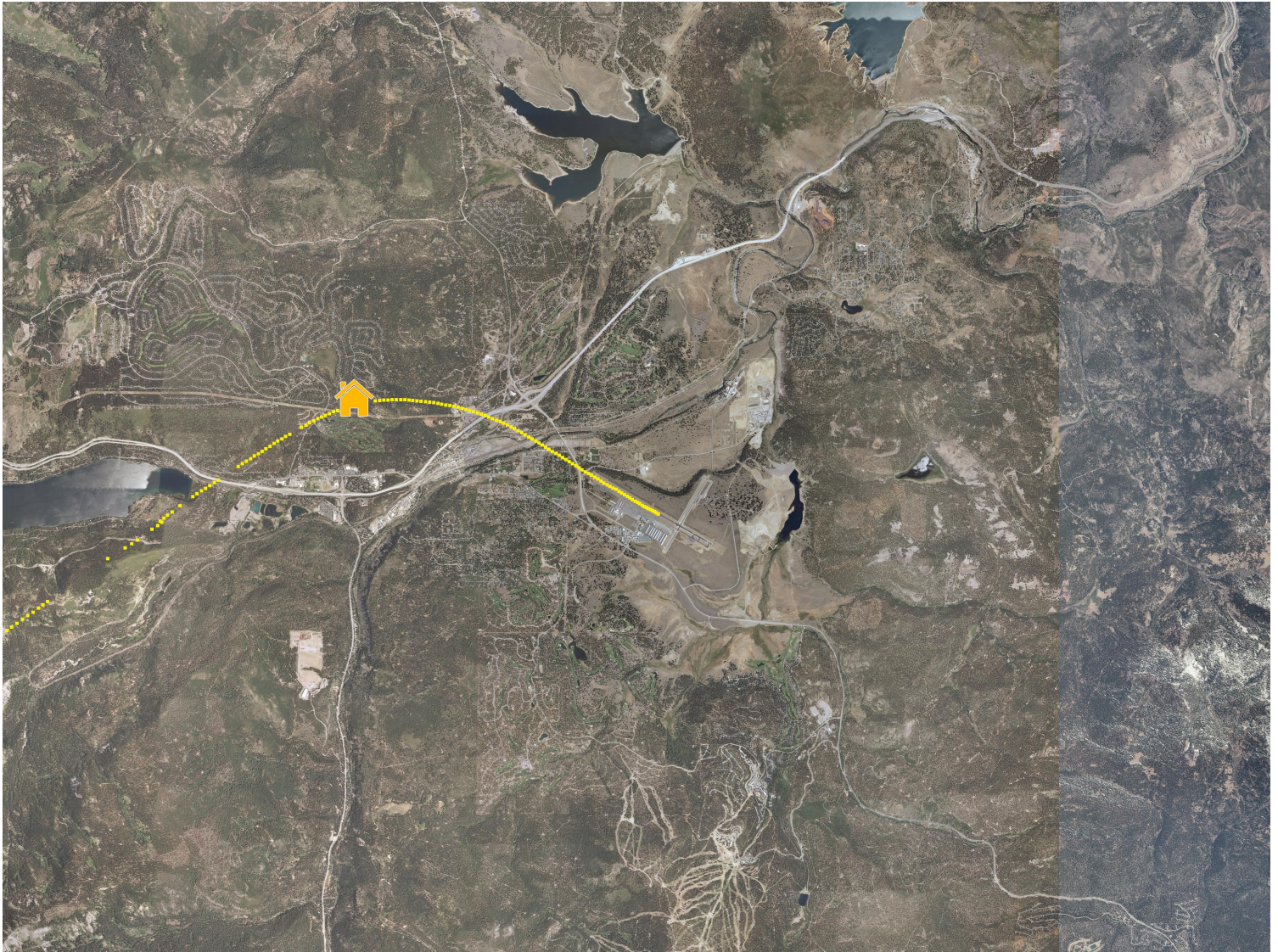
15 comments 8 am - 5 pm, One Commenter

- 8:00 am: A loud jet flying over the neighborhood early Sunday morning.
Pilatus PC12 7,600' PCA Departure from 29
- 9:00 am: A very loud jet flew low over the neighborhood. The time is approximate.
Gulfstream 4 Departure 29 9,200' PCA Aircraft was west of 89
- 09:32 am: A loud propeller plane flew low over the neighborhood. Two jets flew over the neighborhood earlier. King Air 350 Arrival 20, 1.8nm to the east at 6,900'
- 10:04 am: Loud, small propeller plane buzzing over the neighborhood on Sunday morning.
C172 Departure from 29 at 7,400 well West of 89
- 10:10 am: Two more loud propeller planes flying over the neighborhood Sunday morning.
2 King Air 350's: 8,500 at PCA Departure from 29 & 7,800 PCA W of 89 Departure from 29
- 02:20 pm: Yet another loud jet flying over the neighborhood Sunday afternoon, disturbing residents and visitors in their houses and outdoors. Please do something about it. Citation 560XL Departure 29 & 11,700' over residence (about 6,000' agl)
- 02:54 pm: An extremely loud plane flew low over the neighborhood, one of many this Sunday. This one was either a propeller or a turboprop plane. Cirrus Departure 29, 7,600' over resident
- 03:02 pm: Yet another loud plane flying over the neighborhood this Sunday. UNK ACFT Transitioning NE - SW from Reno area, 11,200' PCA SE of resident
- 03:09 pm: Two loud propeller planes flying over the neighborhood followed by a jet. 3? PC12 Arrival 20 8,300' PCA – Gusting 21kts from 220
- 03:48 pm: Yet another loud propeller plane flying right through the middle of neighborhood Sunday afternoon. TBM700 Arrival 20 8,000' PCA .82 nm lateral
- 03:57 pm: A large and extremely noisy private jet flying low through the middle of a residential Truckee neighborhood. Gulfstream 4 Departing 29 Truck Four 7,900' at PCA .41 nm east
- 04:04 pm: A large, loud turboprop plane just flew over houses through the middle of a residential Truckee neighborhood only minutes after a noisy large private jet flew over the same neighborhood, as did numerous other jets and propeller planes all day Sunday. PC12 Departure Runway 29, 7,600' at PCA, .13nm east
- 04:23 pm: Yet another, one of many this Sunday, loud private jet flying through the middle of a Truckee residential neighborhood. C56X visual arrival to 11, 7000' PCA over resident staff made outreach to company
- 04:30 pm: Yet another noisy private jet flying through the middle of a residential Truckee neighborhood this Sunday. Lear45 Departure 29, 9,700 PCA .32nm (West of 89)
- 04:40 pm: Yet another noisy private jet flying through the middle of a residential Truckee neighborhood this Sunday. CL60 9400' Truck Four or C56X Transitioning at 20,000msl

NOISE COMPLAINT REPORT

COMPLAINT ID: 17461
COMPLAINT TYPE: Other
OPERATION TYPE: Arrival
RUNWAY: 11
A/C TYPE: C25A

DATE AND TIME: Aug 24 2015, 06:25 AM
POINT OF CLOSEST APPROACH(PCA): 0.05 nm
ALTITUDE AT PCA: 7100 ft



Citation CJ2 made visual arrival to 11 at 6:27 am then departed (not pictured) via 29 at 6:46 am. Staff talked with operator.

NOISE COMPLAINT REPORT

COMPLAINT ID: 17462

COMPLAINT TYPE: Off Course

OPERATION TYPE: Departure

RUNWAY: 29

A/C TYPE: SR22

DATE AND TIME: Aug 24 2015, 08:57 AM

POINT OF CLOSEST APPROACH(PCA): 0.16 nm

ALTITUDE AT PCA: 7600 ft



Cirrus making a Bypass departure. Track is compliant, but included here to illustrate that the Bypass Departure creates impacts to Tahoe Donner north of Coyote Moon golf course.

NOISE COMPLAINT REPORT

COMPLAINT ID: 17477

COMPLAINT TYPE: Off Course

OPERATION TYPE: Departure

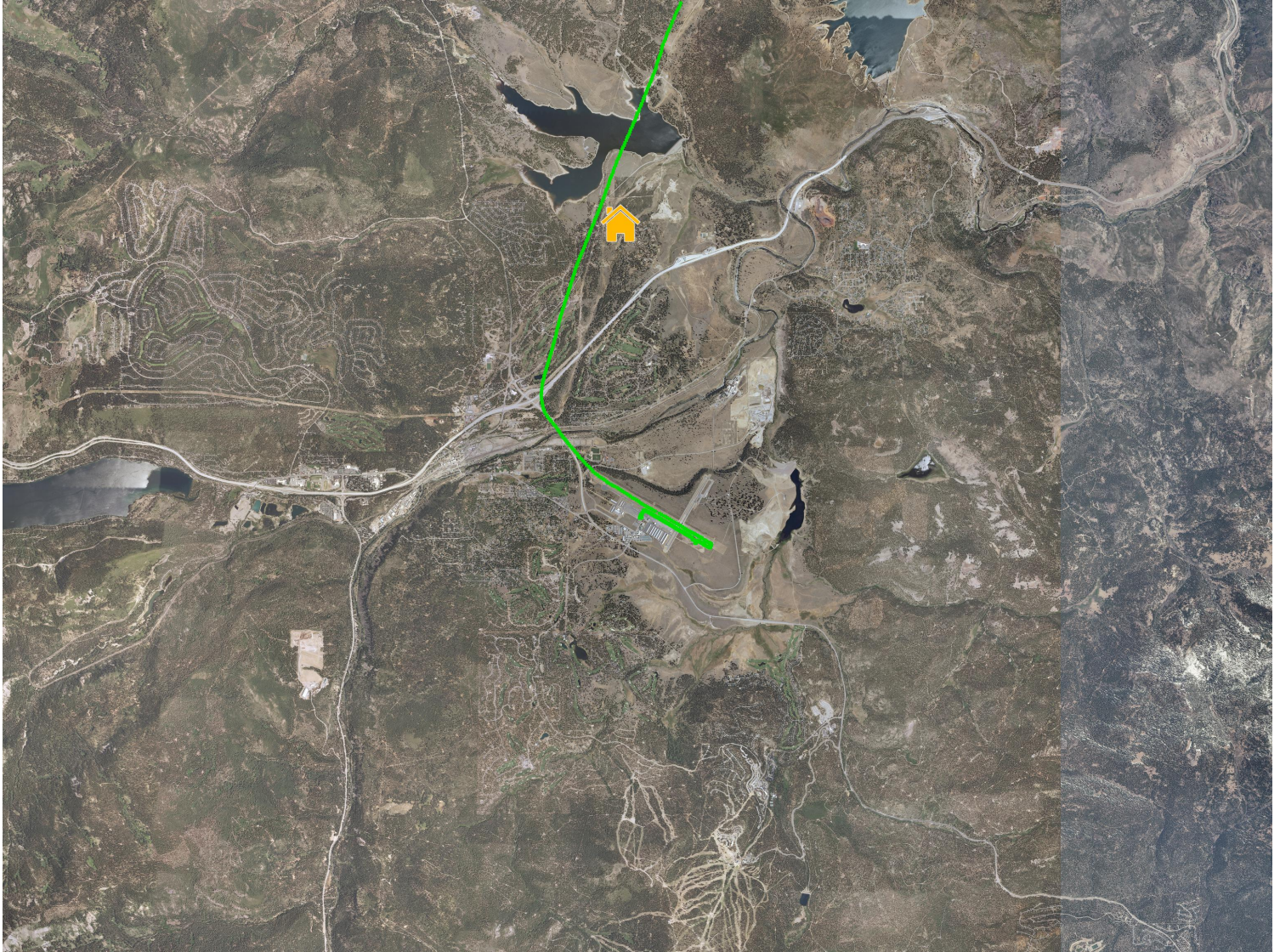
RUNWAY: 29

A/C TYPE: C172

DATE AND TIME: Aug 24 2015, 10:55 AM

POINT OF CLOSEST APPROACH(PCA): 0.27 nm

ALTITUDE AT PCA: 6900 ft



Commenter believes aircraft use his pond as a VFR waypoint. Staff makes outreach to rental aircraft operator and they are very cooperative. CFIs are largely on board too and staff has discussed this caller with them. This is included because it is a grey area for compliance. It is a largely unpopulated area. Ideal would be follow 80, but if we require that for NAP we are going to be doing outreach on every VFR departure to the north....

NOISE COMPLAINT REPORT

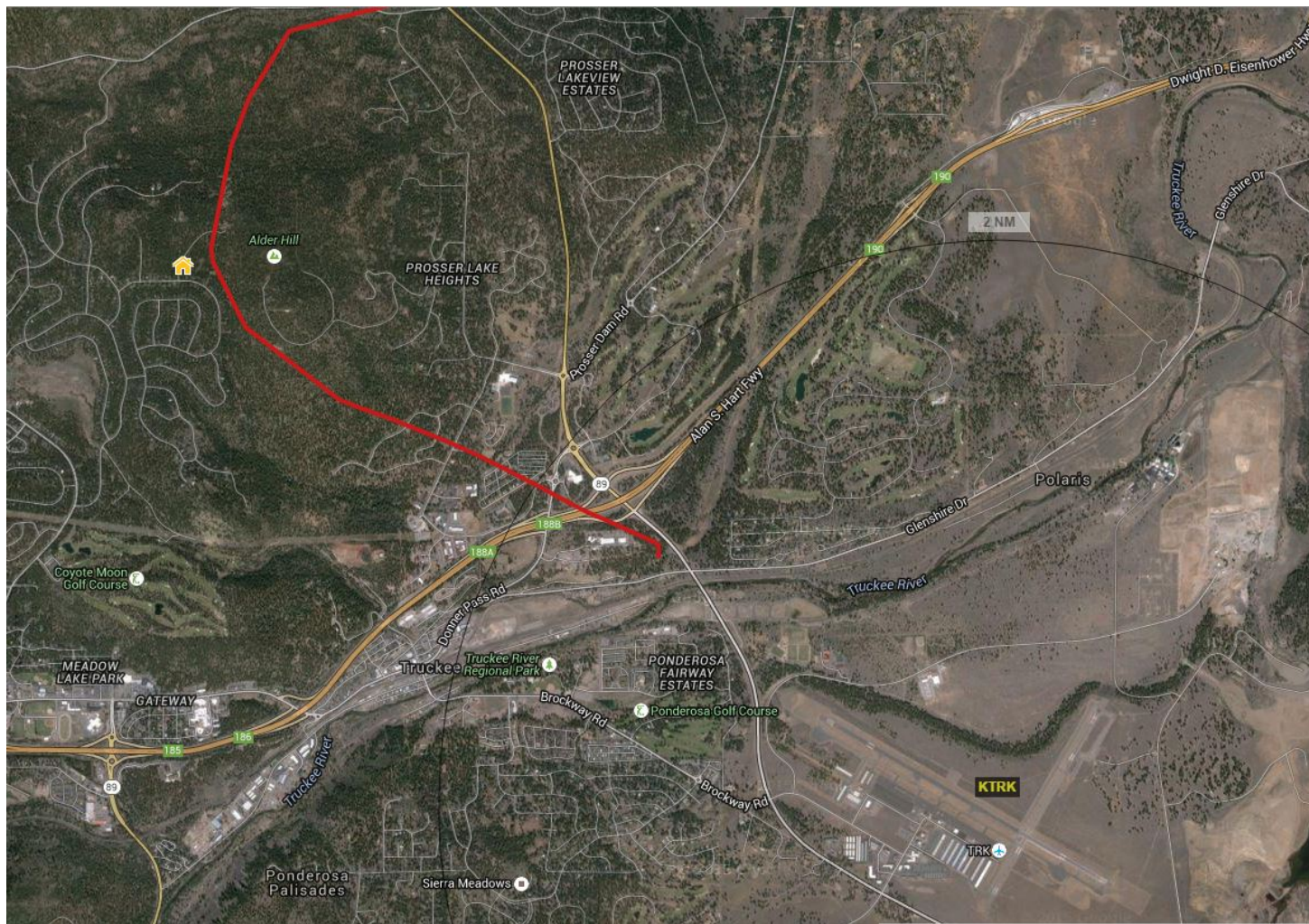
COMPLAINT TYPE: Low And Loud

DATE AND TIME: Aug 24 2015, 02:32 PM

POINT OF CLOSEST APPROACH(PCA): nm

ALTITUDE AT PCA: 7,200ft

A/C TYPE: CL30



Challenger 300 left traffic for 11, visual arrival. Made outreach to Operator via company liason. Estimated 600' agl.

NOISE COMPLAINT REPORT

COMPLAINT ID: 17592

COMPLAINT TYPE: Low And Loud

OPERATION TYPE: Departure

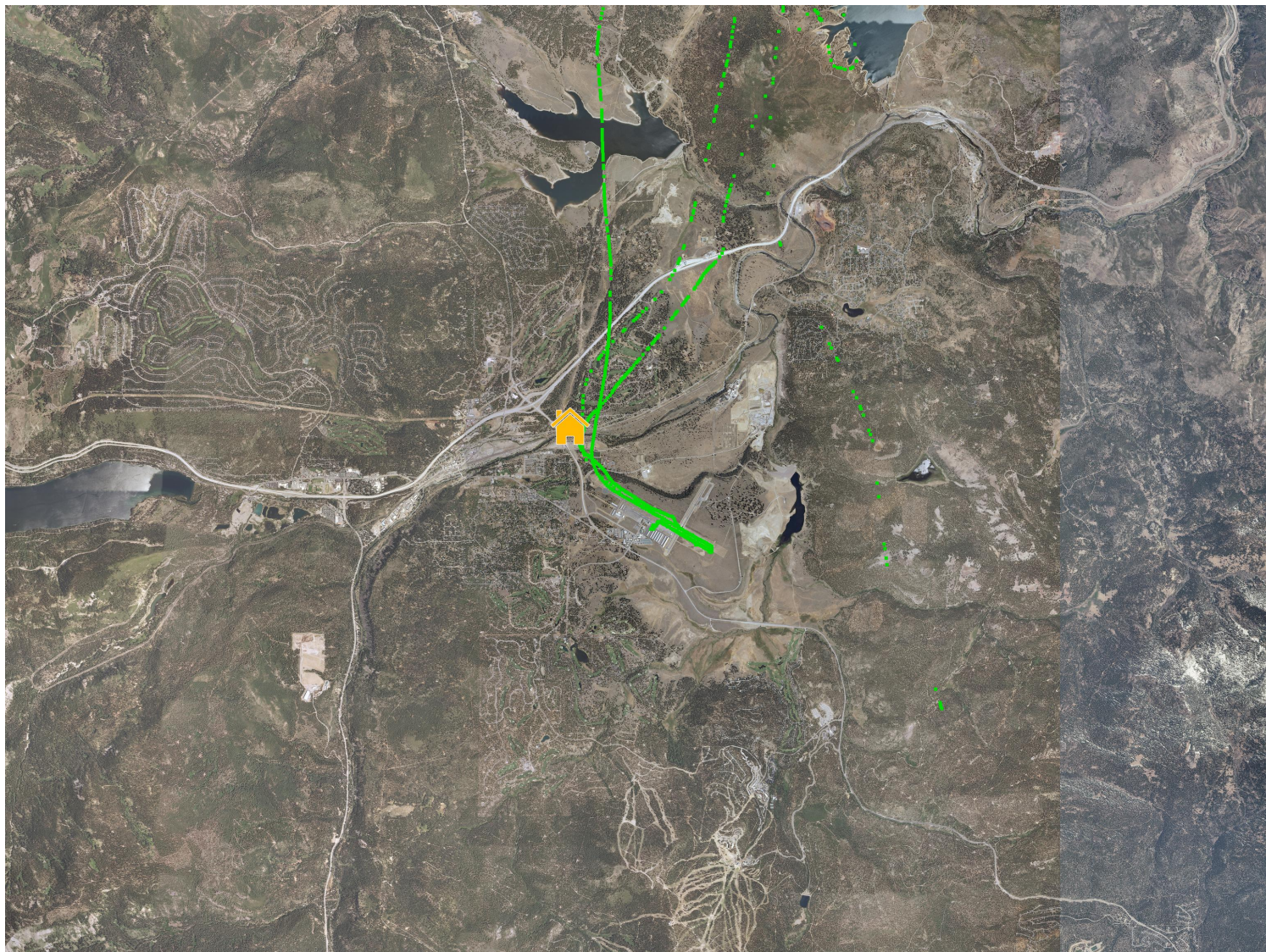
RUNWAY: 29

A/C TYPE: PA28, C172, MSQ2

DATE AND TIME: Aug 25 2015, 09:30 AM

POINT OF CLOSEST APPROACH(PCA): 0.11 nm

ALTITUDE AT PCA: 6500 ft



Multiple aircraft (3) in the space of an hour and a half. 3 overflight of Olympic Heights. Caller just wanted to request they not fly over the neighborhood. Emails & mail sent to 3 operators.

NOISE COMPLAINT REPORT

COMPLAINT ID: 17751
COMPLAINT TYPE: Low
OPERATION TYPE: Arrival
RUNWAY: 29
A/C TYPE: GLF5

DATE AND TIME: Aug 26 2015, 06:15 PM
POINT OF CLOSEST APPROACH(PCA): 0.21 nm
ALTITUDE AT PCA: 7400 ft



Gulfstream 5 arrival right traffic to 29. Generated 2 comments both in Glenshire. Staff responded to both commenters and to pilots.

NOISE COMPLAINT REPORT

COMPLAINT ID: 17781
COMPLAINT TYPE: Low
OPERATION TYPE: Arrival
RUNWAY: 20
A/C TYPE: PC12

DATE AND TIME: Aug 27 2015, 05:25 PM
POINT OF CLOSEST APPROACH(PCA): 0.07 nm
ALTITUDE AT PCA: 6800 ft



PC12 went around on 20. Pilot said there was wind shear on short final and circled left to keep an inbound glider in sight. Investigation of the day's weather indicated peak gusts of 23mph from the SSW. Staff spoke to the local operator who is very knowledgeable about NAP and maintains that the initial track illustrates a commitment to minimizing impacts to the community as well as to safety. An email follow-up was sent to the commenter.

NOISE COMPLAINT REPORT

COMPLAINT ID: 17784

COMPLAINT TYPE: Loud Disturbance

OPERATION TYPE: Arrival

RUNWAY: 20

A/C TYPE: AS50

DATE AND TIME: Aug 27 2015, 10:40 PM

POINT OF CLOSEST APPROACH(PCA): 0.67 nm

ALTITUDE AT PCA: 5800 ft



Comment: "loud helicopter noise from 10:30 pm on. Seems to be circling airport. Very noisy. & Loud circling helicopters. so much noise pollution from this airport."

Staff spoke to EMS crew who were called on, held, then called off an EMS operation. Note: circling was over airfield and off-airport activity was over roads.

NOISE COMPLAINT REPORT

COMPLAINT ID: 18218

COMPLAINT TYPE: Loud Disturbance

OPERATION TYPE: Departure

RUNWAY: 29

A/C TYPE: PC12

DATE AND TIME: Aug 30 2015, 06:05 PM

POINT OF CLOSEST APPROACH(PCA): 0.05 nm

ALTITUDE AT PCA: 6400 ft



PC12 Bypass Departure a touch too far east and over outer end of Olympic Heights. Staff emailed operator.