

RECONSTRUCT APRON A2

May-Oct 2025

WHAT IS APRON A2?



WHY WE ARE DOING THIS:

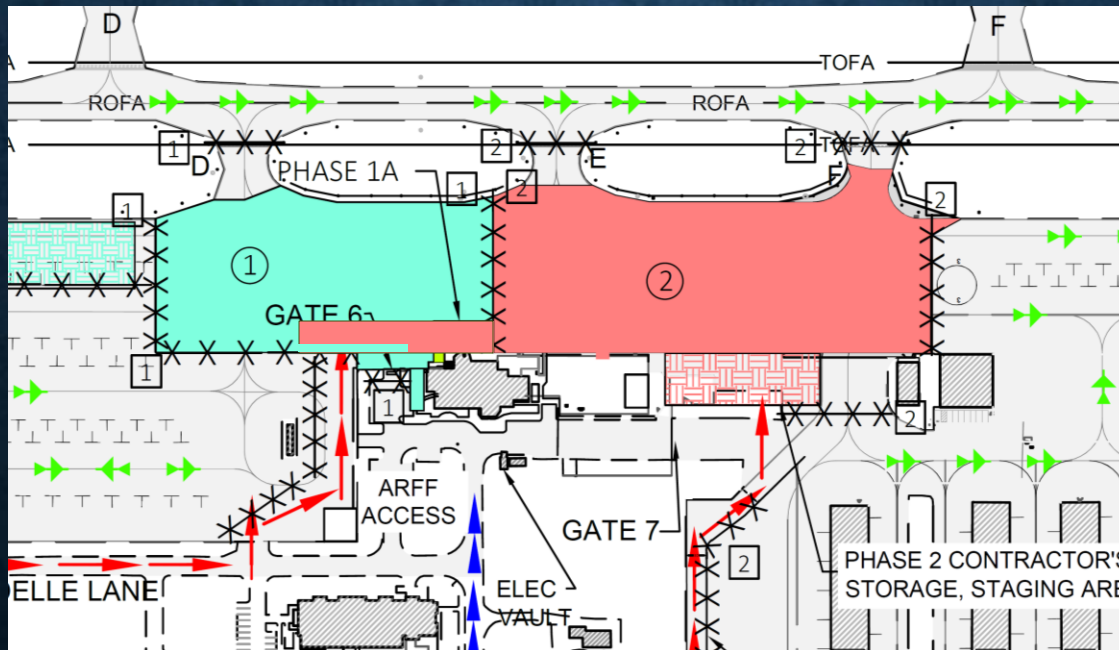
- Long term analysis indicates deep seated failures will happen as soon as 2026 based on an assumed usage of weight and frequency. We have exceeded those assumptions.
- Based on current usage the full thickness of surface and underlying pavement section needs to be 18", we have only 9."
- Our Terminal faces the ramp to the North and creates a shadow in the Winter that sustains clear ice that is a danger to foot traffic.

THE PROCESS

- Existing surface and base material will be pulverized into a gravel base rock to use as part of the new pavement section for the new Apron.
- Approximately 9" of soils below the existing pavement section will be removed and hauled off site to make room for an 18" pavement system
- Polymer Modified Asphalt placed on top of new aggregate base with a high load rating will be applied to accommodate our larger visitors
- Surface will be repainted when project is complete.

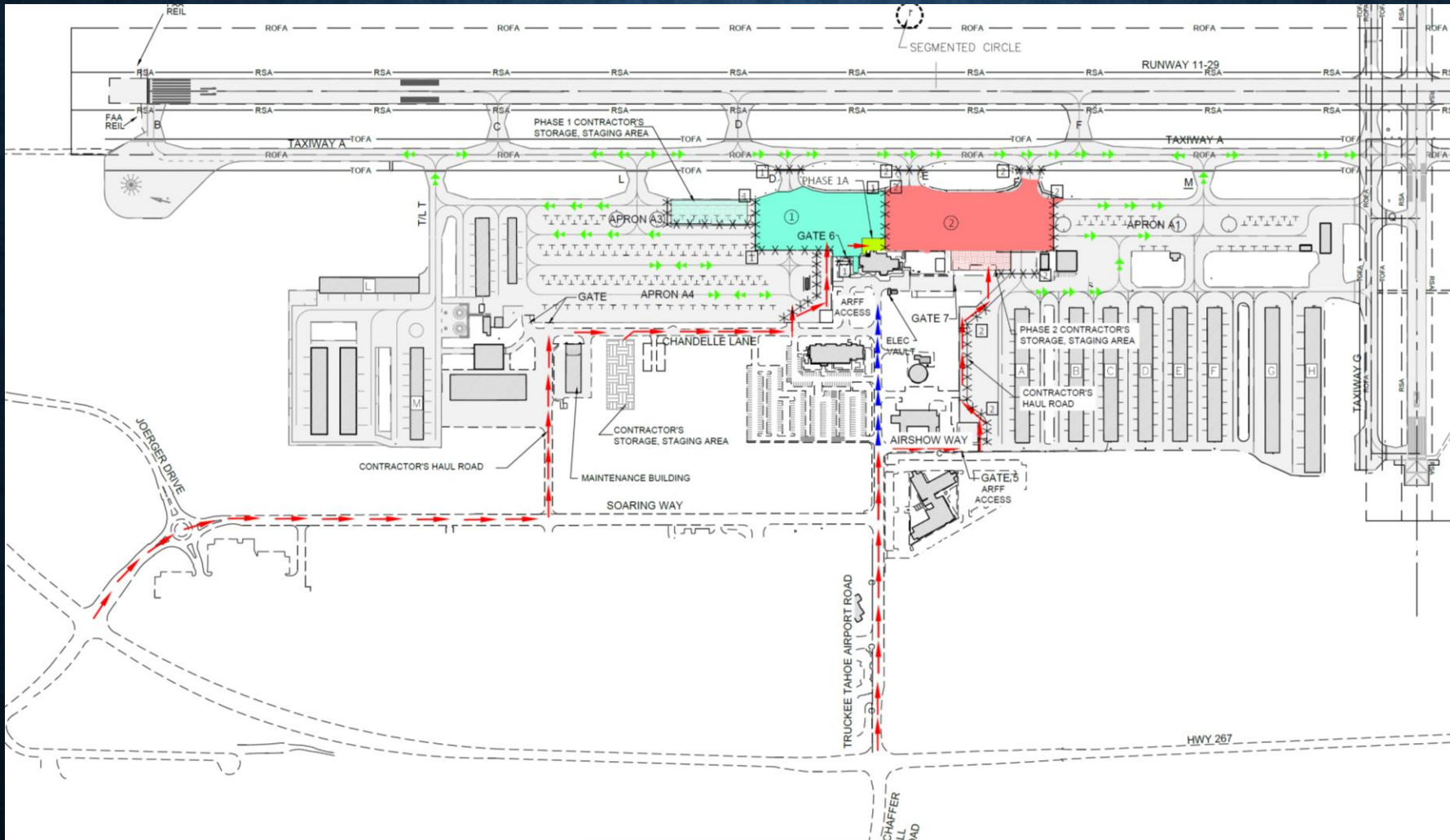
TIMELINE*

- Intent is a 12-week project duration
- Start date is not yet determined
- Project will happen in two phases beginning on the West side.
- Ideally each phase targets six weeks

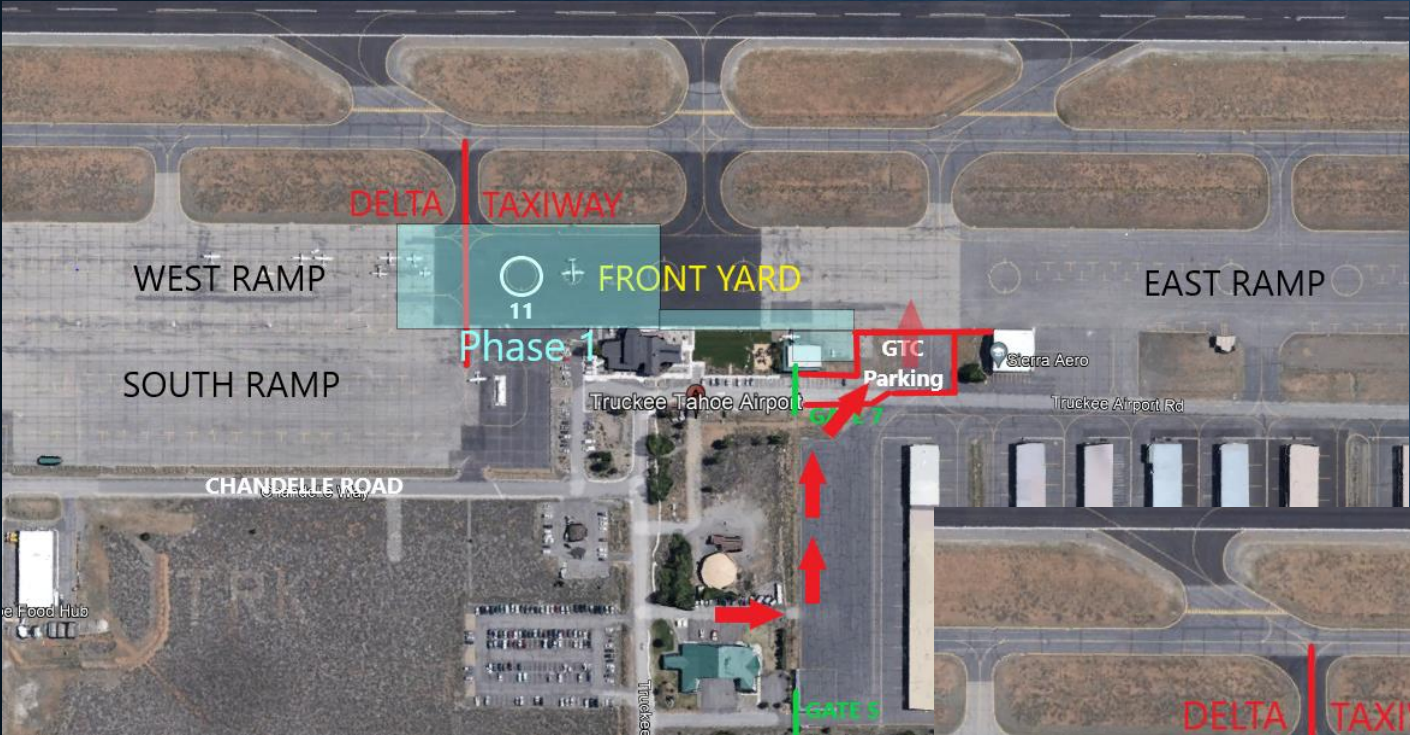


*The slot drain issue....

CONSTRUCTION TRAFFIC / FIREFIGHTING_(NEXT SLIDE)



ARFF ROUTES



AIRCRAFT TRAFFIC FLOW

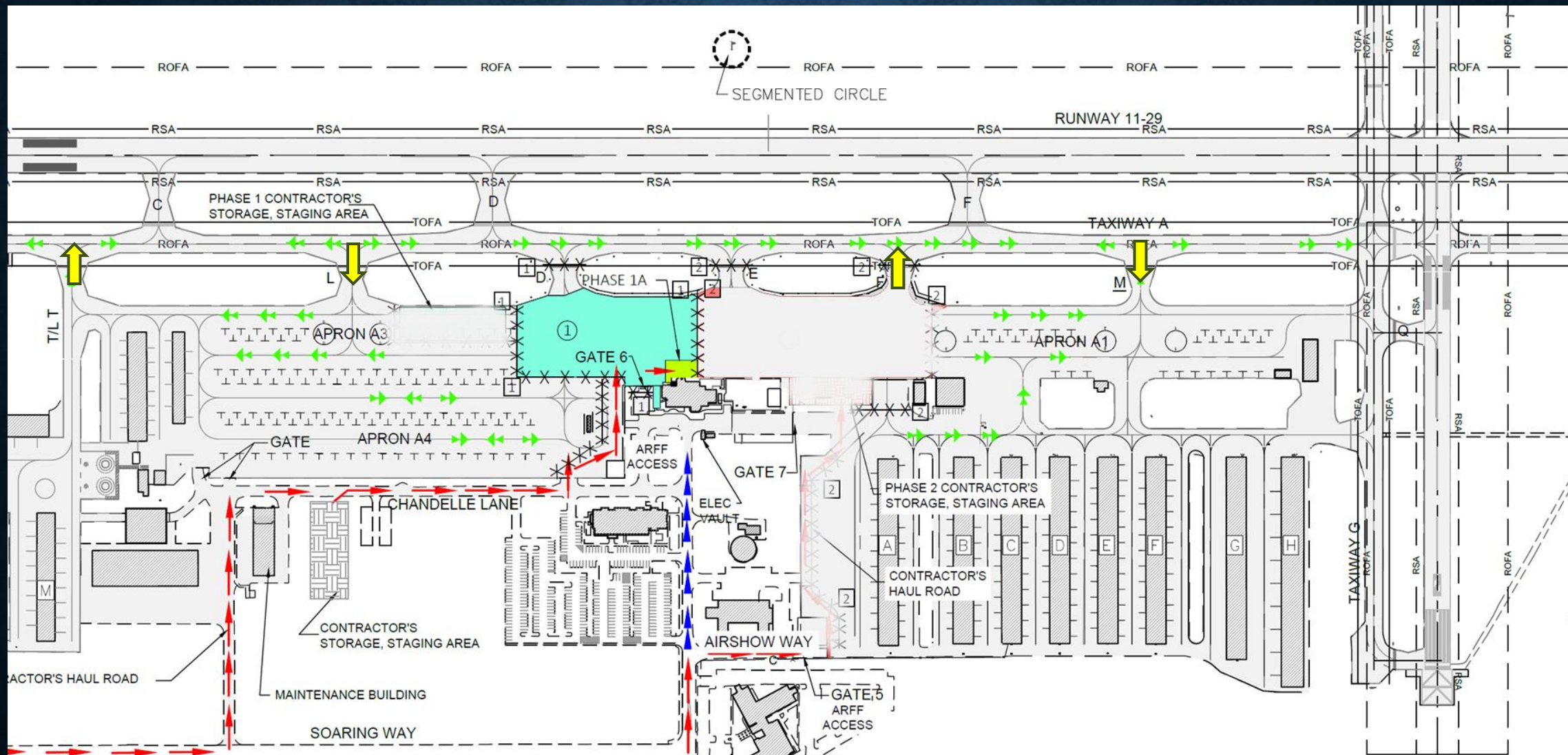
- For tenants Tango and Romeo taxilanes will be unaffected. Mike may become blocked at the South side of the East Ramp if ramp becomes congested.
- Quebec will be affected throughout the reconstruction.
- We will generally not operate our ground support vehicles (Tugs, fuel trucks) on Alpha.
- During high tempo operations Tower may have to queue aircraft in throats or where needed while awaiting parking instructions.

Diagram illustrating the layout of an airport terminal and apron area, showing various gates, taxiways, and storage areas.

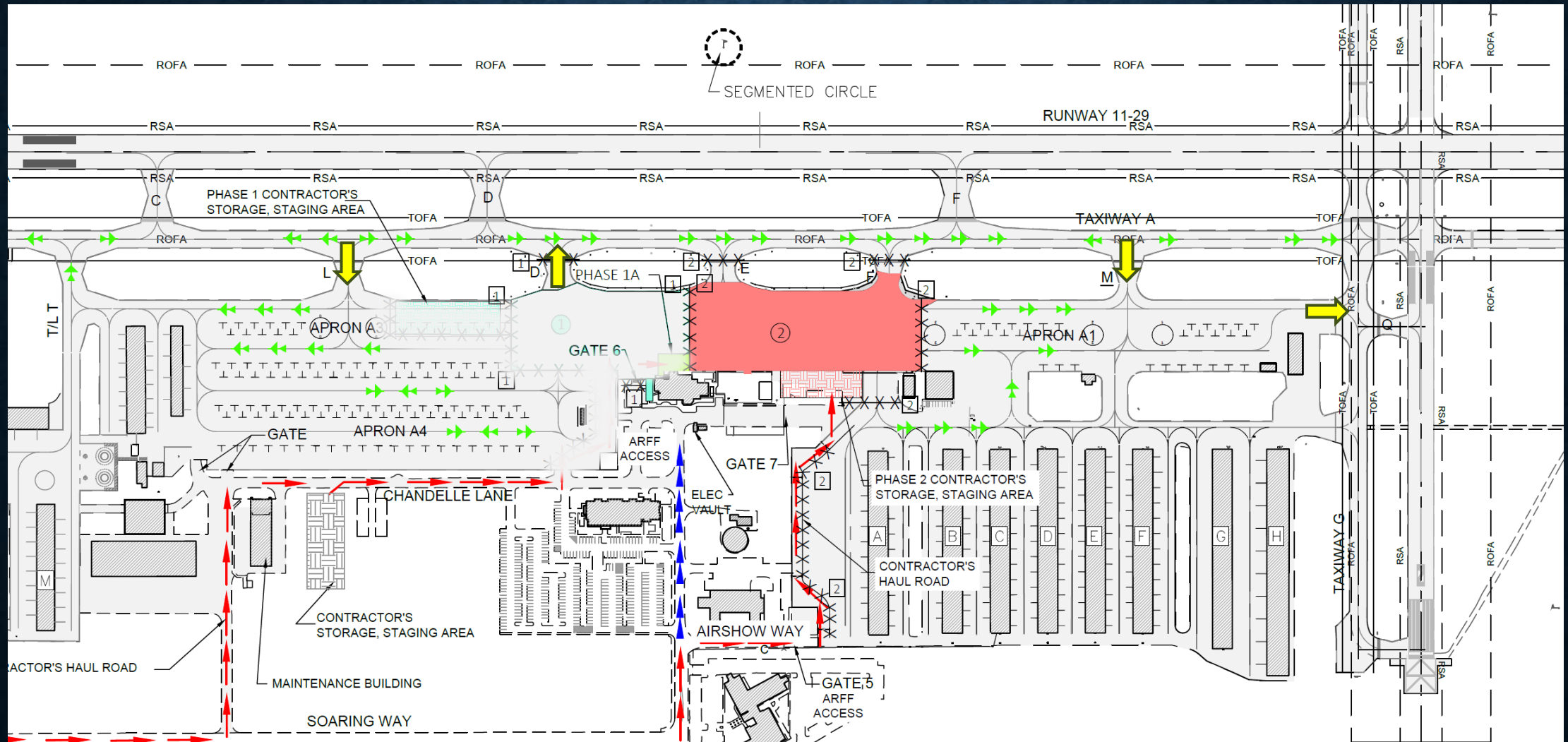
Key features and labels include:

- Runway 11-29** (top)
- Taxiway A** (top right)
- Taxiway G** (bottom right)
- Apron A1** (center right)
- Apron A3** (center left)
- Apron A4** (center left)
- Gate 6** (center left)
- Gate 7** (center right)
- Gate 5** (bottom center)
- Phase 1 Contractor's Storage, Staging Area** (top left)
- Phase 2 Contractor's Storage, Staging Area** (center right)
- Contractor's Haul Road** (bottom left and center right)
- Maintenance Building** (bottom left)
- Soaring Way** (bottom left)
- Chanelle Lane** (center left)
- Airshow Way** (center right)
- Elec Vault** (center right)
- ARFF Access** (center left and bottom center)
- Segmented Circle** (top center)
- Green Arrows** (indicating traffic flow)
- Red Arrows** (indicating specific access routes)
- Blue Arrows** (indicating specific access routes)
- Yellow Arrows** (indicating specific access routes)
- Labels C, D, E, F, M** (top left to top right)
- Labels A, B, C, D, E, F, G, H** (center right)
- Labels M** (bottom left)

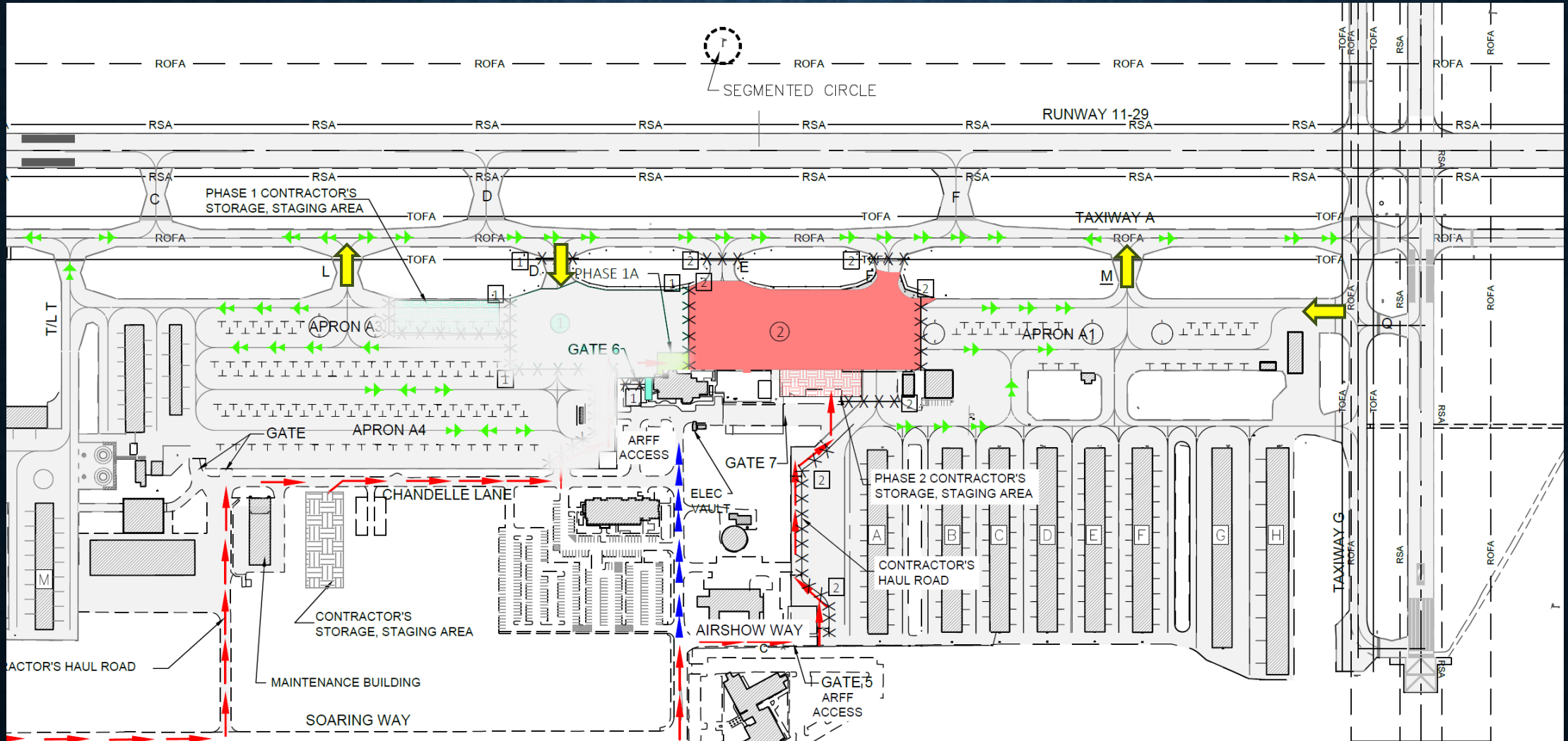
Phase 1 Runway 11 Flow



Phase 2 Runway 29/02/20 Flow



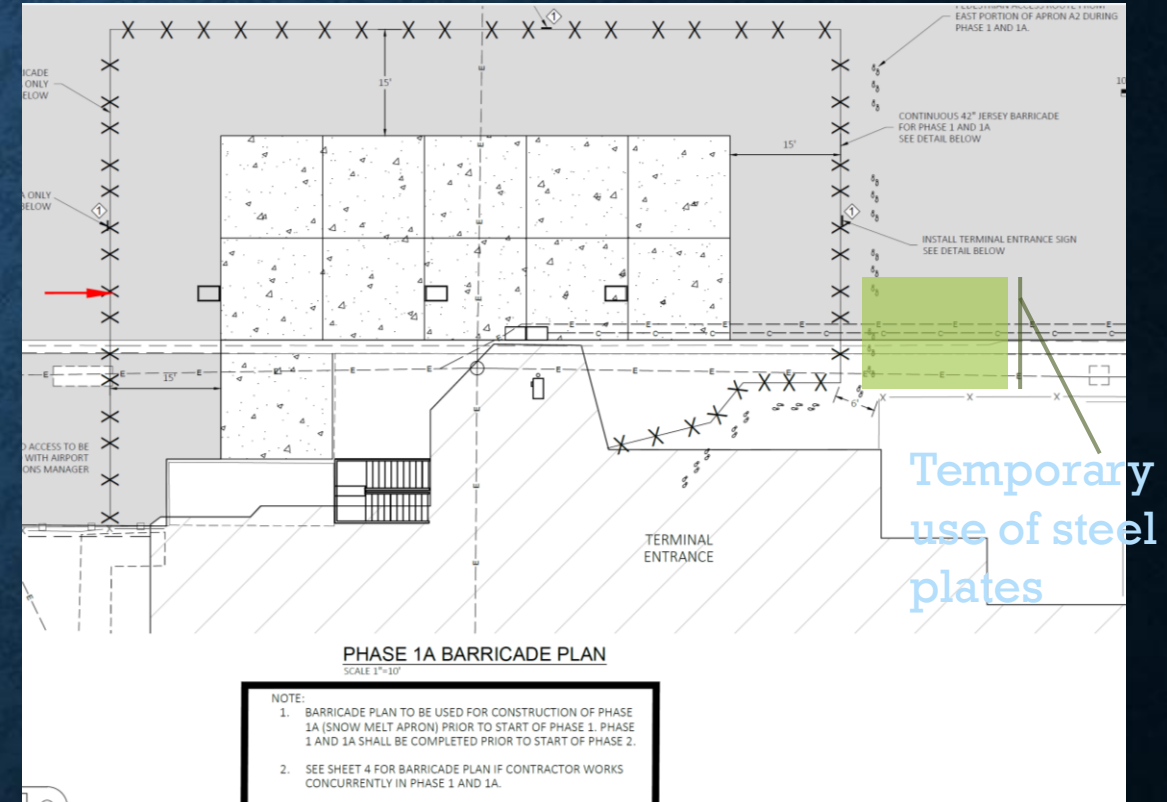
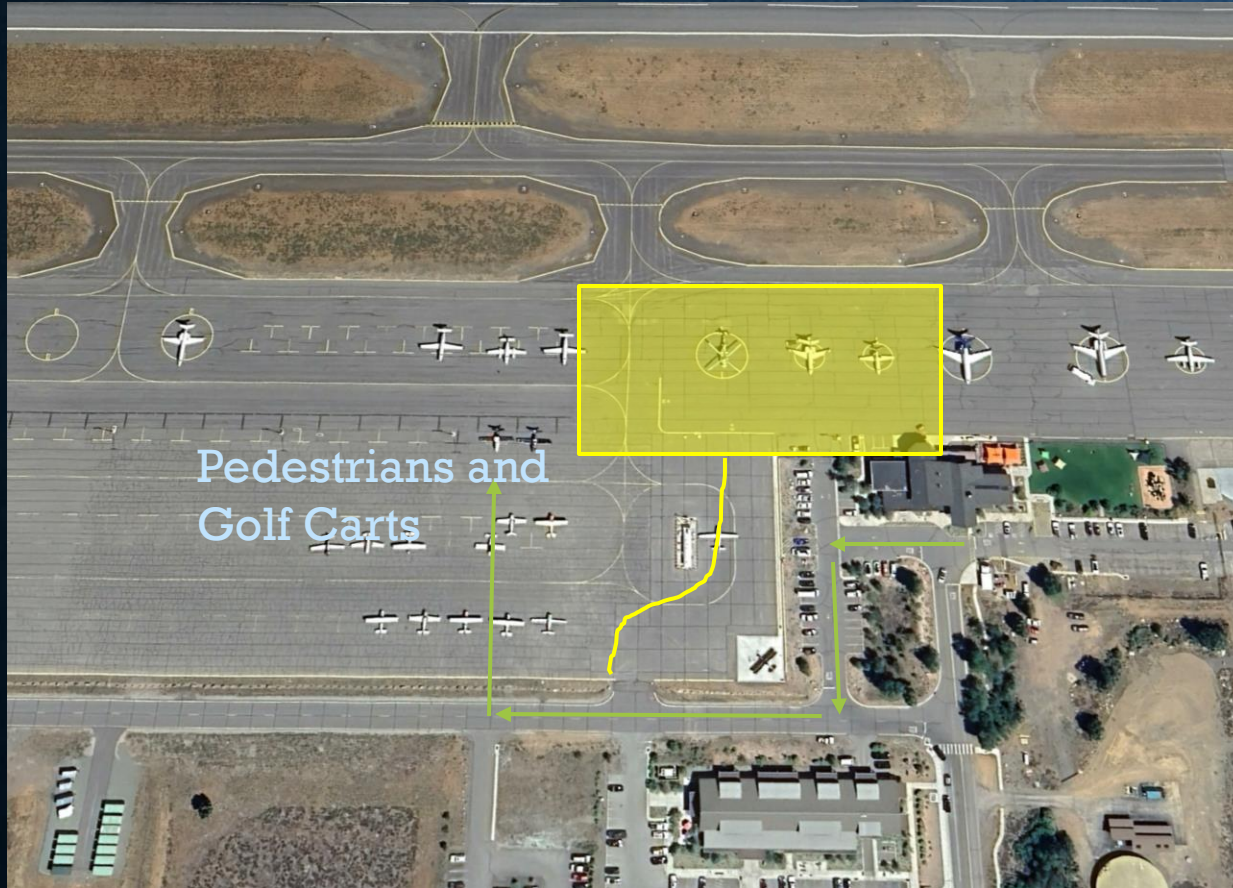
Phase 2 Runway 11 Flow



PEDESTRIAN TRAFFIC PHASE 1

West Side Ramp

East Side Ramp



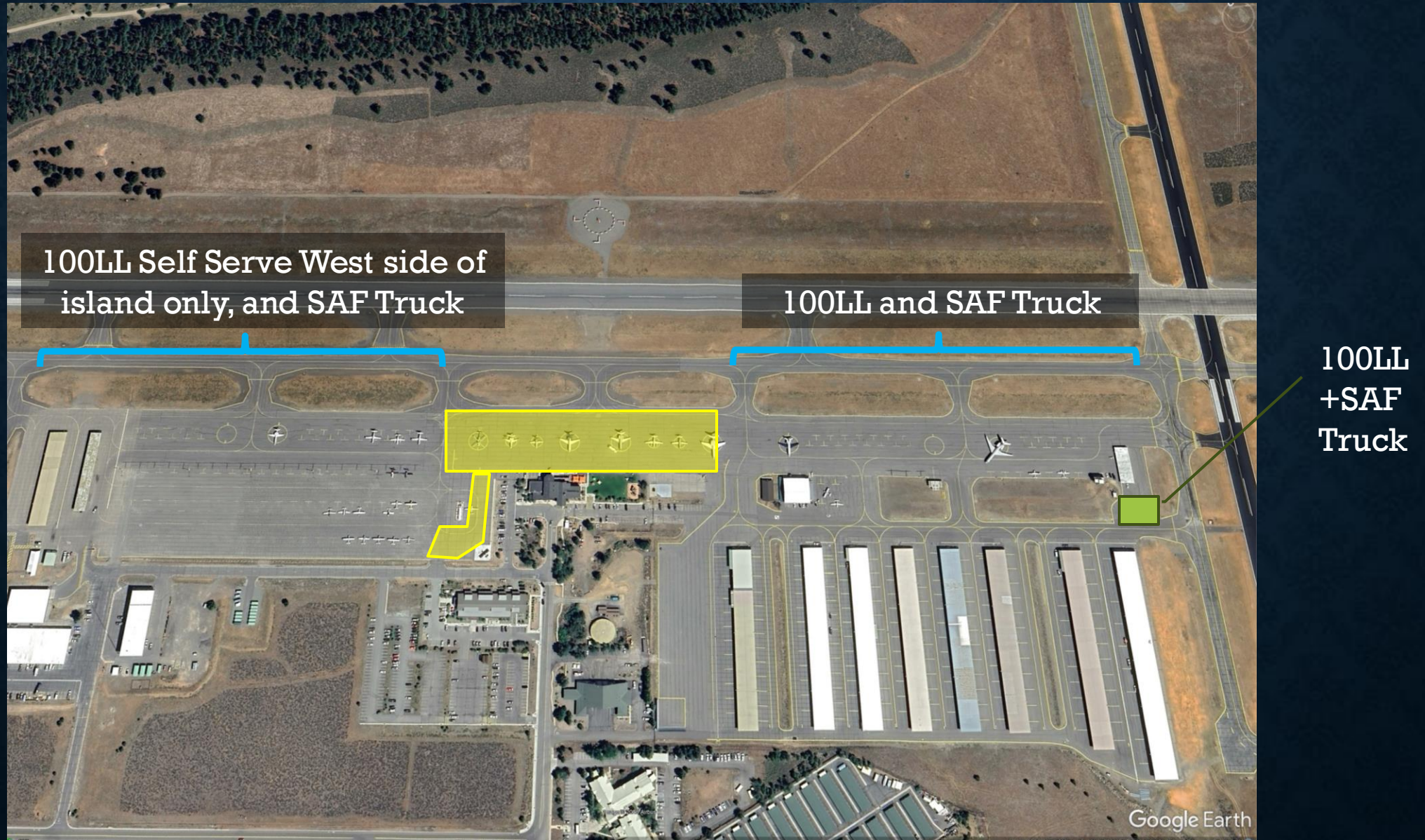
PEDESTRIAN TRAFFIC PHASE 2

West Side Ramp

East Side Ramp



FUELING IMPACTS (PHASE 1 AND 2)



GSE IMPACTS

- Tugs
- EPU's
- Lav Cart

GTC STAGING



F.O.D. AND DEBRIS MANAGEMENT

- Coordinated through Dispatch 122.95 or telephone

TOWER AND CONSTRUCTION COORDINATION, HOTLINES

- Full time construction management by Brandley Engineering
- Operation personnel monitoring
- Report any incidents or problems to:
 - Vincent Wawrzynski 530 608 2028
 - Dispatch 530 587 4119