

# WINTER OPERATIONS MEETINGS

Truckee Tahoe Airport District

November 18, 2020

Connected By  
More Than A Runway

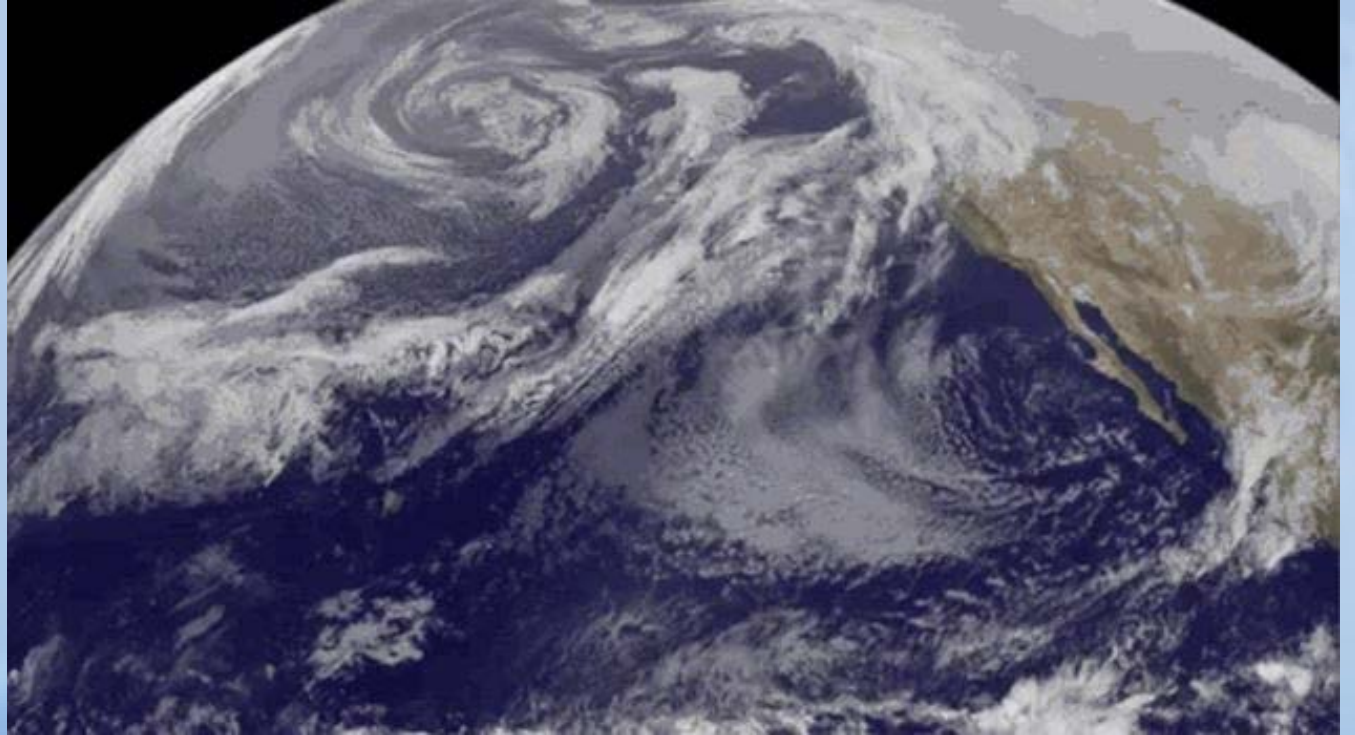


# Introduction



- Winter Ops 5:30-6:30pm
- Goals for the meeting
- We want to hear from you
- What questions do you want answered tonight?

# STORM PREP



- Ready the equipment
- Watch the weather (and watch it again)
- Middle of the night - 3 am snow accumulation checks



# SNOW REMOVAL DETERMINING FACTORS



- Storm duration & forecast, no two storm systems are alike
- Snow amount and type
- Time of season (sunshine factor)
- Snowfall timing (time of day and day of the week)
- Runways 1" / Hangars 4" / Terminal lot 4"

# RESOURCES: MANPOWER



- Scheduling of personnel, on-call staff, 12 hour shifts max
- Experience & capability of personnel
- Availability of qualified operators for equipment
- Why doesn't staff work around the clock?



# New equipment for 2020

- Caterpillar 140 grader with wing
- Larue T85 snowblower





# KTRK Snow removal fleet





# SEQUENCE OF OPERATIONS



- TTAD asphalt surfaces = 4,504,061 sq.ft. or 103.41 acres!
- Public roads, primary parking, business access
- Care Flight and hangar rows L,M,N,P
- Terminal Front yard & businesses (Hgr 1 & Tower)
- Runway access ingress/egress, full wing tip clearances
- Runways and taxiways
- Hangar rows (requests emailed to: [snowday@truckeetahoeairport.com](mailto:snowday@truckeetahoeairport.com))
- Secondary taxiways, fire hydrants, transformers, ramping
- Final clean up can take up to 5-7 days post storm event





## Runway Closures & NOTAM's

- Duration of runway closures an estimate
- Parallel taxiways & ramp parking affect RWY closures
- NOTAM's may need to be extended

# NOTAMS CANCELED, AIRPORT OPEN FOR BUSINESS



- Affect upon manpower when airfield open
- UNICOM Operator & POS
- Parking, fueling, and additional ramp services



# HANGARS -

What does it take to clear a hangar row?



- Technical and methodical approaches to snow and ice removal takes time
- Wind row, between hangars along trench drain
- Each hangar row requires several machine hours to clear

# TENANT RESPONSIBILITIES & SAFETY

- Plan in advance
- Minimize calls to UNICOM/Dispatch
- Have reasonable expectations
- Check NOTAMS & the TTAD website 360 degree cam
- Importance of shoveling below hangar doors (have a snow shovel or blower available)
- Never close hangar door on top of snow
- **Stay away from equipment (people, autos, dogs)**  
**Never approach from behind (blind spots)**
- Drive slowly and safely, watch for equipment around blind corners
- Keep hangar rows clear of parked vehicles





# AVCOM ROLE IN DAILY WINTER OPERATIONS



- We work with the tower daily - on Safety, Operational, & Community initiatives
- We are responsible for Flight Safety
- We are responsible for all essential, emergency and routine communications
- We measure operations, enforce curfews and develop data

# CHALLENGES WITH COMMUNICATION

- We are out & about on the airfield
- There is redundancy, can help or confuse the issues
- A NOTAM is the ruling information and are updated regularly. Visit: <https://pilotweb.nas.faa.gov/PilotWeb>
- TruckeeTahoeAirport.com/Aviation Information/  
Snow Day - is a great resource to check on the status of snow clearing efforts on the airfield (updated routinely)



# MEETING YOUR NEEDS!

- Email us at: [snowday@truckeetahoeairport.com](mailto:snowday@truckeetahoeairport.com)
- Tell us your needs, desired departure or arrival time
- Check on current airport conditions using the website at: [TruckeeTahoeAirport.com](http://TruckeeTahoeAirport.com)  
Visit the 360-degree webcam and/or Aviation Information/Snow Day
- Please email us at snowday email. This is distributed to the key players to help you gain access. We cannot facilitate phone calls, texts.



Thank you for attending our Winter Operations meeting, we appreciate your time.

We hope you are leaving with a better understanding of the Airport District's overall winter operations plan, and that all your questions and concerns have been answered.

Have a safe and enjoyable winter.

Your Airport Board of Directors and Staff.

Connected By  
More Than A Runway

