

PILOTS & PASSENGERS

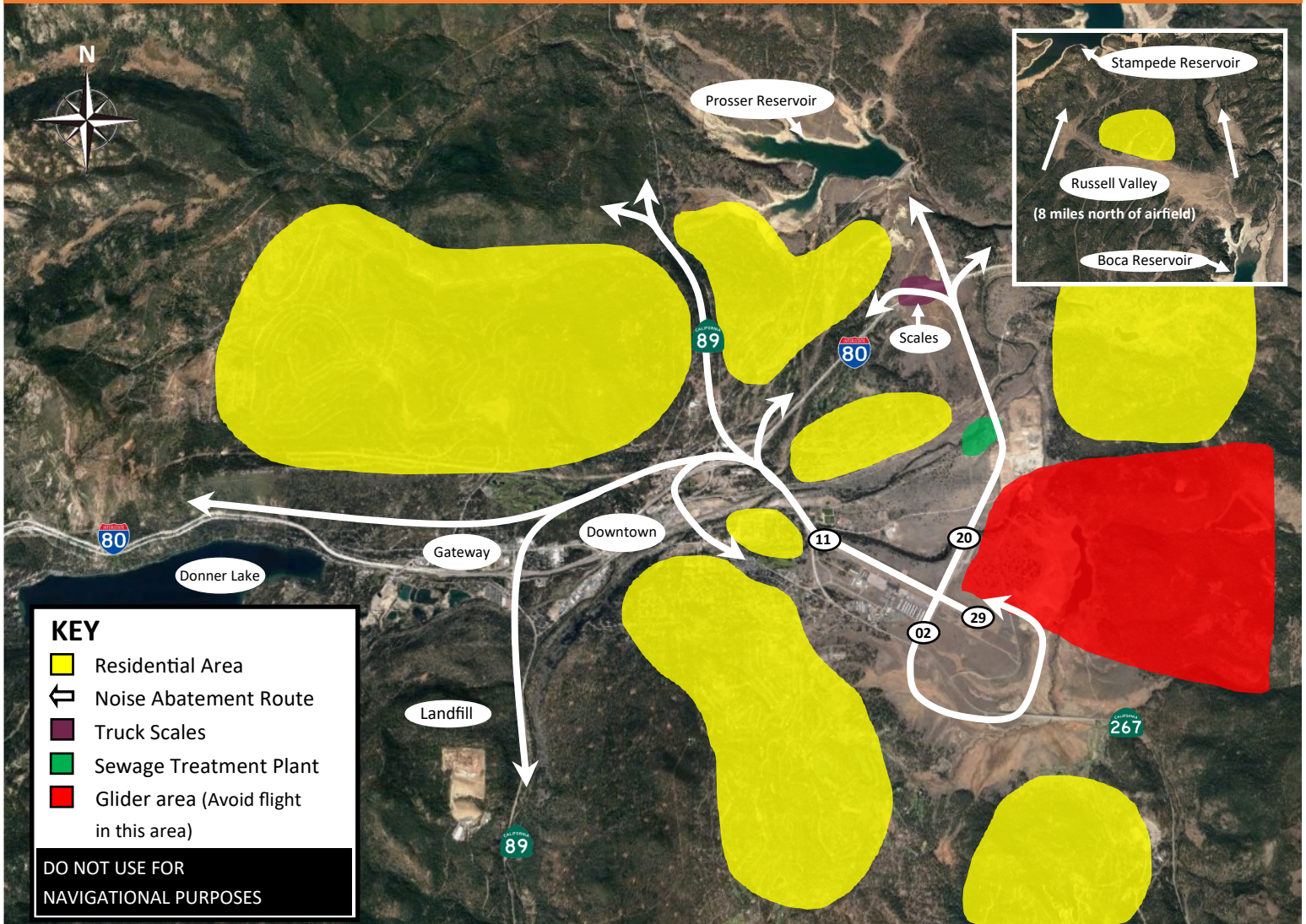
KTRK

IMPORTANT FLIGHT INFORMATION

Truckee Tahoe Airport

Version 8

January 2023



- The Truckee area is noise sensitive at all times
- Avoid residential areas. Overfly roadways
- Noise abatement procedures in effect
- Voluntary curfew in effect 10 pm—7 am
- Bypass Departure—straight out **past 11 Runup** then slight right turn to overfly bridge
- Left traffic for all runways except 20
- Touch & Go's—please alternate runways every three laps, weather and traffic permitting
- Special Hazards: high terrain, wind shear, density altitude, wildlife
- Preferred calm wind runway is 02
- Runway 02 Departure—Runway heading until abeam Sewage Treatment Plant, then left to Truck Scales

D-ATIS: 118.0

GROUND: 118.3

TOWER/CTAF: 120.575

UNICOM/FBO: 122.95

OAK CTR: 127.95



Field Elevation 5,901

Call for up to the minute data: 530-587-4119 x 100

For more information on noise abatement: <https://truckeetahoeairport.com/aviation/procedures>

Webcam: <https://truckeetahoeairport.com/webcam>