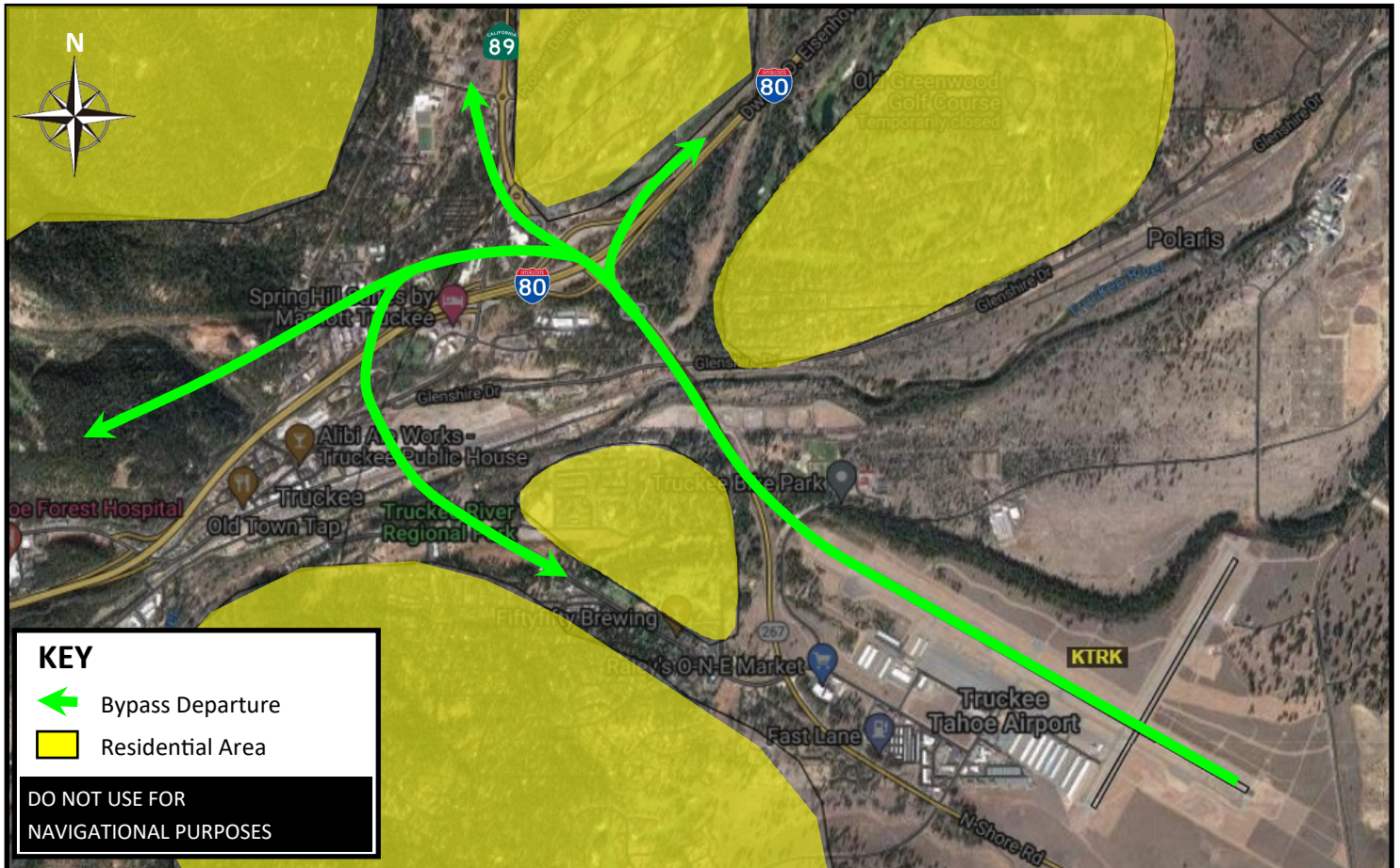


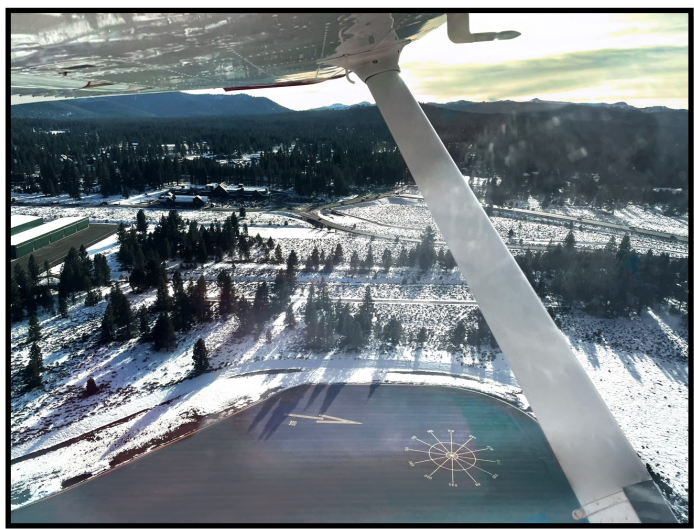
Runway 29 Bypass Departure

Fly runway heading until **just past the end of the runway**, then make a slight right turn. This will align you with the Highway 267 Bypass Bridge. Fly along this bridge until reaching Interstate 80 then on course, staying near roadways until out of town.



For a successful Bypass Departure please consider the following

- Fly runway heading longer than you think. Turning before the end of the runway will result in overflight of a residential area
- To identify the end of the runway, look for Runway 11 Runup off your left and make slight right turn **shortly after**
- After turning, lower nose briefly to verify your position
- If you can see the bridge off your left, you are not over it



Runway 11 Runup with navigational markings