

# PILOTS & PASSENGERS

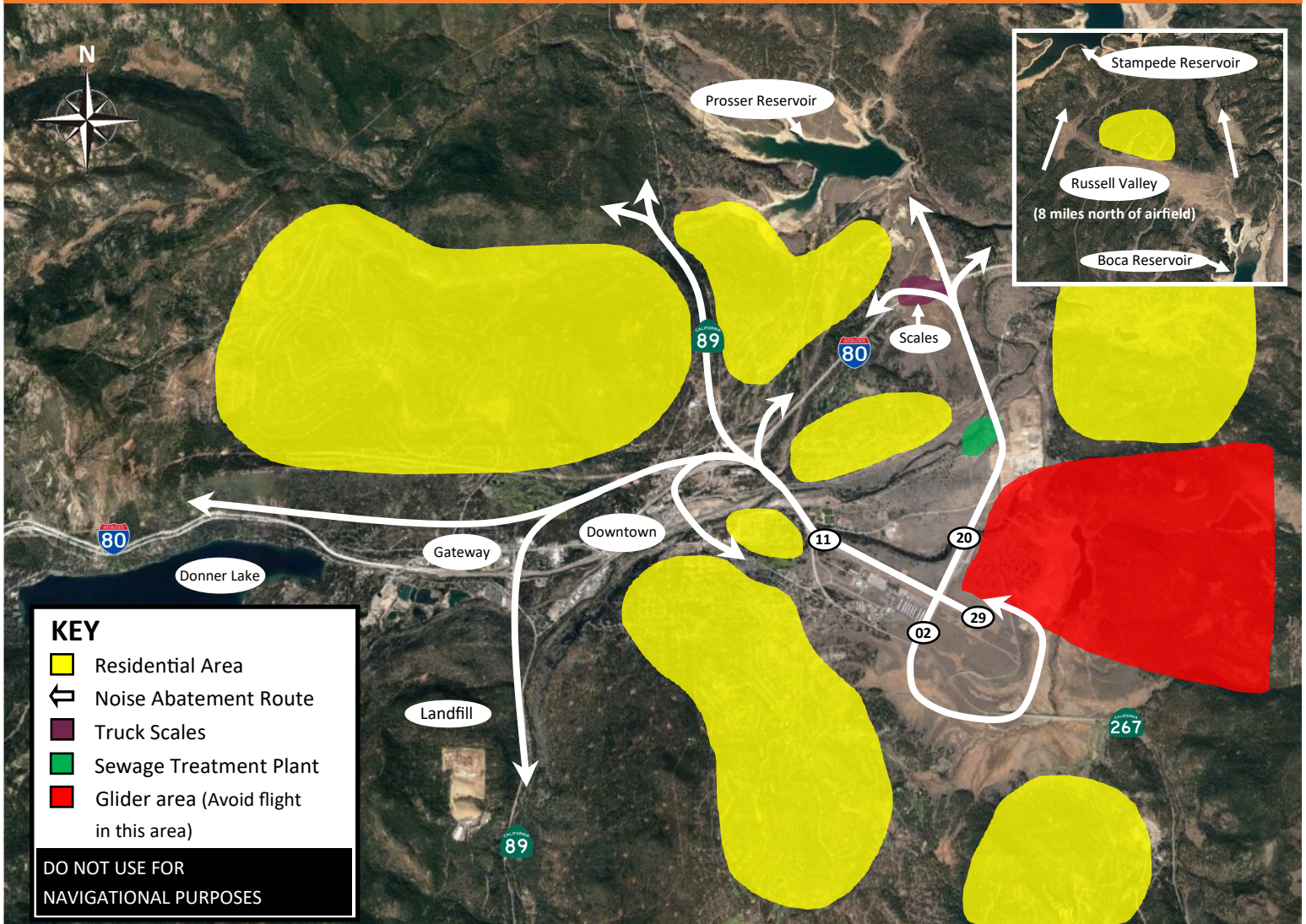
KTRK

## IMPORTANT FLIGHT INFORMATION

Truckee Tahoe Airport

Version 8

January 2023



- The Truckee area is noise sensitive at all times
- Avoid residential areas. Overfly roadways
- Noise abatement procedures in effect
- Voluntary curfew in effect 10 pm—7 am
- Bypass Departure—straight out **past 11 Runup** then slight right turn to overfly bridge
- Left traffic for all runways except 20

- Touch & Go's—please alternate runways every three laps, weather and traffic permitting
- Special Hazards: high terrain, wind shear, density altitude, wildlife
- Preferred calm wind runway is 02
- Runway 02 Departure—Runway heading until abeam Sewage Treatment Plant, then left to Truck Scales

D-ATIS: 118.0

GROUND: 118.3

TOWER/CTAF: 120.575

UNICOM/FBO: 122.95

OAK CTR: 127.95



Field Elevation 5,901

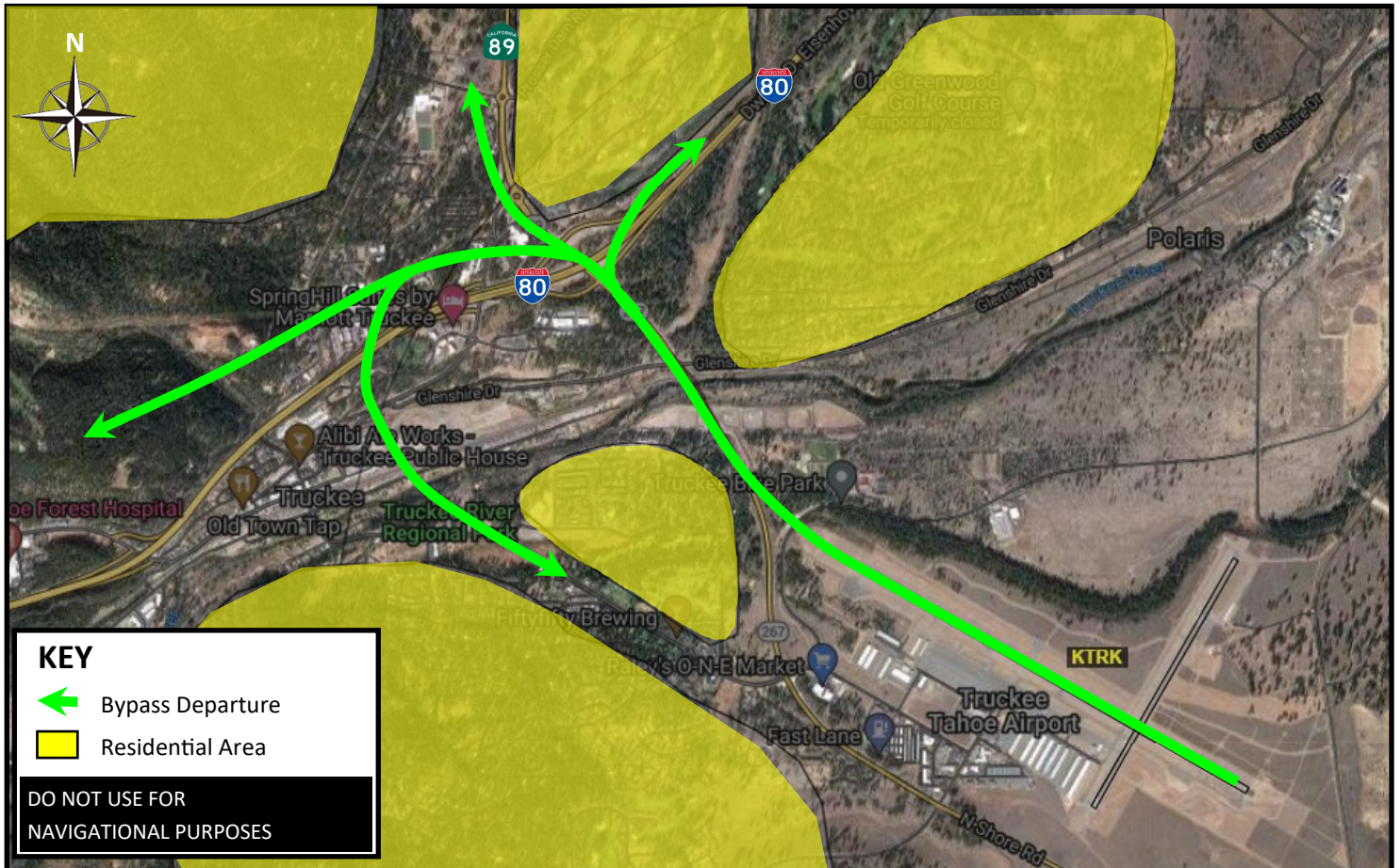
Call for up to the minute data: 530-587-4119 x 100

For more information visit: <https://pilots.truckeetahoeairport.com>

Webcam: <https://truckeetahoeairport.com/webcam>

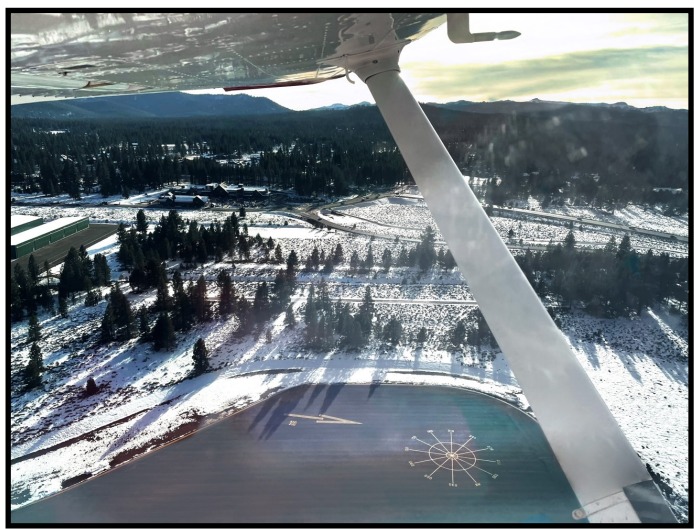
# Runway 29 Bypass Departure

Fly runway heading until **just past the end of the runway**, then make a slight right turn. This will align you with the Highway 267 Bypass Bridge. Fly along this bridge until reaching Interstate 80 then on course, staying near roadways until out of town.



## For a successful Bypass Departure please consider the following

- Fly runway heading longer than you think. Turning before the end of the runway will result in overflight of a residential area
- To identify the end of the runway, look for Runway 11 Runup off your left and make slight right turn **shortly after**
- After turning, lower nose briefly to verify your position
- If you can see the bridge off your left, you are not over it



Runway 11 Runup with navigational markings

# Runway 2 Scales Departure

- Runway 2 is the preferred departure for noise and offers the most options in the event of a loss of power.
- For a successful departure please fly runway heading until **abeam** Sewage Treatment Plant, then left to Truck Scales. Turning before Sewage Treatment plant results in overflight of homes. Flying straight out to the freeway will also result in overflight of homes.

