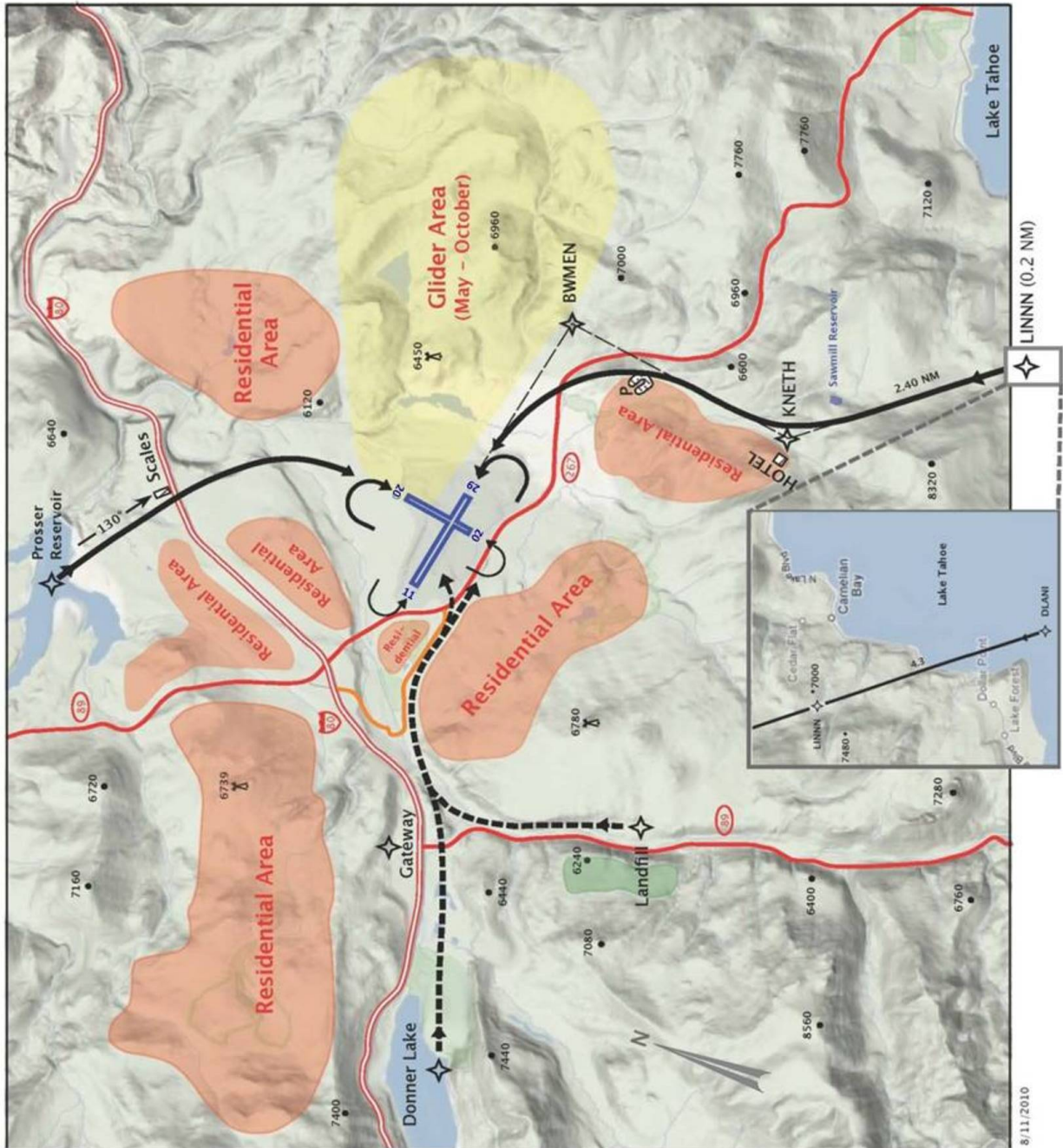


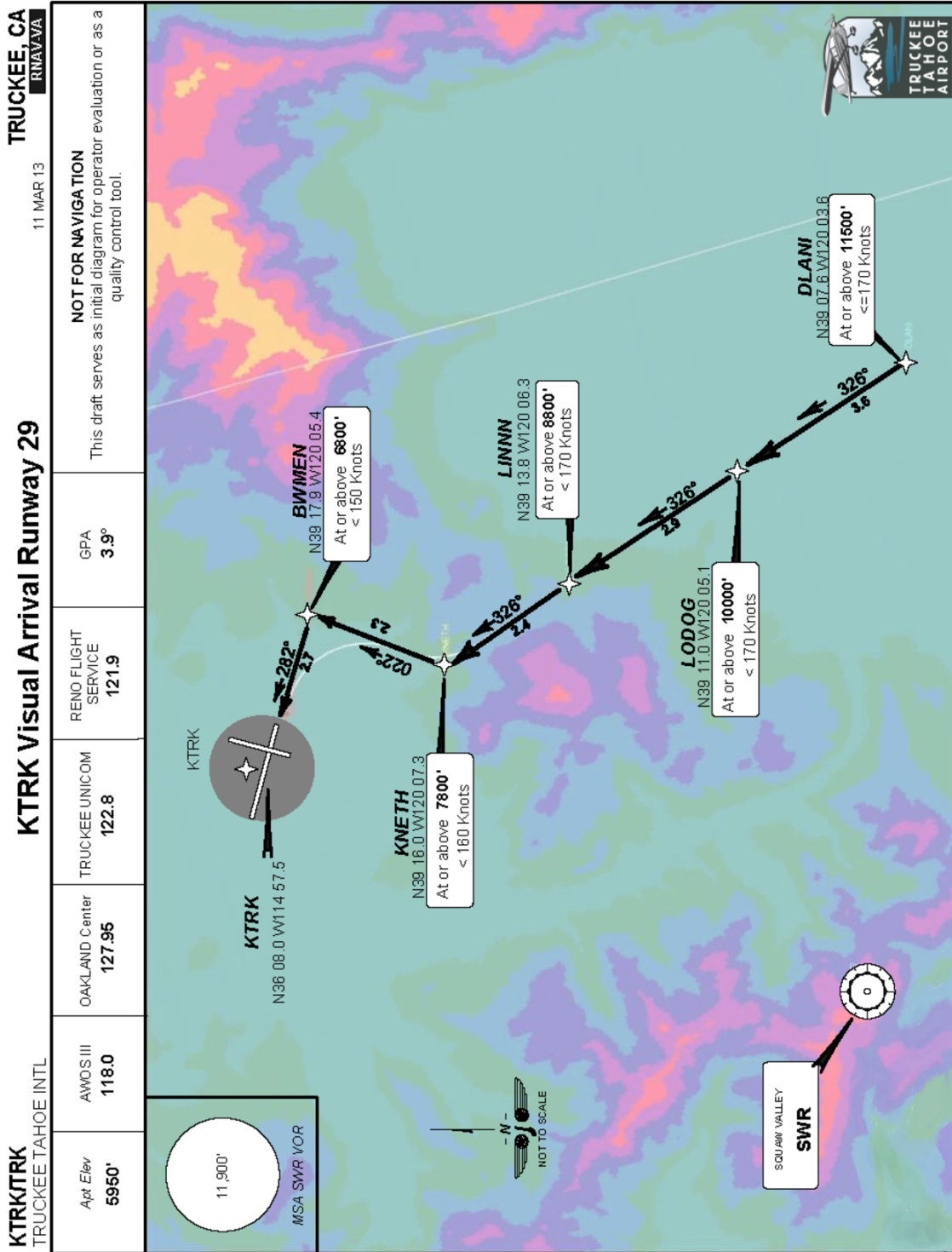
**Diagram #1: Truckee Tahoe Airport Noise Abatement Arrival Procedures**  
All Aircraft Categories / All Runways





**Diagram #3: Visual Arrival**

Aircraft Categories: A, B, C, D & E / Runway 29



**KTRK****Truckee Tahoe Airport**  
Truckee, California, United StatesNoise  
Sensitivity  
Level:**HIGH****OVERVIEW**

The Truckee Tahoe Airport District and the citizens of the Truckee Tahoe community welcome you to our area. In order to be a good neighbor, the Airport and the community request that you follow these recommended noise abatement procedures, subject to weather, equipment and pilot capabilities. Please do not fly over residential areas and follow recommended arrival and departure flight paths depicted in the "Images / Diagrams" section below.

AS ALWAYS, FLIGHT SAFETY MUST SUPERSEDE RECOMMENDED NOISE ABATEMENT PROCEDURES.

**TEMPORARY INFORMATION**

Parallel, Ramp, and Hangar Row Reconstruction July, August, Sept 2015

**CURFEWS****All Runways**

Truckee has a voluntary curfew between 10:00pm and 07:00am. Please do not arrive or depart between these hours. Thank you.

**ARRIVALS****Aircraft Categories: A, B, C, D & HELI / All Runways**

Prosser Reservoir Arrival

N 39.19.18 W 120.15.25

Initial heading 130 to Interstate 80. Straight in rwy 20 or fly overhead and join appropriate downwind for other runway.

**Aircraft Categories: A, B & HELI / Runways: 20 & 29**

Donner Lake Arrival

N 39.17.32 W 120.09.13

Enter downwind for rwy 29 along hwy 267 or right downwind for rwy 20.

[Video Link](https://vimeo.com/84734680) - Rwy 29 ARRIVAL from the west over Donner Lake

**Aircraft Categories: A, B & HELI / Runways: 20 & 29**

Landfill Arrival

N 39.22.87 W 120.09.13

Enter extended downwind for rwy 29 along hwy 267 or right downwind for rwy 20.

**Aircraft Categories: A, B, C, D & HELI / Runway 29**

Lake Tahoe Visual Arrival

3.9 deg descent angle

Cross DLANI at/above 10,500 MSL.

LINNN >8,800

KNETH >7,800

BWMEN direct to rwy 29

CAUTION: Start turn to final abeam Northstar parking lots.

**DEPARTURES****Aircraft Categories: A, B, C & HELI / Runway 02**

Prosser Reservoir

N 39.19.18 W 120.15.25

Please no turns to the west before 3.5 NM from TRK.

**Aircraft Categories: A, B, C & D / Runway 29**

Rwy 29 Departures

Heading to 300 at end of rwy abeam hangars. Fly to Interstate 80 before turns on course.

[Video Link](https://vimeo.com/96939397) - Rwy 29 DEPARTURE to the west over Donner Lake

**Aircraft Categories: A, B, C & HELI / Runway 02**

Please use rwy 02 for calm wind departures during mornings and evenings.

**Aircraft Categories: A, B, C & HELI / Runway 20**

Rwy 20 Departure

Left 270 overhead airport. Follow departure for rwy 29.