

TRUCKEE TAHOE AIRPORT DISTRICT



TRUCKEE TAHOE AIRPORT
Community Partner

TTAD was formed in 1958 to serve a common community interest:
Build a modern airport to support a thriving community.

THE AIRPORT IS A SPECIAL DISTRICT OF CALIFORNIA WHICH MEANS IT IS...

A local, focused form of government lead by a five member elected Board of Directors that provides services and facilities

Truckee Tahoe Airport District Geographic Boundary



TRUCKEE TAHOE AIRPORT DISTRICT

COUNTY LINE

ELEVATION:

5,901 ft MSL



POPULATION SERVED:

30,000 full-time residents and 60,000 peak period visitors



SIZE: The District includes

485

SQUARE MILES

AVIATION:

KTRK provides service to private and charter aircraft but no scheduled commercial flights.



The Truckee Donner Chamber of Commerce presented the airport with the 2015 *Excellence in Government* award.

2015 NON-PROFIT PARTNERSHIPS:

Alder Creek Middle School Graduation
Association of California Airports
Big Brothers Big Sisters
Biking for a Better World
Disabled Sports USA Far West
Family Resource Center of Truckee
InnerRhythms
Kid Zone Museum
Mission to Mars – Civil Air Patrol
Placer Co. Search & Rescue
Positively Rolling
Sierra Expeditionary Learning Academy
Sierra Nevada Dance
Sierra State Parks Foundation
Truckee High School Football
Truckee High School Wrestling
Tahoe Truckee Unified School District Wellness Program

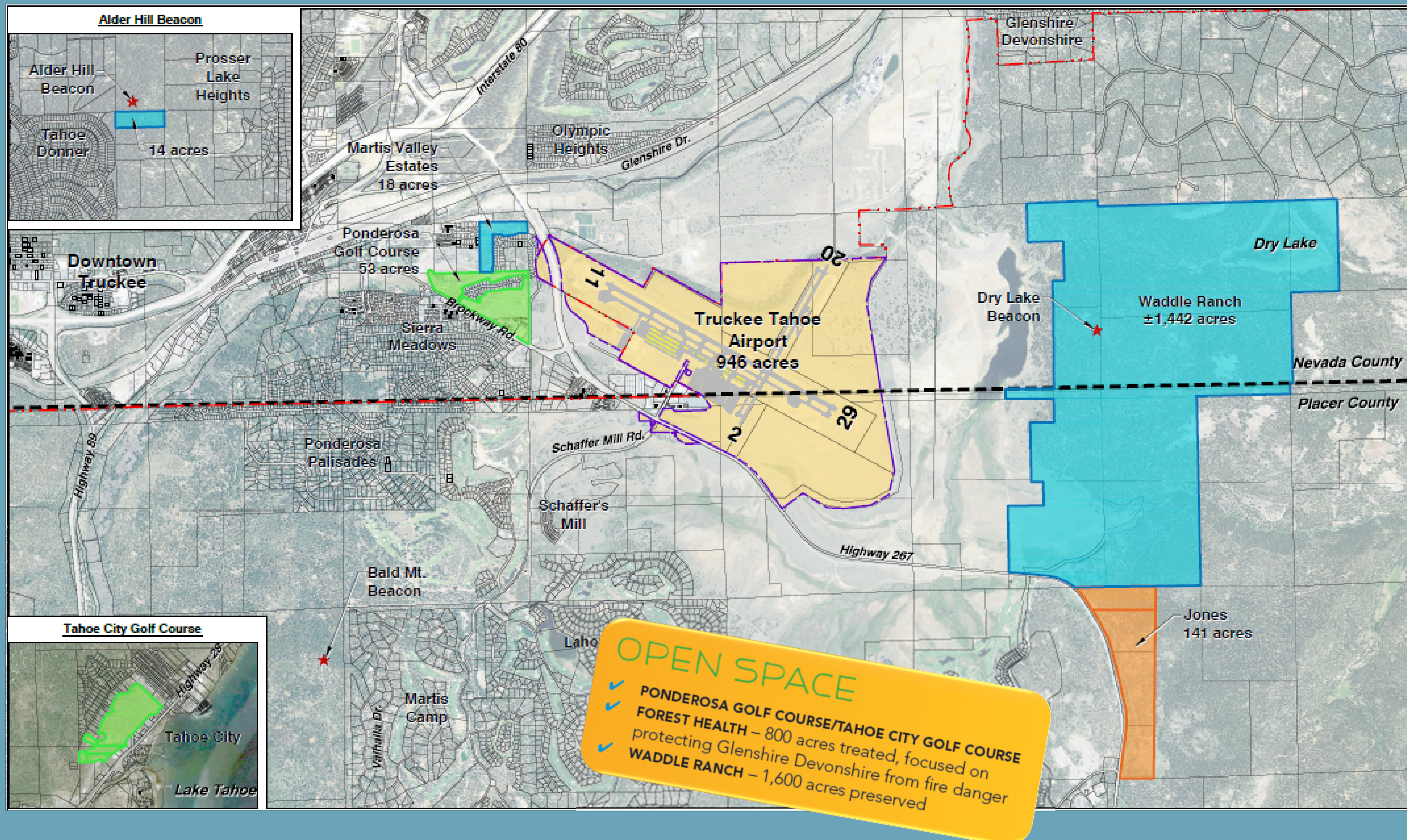
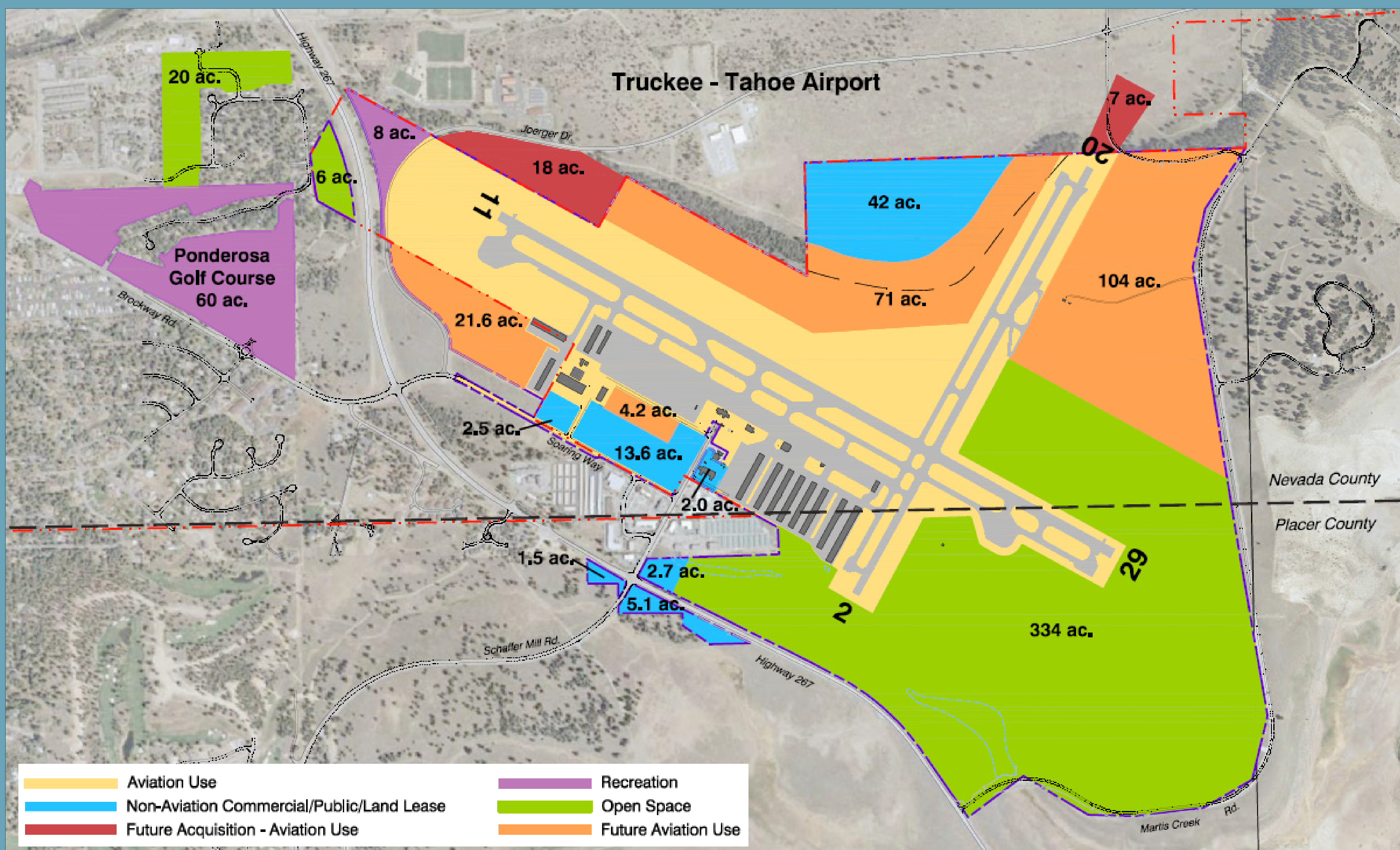
Truckee Baseball Foundation
Truckee Donner Chamber of Commerce – 4th of July
Truckee Donner Recreation and Park Department – 4th of July
Truckee Donner Recreation and Park Department – Ballfield Sponsorship
Truckee Downtown Merchants Association – Truckee Thursdays
Truckee High School
Truckee High School Grad Project
Truckee High School Softball
Truckee Little League
Truckee Rodeo Association
Truckee Tahoe Community Foundation
West Shore Association – Splash In

Over **300** non-profits used the airport for events + meetings in 2015.

TTAD PROPERTY



**TRUCKEE
TAHOE
AIRPORT**
Community Partner



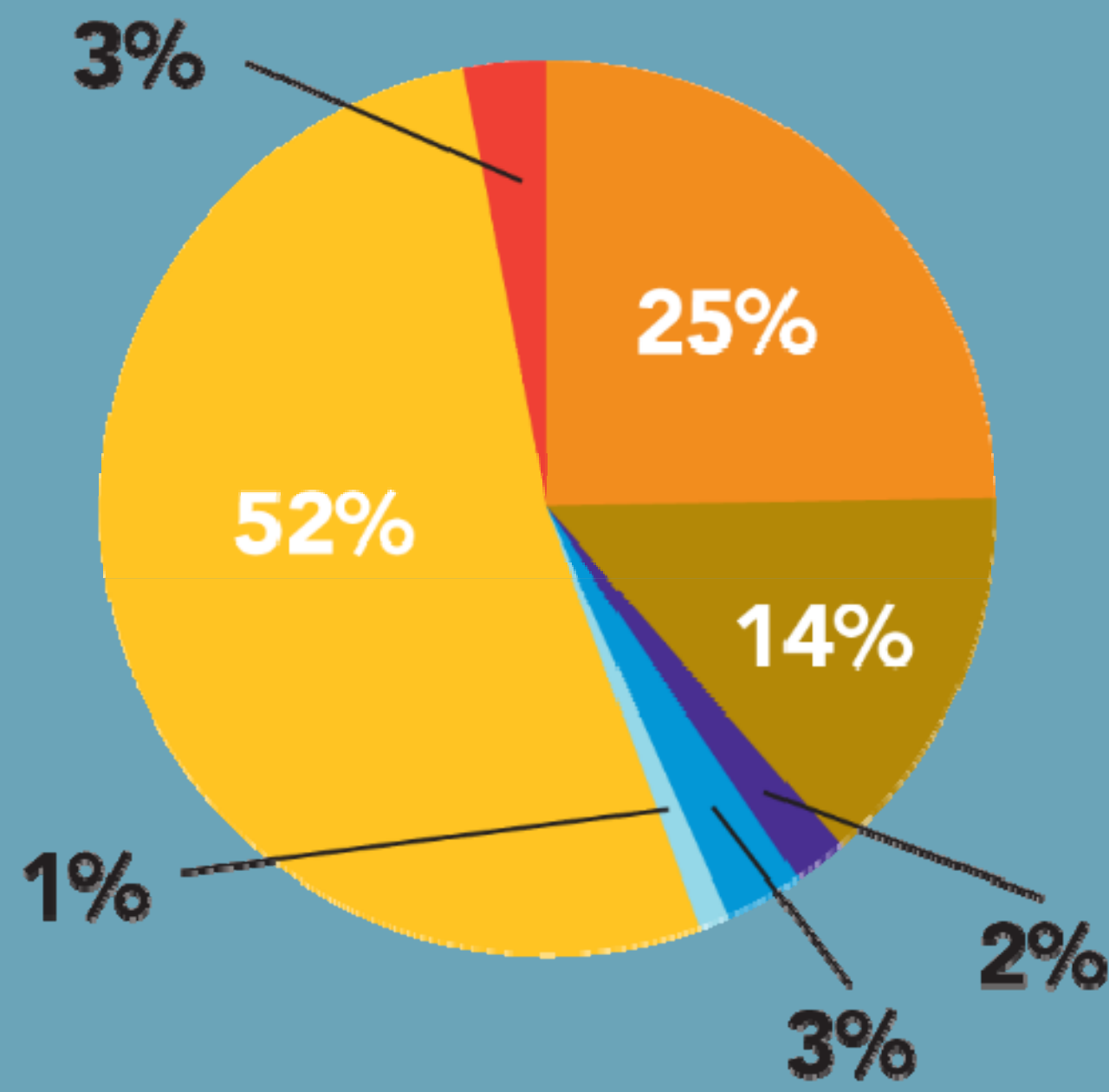
Learn more at www.truckeetahoeairport.com

2014/15 FINANCIAL FACTS

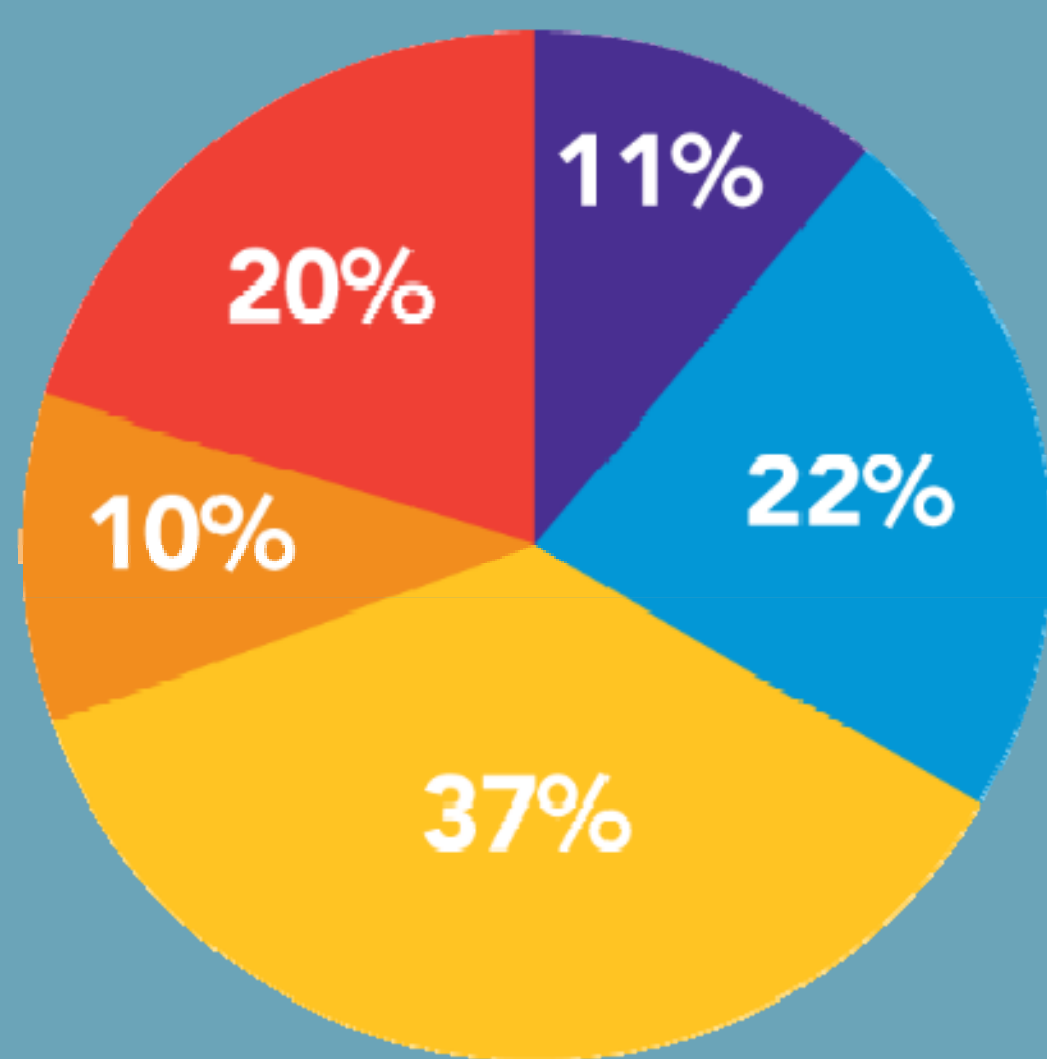


**TRUCKEE
TAHOE
AIRPORT**
Community Partner

Income



Airside Operating Revenue	\$2,354,024
Hangar Rental Income	\$1,333,365
Other Business Leasing Income	\$187,915
Warehouse Space Rental Income	\$283,822
Interest & Other	\$52,263
Property Taxes by County:	
Nevada County	\$1,628,641
Placer County	\$3,400,684
Federal Grants	\$301,124
TOTAL	\$9,541,838



Expenses

Cost of Goods Sold (Fuel etc.)	\$1,073,493
Payroll, Benefits	\$2,128,020
Operating, General & Administrative	\$3,504,230
Repairs & Maintenance	\$965,934
Depreciation	\$1,942,895
TOTAL	\$9,614,572

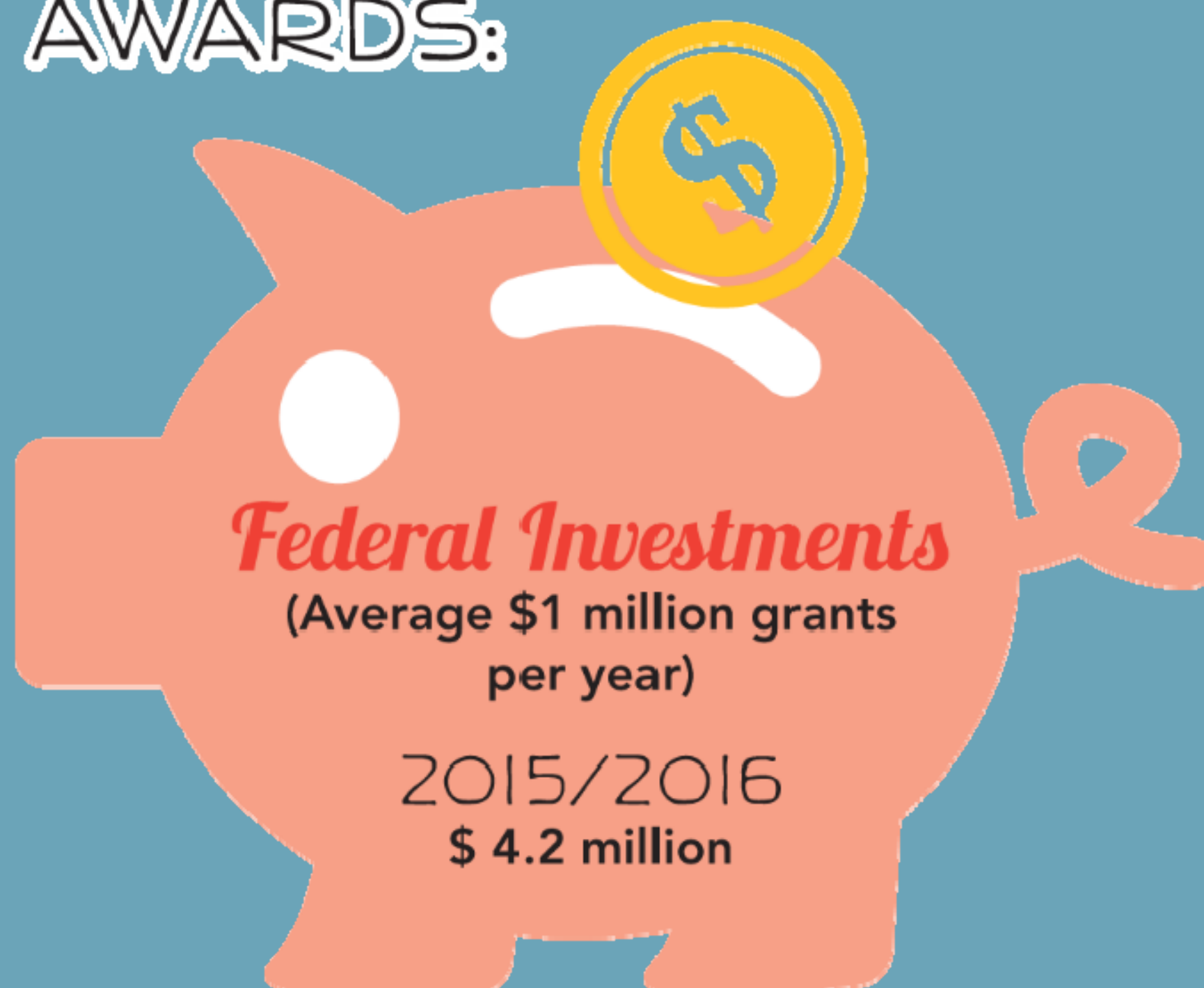
Cost to Homeowners

\$28 per
100K per year
(PER COUNTY ASSESSED VALUE)

AVERAGE \$89 PER HOUSEHOLD



FAA
GRANT
AWARDS:



2015 Airshow

12,000 ATTENDEES
\$137,846 COST
\$40,000 RAISED FOR LOCAL YOUTH



In May of 2015, the Truckee Tahoe Airport District received the *District Transparency Certificate of Excellence* from the California Special Districts Association in recognition of its efforts to promote transparency and governance.

AVIATION ROLE



TRUCKEE
TAHOE
AIRPORT
Community Partner

The airport is an important regional general aviation facility serving the greater Truckee and Lake Tahoe area. The airport is a vital transportation link for residents, visitors and businesses, and provides critical air access for emergency, fire patrol and government services.

Here are a few highlights:



The airport is used primarily for recreational flying by flying enthusiasts and those desiring access to local scenic venues, tourist attractions and other recreational activities.



Commercial operators provide on-demand (non-scheduled) air taxi and charter services to Truckee Tahoe area residents, visitors and businesses.



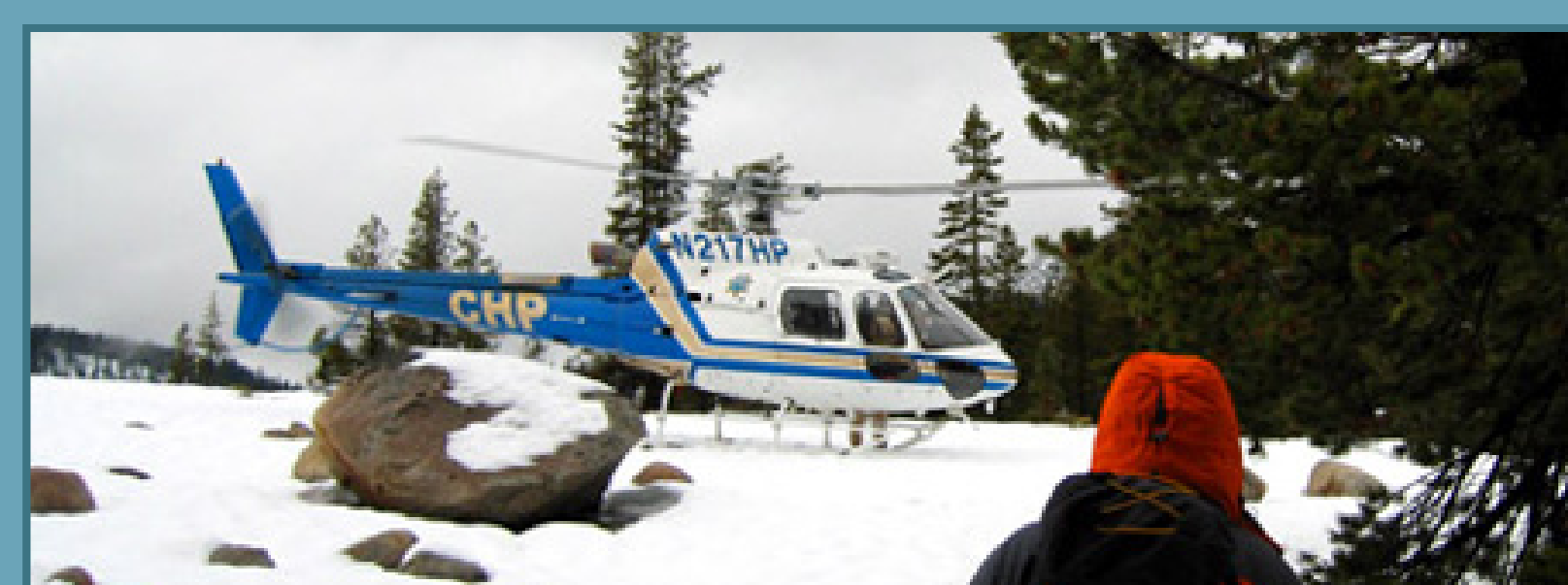
The airport is home to several aviation businesses such as Sierra Aero and Soar Truckee



The airport is used by California Department of Forestry and Fire Protection aircraft during fire spotting patrols after thunderstorms and for suppression of wildland fires.



Care Flight is based at the airport and provides air ambulance and search and rescue services to the community (750 operations).



The airport is used by law enforcement aircraft during local patrols and search and rescue missions.

Emergency services rated most important. – 2009 Godbe Survey.

AVIATION ACTIVITIES



**TRUCKEE
TAHOE
AIRPORT**
Community Partner

The airport employs 22 people to operate and administer airport-related programs and services. Here are a few highlights:



Maintain and operate landside facilities including the administration building, aircraft storage and maintenance hangars, warehouses, aircraft parking apron, long-term parking, and aviation fueling and washing facilities.



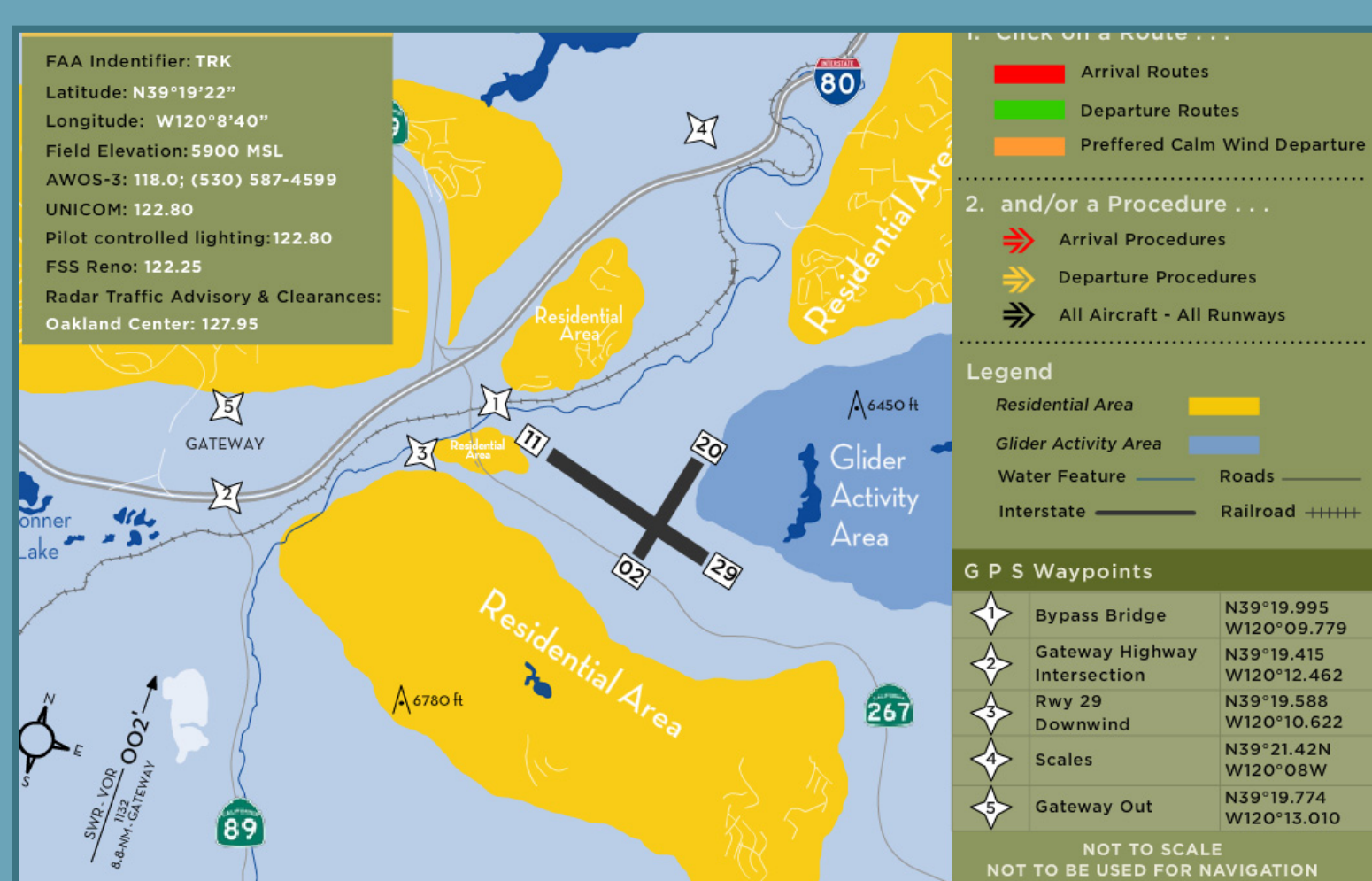
In lieu of an air traffic control tower, the airport provides a live webcam, UNICOM and 24-hour automated weather observing system (AWOS) to inform pilots of changing airport and meteorological conditions.



Enhance aviation safety by maintaining runways/taxiways, removing trees identified as obstructions by the FAA, and upgrading navigational aids.



Educate pilots on unique conditions (density altitude and wind shear) of mountain flying. The airport holds quarterly community/safety seminars.



Promote adherence to voluntary Fly Quiet procedures and curfew through pilot outreach and incentive programs.



Manage business and warehouse leases like the Red Truck, Sierra Aero, Hertz, Care Flight, Clear Capital, and others.

COMMUNITY BENEFITS



**TRUCKEE
TAHOE
AIRPORT**
Community Partner

Our Mission: Truckee Tahoe Airport is a community airport that provides high quality aviation facilities and services to meet local needs. We strive for low impact on our neighbors while enhancing the benefit to the community-at-large. The airport administers programs that foster an airport-community connection. Here are a few highlights:



Acquire properties in impacted areas around the airport for annoyance mitigation, safety, and community open space preservation.



Sponsor school programs like Aviation Day Camp and Discovery Academy.



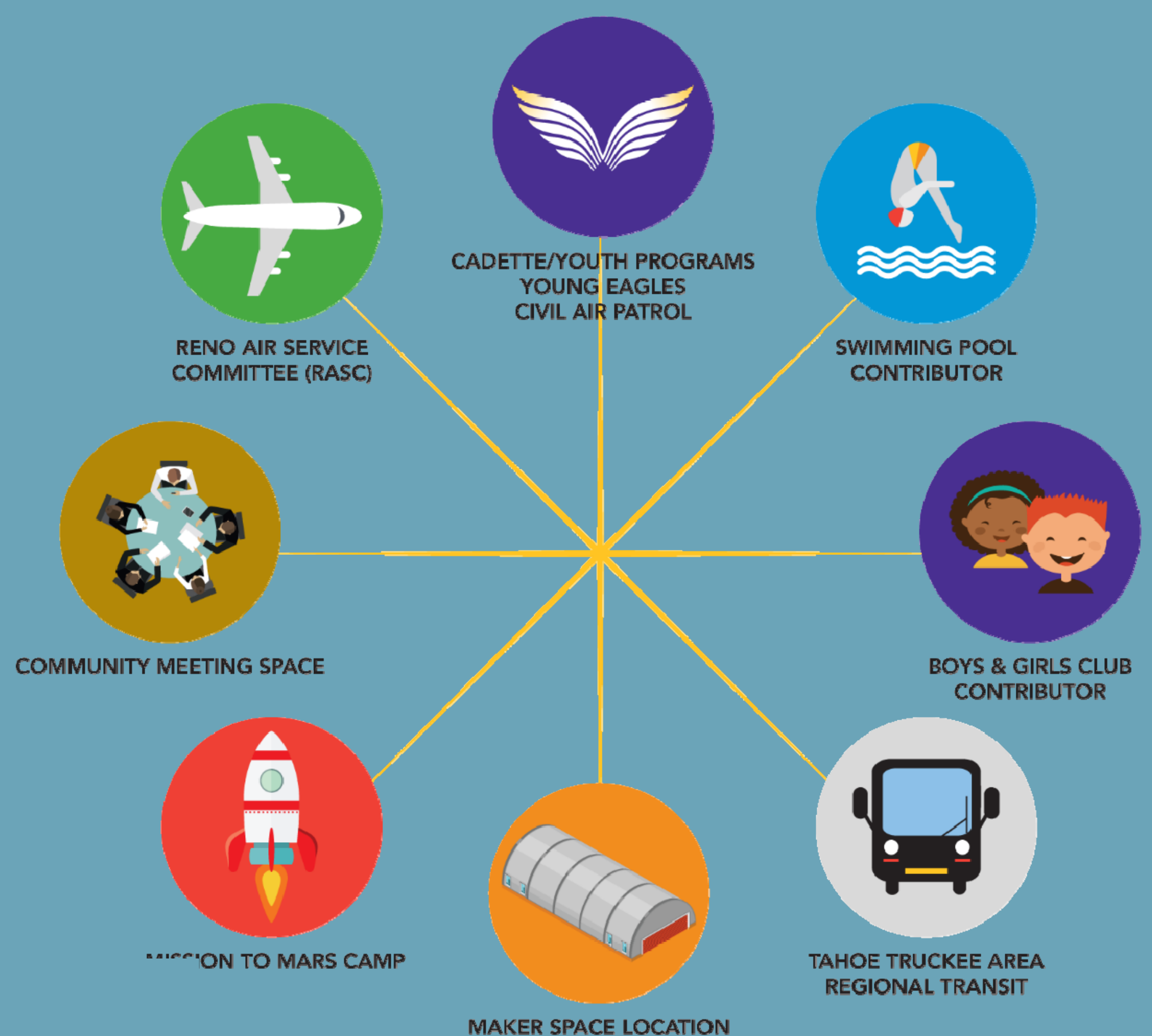
Build community facilities like the picnic area at the airport and future emergency services helipad in Tahoe City.



Offer airport facilities for use by non-profit groups like Girl Scouts, American Youth Soccer, Chamber of Commerce, and Toastmasters.



Enhance community outreach through technologies like live-streaming videos of Board meetings, flight tracking systems to monitor aircraft activity, and “dark skies” ramp and LED runway lighting.



Learn more at www.truckeetahoeairport.com

HOW ARE WE DOING?

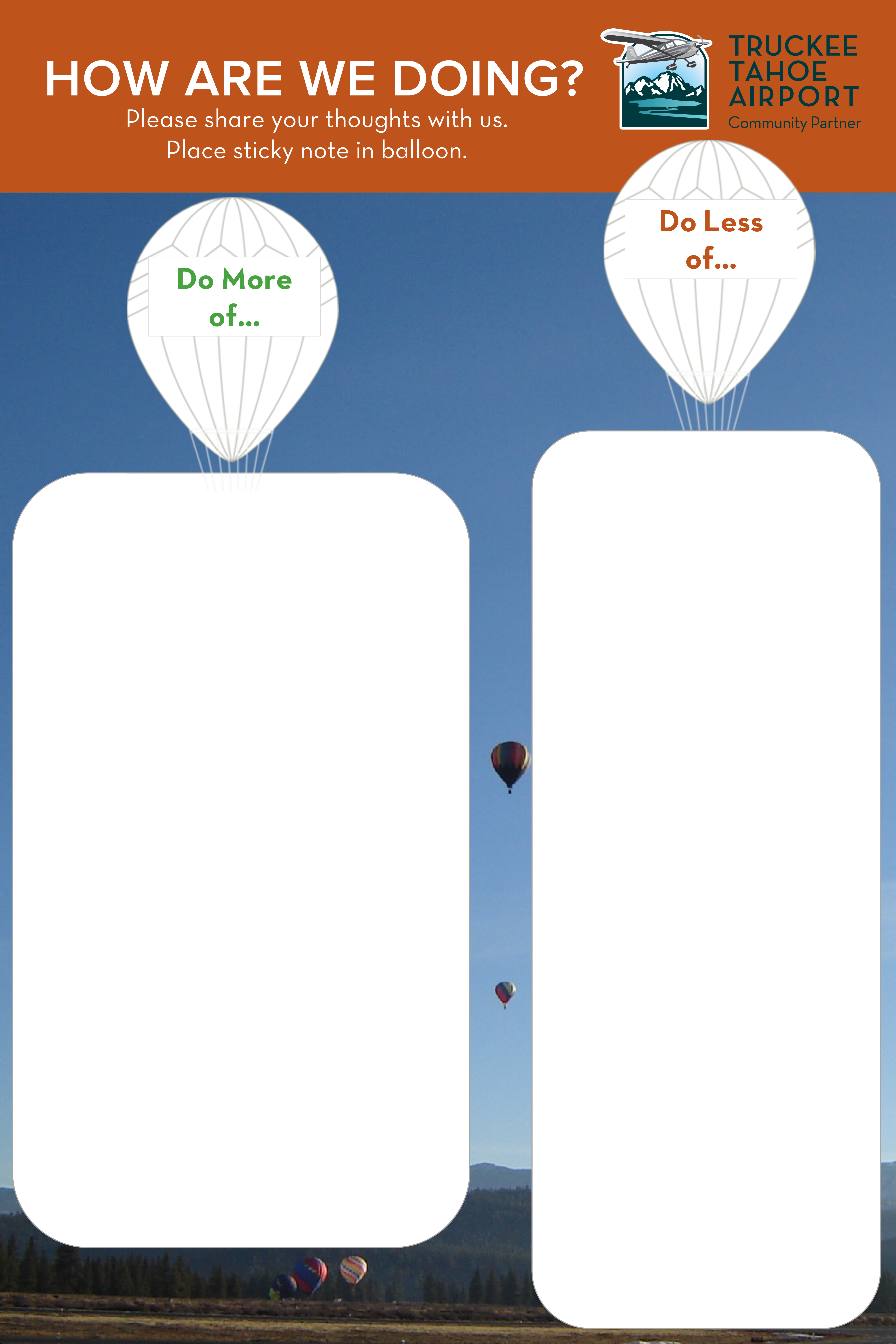
Please share your thoughts with us.
Place sticky note in balloon.



TRUCKEE
TAHOE
AIRPORT
Community Partner

**Do More
of...**

**Do Less
of...**



HOW DO YOU GET INFO ABOUT TRK?

Place dot in all balloons that apply.



**TRUCKEE
TAHOE
AIRPORT**
Community Partner

**Local
Paper**

**Airport
Website**

ENews

**TRK
Connected**

**Word of
Mouth**

CURRENT MITIGATION EFFORTS



**TRUCKEE
TAHOE
AIRPORT**
Community Partner

TTAD is sensitive to aircraft noise exposure on its neighbors and has crafted several programs to reduce annoyance.

Airport Community Advisory Team (ACAT)

- Established in 2005
- Comprised of three pilots and three non-pilot community members
- Recommend actions to the Board for reducing the impact of airport operations on its neighbors

Fly Quiet Program

- Website with program information, pilot guides and submittal form for aircraft annoyance complaints
- Incentives such as discounted hangar rents offered to local pilots for adhering to Fly Quiet procedures
- Voluntary noise abatement procedures and flight route
- Voluntary night curfew between 10 p.m. and 7 a.m.

Monitoring Program

- Quantity of annoyance reports filed
- Aircraft flight activity
- Adherence to voluntary Fly Quiet procedures
- Update TTAD Board of current trends

Transient Pilot Outreach Program

- Educate Bay Area pilots and pilot associations about on noise and safety procedures at TRK

Airspace Study (In Progress)

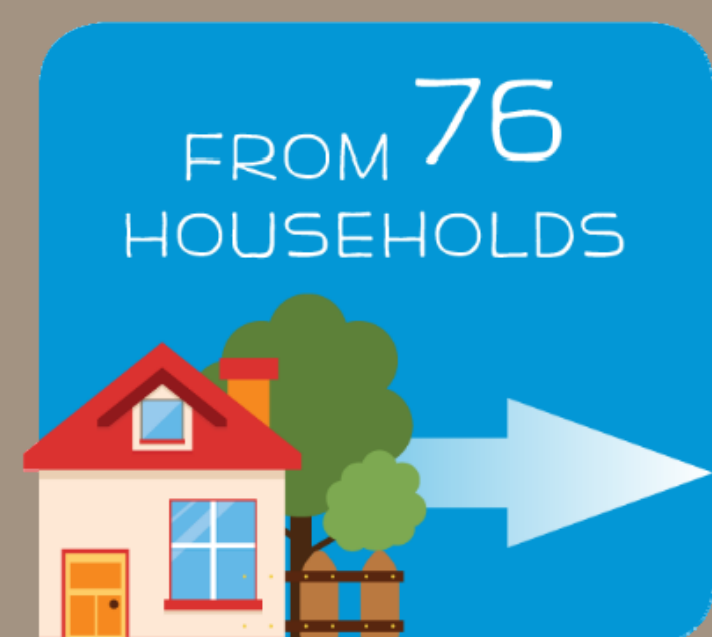
- Develop procedures for all runways to help reduce annoyance on noise impacted neighbors

Temporary Seasonal Tower Study (In Progress)

- Tower would help influence where aircraft fly

Airport Impacts on Local Neighborhoods

2015



ANNOYANCE RESPONSE PROCESS



VOLUNTARY CURFEW



OPERATIONS MIX

PISTON DRIVEN PROP 12,200	TURBO PROP 5,728	JET 3,411	HELICOPTER 1,097	GLIDERS 2,554	TOW PLANE 2,595
------------------------------	---------------------	--------------	---------------------	------------------	--------------------

Please share your thoughts with us.

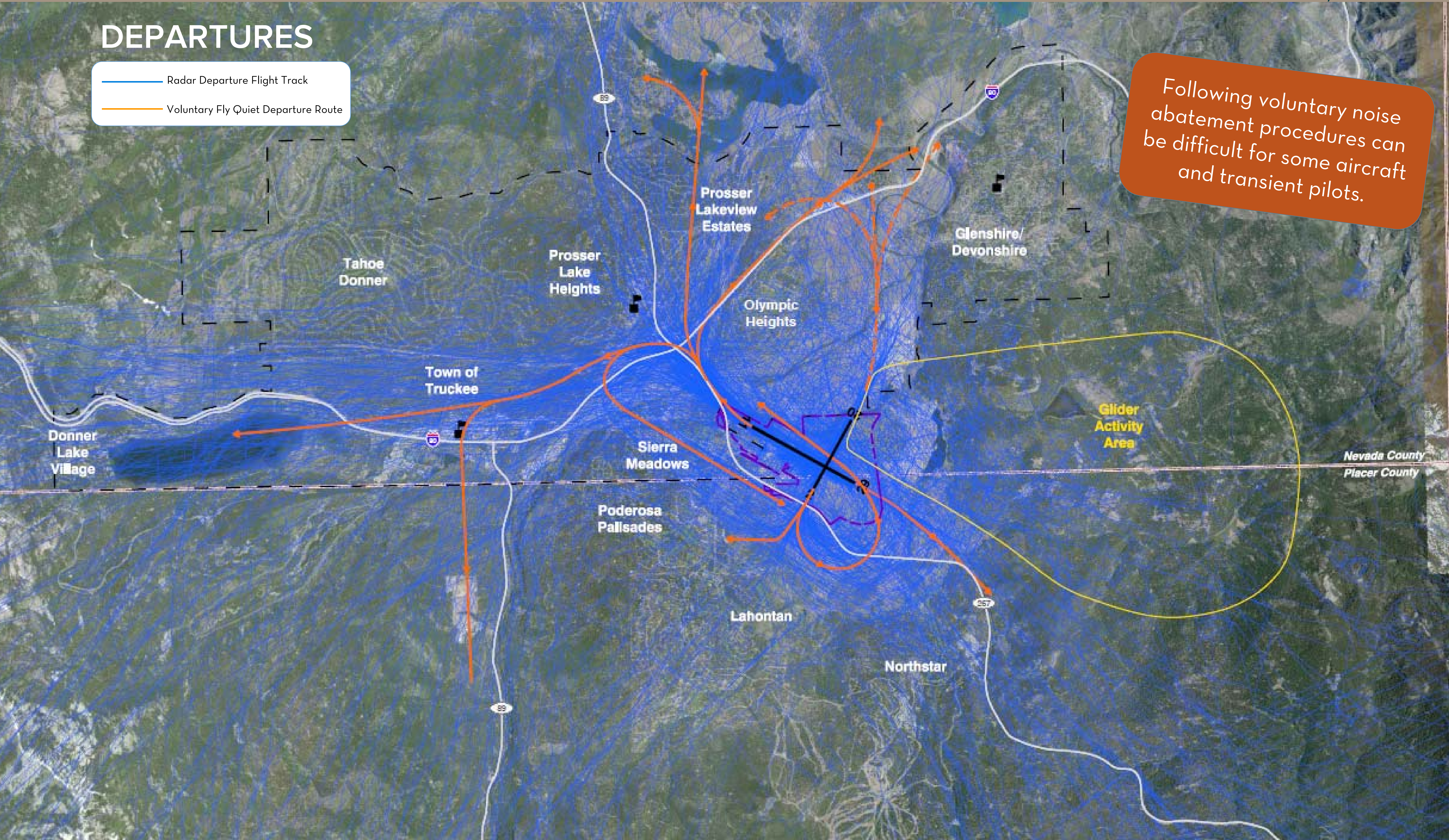
AIRCRAFT DEPARTURE ROUTES



**TRUCKEE
TAHOE
AIRPORT**
Community Partner

DEPARTURES

- Radar Departure Flight Track
- Voluntary Fly Quiet Departure Route



Following voluntary noise abatement procedures can be difficult for some aircraft and transient pilots.

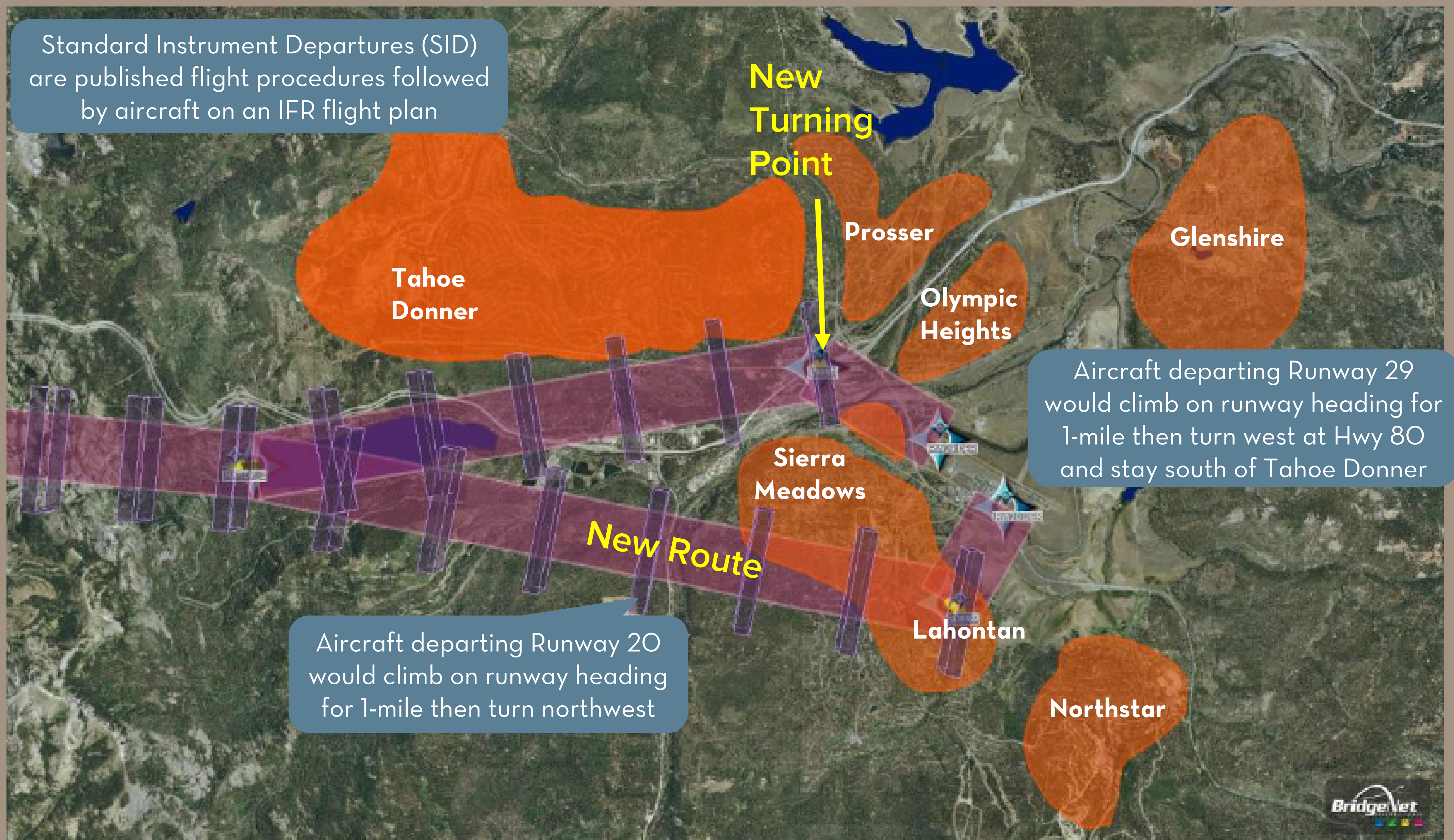
NOTIONAL FLIGHT ROUTES



**TRUCKEE
TAHOE
AIRPORT**
Community Partner

Purpose: Notional procedures developed for all runways to enhance runway utilization and reduce annoyance on impacted neighborhoods

Runway 20 & 29 Proposed Notional HARDY SID



Runway 2 & 11 Proposed Notional HARDY SID



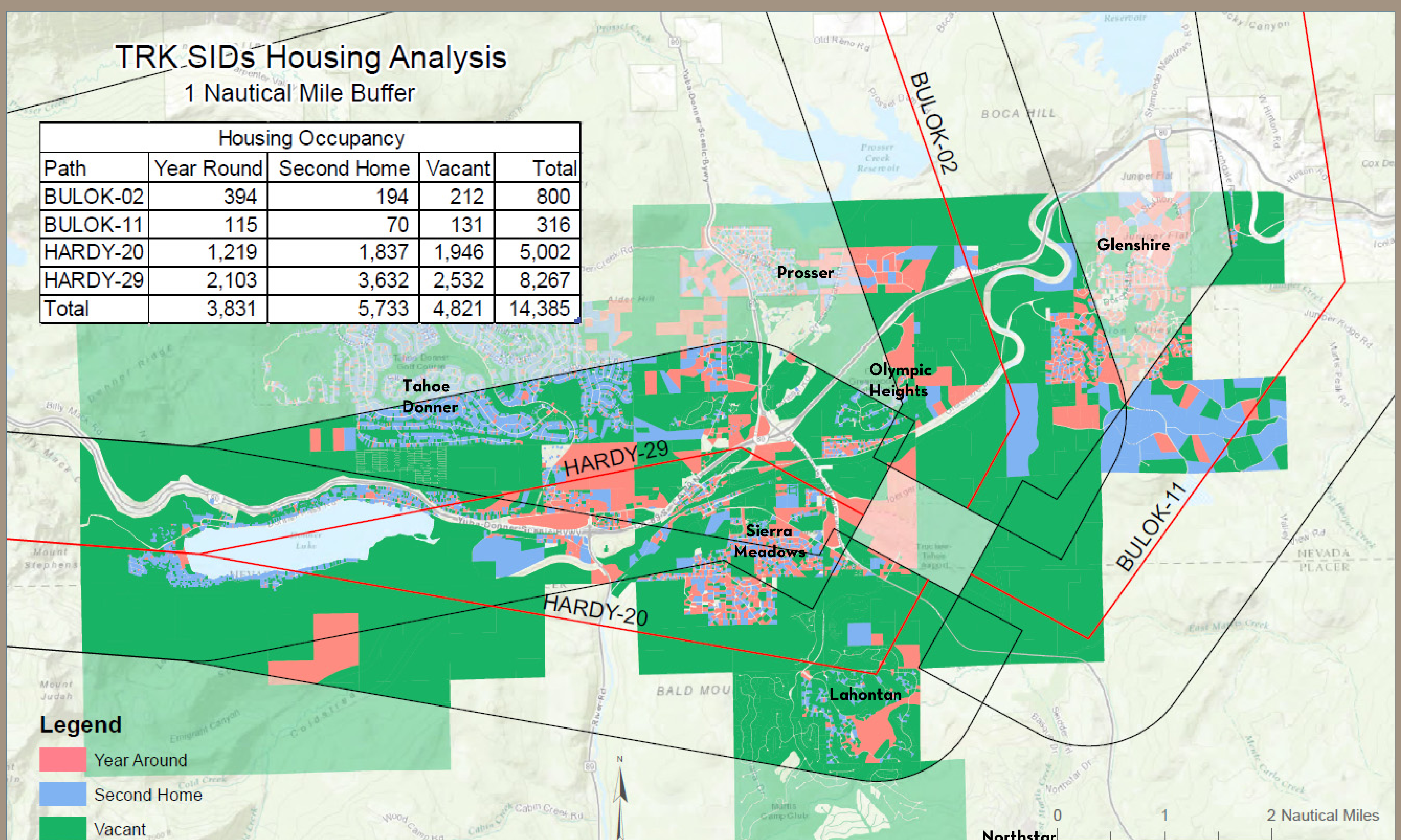
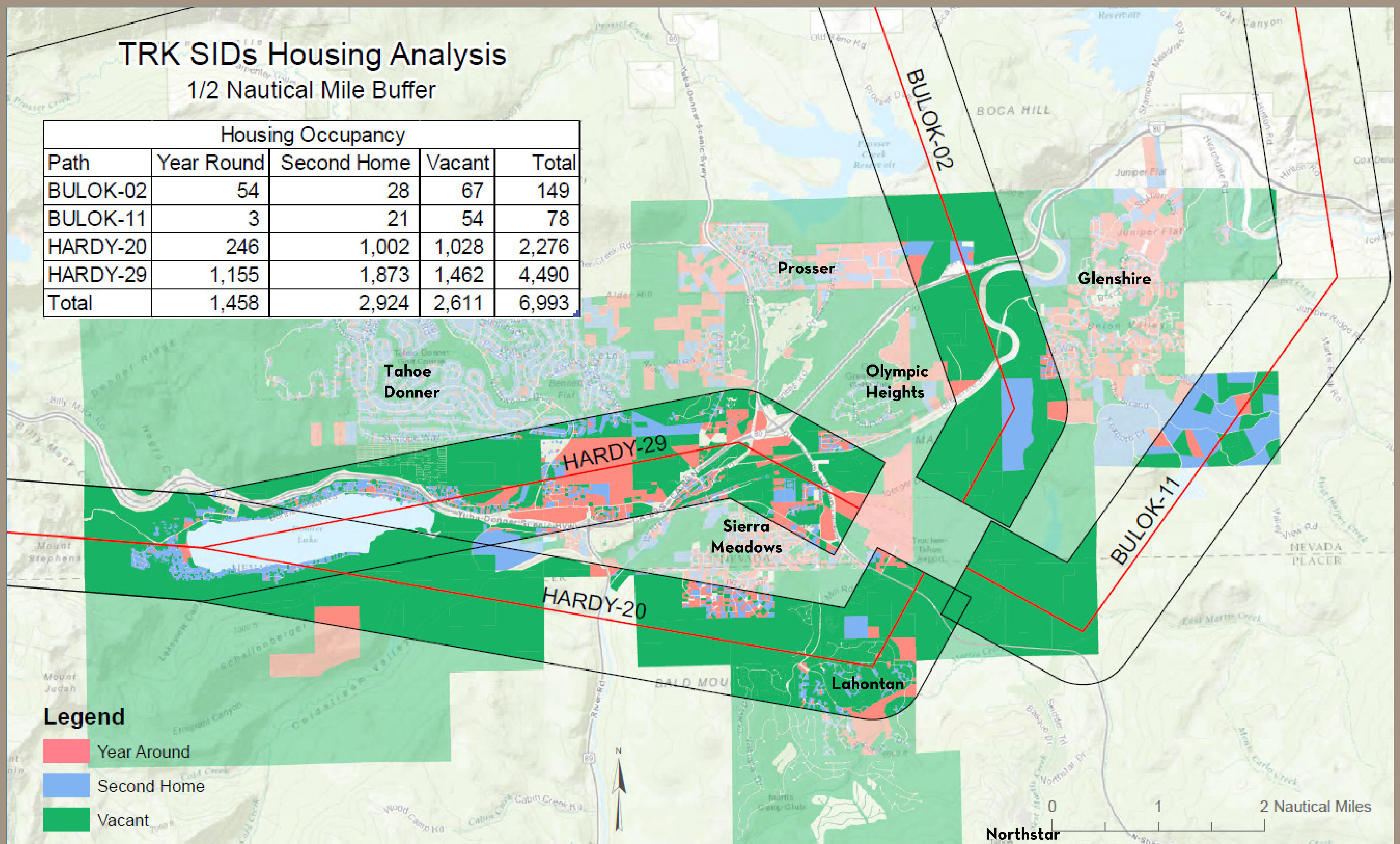
Please share your thoughts with us.

SID ROUTES HOUSING ANALYSIS



**TRUCKEE
TAHOE
AIRPORT**
Community Partner

Purpose: Determine the land uses and population affected by aircraft operating on proposed notional SID routes.



Please share your thoughts with us.

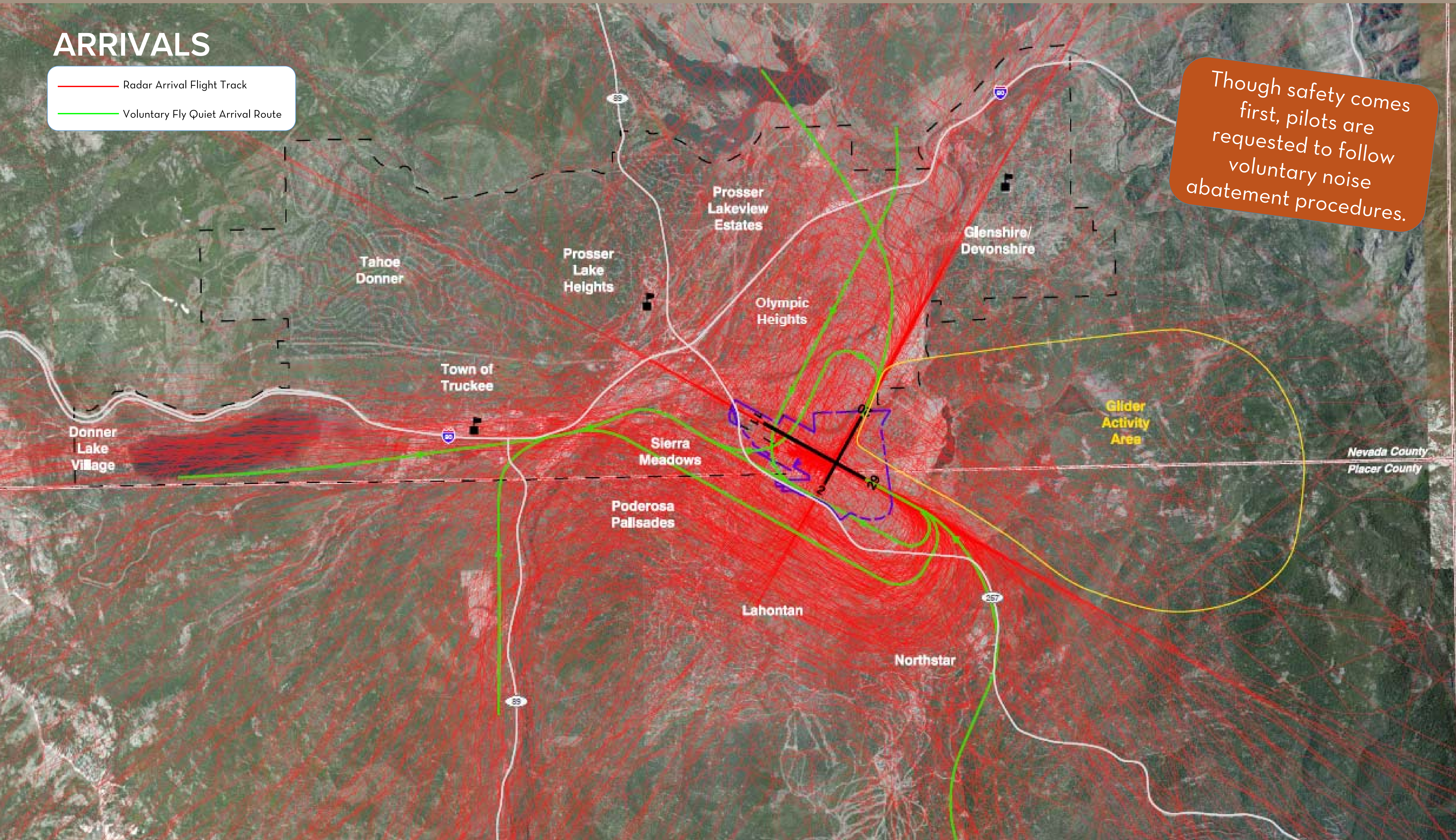
AIRCRAFT ARRIVAL PATHS



**TRUCKEE
TAHOE
AIRPORT**
Community Partner

ARRIVALS

- Radar Arrival Flight Track
- Voluntary Fly Quiet Arrival Route



Though safety comes first, pilots are requested to follow voluntary noise abatement procedures.

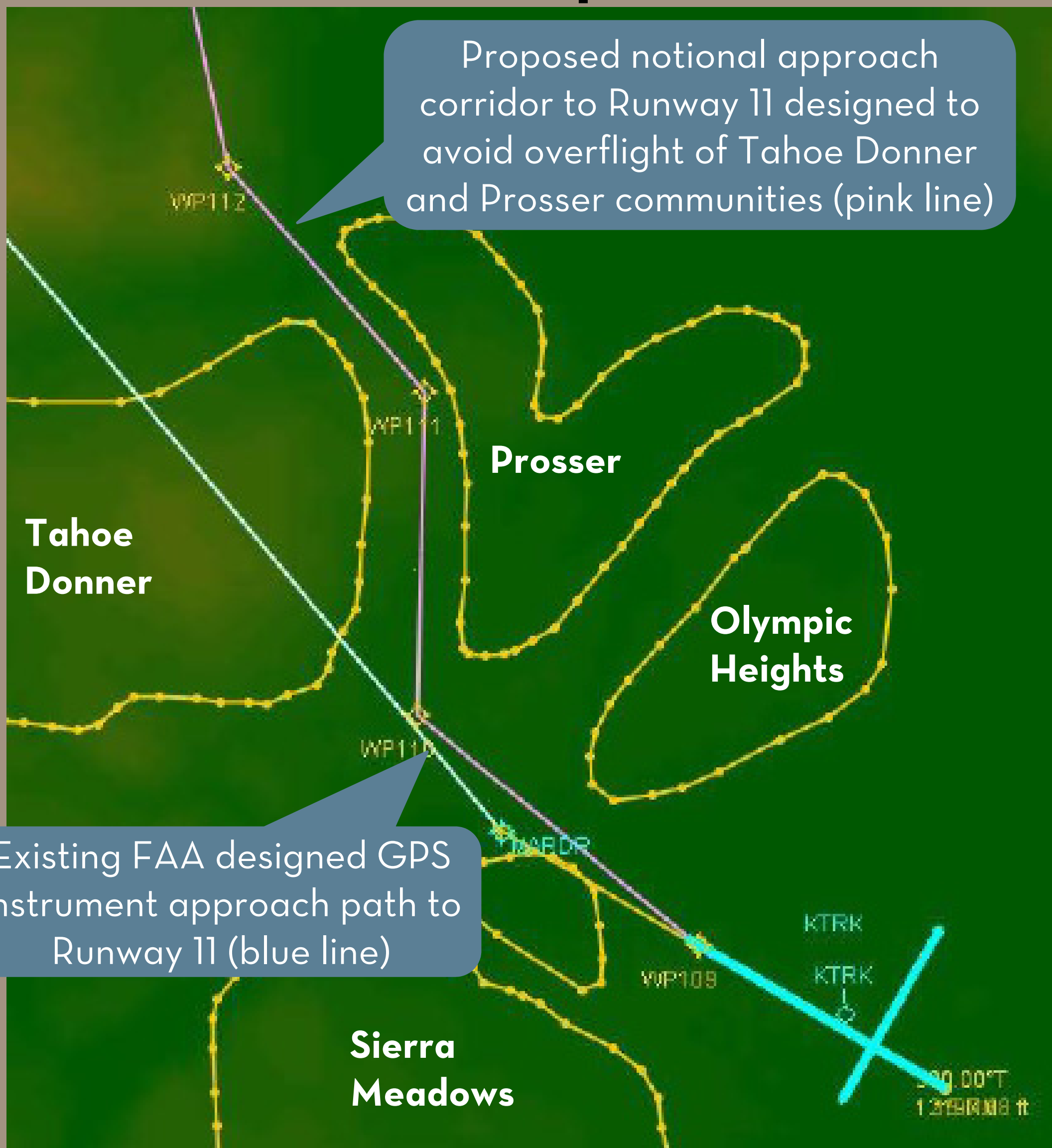
NOTIONAL APPROACH ROUTES



**TRUCKEE
TAHOE
AIRPORT**
Community Partner

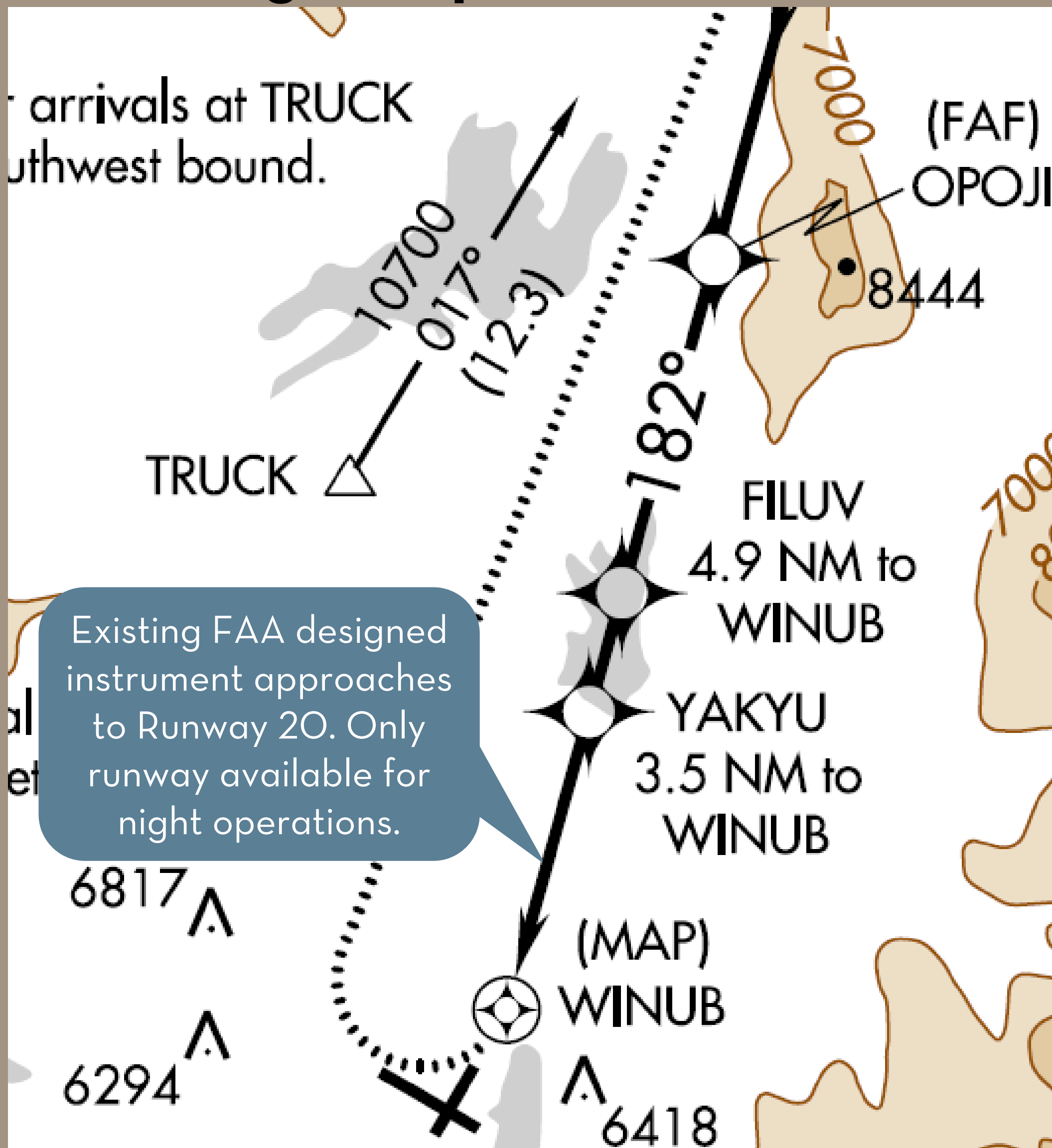
Runway 11

RNAV Visual Concept



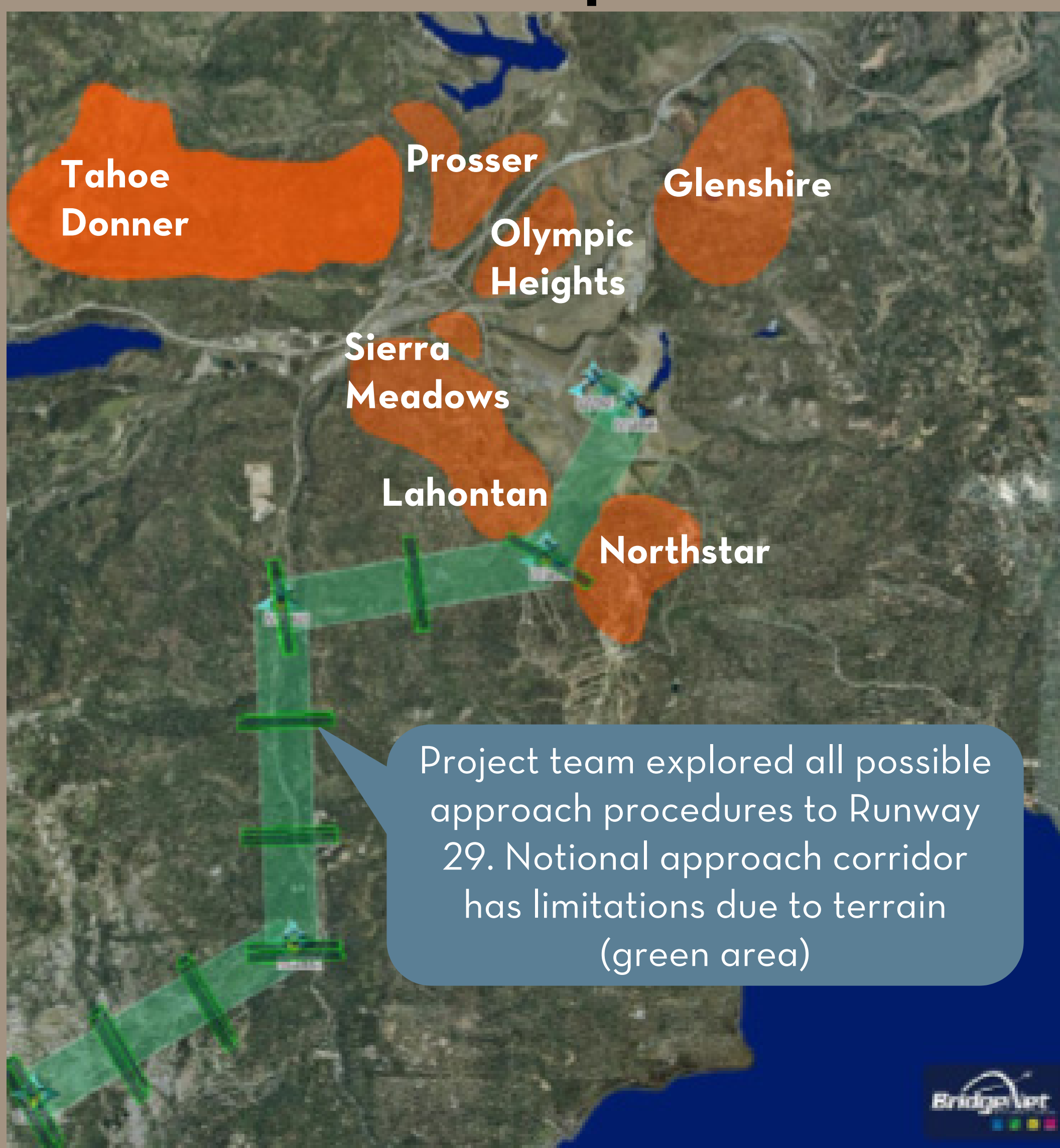
Runway 20

No Change Proposed



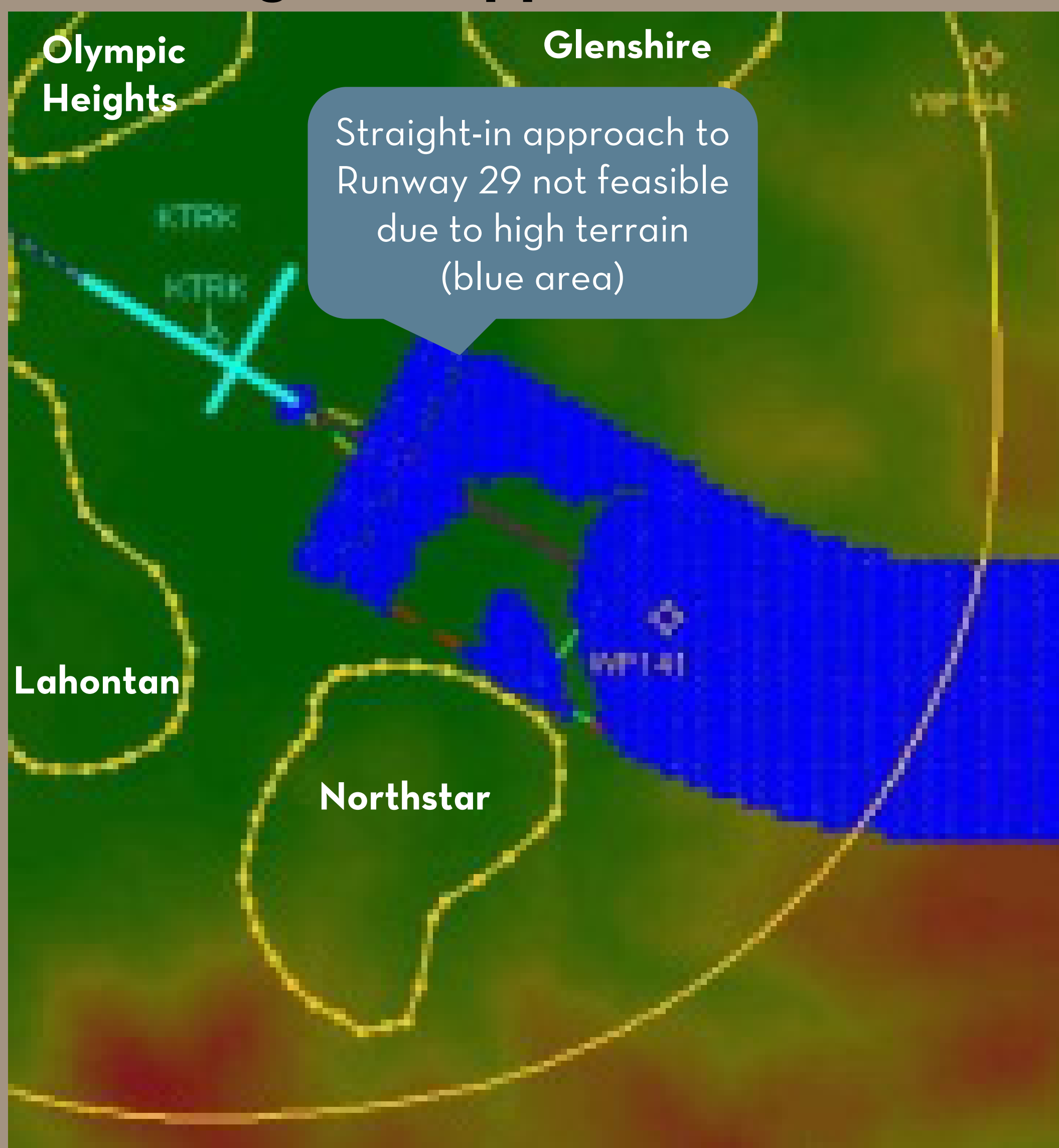
Runway 29

RNAV Visual Concept



Runway 29

No Straight-in Approach



Please share your thoughts with us.

TEMPORARY SEASONAL TOWER



TRUCKEE
TAHOE
AIRPORT
Community Partner

Purpose: Help influence where aircraft fly

- Without a Tower, all airspace procedures are voluntary
- Tower would recommend routes, assign runway use
- Tower would reduce duration of annoyance
- Tower would provide separation of aircraft and enhance safety



FAA regulates and manages airspace movement.

Just like an automobile driver, a pilot controls his/her airplane and where it goes once in the air.

Similar to any public road, an Airport is limited in its ability to prohibit aircraft access.

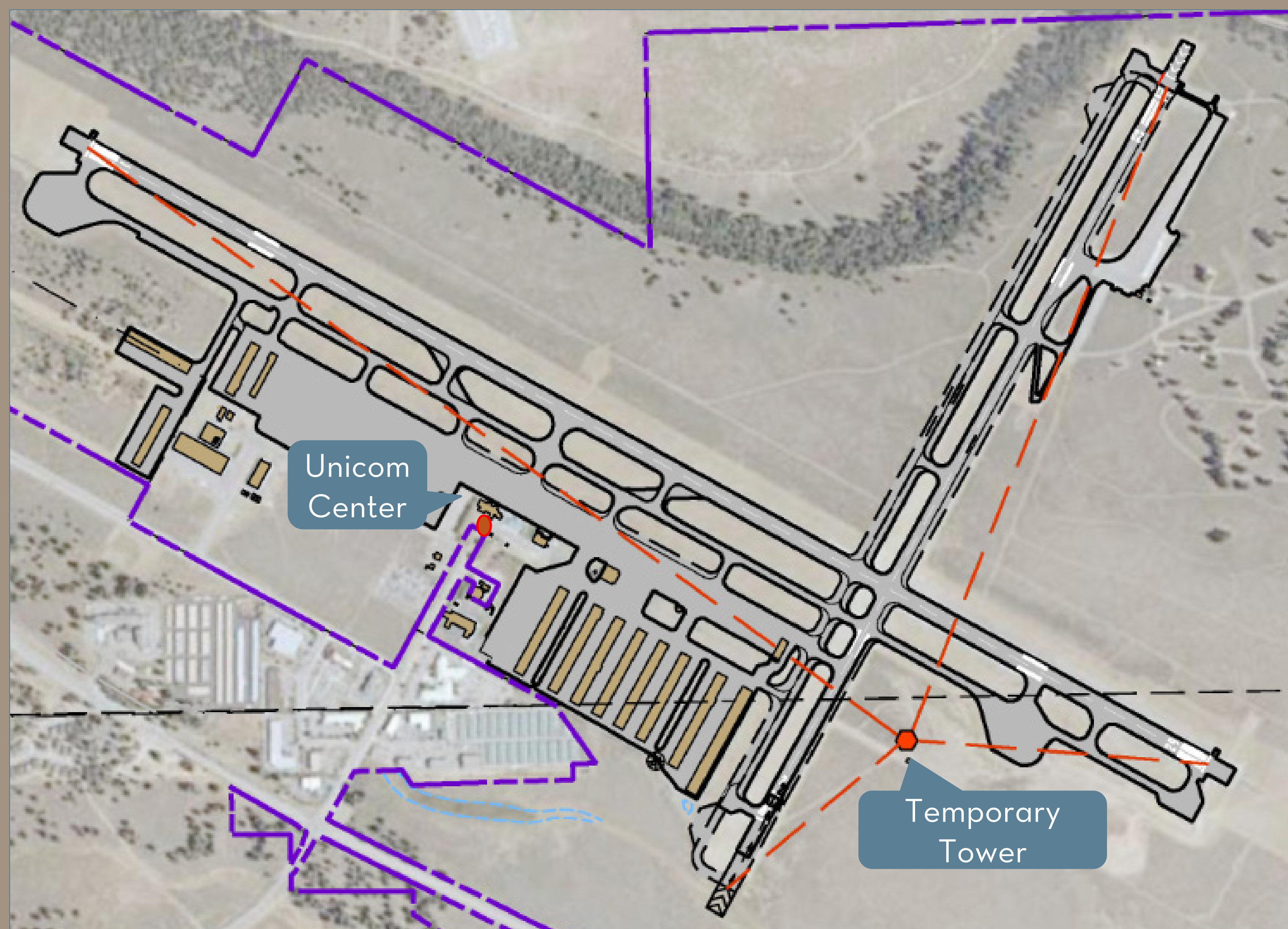
Caltrans issues the Airport Permit.

The Airport has no air traffic control tower. Airport staff monitor airfield activity from a viewing deck and provide advisories and assistance to pilots.



Proposal: Establish a seasonal Tower (May - October) on a trial basis to determine if a Tower would produce positive results.

- Step I: Use existing Unicom Operations Center in Terminal
- Step II: Establish a temporary Tower (mobile unit) with view of all runway ends



Please share your thoughts with us.

DO YOU SUPPORT CURRENT STUDIES?

Please share your thoughts with us.
Place sticky note in balloon.



TRUCKEE
TAHOE
AIRPORT
Community Partner

**Notional
Flight
Routes**

**Temporary
Seasonal
Tower**



Should we consider something else?