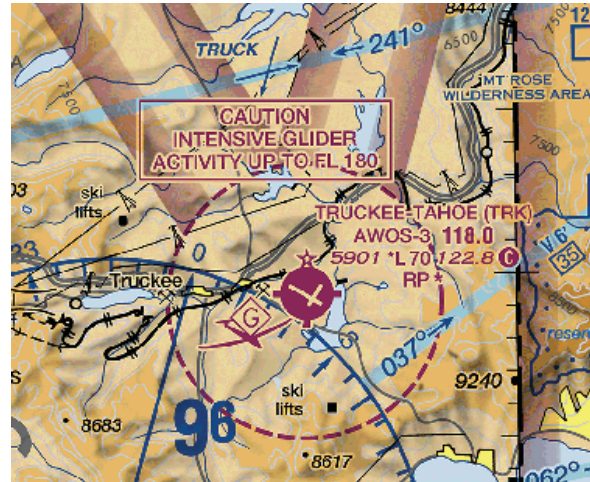


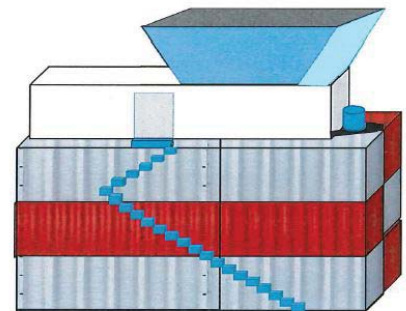


Tower Coming June 1, 2017

IMPORTANT INFORMATION FOR PILOTS



- Frequencies to know:
 - 118.0 Mhz - AWOS
 - 120.575 Mhz - TOWER/CTAF (After hours)
 - 118.3 Mhz - Ground Control
 - 122.8 Mhz - UNICOM/FBO
- The tower will operate seven days a week from 07:00 - 21:00 starting 6/01/17 through September
- Pick up clearances with KTRK Tower
- Tower will extend control: 2,500' AGL within a 4.2 mile radius of the airport
- Class E influence will extend to the surface
- Seamless transfer from Oakland Center to KTRK Tower
- Tower will not have radar capabilities; Pilot will lose radar services about 10NM outside KTRK and will get into KTRK Tower's visual sight at 4.2NM



Tower structure will be 36' high. Building will be in place year-round. Construction will take place in April and May 2017. If the program is continued, KTRK will have Class D designated airspace in summer 2018.